

# THE ELEVATED NEWS

Volume II

MAY, 1916

Number 8

SAFETY

SERVICE

COURTESY



SAFETY

SERVICE

COURTESY

## ANNOUNCEMENT

**T**HE ELEVATED NEWS, in its new form, hopes to become a medium through which the co-operation of the public with the company and its employes may be more fully developed and expressed. The Elevated Family now numbers half a million. Help extend the circle.

## See Chicago First

**C**HICAGO is a wonderful city. Its parks, boulevards and public playgrounds are famous throughout the world. Its public bathing beaches are unequaled in any city in the country. Thousands of visitors are attracted to the city each summer to view its wonderful museums, conservatories, flower gardens and its famous Zoo in Lincoln Park.

Yet there are thousands of Chicagoans who do not know their own city. They are content to live in one section. Many of the beauties of the city are lost to them. THE ELEVATED RAILROADS run through all the principal parks. Every section of the city can be reached quickly and safely over the Elevated Lines for a single fare of 5 cents.

THE ELEVATED RAILROADS offer exceptional facilities in the line of transportation. They are free from traffic obstructions. The cars are clean, roomy and well ventilated. Always fresh air and sunlight. Universal transfers between the Metropolitan Elevated, Oak Park Elevated, Northwestern Elevated and South Side Elevated. Through trains between the South Side and Northwestern Elevated. Rapid transit and one fare to all parts of the city over the lines of

**The Chicago Elevated Railroads**



# THE ELEVATED NEWS

SAFETY  
SERVICE  
COURTESY



SAFETY  
SERVICE  
COURTESY

---

Volume II

MAY, 1916



Number 8

---

## CO-OPERATION

**I**N the operation of a public utility the co-operation of the public with the company and its employes is essential if the highest degree of efficiency and the best service are to be attained.

In the nature of things, it is impossible for the officials entrusted with the management of the Elevated Railroads to come in personal contact with the hundreds of thousands who daily use the lines. The attitude of the company toward its patrons must in a large degree be reflected through the conduct of the employes and the character of the service given.

The management of the Elevated Railroad is frankly desirous of establishing and maintaining the most harmonious relations with its patrons. It realizes that a pleased public is a most valuable asset. It recognizes that there are human limitations beyond which the company cannot go in the matter of service, but it desires to give the best service possible within such limitations. It is constantly trying to improve the service and believes that its patrons appreciate that fact.

The Elevated News is issued to help the company, its employes and patrons to become better acquainted. We are all human and life's little irritations become less annoying when viewed with a little human understanding. Instead of indulging in useless criticism, let us all work together in a spirit of co-operation and in this way make for better service and a greater Chicago in which we are all interested.

---

## Courtesy and Encouragement

**H**AVE you ever noticed the effect of a little praise and encouragement? It is easy to give; it costs nothing and it makes the recipient happy.

Employes of the Elevated Railroads are expected to be courteous to patrons, and as a rule they are. They are human beings, however, and like all human beings it pleases them to know that their courtesy is appreciated. A word of praise occasionally will make them try all the more to please patrons. The average patron is more ready to criticise than to praise.

When you see a guard or conductor who takes exceptional pains to please, why not send his number with a favorable comment to The Elevated News? It will please the employe and encourage others. It will please the management to hear that its employes merit commendation. It will make for greater efficiency and better service. Try it.

---

### ELEVATED RAILROAD TICKETS.

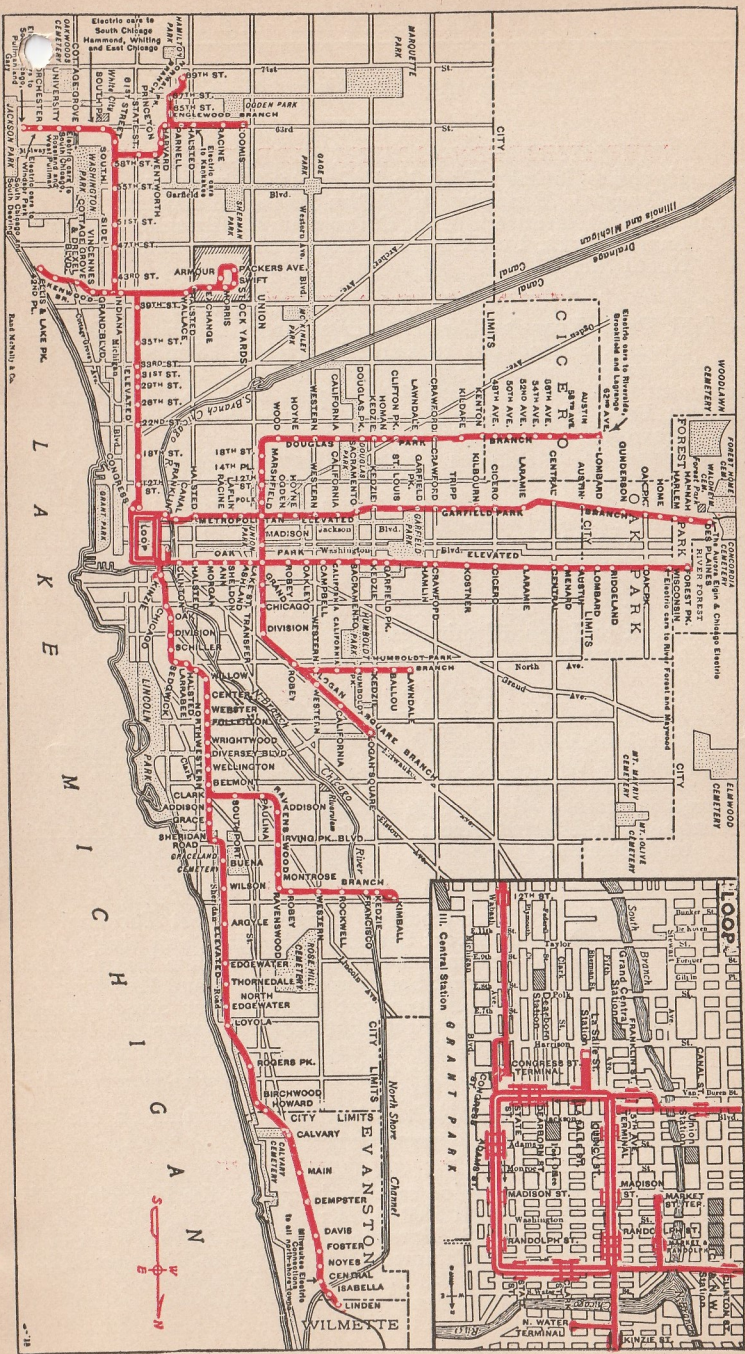
Tickets good at any Elevated Station may be purchased in quantities at the office of the Treasurer, 1228 Edison Building. Employers who furnish carfare to employes, will find it convenient to purchase tickets. Regular rate 5 cents each.

### SPECIAL TRAIN SERVICE.

Information regarding rates for Special Train Service may be obtained at the office of the General Superintendent, 1247 Edison Building, Phone Central 8280.

*Take the family for a Sunday outing in the country. The Elevated Railroads connect with all interurban lines.*







## Things You Ought to Know

### NORTHWESTERN—SOUTH SIDE ELEVATED.

Through trains Jackson Park to Wilmette, 71 minutes.

Loop to Evanston, 38 minutes; to Wilson avenue, 18 minutes.

Connections at Evanston with Chicago and Milwaukee Electric to Ravinia Park, Fort Sheridan, Highland Park and all points on North Shore.

### METROPOLITAN ELEVATED.

**Garfield Park Branch**—Through trains from Loop to Desplaines Avenue, 35 minutes; to Laramie Avenue, 23 minutes.

**Logan Square Branch**—Logan Square to Loop, 18 minutes.

**Humboldt Park Branch**—Lawndale Avenue to Loop, 23 minutes.

**Douglas Park Branch**—Sixty-second Avenue to Loop, 34 minutes; Crawford Avenue, 23 minutes.

Connections at Desplaines Avenue (Garfield Park Branch) with Aurora, Elgin and Chicago Electric to Lombard, Glen Ellyn, Wheaton, Aurora, Elgin, Batavia and all points in Fox River Valley. Finest scenery in Northern Illinois.

Connections at 62nd Avenue (Douglas Park Branch) with interurban for Riverside and La Grange.

### OAK PARK ELEVATED.

Forest Park to Loop, 33 minutes.

Hamlin Avenue to Loop, 16 minutes.

### SOUTH SIDE ELEVATED.

**Jackson Park Branch**—Jackson Park to Loop, 27 minutes; 58th Street, 18 minutes.

**Englewood Branch**—Loomis Street to Loop, 30 minutes; Normal Park, 28 minutes.

**Stockyards Branch**—Stockyards to Loop, 18 minutes.

Connections at Halsted Street (Englewood Branch) with interurban to Kankakee.

### EVENING RUSH HOURS.

**SOUTH SIDE**—Trains run out of Congress Street Terminal from 5:00 to 6:30 daily except Saturdays, Sundays and Holidays.

**METROPOLITAN**—Trains run out of Fifth Avenue Terminal from 5:00 to 6:30 daily except Saturdays, Sundays and Holidays.

**NORTHWESTERN**—Trains run out of N. Water Street Terminal from 5:15 to 6:20 daily except Saturdays, Sundays and Holidays.

**OAK PARK**—Trains leave Market and Madison Terminal every five minutes from 5:15 to 6:15 daily except Saturdays, Sundays and Holidays.

Take trains from stub terminals and relieve congestion on the Loop.

### WHERE TO FIND LOST PROPERTY.

Lost property found on trains can be claimed at the following offices from 8:30 A. M. until 5:00 P. M.:

**METROPOLITAN**—421 S. Marshfield Avenue—Phone West 879.

**SOUTH SIDE**—61st and Calumet Avenue—Phone Wentworth 853.

**OAK PARK**—3860 West Lake Street—Phone Kedzie 956.

**NORTHWESTERN**—4430 Broadway—Phone Ravenswood 3.

**UNION LOOP**—Randolph and Fifth Avenue Station—Phone Franklin 4244.



## HUMORIST OF THE METROPOLITAN.

In a recent issue of the Daily News there appeared the following story about Mr. Adams, a conductor on the Metropolitan:

"When a guard who has celebrated his twentieth anniversary as a protector of women and children on the elevated can still be understood as he calls stations he has established a record.

"In a voice that reminds one of the Southern orator or the old-time barrister who filled his voice

we are approaching the station of ———."

"As the train came near the Loop he was heard to say on one occasion, 'Gentlemen in the sleeper, please arouse themselves and draw on their boots. We near the city.' Every remark gets a laugh and he apparently never knows that he has said a funny thing. This 'L' guard is 71 years old and looks to be not more than 50. His number is 337. His home is 707 Lawndale avenue."

Mr. Adams fought in the 33rd Ohio Regiment in the Civil War and marched with Sherman from Atlanta to the sea.

## FORE.

It takes an expert to make a perfect "approach" to the hole. Any amateur can make a perfect "approach" to the golf links in Jackson Park, Garfield Park, Austin and Harlem by using the Elevated.

Time is money. Save time by using the Elevated Railroads.

Chicago's parks are beauty spots,

Its bathing beaches fine,  
To reach them by the shortest route,

Take an Elevated Line.

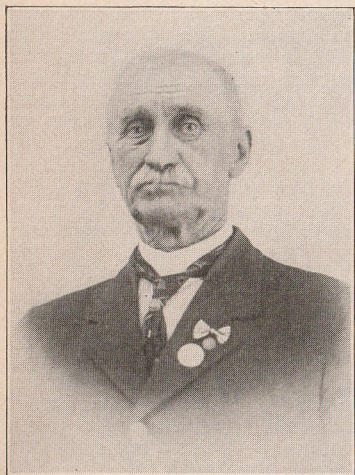
Get the fresh air habit. Ride on the Elevated. No dust. No delay.

The United States supplied Europe with \$800,000,000 worth of food in 1915. This was three times as much as in 1913, the year before the outbreak of the war.

Lives of great men all remind us,

We can make our lives sublime,  
We can ride upon the Elevated,  
And always be on time.

*Read the Elevated News.*



W. C. ADAMS

with mellow emotion, W. C. Adams is wont to make his announcements on the Garfield Park branch of the Metropolitan. At the Crawford station yesterday a woman was two cars away, but running to get aboard. Adams had rung the bell for the car to go ahead, but held the train, calling 'We always wait for the ladies.' Sometimes applause for his remarks is heard. When he calls into the smoker his mode is 'Gentlemen, I desire to announce that the next station will be ———' or 'Gentlemen, it may interest you to know that



## NEW STATION AT WILSON AVENUE.

Preliminary work has been started on the new station and improvements at Wilson avenue, which will, when completed, prove a great convenience for patrons of the Northwestern. The two existing stations will be consolidated, Wilson avenue trains, local and express, running into a stub terminal on the ground and the Evanston trains going through on the upper level. The new station will have about four times the capacity of the present one. It will front on Wilson avenue and have three tracks on the ground level. The improvement will cost about \$75,000.

## FACTS ABOUT LAKE ST. BRIDGE.

The new Lake Street bridge, recently opened for Oak Park Elevated traffic, is the only double-deck, trunnion bascule bridge in the world. It will cost when fully completed over \$600,000, of which the Oak Park Elevated pays one-third.

Weight of steel in bridge, 2,025 tons.

Weight of each movable leaf, 670 tons.

Weight of machinery, 490 tons. Counterweights, each leaf weigh 1,075 tons.

Length of steel work over all, 355 feet.

Width of steel work over all, 70 feet.

Width of span from pier to pier, 209 ft. 3 inches.

Weight of steel for reinforcing piers, 412,000 pounds.

It requires two motors of 100-H.P. each to operate each leaf. The sub-piers rest on rock at a depth of 110 feet. Work on the substructure began March 31, 1914.

## THE ROLL OF HONOR.

Several letters have been received recently commending employees for the civil and courteous treatment of patrons, sometimes under trying circumstances. Space in this issue forbids more than a mere mention of the acts commended. J. W. Mitchell, police officer at the Fifth Avenue terminal, is highly commended by a lady who dropped a roll of bills and a coin purse during the rush hours. She did not realize her loss until boarding a car. The bills, and later the coin purse were returned to her intact.

Motorman Sherman Rank of the South Side Elevated, No. 2403, is commended for his respectful manner toward an irate passenger who was quarrelsome. Mr. Rank was riding in the car as a passenger at the time.

Conductor John McCormick of the Northwestern Elevated, No. 574, is commended for being polite to ladies and for always keeping his car ventilated. Trainman M. Huber of the South Side, No. 915, is commended for alertness and close attention to business. Conductor John F. Walsh, No. 2490, on the Stockyards branch, is commended for many little acts performed to make his passengers comfortable and for gentlemanly conduct. Trainman P. J. Carr of the South Side, No. 2740, working on a through train, receives commendation for the courteous manner in which he gave directions to a lady passenger, evidently a stranger in the city.

Guard Raymond Auvil, No. 2472, is commended for keeping his temper and acting like a gentleman when he was being abused by a passenger, acting like a bar-room tough. His conduct under such trying circumstances won him the commendation of all the passengers who witnessed the incident.

Such acts of courtesy are appreciated by the company as well as by its patrons and it is gratifying to receive letters commending employees.

Fill your hours with gladness,  
Your lungs with good fresh air;  
Ride on the Elevated Railroads,  
You're sure of getting there.