

Rapid Transit News

RAPID TRANSIT SERVICE TO WESTCHESTER ABOUT MAY 1

NEW \$160,000 LOOP TERMINAL PLANS ANNOUNCED

(Picture on Page 5)

PLANS have been announced for a new terminal to be erected by the Chicago Rapid Transit Company on Wells Street, between Jackson Boulevard and Van Buren Street, Chicago, at an estimated cost of \$160,000.

The new structure will serve as a terminal for the Chicago, Aurora and Elgin Railroad, operating high-speed electrified trains to points in the Fox River Valley, as well as increasing Loop facilities for the Rapid Transit Lines.

Start Work in April

Construction work is expected to start about the middle of April. The new terminal will be a modern three-story structure, embodying all the latest improvements for the comfort and convenience of the traveling public.

An innovation in station construction will be the placing of the waiting room on the third floor—the track level. A mezzanine will provide a women's rest room and a men's smoking room.

Will Rush Construction

On the first floor will be located the ticket office and a passenger concourse.

The new terminal is scheduled for completion within six months from the time work starts.

Maywood-Bellwood To Get Fast Service; Tracks Are All Laid

(Pictures on Page 2)

RAPID TRANSIT Lines service will be inaugurated to Maywood, Bellwood and Westchester about May 1.

This all-important announcement, awaited with interest by the West Side communities, comes from the operating department of the Chicago Rapid Transit Company.

Construction Work Speeds

Excellent progress is being made in construction of the new line connecting with the Chicago, Aurora and Elgin Railroad at Bellwood and extending southerly to Roosevelt Road, Westchester.

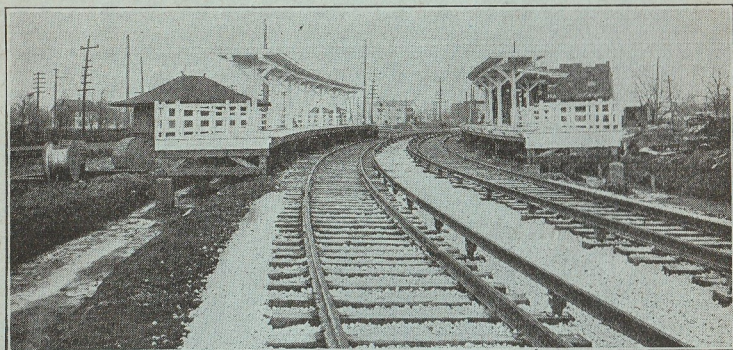
At present, the terminus of "L" service on the Garfield Park Line is at Des Plaines Avenue, Forest Park. As a result of an operating agreement, service will be extended westward over the Aurora and Elgin tracks to Bellwood and south to Westchester.

Track Is Completed

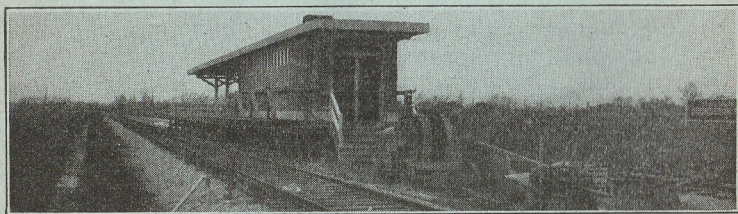
The roadbed has been completed and tracks laid, as well as the third rail installed.

Three stations and an interlocking tower at Bellwood Junction are under construction. The construction forces are confident the work can be finished by May 1.

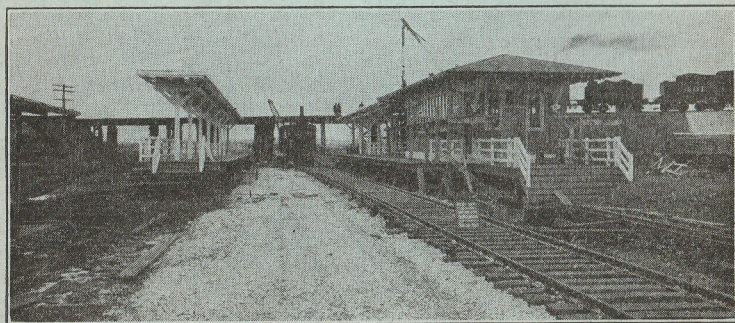
Fast Progress Made on Westchester Line



View of the Bellwood Station, looking northeast, showing the track and third rail in place and ready for inauguration of Rapid Transit service.



Harrison Street Station on the new Westchester Line. The surrounding fields show how the Rapid Transit Lines pioneer the way in opening outlying districts to homeseekers.



Roosevelt Road Station, Westchester, which will be the new terminus of Rapid Transit service westward when trains are placed in operation over this new line.



Courtesy Bouquets

The public policy of the Chicago Rapid Transit Company is reflected through its employees. The individual patron judges "L" service by the treatment he receives from the representatives with whom he comes in contact. Employees who are courteous and display a spirit of helpfulness towards the public whom they serve, are builders of good-will. Patrons of the "L" lines have always been generous in showing their appreciation. Here are a few of the commendations received since the last issue of this publication:

Lake Street Agent Miss A. Whitehouse is commended by Miss A. V. Powers for the aid and attention she gave Miss Powers when she fell upon the street and injured her head.

North Side Trainman Robert H. Kelly, badge 1686, is commended by Mrs. H. B. Hanson for his kindness and consideration toward a crippled man who boarded his train.

Metropolitan Trainman Samuel Orzoff, badge 6727, is commended by John Bowers, for his courtesy toward a blind man who boarded his train.

Lake Street Trainman Samuel T. Coughlin, badge 8776, is commended by George O'Brien for his courtesy in directing him to an address with which he was not familiar.

North Side Trainman Robert J. Dyslin, badge 1854, is commended by G. F. Zinck for his courtesy to passengers and for his interest in finding seats in a crowded car for lady passengers.

Metropolitan Trainman R. Mulvihill, badge 6749, is commended by R. L. Bloedorn for his courtesy to passengers.

Platform Man James Roach, badge 9502, is commended by Theodore H. Koerner for his courtesy and strict attention to duty.

North Side Trainman A. Bloom, badge 1347, is commended by Anthony Tufigero for the efficient manner in which he performs his duty and for his courtesy to all patrons.

Lake Street Trainman H. C. Dahl, badge 8592, is commended by Mrs. T. C. Underwood for his kindness and courtesy to a family group with several small children, who boarded his train.

Rapid Transit Radio Programs Now Being Broadcast; Tune In!

Here's news for you radio fans!

A selected program of music and short, interesting talks is being broadcast under the auspices of the Chicago Rapid Transit Company every Sunday afternoon, from 2:30 to 4 o'clock.

The artists are "taking the air" at Station WORD—wave length 275.3 meters, or 1,090 kilocycles—which is owned and controlled by the International Bible Students' Association, with headquarters in New York City. This is not a commercial station. The service is generously donated by the Association to the Rapid Transit Company, which furnishes the artists and arranges the programs.

Tune in! And then let the RAPID TRANSIT NEWS know by letter what you think of this latest bit of enterprise by the organization that furnishes "fast and reliable" high-speed transportation service.

RAPID TRANSIT NEWS

Issued Twice a Month by

Chicago Rapid Transit Company

(The Elevated Railroad)

LUKE GRANT, Editor

1325 Chicago Trust Building



Vol. X

February 15, 1926

No. 9

Take Your Choice

COMMUTERS in rapidly increasing numbers are appreciating the superiority of the Rapid Transit Lines over the automobile for fast and reliable transportation to and from the downtown business district.

Trains run with such frequency that one is at hand at most any time desired.

One of the biggest advantages of using the "L" today is the fact that you are not delayed by the increasingly heavy traffic congestion or worried by the parking problems!

But did you ever stop to think of the comparative expenses of riding by Rapid Transit and automobile? The following figures compiled by an automobile owner over a period of two years, are quite interesting:

| | |
|--------------------------------|---------------|
| Gasoline | \$ 160 |
| Garage | 144 |
| Lubricants | 32 |
| Tires | 50 |
| License and title..... | 21 |
| Insurance | 108 |
| Repairs and Miscellaneous..... | 100 |
| Total expense | \$ 615 |
| Interest on investment..... | 90 |
| Depreciation | 320 |

Total cost\$1,025

Miles covered, 14,000.

Miles per gallon of gasoline, 17.50.

Days used, 730.

Running expenses per day, \$0.84.

Total expense per day, \$1.40.

Total expense per month, \$42.65.

A weekly "L" pass costs \$1.25. It entitles the holder to as many rides on the Rapid Transit Lines as he can crowd into seven days.

Figure it out for yourself!

Between The Lines

First Motorist:—"Your speedometer shows you have gone 25,000 miles. Been taking some long tours?"

Second Motorist:—"No, the 5,000 is the distance I have covered going back and forth to the office, and the other 20,000 the distance I have covered looking for parking places."

* * *

THE DOUBLE JILT!

Daughter: "I hate George and I'm sending his ring back to him. What should I put on the box?"

Mother: "Glass, handle with care."

* * *

Chicago's most populous district is the square mile of territory bounded by Chicago, Ashland, North and Western Avenues, which has a population of 58,874, according to a survey made by Frederick Rex, municipal reference librarian. The district bounded by Roosevelt Road, Twenty-Second Street and Kedzie and Crawford Avenues ranks second with 56,553.

* * *

MODERN EDUCATION

Fond Mother: "Yes, Genevieve is studying French and algebra. Say 'Good morning' to the lady in algebra, Genevieve."

* * *

More than 3,500,000 miles of wire are required to furnish telephone service to the people of Illinois. And that is only a portion of the investment made by the thrifty in providing communication for all of the people, rich or poor!

* * *

HOW MANY COPIES?

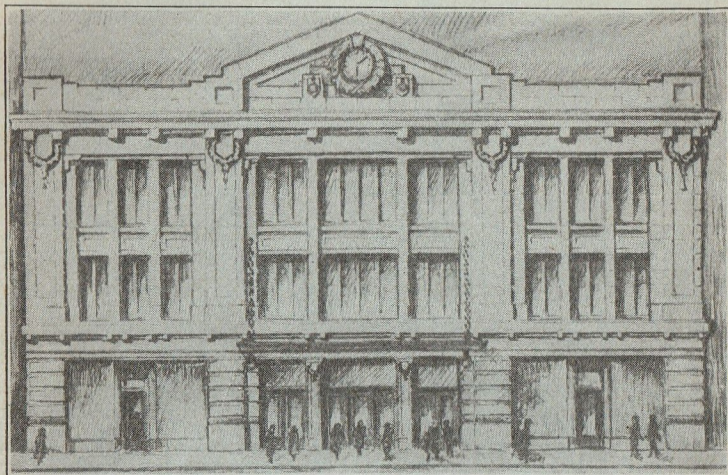
Pink: "Do Mandy resemble her mother?"

Black Joe: "Do she? Man, she am a perfect carbon copy."

* * *

There are 5,306 trains, composed of 18,320 cars, operated each 24 hours on the Rapid Transit Lines. This is a greater number of trains than enter and leave Chicago in all the steam railroad passenger service.

New Loop Terminal Is Announced



Architect's drawing of the new three-story terminal to be built on Wells Street, between Jackson Boulevard and Van Buren Street, Chicago, at an estimated cost of \$160,000. It will be used jointly by the Rapid Transit Lines and the Chicago, Aurora and Elgin Railroad.

"FIGHT, FIGHT!"

Jackson: "The idea of letting your wife go about telling the neighbors that she made a man of you! You don't hear my wife saying that."

Johnson: "No, but I heard her telling my wife she had done her best."

* * *

The average length of rides by passengers on the Rapid Transit Lines is $6\frac{3}{4}$ miles—many travel twice or three times that far.

* * *

A RESOURCEFUL YOUTH

"There is not a boy in this town as clever as my Charles!"

"Go on—how is that?"

"Well, look at those two chairs. My Charles made them all out of his own head, and he has enough wood left to make an armchair."

* * *

The average speed of Rapid Transit express trains is $18\frac{1}{2}$ miles per hour. On some of the fast runs the speed is at the rate of 24 miles per hour. Compare that with the speed of any other form of transportation.

"L" Improvements Save Passengers \$1,000 a Minute

Passengers on the Rapid Transit Lines are saving a total of \$1,000 a minute as a direct benefit from the recent extension of "L" station platforms and installation of six and eight-car express trains.

Records show that a total of five minutes is being saved in moving trains through the Loop during the rush hours, by these improvements.

Figuring the average income at 60 cents an hour, this represents a saving of five cents a passenger.

The Rapid Transit Lines furnish fast and reliable transportation to an average of 100,000 persons during each rush hour.

Hence the speeding up of "L" trains a total of five minutes represents a saving of \$5,000 worth of working time for the passengers—or \$1,000 a minute.

MORAL: Save time—and money—by riding on the Rapid Transit Lines!

Where to Go And

"THE MIRACLE"

AUDITORIUM THEATRE—World famous dramatic spectacle, over 600 in cast. Special attraction from Feb. 2 to March 20 inclusive. 58 E. Congress St., Congress Street Station.

THEATRES

(On Boards Feb. 22nd)

ADELPHI—"Old English"—11 N. Clark St., Clark Street Station.

APOLLO—"Gay Paree"—145 N. Dearborn St., Clark or N. State Street Station.

BLACKSTONE—"The Dove"—60 E. 7th St., Congress Street Station.

CENTRAL—"Some Girl"—64 E. Van Buren St., Congress Street Station.

CHATEAU—Ascher Stock Company—Broadway and Grace, Grace Street Station.

CORT—"Pigs"—132 N. Dearborn St., Clark Street Station.

GARRICK—"The Big Parade" (motion picture)—64 W. Randolph St., Clark Street Station.

GOODMAN—Varying attractions. See newspapers. Art Institute, Lake Front at Monroe St., Adams-Wabash Station.

GREAT NORTHERN—"The Student Prince"—21 W. Quincy St., Dearborn-State Street Station.

HARRIS—"They Knew What They Wanted"—170 N. Dearborn St., Clark or N. State Street Station.

ILLINOIS—"George White's Scandals"—65 E. Jackson Blvd., Adams or Congress Street Station.

LA SALLE—"Dancing Mothers"—110 W. Madison St., Madison-Wells Street Station.

OLYMPIC—"Castles in the Air"—165 N. Clark St., Clark Street Station.

PLAYHOUSE—"The Haunted House"—410 S. Michigan Blvd., Congress Street Station.

PRINCESS—"Young Blood"—319 S. Clark St., La Salle or Dearborn Street Station.

SELWYN—"The Vortex"—180 N. Dearborn St., Clark or N. State Street Station.

STUDEBAKER—"Blossom Time"—418 S. Michigan Blvd., Congress Street Station.

WOODS—"Ben Hur" (Motion Picture)—54 W. Randolph St., Clark or N. State Street Station.

ORCHESTRA HALL—Varied attractions (see newspapers)—220 S. Michigan Blvd., Adams-Wabash Station.

GREER—Chinese Opera Company in native offerings, 1515 South Wabash Ave., Roosevelt Road Station.

MOTION PICTURES

CHICAGO—175 N. State St., N. State Street Station.

HARDING—Milwaukee and Sawyer Aves., Logan Square Terminal Station.

HOWARD—1621 Howard St., Howard Street Station.

McVICKERS—Madison near State, Madison-Wabash Station.

ORPHEUM—112 S. State St., Madison-Wabash Station.

PANTHEON—4642 Sheridan Road, Wilson or Lawrence Avenue Station.

ROOSEVELT—110 N. State St., N. State Street Station.

STRATFORD—63rd and Halsted, Halsted Street Station, Englewood.

SENATE—Madison and Kedzie, Kedzie Avenue Station.

TIVOLI—6325 Cottage Grove Ave., Cottage Grove Avenue Station.

UPTOWN—Broadway at Lawrence, Lawrence Avenue Station.

WOODLAWN—63rd at Drexel, Cottage Grove Avenue Station.

VAUDEVILLE

DIVERSEY—2820 N. Clark St., Diversey Blvd. Station.

ENGLEWOOD—726 W. 63rd St., Halsted Street Station.

MAJESTIC—22 W. Monroe St., Madison-Wabash Street Station.

PALACE—127 N. Clark St., Clark Street Station.

RIVIERA—4746 N. Racine Ave., Wilson or Lawrence Avenue Station.

STATE-LAKE—State at Lake St., N. State Street Station.

DANCING

ARCADIA—4450 Broadway, Wilson Avenue Station, North Side.

CINDERELLA—5614 W. Madison St., Central Avenue Stations, Lake Street or Garfield Park Lines.

DREAMLAND—1701 W. Van Buren St., Ogden Avenue Station, Garfield Park Line.

GUYON'S PARADISE—124 N. Crawford Ave., Crawford Avenue Station, Lake Street Line.

MERRY GARDEN—3136 Sheffield Ave., Belmont Avenue Station, North Side.

MARIGOLD—817 Grace St., Grace Street Station, North Side.

TRIANON—Cottage Grove at 62nd St., Cottage Grove Station, South Side.

WHITE CITY BALLROOM—63rd St. and South Park Avenue, South Park Avenue Station, South Side.

How to Get There

ELECTRIC RAILROAD STATIONS

NORTH SHORE LINE—(Chicago North Shore and Milwaukee Railroad). 209 S. Wabash Ave. Board trains on "L" platform. Trains receive passengers also at Randolph-Wabash, Grand Ave., Wilson Ave., and Howard Street "L" Stations.

SOUTH SHORE LINE—(Chicago South Shore and South Bend Railroad). Trains leave Randolph-Michigan I. C. Station. Randolph-Wabash "L" Station.

CHICAGO, AURORA & ELGIN. Quincy and Wells Street. Quincy-Wells "L" Station.

STEAM RAILROAD STATIONS

ILLINOIS CENTRAL STATION—(Big Four, Illinois Central, Michigan Central, C. & O.). Roosevelt Road and Michigan Blvd., Roosevelt Road "L" Station.

UNION STATION—(Chicago & Alton; C. B. & Q.; C. M. St. P.; Pennsylvania), Canal, Adams, Jackson, Clinton-Canal Street "L" Station.

DEARBORN STATION—(A. T. & St. F.; C. & E. I.; C. & W. I.; Erie; Grand Trunk; Monon; Wabash), Polk and S. Dearborn St., Dearborn-State "L" Station.

GRAND CENTRAL STATION—(B. & O.; C. G. W.; Pere Marquette; Soo Line), S. Wells and W. Harrison St., Franklin Street or Quincy-Wells Station.

LA SALLE STREET STATION—(New York Central; Nickel Plate; Rock Island), S. La Salle and W. Van Buren St., La Salle Street "L" Station.

NORTHWESTERN STATION—(Chicago & Northwestern), W. Madison and Canal St., Clinton Street "L" Station, Lake Street Division.

HOTELS

(In or near "Loop")

AUDITORIUM—430 S. Michigan Blvd., Congress Street Station.

BLACKSTONE—636 S. Michigan Blvd., Congress Street Station.

CONGRESS—520 S. Michigan Blvd., Congress Street Station.

GREAT NORTHERN—237 S. Dearborn St., Dearborn Street Station.

LA SALLE—La Salle and Madison St., Madison-Wells Street Station.

MORRISON—Madison and Clark St., Madison-Wells Street Station.

PALMER HOUSE—15 E. Monroe St., Adams-Wabash or Adams-Madison Street Station.

SHERMAN—106 W. Randolph St., Clark Street Station.

PARKS

JACKSON PARK—South Side "L" to Jackson Park terminal.

WASHINGTON PARK—South Side "L" to 55th Street Station.

DOUGLAS PARK—Metropolitan "L" to Douglas Park Station.

GARFIELD PARK—Metropolitan or Lake Street "L" to Garfield Park Station.

HUMBOLDT PARK—Metropolitan "L" to Humboldt Park Station.

COLUMBUS PARK—Metropolitan "L" to Central Avenue Station.

LINCOLN PARK—North Side "L" to Sedgwick Street Station.

OGDEN PARK—South Side "L" to Loomis Street terminal.

GRANT PARK—"L" to any station on east side of "Loop."

EDUCATIONAL

FIELD MUSEUM—Grand Park, Roosevelt Road Station.

ART INSTITUTE—Michigan Blvd. at Adams St., Adams-Wabash Station.

COOK COUNTY NORMAL SCHOOL—Normal Parkway at Stewart Ave., Marquette Road Station.

UNIVERSITY OF CHICAGO—South Side "L" to University Avenue Station.

DE PAUL UNIVERSITY AND ACADEMY—1010 Webster Ave., Fullerton Avenue Station.

NORTHWESTERN UNIVERSITY—North Side "L" to Foster Street Station.

MAIN PUBLIC LIBRARY—Michigan Blvd. at Washington St., Randolph-Wabash or Madison-Wabash Stations.

ARMOUR INSTITUTE—3300 Federal St., 33rd Street Station.

LEWIS INSTITUTE—1949 W. Madison St., Lake Street "L" to Robey Street Station.

LOYOLA UNIVERSITY—Sheridan Road at Loyola Avenue, Loyola Avenue Station.

LA SALLE EXTENSION UNIVERSITY—Michigan Ave., at 41st St., Indiana Avenue Station, South Side.

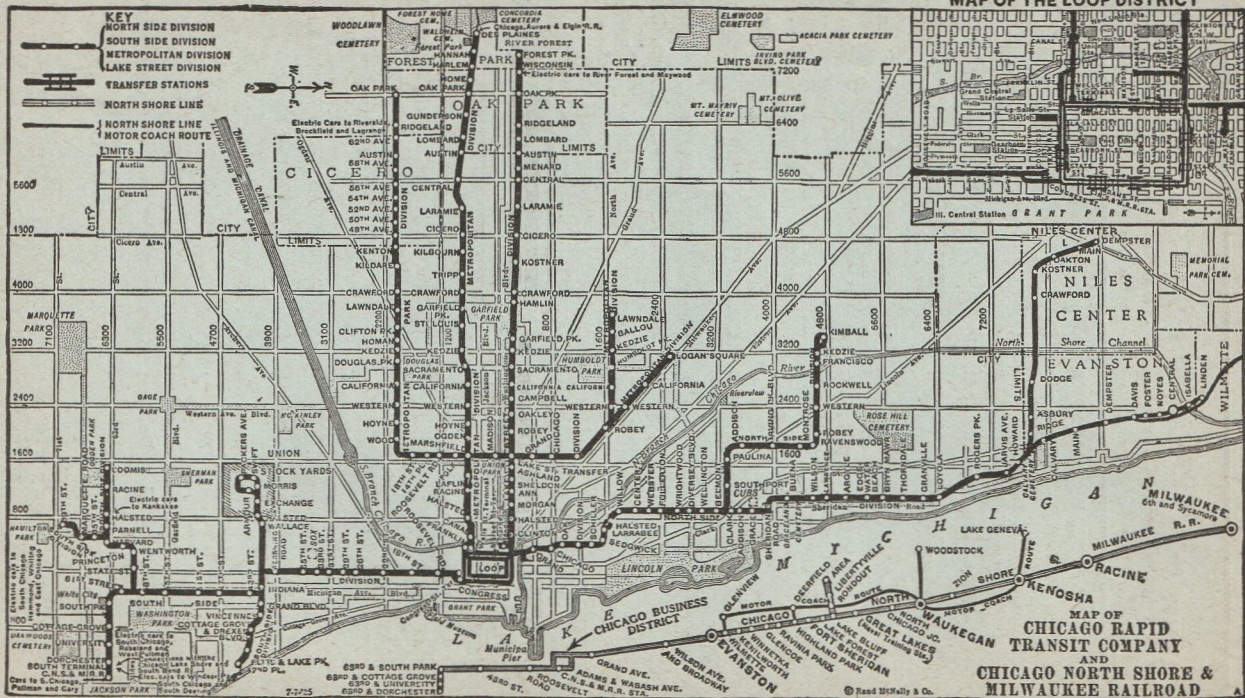
MISCELLANEOUS

COLISEUM—1513 S. Wabash Ave., 18th Street Station, South Side.

WHITE CITY RINK (Roller Skating)—63rd St. and South Park Ave. South Park Avenue Station, South Side.

STOCKYARDS—Take South Side "L" to Indiana Avenue Station and transfer to Stockyards trains.

HOW TO GET THERE—FAST



SERVICE TO ALL PARTS OF CHICAGO AND SUBURBS