

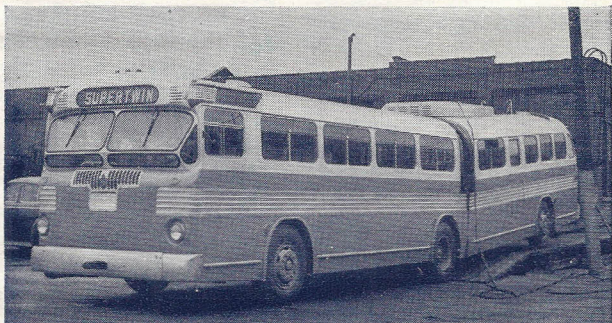


Rider's Reader

Vol. 2, No. 1

March, 1949

Largest Trolley Coach Being Tested



"QUEEN MARY," the largest electric trolley coach ever constructed, was recently delivered to Chicago Transit Authority and is now in test operation on various CTA routes to determine its passenger and operating characteristics.

Seating 58 people, the same number as the new PCC cars in service on several CTA surface routes, this trolley coach is 47 feet long and is hinged vertically at mid-section so that it will travel over cross-grade elevations with the same smoothness of

a much shorter coach of rigid body construction.

Both front and rear axles are equipped with steering gears synchronized so the coach can make an even shorter turn than a 44-passenger bus.

Aisle space of the new trolley coach is 31 inches as compared to the older type trolley coach aisle of 20 inches. The exit doorway is 47½ inches and has two double leaf doors that can be opened separately or together. Width of the entrance door is 32½ inches.

Lawrence Garage Wins Safety Plaque

HIGHLIGHTING a recent dinner of the Greater Chicago Safety Council was the presentation of a plaque to the Lawrence Bus Garage of Chicago Transit Authority for their safety record over a six month period.

The award was made for having the lowest frequency in number of traffic accidents per million miles. Lawrence garage competed in a group of 48 companies which operated trucks and buses over 1,000,000 miles on Chicago streets during a six month period.

Three other operating units of CTA were recently awarded bronze certificates for completing over 250,000 consecutive man-hours without a lost time accident. Sponsor of this inter-employee safety campaign is the American Transit Association.

TRANSIT MAP STILL AVAILABLE

COPIES OF the popular system-wide pocket map of Chicago Transit Authority showing all CTA lines and connecting suburban routes can still be obtained through the Public Information department, Chicago Transit Authority, Room 1226, 79 West Monroe street.

A valuable guide for your travels throughout the city and suburbs, this handy map includes a condensed directory of Chicago streets, information about CTA, loca-

CTA FAMILY PORTRAIT



TYPICAL of the many family groups in Chicago Transit Authority employment is *Thomas Hoey* and his three sons, left to right, *William, Patrick* and *Thomas P.*, who, combined, have been working a total of 65 years in mass transit.

The elder Hoey is shop foreman at the North Avenue Car Repair Station and a veteran of 38 years with the Surface system. His three boys, all married, are employed in the Surface system West Shops, Thomas as an armature winder, Pat as a car repairman, and Bill as an apprentice armature winder.

"As far as we are concerned," said the father of this CTA family, "good jobs that provide a good living are CTA standards of employment. That's why we work for Chicago Transit Authority."

tion of major points of interest in the city and hints to passengers on faster and more comfortable rides through the use of CTA unified service.

Make it a point today to call, write or stop in at the Public Information department for your copy of the first system-wide map issued by Chicago Transit Authority.

Trolley Buses on Belmont Avenue

THE RECENT CONVERSION of Belmont avenue to trolley bus operation was the first step in Chicago Transit Authority's proposed modernization program for 1949. Simultaneously, the route was extended westward to Cumberland avenue from its former terminal at Pacific avenue. Approximately 45.5 percent of CTA's weekday

Fare Collections Being Modernized

MODERNIZATION OF fare collection methods has been achieved on various Chicago Transit Authority bus routes by the installation of electrically operated coin registering devices in buses on these lines. These are the first of an order of 1,000 fare boxes scheduled for delivery during the 1949 modernization program planned by CTA.

The new type fare boxes, made from the latest designs, collect and electrically register dimes, nickels and pennies. Purchase of these fare boxes was made only after an extensive study of fare collection methods had been completed by CTA engineers.

Installation of these coin registering machines makes possible faster and more efficient collection of fares. Public cooperation in this effort to improve service is solicited by a poster, displayed on the front of each bus equipped with a new fare box, which urges riders to have the exact fare ready.

surface rides now originate on new equipment.

Now in service for the 63,000 weekday riders of this route is a fleet of 55 new, 44-passenger electric buses. A transfer at Central avenue between the Belmont street-cars and trolley buses has been eliminated and through service is now provided over a 9½-mile route.

Hints for Spring Shopping

THE BRIGHTLY colored spring styles now showing in stores throughout the business districts of Chicago mean that these locations are going to be crowded during the coming weeks.

If you are going to your local shopping center or to the Loop for the latest fashions of '49, why not travel in the most modern and comfortable style—on new streamlined Chicago Transit Authority vehicles that will help to make your shopping day pleasant and relaxing.

That big day of picking a stylish dress, hat, suit or coat will be even more enjoyable if you (1) shop between 10:00 a.m. and 4:00 p.m. and after the evening rush hours; (2) have your fare ready; (3) move to the opposite end of the vehicle after boarding; (4) leave by the main exit doors. By following these few hints you will increase your comfort and speed the trip for everyone.

For a happy season of spring shopping, start and finish on CTA vehicles.

Lady (after tramp finished eating): "It's merely a suggestion. The wood-pile is in the backyard."

Tramp: "You don't say. What a splendid place for a woodpile."



"Can you wait until I make a withdrawal?"

HEADLINE EVENTS

served by
CTA LINES

Art—Exhibition of sculptures and graphic arts of Artists League of Midwest—Mandel Bros. Art Exhibition Galleries, State and Madison streets. March 21 - April 16.

Lighting—Third International Lighting Exposition—Stevens Hotel, 720 South Michigan. March 29 - April 1.

Basketball—Chicago Stags—Home Games—Chicago Stadium, 1800 W. Madison street.

Movies—Free children's program. Chicago Natural History Museum, Roosevelt and Lake Shore Drive, each Saturday, through April 30, at 10:30 a.m.

Paintings—Water color paintings of California flowers—Chicago Natural History Museum. Until April 2.

Flowers—Easter and Spring Flower Show—Garfield and Lincoln Park Conservatories. April 10 to April 24.

