

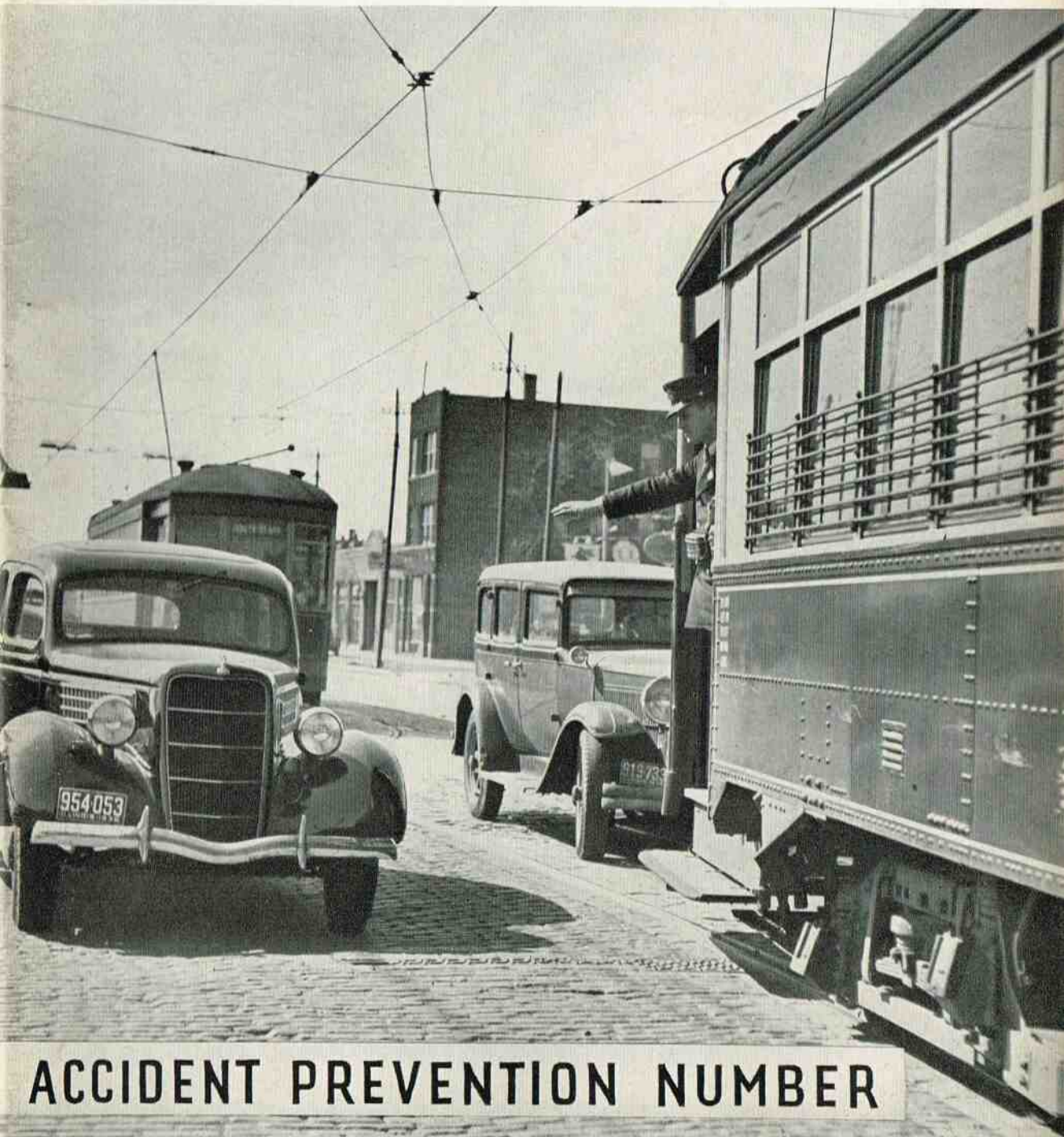
Surface Service

• **MAGAZINE** •

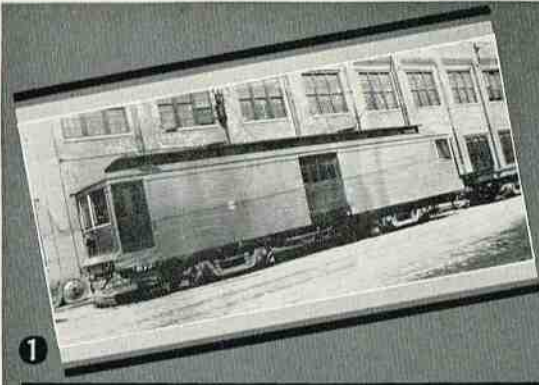
VOLUME 13

APRIL 1936

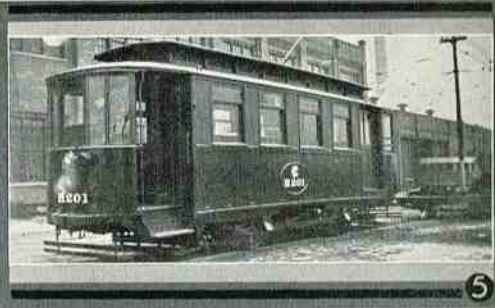
NUMBER 1



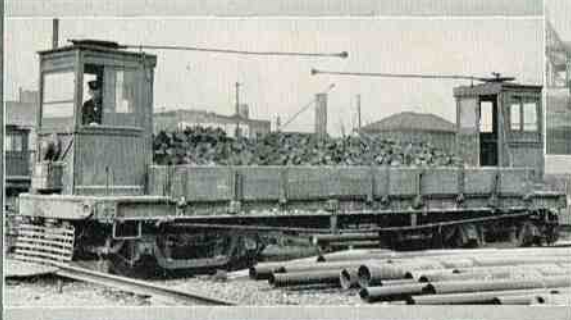
ACCIDENT PREVENTION NUMBER



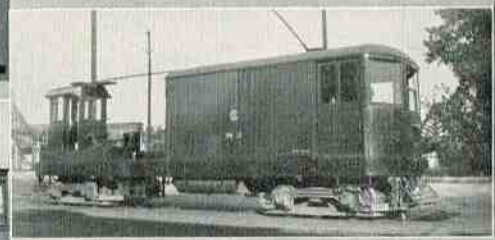
1



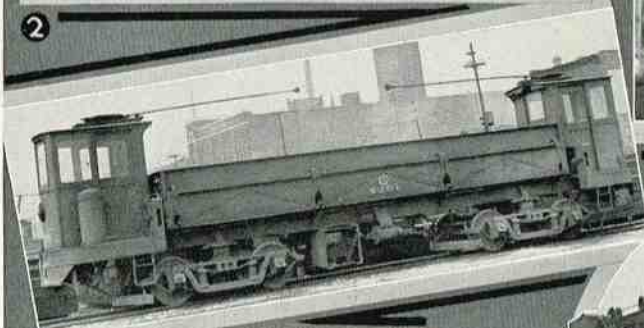
5



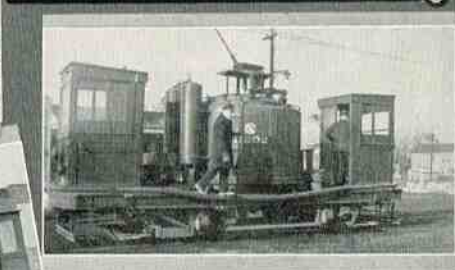
2



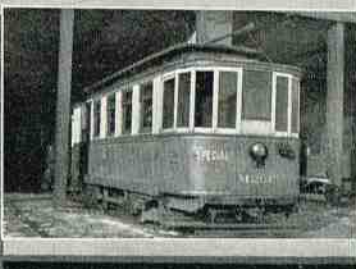
6



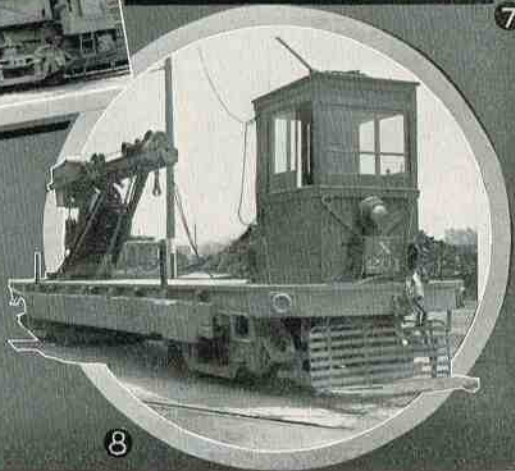
3



7



4



8

SURFACE LINES UTILITY SERVICE CAR EQUIPMENT

Cars that help to keep service moving but which are seldom seen by the public. 1—Supply car, South Shops. 2—Work car for track material. 3—Coal and ash car. 4—Building Department supply car. 5—Wreck car, Mechanical Department. 6—Supply car, West Shops. 7—Sand car, pneumatic unloader. 8—Derrick car for general use.

Surface Service Magazine

A Monthly Publication by and for Chicago Surface Lines Employees

VOL. 13

APRIL, 1936

No. 1

Big No-Accident List

Total of 5,511 Go Through Year Without Chargeable Accident

By WILLIAM PASCHE

Supervisor of Accident Prevention

A total of 5,511 Chicago Surface Lines conductors and motormen ended the year 1935 without a single chargeable accident, and of this number 935 have had no chargeable accidents for the 9 consecutive years during which records have been kept in this way.

Of the total number of no-accident trainmen, 3,997 have had no chargeable accident for 2 years, 3,152 for 3 years, 2,622 for 4 years, 2,271 for 5 years, 2,047 for 6 years, 1,703 for 7 years, and 1,306 for 8 years.

When it is considered that these men are operating day in and day out in streets congested with automotive traffic, the safety record of such a large proportion of the trainmen is remarkable. It proves the statement frequently made, that the street car is the safest place in the streets.

While the train force is most conspicuous in all accident prevention efforts because it is constantly in the public eye, other departments of the Surface Lines have made a good showing.

The carhouse group of the Shops and Equipment Department won the Chicago Safety Council's Interplant Lost-time Accident Contest for the 6-months' period ended June 30, 1935, duplicating a similar achievement by the west shops group for the 6-months' period ended December 31, 1934. The Chicago Safety Council also awarded a plaque to the bus division of the Transportation Department for the best accident reduction record in the inter-fleet contest for the year ended June 30, 1935.

Track Department Record

The Track and Roadway Department ended the past year without any fatalities of men working in the streets and with a record of no lost eyes, although 7 goggles were smashed, indicating that if the goggles had not been worn eyes would have been lost. This was the first year since the Accident Prevention Department was organized in 1926 with a clear record on deaths of men working in the streets.

The most outstanding accident prevention achievement of the Transportation Department during the year was a reduction of 32 per cent in the number of fatalities as compared with the previous year. As a matter of fact, the number of fatalities was the lowest in the history of the Chicago Surface Lines.

Great improvement was made in several other classifications of accidents. There was a

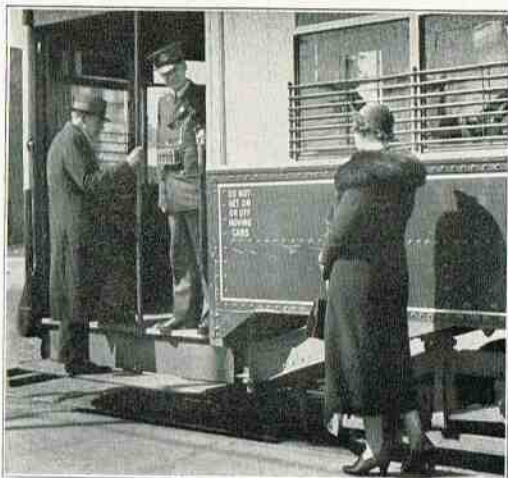
decrease of 35 per cent in the reports of passengers brushed off the car, of 11 per cent in the number of vehicle collisions, and of 10 per cent in car and person injuries and in collisions of cars.

Boarding and Alighting

In some other classifications, however, the record is not so good. There was an increase, for instance, of approximately 21 per cent in the number of boarding accidents and of 7 per cent in the number of alighting accidents.

An analysis of the causes of boarding accidents shows an increase of 27 per cent in the number of persons injured in stepping from the street into the car, and of practically the same percentage of increase in the number injured in stepping from the platform into the car. The number injured by automobiles while they were approaching the car increased 10 per cent, but the number injured by automobiles while boarding decreased 66 per cent.

Similar percentages are shown in breaking down the figures on alighting accidents. Passengers injured on the platform increased 22 per cent and in stepping to the street 20 per cent. On the other hand, there was a decrease of 18 per cent in the number injured after alighting from the car and before reaching the curb, of 65 per cent in the number of those struck by auto while alighting, and of 19 per



Looking out before starting.

cent in the number of those hit by automobiles after alighting and before reaching the curb.

Fall in Car Record

It is under the classification of fall-in-car accidents that the worst record was made. The total number of these accidents last year as compared with the previous year showed an increase of 30 per cent. There was an increase of 19 per cent in those injured by falls on the front platform, of 35 per cent in the number of those injured on the rear platform, of 85 per cent in the number of reported injuries from falling in the front part of the car, and 41 per cent in those falling in the rear of the car. Those reported injured from falling as the car was started up showed an increase of 48 per cent and the number reported falling when the car was stopping was 32 per cent greater than in the previous year.

This indicates the need of much greater care on the part of motormen to attain smooth operation. There is some justification for the statement that more claims of injury were made last year than previously because of the activities of fake accident claim rings, but the large increase in fall-in-car accidents cannot all be attributed to this cause.

Perhaps it is due largely to the claim consciousness on the part of the public that the number of blind cases increased about 11 per cent, notwithstanding an increase of 52 per cent in the total number of accident reports.

Fewer Collisions

The decrease in the number of accidents due to collisions deserves special mention because it was accomplished in spite of the fact that there were 30,880 more licensed vehicles on the streets last year than during the previous year. In fact, the number of passenger automobiles licensed in 1935 was the greatest since 1931. Without doubt the general interest in greater traffic safety shown by city authorities and many organizations contributed to the reduction in the number of collisions, but the greatest factor was the increased alertness and care on the part of Chicago Surface Lines trainmen.

GARDENERS ALL SET

Ready for 1936 Garden Contest

Looking forward to what promises to be a favorable season, the gardeners on the various Surface Lines properties throughout the city are getting ready to start planting for the annual Garden Contest. The Garden Committee, composed of Messrs. F. M. Hamilton, chairman, J. V. Sullivan, and H. O. Crews, has decided to make no change in the grouping of the garden plots for the contest. The rules governing these groupings will hold good for another year.

With the incentive given by the activities of the "Save the Lawn" Committee of the Park District, more attention is expected to be given to the growing of beautiful lawns this year. At several of the car stations plans are being made for more elaborate floral displays, without increasing the space utilized for this purpose.

The groupings of the garden plots for the car stations will be as follows:

Group One—Carhouses whose enclosed area

permits of extensive planting of beds, borders and grass plots. These include Burnside, Devon and Noble.

Group Two—Carhouses, the enclosed area of which permits only a limited planting of beds, borders and grass plots. These include 77th Street, Kedzie, Lawndale, North Avenue and Armitage.

Group Three—Carhouses whose possibilities are restricted to window boxes and beautifying parking strips. These include Limits, 69th Street, Blue Island, Division, Elston, Lincoln, Archer and Cottage Grove.

Group Four—Loop and station plantings. Madison and Austin loop, Milwaukee and Im-lay loop, 39th and Halsted loop and Archer and Cicero loop.

Group Five—Particular excellence in growing any certain variety of flower. In making this award consideration will be given to height of plant, number and size of blooms, condition of foliage, etc.

HERE AND THERE

An American writer for *Time* magazine, in describing the appearance of the American team at the Olympic games in Germany, stated that they "looked like a bunch of street car conductors." Whether he based his comparison on their smart-looking uniforms or their general athletic appearance is not known. Possibly he had Chicago conductors in mind.

A short Hebrew passenger boarded a Clark-Wentworth car and holding a small satchel level with his mouth while paying his fare inquired of the conductor, "Medicine?" "No thanks, I am feeling quite well today," replied the conductor.

The passenger looked puzzled but later when the conductor called out Madison street, he got off after giving the conductor a hard look.

And here is another one:

A large woman peddler boarded a Lawrence avenue car with a basket of vegetables and presented an invalid transfer.

The conductor told her that she couldn't ride unless she paid another fare. She refused and as she reached the street with her basket she selected a good-sized soft cabbage and without warning let the conductor have the full benefit of it as he started the car.

Writing of the flood in Pittsburgh, C. W. Wilson, manager of the research department of the Pittsburgh Railways Company says:

"All Pittsburgh was very hard-hit. Many of the buildings in the downtown section that have never before been affected by high water are still out due to electric cable trouble. A great deal of underground work between Smithfield street and the junction of the two rivers has had to be replaced."

The unusual sight of a snake wriggling across a platform caused a mild turmoil in an uptown Interborough Rapid Transit subway in New York the other day. The woman who discovered the snake emitted a yell and ran, and a police emergency squad of five burly policemen responding found the snake. Putting on heavy gloves the policemen captured the snake and put it in a can. It died—probably from fright at looking at the policemen.

Hall Well Equipped

New Superintendent of Transportation Has Wide Experience

No appointment in the Surface Lines organization in recent years has met with such general approval as the selection of William A. Hall to succeed the late Mr. Evenson as superintendent of transportation. His thorough knowledge of the problems of operation and his wide acquaintance among the men admirably fit him for his new responsibilities.

Although Mr. Hall was born in Chicago, he removed with his parents to Iowa in his youth and began his career in a newspaper office. His father ran a small Iowa paper and when Mr. Hall started out for himself he went to the neighboring city of Creston, Iowa, and got a job as a reporter on the *Creston Advertiser*. The larger opportunities afforded by a big city induced him to quit this job and come to Chicago, but here he found that as a street car conductor he could make more money than he could as a reporter. His first job was as a conductor on the old 22nd Street line of the Chicago General Railway Company. That was in 1898. He liked the work and stuck to it.

Wins First Promotion

Some four months after he secured this job he overheard Superintendent J. I. Jones discussing with someone else how to figure the cost of coal per horse power. He spoke up and explained how he would do it. Mr. Jones told him that he was just the man he was looking for and had him report for duty in the general office the next day.

Afterwards he was made night foreman at the car station at 30th Street and Kedzie avenue and Mrs. Hall, whom he had recently married, acted as receiver for a short time. She was the only woman receiver in the history of the local properties.

From that position he advanced to supervisor and assistant superintendent of transportation.

Goes to Union Traction

Financial troubles of the Chicago General Railway in 1903 threw him out of a position but he immediately secured a place as motorman for the Union Traction Company, and in 1907 was made a supervisor for that company.

Following the unification of the properties, Mr. Hall was appointed assistant division superintendent at the Lawndale depot, and in 1922 was assigned to special work in the general offices of the Surface Lines.

Assistant Superintendent

On October 1 of the following year he was appointed division superintendent at North Avenue, and exactly two years later was appointed assistant superintendent of transportation under Mr. Evenson.

In that position he has been in intimate touch with all of the intricate problems of the operation of the largest surface local transportation system in the world under one management. With the background of his experience on the cars, as a supervisor, and as the superintendent of the largest division in the city, he is remarkably well equipped for the important position he has now assumed.

President Richardson announced the appointment on March 16.

Last year the employes of the Chicago Surface Lines worked 35,810,580 hours. This equals 1,492,107 days and is equivalent to 4,088 years. Measuring time from today, this goes back to B. C. 2152.



William A. Hall

JOHN P. BURKE DIES

Veteran Cashier Expires at Residence on March 20—Other Deaths

John P. Burke, cashier of the Chicago Surface Lines, whose sixtieth anniversary of service was celebrated at a dinner given by the management last October, died of pneumonia at the family residence, 6646 Stony Island avenue, at 7 P. M. March 20. The funeral services were held from St. Laurence's church, 1340 East 72nd street at 9:30 A. M., March 23, and interment was in Calvary cemetery. Officials and a large number of his friends from the Surface Lines organization attended the funeral.

Mr. Burke's first connection with the Surface Lines was in 1875 as assistant to C. B. Holmes, who was in charge of transportation of the Chicago City Railway Company. At that time the State street line operated only as far as 39th street, and the Cottage Grove avenue line from Indiana to 55th street. The one-horse bobtail cars gave place to larger two-horse cars a month after he entered the service.

Mr. Burke served under seven presidents of the Chicago City Railway Company. In 1882 he was made paymaster of that company and in 1907 was appointed assistant treasurer. With the unification of the surface lines in 1914 he became cashier of the Surface Lines, still retaining his position as assistant treasurer of the Chicago City Railway Company.

Mr. Burke was born in Chicago on October 5, 1858. Surviving are two sons, Robert J. and John Raymond, and a daughter, Marion T. Burke.



John P. Burke

Other Deaths

Other deaths on the system during the month were:

Transportation—General Office: Christian H. Evenson, employed April 15, 1908, died March 11, 1936.

Division 1, Cottage Grove: Edmund Baker, employed December 15, 1892, died March 1, 1936.

Division 2, Burnside: Herman Sielaff, employed September 7, 1898, died March 22, 1936.

Division 3, Seventy-seventh: Gustaf Adolf Borg, employed March 12, 1918, died March 15, 1936; Anthony McDonald, employed March 1, 1889, died March 3, 1936; Nels Olson, employed January 25, 1901, died March 17, 1936; John Reedy, employed May 24, 1913, died March 7, 1936.

Division 4, Sixty-ninth: Charles A. Kuntzman, employed January 21, 1920, died March 21, 1936.

Division 6, Blue Island-Lawndale: Andrew J. Carlson, employed September 5, 1899, died March 30, 1936.

Division 7, Kedzie: Thomas Flatley, employed May 25, 1905, died March 19, 1936; Owen Rogers, employed October 20, 1921, died March 20, 1936.

Division 8, North: Andrew Bergman, employed March 18, 1896, died March 11, 1936; Alvin O. Solberg, employed February 16, 1918, died March 1, 1936.

Division 9, Armitage-Division: Patrick Foley, employed January 19, 1926, died March 14, 1936; Michael Russell, employed October 24, 1902, died March 25, 1936.

Division 10, Elston-Noble: August Bohnhoff, employed October 27, 1882, died March 20, 1936; August Hultman, employed October 18, 1889, died March 31, 1936.

Division 12, Devon-Limits: Carl William Larson, employed May 25, 1921, died March 23, 1936; Peter Swanson, employed March 7, 1908, died March 3, 1936.

Material and Supplies—John W. Swoik, employed November 19, 1930, died March 24, 1936.

Shops and Equipment—Division 3, Seventy-seventh: Gust Poulos, employed November 6, 1918, died March 2, 1936; John Sarsavage, employed December 15, 1916, died March 5, 1936.

South Shops: John H. Carlson, employed April 10, 1891, died March 10, 1936.

West Shops: John A. Vihnanek, employed October 23, 1918, died March 24, 1936.

Track—Sam Kriscunas, employed October 6, 1930, died March 23, 1936; Frank Mariano, employed April 1, 1903, died March 22, 1936; Dennis P. Shea, employed February 10, 1925, died March 21, 1936.

FINED FOR POSTING BILLS

For posting bills on trolley poles at Roosevelt road and St. Louis avenue, Harold Salkind was fined \$10 and costs by Judge J. M. Braude in the boys' court on April 3.

The prosecution of Salkind is a part of the campaign of the Metropolitan State Civic Council to prosecute the posting of bills on poles and buildings throughout the city. In addition to the attorney representing the Council, an attorney for the Chicago Surface Lines was present and assisted in the prosecution.

MRS. EVENSON EXPRESSES APPRECIATION

I want to take this means of expressing to all officials and employes of the Surface Lines my deep appreciation for the many kindnesses shown me in my hours of bereavement. The many personal calls and expressions of sympathy and the beautiful floral gifts were a great comfort to myself and the boys at a time when we sorely needed comfort.

Mrs. Christian H. Evenson

Can Make Ride Pleasant

Correspondent Commends Little Acts of Kindness by Trainmen —More Complaints in March

If one were writing an editorial on courtesy, he could not do better than Mrs. Libbie Siegel, 13325 Brandon avenue, does in a recent letter to the Chicago Surface Lines commending Operator Martin L. Schroeder, badge No. 549 of Burnside. After declaring that Operator Schroeder's courtesy to all is something for which he should be blessed, she adds this:

"It is indeed true that you get more than your seven cents' worth when riding on the Surface Lines, but it is up to those who have the power to make your ride enjoyable or otherwise to act accordingly. Helping a tired mother and children off the car, saying good night when one is getting off the car, and many other little kind acts are symbolic of Mr. Schroeder. I know the gentleman only from the Surface Lines but feel that if all the employes would be told how the citizens of Chicago appreciate courtesy, they may realize that their actions are being commented on. It may encourage them."

Respects the Public

Mrs. Emma Henrici, 5005 South Loomis street, makes a similar comment in commending Conductor Albert R. White, badge No. 1172 of Sixty-ninth, as an employe who respects the public, his employer and his job.

"If only your company had more men of this kind," she says, "the public would love to ride street cars. At present so many of your conductors and motormen make the intelligent public feel that they are doing the people a favor to take their fares, to answer their questions, or give information on transportation—or even to allow you to ride on the cars, for that matter."

The courtesy report for the month of March does not make a very good showing. There were a total of 627 complaints as compared with 492 complaints in the corresponding month of the previous year. There were 50 commendations as compared with 53 in March, 1935.

Twenty-three per cent of the complaints were because of discourtesy, 20 per cent because of transfer punching, and 16 per cent for passing up.

Of the 50 commendations received, many were lengthy, highly commendatory letters, written by passengers who have experienced unusual courtesy at the hands of Surface Lines trainmen.

Does It Cheerfully

Such a letter was received from Miss Carroll M. Whitney, 1910 Elston avenue, in which she says of Operator Arthur E. Petterson, badge No. 372 of Noble: "He never seems to miss an opportunity to deliver just a bit more in the way of cheerful service and accommodation than a reasonable person could possibly expect." She also comments on the pleasing personality and good will promotion of Supervisor John F. Schultz of Armitage.

Charles G. Schiffner, 185 North Wabash avenue, comments favorably on the conduct of Conductor Milburn K. McElroy, badge No. 8100 of Seventy-seventh, who was observed assisting a blind passenger and a crippled one.

The efficiency of Conductor James Drinan, badge No. 830 of Lincoln, was noted by Benjamin A. Dean, 5714 Grand avenue, who says this conductor called every car stop, answered questions civilly, and assisted passengers in boarding.

Howard Werch, 708 West Madison street, commends Motorman Robert E. Heinze, badge No. 1021 of Kedzie, for his cool-headedness and expert handling of the car, which saved the lives of a number of his passengers.

Waits for Passenger

Cecile R. Henning, 2143 West 23rd Street, is an appreciative street car patron, and he has a kind word to say for Operator Charles L. Fish, badge No. 3018 of Blue Island, who has on several occasions held his car to allow Mr. Henning to board.

Francis Bily, 6544 Ingleside avenue, writes that while most conductors grumble at having to give a passenger an Elevated transfer because they don't like to go to the trouble of punching it, Conductor John R. Kelly, badge No. 3880 of Cottage Grove, does it cheerfully and with the words "Yes sir—O.K."

Miss Betty Fister, 824 Center street, wishes to compliment Operator Louis J. Spiegel, badge No. 5020 of Noble, who picked up her purse and turned it in.

Mrs. George W. Ewain, 5655 Drexel avenue, expresses appreciation of the conduct of Operator William H. Stopp, badge No. 8550 of Archer, in handling an inebriated passenger who wanted to make trouble on the car.

The cheery tone and polite words of Conductor John R. Hutten, badge No. 8712 of Limits, won the admiration of Stanley Belland, 5207 Milwaukee avenue.

Patrick J. Kelly, 1510 East 62nd street, noted the kindness of Operator Donald J. Sherman, badge No. 8804 of Sixty-ninth, who assisted an elderly passenger to the sidewalk.

Assistance Given

Nick DeFina, 1217 Eddy street, compliments Conductor William J. Ryan, badge No. 9034 of North, for his kindness in assisting him on the car with a large bundle.

To give credit where credit is due, Mrs. K. Clinton, 5950 Lake street, reports that Operator John Greenwald, badge No. 9199 of North, was very considerate in stopping his car as he saw her running for it.

Miss Margaret Burns Pickard, 1322 East 47th street, states that Conductor Thomas J. Murray, badge No. 9938 of Sixty-ninth, was very kind to her in assisting her to board and alight from the car.

SURFACE SERVICE MAGAZINE

Published Monthly by
Chicago Surface Lines
231 South La Salle St.
CHICAGO

Volume 13 April, 1936 No. 1

H. O. Crews - - - - - Editor
C. L. Altemus - - Assistant Editor

A FINE RECORD

That approximately half of the trainmen on the Chicago Surface Lines ended the year 1935 without a single chargeable accident is big news. When to that is added the fact that 935 have had no chargeable accidents for nine consecutive years, it is easy to see that the street car is in fact the safest place in the streets.

While the record in some classifications of accidents, particularly fall-in-car and boarding and alighting accidents, makes a very poor showing for the past year, in some other respects the record is remarkably good. The lowest number of fatalities in the history of the Surface Lines, and a clear record of fatalities of men working in the street and of the loss of eyes in the Track and Roadway Department, are splendid examples of what can be accomplished by co-operation.

In the present year the aim of every employe of the Chicago Surface Lines should be to have an absolutely clear record on chargeable accidents.

MERIT WINS REWARD

Again it has been demonstrated in the Chicago Surface Lines organization that ability, industry and initiative are recognized and rewarded.

William A. Hall started at the bottom in local transportation in Chicago, but he did not stay there. As his true merit was recognized he was moved forward from one responsible post to another, and in every one of them he made good.

For the past 10 years he has served as the able assistant of Mr. Evenson, and when death ended the career of that able Superintendent of Transportation, the management did not hesitate in appointing Mr. Hall to the place.

He is peculiarly fitted by training and temperament for this position, which is one of the most difficult and one of the most important in the industrial life of Chicago.

EMPLOYEES RELIEF FUND

March 1936

The Surface Lines Employes Relief Committee held 5 sessions during the month, at which 28 applications were considered. Of this number there were 23 applicants approved for weekly relief payments and 1 emergency case on which immediate aid was given, making the total on this list at the present time 294.

Checks totaling \$12,905 were distributed. This sum, together with distributions since December, 1930, heretofore reported, makes a total of \$733,368.28 paid to Chicago Surface Lines employes to date.

The Surface Lines Employes Relief Committee, in addition to the above disbursements to employes, paid a total of \$120,000 to the Joint Emergency Relief Association during the period from November, 1931, up to and including October, 1932, making the total expenditures by the Committee \$853,368.28.

Surface Lines employes have also contributed to the Emergency Welfare and Community Funds, over and above the disbursements handled by the Surface Lines Employes Relief Committee, a total of \$119,820.54, which brings the grand total of relief expended to \$973,188.82 to date; and further, the sum of \$60,000 has also been pledged for the 1936 subscription to the Community Fund, the first installment on which will be paid during the month of April, 1936.

SIM SUCCEEDS SOLBERG

One of the first official acts of William A. Hall as superintendent of transportation was the appointment of Stuart D. Sim as assistant division superintendent of North Avenue. He succeeds A. O. Solberg who died recently.

Mr. Sim entered the service as a trainman at North Avenue in 1923. Later he was transferred to Kedzie but returned to North Avenue as a bus operator in 1932. He was promoted to the position of starter the same year, and in 1933 he was made a supervisor and was detailed to Century of Progress service. After the Fair he was assigned to the central division and later returned to North Avenue.



S. D. Sim

CAR ROBBERS CONVICTED

Two Paroled Convicts Sentenced After Robbing Conductors—Others Caught

Two paroled convicts, Raymond Agnew, 28, and Richard Breen, 23, were found guilty in the criminal court on March 24 of robbing Conductor Sidney C. Balderman of Archer, and were sentenced to the penitentiary by Judge Cornelius J. Harrington. Agnew, who had been paroled from Joliet, was sentenced to 20 years as a habitual criminal, and Breen, who was paroled from a Pennsylvania penitentiary, was given 1 year to life.

The robbery of Conductor Balderman occurred at Lake Park avenue and 56th street on the night of February 26. Following the arrest of Breen and Agnew he identified them as the robbers.

It is believed also that this same pair had been engaged in other robberies of conductors, including Conductor A. E. Shepherd, badge No. 2706 of Archer, at 47th street and Racine, Conductor Norman Leaf, badge No. 2852 of Sixty-ninth, at 618 West 39th street, and Conductor J. W. Murray, badge No. 4566 of Sixty-ninth, at 29th and Wallace.

Two other hold-up men who robbed conductors also have been sentenced to the penitentiary.

Edward W. Shurah was sentenced by Judge Dennis Normoyle on two charges, for a term of 1 to 10 years on each charge, the sentences to run concurrently. He was convicted of robbing Conductor Ernest W. Bock, badge No. 10358 of North Avenue, at Grand and Leavitt street on the night of March 1, and Conductor Cormack Flanagan, badge No. 12872 of North Avenue, at Lake and Racine on the night of March 7.

Tony Kanavlisikis also was sentenced by Judge Normoyle to a term of 1 to 10 years for robbing Conductor C. V. Hunter, badge No. 402 of Seventy-seventh, at Archer and 21st street, on March 6; Conductor James O'Gara, badge No. 9802 of Devon, at 26th and Wentworth on March 16, and Conductor Matthew Lafferty, badge No. 5106 of Seventy-seventh, at 18th and Halsted on the same evening. All three conductors identified him.

Attorneys representing the Surface Lines appeared in all of these cases and assisted in the prosecution.

With this broad-sided attack on street car hold-up men, criminals are becoming discouraged in their efforts to victimize conductors and take their receipts from them.

CHIEF SURGEON DEAD

Dr. M. L. Harris, for 37 Years CSL Surgeon, Dies at Sanitarium

Dr. Malcolm La Salle Harris, aged 73, who had been chief surgeon of the Chicago Surface Lines since 1899, expired at the Milwaukee sanitarium at Wauwatosa, Wisconsin, on March 22, after a long illness.

Dr. Harris was recognized as one of the most competent surgeons in Chicago. He was a former president of the American Medical Association and at the time he became ill was

chief of the staff of the Henrotin and Alexian Brothers hospitals and professor of surgery at the polyclinic graduate school connected with Henrotin. He first became ill in June, 1934, when he fell in a faint as he was preparing to operate on a patient. More than a year ago he went to the Milwaukee sanitarium where he remained until the time of his death.

In addition to his surgical work for the Chicago Surface Lines, he served on a number of clinics and advocated low cost medical care as a means of extending professional service to persons of small incomes. On several occasions he criticized members of his profession for charging what he termed "extortion fees."

Born in Rock Island county and educated in the public schools in Iowa, he graduated from Rush Medical College in 1882 when he was 20 years old. He served his internship at the Cook County hospital, afterwards practicing medicine for a number of years at 25 East Washington street.

KEEPING 'EM ROLLING

Noble, Burnside and Devon Win Honors for March

Noble leads the group for March with an average of 9,157 miles per pull-in due to equipment failure. This was a 144.2 per cent gain over the previous month's average.

Burnside followed with an average of 6,163 miles per pull-in and a 146.0 per cent increase.

Devon held third place with 5,623 miles per pull-in to their credit and an increase of 66.6 per cent over last month.

All 16 carhouses showed an increase over the previous month, the minimum being 22.6 per cent and the maximum being 152.0 per cent.

The average for entire system was 73.1 per cent higher than for February.

Individual records follow:

Rank	Carhouse	Zero Days	Miles per Pull-In	Pct. Inc.
1	Noble	9,157	144.2
2	Burnside 2	6,163	146.0
3	Devon	5,623	66.6
4	Lawndale	5,239	55.6
5	North	4,995	31.2
6	Cottage Grove	4,873	75.2
7	Division 1	4,830	22.6
8	Elston 4	4,665	103.8
9	Archer	4,576	118.5
10	Limits 3	4,487	89.0
11	Armitage	4,148	50.8
12	69th	3,873	67.3
13	77th	3,507	63.0
14	Kedzie	3,302	34.4
15	Lincoln	2,550	152.0
16	Blue Island	1,808	43.5
		10	4,110	73.1

Carhouse records for the past six months:

Carhouse	Mar.	Feb.	Jan.	Dec.	Nov.	Oct.
Noble	1	3	10	12	12	15
Burnside	2	8	8	5	9	2
Devon	3	4	6	8	8	5
Lawndale	4	5	5	6	1	6
North	5	2	1	2	3	7
Cottage Grove	6	6	2	1	4	3
Division	7	1	4	4	7	16
Elston	8	11	12	10	2	1
Archer	9	14	11	9	11	11
Limits	10	10	13	14	14	13
Armitage	11	7	7	13	5	9
69th	12	12	9	7	6	12
77th	13	13	14	15	15	4
Kedzie	14	9	3	3	10	14
Lincoln	15	16	15	11	13	10
Blue Island	16	15	16	16	16	8

With a married man it's one darned thing after another. With a bachelor it is just one undarned thing after another.

TELLS OF WORLD TOUR Willis Helfrich Gives Illustrated Account of Trip in Clubhouse Talk

Fellow employes of Willis Helfrich of the Department of Accident Investigation crowded the clubhouse on the evening of March 24 to hear his interesting account of a trip around the world, illustrated by motion pictures. This four-year tour was related in 90 minutes, and the interest of the audience was not allowed to lag as the speaker carried them in spirit through strange places and experiences.

Mr. Helfrich, who has been an employe of the company for 2 years, worked his way around the world. He started from New York in October, 1930, with the intention of completing the globe circuit on that trip. After getting as far as Italy he found it impossible to go east through the Suez canal, and he returned to New York, reaching there in May, 1931. After a delay of about one year in California he made a new start by water from San Francisco and completed his trip by taking in various countries of the Orient.



Willis Helfrich

The speaker has an easy manner of relating his experiences and his well-selected motion pictures brought out some of the characteristics of the people and the architecture of foreign lands. He was recognized by his audience in several of the groups, even with the heavy beard which he accumulated on board ship. As a Boy Scout of 16 years' experience he was welcomed by his fellow Scouts in several countries.

Mr. Helfrich was introduced by W. R. McConochie of the Schedules Department.

ROUNDING UP WITNESSES Burnside Drops to Fifth Place—Lawndale-Blue Island in Lead

For the first time in many months, Burnside was not one of the two leaders in the February rounding up witnesses contest. This division is now in fifth place, and Lawndale-Blue Island moved into Burnside's usual position at the head of the list. Lincoln suffered a set-back, moving down from eighth to tenth place.

The average for the system gained three-hundredths of a point, from 3.35 in January to 3.38 in February.

Detailed figures are as follows:

	Feb.	Jan.	Dec.	Nov.
1. Lawn-Blue Isl.....	4.15	3.65(2)	4.23(1)	4.26(2)
2. Elston-Noble	3.95	3.64(3)	3.55(4)	3.87(4)
3. Archer	3.72	3.61(4)	3.43(6)	3.74(5)
4. 69th St.	3.67	3.60(5)	3.67(3)	3.64(7)
5. Burnside	3.49	4.18(1)	4.20(2)	4.50(1)
6. 77th St.	3.45	3.58(6)	3.54(5)	3.66(6)
7. North Ave.	3.40	3.90(10)	3.20(8)	3.25(9)
8. Cottage Grove	3.39	3.50(7)	3.34(7)	4.02(3)
9. Kedzie	3.02	3.05(9)	2.93(10)	3.35(8)
10. Lincoln	3.01	3.19(8)	3.04(9)	2.98(11)
11. Limits-Devon	2.77	2.97(11)	2.82(11)	3.06(10)
12. Armitage-Div.	2.68	2.75(12)	2.61(12)	2.34(12)
Aver. for System	3.38	3.35	3.34	3.50

THOUGHT FIGURE LOST

A passenger on a through route No. 2 car operated by Conductor Arthur Bishop of Division depot takes the prize for deductions.

When the car reached the end of the line at Clybourn and Belmont avenues, this passenger remained in his seat and Conductor Bishop went to him and told him that it was the end of the line.

"How's that," he said, "doesn't this car go to Rosehill cemetery?"

"No," the conductor explained. "This is through route No. 2 and you should have taken through route No. 22."

"Well," the passenger said, "I knew that and I saw that this was No. 2, but I thought maybe you had lost one of the 2's."

Departments and Divisions

Accounting

On March 23, Conductor E. Dalasky, 77th Street depot, sent in a refund slip in the amount of 7 cents with the following explanation: "A man with big feet stepped on kicker (electric)."

Sympathy is extended to the bereaved families of John P. Burke of the treasury division, who passed away on Friday, March 20, and of William Burns of the timekeeping division, whose mother passed away Wednesday, March 18.

At this writing we are sorry to report Miss Emma Miller of the pay roll division on the sick list, but are looking forward to her speedy recovery.

T. F. Coan.

Electrical

The mystery that surrounds the congratulations extended to Julius Boisacq in the March issue wasn't what so many thought it to be. It was a birthday celebration. When Julius arrived at work on the morning of his birthday, much to his surprise he found his desk covered with flowers and later he was presented with a large carton containing many useful things, as well as some not so useful. One would get the idea that a rummage sale was unfolding its wares. That is one birthday Julius will long remember.

Superintendent Frank Roper of the line department was suddenly called to his home town, Topeka, Kansas. The news Frank received was that his aged father had been stricken with pneumonia. We all regret hearing this sad news.

Felix Girard, emergency lineman at Grand and Leavitt, has returned to his usual work after a long siege of illness, suffering from an attack of pneumonia. Glad to see you back again, Felix.

Frank Dorsch, of the line department at Grand and Leavitt, lost his father. The department extends its heartfelt sympathy to the Dorsch family.

George Clark of the meter testing division reported having a most pleasant and interesting trip to Florida and back home by way of

Texas. George says he is sure he visited all the historical places. Mrs. George Clark and family accompanied George on this delightful trip.

Billy

Material and Supplies

We regret to report the death of John Swoik on March 4. To his family we extend our sincere sympathy.

We also offer our condolences to John Vihnanek in his bereavement over the death of his father.

R. E. Buckley.

Shops and Equipment

South Shops: We regret to report that John H. Carlson, truck department, passed away on March 10 after a long illness. Mr. Carlson, who had reached the grand age of 80, had worked for the company at the South Shops since January 13, 1903, and during that time had made many friends who mourn his passing. To his bereaved family and relatives we extend our sincere sympathy.

Cottage Grove: Old Doc Stork delivered a baby girl, weighing 7 pounds, at the home of Michael Mahoney, and is daddy strutting around! Congratulations to Mother and Dad and best wishes for the baby.

Elsie S. Frank.

West Shops: We offer our congratulations and best wishes to A. Bykowski (Kid Hudson) of the machine shop at the West Shops, who is the proud father of a 7 pound baby girl born on February 5.

We regret to report the passing of J. Vihnanek, carpenter at the West Shops, on March 24. Mr. Vihnanek had been in the service of the company since 1910. We offer our deepest sympathy to his family and friends, and particularly to his son, Tony Vihnanek of the drafting room.

Yvonne Randall.



RECENTLY MARRIED

Robert M. Sedlack, schedule clerk in the Schedule and Traffic Department, and Miss Anna E. Murduck were married on March 21 in Miss Murduck's home at Niles, Illinois. The couple are now at home at 4625 Drexel boulevard.

Around the Car Stations

Cottage Grove

A number of our men are still on the sick list and a visit from some of the boys will be appreciated. Ask the clerk for addresses of the following: J. H. Pickin, J. King, J. R. Cook, E. Y. Hitchcock, E. Welin, J. Burke, W. Collins, W. E. Loos, and B. Hanson.

Quite a number of our men are back to work after a spell of sickness and we are glad to see them back in the pink of condition.

Motorman J. W. Kynaston died on April 4 after a very serious operation. He was the father of George W. Kynaston, relief receiver, to whom sympathy is extended.

A soft ball team is in the making and all who can should get out and enjoy the benefits of the fresh air, sunshine and exercise.

Seventy-seventh

Starter Frank P. Flanagan, stationed at 79th and Halsted streets, lost his mother last month, and we offer him our sympathy in his sorrow.

Motorman Anthony W. (Rusty) McDonald, after a long illness, passed away last month. At the time of his death he was staying with one of his daughters who lives on the north side. "Rusty" was one of our pioneer motormen.

We offer our deep sympathy to the families of our late trainmen: Motormen Gustaf Borg, Nels Olson, and John Reedy.

We express our condolence to the following trainmen in the death of loved ones. Conductor Thomas Richardson, his mother; Conductor Patrick McCann, his brother; and Motorman Michael Reynolds, his daughter Anna, age 16.

The following trainmen, who have either been operated on or confined to their homes due to illness, are convalescing and expect to report back to work in the immediate future: E. E. Schillo, D. Sullivan, E. K. Thompson, and W. Martin.

John T. Flynn.

Sixty-ninth

On Sunday, March 8, Conductor Frank J. Vyzral's home was blessed by the arrival of a 9 pound baby boy. Mother and baby are doing fine. Congratulations to Frank.

Our sympathy is extended to Conductor John F. Henry and Motorman William J. Henry in the death of their mother.

Arthur R. Lipphardt.

Archer

Sympathy is extended to Conductor J. E. Maher on the death of his father who died March 23.

Archer depot is again represented on the Chicago police force since Conductor Frank Kondilik was called for police service. We are wishing him well in his new position.

Bus Operator C. E. Burrier, who met with an auto accident several months ago, is out and

around again and made a visit to the boys at the depot on March 25. The boys were glad to see him.

Clerk Charles Vanek was promoted to combination clerk at Noble depot. While we are glad to learn of the promotion and wish him success, we are going to miss that gentle voice.

Bus Operator Denver Lewis Worker reports the arrival of a son at his home on Sunday, March 15, who takes the name of his dad. Congratulations are now in order.

Conductor J. Finn, who met with an auto accident on his way to work several weeks ago, was seen around the depot walking on crutches. He has the wishes of the boys for a speedy recovery.

Conductor Raymond Lohse is the proud father of a son born March 27, who answers to the name of Donald Lohse. Congratulations.

Dusty.

Lawndale

One more member in the family, an 8½ pound girl was presented to Conductor Patrick Gilroy.

Division Six welcomes the following new men: Motormen William Moloney, James McInerney, Bernard Carroll, and Vincent Foley. Charles F. Karschnik.

Kedzie

Our old time receiver, Oscar Hansen, was transferred recently to Division Street depot to take up the receiver's work there. Guess it will seem like old times again, Oscar, and here is wishing you luck. To his successor, Kenneth Burnell, who transferred to this depot from North Avenue depot, we extend a hearty welcome.

Motorman James Griffin, who had every intention of staying in the sunny south until after the cold weather was all gone, was called back March 14 to appear in a court case. On the day he arrived here it was about 30 degrees above zero and he was heard to remark that it was really cold up here. Jim, you don't know what you missed.

Conductor Owen Rogers, who signed the sick list in July, 1928, died March 20 in the U. S. Veterans' hospital in San Fernando, California, and Conductor Thomas Flatley, one of our old-timers, died March 19 after an illness of several years.

Conductor Owen McGowan reports he is the daddy of a baby boy born a few minutes after midnight March 1, so was almost a leap year baby; but who wants to have a birthday only once in every four years.

Conductor Joseph E. Benisek and Earl Allen are in the Speedway hospital for repairs.

Clinton Sonders.

Armitage

Introducing our new receiver, William Boland, succeeding Louis Sikora who was transferred to the North Avenue depot. Mr. Boland comes from Noble depot where he served as receiver for a number of years.

That able seaman, Samuel Sovereigns, could be seen chopping ice from around his good ship at the north branch of the Chicago river as the first signs of spring made their appearance. Sam says that it's going to be a great year for the water boys.

Conductor Patrick Foley passed away after a short illness on March 13. The funeral was

from his late residence, 4913 North Lowell avenue, thence to St. Edwards Church, interment at All Saints cemetery. Our sympathy is extended to his loved ones.

Our sympathy is extended to Supervisor Emil Gagler on the loss of his wife who passed away March 21, 1936.

Robert O'Connor.

Division

We welcome back the following trainmen who have been off duty for several weeks on account of illness: Conductor Ernest Evanson, and Motormen R. Ruud, Charles Traeger, Martin Grannon, and Patrick Manley. Conductor Peter Balkiewicz, who is still off, has been seen in the trainroom at the checker table again. He still has his big smile for everyone who greets him. Here's wishing him a speedy recovery. Greetings are extended to our Night Receiver Claude Boos who has been off sick since March 2. Here's wishing him a speedy recovery.

We extend our welcome to the new night receiver Mr. O. Hansen, who came from Kedzie depot. Here's hoping he will like his new position and find all trainmen as friendly as those at Kedzie depot.

Conductor James Sweeney left the first of April for Hot Springs for 30 days to take baths. It is hoped that he will have a pleasant stay and will return in good condition.

E. B. Peterson.

Noble

The stork has been very active of late, bringing new arrivals to the homes of the following employes at this depot: Motorman Henry Purvis is the proud father of a baby boy; Conductor Martin Sexton the proud father of a baby girl; Conductor Alfred Kurth the proud father of a baby girl; and Relief Clerk Jack Cleary, who is also the proud father of a baby girl. Congratulations and best wishes to them all for a bright and happy future.

Motorman August Bohnhoff, the oldest employe at this depot with 54 years seniority, died on March 20 after a short illness of about two weeks. The funeral was held on March 24 and the following co-workers acted as pallbearers: William Kuch, Fred Kuntz, Louis Kuntz, Albert Reiner, Charles Newbauer and Eward Allen. Sympathy is extended to the family.

Sympathy is also extended to Conductor John Clark in the loss of his wife, and to Motorman Daniel Milbrandt in the loss of his mother.

Edward Devine.



An April snow—maybe the last this year.

No-Accident Honor Roll

See Article on Page 3

DIVISION No. 1—COTTAGE GROVE

ONE YEAR MEN

Conductors

Name	Badge	Name	Badge	Name	Badge	Name	Badge	Name	Badge
Hopkins, T.	350	Gilson, F. G.	2538	Graves, W. B.	6684	Mallon, J. J.	9510	Gillen, C. A.	10726
McKeon, M.	368	Waters, M. J.	3490	Cordrey, W.	6836	Alford, R. G.	9954	Kubhlien, J.	11396
Demarais, J.	1056	Rafter, P. J.	4206	Sheehy, W. F.	7352	Hjortsvang,		Moriarty, W.	11510
Shewry, R. A.	1196	Thom, C. M.	4252	Sullivan, E. P.	7934	A. V.	10306	Ronschke, F. W.	11714
Broad, J.	1264	Clemons, C.	4426	Sherman, E.	8130	Reynolds, P. J.	10316	Eckel, W.	12906
Stage, W. J.	1664	Kane, J.	4598	Durkin, T. F.	8840	Mulqueeny,		Christenson, A.	13754
Smith, H. No. 2	2226	Bartley, H. E.	5740	Prather, L. W.	9084	J. L.	10366	Holbert, D. E.	14348
						Bcaman, W. O.	10624	Beren, A.	14388

Motormen

Mahoney, M.	379	Detlefsen, C. J.	1721	Duffy, M. J.,		La Fontaine,		Griffen, M. J.	11193
Anderson, M.	417	Duncker, J.	1725	No. 1	3767	C. O.	7783	Rochford, M. J.	11207
Shaw, J.	1023	Mitchell, M.	1867	Haynes, G. H.	3945	Butler, B. A.	8769	Rusch, J. C.	11597
Prellberg, G.	1139	Erb, J. M.	2249	Busch, J. C.	3955	McCartney,		Brennan, P.,	
Rhind, J.	1145	Saxler, W. G.	2517	Vaughn, P. C.	4741	W. B.	9619	No. 2	11611
Gronert, W.	1285	Norris, R.	2623	Galvin, P.,		McLaughlin,		Daly, J.	11615
McGrath, H.	1443	Suhr, J.	2761	No. 2	6267	E. J.	9807	White, J. M.	11687
Gallagher, P.	1529	Noonan, T.	2813	Curfman, H. W.	6347	Becker, H. L.	9999	Scanlon, P. J.	11965
Robinson, R.	1561	Libke, W. F.	3033	Colledge, W. T.	6505	Buchler, F. J.	10827	Miller, N. W.	12171
Wilkinson,		Kynaston, J. W.	3461	Birker, W. W.	6769	Markby, J.	10855	Fahy, M.	13273
P. P.	1655			Olson, W.	7089	Payne, J. H.	11025	Hubert, P. J.	13511

TWO YEAR MEN

Conductors

Wilson, R.	1220	Murphy, T.	3020	Hartman, H. P.	5814	Horslev, M.	10518	Elsner, R. C.	12006
Connelly, J. J.	1326	Birmingham, J.	3448	Noonan, T. J.	7016	Hurlocker,		Rees, R.	12136
Mullen, J. T.	2002	Buckner, L. M.	4212	Rees, E. S.	8604	S. E.	10592	Whiteford,	
Ludwig, J.	2218	Palkke, H. C.	5086	Hannon, R.	10514	Stevens, A. L.	10620	T. J.	12868
						Grasz, P.	11680	Holbert, D. E.	14348

Motormen

Keane, J., No. 2	825	Martenson, P.	1471	Peterson, F. W.	3823	Prazsky, A. J.	5367	Miskell, G. C.	10803
Thom, W.	847	Fiedler, H.	1649	Kunde, A. H.	3825	Mitchell, W.	7405	Schweitzer, W.	11493
McHugh, P.	1353	Smith, A. J.	1675	Brennan, M. J.,		Morton, W. D.	8271	Winters, P. J.	12065
Crowley, D.	1385	Corrigan, T.	2751	No. 3	4073	Swanson, E.	10541	Jordan, W.	12567
Camalick, T.	1433	Malone, M. P.	3455	Anderson, J.	5345	Fitts, M. S.	10597		

THREE YEAR MEN

Conductors

Randle, C. A.	216	Nice, S. P.	1734	Sandberg, E.	5612	Hayes, P.	9382	Grundy, H. G.	12902
Pickin, J. H.	1174	Lodwick, A. C.	2580	Bliss, A. P.	5828	Benbow, A.	11006	Knapp, J. E.	13122
Lamar, L.	1510	Moore, E. T.	4048	Grace, B. S.	7508	Waters, P. J.,		Kees, J. J.	13932
Fay, E. W.	1608	Emerick, A. D.	4388	Popp, J. J.	7596	No. 2	11260		

Motormen

Duffy, M.,		Knudsen, J.	3963	Harris, J. F.	9347	Watson, R. C.	11347	Kaufman,	
No. 2	457	Mohrs, F. F.	4015	Reid, M.	10543	Schofield,		A. H.	13207
Miller, F. M.	1179	Bennett, J. F.	4067	Jepson, E.	10979	M. J.	11537	Ostrander,	
McNeil, E.	1543	Weiland, N.	4137					R. W.	13599

FOUR YEAR MEN

Conductors

Baker, E.	1076	Weihofen, H.	1902	Bauer, C. J.	4226	Cross, H. C.	10056	Gordan, J. R.	10408
Horan, W.	1242	Briggs, G. W.	3516	McMahon, E. F.	4956				

Motormen

Doherty, T.	1227	Henrich, A. H.	5425	Brown, W. M.	6909	Shulky, H. F.	10179	Clapp, E. H.	12555
Denash, P. R.	1271	Ryan, J.	5479						

FIVE YEAR MEN

Conductors

Jones, W. S.	1178	Kain, M. F.	2174	Thompson,		Gimpel, A.	4112	Sorenson, A. W.	4808
Cook, J. G.,		Schultz, W. O.	2834	C. E.	3992	Grant, L. R.	4204	Fleming, C. R.	4822
No. 2	1226	Stephens, L. J.	3468	Hirzseifen, J.	4110	Kinney, E. L.	4332	Riley, F. B.	8830
						McKeon, J.	13222		

Motormen

Reinke, O. C..... 3875 Jacobson, H..... 6497 Logay, J.....10205

SIX YEAR MEN

Conductors

Nelson, J..... 250 Werner, W. J... 2152 McCahey, P..... 2876 Carroll, J. C..... 7222 Enos, T. J..... 9440
 Dardis, M..... 1282 Filan, L. D..... 2346 Connolly, R. J... 3644 Riggs, E. A..... 8354 Buergermeier,
 McCullough, Kane, P..... 2692 Durkin, D. A..... 4476 Bitner, A. J..... 8334 W. 9666
 J. P..... 1322 Gorman, J. P... 2738 Northoff, N. J... 5688 Collings, S. B... 9354

Motormen

McDonald, J. J., Ross, O. N..... 1137 Jones, J. G..... 1281 Kenny, P..... 1627 Welin, E.11449
 No. 2..... 1027 Shaffer, C. A... 1275 Hanson, G. P..... 1367 Saunders, J..... 3723 Daly, T., No. 2...12321
 Fitzpatrick, T... 4081 Woods, E. L....12383

SEVEN YEAR MEN

Conductors

Lundberg, H..... 1194 Hovmoller, Lane, J. 2212 H. A., No. 1.. 4142 Heffernan,
 Hemmergren, A. 1278 A. P..... 1656 Barry, R. J..... 2782 Dudley, H. M... 4150 E. J.....11330
 Stenzel, W. T... 1634 Bird, R..... 1804 Kelly, J. R..... 3880 Steen, W. A..... 6962 Miskell, M. J...12378
 Andersohn, Sproll, A. W.....11216 Morris, M. J...13410

Motormen

Claxton, W. T... 1217 Nelson, N..... 2941 Armstrong, W... 7811 Thiele, P. H.....12371 Farrell, M. T...13099
 Cannon, J. 1455 Hoffman, G. A... 4271 Ronan, M.....12027

EIGHT YEAR MEN

Conductors

Costello, J. F..... 174 Tollstadius, Sorenson, A. F., Klingenhagen, McGeever, P.10274
 Hickey, C. J..... 634 C. P..... 1414 No. 1..... 4072 H. F..... 7320 E. J.....10638
 Fitzell, P. W..... 1154 Minning, A. H. 1558 Flanagan, R. J. 4236 Ammerall, Markham, J. H.11564
 Dineen, M. J..... 2762 Prindle, C. V..... 5714 W. E. J.....10238 Layton, R. G.....12360
 Russell, W. 4004

Motormen

Scanlon, G. T... 1079 Morris, D. F.....10797 Babbe, R. F.....12041 Daly, P. P.....12365

NINE YEAR MEN

Conductors

Horrigan, J. J... 252 Bolan, T..... 1152 Shea, F. 2570 Phillips, J. J..... 4050 O'Neill, D. 6496
 Jensen, W..... 486 Lovett, J..... 1186 Murray, J..... 2716 Kehoe, J. 4056 Murnane, M. J. 7196
 Lane, L. G..... 836 Cook, J. R., Boothby, E. 2864 Sliter, D..... 4070 Thorkelson, C. 7628
 McDonnell, No. 4..... 1236 Ricker, T. M..... 2914 Miskell, J. P..... 4156 Batzer, R. J..... 8192
 J. F..... 862 Bramier, F. W. 1262 Hitchcock, E. Y. 2932 McGoldrick, P... 4218 Condon, J. B... 9454
 McGuinness, A. 1000 Hirsch, M..... 1280 Hoekenberry, Mooney, J. E... 4256 Hanson, E. A... 9850
 Jones, B. B..... 1046 Wenham, J..... 1334 J. A..... 3152 Brown, J. E... 4376 Zigament, T. J...10932
 Fuchs, J..... 1060 Stenzel, H..... 1402 Haggerty, P..... 3168 Gilmour, C. R... 5080 McClintock,
 Sternberger, R... 1088 Brennan, J. E... 1474 Seefeldt, A. O. 3382 Berryhill, C. D. 5110 W. A.....11926
 Dwyer, J. J..... 1100 Potenberg, E. F. 1650 Eckel, C. J..... 3834 Fish, H. M..... 5422 Dimaline, F...12150
 Norton, J. C..... 1104 Hewitt, H. W... 1814 Ruchensam, Zboril, A..... 5754 Walsh, W. J...12400
 Spivey, H. T... 1130 Barsalow, E. H. 2000 H. H..... 4044 Size, M..... 5774 Fogarty, T. P...14160
 Dwyer, S..... 6202

Motormen

Berg, W..... 1035 Bowden, W. H. 2401 Donnelly, M..... 4113 Schweinfurth, Hanley, W. J...10183
 Sissner, A..... 1363 Walker, J. H., McKeon, F..... 4139 L. F. 5617 Gustavson, G...10753
 McGrath, M..... 1585 No. 1..... 3365 Kelly, L. J.....12123

DIVISION No. 2—BURNSIDE

ONE YEAR MEN

Conductors

O'Rourke, M..... 582 Eaton, C. L..... 2452 Downey, J. W. 5572 Glynn, F. J..... 7580 Knight, R.11930
 Best, C. F..... 610 Kropfel, V..... 3084 Britton, R. T... 5840 Cunningham, F. 8032 O'Neill, W. A...12238
 McGarvey, L..... 718 Reynolds, M... 4066 Michaels, C..... 5928 Botsford, G..... 8944 Borrowdale, L...12716
 Robinett, C..... 1436 Memsen, C..... 4118 Thornton, R. B. 6296 Barber, J..... 8980 Hurita, C. H...12790
 Schilling, W... 1552 Gibbons, R. C... 4316 Kurzweil, S. B. 6534 Conway, J. T...11266 Jones, M. E...13258
 Zelensky, C..... 2016 Scndzikoski, C... 4938 Freel, E. C..... 7242 Bassett, F.....11872 Enderlin, W. C.13330

Motormen

Neutout, A..... 413 Sauer, W..... 703 Heidekrueger, Fritsche, E..... 9009 Nelson, A.....11453
 Knospe, W..... 501 Gibbons, D. 745 A. 6033 Zesch, B. F... 9375 Denby, L. C...12357
 Crawford, B... 577 Farrell, B..... 781 Michels, O. A... 6049 Johnson, H..... 9483 Kelly, M.....12431
 Magnuson, N... 591 Donovan, J..... 789 Smith, M., No. Dandy, C..... 9531 Schober, J...12441
 Looram, P..... 639 Boomgarn, A... 1425 I 6533 Appel, T. C... 9539 Reed, F. H...13259
 Cyricos, G..... 701 Pozeck, C..... 4171 Hennelly, M... 7553 Martin, E.....11421

TWO YEAR MEN

Conductors

Name	Badge	Name	Badge	Name	Badge	Name	Badge
Patterson, W.	560	Hoogstraal, C.	5338	Dahlstrom,		Anderson,	
Follard, M.	706	Muench, R. A.	5984	A. E.	8452	S. A.	9720
Pallagi, S.	742	Crcarkin, E.	5998	Miller, F.	8478	Carr, J. R.	9976
McKenna, E.	1092	Landzaat, J.	6102	Stephens, R. J.	9178		
						Ferguson, A.,	
						No. 1.	10082
						Enderlin, D.	10544
						Cullen, C. J.	10794
						Benline, C. J.	12888

Motormen

Hanson, A.	165	Heinz, W.	723	Scally, T.	1661	Wamming, A.	8009	Weber, J.	10229
Moe, O.	543	Nelson, L.	923	O'Brien, J.	3415	Hibma, S.	8591	Kean, J.	10377
Schroeder, M.	549	O'Connor, P.	1189	Stahl, H. B.	4925	Gorman, E.	9115	Blummer, L.	10819
Clifford, M.	607	Costello, T.	1523	Heyen, W.	6913				

THREE YEAR MEN

Conductors

Termeulen, C.	2786	Andereggen, V.	5446	Mulcahy, M.	10418	McDonagh, A.	11248	Thieben, E.	12576
Colbert, M. J.	4214	Bjork, F. J.	6020	Fifer, E.	10492	Payne, G. R.	12482	Minga, J. A.	14212
Barron, J. A.	4584	Schieve, J. E.	6946						

Motormen

Peterson, A.,		Beazley, R.	1969	Gates, J.	5933	Conway, T.	9579	Bardwell, H.	11475
No. 2.	737	Merrill, W.	3505	Egan, J.	7047	Quinn, G.	11429		

FOUR YEAR MEN

Conductors

Reibly, J.	558	Swift, E. J.	4436	Olson, F. E.	8390	Day, N. C.	10672	Campion, R. J.	11858
------------	-----	--------------	------	--------------	------	------------	-------	----------------	-------

Motormen

Daly, J., No. 3.	163	Patno, A.	3605	O'Hara, J.	4059	King, J.	5603	Burke, E.	10867
Reyelts, H. C.	1283								

FIVE YEAR MEN

Conductors

Olsen, A., No. 1	590	Lindquist, A.	3062	Hansen, H. W.	9286	Anderson, W.	12634	Jacobson, C. L.	13942
				Schromm, F.	10506				

Motormen

Schultz, W.	283	Ryan, M.	335	Pries, L.	709	Thompson, C.	4465	Ryan, J. E.	10207
-------------	-----	----------	-----	-----------	-----	--------------	------	-------------	-------

SIX YEAR MEN

Conductors

McPheeters, G.	546	Ferguson, A.,		Keane, M. T.	2868	McGoldrick, C.	5382	Wright, W. J.	13040
Mayer, N. D.	1472	No. 2.	2230	Batka, S.	4102	Brennan, H. F.	10768	Medema, S.	14110

Motormen

Leske, E.	399	Mathias, J.	1981	O'Malley, O.	4325	McGill, J.	4771	Holland, G.	4957
Rowland, C.	589	McMahon, E.	2253	Wynn, E.	4613	Markette, R.	4949	Sullivan, P.	10213
Drasky, D.	661	Cunningham, F.	3705						

SEVEN YEAR MEN

Conductors

Jacobsen, J.	288	Brown, W.	3862	McGovern, J.	8868	Bagrowski, S.	11702	Matheson, D. T.	13616
Berg, F.	528	Higgins, W.	5522	Carson, D., No.		Redmond, J. A.	13196	Flaherty, M.	14490
Graham, P.	912	Ryskamp, R.	5544	2	9230				

Motormen

Nicholas, L.	595	Hoskins, J.	685	Fitzgerald, M.	4049	Booth, W. A.	10639	Kokos, M.	11581
Noonan, P.	621	Haglund, S.	795	Duffy, J. S.	4737	Lennon, T.	10705	Last, O. A.	12411
Haskell, C.	681	Conlon, J.	3479	Dignan, P. J.	7937				

EIGHT YEAR MEN

Conductors

Clemons, H. B.	584	McGuire, M.	880	Blain, L.	3278	Codner, R. A.	9042	Porter, I. W.	12844
Gasaway, A.	612	Booth, W. P.	1114	Fennessey, J.	4182	Lundy, R. H.	9336	Fox, D. J.	12876
Anderson, O.	642	Ashton, B.	2268	Leahy, T.	4942	Benson, C. H.	9488	Lally, J.	13050
Barnes, W.	650	Heisterberg, C.	2626	Miller, J. B.	8564	Karolich, R. N.	10008	Malloy, P. J.	13816
Lee, V.	666	Schmidt, J.	2992						

Motormen

Broderius, F.	547	O'Connell, J.	801	Daly, J., No. 1.	821	Quinn, W.	1511	Daly, J., No. 2.	11617
McDonald, D.	711	Brennan, T.	805	Limred, M.	823	Blaha, C.	4945		

NINE YEAR MEN

Conductors

Name	Badge	Name	Badge	Name	Badge	Name	Badge	Name	Badge
Moore, P.	360	Hedin, C.	554	Hanson, H. P.	748	Jacobs, A.	3890	Potts, J. D.	8290
Cronin, J. A.	508	O'Connor, H.	604	White, T.	754	Abrams, N. B.	4116	Fagan, J. E.	8414
Ure, J.	510	Duffy, C.	606	Swanson, L.	956	Conlon, P. J.	4522	Elverson, P.	9266
Noonan, J., No. 2	514	Kelleher, J.	616	Wulff, H. W.	1090	Van Buren, H.	4804	Olson, J.	10354
Downey, C.	516	Larson, O.	648	Murphy, W.	1304	Howard, T.	4872	Chamberlain, L.	10580
Greenan, T.	526	King, W.	698	O'Connell, J.	1918	Dalton, E.	5410	Nolan, T. E.	11994
Bell, G.	530	Henderson, W.	722	Young, G. M.	3188	Hitterman, G.	6434	Rickert, J. C.	12786
Carson, D., No. 1	538	Gouderjaan, J.	728	Ryan, P. J.	3192	Shine, R.	6536	Jensen, N. C.	13646
		Wangero, E.	738	Mather, F.	3442	Denash, M. E.	6922		

Motormen

Schuberth, N.	291	Danielson, F.	535	Boone, J.	815	Burgeson, A.	2839	Stegenga, J.	4245
Moppett, T. H.	507	Cochrane, J.	623	Connell, T.	881	Magram, J.	4145	Walsh, A.	12341
Duggan, M.	519	O'Connell, D.	749	Delea, J.	2711				

DIVISION No. 3—77th

ONE YEAR MEN

Conductors

Carlson, E. C.	244	Roche, F. M., No. 1	2436	O'Shea, W.	4154	Luplow, H. W.	8224	Spikings, D. J.	11884
Hildebrand, A. L.	1084	Johnson, B.	2440	Goebig, E. J.	4482	Judge, T. P.	9146	Hintz, R. T.	11918
Norum, E.	1166	Bucholz, J.	2508	Morrissey, T.	4488	Brown, J. M., No. 2	9184	Klasen, H. W. A.	11922
Cagney, T. J.	1256	Pierson, J. M.	2516	Collins, O.	4858	Patzin, S. L.	9246	Lawler, W. E., No. 1	12080
Schwappach, A. E.	1272	Blank, W.	2550	Johns, E. L.	4918	Schmidt, F. W.	9250	Ketterick, J. J.	12488
Walsh, A., No. 1	1342	Hirsch, A.	2606	Morris, O. J.	5210	Hanson, C. W.	9300	Dunne, J. J.	12630
Davenport, L. E.	1466	Powell, M.	2618	Haas, G. J.	5394	Thome, A. J.	9406	O'Connor, W. F.	12860
Jensen, H. M.	1498	Nuscombe, T. G.	2624	Gurney, J. E.	5438	Carey, C. A.	9438	Flynn, J. T., No. 1	12940
O'Malley, P. A.	1534	Luscon, G.	2642	O'Donnell, T.	6072	Donnellan, J. F.	9452	Ladder, A. B.	13020
Larkin, J.	1696	Bruchhauser, A.	2836	Gaskin, J. M.	6278	Airey, R.	10278	Davis, E. A.	13056
Maibuecher, E. G.	1762	Collins, P. F.	2856	Waters, P.	6478	Gill, W. F.	10416	Johnson, W. C.	13084
Brown, T. P.	1772	Bottecher, A. H. M.	2998	Black, R. V.	6572	Boddeker, M. C.	10542	Feykes, W. A.	13256
Campbell, O. O.	1816	Conway, M., No. 1	3086	Carpenter, E. D., No. 2	6764	McNamara, R. C.	10644	O'Connor, J. F., No. 1	13286
Platt, C.	1888	Austin, C. H.	3204	Klein, J.	6864	O'Shaughnessey, J. W.	10800	Hough, T.	13362
Mitchell, V. A.	1910	Dubig, M., No. 2	3404	Nelson, W. A.	7006	Flynn, J. P., No. 2	10840	Wells, R. C.	13390
Leach, H. W.	2048	Langenberg, W. G.	3478	Howard, E. J.	7098	Becic, G.	10866	Mazurkiewicz, L. R.	13594
Seaberg, H.	2182	Walsh, J. T., No. 3	3818	Bowler, J. F.	7328	Miectic, M. P.	10996	O'Dea, E. J.	11824
Kazda, F. I.	2386	Cunsolus, F. W.	3904	Garrity, P. J.	7422	Todd, B. E.	11662	Meegan, J. W.	11878
Duncker, W. J.	2400	Marousek, J.	3916	Vandenbergh, W. F.	7804	O'Dea, E. J.	11824		
Groundwater, J. C.	2402			Stegerman, J. C.	7848	Christopher, J. R.	7940		
				Sheehy, P.	7948		7948		

Motormen

Johnson, R. H.	211	Gartland, P.	3381	Trinen, W. J.	5219	Hoeller, T. C.	10005	McGowan, M.	12107
Paul, J. T.	475	Barbour, L.	3387	Borg, G. A.	5559	Inthout, B.	10047	Brown, T.	12217
O'Reilly, M. J.	807	Creen, V. J.	3391	Kraft, J. A.	5945	Gillooley, F. W.	10175	Pierson, M. E.	12249
Mellin, A. S.	863	Seecon, T. F.	3423	Hickey, W.	6083	Wallace, H. W.	10327	Schrier, F. P.	12611
Madigan, J.	951	O'Connor, M. C., No. 2	3747	Hughes, T. J., No. 1	6307	Sarther, M.	10553	Ryan, M. J.	12619
Cattar, E.	1331	Lofstrom, M. F.	3799	Albrecht, H. A.	6733	Kawalec, S.	10689	McKeighan, H. A.	12639
De Heer, H.	1791	Millerick, J. J.	3905	Hecht, H.	7311	Murphy, P.	10711	Connolly, T. J.	12737
Roney, J. D.	1903	Corbett, D.	3985	Hurley, D. R.	7399	Lindemann, C. H.	11335	Tjelle, O.	12851
Aye, A.	1915	Fitzsimmons, C. S.	4149	Phillips, F.	7459	Loftus, J. R.	11369	Matthesen, C. H.	12857
Johnson, N. C.	2057	Jonas, B. C.	4179	Engwall, R. H.	7833	Carlson, J. M.	11457	Carroll, W. J., No. 2	13081
Schultz, F. W., No. 1	2095	Johnson, F. H.	4215	Kuelbs, A. H.	8439	Fox, W. H.	11557	Smith, I. W.	13279
Tovey, S.	2149	McMahon, J. F.	4225	Doherty, M.	8895	Byrne, W. J.	11605	Joy, E.	13397
Fay, J.	2317	Reedy, J.	4501	McLaughlin, J., No. 2	9315	Luzovec, J. L.	11673	Polson, J. G.	13483
Cahill, J.	2403	Kerrigan, P.	4517	Hoff, H. W.	9481	Corcoran, M. J., No. 2	11703	Harms, O. G.	13615
Madigan, W.	2507	Hayden, A. C.	4565	Markland, A. H.	9989	Brown, G.	11949		
Helms, F. W.	2687	Reinke, E. F.	4757						
Kline, D. A.	2737								

Bus Operators

Grunst, E. C.	1752	Kerhart, F. D.	2702	Cramsie, C. W.	11240	Nicholson, T. L.	14282	Piotrowski, J. E.	13588
Ericson, E. W., No. 1	1974	Sandin, A. S.	6778	Walsh, W.	12330	Cahill, P. J.	10313		
		Rodden, T. H.	10980	McDowell, J. C.	14100				

TWO YEAR MEN

Conductors

Richter, A. O.	378	Anderson, A. T., No. 3.	1972	Holloway, B. M.	3976	Carpenter, E., No. 1	8696	Bassett, C. T.	11104
Calhoun, C. N.	488	Merrero, W. T.	2020	Morrison, H.	4134	Burns, E. G.	8844	Schofield, H. J.	11278
Rehburg, E.	654	Burrett, A. W.	2064	O'Connell, M. J.	4724	Anderson, W. M.	8928	Murphy, D. A., No. 2	11790
McMahon, P. J.	968	Baker, C. J., No. 2	2110	Winter, J. D.	5022	Sommers, S. B.	10118	Pitcher, H. J.	12530
Olson, A. E.	1356	Teger, C. A.	2222	Ericksen, H. V.	5260	Bourke, M.	10204	Dixon, M. K.	12728
Mulcahy, E.	1362	Collins, M. G.	2290	O'Reilly, C.	5264	Cavanaugh, E. J.	10230	Curry, J.	12840
Giesch, A. E.	1376	O'Sullivan, J.	2446	Oschatz, P. B.	5518	Friberg, E. M.	10554	Blehatka, E.	12918
Zellner, F.	1404	Holm, S. O.	2578	Adams, R. H.	5528	Johnson, E. F.	10590	O'Keefe, D.	13000
Loschetter, A. J.	1406	Hogan, J., No. 3	3388	Long, J. H.	5816	McRoberts, W.	10596	Hajek, J. G.	13462
Greig, J. M.	1560	Bystrom, O.	3722	Moran, K.	5930	Keating, J. G., No. 4	10660	Leitch, R.	13498
Reynolds, P.	1724	Graper, G. J.	3918	Roth, H.	6122	Voltmer, H. J.	10904	Ose, W. A.	13824
Lynk, E. J.	1766			McArdle, J.	7106			Flatley, J. E.	14028
Barrar, L. E.	1896			Farrell, J. F.	8250			Kreuz, F. A.	14196
Laurson, C.	1962			Lundquist, E. A.	8508			Taylor, G. R.	14236
				Ringberg, E. E.	8518				

Motormen

Name	Badge	Name	Badge	Name	Badge	Name	Badge
Garrity, J. J.	557	Roth, H.	2021	Nelson, C.		Bernhardt,	
Darcy, P.	793	Loomis, R.	2081	No. 1.	2469	V. J.	5701
Eckert, R. C.	1301	O'Connor, J. A.	2445	Stefek, J.	2527	McCann, T. H.	6507
Beauvais, H. L.	1989					Worts, B. P.	11363
						McLaughlin, T.	11385
						Teeling, T. L.	12761

Bus Operators

Smith, W. J. 12995

SEVEN YEAR MEN

Conductors

Weisseg, W. B.	910	Wassner, W.	3130	Moran, E. P.	4280	Black, W. L.	8724	Campaigne,	
Dessecker, C. R.	1614	Allen, J. K.		Dorgan, W. H.	4834	Blais, J. B.	9118	F. G.	12072
Lake, W.	1718	No. 1.	3150	Frank, G. F.	5650	Baxa, E.	9386	Henry, E. J.	12226
Orton, F. W.	1934	Carroll, M. J.	3174	Berningham,		Landeck, C. L.	9430	Hannon, J. A.	13140
Holloway, C. F.	1950	Quinlan, E. T.	3200	J. J., No. 2.	7278	Ryan, J. W.,		Evers, R. A.	13682
Geiger, F. J.	2288	Ayers, M. W.	2694	Edwards, N. J.	7744	No. 1.	9690	Sullivan, D. T.,	
Oaity, J. J.	2746	Piatt, A. L.	3638	Kersten, E.	7766	Knapp, E. E.	10698	No. 1.	13686
Haggert, J. J.	3042	McCann, P.,		Quinn, T. B.,		Heller, R. A.	11250	Smith, E.,	
Smith, V.	3104	No. 1.	4242	No. 1.	8234			No. 2.	14020
								Braun, A. O.	14026

Motormen

Lundquist,		Olson, O.,		Sanders, J. J.	2481	Connor, B. J.	5357	Morrison, M.	12005
A. W.	1333	No. 1.	1935	Claussen, J. H.	3331	Landeck, K. L.	7679	Doyle, J. E.	12829
Castreich, E.	1475	Doody, P.	2187	Guerin, P.	3975	Statzle, J. E.	9083	Concannon, W.	13415
Vonderheide, G.	1705								

EIGHT YEAR MEN

Conductors

Kleutgen, C. F.	320	Burnett, H.	1618	Higgins, J.,		Brady, J. F.	7742	Norris, J. J.	10632
Birmingham,		Pulaski, G.	1836	No. 1.	3908	Olson, V. E.	7926	Wilson, R.	10890
J. E., No. 1.	550	Paradies, J.	1956	Kielty, M. B.	4686	Clark, P. J.	8148	Lattimore, C. J.	11042
Walsh, J.,		McConville, W.	2490	Lafferty, M.	5106	Mahon, J. J.	8816	Trafton, J. J.	11348
No. 2.	826	Ayers, M. W.	2694	Roh, J.	5374	Haaker, E. L.	8932	O'Donnell, H.	11942
Belanger, V. H.	950	Meyer, H. E.	2728	Linderborg, G.	5782	Murphy, M.	9212	Quinn, M. J.,	
McNugent, P.	1344	Conway, M.,		Mahoney, J. J.,		Klix, C. H.	10200	No. 2.	12076
Kruse, H.	1444	No. 1.	3086	No. 2.	5910	O'Brien, C. C.	10228	Blackall, M. J.	13014
McHugh, R. J.	1482	Quigg, W.	3622	Ninnemann, G.	6226	Hincheliff,		Mills, J. C.	13132
Geory, P. J.	1582	Donald, J. L.	3876	Duncan, R.	6748	W. E.	10256	Calzaretta, R.	13514
Gardon, W. J.	1616	Kampf, M.	3888	Knoerr, C. G.	7650	Zapf, F. P.	10564		

Motormen

Harrop, G.	673	Anderson, J.,		Hannon, J.	2569	Hambrick, E. H.	6415	Schmidt, W. C.	11623
Larmon, C. J.	1395	No. 1.	2035	Krickow, F. J.	4289	Johnston, M.	9231	Leake, W. A.	11697
Kochler, H.	1923	Skoglund, A.	2551	Scally, M.	4461	Gannon, P. J.	10931	Gynn, T.	12387

Bus Operators

Shanley, M. J. 1004

NINE YEAR MEN

Conductors

Buckley, R. E.	422	Ryan, M. J.	1980	Bushé, C. K.	3310	Reiss, R.	9152	Lawler, W. E.,	
Watson, G. J.	814	Ellerbeck, R. P.	1986	Cuchna, J. S.	3402	Urquhart, D. H.	9368	No. 2.	11290
Cunneon, P. A.	1138	Hacker, L. J.	2076	Benton, P.	3494	Tierney, M. H.	9880	Matern, J. F.	11328
Anderson, E. C.	1148	Riel, W. T.	2190	Naumann, O. L.	4302	Kotz, J. A.	10076	Campbell, V. G.	11668
Kamin, C. W.	1158	Roessler, F. H.	2344	Hegburg, C. G.	4354	Purtell, T. E.	10244	Latala, F. M.	11706
Richardson, T.	1266	Halloran, J. J.	2356	Smyth, J. J.,		Balling, W.	10078	Wacholz, A. F.	12116
Gaskin, G.	1286	Steelman, C. F.	2388	No. 1.	4492	Bedore, E. G.	10266	Simpson, A.	12128
Blum, F. E.	1392	Nehts, E. J.	2458	Barkley, J.	4952	Miller, B. D.	10448	Centner, J. L.	12182
Britton, J. J.	1450	Donahue, J. E.,		Gunther, W. H.	5094	Reilly, M. J.	10460	Cassey, W. J.	12348
Rauen, J. G.	1468	No. 1.	2492	Schultz, H. E.	6204	Whalen, A. P.	10534	Wood, W. K.	12552
Larson, F. E.	1486	Barber, J.	2502	Luebeck, A. O.	6264	Browne, J. J.	10654	Glenday, H. J.	12836
Day, E. W.	1512	Airey, G. J.	2546	McNichols, E.	6302	Donahue, J. J.,		Lanigan, J.	12878
Powers, G. A.	1586	Hodapp, L. C.	2560	McHugh, M.	6370	No. 2.	10796	Sullivan, J. D.,	
Walter, W. H.	1624	Watne, C. J.	2806	Pold, C. J.	6622	Hideen, E.	10842	No. 1.	12968
Simpson, J. P.	1688	Loeser, F. J.	2830	Grogan, E. J.	7054	Burke, P. J.	11098	Moore, A.	13068
Hankins, E. H.	1784	Leonard, P.	2838	Blakley, J. D.	7532	Gernenz, W. C.	11214	Crowley, C. F.	13280
Byfield, W.	1848	Fitzgerald,		Simmons, E. M.	8664	Byrne, P. J.,		McGoldrick, J.	13318
Mosbarger,		G. H.	3100	McIver, F. J.	8838	No. 2.	11270	Mischnick, C. J.	14546
E. E.	1920	Grassel, G. H.	3214						

Motormen

Hanley, H. J.	443	Meyer, T. W.	2033	Maguire, J.,		Mulerone, E.	3827	Keeler, C. F.	9273
Mielke, O.	1507	Hatch, O. A.	2165	No. 1.	2349	Jiffers, M.	3867	Keebler, R. F.	10105
Loebart, E. C.	1743	Wilson, R. P.,		Thomson, I. W.	2643	O'Malley, M.,		Jasper, H.	12859
Hale, J. J.,		No. 1.	2293	Seehausen, A.	3109	No. 1.	4421		
No. 1.	1921	Lester, A. J.	2321	Toolis, M.	3175				

DIVISION No. 4—69th

ONE YEAR MEN

Conductors

Name	Badge	Name	Badge	Name	Badge	Name	Badge
Mudra, J. H.	236	Schneider,		Schenold, H. J.	3662	Knight, G. H.	6720
Burke, M.	238	M. H.	2688	Sweeney, P. F.	3998	Klie, E. C.	7824
Ehrhardt, W.	694	Juric, N.	2776	Wagner, J. P.,		Nelson, G. W.,	
Donaldson, C.	1020	McAndrews,		No. 1.	4090	No. 2.	7960
O'Brien, M. T.	1156	A. J.	2850	Korasky, A. T.	4764	Kelly, J. J.,	
Decker, F. R.	1410	Leaf, N.	2852	Boren, H. H.	4970	No. 2.	8566
Cunnane, J.	1462	Kelly, R. P.	2860	Laird, E. R.	5088	Kelly, M. J.	8916
McMahon, P. J.	1544	Arnold, J.	2898	Pietsch, P. F.	5362	McCourt, J. H.	9168
Turner, T.	1658	Cermak, J.	2920	Mulvihill, M. V.	5488	Conley, W.	9304
Thompson,		King, T.,		Wilson, J. R.	5524	Barnes, J. J.	9570
W. H.	1846	No. 1.	2968	Tennison, H. J.	5580	King, T., No. 2.	9632
Gradt, H. C.	1860	Lomasney, J.	3052	Voelker, L. C.	6014	Ryan, P. J.	9794
Burke, D.	1926	Herold, F. J.	3250	Kurth, H. R.	6252	Duffy, E.	10774
Reese, A. F.	2290	Lyons, J. I.,		Sheehan, T.	6338	Tiess, E. J.	10968
Forster, F.	2488	No. 3.	3584	DeLorme, J. H.	6524	Lavin, M. J.	11472
Bodnicki, E.	2600	Keane, J. P.	3652				

Motormen

Adcock, J. N.	331	Cassidy, T.,		Jordan, J. H.,		Vandenover,	
Wiebenga, C.	545	No. 1.	2979	No. 1.	3831	J. J.	5861
Coyne, W. P.	1149	Hennessey, D.	2987	Devitt, J. J.	4117	Kellett, J. J.	6549
Summer, M. F.	1263	Peters, S. A.	3011	Burns, R. L.	4223	Eyers, M.	6751
O'Neill, P.	1519	O'Brien, J.,		Davitt, P. J.	4349	Lind, W. H.	6783
Clancy, G.	1643	No. 5.	3067	Henazek, J. J.	4473	Lamont, A.	6845
McGovern, T.	1830	Brice, M. F.	3121	Zachary, C.	5079	Becker, J. C.	6933
Quinn, W. J.	2039	Finnegan, J. J.	3153	Eifert, M. W.	5139	Rybacki, M. M.	7103
Cox, M. J.	2133	O'Brien, T.,		Kinnamond, D.	5149	Fahy, J.	7289
Evers, A. E.	2397	No. 1.	3211	Gillespie, C.	5633	Richter, W. H.	8113
Tams, J.	2423	McCorry, E.	3257	Kennerney,		Tagler, J. A.	8801
Schueler, W.	2489	Hennessey, M.,		P. J.	5665	Burns, C. G.	10139
Plattner, M.	2609	No. 1.	3427				

TWO YEAR MEN

Conductors

Rumsfeld, H. J.	344	James, H. E.	1992	Hochstadt, C.	3306	Geiter, J. J.	8516	Detloff, J. J.	10880
Holmes, T. P.	712	Olson, L. J.	2050	Quinn, J. P.	3996	Maloney, J. E.,		Donnelly D.	11080
Murphy, M.	894	Hyland, J.	2462	Dobson, W. H.	4342	No. 2.	8642	Woelfle, A. E.	11338
Reilly, T.,		Dewey, D. M.	2514	Buhring, A. W.	4998	Postulka, G. A.	8750	Rye, F. E.	11592
No. 1.	996	Hansen, H. P.	3072	David, L. F.	5274	Healy, F. D.	9010	Harkness, W.	12090
McInerney,		Park, A. F.	3074	Frank, A. A.	6332	Larkin, P. J.	9404	Elphick, T. J.	12392
M. E.	1052	Sommer, F.	3078	Ashe, T.	6494	Majher, J.	9550	Kazekowski,	
Luebeck, C. H.	1360	Zody, R. C.	3080	Carew, D. G.	6498	Costello, J.	9998	J. J.	12510
Stoldt, M. L.	1812	Hackbarth,		Stevens, E. J.	7486	Cornell, W. H.	10362	McCauley, D.	12884
Gradt, H. C.	1860	H. G.	3256	Kiener, F. A.	8274	Madden, T.	10828		

Motormen

Teufel, W. J.	347	Salensky, E.	1873	Ward, W. E.	3345	Zuckowski, S.	5929	Sturm, C. H.	8471
Doyle, M. J.	395	Domrese, L. A.	2749	Haus, W. E.	3547	Burke, J.,		Cotter, A. A.	9729
Fitman, J. J.	409	Schulien, N. H.	3111	Tully, P. J.	3819	No. 2.	6175	Sullivan, J. R.,	
Fitzgerald, P.	1171	McGovern, T.	3187	Jorgenson,		Shannon, S.	6277	No. 1.	10529
Graffy, A. J.	1199	Mackay, G. R.	3215	W. C.	3971	Kruse, H.	6391	Butkus, J. J.	10759
Bossi, H. J.	1223	Bonow, C. A.	3239	Gradt, C. E.	4127	Naughton, T. F.	6647	Quick, A. P.	11655
Newell, J.	1623	O'Rourke, T.,		Kelly, T.,		Neal, J. J.	6867	Henry, W. J.	11701
Schmidt, H. F.	1711	No. 2.	3243	No. 2.	4181	Callaghan, J. J.,		Smith, F. C.	13005
						No. 2.	7641	McNamara, T.	13425

THREE YEAR MEN

Conductors

Graham, J. L.	258	Wizeck, F.	1894	Maze, C. M.	3098	Eichten, H. J.	5832	Gillespie, C.	10772
Lynch, J.,		Flynn, P. J.	2144	Johnson, E. E.,		Miller, H. B.	6092	Morris, D. A.	11860
No. 2.	1246	Hansen, A. J.	2524	No. 1.	3226	Siefried, M. J.	7476	Priscal, E. J.	11870
Wetzel, H. A.	1296	Clark, J. W.	2854	Murphy, J. A.	3526	Sasek, A.	9202	Williams, C. H.	12756
Johnson, W. P.	1520	Gleason, W.	3026	Ryan, J. B.	4578	Malquist, R. A.	9372	Proteau, F. W.	14080
Devlin, J. J.	1778	Magnuson, E.	3056	Foertsch, C. J.	4948	McGuire, H. J.	10300		

Motormen

Quinlan, C.	199	Von Moers, K.	1629	Noonan, J.,		Oelschlegel, F.	8545	Lavin, J.	10125
McGuire, J. H.	209	McCarthy, I. J.	1751	No. 2.	3303	Doyle, J. F.	8569	Jordan, J.,	
Morley, J. J.	333	Weber, P. H.	2225	O'Connell, M.,		Jones, W. R.	8987	No. 3.	10425
Hoppingner,		Hederman, J.	2807	No. 2.	3379	McDonald,		Watt, R. W.	10463
F. A.	1373	McNicholas,		Conrad, W. C.	3995	L. H.	9033	Fitzsimmons,	
Driscoll, J. A.	1413	T. J.	2843	Quinn, J. J.	6251	Schmeicher,		J.	11663
Cheshire, A. M.	1481	Aubrey, G. L.	3015	Berry, J.	6569	H. J.	9659	Sullivan, T. D.	13229
Heinehan, T.	1513			Givin, A. M.	7769	Piala, J. E.	9899		

FOUR YEAR MEN

Conductors

Buckley, J.	652	Toale, O.	3138	Grant, C. R.	5830	Johnson, A. V.	10144	Bruin, J. J.	12350
Brichta, L.	1478	McKeon, F. G.	3534	Shanley, F.	7272	Mahoney, P.	10546	Fournier, W. J.	12370
Ditsch, J. M.	2588	Funk, H. F.	3858	Granam, C. C.	7442	Hogan, M. J.	10902	Link, J. J.	12842
Plattner, F. P.	3036	Dodd, M. A.	4814	Segars, L. E.	7612	McGuire, J. E.	11460	Raebig, F. C.	13444
Schmidt, F. J.	3112	Brueck, F. C.	5734	Glesa, T. J.	7956	Alm, E. C.	11928	Lyons, R.	14288
				Naughton, J. P.	9906				

Name	Badge	Name	Badge	Name	Badge	Name	Badge
Murray, J.	491	Erickson, C.	3041	Graves, H. S.	3603	Lenihan, S. P.	6117
Benson, A.	1087	Thomas, P. F.	3103	Brennan, T.	4193	O'Connor, D.	9147
Moriarity, E. J.	1121	Ostermeyer,		Lucid, F.	4287	Becker, F. C.	10489
Claussen, C. J.	1647	S. F.	3481			Daoust, O. J.	11029
						Stama, J. A.	13205
						Person, A. G.	13477

FIVE YEAR MEN

Conductors			
Nachalz, F. J.	570	Cunningham,	
Hallinan, F. W.	1308	J. J.	3210
Barnum, F. C.	2360	Abderhelden, E.	4320
Warren, F. F.	2456	Jones, B. B.	4490
		Deuser, A.	5896
		Dawson, T. J.	6504
		Gibbons, R.	6696
		Ricker, B. F.	7276
		Domke, M.	7526
		Schmidt, H.,	
		No. 1.	7598
		Grabianocki, F.	10006
		Baer, P. J.	11958
		Conwell, J. E.	12706

Motormen

Holm, H. L.	3241	Tollar, F. C.	3999
		Carney, J. J.,	
		No. 2.	5411

SIX YEAR MEN

Conductors			
Reed, H. E.	1078	Burzlauff, W. C.	3614
Reese, A. F.	2200	Louscin, H. B.	3956
Hester, P. J.,		Clough, S. H.	4750
No. 2.	2808	Virges, F. P.	4906
Murray, L.	3604	Allen, E. L.	5516
		Nash, F. A.	6408
		Phillips, E. E.	7876
		Jackson, W. J.,	
		No. 3.	7922
		Byrne, T.	8440
		Castka, F.	8744
		Gehl, J. B.	8748
		Hueston, T.	9628
		Cashin, T. J.	9806
		Leaverton,	
		A. L.	10516
		Stuart, W. B.	10716
		Doran, T. J.	11582
		Hyncik, J.	11742
		Barry, M.	11988
		Callaghan, T. J.	12282
		Halper, L. J.	241
		Boyle, M.	2117
		Boyer, J. F.	4357
		Edmonson,	
		C. B.	7097
		Duffy, R.	7639
		Kasper, W. A.	10795
		Branigan, D. P.	11899
		McCarthy, J. P.,	
		No. 2.	13381

SEVEN YEAR MEN

Conductors			
Flaws, J. M.	952	Conway, E. J.	2478
Stewart, D. J.	2254	Berg, A. W.	2602
Swanson, C. W.	2278	Hammond, O. E.	2906
Borchardt, C.	2394	Shaddon, J. J.	3734
		Wilkie, F. H.	5072
		Pfrommer, J. J.	5562
		Reed, A. I.	6410
		Barkley, C. M.	6702
		O'Neill, P.	8110
		Kepler, F. P.	8914
		Clancy, H. T.	9148
		McMahon, J. J.	9412
		Booth, R.	10556
		Brennan, J. J.	11190
		Kolb, J. H.	12086
		Needham, M. J.	12390
		Lynn, W.	613
		Maza, M. C.	2409
		Clear, D.	3353
		McDonagh, P.	3599
		Holmes, S. E.	3671
		Fahey, J.	7285
		Wagner, P. A.	8075
		Murphy, P.	8319
		Scanlon, C. P.	10161
		Short, B.	10383
		Anders, O. H.	10785
		Regan, F. T.	11023
		Bell, T., No. 2.	12015

EIGHT YEAR MEN

Conductors			
McClelland, J.	260	Sandquist, J. H.	2590
Grady, J. C.	1464	Bailey, F. J.	2862
Kill, F. A.	1602	Locke, M. J.	3116
Owens, J. E.	1898	Trafkan, J.	3292
Woltman, W.	2258	Senkpiel, G.	3348
Liston, J. J.	2276	Leonard, C. J.	3508
Durchanek, J. J.	2348	Miller, F.	3680
		Olson, O. C.,	
		No. 1.	3838
		Gill, O. F.	3940
		Murray, J. W.	4566
		Hillgoth, G. J.	4848
		Harrigan, P.	4920
		Kehoe, J. T.	5884
		Willer, O. H.	5924
		Porter, W. H.	6016
		Lux, F. E.	6094
		O'Shea, T. J.	8124
		Nolan, M.	10002
		Roche, T. P.	10154
		Ravane, M. T.	10674
		Cerney, P. J.	11008
		Greene, J.	11990
		McLindon,	
		B. C.	12456
		Reidy, S. J.	13372
		Jurgenson, H.	225
		Trede, C.	2337
		Erlhoff, J.	3087
		Volk, J. G.	3181
		Roche, D.	3883
		Radke, D. E.	1883
		McCourty, T.	2723

NINE YEAR MEN

Conductors			
Maloney, J. J.	256	Burgeson, C. E.	1838
Butler, W. J.	462	Sheridan, J. E.	2006
Pearson, W. F.	484	Bossi, J. H.	2022
Davis, O.	552	Kirby, J. J.,	
Crowley, C. E.	966	No. 2.	2620
Dulfer, A. P.	1164	Scherer, F.	2670
O'Reilly, F. P.	1204	O'Brien, T.,	
Nelson, G. W.,		No. 1.	3004
No. 1.	1206	Eriksen, E.	3194
McGoldrick, J.	1254	Calp, R. A.	3196
McDonald, H. J.	1276	Foley, T. F.	3202
King, P. J.	1522	Hayes, M. J.	3228
Burke, J. J.,		Burke, J. V.,	
No. 2.	1662	No. 1.	3252
		Brucker, H.	3274
		Frank, L.	3320
		Bergman, W.	3344
		Reis, L. J.	3372
		Wurster, C. G.	3406
		Benning, F. J.	3486
		Saenger, F. W.	3932
		Lowe, E.	3982
		McAllister, J. J.	4074
		Dybiez, T. A.	4152
		Turek, C. F.	5624
		Monohan, J.	5978
		Feeley, T. J.	6050
		Walsh, M. W.	6222
		Honings, J. D.	6428
		Schmitz, A. F.	7064
		Unrath, G.	7456
		Pecht, O. F.	8324
		Pavletic,	
		J. M.	8346
		Belskis, V.	8392
		O'Connor, P.	9756
		Manena, J. F.	9798
		Coughlin, J.	10120
		Burke, J., No.	
		4.	10136
		Sanderson,	
		T. P.	10206
		Keane, J. E.	10302
		Egan, A.	10792
		Brownley,	
		W. G.	11012
		McDonald, M.	11034
		Mackie, R. F.	13684
		Doubek, J. F.	13710
		Durkin, J. J.,	
		No. 1.	14144
		Martín, J. H.	3163
		Ryan, C. G.	3209
		O'Dwyer, J.	3393
		O'Donnell, J. E.	3877
		Hardin, J. J.	8221
		Ryan, J., No. 6	9601
		O'Connor, P. F.	10561

Motormen

DIVISION No. 5—ARCHER

ONE YEAR MEN

Conductors

Name	Badge	Name	Badge	Name	Badge	Name	Badge	Name	Badge
McMillen, W. F.	170	Kubiak, W. B.	2056	McCarthy, F.	3472	Troike, C. A.	8500	Daley, L. E.	10608
Forkin, T. J.	248	Krichmus, A.	2264	Fitzpatrick, H.	3514	Smith, A. L.	8648	Johnson, J. W.	10862
Prendergast,		Hurt, A.	2274	Murray, Alex.	3524	Connolly, P.	9206	McCarthy, E. C.	10974
L. M.	458	Roszbach, J. A.	2296	Rybar, J.	3650	Corrison, D.	9258	Nagle, P.	11038
Bell, S.	602	Hoyt, C. L.	2338	Fandorf, W. C.	3758	Kenny, T. T.	9466	Sisler, C.	11082
Heinreich, S. J.	818	Gahan, B. L.	2354	Corcoran, T. M.	4168	Krueger, A. F.	9728	Murphy, E. T.	11116
Plikuhn, Ed.	848	Cullen, R. V.	2684	McDonald, R. F.	4472	Polen, J. V.	9808	McNicholas,	
August, F. S.	972	Walsh, T. M.	2714	Vaughan, F. M.	4784	Kleim, C. G.	9866	W. F.	11284
Walsh, N. M.	1044	Clancy, P. J.	2724	Sherck, A. P.	4876	Albinski, J. A.	10004	Simms, W. C.	12016
Churylo, S. M.	1212	Fedderson,		McWilliam,		Fakan, J.	10074	Krug, J.	12562
Haak, H. A.	1292	H. C.	2754	E. J.	5606	Dunne, P. J.	10184	Coyle, W. W.	12598
Finn, J.	1442	Casey, P. T.	3284	Rackey, J. F.	5826	Whitman, P. B.	10214	Gaines, E. H.	12704
Wachowski,		Famer, J.	3296	Martin, T. J.	6730	Holding, R. W.	10282	Kwiatkowski, Z.	12988
F. J.	1672	Wareham, R.	3386	Clair, R. M.	7618	Bennett, J. H.	10304	Piontkowski,	
DeLacey, T. L.	1764	Phelan, M. J.	3392	Zelis, W. A.	7632	Burger, W. A.	10330	E. C.	13188
Annweiler,		Copithorne,		Lumley, W.	7666	Stevens, E. E.	10528	Weiss, L. A.	13312
T. H.	1914	J. D.	3460	Kopping, F. A.	7874	King, J. J.	10550	Buchanan, T. J.	13810
Enright, D.	1922								

Motormen

Buckwell, I.	687	Fisher, P.	2429	Meyers, J. J.	3049	Johnston, P. G.	6491	Frejlach, M. J.	11595
Brien, J. E.	913	McMahon, Thos.	2509	Spear, W. H.	3193	Hynes, Thos.	6827	Krydvynski,	
Regneir, W.	1291	Dickman, J.	2513	Blaha, Geo.	3311	Aldworth, J. H.	7739	S. B.	11691
Ahmer, O. A.	1533	Goles, John	2621	Beckett, J.	3569	Doran, J. No. 1	7895	Prucha, C. G.	11795
Burns, M., No.		Walker, M. L.	2659	Vogel, J. J.	3649	Malewski, J. L.	7957	Manziowski,	
2	1635	Basblier,		Bronseil, J.	3697	Prell, R. W.	8341	B. F.	12553
Enright, P. J.	1645	R. H.	2667	O'Rourke, T. J.	3873	Jacobson, J. E.	8599	Sequence, J. J.	12807
Passmore, R.	2007	O'Donnell,		Houser, D. D.	3969	Lapham, Geo.	8787	Mollsen, E. C.	13109
Causeman, J.	2131	T. F.	2669	White, H.	4017	Gahan, B. L.	9157	Donoghue, P.	13141
Hansen, W. F.,		O'Connell, J.,		Springer, C. E.	4125	Kennelly,		Vacek, A.	13173
No. 1	2237	No. 3	2675	Hayes, F. G.	5845	E. A.	9697	Pett, A. C.	13215
Schneider, F.	2361	Reif, F. H.	2783	Maloney, M.	6059	Pfeiffer, A. A.	10767	O'Connor, John	13443
Falsburt, Geo.	2399	Wagner, L.	2925	Roubik, C. J.	6435	Giblin, H. V.	10909		

TWO YEAR MEN

Conductors

Simon, John	536	Shepherd, A. E.	2706	Maloney, T. E.	5312	Kondelik, F.	10560	Vogel, O.	12352
Gauzeas, W. G.	700	Tighe, Jas.	2842	McCarthy, J. E.	6938	Pfrommer, G. J.	10650	Wedel, J. W.	12448
Becker, H. J.,		Reck, M. J.	3142	Hannigan, T. A.	7122	Mealer, C. O.	10676	Granzow, W. L.	12762
No. 1	812	Kleidon, John	3458	Andrews, V. J.	7188	Sheehy, B. A.	11058	Bolt, E. L.	12806
Stark, H. V.	1232	Egan, John	3502	Cotter, C.	7514	Goltz, G. W.	11200	Smith, W. G.	13164
Doody, A.	1252	Rau, J. H.	3656	Kocher, J.	8198	Lang, Geo.	11276	Stegmeyer, C. J.	13184
Mattas, C. J.	1358	Billings, G.	3730	Simons, P. J.	8882	Kosnauski,		Dougherty,	
Vralsted, L.	1448	Hefferan, Ed.	3746	Vahl, H. A.	9358	A. J.	11304	J. D.	13326
Fisher, J.	2130	Robinson, P. J.	4132	Kennedy, P. J.	9758	Grindler, G. S.	11574	Hetenyak, J. A.	13466
Martin, J. F.,		Zwirn, H. F.	4148	Sheil, J. J.,		Gerig, Geo.	11618	Nadziezko, A.	14002
No. 1	2132	Smowton, A.	4550	No. 1	10128	Kamen, W. B.	11780	Lindemann,	
Burger, F. E.	2372	Tock, W. R.	4702	Rackow, E.	10384	Uhlir, J. F.	11816	W. C.	14152
O'Neill, J. F.	2548	Heene, A. A.	5310						

Motormen

Grant, James	1303	Fleming, P. J.,		Lyman, R. O.	4413	Connelly, J. T.	9129	Wilham, A. J.	10889
Quinlivan, Jas.	2553	No. 1	3493	Savage, W. T.	4851	McDonough,		Macejek, W. J.	10949
Walsh, M.	2719	Daly, J. D.	3559	Schrock, C. W.	6151	S. T.	9559	Chiz, C.	11527
Curran, P. J.	2721	Murphy, J. J.	3561	Maloney, J.,		Goodrich,		Dresden, F.	11573
Green, Jas. J.	2837	Bulow, H.	3667	No. 2	6243	M. R.	9811	Goetz, O.	12083
Grohn, A. F.	2853	Rybacki, A.	3675	Gustafson, A. C.	7277	Black, G. R.	9879	Doody, E. J.	12827
Heise, W. H.	2929	Pritchard, Thos.	3781	Klanssen, F. C.	8533	McGlynn, John	10325	Gauar, F. A.	12881
Lindemann,		Kopping, F. P.	3983	Ziolkowski,		Bandusky, W.	10603		
H. F.	3457	Walsh, Jas. M.	3987	B. V.	8609				

THREE YEAR MEN

Conductors

Grubbe, O.	1058	Ealey, E. J.	3268	Beisel, A. P.	4262	Hanrahan, A. J.	8392	Kubas, A.	10010
Yeoman, B. B.	1452	Fitzsimmons,		Jones, W. H.	4586	Zaynor, F. E.	8474	Goltz, E. R.	12098
Turgeon, E.	1720	J. E.	3422	Gravell, R. L.	5630	Grady, J.	9226	Nash, J. T.	12458
Rogers, M. J.	2980	Heller, C. E.	3672	McConville, J.	6902	Kopton, S. A.	9640	Frank, F. H.	12662
McNicholas,		Spraul, W. P.	3726	Drozdz, Geo.	7032	Lewandowski,		Weber, C. E.	14064
P. J.	3106	Jennings, M. J.	3884	Dewick, C. B.	8328	M.	9910	Berls, F. J.	14474

Motormen

Osterberg, O. A.	1691	Shattuck, M. R.	3499	Huski, John	8995	McLaughlin,		Pechek, J. W.	10821
Krause, A. J.	1835	Vasel, P. K.	3513	Hanlon, James	9399	Thos.	10349	Ouinett, S. J.	13111
Fleming, G. J.	2845	McCarthy, J. J.,		Hughes, Thos.	10235	Bourke, A. J.	10651	Boyle, J. J.	13151
Miller, H.	2857	No. 2	3863						

FOUR YEAR MEN

Conductors

Tallent, Fred	1346	McVay, J. E.	2622	Bragiel, J. E.	4398	Aird, A. J.	8430	Lynch, M.	13204
Melka, J.	2594	Ruler, R. L.	3012	Hardek, A.	4624	Laska, C.	9392		

Motormen

Name	Badge	Name	Badge	Name	Badge	Name	Badge
O'Donnell, J. P.	429	Schurwanz,		Klopke, Geo.	3665	Thatcher, Fred.	8723
Wenk, C. H.	2581	Chas.	2641	Kearney, Wm.	3821	Ulmer, A. A.	11117
		Gleason, John	2899	Longhauser, A.	4291	Kenny, T.	12129
						Miotke, J.	12293
						Knowski, A. J.	12485
						Klima, J. W.	13213

FIVE YEAR MEN

Conductors

Tanke, W. J.	1412	Beery, T. S.	2758	Rudolph, E. W.	3532	Lasky, P. J.	7688	Lewis, J. R.	10764
Prestine, H. C.	1524	Broughton,		Felsch, Geo.	4088	Schott, L.	8854	Loftus, J. E.	11368
Matthes, C. A.	1698	W S.	3480	Fischer, W. C.	4402				

Motormen

Wood, C. L.	467	Zimmerman,		Nagle, P.	3453	Monaghan, M.	5899	Belcik, H. J.	11405
Weyhmuller, C.	1683	Geo.	2817	Siebenaler, J.	5759	Miller, B.	7057		

SIX YEAR MEN

Conductors

Coughlin, T. J.,		Stahl, J. R.	2142	Fick, J. R.	3648	Scanlon, P. J.	6544	Baker, A. J.	11350
No. 1.	1576	Johnson, F. S.	2244	Dowment, C.	5308	Daley, F. F.	7420	Wivimis, J. J.	14520
Thomas, D. J.	1982	Vlk, J. J.	2870	Worker, D. L.	5430	Baggech, Geo.	9712		

Motormen

Brown, E. L.	1025	Kostanick, A.	2003	McGarry, H.	3179	Hagmann, J. A.	3721	Freitag, A. F.	8709
Wolff, Rd.	1595	Flood, T. J.	2795	Heavey, J.	3301				

SEVEN YEAR MEN

Conductors

Maslowski, L. F.	954	Murray, J. J.,		Lang, F. E.	7304	Mucynski,		Tichy, E.	11392
Drankie, A.	1050	No. 1.	3626	Chesla, L.	7554	F T.	10342	Kusek, P. M.	11616
Sagatz, A.	1222	Grannon, R. J.	5052	Bremer, Fred.	8808	Farrell, W., No.		Slattery, E. F.	11734
Otto, A. W.	2148	Brinker, H. L.	5576	Rogers, T. J.	9634	I	11052	Maher, W. T.	11822
Ryder, J. P.	2566	Kapcia, I. J.	6134	Oakes, G. A.	10048	McConnell,		Ott, R. F.	14058
Mooney, J. P.	3574	Gallagher, A. F.	6192	Neylon, M. F.	10308	C. A.	11176		

Motormen

Fernett, V. J.	1391	Forman, O. M.	2981	Pelton, S. J.	4619	Kauk, Val.	10647	Walsh, Thos.	11221
Hollback, A. C.	2333	Schulz, C. A.	3579	Krueger, A. T.,		Naughton, J. J.	10729	Deinert, Ed.	11937
Foley, J.	2863	Wensloff, P.	3693	No. 2.	7079	Krause, C. A.	11205	Jonaitis, S. A.	12529
Buckley, D.	2915	Blair, J. W.	3785	Sauerzopf, J.	7333				

EIGHT YEAR MEN

Conductors

Wilson, S. E.	290	Griffin, R. S.	3812	Burke, T., No. 3	7224	Halloran, J. A.	10802	Bielski, F. S.	11772
Cockle, Geo.	2482	English, J.	4222	Klikunas, J. G.	7494	Bennis, J. P.	11126	Simon, A.	11792
Conroy, D.	2736	Campbell, P.	4622	Zimbrich, F. C.	8254	Coughlin, T. J.,		Kent, J. F.	11808
Mulrooney, L.	3702	Murphy, J. J.,		Heedt, F. W.	10548	No. 2.	11544	Vones, J. J.	11812
Larson, Fred.	3792	No. 2.	4914						

Motormen

Block, J. F.	4219	Kelly, J., No. 2	4663	Lawick, B. M.	5953	Yenchu, J.	9611	O'Gara, T. F.	10323
--------------	------	------------------	------	---------------	------	------------	------	---------------	-------

NINE YEAR MEN

Conductors

LaBarge, A. J.,		Flanders, Ed.	2530	Masterson, J. H.	3510	Fahey, W. J.	5240	Arundel, W.	8450
No. 2.	524	Burian, Ed.	2552	Schultz, H. G.	3518	Kuhn, H. D.	5442	Filiatreau, L.	9408
Hacker, O.	578	Daugh, W. C.	2574	Copithorn,		Foley, M. E.	5752	Javorskin, Thos.	9444
Kahrar, C. F.	998	Lannon, J. W.	2636	W. H.	3528	Walsh, F., No.		Green, T. J.	9554
Wasenberg, P.	1098	Powers, Jas. M.	2742	Innes, Alex.	3544	I	5940	Prentice, J.	9812
Fedgen, J. A.	1328	Scanlon, R. J.	2784	Taylor, S. J.	3556	Peck, E.	6276	Kreith, G. J.	10026
Potraz, A. C.	1454	Conway, F. J.	2804	Lynch, Ed.	3564	Sauer, A. H.	6488	Falsey, J. P.	10618
Swiontkowski,		Schmook, C.,		Conway, M. J.	3724	Powers, C. J.	6736	Strunk, F.	10702
J.	1480	No. 1.	2904	Renken, H.	3910	Barth, W. T.	6762	Kostka, H. F.	11540
Walsh, Jas. M.	1484	English, E. W.	2964	Gutknecht, H.	3950	Bessette, A. L.	7042	Murray, J. V.	11892
Grubner, W.	1652	Fick, H.	3060	Fennesty, J. D.	4076	Calhoun, Geo.	7498	Fox, F., No. 2.	12196
Fleming, W. J.	1968	Block, F. L.	3224	Isaacson, J. S.	4338	Meckler, P. H.	8216	Gallagher, J. J.	13030
Hanner, T. H.	2114	Burandt, P. G.	3326	Connors, M.	4370	Murray, F. E.	8360	Pence, E.	13718
Blake, J. A.	2188	Neitzel, H.	3454	Fanlon, Jas.	4792	Klinger, G. J.	8406		

Motormen

Biggis, M. S.	2135	Romkoske, F.	3729	Flynn, F.	9101	Stuewe, O. A.	10159	Petrosius,	
Hruby, Dan.	2649	Kopping, W. H.	4093			F. A.	10967		

DIVISION No. 6—LAWNDALE

ONE YEAR MEN

Conductors

Name	Badge	Name	Badge	Name	Badge	Name	Badge	Name	Badge
Knoblock, F.	1884	Isaacson, C.	5150	Schroeder, A.	6162	Smith, A.	8688	Daly, D.	10992
Washco, C.	2178	Gorring, A.	5194	Kozak, A.	7346	Rahn, A.	8950	Beavers, W.	12912
Berg, H. W.	2380	Renshaw, R.	5288	Cummane, W.	7548	Winkelman, W.	9170	Valchar, J.	13780
De Olivera, H.	3016	Vasek, C.	5760	Krug, H.	8300	Thul, E.	9248	Frey, C.	13940
Tarsa, E.	3654	Hester, P.	5868	Hanley, M.	8556	Prindiville, J.	10930	Jakowbek, W.	14036
Doumel, C.	4894	Fischer, S.	5932						

Motormen

Daugherty, C.	3355	Brown, C.	5095	Mosena, G.	7993	Wangel, J.	8407	Stokes, E.	9867
Lehr, J.	3491	Maire, O.	5497	Hanily, J.	8041	Haase, C.	8647	Mansbrek, E.	9875
Gerry, F.	4229	Pearson, O.	6165	Hunt, T.	8119	Diven, O.	8677	Langner, C.	10231
Roskopf, W.	4527	Floeter, C.	6471	McKay, H.	8143	Boggan, J.	8941	McFadden, W.	10547
Murphy, W.	4589	Schroeder, E.	6779	Sweeney, P.	8147	Klima, E.	9127	Kane, J.	10823
Rahn, A.	4717	Doherty, P.	7033	Manson, F.	8185	Chandler, F.	9163	Jensen, E.	11021
Fogarty, M.	4993	Bring, G.	7819	Nelson, H.	8323	Augustine, F.	9723	Klouzer, J.	13577

TWO YEAR MEN

Conductors

Gongol, F.	218	Richter, P.	2764	McGarvey, P.	6920	Martin, M.	8232	Zarek, L.	11282
Butler, W.	1930	Kohout, O.	4946	Bromann, T.	7630	Knizek, R.	9188	Pavck, F.	11486
Allen, W.	2294	Henry, L.	4968	Stoneham, L.	8114	Pearson, E.	11110	Condon, E.	12534
Burns, E.	2542	Nyhan, J. J.	6592						

Motormen

Koukul, E.	619	Nelson, A.	4841	Cameron, S.	8079	Truhler, J.	9713	Maroney, T.	11941
McKenna, E.	751	Shurley, R.	6419	Suchan, J.	8523	Johnson, J.	10389	Shaw, W.	12397
McAuliffe, T.	2315	Halligan, R.	6939	Fehling, H.	9615	A'Hearn, W.	11425	Verbillion, E.	12957
Zuhaski, J.	2547	Burke, T.	8071	Tuchowski, P.	9633				

THREE YEAR MEN

Conductors

Dammann, H.	328	Doyle, T.	3642	Kramer, W. C.	7992	Haupt, V.	10958	Otto, E.	12036
Andrae, F.	336	McCarthy, J. T.	5990	Olsen, A.	8886	Shipper, W.	11950	Shanley, D.	12544
Walsh, T.	926	Vernon, J.	7444	Tokarz, W.	9966				

Motormen

Farrell, P.	301	Kuras, T.	4705	Wojchowski, S.	5437	Krygsmen, J.	8109	Moravec, E.	10223
Shanahan, T.	353	Nieman, C.	5385	Keidel, G.	6351	McNamara, M.	8145	McDermott, E.	11917
Havlicek, E.	451								

FOUR YEAR MEN

Conductors

Fahey, M.	2878	Hrubez, G.	3374	Schaid, A.	6260	Brazill, J.	6800	Cox, T.	7086
-----------	------	------------	------	------------	------	-------------	------	---------	------

Motormen

Egan, G.	1207	Cinkus, J.	5011	Molik, A.	6319	Sullivan, W.	9073	Yager, F.	12405
Kurtzman, F.	1809	Regan, P.	5941	Hersh, L.	8257	Sheehan, D.	10311		

FIVE YEAR MEN

Conductors

Kempa, J.	468	Kelleher, W.	3318	Doll, R.	6802	Dietz, E.	12944	Prochaska, J.	14248
Johnson, J.	2426	Hester, J.	5160	Marre, W.	7704	Begley, M.	13482		

Motormen

Hause, H.	1011	Schutt, P.	7667	Vornkohl, H.	8117	Cory, C.	9937	Fitzpatrick, J.	10605
-----------	------	------------	------	--------------	------	----------	------	-----------------	-------

SIX YEAR MEN

Conductors

Vacha, F.	776	Ford, J.	2140	Maloney, F.	7664	Croughan, P.	11194	Weise, H. J.	13438
Vrba, G.	1192	Lynch, J.	4944	Sheehy, T.	8004	Matre, F.	11546	McKiernan, F.	13612
Perkins, C.	1776	Rennie, C.	5500	Jacobs, L.	9316	Nolan, V.	11562	Cameron, G.	14088

Motormen

Bradley, J.	2651	Kindle, F.	8229	Keating, J., No. 1	10539	Ehrich, H.	11719		
-------------	------	------------	------	--------------------	-------	------------	-------	--	--

SEVEN YEAR MEN

Conductors

Vlach, O.	136	McGuire, F.	3154	Colman, M.	5222	Boberg, J.	10182	Mondike, J.	10758
Clarke, P.	892	Mullen, C.	4494	Harris, W.	5462	Sullivan, T., No. 2	10684	Hayes, H.	10848
Subaitis, W.	2106	Czech, J.	4556	Oak, G.	7656	Marek, F.	10696	Madill, J.	10850
McMahon, B.	2184	Birmingham, R.	4776	Deets, H.	8482	Miller, F. A.	10706	Sherpan, J.	12664
Huecksted, C.	3124	Gilroy, P.	4900	Hanley, B.	9012				

FOUR YEAR MEN

Conductors

Name	Badge	Name	Badge	Name	Badge	Name	Badge	Name	Badge
Gach, A.....	2892	Holdych, J.....	7622	Wernert, J.....	9484	Klimas, J.....	10928	Hoglund, C.....	12444
Carlson, C.....	4016	Andrews, V.....	8182						

Motormen

Valenta, J.....	973	Jacob, A.....	5625	Buckley, P.....	5707	Suske, W.....	10501
-----------------	-----	---------------	------	-----------------	------	---------------	-------

FIVE YEAR MEN

Conductors

Venzke, H.....	7542	Baruch, W.....	8570	Gross, N.....	9060	Kalaf, G.....	10314
----------------	------	----------------	------	---------------	------	---------------	-------

Motormen

Cavanaugh, J., No. 2.....	6743	Cavanaugh, J., No. 1.....	8395	Schwartz, L.....	9123
------------------------------	------	------------------------------	------	------------------	------

SIX YEAR MEN

Conductors

Mlyniec, F.....	2568	Neumann, E.....	5704	Piper, A.....	8654	Brouse, J.....	11526	Karlo, J.....	14134
Rampage, W.....	3184	Kobel, J.....	7332	Perkaus, G.....	11108	Sides, G.....	13110	Dominiak, S.....	14448
Smutny, J.....	4244	Tetrick, J.....	7836						

Motormen

Olinski, J.....	7647
-----------------	------

SEVEN YEAR MEN

Conductors

Ringl, F.....	4068	Holan, J.....	7642	O'Toole, P.....	10130	Wapon, S.....	10724	Petras, S.....	13726
Novak, C.....	4084	Johnson, C.....	9972	Kouba, J.....	10180	Miller, P.....	11160	Wruck, H.....	14040
Koutny, E.....	7214								

Motormen

Dennehy, T.....	2181	Pontarelli, H.....	6399	Weaber, G.....	7493	Kennedy, T.....	10427	Collins, W.....	10581
Fitzpatrick, T.....	5549	Hybl, M.....	6719	Toborg, A.....	9487				

EIGHT YEAR MEN

Conductors

Schoenfeld, F.....	732	Olsen, R.....	4818	Wandry, H.....	8862	McKillop, J.....	12936	Rogalinski, C.....	13284
Paszternak, C.....	3738	Fiala, J.....	5678	Kutschke, G.....	11010	Lindensmith, J.....	12954	Brhel, J.....	13982
Schroeder, B.....	4500	Stark, N.....	6314	Kierstein, J.....	11056	Schwartz, F.....	12982		

Motormen

Marvin, J.....	6171	Kukulka, L.....	6357
----------------	------	-----------------	------

NINE YEAR MEN

Conductors

Lenau, J.....	388	Brezinsky, V.....	4378	Szarat, J.....	6148	Ryan, F.....	8128	Bamford, J.....	9986
O'Neill, E.....	400	Mikulecky, E.....	4416	Tbelin, M.....	6738	Vlach, E.....	9124	Clinnin, J.....	10878
Cudahy, C.....	920	Carlson, A.....	4904	Collins, J.....	6756	Camer, P.....	9328	Buehring, H.....	11632
Weber, O.....	2080	Sholdice, J.....	4980	Wilson, W.....	7344	Calabrese, N.....	9856	Hodel, J.....	11778
Nails, C.....	2664	Steiner, M.....	5148	Linden, J.....	7484	Gielow, F.....	9926	O'Dowd, A.....	13774
Fish, C.....	3018	Bethke, H.....	5948	Williamson, A.....	7488	Loomos, N.....	9964	Chvatal, E.....	14246
Kadlec, R.....	3850	Murphy, W.....	6138	Mencil, J.....	7726				

Motormen

Morley, M.....	1783	Seissman, W.....	5531	Cichowicz, V.....	6185	Hurley, J.....	9165	Kostakis, A.....	11837
Miderski, J.....	4533	O'Brien, M.....	6145	Creighton, W.....	9121				

DIVISION No. 7—KEDZIE

ONE YEAR MEN

Conductors

Roach, J. E., No. 2.....	168	Cannolly, T.....	3076	Cannon, G. B.....	6120	O'Sullivan, J., No. 2.....	8532	Alton, G. P.....	11976
Philbin, M.....	214	Donohue, J. D.....	3396	Eccardt, C. J.....	6178	Eding, H. P.....	8674	Gough, T. P.....	11998
Tobin, J. H.....	992	Willoughby, R.....	4192	Casey, J. D., No. 2.....	6504	Denny, K. A.....	8864	Kennedy, W. L.....	12084
Hammerton, J. E.....	1364	Hilliard, L. S.....	4254	Schmidt, C. A., No. 1.....	6980	Dahlberg, C. J.....	9238	Schultz, C. E.....	12158
Ritchie, O. D.....	1680	Maines, F. C.....	4732	Cvetan, Geo.....	7416	Brennam, W. F.....	9322	McElroy, S. E.....	12334
McGrath, P.....	1842	Lynch, J. L.....	5000	Fogarty, M.....	7772	Dowling, W.....	9630	O'Connor, J. J.....	12580
Grund, W. F.....	2084	Pankey, J. L.....	5658	McVery, U. S.....	6158	Moran, T. W.....	9878	Murray, A. R.....	12838
Baruch, J.....	2844	Collins, H. N.....	5664	Amsterdam, B.....	8194	Hill, E. G.....	10688	Kramp, P.....	13542
Cagney, P.....	2910	Powers, Ed.....	5766			Hyde, J. D.....	11050	Wallgren, M.....	13830
		Mulryan, Jas.....	6060					Gibbons, E. J.....	13902
								Conley, T. J.....	14092

Motormen			
Name	Badge	Name	Badge
Nolan, E. A.	133	McGovern, O.	5141
Tessmer, H. F.	221	Toomey, Wm.	5255
Nolan, J.	887	O'Meara, P.	5335
Whelan, Geo.	901	Moriarity, P.	5543
Schmidt, T.	1193	Bagnall, Ger.	5607
Sobotnik, A.	2085	Wendorf, B.	5681
Schmidt, H. E.	4099	Solan, M. J.	5779
Nanos, N.	4347	Dawson, Jos.	5815
Kruse, H.	4475	Ruck, J.	5821
Sanders, C.	4599	Murray, M. A.	6739
Amidon, F. E.	4689	Crotty, H.	6951
Fullerton, R.	5013	Hadaway, K. T.	7339
Kielzynski, T.	7479	Hiebcl, J.	7697
Larson, Sam.	7721	Dinneen, J.	7737
Thompson, Geo.	7747	Nare, O. S.	7759
Sherman, J.	7767	Eckerle, F.	7805
Hall, H. W.	7885	Carolan, B.	7899
Fremer, F.	8021	O'Connor, D.	8025
O'Connor, D.	8025	Whitner, E. H.	8429
Whitner, E. H.	8429	McCarthy, Wm.	8499
Wohlenhaus, F.	8695	Burnett, E. A.	10465
Scanlan, Chas.	8819	Schoo, F. M.	10925
Pound, E. A.	8821	Darcy, W.	11151
Lees, L. A.	9217	Baker, W. D.	11945
Shirer, G.	9255	Mahoney, W. F.	12133
Stoll, B.	9333	Scriven, J.	12526
O'Connor, Thos.	9433	Oldham, W. W.	12961
Jarozewic, B.	9571	Young, F., No. 2	13237
Wheeler, A. E.	9667		
Crowley, D., No. 1	9909		

TWO YEAR MEN

Conductors			
Sampson, T.	178	Simmons, E.	3162
Johnson, A., No. 2	854	Schocker, W.	5186
Ahern, Wm.	1040	Rollo, H. O.	5662
Craig, J., No. 2	1566	Nelson, C. S.	5788
Hooper, R. L.	2090	Johansen, A.	5902
Jacoby, T. J.	2246	Farrar, W. R.	6310
Stephensen, G.	2698	Daum, F. E.	7238
Debus, W. A.	7842	Rogerson, N.	9344
O'Donnell, J. P.	7890	Cue, W. L.	9352
Gleason, E. F.	8168	La-Voy, J. B.	9922
Coffey, F.	8348	Brown, W. H.	10452
O'Rourke, Ed.	8382	O'Leary, T.	10494
Moore, W. J.	9112	Walsh, Thos., No. 3	10822
Gibbons, M.	9120	Renfrow, L. M.	11294
		Devlin, G. P.	11634
		Sullivan, J. J.	12916
		Cahill, J. E., No. 2	12938
		Johnston, R. B.	13136

Motormen

Shea, J. P.	419	McEntegart, J. M.	4647	Walters, F.	7181	Leahy, R.	9085	Nash, J.	10341
Lawler, P., No. 2	2741	Ruane, Jas.	4927	Downes, A.	7817	Fleischman, N. H.	9191	Bowler, J.	11209
Dorgan, G. J.	2901	Hartmann, G.	6011	Schumaker, C. L.	7971	O'Mara, J.	9551	Sabo, O.	11261
Carr, M. J.	3143	Farrar, Thos.	6105	Lasos, K.	8673	Reinhart, J.	9839	Butler, M.	11277
Kuehne, E.	4541	Rumney, H.	7077	Pembroke, J.	8773			Slattery, D.	11907

THREE YEAR MEN

Conductors									
Bloyd, W. E.	626	McGuire, E. P.	4258	Donovan, Ed.	6388	Minert, C.	8308	Michael, H. A.	11438
Zaruba, L. V.	1378	Coleman, A. J.	4406	Coles, C. D.	6512	Tribble, M. J.	9106	Spillane, D.	12424
Murphy, T.	2744	Poch, A.	4504	Leahy, Geo.	7036	Edie, O.	10334	Coleman, J. J.	13432
Legg, R.	3178	Blume, H.	4548	Foot, F. M.	7270	Hastings, J.	10484	Zoller, D.	14068
Edgcomb, F.	4208	Gustafson, C.	5170	Steik, Jas.	7310	Voss, E. G.	10504	Hermann, W.	14078
Hester, J. J., No. 1	4220	Benisek, J. E.	5372	Coffey, M. J.	7866				

Motormen

Lambert, J.	933	O'Connor, J., No. 1	4637	Windle, M.	5393	Luedke, Wm.	6481	Smith, M.	11501
Curran, B.	3273	Bradley, D.	4821	Herlad, J.	6041	King, F.	9229	Gust, L. E.	12407
Crowley, T.	3631	Peters, W. J.	5319	Beyers, G. W.	6309	Furlanetto, J.	9629	Helm, F. W.	12991

FOUR YEAR MEN

Conductors									
Watz, E.	772	Gibbons, M., No. 3	2378	Millea, R. F.	5976	Walsh, T. F., No. 2	10464	Weeks, H. L.	12606
Voelker, C.	1018	McGrath, J. F.	2390	Wible, O.	7966	Sullivan, R. J.	11992	Balcinus, A.	13540
McDonald, M.	1998	Ryan, J., No. 2	4644	Daily, J. F.	8196			Dolan, W. B.	14140
Warning, R. C.	2334			Ryan, T.	8292				
Motormen									
Horan, J., No. 3	1745	Chamberlain, C. S.	4253	Saemann, Wm.	5415	Nagle, J. H.	6371	Quinlann, J. R.	10721
Murphy, T., No. 2	4157			Fisher, A. R.	6205	Stack, J. J.	6519		

FIVE YEAR MEN

Conductors									
Mulligan, M.	1530	Rice, G. R.	5258	Miller, S. L.	6772	Woods, M.	11062	Sraybr, J.	14074
Heafey, M.	2092	Seebock, C.	5452	McGregor, Wm.	7384	Culton, C. S.	13004	Gliwa, H.	14162
Hyland, M. T.	3308	Lynch, Thos.	5672	Jones, J. T.	8720	Slattery, T. J.	14018	Pebous, W.	14228
Stege, W. A.	3512	Dillon, T. J.	6140	Cahill, C. M.	10988				
Motormen									
Quinn, Thos.	691	Williams, H. H.	4725	Maloney, M., Mo. 2	4973	Joyce, P. J.	5301	Griffen, J. J., No. 1	11289
O'Leary, T.	2733								

SIX YEAR MEN

Conductors									
McInerney, J., No. 1	4352	McGrail, P.	8214	Hughes, J. W.	9540	Musker, Dan.	11036	Brady, H. P., No. 2	12266
Reents, J. F.	8132	Finn, W. E.	8658	Dwyer, F. F.	10752	Devine, J.	12228	Nelson, A. W.	14158
Motormen									
Stafford, N.	1067	McClement, A. W.	2617	Edelstein, C.	3563	Fischer, F.	7185	Crowley, D. P., No. 2	7491
Lamm, J. A.	1815			Healy, C. B.	5429	Beggs, F.	7477		
				Flynn, Wm.	6393				

Name	Badge	Name	Badge	Name	Badge	Name	Badge
Breiztke, F.	185	Malo, E.	4767	Gillies, B.	6585	Fennema, F.	7507
Thom, W.	513	Finnegan, F.	4867	Christenson, W.	6603	O'Mahoney, J.	7539
Goorskey, J.	655	Jensen, P.,		McGuire, E.	6607	Harper, J.	7655
Beurke, E.	1089	No. 2.	5099	Krause, J.	6649	Joedicker, N.	8023
Stephanowski, L.	1393	Digilio, A.	5143	Mullen, W.	6657	Alsted, A.	8046
Cozza, F.	1621	Casey, E.	5201	Abbott, F.	6775	Gersch, R.	8123
Piper, G.	1953	Stewart, E.	5315	Dobruske, F.	6803	Johnston, H.	8443
Troogstad, O.	2115	Strickland, H.	5465	Bruhn, M.	6835	Neef, W.	8559
Hendricks, J.	2175	Tetrow, W.	5491	O'Brien, D.	6931	Poltrock, R.	8683
Honings, H.	2205	Engelstad, H.	5505	Reed, J.	7017	Bickler, J.	8805
Cumbo, D.	2475	Stewart, A.	5583	Stanton, T.	7039	Stiglich, T.	8869
Miller, L.	2647	Peterman, L.	5649	Jones, W.	7131	Hennig, F.	8883
Schroederm, M.	4027	Brown, H.	5921	Malotke, H.	7207	Craig, H.	8953
McMahon, J.	4039	Keag, F.	5923	Jacobson, J.	7243	Kulhanek, N.	9037
Harrer, W.	4187	Miller, A.	5987	Crawford, F.	7305	Jensen, P.	9167
Grabowski, E.	4399	Forby, W.	6003	Clark, C.	7335	Corcoran, P.	9233
Starchovic, J.	4487	Fulton, B.	6055	McCullough, E.	7361	Smith, J. P.	9715
Hanneman, T.	4707	Martin, E.	6495	Craemer, J.	7499	Hinspater, W.	9761
		Johnson, F.	6499				

Motormen

Name	Badge	Name	Badge	Name	Badge	Name	Badge
Hanson, L.	470	Haak, E.	3737	May, G.	5812	Macey, E.	8043
Teschky, J.	678	Zander, R.	3807	Ring, J.	7009	Smith, G.	8090
Smith, P.	1132	Raypholtz, P.	4091	Sruggs, T.	7186	Schelkopf, A.	8320
Bremer, E.	1284	Babbitt, R.	4366	Hill, J.	7244	Nerry, H.	8330
Grier, J.	1345	Anderson, H.	4547	Nash, B.	7404	Oakley, J.	8589
Prester, A.	1831	Olsen, C.	5247	Woodrum, L.	7703	Gebel, H.	9205
Veltmann, C.	2946	Wickhorn, C.	5616	Wickman, G.	7818	Turley, J.	9449
Anderson, W.	3254	Ahern, W.	5797	Davis, C.	7983	Kamowski, L.	9740

Bus Operators

TWO YEAR MEN

Conductors

Hickox, J.	262	Williamson, E.	4210	Pokrywka, J.	7716	Gill, P.	11262	Hoyem, J.	12978
King, H.	940	Haucknecht, H.	5666	Paulson, H.	7830	Smith, L.	11532	Pearce, J.	13024
Lauter, A.	1354	Bolton, O.	5694	West, M.	7958	Drew, O.	12286	Galvin, J.	13114
Ritter, A.	2058	Lynch, J.	5794	Hempy, E.	8036	Lorenz, H.	12314	Moran, W.	13174
Hastings, J.	2122	Anderson, E.	5862	Morrow, J.	8144	Shelton, W.	12422	Considine, L.	13200
Burkman, H.	2666	Smith, E.	5882	Schwabe, H.	8624	Mix, L.	12738	Sponholz, W.	13366
Granow, P.	3298	Ferwerda, R.	6272	Davie, M.	8698	Walsh, G.	12800	Spangheo, W.	13590
O'Malley, P.	3436	Bobula, E.	6340	Walsh, E.	8734	Anderson, C.	12870	Burgermeister, H.	13600
Beister, C.	3924	Kearns, B.	6346	Wacholz, W.	8756	Walsh, J.,			
La Frana, D.	3954	Roquet, O.	6692	Czarnecki, J.	9932	No. 2.	12894		
Johnson, L.	4094	Jiambaloo, J.	6694						

Motormen

Fuhrman, A.	187	Tschui, U.	5663	Borck, N.	7555	Kaupert, J.	10221	Osolin, J.	12233
Polich, F.	323	Loftus, T.	5883	Trumbull, N.	8091	Korman, O.	10557	Nelson, H.	12323
Shoemaker, H.	405	Keag, F.	5923	Woods, P.	8919	Sarley, R.	11181	Rawlings, T.	12695
Burt, H.	2957	Ropinski, J.	6493	O'Dell, J.	8923	Jameson, S.	11295	Smith, P.	12921
Morris, J.	4159	Zurek, F.	6703	Anderson, G.	9141	Beeske, J.	11317	Wesely, S.	13297
Anderson, J.	4447	Strobeck, C.	7115	Greenwald, J.	9199	Singer, J.	11413	Emmett, T.	13371
Gustafson, A.	4469	Lynch, H.	7215	Nachtigal, A.	9247	Benson, A.	11515	Braman, F.	13455
Mullen, W.	4677	Matz, A.	7219	Jensen, H. C.	9969	Pricman, W.	12181	Langner, W.	13541
Hall, L.	5213	Anderson, F.	7519	Loftus, M.	10091				

Bus Operators

Hanson, W.	982	Kramer, E.	2912	Benedict, J.	5586	Gabriel, C.	10172	Rogers, T.	12440
Christian, R.	1397	Sorenson, J.	4602	Dutton, H.	5728	Smith, T. L.	11135	Lee, H.	12486
Robitzke, E.	1976	Sprague, J.	5244	Peterson, H.	5810	Boggs, J.	11412	O'Donnell, G.	12689
Barth, F.	2676	Lockwood, A.	5348	Potesta, S. L.	6253	Jahnke, W.	11490	Matthias, E.	13924
Welch, R.	2732	Hucksoll, E.	5350						

THREE YEAR MEN

Conductors

Hynes, O.	448	Roggerman, A.	3900	Mallon, J.,		Brown, E.	8952	Otto, F.	12820
Lash, F.	490	Schlack, E.	4104	No. 1.	7286	Knapp, F.	9040	Sullivan, D.	13126
Motyka, J.	756	Warnecke, C.	4524	Galvin, J.,		Laechelt, E.	9290	Howlett, J.	13302
Lyons, R.	1610	Linklater, A.	4564	No. 1.	7854	Klewin, E.	9746	Pfrommer, H.	13368
Helm, C.	2234	Bannon, P.	5426	Roeser, J.	7970	Shea, L.	9978	Quillinan, J.	13760
Wilson, C.	3808	Curtin, D.,		Miller, E.	8014	Schmidkamp, L.	10248	Colson, V.	13818
Johnson, A.	3844	No. 2.	5716	Seghers, A.	8288	Behnke, J.	10468	Scholle, H.	14072
Umlauf, H.	3846	Rable, E.	6570	Kraft, L.	8774	Miller, E.,			
						No. 3.	11554		

Motormen

Schaaf, F.	329	Mathes, R.	1925	Morley, H.	5293	Carey, T.	8815	Byrne, M.	11483
Busch, C.	423	Grundt, G.	3687	Evans, E.	5359	Korman, J.	9405	Buckley, G.	11775
Dopp, H.	493	Nestel, G.	4019	Granz, C.	5721	Haslinger, S.	10019	Oglesby, E.	12087
Strutz, M.	1731	Sherlock, H.	5227	Reinhart, J.	7915				

Bus Operators

Mix, H.	2506	Gabrielson, W.	4331	Walker, A. P.	8542	Mueller, H.	11426	Talent, J.	12178
Schreiman, E.	3412	Griffen, J. E.	5864	Overstreet, J.	8586	Donarski, C.	11774	Scheffe, R.	12495
Balicki, S.	3939	Broten, A. E.	7151	Krickow, A. L.	9439	Swanson, A.	11971	Habbestad, H.	13591
Clark, W.	4060								

FOUR YEAR MEN

Conductors

Name	Badge	Name	Badge	Name	Badge	Name	Badge	Name	Badge
Hanson, A.....	398	Schaefer, C.....	3030	Sinnott, M.....	7840	Anderson, H.,		Mandelka, J.....	9608
Kurtzrock, R.....	868	Klauser, L.....	4982	Meyers, J.....	8064	No. 1.....	8270	Kelly, D.....	10116
Carlson, H.....	2204	Bernard, J.....	5180	Larsen, W.....	8074	Instone, L.....	8592	Zielinski, J.....	14046
Smith, B.....	2416	Dwyer, W.....	7718					Kingstand, M.....	14124

Motormen

Shreeve, J.....	299	Preston, E.....	2975	Blume, H.....	7475	Murphy, J.....	9797	Kerins, M.....	11439
Wilson, F.....	799	Nuemayer, A.....	4775	Fredrickson, F.....	8737	Groch, M.....	10679	Reidell, E.....	12933
Canadeo, T.....	1781								

Bus Operators

Bartz, F.....	3028	Stump, E.....	11066	Marren, J.....	12082	Gray, R.....	12924	Nelson, E.....	13595
Cale, F.....	6890	Fitzpatrick, J.....	11178						

FIVE YEAR MEN

Conductors

Fischer, W.....	2102	Norum, M.....	4514	Meyers, L.....	8070	Simon, P.....	10552	McMullen, J.....	11312
Fischer, F. M.....	3054	Curtin, D.,		Turpin, F.....	8926	Batchelor, W.....	10626	Rennhack, H.....	13092
Adams, J.....	3312	No. 1.....	5434	Larson, O.....	9302	Mjelde, N.....	10836	Schroeder, H.....	13094
York, J.....	3560	De Juren, J.....	6598	Westlake, W.....	9792	Ash, C.....	11032	Reck, G.....	14358

Motormen

Keating, O.....	5685	Jenner, C.....	7549	Diebold, P.....	8915	Nissley, H.....	12017	Stanley, G.....	12429
-----------------	------	----------------	------	-----------------	------	-----------------	-------	-----------------	-------

Bus Operators

Kaitschuck, B.....	6484	Riend, W.....	12588	Jameson, A.....	14024	Riefenberg, L.....	14060	Fleming, E.....	14518
Burns, M.....	12436								

SIX YEAR MEN

Conductors

McNally, P.....	716	Falk, O.....	4886	Fell, W.....	8054	Kupeczyk, H.....	8752	Batzloff, O.....	12966
Spears, W. E.....	980	Bresnahan, D.....	4990	Short, J.....	8164	Chaddock, J.....	8858	Halek, A.....	13112
Moir, R.....	1332	Rice, J.....	5056	Fossum, H.....	8386	Gouldin, R.....	9520	Gorman, S.....	13240
Vlasak, W.....	1400	Muchow, E.....	5722	Meaney, P.....	8396	Burt, E.....	11398	Dahl, W.....	14130
Albro, W.....	3688	Seipp, A.....	6742	Schlosser, W.....	8448				

Motormen

Rafter, P.....	1289	Dyra, J.....	5225	Rovill, F.....	6149	Bergman, A.....	7165	Condellis, D.....	11487
Wnuck, J.....	1469	Moos, L.....	5363	Cronin, P.....	6315	Cordes, W.....	7591	Sedgwick, W.....	11609
Geigold, C.....	4551								

Bus Operators

Pendell, J.....	1598	Whitney, H.....	3829	Kalish, H.....	8044	O'Sullivan, P.....	12421	Tyrriver, G.....	13609
La Pointe K.....	2535	McNamara, L.....	7392	Johnson, A.....	11222	Clark, H.....	13128		

SEVEN YEAR MEN

Conductors

Vraney, F.....	1964	Hemstreet, F.....	6640	Kinski, F.....	9158	Granahan, J.....	9924	O'Connor, A.....	11888
Ehlers, H.....	4796	Ziedler, A.....	6746	Coleman, F.,		Peterson, P.,		Morrison, F.....	13276
March, F.....	4966	Marshall, W.....	7500	No. 1.....	9388	No. 2.....	11196	Johnson, L.....	14560
Rogers, E.....	6290	Haughey, P.....	8384			Abraham, W.....	11374		

Motormen

Radke, C.....	957	Parker, T.....	6125	McGivern, W.....	9791	Maboney, J.....	11357	Bell, J.....	11567
Lidke, A.....	1851	Mitchell, J.....	7267	Anderson, E.....	9983	Smith, P.....	11479	Moir, H.....	11975
Hanson, A.....	1977	Gradows, M.....	8863						

Bus Operators

Klupar, E.....	2592	Pederson, H.....	4634	Fitzmaurice, J.....	9649	Newman, W.....	12172		
----------------	------	------------------	------	---------------------	------	----------------	-------	--	--

EIGHT YEAR MEN

Conductors

Swanson, G.....	3692	Peterson, M.....	5154	Roggerman, C.....	11984	Helgerson, C.....	13704	Malotke, H.....	7207
Kures, E.....	4000	Moesch, J.....	5270	Zabloyny, T.....	12540	Dahlquist, E.....	14116	Elling, C.....	7545
Cronin, E.....	4498	Garry, H.....	10602	Onorato, T.....	13470	Durkin, P.....	1657	Johnson, E.....	9249
Sonnenberg, G.....	4800	Nesbitt, A.....	11512	Vogel, A.....	13678	Sullivan, T.....	3475	Laurenson, H.....	12373
Schultz, H.,									
No. 1.....	5008								

Bus Operators

Golding, E.....	4002
-----------------	------

NINE YEAR MEN

Conductors

Name	Badge	Name	Badge	Name	Badge	Name	Badge	Name	Badge
Larsen, P.	820	Williams, H.	5074	Phelan, J.	6912	Conlon, T.	8442	Richter, L.	11120
Masterson, M.	1010	Gersch, A.	5184	Hayes, W.	6928	McGovern, D.	8606	Moran, J.	11406
Palmer, J.	1590	O'Niell, T.	5190	Tietjens, C.	7012	Beers, I.	8904	Freeman, H.	11620
Munzig, C.	2790	Ritt, E.	5376	Olsen, G.	7142	Shehan, T.	8920	Butler, G.	11640
Fischer, J.	3234	Woodbury, A.	5456	Stanton, R.	7298	Simon, E.	9052	Hunter, J.	11914
Cannon, E.	3484	Osmund, P.	5470	Kramer, J.	7340	Jaggin, E.	9310	Ranberg, H.	11964
Cochrane, F.	3608	Johnson, P.	5696	Jones, R.	7538	Murphy, J.	9542	Muslof, A.	12088
Tomblin, L.	4032	Smith, H.	5726	Carbonel, J.	7592	McDonnell, E.	9624	Voss, C.	12546
Thornton, T.	4170	Wern, W.	6440	Merker, W.	7604	Rietmier, W.	9658	Johnson, J.	12678
Mason, M.	4284	Murphy, P.	6518	Lash, J.	7846	Filson, J.	9684	Flanagan, C.	12872
Olanquist, W.	4408	Lind, T.	6532	Pretzel, W.	8018	Burgett, B.	9848	Borucki, T.	13010
Sullivan, D.	4574	Nolle, E.	6686	Kortman, A.	8024	Lee, W.	10140	Poggensee, R.	13134
Miller, E.	4744	O'Grady, T.	6734	Zartman, L.	8120	Zitzow, W.	10336	Weber, W.	13574
Studemann, E.	4934	Kenny, J.	6770	Mahoney, J.	8208	Walsh, D., No. 1	10966		
Martina, L.	4986	Windfield, A.	6854	Kidney, J.	8236	Weiss, M.	11026		
Durkin, E.	5024	Vesley, F.	6872	McMahon, J.	8314				

Motormen

Frese, H.	5369	Anderson, H.	6581	Simon, J.	7523	Karlson, K.	7901	Gross, G.	9209
Dunn, L.	5747	Cadogan, A.	7109						

Bus Operators

Jonson, L.	1394	Good, E.	4890	Baker, A.	8690	Winters, E.	13332
------------	------	----------	------	-----------	------	-------------	-------

DIVISION No. 9—ARMITAGE

ONE YEAR MEN

Conductors

Till, J.	234	Greener, R.	5064	Ross, C. G.	7534	Kusch, W.	8962	Christoffel, C. J.	11044
Tryba, J.	886	Schumacher, O.	5130	Tamillo, J.	7706	Opland, A.	9920	Wojciechowski, L.	11388
Larson, R.	1434	Hendricks, R. J.	5226	Naylor, H.	7736	Waincott, R.	10016	Haarz, W.	11594
Gamper, R. W.	1488	Boyce, A.	5262	Brockman, J. E.	7760	Schultz, J. L., No. 2	10234	Pflum, G. A.	12398
Bruh, C. A.	1862	Haley, G.	5708	Norkus, M.	7780	Fiorita, M. J.	10392	Kelly, P.	12434
Callahan, T.	2196	Thaler, R.	5946	Mortlock, E.	7796	Vierling, G. F.	10414	Jonas, J.	13420
Skomer, J.	2240	Moran, M. J.	6444	Coughlin, J.	7908	Carpino, J.	10502	Schmidt, J. F.	13572
Kierzewski, O.	3754	Marmoll, E. J.	6470	Zimmerman, G.	8302	Krebl, G.	10658	Schrack, F.	14168
Woods, J. F.	3756	Hanson, N. J.	6596	Moffitt, T.	8424	Rapp, R. T.	10728		
Pahnke, W.	3988	Moran, D. F.	7240	Barrett, F.	8558	Donnelly, F.	10946		
Walls, R.	4572	Peretti, P.	7302	Munzer, M.	8958				

Motormen

Krause, W.	1161	Sprague, J.	6283	Adamczyk, W.	8659	Doll, W.	9695	Webster, W.	11851
Koscal, S.	2471	Pedersen, L.	6655	Fritsch, W.	8691	O'Donnell, T.	9775	Carroll, P. J.	12315
Weege, W.	2759	Schweizer, H. G.	6811	Benson, T.	9151	Guidice, J. E.	10433	Hill, H.	12669
Peterson, C., No. 1	3253	Brown, A. H.	7019	Kochanski, A.	9179	Nicpon, A. S.	11191	White, J.	12719
Grane, C. J.	3507	Sabatka, F. J.	7543	Kochanski, A.	9197	Meline, W.	11535	Priewski, W.	12783
Poklenkowski, E. S.	5031	Balder, J.	7967	Montgomery, J. R.	9445	Dustin, J.	11541	Taliaferro, A.	12805
Koglin, A.	5409	Frey, P. H.	8141	Wing, R.	9637	Sovern, S.	11727	Cullen, J. P.	12903
		Zarek, H.	8183	Manthei, E.	9665	Krawzak, S.	11799	Wagner, F.	13069
		McCutcheon, F.	8579						

TWO YEAR MEN

Conductors

Colum, E. I.	408	Rundblad, E.	6214	O'Keefe, J.	7764	Faber, W.	9442	Rohr, A.	12886
Pradelt, P.	2060	O'Shaughnessy, T.	6322	Tamillo, F.	7784	Conne, M.	10390	Witkowski, C. F.	13382
Greleski, S. E.	2108	Helgesen, R.	7024	Kindahl, C.	7862	Bellamy, J.	10854		
Urtz, F.	2216	Kloock, A. H.	7166	Boothman, G.	8086	Fry, L.	12476		
Doerrler, A. W.	4880			Flaherty, T.	8370	Hernet, L.	12864		

Motormen

Pollowczyk, J.	265	Lamont, G.	1679	Rempala, W.	5391	Halverson, H., No. 1	7801	Kelly, D.	9451
Winther, R.	617	Waslicki, W.	3413	Skahill, P.	5731	Dahlen, G.	7975	Badchen, M.	9693
Gaich, L.	971	Amore, T.	4557	Prendergast, W.	5919	Mullard, O.	8597	Jaacks, E.	11037
Tollefsen, T.	1225	Poklenkowski, E. S.	5031	Gnech, E. W.	6635	Seims, W.	9389	Croon, R. H.	13359
Hughart, E.	1231								

THREE YEAR MEN

Conductors

Kuehl, W.	746	Connors, C.	1832	Hughes, J.	6792	Doyle, A.	9592	Melanphy, F.	12478
Neubauer, E. F.	1494	Hickey, J.	1876	Meyer, H. E.	7702	Ketter, G.	9702	Mitchell, P.	13750
Goyke, A.	1604	Ludwig, T. O.	5298	Kruger, E.	8876	Dressler, G.	11422		
Fran, J.	1700	Bochte, J. A.	5600	Vojta, J.	9128	Thomas, J. E.	12254		

Motormen

Stenbro, D.	845	Nelson, C. E., No. 2	5739	Goyke, J.	6089	Heinmann, B.	10171	Ruppell, B. H.	12795
Sieckerski, H.	3933	Sares, J.	6035	Patek, S.	8901	Reimer, P.	11387	Eisenlohr, H.	13177
Gibbons, M.	4295			Kuchenny, J.	9795				

DIVISION No. 9—DIVISION ONE YEAR MEN

Conductors

Name	Badge	Name	Badge	Name	Badge	Name	Badge	Name	Badge
Hughes, T.....	324	Kuta, W.....	5152	Hildebrand, T.....	6430	Bowler, G.....	7906	Garlenski, J.....	9480
Weith, W.....	1182	Patterson, H.....	5502	Radke, W.....	6776	Bambula, F.....	8000	Casey, L.....	9522
Hofer, J.....	1418	Larson, H.....	5822	Martinsen, H.....	6780	Nery, R.....	8330	Kearns, J.....	11256
Schulzke, E.....	2068	Claussen, A.....	6166	Ellithrope, J.....	6884	Sweeney, T.....	8562	Cussen, M.....	11856
Stromsta, R.....	2984	Minta, F.....	6198	Bell, J.....	6894	Wronski, J.....	8988	Bellow, S.....	12386
Kaplan, B.....	4314	Lamond, D.....	6420	Garry, J.....	7002	Kowalski, J.....	9356	Kula, J.....	13248
Mistus, S.....	4480								

Motormen

Joy, J.....	281	Poklenkowski, G.	4869	Sorensen, V.....	6073	Malone, F.....	7293	Seriven, C.....	10707
Rosga, M.....	2083	Schafer, J.....	5107	O'Day, F.....	6517	Smith, N.....	7453	Behnke, S.....	10831
Gorski, S.....	2143	Dodick, F.....	5135	Byrnes, J.....	6535	Halle, E.....	7597	Keppler, H.....	11097
Garrity, J., No. 2.....	3167	Brown, P.....	5321	Corcoran, A.....	6627	Nelson, E.....	8425	Warnstedt, C.....	11281
Johnson, J., No. 2.....	3263	Kalas, E.....	5529	Ristow, T.....	6709	Kupinski, M.....	8639	Badin, J.....	12073
Storms, C.....	4637	Pendola, C.....	5931	Kawling, T.....	6959	Erickson, N.....	9771	Knutson, A.....	12393
		Wodarski, S.....	6027	Wickman, G.....	7121	Rush, F.....	10283	Letza, F.....	13219

TWO YEAR MEN

Conductors

Grunewald, L.....	472	Murphy, L.....	1702	Derenski, S.....	5736	Siegbert, H.....	7860	Walsh, J.....	11628
Jauman, J.....	708	Jorgensen, H.....	2316	Misener, C.....	6482	Welde, V.....	9130	Young, A.....	12034
Everett, H.....	794	Anderson, E., No. 2.....	5062	Enzenbacher, A.	6708	Dettmann, F.....	9288	Staton, L.....	12498
Swanson, C.....	1500			Simonsen, S.....	7512	La Vieri, F.....	10870		

Motormen

Lamberti, A.....	155	Malinski, C.....	5253	Kennedy, E.....	6665	Garro, J.....	7705	Meehan, P.....	12817
Didtler, E.....	2169	Johnson, J., No. 1.....	5423	Wozeschke, R.....	6767	Wojciechowski, N.....	9095		
Seidell, W.....	4309	Baldwin, W.....	5843	Jacobson, E.....	7245				
Radoll, A.....	4743								

THREE YEAR MEN

Conductors

Tillett, F.....	2328	Dwyer, J.....	4712	Tansor, H.....	7990	Saycke, J.....	9914	Johnson, J.....	12522
Lipsitz, G.....	4282	Handzik, F.....	4826	Bishoff, F.....	9214	Riley, E.....	11128	Boggs, W.....	12920

Motormen

Glaser, M.....	1307	Kloss, P.....	6511	Lester, T.....	7709	Nagel, F.....	8939	Greenberg, H.....	12433
Vahl, C.....	4979	Grice, F.....	7341	Ghiffe, C.....	8409	Michniewski, A	9223	Szymanski, M.....	12845
Hurtig, E.....	5377	Hahn, W.....	7487	Carosillo, P.....	8667	Peterson, E.....	10211		

FOUR YEAR MEN

Conductors

Blair, J.....	1366	Jacobson, D.....	5188	Warnstedt, O.....	8278	Stellers, G.....	10912	Hendricks, E.....	12180
Barnes, P.....	4772	Eckles, J.....	6840	Bates, E.....	10604	Wielgus, S.....	11844		

Motormen

Redner, R.....	407	Woods, E.....	3497	Russell, M.....	6005	Judge, R.....	9707	Lock, A.....	13127
Griffin, W.....	819								

FIVE YEAR MEN

Conductors

Dienberg, H.....	292	Scherer, L.....	2004	Malawski, J.....	11102	Poltrock, F.....	13086
------------------	-----	-----------------	------	------------------	-------	------------------	-------

Motormen

Honan, T.....	4489
---------------	------

SIX YEAR MEN

Conductors

Stacey, R.....	3522	Wescher, C.....	6502	Schabelski, E.....	7256	Contras, F.....	11162	Starkey, L.....	11524
----------------	------	-----------------	------	--------------------	------	-----------------	-------	-----------------	-------

Motormen

Younglove, S.....	1749
-------------------	------

SEVEN YEAR MEN

Conductors

Lindner, J.....	898	Loftus, B.....	5124	Evanson, E.....	6552	Walsh, F.....	8524	Bowerman, J.....	12186
Taylor, R.....	2628	Dalton, J.....	5582	Bowe, J.....	7308	Koepke, F.....	8870	Bieniasz, A.....	13292
Buenger, W.....	2640	Pretzel, F.....	6244	Klocke, A.....	7380	Smith, E.....	10372		

Motormen

Gaherty, J.....	6621	Matuszak, H.....	9683	Purelda, M.....	11159	Pankow, J.....	12861
-----------------	------	------------------	------	-----------------	-------	----------------	-------

EIGHT YEAR MEN

Conductors

Name	Badge	Name	Badge	Name	Badge	Name	Badge
Mortell, J.....	434	Olbrecht, J.....	6336	O'Hara, T.....	9002	McDonagh, M.....	12324
Janoniak, R.....	2044	Leusch, H.....	6438	Makowski, T.....	9414	Biorn, G.....	12490
Eichstadt, J.....	6026	Becker, P.....	8438	Vohs, G.....	11600	Hayden, J.....	12814
						Schultz, E.....	13230

Motormen

Gorski, S.....	2143	Anderson, H., No. 2.....	13031
----------------	------	-----------------------------	-------

NINE YEAR MEN

Conductors

Penge, F.....	326	Matters, H.....	4718	Garvey, J.....	6974	Sweeney, J.....	8584	Wielgus, M.....	9852
Lauermann, E.....	936	Kelk, H.....	5044	Huber, R.....	7454	Myers, W.....	8598	Raymond, J.....	10152
Sitkiewitz, P.....	990	Tierney, W.....	5306	Wold, E.....	7222	Tint, H.....	8634	Sheehan, W.....	10636
Loewe, G.....	1374	Sabath, W.....	5460	Schal, C.....	8026	Olsen, K., No. 1.....	8638	Mueller, J.....	11688
Marik, F.....	2166	Sanz, L.....	5468	Balkiewicz, P.....	8046	Mullins, J.....	9058	Izban, J.....	11800
Wolski, E.....	2810	Waldy, G.....	6394	Fitzgerald, J.....	8060	Fritchard, J.....	9176	Wilter, J.....	12292
Barbour, A.....	4022	Geller, M.....	6456	Levighn, C.....	8316	Mueller, F.....	9292	Fischer, J.....	12834
Shippy, F.....	4430	Kopsin, E.....	6612	Ness, C.....	8332				

Motormen

Schaefer, G.....	4791	Geneser, J.....	5151	Brennan, P.....	5217	Dubrick, A.....	5439	Mills, A.....	7283
------------------	------	-----------------	------	-----------------	------	-----------------	------	---------------	------

DIVISION No. 10—ELSTON

ONE YEAR MEN

Conductors

Norlin, C.....	1118	Olson, M.....	4608	Mount, I.....	4766	Paul, G.....	7068	Roubinek, M.....	11482
Ballerstadt, H.....	1556	Gough, W.....	4654	Vandever, C.....	4860	Kuierim, C.....	8072	Krzykowski, S.....	13458
Burnett, E.....	1588	Loewe, W.....	4722	Carlson, E.....	5198	Romberg, J.....	8398	Lehman, W.....	13842
Graham, L.....	3358	Horstman, C.....	4742	Kalusa, J.....	6372	Sullivan, M.....	9934	Paluch, J.....	13866

Motormen

Meyer, F., No. 2.....	169	Breitenbach, O.....	2199	Mulligan, B.....	5103	Mallak, T.....	5669	Ward, G.....	9901
Rehm, G.....	339	Golonski, L.....	2345	Lynch, J.....	5113	Houser, E.....	8019	Dreischarf, F.....	10459
Miela, W.....	649	Alver, N.....	2943	Stensloff, C.....	5169	Grote, A.....	8193	Dorsen, E.....	10473
Boehm, O.....	911	Andrews, M.....	3663	Buthman, W.....	5179	Meske, P.....	8315	Cubycheek, W.....	11787
Fernitz, V.....	1963	Anderson, A.....	4377	Newberg, C.....	5353	Gebhardt, J.....	9485	Harris, J.....	13353
		Berkel, P.....	5083	Engler, A.....	5407				

Bus Operators

Lutes, J.....	8244	Boggs, J.....	11412	Prussatt, H.....	11966	Wolke, W.....	12521
---------------	------	---------------	-------	------------------	-------	---------------	-------

TWO YEAR MEN

Conductors

Ziehm, H.....	220	Flanagan, O.....	1492	Wegener, L.....	3966	Fortman, G.....	6010	Bejrowski, S.....	11340
Krueger, P.....	302	Golombiewski, L.....	2158	Wiesen, W.....	5506	Fischer, H.....	6306	Lund, H.....	11504
				Rickwald, R.....	5568				

Motormen

Mueller, A.....	499	Kunter, J.....	5039	Gustafson, J.....	5667	Engenfeldt, C.....	7601	Flintz, O.....	12455
Gunderson, O.....	1423	Bennett, J.....	5209	Moozt, N.....	7425	Coppersmith, L.....	9409		

Bus Operators

Barcal, J.....	4155	Harte, J.....	6558	Bukowski, J.....	10659	Offerman, W.....	11570
----------------	------	---------------	------	------------------	-------	------------------	-------

THREE YEAR MEN

Conductors

Larsen, C.....	2638	Anderson, H., No. 1.....	5618	Wegner, W.....	5848	Wenzel, F.....	8116	Gillispie, T.....	10202
Mors, E.....	3706			Shilvoek, B.....	7786	Anderson, A., No. 2.....	9514	Panschow, H.....	11184
								Koziarz, H.....	11496
								Podraza, J.....	13582

Motormen

Cosman, L.....	2105	Klippstein, G.....	10687	Larsen, C.....	11357
----------------	------	--------------------	-------	----------------	-------

FOUR YEAR MEN

Conductors

Harrison, R.....	3960	Anderson, A., No. 1.....	5594	Weber, E.....	5598	Lenz, O.....	5674	McDermott, P.....	6604
------------------	------	-----------------------------	------	---------------	------	--------------	------	-------------------	------

Motormen

Harding, S.....	6195	Liss, J.....	8515	Lund, A.....	10309	Eulberg, F.....	11227
-----------------	------	--------------	------	--------------	-------	-----------------	-------

FIVE YEAR MEN

Conductors

Name	Badge	Name	Badge	Name	Badge	Name	Badge	Name	Badge
Latham, S.....	4790	Versema, R.....	10668	Hauserman, P.....	12160				

SIX YEAR MEN

Conductors

Reimsdyk, R.....	3990	Hennelly, R.....	5406	Wichman, G.....	12770
------------------	------	------------------	------	-----------------	-------

Motormen

Seelenbinder, P. 389	Natzke, G.....	10197
----------------------	----------------	-------

SEVEN YEAR MEN

Conductors

Ewert, E.....	4962	Hintze, E.....	5142	Schmidt, W.....	5534
---------------	------	----------------	------	-----------------	------

Motormen

Bender, J.....	4549	Glanders, H.....	5337	Studt, G.....	6043	Poltrock, W.....	7789	Bluhm, E.....	9971
Lockwood, R.....	5259								

EIGHT YEAR MEN

Conductors

McManmon, J... 1550	Wegner, O.....	3840	Crumberland, E. 6062	Miller, E.....	6362	Bojan, G.....	14186
Lechner, E.....	2562						

Motormen

Plotz, L.....	5167	Kemer, A.....	5191
---------------	------	---------------	------

NINE YEAR MEN

Conductors

Norcott, C.....	586	Peterson, A.,		Gabel, O.....	5626	Slawson, R.....	7378	Jacobsen, F.....	9826
Sladek, O.....	752	No. 1.....	4806	Kalas, J.....	5636	Benson, B.....	7978	Priebe, A.....	9968
Barth, H.....	1708	Sander, W.....	5416	Cupsky, J.....	5644	Eckman, J.,		Toman, G.....	11356
Pahnke, F.....	1900	Guntzberger, E. 5540		Fischer, R.....	5684	No. 1.....	8166	Schultz, L.....	11550
O'Keefe, J.....	3580	Korman, T.....	5548	Svenson, C.....	5702	Torgersen, H.....	8902	Wierig, W.....	12372
Rich, E.....	4026	Olson, J.....	5588	Potempa, P.....	6108	Coleman, M.....	9138	Wirth, H.....	13570
Brietzka, H.....	4474	Walker, G.....	5592	McNellis, J.....	7194	Kerrigan, M.....	9700	Erickson, H.....	14572
Wall, M.....	4782	Dever, T.....	5614						

Motormen

Cory, E.....	1719	Quetschke, L.....	4293	Mundall, N.....	5067	Miloyevich, R.. 5331	Hegarty, P.....	8669
--------------	------	-------------------	------	-----------------	------	----------------------	-----------------	------

DIVISION No. 10—NOBLE

ONE YEAR MEN

Conductors

Quealy, P.....	970	Comiskey, J.....	3776	Claus, F.....	5268	Neumann, B.....	9156	Guido, S.....	12798
Casper, J.....	1008	Harazin, J.....	4390	Sexton, M.....	5492	Hayes, D.....	9268	Schultz, W.....	12866
Thurkow, B.....	1082	Corkle, T.....	4404	Arendt, G.....	8122	Kobus, S.....	11228	Vesperman, W..	13654
Griebel, H.....	1198	Nygaard, A.....	4676	Max, G.....	8266	Fisher, J.....	11236	Thurkow, E.....	14156
		Sviontek, A.....	4922	Rinnac, F.....	8546	Styles, R.....	12230		

Motormen

Bosak, P.....	903	Barbrick, E.....	2113	Tworek, C.....	3841	Pemrick, M.....	8177	Hoffman, J.....	9777
Dalton, J.....	1775	Hill, J.....	2287	Nebels, N.....	4907	McHale, E.....	9059	Hammersmith, J.	9925
McLaughlin, E. 1943		Condl, J.....	3435	Zmich, S.....	7359	Szczerkowski, J. 9245		Rohr, W.....	10409

TWO YEAR MEN

Conductors

Larisey, D.....	3354	Schultz, S.....	6688	Caplinger, J.....	8146	Kupeczyk, E.....	10402	Schroder, J.....	11960
Zick, F.....	4260	Lehman, H.....	7150	Smith, T.....	8260	Patt, G.....	10430	Anderson, R.....	12142
Lenz, C.....	5558	Kuntz, F.....	8142	Moews, W.....	8956	Rammel, J.....	10846	Johnson, G.....	13976

Motormen

Clausen, C.....	7617	O'Donnell, P.....	8701	Botteher, G.....	9257	Sesko, W.....	10703	Mrugacz, W.....	11459
Redman, H.....	7917	O'Shea, D.....	8975						

THREE YEAR MEN

Conductors

Kenar, J.....	2298	Carlson, A.,		Cook, J.....	8096	Thurkow, E.....	14156
Wiedemann, E.. 4590		No. 1.....	7668				

Motormen

Mick, H.....	1547	Henderson, W.. 4713		Brzezinski, J.... 5555		Milka, L.....	8843	Ipeczynski, A....	11101
Iowinski, J.....	3169	Jennings, J.....	4919	Mack, H.....	8735	Kennedy, M.....	9517	Metz, H.....	13401

FOUR YEAR MEN

Conductors

Name	Badge	Name	Badge	Name	Badge	Name	Badge	Name	Badge
Clark, J.	1514	Harders, C.	4842	Landis, E.	5646				

Motormen

Knuth, L.	8165	Miller, F.	10455	Mingo, A.	11081
-----------	------	------------	-------	-----------	-------

FIVE YEAR MEN

Conductors

Stevens, E.	1712	Pedersen, H.	3180
-------------	------	--------------	------

Motormen

SIX YEAR MEN

Conductors

Kelleher, C.	4420	Smith, R.	6130	Schultz, C.	9342	Lohse, F.	13992
--------------	------	-----------	------	-------------	------	-----------	-------

Motormen

Fiezel, G.	3533	McEvelly, J.	6001	Kuntz, L.	9169	Szymkowiak, V.	12703
------------	------	--------------	------	-----------	------	----------------	-------

SEVEN YEAR MEN

Conductors

Rohr, J.	494	Porcell, A.	2822	Spiegel, L.	5020	Deckert, G.	6810	Wilewski, S.	7316
Klinicke, J.	638								

Motormen

Klick, H.	8161	Ryan, S.	8725	Kupper, P.	11447
-----------	------	----------	------	------------	-------

EIGHT YEAR MEN

Conductors

Spajda, F.	2392	Toney, W.	5878	Kugelberg, H.	7130	Miller, C.	7236	Bosworth, E.	14390
------------	------	-----------	------	---------------	------	------------	------	--------------	-------

Motormen

Micheals, B.	1659	Wendt, H.	8897
--------------	------	-----------	------

NINE YEAR MEN

Conductors

Sanborn, W.	116	O'Connell, E.	3610	Hammer, F.	8228	Waters, V.	9164	Daluga, R.	9334
Kniat, L.	2840	Totzke, P.	5892	Czyrlanis, S.	8350	Shaluskay, C.	9312	Knoll, W.	9450
Fawlak, L.	3070	Beckers, J.	8022						

Motormen

Kledzik, J.	4609	Dreis, C.	6973	Bushka, J.	10771
-------------	------	-----------	------	------------	-------

DIVISION No. 11—LINCOLN

ONE YEAR MEN

Conductors

Carpenter, C.	680	Birk, R. J.	2760	Thornton, V.	6414	Lee, W.	8942	Morris, E.	11300
Kaczmarek, E.	710	Romberg, S. W.	2832	Hahn, P.	6466	Mayes, F.	9498	Burke, H. J.	11352
Bruhn, W.	834	Gaeding, P.	3220	Hamm, J.	6562	Lerch, F.	9650	Klein, J. G.	
Hickey, F.	858	Joyce, M.	3886	Christensen, W.	6874	Glass, P.	9820	No. 2	13224
Smyth, J.	1456	Soch, P.	4442	Oswald, C.	6918	Tice, R.	10146	Peterson, F. L.	13232
Crome, G.	1562	Carabine, T.	6124	Lind, J.	6930	Dresbach, R.	10260	Falconer, P.	13328
Joyce, P.	2198	Keevil, A.	6236	Behnke, F.	7088	Golden, A.	10582	Zieman, H.	13642
Kuebler, J.	2364	Beck, A.	6344	Carmichael, F.	8528				

Motormen

Klein, M.	803	Johnson, O. F., No. 2	4011	Johnson, W., No. 1	6763	Frantz, H.	8191	Cook, E.	9863
Sandberg, C.	1019	Ervin, L.	5511	Cassidy, J.	6849	Fredd, M.	9097	Barrett, T.	10613
Dunne, W.	2371	Pedersen, T.	6265	Jacobs, C.	7167	Colomb, L.	9265	Nielsen, M.	10983
Matzelle, R.	2459	Powers, M.	6503	Earley, F.	7717	Larger, L.	9415	Crusoe, J.	11089
Slump, M.	2559	Mindak, G.	6599	Schormack, P.	7803	Hennessy, T.	9671	Muhs, F.	11763
						Mulligan, M.	9745	Golterman, W.	11857

TWO YEAR MEN

Conductors

Kavanagh, P.	466	Mitchell, C.	5252	Rhind, T.	7218	Jacobs, J. E.	10176	Wilcox, H.	10984
Glueck, G.	1080	Slattery, J.	5390	Kolberg, A.	9020	Geimer, F.	10360	Keeshan, J.	11112
Gilson, M. A.	3742	Peterson, H.	5810	Waincott, C.	9724	Anderson, E. J., No. 1	10678	Philbin, R.	11978
Baske, F.	4326	Thorson, N.	6354	Mulhern, J.	9888	No. 1	10678	Brown, C.	12410
Kelsey, A.	5204	Beelow, A.	7084	Benson, A.	9996	Klan, E.	10754		

Motormen

Name	Badge	Name	Badge	Name	Badge	Name	Badge	Name	Badge
Meyers, C.	2325	Bauman, E.	5007	Will, E.	6631	Daum, G.	9545	O'Shea, J.	11947
Karlovich, P.	3127	Meyer, H.	5631	Andries, P.	6815	Stephens, M.	9961		
Peterson, C. A.	3145	Manthie, T.	5939	Leslie, R.	7863	Presser, J. G.	10011		

THREE YEAR MEN

Conductors

Simon, R.	228	Hennessy, M.	3294	Schwenkler, J.	8818	Anderson,	Nelsen, J.	14030
Hamburg, A.	2414	Reedy, G.	6500	Studinske, B.	9668	E. R. No. 2.	11676	
Getzen, P.	2540	Mix, G.	6830	Muenchen, N.	10692	Schmoeller, J. P.	13434	

Motormen

Paschke, W.	3557	Gavin, M.	8027	Hagedorn, E.	13079	Heinbrock, B.	13285
Carlson, S. E., No. 1.	7471	Blixt, T.	9923				
		Duffy, M.	10365				

FOUR YEAR MEN

Conductors

Geweke, L.	726	Toale, J.	6286	McAndrews, M.	9374	Harwood, E.	10134	Elie, A.	13476
Boelke, O.	4588	McPhee, T.	7354	Hansen, S.	10022	Uhl, H.	10188		

Motormen

Resch, C.	4573	Holderness, W.	6275	Bronke, F.	10243	Wilmes, J.	12379	Coughlin, P.	12591
Wischwch, F.	5517	Lavelle, P.	6563						

FIVE YEAR MEN

Conductors

Lynch, E.	6150	Kavanagh, T.	6432	Harrington, P.	7280	Meyers, C. V.	8470	Laueremann, J.	9726
Becker, E.	6280								

Motormen

Peterson, M.	5885	Larson, C.	7559	Langerock, J.	8977	Mathiesen, T.	10167	Adams, F.	13159
--------------	------	------------	------	---------------	------	---------------	-------	-----------	-------

SIX YEAR MEN

Conductors

Bula, W.	5808	Tenney, J.	6634	Spengler, E.	9044	Broberg, F. E.	11324	Margaron, C.	14394
Giroux, G.	5874	Anton, N.	8334						

Motormen

Tierney, J.	365	Peske, A.	6781	Hite, E.	7987	Nyquist, C.	8587	Schlenkert, A.	11985
Ryan, M.	5911	Sommer, A.	6971	Miles, M.	8553	Dinschel, N.	8913	Burch, L.	12163

SEVEN YEAR MEN

Conductors

Gaughan, T.	674	Brunnelli, J.	5344	Sperthman, H.	6658	Collins, J. W., No. 2.	8578	Hammerlund, C.	12406
Love, T.	1188	Sullivan, F.	5660	Cooney, J.	6672	Rockwell, J.	9108		
Faul, G.	4636	Mainock, H.	6046	Newton, C.	6976	Moriarity, J.	12294		
Bailey, G.	5242	Olsen, W.	6600	Bieschke, F.	7430				

Motormen

Rich, L.	5867	Frankt, C.	5971	DeLaBarre, W.	7675	Falls, E.	10739
----------	------	------------	------	---------------	------	-----------	-------

EIGHT YEAR MEN

Conductors

Burke, J., No. 1	2510	Mink, W.	3428	Thomas, L.	4628	Weber, M.	6652	Schatz, L.	12718
Richards, M.	2902	Reinhart, J.	3666	Ramsey, L.	6316	Naughton, J.	8872	Everts, J. B.	13530
Killen, P.	3088								

Motormen

Gliffe, A.	10285
------------	-------

NINE YEAR MEN

Conductors

Ternandt, W.	2096	Wingblade, A.	5058	Dillon, T.	6368	Gleeman, G.	6904	Matschke, C.	9896
Wagner, A.	2672	Feldhahn, H.	5078	Beeman, W.	6400	McHugh, T.	7252	Kolb, G.	10690
McFadden, P.	2678	Smith, F.	5320	McGarry, J.	6406	Klein, J., No. 1	7426	Greenfield, T.	10766
Johnston, D.	2680	Rocklitz, F.	5408	Halverson, A.	6464	Scanlan, A.	7516	Anderson, J.	10970
Curtis, E.	3066	Metzger, I.	5792	Rasmussen, S.	6516	Berry, P.	7700	Harrity, M.	11358
Peterson, L.	3400	Collins, J., No. 1	6030	McManus, J.	6618	May, G.	7944	Pherson, A.	11404
Nielsen, J.	3456	Corcoran, E.	6074	White, F.	6624	Althaler, C.	7950	Young, B.	11782
Deanes, M.	3658	Keane, P.	6268	Reese, C.	6700	Moran, M.	8006	Roth, G.	11996
Granahan, A.	3772	Callard, C.	6270	Fissneck, N.	6704	Nelson, O. H.	8040	Mertens, F.	12306
Pearlstein, J.	4666	McDowell, C.	6274	McFadden, M.	6716	Spitznagel, J.	8644	Madock, F.	13160
Moser, O.	4774	Lyons, C.	6350	Bartos, W.	6866	Deering, A.	9234	Rausch, G.	13488
Stock, C.	4794			Hoellen, G.	6868	Schoenfeldt, P.	9468		

Motormen

Ness, E.	4455	McCaffrey, C.	5655	Flanders, F.	5897	Meersman, A.	6543	Simon, H. E.	7673
Schnell, F.	4895	Price, J.	5699	Weber, H.	6483	Lietzau, A.	6771	Cain, R.	8017

DIVISION No. 12—LIMITS

ONE YEAR MEN

Conductors

Name	Badge	Name	Badge	Name	Badge	Name	Badge	Name	Badge
Eatinger, L.	600	Rooney, B.	3824	Langan, W.	5590	Bolger, M.	8376	Schwarzer, W.	11400
Maloney, J.	986	Fret, T. C.	3856	May, G.	5812	Smith, V.	8802	Lewand, A.	12014
Wilhelm, J.	1066	Austin, W.	4054	McKinstry, C.	6852	Schott, J.	9596	Fennessy, C.	13378
Dever, P. J.	1810	Buckley, J.	4618	Turkington, F.	7480	Jouron, A.	10512	Leidig, P.	13460
Boldt, H.	1948	Hanlon, R.	4748	Benson, E.	7530	Solberg, J.	10790	Stawiry, L.	13506
Soch, E.	2500	Faber, F.	4780	Smith, C.	7708	Hall, H.	10926	McNally, M.	13860
Hubers, H.	2632	Ziekert, E.	4916	Sulhoff, A.	7762	Gaynor, R. E.	10978	Dymon, S.	14216
Rubey, J.	2768	Samsing, P.	5028	Briggs, H.	8048	Gallagher, A. J.	11280	Brooks, J.	14320
Dunn, W.	2954	Heitman, J.	5144	Lambert, E.	8272				

Motormen

Anderson, J. L.	397	Kastner, C.	6661	Roos, G.	8279	Kelly, E.	9885	Hodgkinson, H.	11833
Holman, W.	1371	Palczynski, M.	7343	Hausler, E.	8465	Albany, W.	9987	Russcher, J.	12253
Godelman, W.	3389	Luczak, S.	7357	O'Connor, F.		Kornacki, G.	10701	Henneberg, C.	12437
Peterson, A.	4123	O'Connor, F.		No. 1.	8627	Stensloff, F.	11071	Leahy, J.	12767
Madden, T.	4623	No. 2.	8029	Curry, P.	8693	Morrison, J. H.	11143	Ullestad, A.	13345
Swanson, P.	4755	Michaelis, W.	8277	Stade, W.	8705	Cobb, C. E.	11279		
Fadour, J.	5379								

TWO YEAR MEN

Conductors

Heinson, A.	1768	Blume, H.	7008	Regulski, E.	7996	Ritter, C. E.	11514	Anderson, H.,	
Carrion, H.	2604	Johnson, O.,		Bunish, V.	8268	Kanabay, E.	12586	No. 2.	13396
Richardson, A.	3128	No. 2.	7140	Giese, R. A.	8960	Hendricks, L.	12750	Reiss, M.	13546
Grisch, T.	3364	McCarthy, F.	7594	Traut, P.	9830	Fitzgerald, J.	13182	Ozburn, O. K.	13766
Strouse, C.	6312	Duggan, J.	7754	Gord, E.	10520	Wandrey, R.	13310	Dillon, A.	13880

Motormen

Rapp, A.	983	Healy, M.	4595	Lidberg, J.	9087	Hawkins, E.	10919	Christenson, E.	12109
Healy, T.	2125	Dimond, T.	5375	Fitzgerald, T.	9685	Schalke, W.	10989		
Struwe, M.	2663	Emberg, E.	5589	O'Connor, J. W.	10021	Roberts, W.	11033		

THREE YEAR MEN

Conductors

Gallagher, C.	2880	Martin, G.	6992	Leicht, G.	8746	Johnson, R.	12740	Samp, O.	14298
Butlman, C.	4130	Johnson, E.	7930	Neuffer, E.	12184	Schmidt, L.	12774		

Motormen

Larson, C.	2189	Greenwald, J.	6899	Werthe, F.	7877	Carlson, J. A.	11563	Mullane, J.	11979
McManus, J.	4769	Carmody, P.	7689	Tengler, C.	9561	Wenderski, F.	11699		

FOUR YEAR MEN

Conductors

Gulick, R.	428	Clay, W.	8574	Karasek, J.	8576	Dunphy, P.	9072	Jordan, P.	11452
------------	-----	----------	------	-------------	------	------------	------	------------	-------

Motormen

Shea, W.	107	Thorsdale, N.	1555	Sherden, C.	5441	Davis, J.	7179	Swanson, A.	9645
Mikulicic, R.	245								

FIVE YEAR MEN

Conductors

Mueller, F.	1580	Howley, P.	9604	Schabell, A.	11072	Noffke, W.	12990	Kosloske, J.	13492
-------------	------	------------	------	--------------	-------	------------	-------	--------------	-------

Motorman

Rieschel, J. 13121

SIX YEAR MEN

Conductors

Holub, E.	144	Wright, A.	1792	Mueller, W.	6506	Northup, A.	7938	Barnett, E.	10530
Dwyer, J.	432	Borgarding, C.	6168	Roche, M.	7004	Barker, G.	8522	Urban, J.	12658

Motormen

Siebert, H.	6455	Elberson, P.	9799
-------------	------	--------------	------

SEVEN YEAR MEN

Conductors

Miller, H.	8432	Ginter, W.	9402	O'Malley, J.	9682	Cromie, W.	12094	Weise, A. J.	12752
Nelson, C. B.	9070	Luttmer, W.	9486	Knispel, F.	10784				

Motormen

Henry, P.	1099	Pelland, R.	1541	Bartlett, J.	8893
-----------	------	-------------	------	--------------	------

EIGHT YEAR MEN

Conductors

Name	Badge	Name	Badge	Name	Badge	Name	Badge	Name	Badge
Huntzicker, E.	1048	Clarence, L.	5128	Henry, H. L.	6924	Pinzke, A. P.	7872	Brim, W.	13636
Hale, F.	3314	Newberg, J.	5966	Kane, W. J.	7118				

Motormen

Weren, C.	6615	Benter, P.	11997
----------------	------	-----------------	-------

NINE YEAR MEN

Conductors

Salmon, A. J.	270	Duprey, E.	3780	Tansey, P.	5652	Wilberschied, E.	8202	Conti, P. B.	11826
Gallagher, J.	362	McAndrews, T.	4306	Johnson, F.	6468	Beckers, L.	8434	Briesch, J.	12512
Ward, C. H.	1120	Amann, G.	4448	Carlson, P. A.	6520	Brounstein, H.	9272	Keane, W.	13218
Cooke, T. V.	2730	Stadler, A.	4844	Kempe, F. W.	7018	O'Connor, P. J.	9518	Anderson, H.	
Breinig, A.	2774	Christie, A.	4964	Arndt, O. J.	7458	McHugh, P.	10488	No. 1.	13862
						Hartowicz, A.	11500	Sundquist, H.	14314

Motormen

Coyne, M.	5553	Zeches, P.	6977	Jacobs, G.	8555	Lefeher, E.	9099	Eberlien, E.	12305
----------------	------	-----------------	------	-----------------	------	------------------	------	-------------------	-------

DIVISION No. 12—DEVON

ONE YEAR MEN

Conductors

Jedlicka, J.	580	Loughran, P.	5224	Frejd, F.	7154	Stephens, G.	9776	Susralski, J.	11874
Schellenberg, J.	596	Zech, W.	5238	McHugh, J.	7258	Patrick, R.	9796	Conway, J.	12356
Baro, J.	1924	Hanly, E.	5386	Rhind, W.	7284	Todd, E.	9822	Perry, J.	12504
Muir, A.	2448	Matern, R.	5700	Ketter, H.	7356	Carroll, J.	9930	Corrigan, R.	12556
Hull, M.	3022	Nisson, I.	5916	Connolly, E.	7584	Machesney, W.	9958	Kundert, F.	12642
Johanson, J.	3040	O'Brien, E.	6004	Klein, A.	7710	Hoppe, T.	10694	Bjornson, F.	13414
Lyngass, I.	3640	Larson, C., No. 1		Mueller, N.	7782	Rogers, J.	10730	Hengl, R.	13738
Kessner, J.	3894		6128	Cox, G.	7850	Johnson, W.	10750	Lee, J.	13768
Bollinger, A.	4158	O'Connor, J.	6164	Tarrant, S.	8494	Johnson, A., No. 3.	10818	Thayer, D.	13882
Hartnett, T.	4410	Cunningham, J., No. 1.	6712	Sabey, A.	8936	Cass, H.	10944	McDonnell, M.	13892
Scheel, E.	4466	Gillispie, J.	6724	Madine, T.	9014	Huffman, P.	9132	Hoglund, G.	14150
Hessling, F.	4534	O'Malley, J.	6798	Huffman, P.	9132	Joll, L.	9394	York, D.	14170
Heirty, P.	4616	McDonough, H.	7028	Duke, M.	9696			Moran, H.	14304
Burdick, J.	5034							Morrison, D.	14402
								Kneafsey, M.	14980

Motormen

Gutzmer, C.	207	Lindberg, O.	3275	Nelson, E.	5403	Rolewitz, S.	10015	Kern, L.	11809
Bogstrom, J.	263	Heidelmier, G.	3459	Anders, H.	6889	Windelborn, A.	10469	Finnegan, J.	11969
Henne, C.	1407	Ball, H.	3485	Gordon, M.	7003	Peterson, E., No. 1.	10607	Droucho, J.	11995
Devane, T.	1801	Paulson, N.	3871	McCauley, J.	7025	O'Neill, J.	10697	Knadle, A.	12167
Edmons, L.	1917	Traxel, R.	4275	Noren, C.	7027	Railla, J.	10719	Harmon, J.	12697
Leeper, B.	2933	Cooney, M.	4633	Durkin, T.	7069	Fisher, G.	7595	Eberle, C.	12899
Wilson, H., No. 1	3135	Galvin, M.	5121	White, M.	8935	White, M.	8935	Swanson, W., No. 1.	12985
		Hess, R.	5263	Fiesterman, J.	9007	O'Connor, B.	11149	Esterly, H.	13565

TWO YEAR MEN

Conductors

Washa, W.	420	Schwall, N.	5292	Malmer, B.	7440	Boyle, P., No. 1	9398	Merkel, A.	12296
Bradley, W.	442	Carlson, C.	6398	Martin, P.	7646	Gross, A.	9898	Gunderson, O.	12608
Shaw, J.	768	Kratt, J.	6472	Blaser, J.	8336	Devine, T.	10072	Stasek, E.	12932
Sladek, G.	1014	Peterson, M.	6632	Karl, J.	8454	Kenny, J.	10186	Reimer, H.	13042
McDonnell, T.	1622	McGreavy, J.	6654	Piche, W.	8588	Doherty, P.	10614	VanDenEeden, J.	13190
Holohan, J.	1646	Arend, N.	6760	Steigler, M.	8692	Ruby, J.	11488	Schmeltzer, W.	13374
Davis, J.	1758	Suffel, J.	6790	McCormick, P.	8822	Lange, J.	12290		
Asp, A.	4892	Joyce, M.	7306	Malone, T.	9000				

Motormen

Marsh, G.	393	Faulkner, E.	4865	Nicodemus, J.	6367	Lamm, F.	8541	Krause, W.	11725
Albee, A.	1245	Pratt, H.	4995	Walsh, E.	6697	McNamara, D.	8871	Lesko, L.	12151
Boeller, H.	1855	Manning, L.	5671	Hildebrandt, O.	6983	Brown, V.	10413	Hager, D.	12547
Hunter, W.	2753	Leaf, C.	6137	Farrell, M.	7063	Paice, L.	10881	McGuinness, T.	13135
Wolff, R.	3397	Hahm, E.	6209	Moore, J.	7681	Larson, A.	10993	Nelson, L.	13245
Schroeder, H.	4305	King, M.	6279	Jensen, J.	8205				

THREE YEAR MEN

Conductors

Seidel, D.	266	Hoban, J., No. 2	3390	Munster, T.	5006	Rigby, W.	7108	Tedrick, F.	12532
Watson, G.	914	Cook, P.	3598	Deasey, P.	5092	Donnelly, M.	8042	Jepsen, H.	12852
Widmont, A.	1244	McMahon, J.	4092	Harrington, W.	5192	Johnston, C.	8436	Peterson, H.	13186
May, T.	1290	Kucfner, G.	4318	Koester, H.	5330	Hendricks, F.	9460	Burm, A.	13210
Malone, M.	2518	Clutts, J.	4528	Baston, E.	6240	McHugh, M.	9496	Barrett, M.	13652
Hermanson, C.	2696	Bennett, J.	4576	Malone, J.	6348	Quinn, E.	11090	Gallagher, P.	13952
Boyle, W.	3232	Nicholson, T.	4620	Geach, B.	6914	Johnson, M.	11382	Harrington, J.	14476
				Prentiss, C.	6940	Williams, C.	12170	Gaertner, A.	14982

Motormen

Name	Badge	Name	Badge	Name	Badge	Name	Badge	Name	Badge
Swiontek, E.....	1069	Rowland, E.....	3641	Proessel, P.....	4913	Diver, T.....	6699	Gillespie, D.....	10731
Gannon, P.....	2171	Doran, J.....	4417	Peterson, E., No. 2.....	6629	Wallace, L.....	8359	Steiger, G.....	11255
Fahey, J., No. 2	2221	Kampe, J.....	4679			Higgins, J.....	9515	Jarr, O.....	11377
								Knoist, W.....	12969

FOUR YEAR MEN

Conductors

Furlong, J.....	1970	Rohde, F., No. 1	6728	Baker, D.....	10042	Johnson, C.....	11310	Koncar, F.....	12748
Foster, E.....	4418	Green, J.....	7120	Loveless, W.....	10456	Stricker, M.....	11580	Rawls, F.....	14006
Hess, G.....	5318	Roth, H.....	9076	Eckley, B.....	10720	Cregg, J.....	12208	Boyle, P., No.	
Lizars, H.....	5484	McArthur, W.,	9674	Cannon, J.....	10994	Sullivan, J.....	12518	2.....	14076
Roysce, C.....	5850							Baehrend, A.....	14316

Motormen

Schutz, A.....	4321	Gill, M., No. 2..	7651	McKeon, T.....	11113	Pflug, H.....	11197	Natelborg, J.....	11831
Beggins, M.....	6589	Sugrue, M.....	7661						

FIVE YEAR MEN

Conductors

Freisen, P.....	464	O'Brien, M.....	5140	Mochan, P.....	10486	Cunningham, J., No. 2.....	12404	Willis, E.....	13412
Cross, J.....	1038	Neland, C.....	5750	Howard, R.....	10832	Thacher, E.....	12974	Warren, L.....	13456
Burger, O.....	2030	Broderick, J.....	7232						

Motormen

Doyle, J.....	4873	Keough, J.....	5305
---------------	------	----------------	------

SIX YEAR MEN

Conductors

Hicks, C.....	632	Wright, O.....	3674	Gallimore, R.....	5036	Vaughn, A.....	7986	Selof, E.....	11366
Voss, C.....	760	Henderson, H.....	3800	Naylor, W.....	6590	Philbin, A.....	8286	Hagstrom, P.....	13602
Donnelly, G.....	2252	Nelson, B.....	3974	Lennartz, G.....	6812	Gustafson, H.....	10642	Wilhelm, J.....	14086
Haberstick, F.....	2798	Quist, C.....	4312	Maloney, D.....	7608	Holsted, H.....	11202	McKenzie, L.....	14098

Motormen

Wilson, C.....	573	Drury, P.....	2455	Paulson, H.....	3469	Carlson, O.....	4373	Burke, T., No. 1	8361
----------------	-----	---------------	------	-----------------	------	-----------------	------	------------------	------

SEVEN YEAR MEN

Conductors

Lynch, T.....	212	Goedert, N.....	3492	Lonquist, F.....	6068	Rice, J.....	9364	Stawiry, E.....	12360
Ledenbach, A.....	500	Sullivan, M.....	4346	Sheridan, M.....	6826	O'Gara, D.....	9846	Chartrand, C.....	13468
Doherty, M.....	764	Paschke, E.....	4356	Manson, G.....	6880	Hartigan, R.....	10096	Warren, N.....	14128
Altpeter, A.....	1062	Seuffy, J.....	5118	Harvey, W.....	7092	Wrenn, J.....	11238	Loftus, W.....	14324
Johnson, A., No. 2.....	3346	Bolty, R.....	5302	Freedman, C.....	9082	Titsworth, L.....	12032	Loth, E.....	14430
		Horan, M.....	6012						

Motormen

Waggoner, W.....	3585	Ereiter, C.....	3851	Stoll, E.....	7043	Walsh, P., No. 2.....	11401	Lubner, A.....	11621
Gill, M., No. 1..	3763	Gustafson, D.....	5157	Grady, F.....	11319				

EIGHT YEAR MEN

Conductors

Boyington, S.....	1548	Thomson, P.....	4846	McKiel, C.....	6246	Fiege, M.....	7290	Lyons, T.....	11074
Elmer, C.....	2408	Joerger, C.....	5412	Peterson, A.....	6740	Schwartz, J.....	7358	Touhy, T.....	11602
McDevitt, W.....	4202	Staschick, F.....	6024	Klein, L.....	7144	Smith, C.....	10586	Peters, I.....	13722

Motorman

Kinsch, H.....	11003
----------------	-------

NINE YEAR MEN

Conductors

Schuler, G.....	640	Glover, J.....	4532	Devaney, P.....	5962	Iler, V.....	7164	Devane, J.....	10106
Size, M.....	948	Quitno, H.....	4824	Dahl, O.....	6220	Karnett, L.....	7330	McHale, F.....	11192
Horrigan, T.....	1476	Burr, J.....	4854	Toepper, F.....	6228	Johnson, H., No. 1.....	7438	Hoffstadt, H.....	11660
Flanderka, P.....	1990	Knoess, C.....	4936	Larson, L.....	6250	Berckes, R.....	7536	Weir, T.....	12976
Krughoff, J.....	2734	Storms, G.....	5070	Martin, L.....	6366	Taylor, T.....	8708	Heraty, E.....	13260
Buhlman, F.....	3798	Mosiman, F.....	5294	Marks, J.....	6548	Kendricks, O.....	9538	Calderwood, M.	13392
Rhode, F., No. 2	4120	Hetzl, P.....	5322	Egan, J.....	6842	O'Gara, J.....	9802	Welby, C.....	14166
O'Neill, T.....	4128	Manske, R.....	5914	Cody, W.....	7072			Christensen, L.....	14566
Beach, C.....	4460	McCurdy, J.....	5918	Pohlman, W.....	7102				

Motormen

Hyland, J.....	4947	Rademacher, G.	5063	Gloede, A.....	6981	Lischke, J.....	8431	Lynn, M.....	13451
----------------	------	----------------	------	----------------	------	-----------------	------	--------------	-------



NO FATALITIES IN TRACK AND ROADWAY

By exercise of care in guarding men working in the streets, not a single man was lost in this department last year. The department also had a clear record on eye injuries, no eyes having been lost during the year, although 7 goggles were smashed.