

Surface Service

• MAGAZINE •

VOLUME 15

APRIL

1938

NUMBER 1



ACCIDENT PREVENTION NUMBER

CONGRATULATIONS FROM SUPERINTENDENT HALL

To Chicago Surface Lines Trainmen:

While the accident totals for city, state and nation are constantly increasing, the decrease recorded through the accident prevention practices of Chicago Surface Lines trainmen is especially noteworthy.

The operating force is to be highly commended on the fine showing made during the last fiscal year.

There were more automotive vehicles in the streets in this period than ever before in the history of Chicago. More car and bus miles were operated than during the previous year.

In spite of these facts, the report for the year shows a decrease of 1.4 per cent in accidents.

New names were added to the list of men who had no chargeable accidents during the year. That list—an Honor Roll in itself—now carries the names of 5,099 trainmen. These men are especially to be commended.

Accident prevention is important to the public and to the employes. It has an economic bearing of great importance. Its greatest value, however, is from a humanitarian standpoint. Every life that is saved, every person who avoids serious injury because of greater care on the part of Surface Lines trainmen is of far greater value to the community than any monetary saving.

Commendable though the record is, it again emphasizes the constant need for care on the part of every employe. I earnestly hope that Surface Lines men will continue to exercise the highest degree of caution at all times and under all conditions.

W. A. HALL,

Superintendent of Transportation.

Surface Service Magazine

A Monthly Publication by and for Chicago Surface Lines Employees

VOL. 15

APRIL, 1938

No. 1

Frank Statement By Mr. Richardson

President Explains Situation Confronting the Surface
Lines Because of Economic Conditions

*The following statement by President Guy A. Richardson
is of vital concern to every employee.—EDITOR*

TO ALL EMPLOYEES:

The condition confronting the Chicago Surface Lines is, in many respects, the most serious encountered by this organization in many years. The members of the organization, who are to be commended for the loyalty and intelligence with which they have met problems in the past, are entitled to know just what we are up against today, and I want to explain the situation as clearly as possible.

The Chicago Surface Lines has a splendid record of achievement in the past. In the last annual report, part of which was reprinted in the March issue of *SURFACE SERVICE MAGAZINE*, there was a review of 11 years under court receivership which told of the achievements in the face of adverse conditions. All of us are proud of the fact that we have a going concern, able to pay its way and prepared to forge ahead at an accelerated rate, whenever the enactment of an appropriate city ordinance makes possible the completion of reorganization. And none of us, I am sure, wants anything to interfere with the maintenance of this position.

It now appears, however, that we are in another depression, which already has carried us down to a point near the lows of the previous depression.

Decline Is General

At the beginning of last year earnings were increasing and everyone was optimistic. Wage increases were granted which not only entirely restored the 10 per cent reduction made during the first depression but placed hourly wage rates at the highest in the history of the properties—even higher than in 1922 when there was an 8-cent fare or in 1929 when net earnings were $2\frac{1}{2}$ times greater than last year. Then, in August, a decline in general industrial conditions began and this was immediately reflected in Surface Lines earnings.

Whereas in the first 7 months of the year we had an increase of 2.25 per cent in average daily traffic, in the last 5 months traffic was 2 per cent below the corresponding months of the previous year.

The most disturbing fact is that the decline has been progressive and in the first quarter of this year it has reached alarming proportions. In January there was a loss in gross receipts as compared with January, 1937, amounting to \$170,000. In February there was a decline of \$249,000, or about 6.25 per cent, and we ended March with a loss amounting to \$325,000, or

more than 7 per cent.

In other words, gross receipts are running approximately \$10,000 a day less than at this time last year.

At the same time, the expenses of operation, in spite of economies already effected, remain about as high as they were. Increased wage rates and higher social security taxes resulted in a decrease of 36 per cent in net receipts last year. With an increase of \$300,000 in social security taxes, a total of \$1,200,000 must be expended for that purpose this year.

Unhealthy Condition

The gap between income and outgo is rapidly closing up, creating an unhealthy condition which may easily lead to disaster unless steps are taken at once to effect a better balance.

Unlike a manufacturing concern, the Chicago Surface Lines cannot augment its income by increasing the price of its service, as an immediate increase in the rate of fare is not within our control. Nor can we, or should we, reduce operation to the detriment of adequate service, because we are providing a public necessity and must continue to provide it.

The only effective method of balancing income and expenses left open to us, therefore, is to economize wherever possible in our present operation.

Higher Salaries Cut

One step in this direction was taken on April 1, when the salaries of all employees receiving more than \$300 a month were reduced 10 per cent. These employees were the first to receive a cut in 1932, and were the last to have their salaries restored, in 1937. The amount saved by this cut, however, is but a drop in the bucket, for there are only 62 employees who receive more than \$300 a month. What further steps must be taken are receiving the earnest consideration of the management.

Conditions were much more favorable at the beginning of the depression in 1930 than they are at the beginning of this depression. At that time the Chicago Surface Lines had just experienced its most prosperous year. It had reached its peak in riding for all time in 1929.

In the years that followed, earnings dropped 29 per cent below the peak and then gradually recovered until they were within 20 per cent of the peak.

Not Fully Recovered

The present recession is overtaking us before we have completely recovered. The pay of employees was restored to the level of the peak year, and in most cases above that level, without waiting for full recovery.

For every man employed on the Surface Lines, some one has put in \$10,000 to provide the tools—track, cars, buses, shops, etc.—with which he works. Both capital and labor are essential in any industry. If the industry is to continue in a healthy state, both capital and labor must be paid. Yet, not since 1927 has there been any payment to investors except on the first mortgage bonds.

In the face of the present business recession and existing conditions, however, the big problem is to meet operating expenses and taxes. Capital must continue to do its share by looking to the future for earnings, and employees, on their part, must be willing to make some sacrifice for the good of the industry during what everyone hopes is a temporary condition.

WEEKLY DECREASE IN EARNINGS

January 9 to April 10, 1938,

As Compared With Corresponding Weeks in 1937

Week Ending	Decrease for Week	Per Cent of Decrease	Cumulative Decrease
Jan. 9.....	\$45,399	4.70	\$ 45,399
Jan. 16.....	24,929	2.56	70,328
Jan. 23.....	48,711	4.91	119,039
Jan. 30.....	79,823	7.93	198,862
Feb. 6.....	65,172	6.45	264,034
Feb. 13.....	62,028	6.24	326,062
Feb. 20.....	66,653	6.68	392,715
Feb. 27.....	54,916	5.59	447,631
Mar. 6.....	69,509	6.85	517,140
Mar. 13.....	74,142	7.34	591,282
Mar. 20.....	74,473	7.36	665,755
Mar. 27.....	79,766	7.95	745,521
Apr. 3.....	64,104	6.46	809,625
Apr. 10.....	82,021	8.19	891,646

It is highly important that every employee keep constantly in mind his own responsibility to do what he can to reduce waste and increase earnings. Each individual has a stake in the business.

The men who operate the service, by careful attention to their jobs, by courtesy in contacts with the public, by alertness in stopping for intending passengers and a general attitude indicating to passengers that their patronage is appreciated, can do much to attract new business. In the offices and shops and on the roadway strict attention to duty will save time and money.

The situation we are facing concerns all of us and I hope that, as in the past, the emergency will be met courageously in the true spirit of co-operation and loyalty to the best interests of all.

GUY A. RICHARDSON,
President.

ASHLAND BRIDGE OPENS

New Span Speeds Traffic— Cost \$1,330,000

Traffic is now speeding over a new bridge at Ashland avenue and 26th street which was recently completed at a cost of \$1,330,000.

During the several months necessary for construction a temporary structure carried traffic over the river branch at that point. To accommodate street car passengers during that period tracks and overhead wires were laid on the temporary structure. Laying track on the temporary and removing it to the new, permanent bridge cost the Chicago Surface



New Ashland Avenue Bridge

Lines Track Department \$16,810. Electrical Department officials estimate the electrical work charges for similar operations approximated \$10,000.

The new bridge is 90 feet wide with two roadways, each 28½ feet wide, and two sidewalks, each 10 feet wide. Overall length is 312 feet. The improvement was designed and administered by the Department of Public Works, the Bureau of Engineering and the Division of Bridges.

EMPLOYEES RELIEF FUND

March, 1938

The Surface Lines Employees Relief Committee received 20 applications for relief during the month of March. After investigations were made 12 of these were approved for weekly assistance. There were 33 active cases on the relief rolls at the end of the month, 11 having been removed by death or other causes.

Including the \$18,108 spent during the month of March, a total of \$1,119,551 has been paid out of the Surface Lines Employees Relief Fund for assistance of employees since the organization of the committee.

Thousands Throng Churches

Unprecedented Crowds Attend City's Novenas—Surface Lines
Handles Bulk of Traffic

An impressive religious spectacle and a major traffic problem has greeted Chicagoans in all sections of the city on every Friday of recent weeks.

The unprecedented religious outpouring may be traced to its founder and directing head, Father James R. Keane, O.S.M. Its focal point is at Our Lady of Sorrows Church, 3121 West Jackson boulevard, where Father Keane started the Perpetual Novena to Our Sorrowful Mother on January 8, 1937, and from which he has served as the inspiration, and in many cases the driving force, for similar Novenas in all sections of the city.

A traffic problem has resulted from Novena attendance, in spite of the fact that this is supposed to be the age of cynics, that skepticism is on every hand, and that church attendance has fallen steadily since the war.

Huge throngs wait for hours in lines extending six deep for more than a block in order to attend a Novena. Street cars and every other form of conveyance disgorge thousands for every service, the earliest of which begins before most of Chicago is awake, and the last of which starts at 11 P. M. And there is a service every hour on the hour.

Attendance Near 70,000!

It isn't necessary to guess at the Novena attendance. Experienced traffic checkers on duty from 5 A. M. until 11 P. M. counted Novenites on Friday, March 11. There were 69,142 persons who made the Novena on that date—and that number has grown with each successive Friday, according to the statements of Father Keane.

These huge crowds have necessitated the revision of service out of Kedzie depot. Four streamlined cars, sometimes more, are routed direct to Madison and Austin to serve Novena-goers. Numerous cars of other types are pressed into service and sent over special routes. For some of the larger services as many as six or eight cars load up at the corner of Jackson boulevard and Kedzie.

Appreciation Expressed

"I do appreciate the fact," Father Keane said, "that the Chicago Surface Lines has recognized this traffic problem and has taken special care to solve it by re-routing the new cars and offering quick and adequate transportation service from a point close to the church to those attending the Novena."

The Chicago Park District assigns special policemen to reg-

ulate traffic, the like of which Jackson boulevard has never seen before. Novenites pop out of all forms of conveyance and rush to a place behind the ropes, where the people line up for the next service.

And those Novenites come from all parts of Chicago, from all suburbs far and near, even from adjoining states. For instance, Miss Elizabeth McMahon of Portage, Wisconsin—178 railroad miles from Chicago—travels from her home to the Novena each Friday and Joseph Francis McCarthy regularly flies out from New York.

Father Keane Responsible

Father Keane is wholly responsible for the hold these Novenas have taken on parishioners far and wide. A handsome, alert man of 35, he explains that the Novena is built around the *Via Matris*, or the Stations of the Cross of Our Sorrowful Mother.

"This devotion," he says, "whose prayers are the most beautiful that have ever come from the pen of man, has been a hidden treasure of the Servite Order for hundreds of years. For some unknown reason the lovely devotion was never popularized. Now it is sweeping our city and our nation by storm."

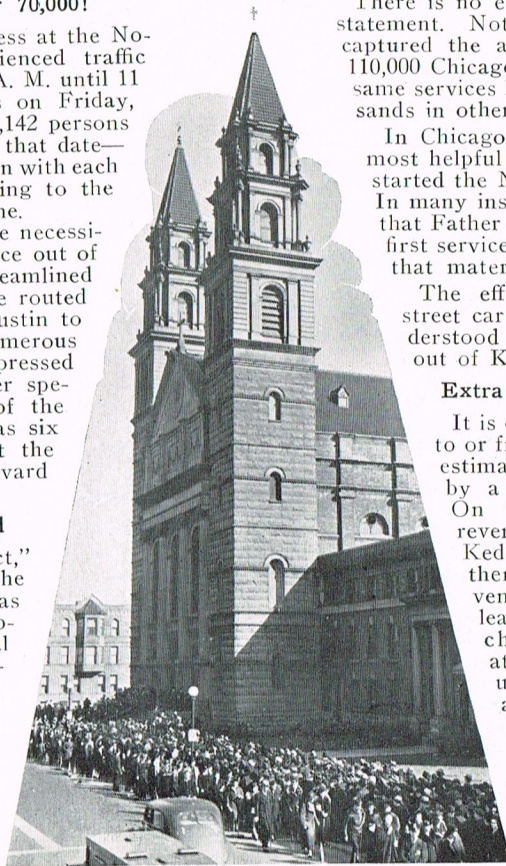
There is no exaggeration in the latter statement. Not only have the Novenas captured the attendance of more than 110,000 Chicagoans each Friday, but the same services have attracted other thousands in other sections of the country.

In Chicago, Father Keane has been most helpful to the pastors who have started the Novenas in their parishes. In many instances the announcement that Father Keane would conduct the first service has been the inducement that materially swelled attendance.

The effect of the Novenas on street car riding can be better understood by watching operation out of Kedzie depot.

Extra Riding Accommodated

It is difficult to trace the riding to or from any one Novena. An estimate can be made, however, by a comparison of receipts. On the basis of additional revenue passengers carried by Kedzie depot on March 11, there were some 12,911 Novenites who used street cars leaving the Novena. The chances are there were at least that many who used street cars to arrive at the Novena. And there is no way in the world to check the innumerable thousands who started on other lines and used transfers to arrive at Our Lady of Sorrows. That is true, also, on a smaller scale at many



Novenites at Our Lady of Sorrows

other churches each Friday. All the Novenas are perpetual Novenas—in other words they are to continue as long as the church stands.

Such a religious attendance has attracted nation-wide attention. *Time* magazine was one of the first to recognize the Novena and since then metropolitan dailies and many other publications have told the story.

Novenas Listed

Novenas to Our Sorrowful Mother are held in Chicago on Fridays at the following churches:

St. Laurence, 7140 Dorchester, Rev. P. J. McGuire, Pastor.

St. Sylvester, 2157 Humboldt, Rev. J. S. Collins, Pastor.

St. Peter, Clark and Polk streets, Rev. Leander Conley, Pastor.

St. Agatha, Douglas and Kedzie, Rev. J. B. Sprengel, Pastor.

St. Henry's, Devon and Hoyne.

St. Barnabas, 10154 Longwood Drive.

Our Lady of Grace, Altgeld and Ridgeway.

Assumption Church, 313 West Orleans.

Our Lady of Grace, 2455 North Hamlin.

St. Cecelia's, 4515 South Wells street.

Wherever they are you'll see great crowds of people in attendance, and in each instance you can be sure that painstaking care and preparation has enabled the Chicago Surface Lines to give quick and adequate service to 80 per cent of those who use public transportation.

WINS \$3,000 PRIZE

Motorman McAuliffe Holds Lucky Sweepstake Ticket

John T. McAuliffe has three definite beliefs which he propounds in the following order:

(1) Only suckers bet on horses, (2) Three is a lucky number, and, (3) Friday is an unlucky day.

The odd thing about such beliefs is that they are somewhat at variance with McAuliffe's ownership of a sweepstakes ticket which just netted him a cool \$3,000!

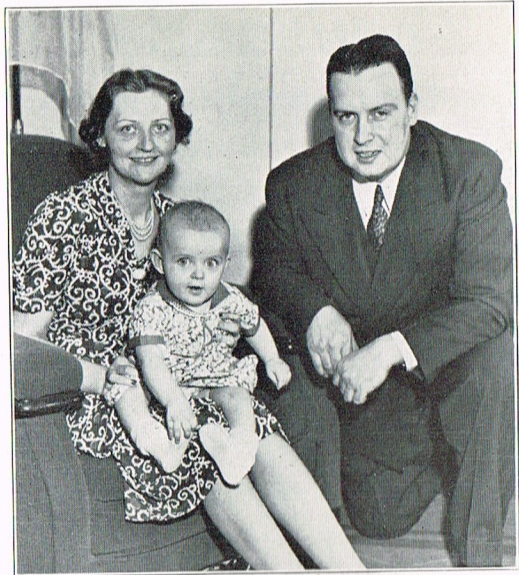
McAuliffe has never placed a bet on a horse in his life.

Three has always been a lucky number and the winning ticket was the third sweepstakes ticket he ever held.

Friday he consider unlucky. He "knew he wouldn't win" the \$150,000 top prize when the race was run on Friday—although he did win the \$3,000 which most people wouldn't consider too unlucky.

When the first drawings were announced, McAuliffe drew a horse named Norman Glory. That alone assured him of prize money and it came at a good time. The daily papers reported that McAuliffe had only 87 cents in his pocket at the time, but that was just a reporter's gag to make a good story. It was one day before pay-day and "Mac" was running a little short, but not that short. Then, too, he's been having some unusual expenses for illnesses that have plagued 8-month-old Maureen and Margaret, his wife.

About \$800 will be used to pay doctor's bills and then McAuliffe will be in the clear and he and the family will celebrate. Margaret was really thrilled. "All the pay days from now



Margaret, Maureen and John McAuliffe

on will mean it's all our pay when past debts are cleared up," said McAuliffe.

"Margaret is going to get a lot of new clothes—I'll see to that—and then we're going on a nice vacation, maybe to California," he said in discussing future plans.

Motorman McAuliffe, badge No. 5101 of North Avenue, has been with the Surface Lines since February 28, 1934. He's a nice, clean-cut looking young man of 28 who has been married for four years. He had two years of college at Loyola and now lives at 3138 Lexington street.

Mac turned down a \$5,000 offer for his ticket before the race was run, but he doesn't feel badly about that.

"It was all or nothing for me," he said. "If I'd sold a \$150,000 chance for \$5,000, I'd never forgive myself."

A guy might be a sucker to bet on a horse, he thinks, but a sweepstake ticket is different. You can bet that he'll never miss buying another—maybe lightning does strike twice!

Some worries have come to Mac since he won the \$3,000. You ought to see some of the letters and telegrams with which he was flooded. Most of them have the same message—"could you loan me \$150 until I get work?" or will you give me \$200." They're all alike—they all beg for money on one pretext or another.

But the young McAuliffe's are a very nice and a very level-headed young couple. They will take care of themselves and they'll see to it that Baby Maureen has some extra special care, too. That's why you're glad they won.

Traffic in New York is slower today than it was 50 years ago, said Mr. Clyde G. Conley, speaking recently in New York to the American Institute of Steel Construction. Old horse-drawn coaches once averaged 11½ m.p.h. on the city's streets, the speaker said, but constant stopping and starting and innumerable red lights had reduced modern motor traffic to 1 m.p.h. "Put a few more cars on the streets of New York," he said, "and movement will practically cease."

Transportation Changes

Positions of Stationmaster and Regional Supervisors Created

Extensive changes in the division supervisory setup were made by Superintendent of Transportation Hall effective April 1. The order affects all of the division superintendents and assistant division superintendents, some of the supervisory force, and some of the clerical force.

The titles of division superintendent and assistant division superintendent were abolished and two new positions, stationmaster and regional supervisors, were created. The stationmaster assumes the duties and authority previously exercised by division superintendents, and instead of 12 assistant superintendents there are now 5 regional supervisors, each of whom will cover three or more stations in the south, southwest, west, northwest or north sections of the city.

The 12 division superintendents who are now known as stationmasters and the stations at which they are located are as follows: C. C. Cricks, Cottage Grove; R. T. Duffy, Burnside; W. A. Bessette, Seventy-seventh; M. B. Quinn, Sixty-ninth; D. F. Bowles, Archer; E. L. Maguire, Lawndale-Blue Island; Thomas Fahey, Kedzie; E. L. Brookman, North Avenue; G. W. Peterson, Armitage-Division; Elmer Balfanz, Elston-Noble; R. L. Hays, Lincoln; and F. J. Smith, Limits-Devon.

The 5 regional supervisors are:

J. J. Theis, formerly assistant superintendent at Burnside, now regional supervisor covering Cottage Grove, Burnside, and Seventy-seventh.

J. B. Becker, formerly assistant superintendent at Sixty-ninth, now regional supervisor covering Sixty-ninth, Archer, and Blue Island.

T. H. Eigelsbach, formerly assistant superintendent at Lawndale-Blue Island, now regional supervisor covering Lawndale, Kedzie, and North Avenue.

Lambert Milz, formerly assistant superintendent at Armitage-Division, now regional supervisor covering Armitage, Division, Elston, and Noble.

J. C. Mathley, formerly assistant superintendent at Limits-Devon, now regional supervisor covering Lincoln, Limits, and Devon.

The new regional supervisors will assist the stationmasters at each of the stations in their territory and will also report directly to the superintendent of transportation.

The purpose of this new setup is to provide a closer knit organization and avoid duplication of effort.

As a result of and in line with the foregoing reorganizations, changes in the clerical and supervisory force were made at the following stations:

Cottage Grove: Harry T. Hooper, assistant division superintendent, transferred to supervisor, vice Walter W. Randle, returned to train service.

George S. Kehoe, clerk No. 3 at Lawndale, was transferred to relief clerk No. 3, Cottage Grove, vice Lyman E. Goss, transferred to clerk No. 5, Cottage Grove, vice Charles E. Keiser who was moved to the General Office.

Seventy-seventh: John A. Volkart, assistant division superintendent, was transferred to supervisor, vice Charles A. Gylling, returned to train service.

Archer: Floyd J. Frank, assistant division superintendent, transferred to supervisor, vice Joseph P. Staska, returned to train service.

Lawndale: John M. Johnson, assistant division superintendent Elston-Noble, transferred to clerk No. 1, vice Charles F. Karschnik, transferred to clerk No. 2.

Charles F. Karschnik, clerk No. 1, transferred to clerk No. 2, vice Benjamin Gawlik, transferred to clerk No. 3.

Benjamin Gawlik, clerk No. 2, transferred to clerk No. 3, vice George S. Kehoe, transferred to relief clerk No. 3 at Cottage Grove.

Kedzie: Andrew Ure, assistant division superintendent, transferred to supervisor, vice Clarence Thompson, returned to train service.

North Avenue: Stuart D. Sim, assistant division superintendent, transferred to supervisor, vice Thomas Henahan, transferred to starter.

Thomas Henahan, supervisor, transferred to starter, vice George E. Wyers, returned to train service.

Isadore Shedroff, clerk No. 1, transferred to clerk No. 1, Armitage, vice Robert O'Connor, clerk No. 1, transferred to North Avenue.

Armitage: Robert O'Connor, clerk No. 1, transferred to clerk No. 1 at North Avenue, vice Isadore Shedroff, transferred to Armitage.

Elston-Noble: John M. Johnson, assistant division superintendent, transferred to clerk No. 1. Lawndale, vice Charles F. Karschnik, transferred to clerk No. 2 at Lawndale.

Lincoln: Edward C. Zage, assistant division superintendent, transferred to supervisor, vice John A. Berg, returned to train service.

"WE TOLD YOU SO!"

This is something in the nature of an "We told you so" story. The March issue of SURFACE SERVICE MAGAZINE told of the bowling prowess of Jules Lellinger of the Accident Investigation Department and ventured to predict that Jules would be among the top rankers at the American Bowling Congress.

The prediction came through beyond the most optimistic expectations. All Captain Lellinger and his teammates on the Birk Brothers team did was to smash all existing team records with 3,234 pins. That score tops the previous record set 11 years ago by 35 pins. Just a new world's record! Captain Lellinger, rolling as anchor man on his team, rolled up a neat little three game score of 668 as his contribution to the biggest set of fireworks the Congress witnessed.

SURFACE SERVICE MAGAZINE

Published Monthly by

Chicago Surface Lines

**231 South La Salle St.
CHICAGO**

Volume 15 April, 1938 No. 1

H. O. Crews Editor

H. F. Peck Associate Editor

OUR STAKE IN THE BUSINESS

In his discussion of the situation facing the Chicago Surface Lines, President Richardson points out that each employe has a direct interest in the success of the industry.

This is an obvious truth that is seldom considered.

We have a habit of thinking that the man who has invested a few thousand dollars in Surface Lines securities has an interest in the business, but that those of us who work here just have a job. A moment's consideration should convince anyone that our stake in the business is greater than that of the investor.

For most of us our work with the Surface Lines is our life career. The majority of us have been here for ten years or more. We have made a good living, even in the toughest years of depression when many of our acquaintances in other lines of work have been out of a job. We have the benefit of disability and life insurance without cost to us. We hope to enjoy similar security as long as we are able to render efficient service.

What we seldom think about, however, is that all of this depends upon the success of the Surface Lines business. To succeed it must be attractive to the investor, for outside money is necessary to success. It must be capable of rendering efficient service, for no business can survive unless it attracts customers.

Thus, it is evident that our present jobs and our hope of future security in them depend upon the success of the Chicago Surface Lines, and it is up to us, collectively and individually, to see that it succeeds.

CONGRATULATIONS!

At a time when every agency of good government is making a determined effort to promote safety on the streets, the announcement that 5,099 Chicago Surface Lines trainmen have had no chargeable accidents during the last fiscal year is unusually commendable.

Accident prevention records have been kept in their present form for the last 11 fiscal years and during that time 525 members of the train force have had unblemished records.

Accidents can be avoided and prevented. That is proved by the records which show a decrease, in spite of the ever-increasing number of vehicles on the street. These additional vehicles have added to the responsibility of every trainman.

Through the years the Chicago Surface Lines has prided itself upon being a good neighbor. Additional justification for that pride may be found in the accident prevention record for 1937.

Could any good neighbor do more than practice unceasing vigilance in the field of accident prevention?

BIRTHDAY INVITATION

It will be a long time before SURFACE SERVICE MAGAZINE will rate a place on the Veterans' Honor Roll, but that doesn't mean that another birthday need go unrecorded.

The birthday is the fifteenth. Fourteen long years, some good, some bad and some indifferent, have gone by since it first began modestly to chronicle the events which happen on a great transportation system.

In all those years it has been *your* magazine.

If it is doing the job you think it should or if it is "missing the boat", you might do your bit to help it along.

You're probably rather busy writing Congressmen and such people nowadays, but if you've time you might write the Editor suggesting, praising or criticising the magazine according to your viewpoint. It can never truly be "a monthly publication by and for Chicago Surface Lines employes" unless employes' reactions are made known at all times.

Bouquets For Trainmen

Record Number Praised For Courteousness—Complaint List Shows Decrease

The patrons of the Chicago Surface Lines "took pen in hand" during March to commend a record-breaking number of trainmen for gracious acts of courtesy. During the month 93 commendations were received which more than doubles the 40 that were sent in during the same month of 1937.

In like vein, too, the complaints against discourtesy, passing up, rough operation and such other acts of careless, inconsiderate trainmen, decreased from 529 received in March, 1937, to 471 for March of this year.

Much of the decrease in the complaint list may be found in the passing up classification and another major decrease is recorded in the number of complaints against quick starting.

It was the greatly increased number of commendations, however, in which the management took pride.

Honesty Commended

The honesty of Motorman Jerry Blake, badge No. 12749 of North Avenue, was highly commended in a letter from Helen Blomgren, 423 North Central avenue, who complimented him for returning a purse which she had dropped on the Lake street tracks. "Words cannot express my gratitude," says Miss Blomgren. "It has given me new faith in humanity at a time when the world seems filled with greed."

Courtesy to a blind passenger was noted by A. H. Garens, district manager of the American Car and Foundry Company, 2417 South Paulina street, and he wrote to praise the generous kindness of Conductor Karsten Oken, badge No. 8638 of Division depot.

A similar commendation was directed to Conductor Ernest L. Walthers, badge No. 14422 of Cottage Grove, for an act observed by Robert T. Sargis, 901 Cornelia avenue.

Helps Crippled Boy

Off-duty though he was, Conductor John F. Moran, badge No. 14274 of Kedzie, was still enough of a gentleman to offer a helping hand with some bundles carried by Sadie K. Carnahan, 708 South Springfield avenue, who wrote in praise of his actions.

Mrs. Agnes Collins, 4929 Vincennes avenue,

wrote to commend Conductor Joseph E. Cuculich, badge No. 14142 of 77th, for the courtesies extended to a colored crippled boy.

Conductor Joseph L. Balnis, badge No. 13696 of Cottage Grove, observed an elderly lady drop money of which she was unaware. He picked up the money and followed her into a crowded car to return it. His simple act of courtesy and honesty was observed by H. Solomon, 3301 Cottage Grove avenue, who wrote the Surface Lines.

A small reward and a grateful letter were sent Motorman Philip J. Hubert, badge No. 13511 of Cottage Grove, for returning a wristwatch which had been lost by Mrs. Arthur Nelson, 8035 Crandon avenue.

Dwight M. Brookens, 7456 South Shore Drive, says he isn't too fond of motormen in general, but he did write with fulsome praise for courteous acts he had observed Operator Patrick F. McCarran, badge No. 13149 of Burnside, perform.

Retrieves Bag

Motorman Otto A. Last, badge No. 12411 of Burnside, did a bit more than his duty in helping Caroline W. Collins, 7836 Marquette avenue, to retrieve a shopping bag

which she had left on another street car. Motorman Last managed to meet the car at an intersection, get the bag and receive Miss Collins' compliments.

Calmly and politely controlling himself while a passenger disputed the worth of a transfer, Conductor Martin A. Johnson, badge No. 11382 of Devon, earned the admiration of Mrs. Emelyn L. Peterson, 6157 Ellis avenue, who witnessed the scene.

Miss Josephine Eilert, 4721 North Maplewood avenue, wrote to commend the efficient manner in which Conductor Edward C. McCarthy, badge No. 10974 of Archer, controlled two troublesome passengers and made them stop actions which were disturbing other patrons.

Offering a token in payment for a fare, Mrs. Victoria Smith, 505 East 35th street, discovered it was for another city. When her fare was advanced by Conductor Edward A. A. Rackow, badge No. 10384 of Archer, she repaid it in a letter that thanked him for his trust.

TROLLEY SPARKS



ELIOT HIRSCH

"Vot kind bizzness men are you? I'm payink cash each day, and I'm getting no discount? Phooie!"

KEEPING 'EM ROLLING

Division Retains First Place As Averages Rise

For the third month in succession Division depot retained first place in the keep 'em rolling contest and made an average of 14,744 miles per pull-in, an increase of 10.4 per cent over the mark compiled in February. In the last six months Division depot has led the list four times and has run second on the two other occasions.

Lawndale spurted slightly from fifth place to take over the second ranking with an average of 11,683 miles per pull-in, an increase of 50.8 per cent. Seventy-seventh, which had occupied second place, slumped off to sixth with a decrease of 10.3 per cent.

A major improvement at Sixty-ninth moved that station from twelfth to fourth place with an average of 9,378 miles per pull-in, an increase of 43.3 per cent.

Percentage losses were tabbed against Noble, Limits and North Avenue, aside from Seventy-seventh, previously mentioned.

Individual records follow:

Rank	Carhouse	Zero Days	Miles per Pull-In	Pct. Inc.
1.	Division	13	14,744	10.4
2.	Lawndale	7	11,683	50.8
3.	Devon	—	11,215	29.2
4.	69th	1	9,378	43.3
5.	Burnside	3	8,406	20.1
6.	77th	—	8,164	10.3*
7.	Cottage Grove.....	3	8,139	3.7
8.	Archer	—	7,372	2.8
9.	Kedzie	1	6,920	1.6
10.	North	—	6,919	.2*
11.	Armitage	2	6,763	30.6
12.	Limits	6	6,662	1.8*
13.	Elston	5	6,124	36.8
14.	Noble	5	5,863	11.7*
15.	Lincoln	1	4,576	37.7
16.	Blue Island	3	4,127	20.5

Carhouse records for the past six months:

Carhouse	Mar.	Feb.	Jan.	Dec.	Nov.	Oct.
Division	1	1	1	2	2	1
Lawndale	2	5	4	1	1	7
Devon	3	3	2	5	6	6
69th	4	12	5	4	11	8
Burnside	5	8	8	11	9	2
77th	6	2	3	9	4	5
Cottage Grove.....	7	4	7	6	5	3
Archer	8	6	6	3	3	4
Kedzie	9	10	9	8	10	10
North	10	9	10	13	8	12
Armitage	11	13	13	7	15	11
Limits	12	7	11	10	12	13
Elston	13	14	14	14	7	9
Noble	14	11	12	12	14	14
Lincoln	15	16	15	16	13	16
Blue Island.....	16	15	16	15	16	15

OBITUARY

Deaths on the System from March 1, 1938 to March 31, 1938

Transportation—Armitage: Charles A. Nelson, employed May 1, 1908, died March 24, 1938.

Archer: John Dignan, employed May 28, 1906, died March 4, 1938; August P. Voegel, employed July 22, 1898, died March 13, 1938.

Blue Island: George H. Weaver, employed May 9, 1902, died March 20, 1938.

Burnside: Oscar W. Larson, employed August 18, 1907, died March 6, 1938.

Cottage Grove: Ottmar Archenbronn, employed January 20, 1912, died March 30, 1938; Henry Smith, employed April 9, 1918, died March 29, 1938.

Kedzie: James Craig, employed December 30, 1890, died March 12, 1938; Harry M. Kemp, employed September 9, 1893, died March 8, 1938; Thomas Smith, employed April 11, 1910, died March 30, 1938; Burt G. VanMeter, employed July 14, 1920, died March 10, 1938.

Lawndale: Henry Sides, employed June 9, 1902, died March 20, 1938.

Lincoln: George Crome, employed August 13, 1918, died March 8, 1938; Albert C. Roeser, employed December 30, 1907, died March 10, 1938.

North: Max Bruhn, employed May 22, 1905, died March 27, 1938; Anton Pacer, employed March 14, 1927, died March 20, 1938; Mathias Rauen, employed October 12, 1923, died March 5, 1938.

Seventy-seventh: Hugh Callaghan, employed January 24, 1913, died March 3, 1938; Walter B. Davies, employed October 28, 1905, died March 29, 1938; Richard Walsh, employed March 2, 1893, died March 18, 1938.

Sixty-ninth: James V. Burke, employed May 22, 1906, died March 21, 1938.

Accident Investigation—Myron Pearce, employed May 30, 1911, died March 27, 1938.

Building and Engineering—Jasper Miccile, employed April 1, 1917, died March 16, 1938.

Shops and Equipment—West Shops: Martin Kramer, employed July 18, 1917, died March 14, 1938; William S. Pedrus, employed February 6, 1908, died March 24, 1938; Arnold Stigsen, employed July 24, 1924, died March 29, 1938; Richard Toban, employed March 13, 1923, died March 17, 1938; Alphonse Vanderhaeghen, employed November 10, 1913, died March 13, 1938.

Track—Joseph Botich, employed May 2, 1928, died March 29, 1938; Henry D. Dimmick, employed January 1, 1913, died March 30, 1938.

A CONSCIENCE AT EASE

Priest Sends Mystery Cash To Surface Lines

Somewhere in Chicago a conscience that suffered for a quarter of a century is presumably at ease today—relieved by the knowledge that a debt has been paid.

The payment was \$1,000, forwarded through a Catholic priest to the conscience fund of the Chicago Surface Lines. It was the largest contribution ever received.

Payment was made by a check signed by Monsignor Peter F. Shrewbridge of St. Leo's rectory, 7750 Emerald avenue on March 25.

"All I am at liberty to say," he said, "is that the money was left at the rectory to be forwarded."

The letter accompanying the check was signed "Rev. Missionary Father" and was designated for the old South Side Street railway whose official name was Chicago City Railway Company, which became a part of the present Surface Lines system following the unification ordinance of 1914.

Two weeks before the check was sent a mission had been conducted by the Marist Fathers at St. Leo's. It is believed that someone who attended gave up the \$1,000.

WATCH YOUR STEP!

Statistics show that of the last million people who lost their lives via gasoline, 21 per cent were burned with it, 2 per cent drank it, and about 99 per cent of the balance stepped on it.

Accident Records Improve

Reduction Is Shown in Spite of Increased Number of Vehicles on Streets

By WILLIAM PASCHE
Supervisor of Accident Prevention

Increasing attention to the principles of accident prevention throughout the Chicago Surface Lines system resulted in a decrease of 1.4 per cent in the number of accidents during the fiscal year ending January 31, 1938.

That decrease, which at a hasty glance may seem unimpressive, is nevertheless noteworthy when it is compared to the 3.5 per cent increase in general traffic fatalities in Chicago during 1937. The Surface Lines' record stands out boldly against a 4 per cent increase nationally, a 5.4 per cent increase for the State of Illinois and a 7.9 per cent increase for the seven counties surrounding Chicago.

Emphasizing this record is the fact that 5,099 Surface Lines trainmen can proudly exhibit cards testifying that they had no chargeable accidents during the last fiscal year. Of that number 525 have had no chargeable accident during the last 11 consecutive years in which records have been kept in their present form. Of this latter number 59 are motormen.

Of the total number of no-accident trainmen, 2,938 have had no chargeable accident for 2 years, 2,017 for 3 years, 1,643 for 4 years, 1,393 for 5 years, 1,224 for 6 years, 1,091 for 7 years, 1,008 for 8 years, 848 for 9 years and 699 for 10 years.

Street Hazards Increase

These outstanding records have been achieved in spite of constantly increasing street hazards caused by the unprecedented number of automobiles in Chicago, totaling 571,614 last year. That figure is 48,360 larger than during 1936 and represents an increase of 9.24 per cent.

To make so good a safety record in the face of increasing street congestion demonstrates again the value of adherence to accident prevention principles and offers further proof that the street car is the safest place in the streets.

Due to its size and the fact that it is constantly in the public eye, the Surface Lines train force is most conspicuous in its accident prevention work. One material recognition of this fact was the awarding of a plaque to the Transportation Department by the Chicago Safety Council for the greatest improvement in accident reduction made by any gas bus fleet during the first six months of 1937.

Department Records Improve

Other departments of the Chicago Surface Lines also made commendable records. A decline of 4.9 per cent in the number of accidents was registered by the Track Department; Electrical Department records showed a decrease of 10 per cent; the Utility Department had a decrease of 32 per cent and Shops and Equipment Department accidents declined 35 per cent. Miscellaneous accident reports, not directly traceable to any one department, showed a decline of 8.8 per cent.

There was a notable decrease of 11.4 per cent in the total number of injured employees on the system. In this report the value of the safety goggles was proved again when six were

smashed without injury to the eyes of the wearers. No eyes were lost during the entire year.

The 1.4 per cent decrease in the number of accidents, referred to earlier, indicates improvement throughout the system. Particularly gratifying to the management was the decrease of 200 fall-in-car accidents. This decrease was made notwithstanding a decrease of 24 per cent in this type of accident last year, thus indicating progressive improvement in smooth operation.

Operators Make Good Showing

In the classification of boarding accidents operators of one-man cars registered a striking decrease of 16.9 per cent, but this was nullified by the record of two-man cars, resulting in a net increase of 1.5 per cent. Generally speaking, conductors can do much to avoid boarding accidents by looking out before giving go-ahead bells. Alighting accidents increased 2.7 per cent, in spite of a 17.3 per cent decrease in alighting accidents from the trolley buses.

Vehicle collisions increased 2.1 per cent. The greatest increase was noted in the straight-track type, indicating that numerous motormen disregarded elementary safety practices by failing to keep their cars under complete control. The right angle type of vehicle collision also showed an increase. Many of these accidents could be avoided by taking extra precautions at all intersections.

More Gas Buses Involved

Much of the blame for increase in vehicle collisions can be laid directly at the door of the gas bus operators, for two-man cars and trolley buses showed decreases in accidents of this type. The increase to the accidents in which gas buses were involved was almost identical to the per cent increase in gas bus miles travelled.



Watch the Fellow on Your Right!

In the Transportation Department records there was a decrease of 4.3 per cent in the number of car and person accidents. In the same department the miscellaneous accidents dropped 5.9 per cent.

In viewing the entire record of the train force it is important to note that cars and buses travelled a total of 129,021,425 miles, which is 1.56 per cent more miles than were travelled during the previous fiscal year.

JOSHUA BURGEE PASSES

Popular Transportation Official Dies Suddenly

Joshua Burgee, 75, assistant superintendent of transportation for the Chicago Surface Lines, died suddenly of a cerebral hemorrhage in the council chambers of the City Hall, Monday, April 4.



Joshua Burgee

A veteran transportation man, Mr. Burgee numbered hundreds of public officials as his friends, made during the years he represented Surface Lines interests in the City Council and the legislative halls at Springfield. His first connection with the street railway system started in October 1885, when he worked as a conductor on a horse car line running on Wentworth avenue from Jackson Boulevard to 39th street. As an assistant division superintendent he was instrumental in handling the crowds that attended the World's Fair of 1893.

In his long career, Mr. Burgee held many important positions with the Surface Lines. For a short time he was general manager of the Calumet & South Chicago properties after they were taken over by the Chicago City Railway company.

Mr. Burgee was born in Baltimore, Maryland, on December 23, 1862 and it was from Baltimore that he chose his bride when he returned there on September 23, 1886 to marry Katie M. Caltrider, who survives him. There are no children.

Mr. Burgee lived on the south side for many years and at his death had a home at 8341 South Park avenue.

Services were held at Lanyon's undertaking parlor, 415 West 63rd street, April 8, under the auspices of Englewood Masonic lodge A.F. and A.M. Officials of the Chicago Surface Lines served as pallbearers. Interment was at Oakwood cemetery.

Mrs. Greene Mourned

Employees throughout the Chicago Surface Lines system were saddened at news of the death of Mrs. Anna T. Greene, wife of P. A. Greene, a veteran employe of the Transportation Department.

Mrs. Green died March 19 at the age of 70. Funeral services were held March 21. She is survived by her husband, whom she married October 2, 1889; a daughter, Mrs. Vivian Kirchoff, and a son, J. Menard Greene. Mr. Greene will be remembered by thousands of trainmen as a former dispatcher.

"HEART OF THE SYSTEM"

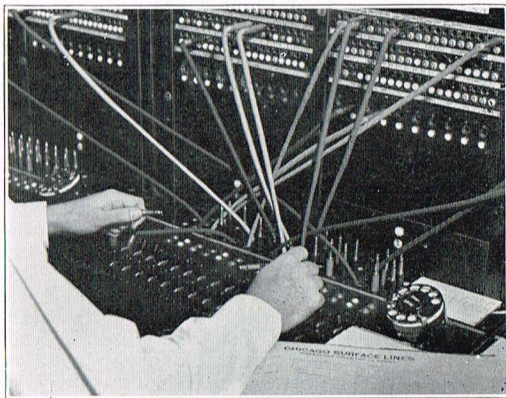
Group Sees Transportation Dispatchers Handle Distress Calls

The dispatcher's switchboard—"the heart of the system"—was vividly demonstrated to a group of younger Surface Lines employes recently in conjunction with Assistant Superintendent of Transportation J. B. O'Connell's talk on various problems of the Transportation Department.

Of major interest to the group was the practical demonstration of how the switchboard dispatchers handle distress calls that arise from various points on the system. Amplifiers arranged in another room picked up the "calls" that came in reporting "fires," "wrecks" and other "accident cases." Re-routing orders were issued, supervisors sent to unsnarl traffic and wreck wagons were called out during the demonstration.

So realistic were the "calls" that George Johnson of the Track Department hotfooted it to a "fire" which had been reported on Madison street. Others, equally gullible, discussed the seriousness of reported "accidents" and Willis Helfrich even looked up the file on the "accident case" which had caused a serious delay to "run 49, southbound on Ashland avenue." You'll gather the demonstration was most realistic!

But the real "heart of the system" was best shown—or heard—on April 6 when transportation officials directed the snow-fighting activities of some 450 men who battled the worst April snow-storm on record—a fall of more than eight inches.



The "Heart of the System"

'Phones rang steadily. Run No. x was off the track. Sweepers were needed on another street to counteract drifting snow. Instructions had to be given various stationmasters. Temperatures must be checked. Stalled trucks must be cleared from street car right-of-ways.

Buzz-buzz-buzz. The 'phone kept up its steady demand for attention. A switch was frozen at one point. A let-up in the storm was apparent at another. And always the instructions went out to "clean 'er up—clean 'er up. Get 'em all clear before morning."

And steadily, irresistibly the fight went on—directed from the "heart of the system"—so that a great transportation system could run to serve the 80 per cent of the riding public which is dependent upon it!

A GOOD FELLOW LOSES

Accommodating Conductor Gets a "Phony" Twenty

Big hearted Conductor Edward W. Huenning, badge No. 9190 of Kedzie, isn't going to be that way any more. He learned his sad lesson by being too big hearted for his own good.

As he sat counting his money in Kedzie depot April 15, preparatory to checking in, he was approached by a youth of some 22 years, apparently of Italian descent, who asked change for a twenty dollar bill. Huenning could easily have waved him to the cashier's window, but he made change from his own pocket.

When checking in time came Huenning was short \$20 on his trip sheet record. The twenty tendered by the stranger was a phony, which the receiver caught at once!

The little story isn't related in an attempt to kick a good man when he's down. It might, however, serve to warn other conductors that there are a flock of counterfeit twenty dollar bills that have recently appeared in Chicago—and there are other agencies which will cash big bills if they're good.

ATTENTION! UNDERTAKERS! —HERE'S A LIKELY PROSPECT

If you're real chummy with any doctors, undertakers or coffin salesmen, you might tip them off to the man mentioned in the following report. He isn't likely to be around here very long.

Here is the whole story as it appeared in the report of Conductor Frederick E. Calender, badge No. 9004 of Armitage.

"While southbound on Milwaukee avenue at North avenue, at 5:59 P. M. on March 18, we were waiting for the light to turn green when two ladies came running for the car. When the light changed one of the ladies said, 'Don't start, Mister, there is a man under your car!'

"I looked out and saw a man lying on his stomach under the center of the car.

"When I asked him what was wrong he told me he was getting his hat!

"I told him he had these two ladies to thank that he was not killed.

"He just laughed and said it was all right, for the light was red!"

Sorry we haven't the fellow's name, but he shouldn't be hard to find—there can't be more than one of his type!

A New York magazine informs us that some transit companies in Japan act as matrimonial agencies for their female bus and tram conductors. Each girl's full name appears on a board beside the driver and a passenger who is a prospective bridegroom must write the company and advise officials of his honorable intentions before any dates are arranged. Practically none of the conductorettes remain single after two years of service.

"They're taking all those pay-as-you-leave cars off the line."

"Why?"

"Two Scotchmen starved to death in one."

TRANSFERS TO JAIL

Artist Narrowly Misses Committing the "Perfect Crime"

For art's sake Mr. John Scrydis committed the almost perfect crime. For the next 30 days his mail will be forwarded from Willow Springs to the House of Correction.

Mr. Scrydis was sent to his new abode by Judge John McGarry after he was nabbed for presenting street car transfers used in 1937 to get rides in 1938.

It wasn't so bare-faced a deception as that implies. Mr. Scrydis has toiled long and earnestly over his transfers to make them look just like the 1938 variety. With painstaking care he changed dates from blue to black, and the number "12" to "17."

Perhaps the world will never know how many patient hours he spent making those street car transfers look all right—almost. And he changed not one transfer but six! All for the same day, March 17. He could thus look forward to six rides—all in one day.

Mr. Scrydis' art had only one flaw. He neglected to change the identification number to the proper color for this year. And so he was arrested. Conductor Thomas P. Holmes of Sixty-ninth saw to that when he detected the forgery.

Philosophically muttering something which sounded like "life is like that," Mr. Scrydis hinted darkly that he will relinquish his artistic endeavors upon his release from the brig.

HARD ON HITCH-HIKERS!

John Hitches a Ride But Winds Up With No Place To Go

John Brill will never attempt to hitch-hike again. And if he ever weakens in that resolve, you can be sure he won't try to hitch either a street car or a squad car.

Brill, 21, 3333 North Marshfield avenue, had his first hard luck when his car ran out of gas at Blue Island and Damen avenues. He swung aboard a passing street car and told Conductor Thomas M. O'Brien, 3150 North Racine, that "this pistol will go off if you don't take me to the nearest gas station."

O'Brien did just what you'd do—gave Motorman Laddie Tetrev, 2753 South Ridgeway, the signal to go—and they dropped Mr. Brill at Ashland and 22nd.

While the crew made a report from the call box on that corner Brill went for gasoline and flourished that gun of his again. And just then O'Brien hailed a passing squad car containing Officers Raymond Witalski and Joseph Dunworth, of Stock Yards station.

As they completed their story to the officers—this is stranger than fiction—Brill approached and asked the officers for a lift to his stalled car!

Mr. Brill was taken to the police station. The police are keeping both John and the little pistol he used on his hitch-hiking attempts.

In England during the hunting season, the fox and hounds have the right of way over trains. This is exercised only infrequently, but last season, the Belvoir hunt held up a fast London train for eight minutes to permit the fox, hounds and horses to cross the tracks.

Departments and Divisions

Accident Investigation

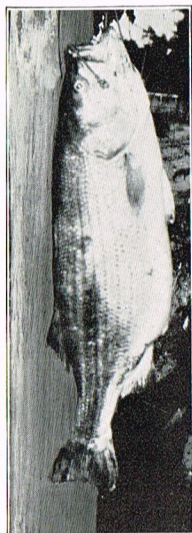
Myron W. Pearce, who entered service May 29, 1911, having served as assistant cashier for many years in the Department of Accident Investigation and the Legal Department, died suddenly on March 27, at the age of 81 years.

Mr. Pearce was brother-in-law of the late Henry A. Blair, who was president of the Chicago Surface Lines prior to his death.

Services were conducted at the Chapel in Graceland Cemetery on March 28.

Mr. Pearce was well known in the department for his constant devotion to duty and his passing will be regretted.

BASS!



43 Pounds!

Carl Midland of this department and his wife, and Ernie Potenberg of 77th street depot and his girl friend, recently received some "Annie Oakleys" to a fireman's annual ball in one of our northern suburbs. The fire laddie couples danced with the same speed and fervour with which they dash down Main Street on their way to a bonfire; and our representatives could not take it and had to withdraw, being convinced that Surface Lines operation does not have the same dash and abandon as that of the fire laddies.

Adjuster Thomas G. Johnson arranged his vacation to suit a business call at Newton, Georgia, the old home town. Combining business with pleasure, he went fishing on the Flint River at a point about 200 miles from the

Gulf of Mexico and landed a 43 pound Rock Bass, measuring 35½ inches in length, on March 20, on a three year old 18 pound test line.

The fishermen thought at first they had caught a snag, but as the snag moved they became aware of their luck; and after an hour and 25 minutes of careful manipulation of the old line they brought up the prize whose picture accompanies this article. The pole shown in the picture is a full size telegraph pole.

Electrical

Harold Coyne, maintenance electrician since March 5, 1938, is the proud father of a eight pound baby girl. May we also extend congratulations to Mrs. Coyne and best wishes for Rose Ann.

Our most sincere sympathy is extended to Charles Ernst, surveying engineer, in the loss of his father, who through life was a well known Chicago theatrical musician. He was active in his work to within a few days of his death.

Alex Lalond recently suffered severe burns from an electrical short circuit. His fellow-workers hope for a speedy recovery.

Clarence Mimmick's pet cat around Grand and Leavitt has again presented him with several kittens. Clarence seems to be somewhat downhearted for he had hoped that Easter bunnies would arrive instead of kittens.

Billy.

Schedule and Traffic

The sympathy of the department is extended to John Franzen whose mother passed away on March 12.

Gus Lohse was moved from his home to the Passavant hospital on March 25, where he is receiving special treatment.

Charles E. Keiser recently returned to the department from Cottage Grove depot.

Fred Excell has been under the weather for several days; we hope that Fred will be back soon.

George Weidenfeller.

Shops and Equipment

South Shops: Heinz Doering, timekeeper in the blacksmith shop, recently recovered from a foot injury caused by stepping on a nail. We have been informed that he is now being outfitted with a pair of shoes with steel puncture-proof soles.

Sincere sympathy is offered to Frank Renc, blacksmith shop, upon the loss of his sister who recently passed away.

Question of the hour in the machine shop: Was it that certain feminine presence that ruffled Andy Ziegelmeier's serenity the night of March 30, at the A.B.C. Tournament?

Elsie S. Frank.

West Shops: During the past month, the following employes in our department passed away—William Petrus, carpenter, West Shops; Arnold Stigsen, mill machine hand; and Richard Toban, specialist, machine shop, West Shops. We wish to extend our sympathy to the bereaved loved ones.

Lillian Hultquist.

Around the Car Stations

Blue Island

The sound picture, "Make 'Em Like You" shown at this depot March 23, had a 100 per cent attendance. Every one listened with interest to the valuable talk given by Louis E. Bohlin, Chief Clerk of the Transportation Department. According to the results shown to date, Mr. Bohlin's talk had a remarkable effect.

We are all glad to have E. L. Maguire, Station Master, back with us again after a two month vacation spent in Pasadena, California and Phoenix, Arizona with Mrs. Maguire. Mr. Maguire reports having had a very wonderful time and Mrs. Maguire also had a very enjoyable trip. On their arrival home from Phoenix, Sunday March 27, they were greeted by their daughter Vita, relatives and friends, including Mr. and Mrs. T. H. Eigelsbach and son. Mr. Eigelsbach presented Mrs. Maguire with a beautiful basket of flowers in behalf of the office force at Lawndale and Blue Island Depots.

Conductor John Vujtech was presented with an 11 pound baby boy on March 18. Congratulations.

Motorman George Weaber, after several months' illness, passed away Sunday, March 20 at his home in Lyons, Illinois. Funeral was held Thursday, March 24 and burial was at Mount Auburn cemetery. Pallbearers were: Edward Gaede, Charles Schaefer, Edward Ludvik, John Welat, Albert Westphal and William Winter. We extend our sympathy to his widow and son.

Sympathy is extended to Conductor Albert Schmitt in the loss of his mother.

C. P. Starr.

Devon

Congratulations are in order for Motorman Carl Holmquist, who became a grandfather by the birth of a child to his daughter on March 3, who will be known as Mary Ann.

Acknowledgment is hereby made to Motorman Rassmussen, who recently visited Speedway hospital, for the suggestion that those of us who are able should at our earliest opportunity visit those of our brethren who anxiously await our call. Among those confined are Motorman John Moore and Conductors John Cannon, Frank Rowles and Motorman Jack Hartnett of Limits, brother of Mike and Tom.

With the baseball season at hand, we earnestly solicit new and old candidates for the team, to help retain Devon's reputable standing in the league.

John Binder, Jr.

Division

"Make 'Em Like You." Louis Bohlin did just that, literally speaking. Mr. Bohlin made the men realize that part of their work was being courteous and polite. Bringing to work your petty grievances and little arguments that may arise at home or with other associates is bad not only for you but also for persons who come in contact with you during your day's work. The impression it creates is not a good one. Keep in mind the fact that you are selling a service in competition with others. A satisfied rider will not seek other modes of transportation.

The other day an election was held for the selection of a manager of the baseball team. It seems that A. Lowery was hired as campaign manager for those who aspired to the job as manager. After the votes were tabulated and the result known all the aspirants were running behind Glen Cooley of the repair department who was chosen.

After due consideration Mr. Cooley decided he could not accept the job (his wife said no) and thanked the boys for the honor.

Another election was held and this time G. Cech was elected and he immediately set about planning for a championship year.

Sympathy is extended to Conductor E. Koepke, whose mother passed away March 8.

Be alert! You may avoid an accident.

Chet Johnston.

Seventy-Seventh

That noise you hear back toward the alley of 77th Street Depot is the ball team limbering up for the 1938 season. The new head man, Conductor E. E. Knapp, is out there whipping the boys into shape for the pennant race, and he hopes to end up in front. We hope so too, because our kopeks are going to be on him to win.

It was just St. Patrick's day last month to all you sons of Erin, but it was more than

that to little Patricia, daughter of Conductor M. J. Murphy—it was her birthday, and that, if you're looking through green glasses, is the ultra of the ultra.

One sailfish in our clubroom would seem enough to gladden any sportsman's heart, but no, Conductor E. M. Freeberg is down in Florida now angling for a mate, if what he tells us isn't just another fish story. When we see two sailfish on the wall, we'll be the first to cheer, provided we're not just seeing double that day.

You can start sharpening your pencil for the annual golf tournament, which promises to be bigger and better than ever. We developed motor trouble last year on about the third tee, but expect to be in better shape this year. We're bringing along two pencils—both sharp.

Chief Clerk of the General Office, L. E. Bohlin of the recent "Make 'Em Like You" meeting, packed a full house out our way in both sessions and made us like it.

It isn't what you make that counts; it's what you save, and our Credit Union is proving a decided incentive to save. Five thousand dollars has already been subscribed, against which more than 86 loans have been made.

The tenth wedding anniversary is being celebrated this month by Motorman and Mrs. Herb Johnson. It's nice to see comparatively young people honoring their tenth year together now-a-days when the matrimonial rocks are filled with so many shipwrecks of only ten months duration. Bon Voyage, folks, on the rest of your cruise.

Condolence is extended to the following on death in their families: Conductor C. C. Beyer, his daughter; Motorman R. R. Franzen, his mother; Motorman K. L. Landeck, his father; Motorman Harry Oakes, his wife; Motorman T. McCormick, his wife, and to the families of the deceased Starter Richard Walsh, Motorman H. J. Callahan and Conductor W. B. Davies.

Walter F. Story.

Lincoln

Chief Clerk Fred Murbarger, who was secretary and treasurer of the Credit Union, resigned the position because of other duties and he was replaced by Conductor Ed Hutten, who is taking a great interest in the work and getting ahead, very nicely.

Now that it's time for the soft ball season to open, why don't all you young fellows who like to play get into the game? Practice makes perfect and all good players are needed to make the team a success.

Motorman J. Vogt is wearing a big broad grin these days and the reason is he has bought the ring, the girl has said yes, and now we are waiting to hear when the wedding bells are to ring for the happy couple.

The wife of Conductor Fred Elie, who underwent an operation recently, is at home and convalescing nicely.

Two of the men of the station passed away this month. Conductor George Conce died on Saturday, March 12. Services were held at Schmidt's Chapel, 3824 Irving Park Boulevard, with burial in Montrose Cemetery. Motorman Albert C. Roeser died on Monday, March 14. Services were held at Molloy's Chapel, 2627 Lawrence Avenue and St. Alphonsus Church. Burial was in St. Boniface Cemetery. Sincere sympathy is extended to both families.

Henry Spethman.

No-Accident Honor Roll

See story on page 11

COTTAGE GROVE

ONE YEAR MEN

Conductors

Name	Badge	Name	Badge	Name	Badge	Name	Badge	Name	Badge
O'Reilly, P. J. ..	176	Lodwick, A. C.	2580	Gimpel, A.	4112	Christensen,		Gillen, C. A.	10726
Million, C. B.	438	Papp, F. J.	2646	Jenky, A.	4190	F. M.	8896	Sinon, J. P.	11258
Drawert, F.	1024	Dineen, J. M.	2762	Buckner, L. M.	4212	Archenbrom,		McClintock,	
Fitzell, P. W.	1154	Smith, W. A.	2770	Thom, C. M.	4252	A. O.	9030	W. A.	11926
Rowland, R. H.	1210	Hitchcock, E. Y.	2932	Emerick, A. D.	4388	Brennan, J. P.	9092	Rees, R.	12136
Wilson, R.	1220	Gustaveson,		Kane, J.	4598	Stevenson, L. B.	9620	Rittenhouse,	
Cook, J. R.,		A. W.	3444	McMahon, E. F.	4956	Hanson, E. A.	9850	F. K.	12432
No. 4	1236	Cregar, G. W.	3470	Sandberg, E.	5612	Miskell, M. J.	10028	Verhey, W.	12474
Horan, W. M.	1242	Gratton, F. F.	3704	Graves, W. B.	6684	Johnston, A. A.	10030	Knapp, J. E.	13122
Stage, W. J.	1664	Eckel, C. J.	3834	Feinholz, C. C.	7562	Rosean, J. C.	10348	Browne, P.	14276
Koprowitz, R.	1844	Graham, J. R.	3896	Snider, E. K.	8258	Gordan, J. R.	10408	Holbert, D. E.	14348
Montgomery,		Johnson, L. L.	3970	McIntyre, K.	8472	Casey, J. J.	10558	Walthers, E. L.	14422
G. E.	2320	Roche, E. W.	4020	Jorgenson, H. S.	8718	Beaman, W. O.	10624		

Motormen

Duffy, M., No. 2 ..	457	Ivers, J. A.	1485	Hennessy, M. P.	3931	Clarke, J.	7303	Miskell, G. C.	10803
Shaw, J.	1023	Tork, O. S.	2043	Mohrs, F. F.	4015	Myers, H.	7837	Griffin, M. J.	11193
Scanlon, G. T.	1079	Craft, W. I.	2655	Bennett, J. F.	4067	Morton, W. D.	8271	Daly, J.	11615
Ross, O. N.	1137	Hawken, C. W.	2757	Brennan, M. J.		Rice, J. B.	8291	Torsdahl, A. E.	11887
Jones, J. E.	1197	Kenna, J.	2973	No. 3	4073	Dedmond, H. J.	8793	Ryan, D. J.	11925
Wellman, H.	1239	Walker, J. H.		Fitzpatrick, T.	4081	Ryan, E.	9003	Scanlon, P. J.	11965
Schaeffer, C. A.	1275	No. 1	3365	Duffy, C. A.	4419	Harris, J. F.	9347	Babbe, R. F.	12041
Barrett, E. F.	1287	Harris, C. S.	3409	Menogue, G. W.	5075	McCartney,		Miller, N. W.	12171
Varbelow, E. M.	1383	Olsen, C. A.	3613	Hanley, M. J.	6745	W. B.	9619	Daly, P. P.	12365
Crowley, D.	1385	Bloomfield, J. L.	3619	Birker, W. W.	6769	Dunn, J. J.	9687	Clapp, E. H.	12555
Camalick, T.	1433	Appel, C.	3695	Garbutt, W.	6793	Chisholm, W. R.	10319		
Martensen, P.	1471	Reinke, O. C.	3875	Strouse, R. P.	7095	Todd, J.	10657		

TWO YEAR MEN

Conductors

Karnik, G. O.	272	Fisher, W. I.	1506	Fitterer, F. E.	4034	Bobus, J. J.	6782	Kennedy, H. W.	9904
Buergermeier,		Kaminsky,		Cuddy, F. G.	4160	Funk, D. R.	7220	Finnerty, M. F.	10066
J. P.	798	G. L.	1516	Robinson, W. J.	4240	Williams,		White, R. E.	10280
Davis, R.	1180	Neighbor, G. J.	1600	Peterson, J.	4272	M. A.	8372	Lind, H. M.	10388
Shober, H. L.	1202	Shober, H. G.	1994	Miller, E. S.	4300	Herndon, C. R.	8380	Quant, R. H.	10682
Drake, F.	1208	Kane, P., No. 1 ..	2692	O'Connell,		McReynolds, J.	8880	Robinson,	
Mahoney, D.	1250	Rodenbeck,		H. A.	4656	Walsh, P. J.	9028	W. E.	12194
Hill, D.	1306	E. E.	2740	O'Neill, N.	5950	Hooper, F.	9242	Barsalow, J. N.	12948
Elliott, G.	1340	McNichols,		Spencer, R. T.	6256	Brown, J. G.,		Kotrba, W.	13364
Jones, I. H.	1370	T. J.	2962	Macaskill, M.	6260	No. 1	9360	Balnis, J. L.	13696
Waters, P. F.,		Loos, W. E.	3324	King, L. T.	6664	Robinson, J.	9588	Olsen, C. E.	13734
No. 1	1420	Anderson, A.	3646						

Motormen

Walsh, J. B.	999	Peterson, C.,		Galvin, P.,		Ryan, L.	5985	Johnston, A.	10375
McMahon, T. F.	1269	No. 1	1579	No. 1	5181	Baldwin, C.	6099	Botham, A. T.	10549
Tarr, F.	1359	Decker, J.	2367	Van Coversen,		Blaney, J. J.	6531	McShane, P. E.	10987
Kirby, J.	1569	Meyers, A.	2789	W.	5277	Roche, A.	10255	Falk, J. E.	11465
								Foley, H. D.	12241

THREE YEAR MEN

Conductors

Hopkins, T.	350	Smith, H.,		Sheehy, W. F.	7352	Mallon, J. J.	9510	Moriarty, W.	11510
McKeon, M.	368	No. 2	2226	Sherman, F.	8130	Hjortsvang,		Ronschke,	
Broad, J.	1264	Gilson, F. G.	2538	Mulqueeny,		A. V.	10306	F. W.	11714
		Rafter, P. J.	4206	J. L.	8456	Reynolds, P. J.	10316	Eckel, W.	12906

Motormen

McGrath, H.	1443	Noonan, T.	2813
------------------	------	-----------------	------

FOUR YEAR MEN

Conductors

Ludwig, J.	2218	Rees, E. S.	8604	Hurlocker,		Stevens, A. L.	10620	Whiteford,	
Murphy, T.	3020	Hannon, R.	10514	S. E.	10592	Grasz, P.	11680	T. J.	12868

Motormen

Thom, W.	847	McHugh, P.	1353	Malone, M. P.	3455	Fitts, M. S.	10597
---------------	-----	-----------------	------	--------------------	------	-------------------	-------

FIVE YEAR MEN

Conductors

Name	Badge	Name	Badge	Name	Badge	Name	Badge
Moore, E. T.....	4048	Popp, J. J.....	7596	Benbow, A.	11006	Waters, P. J.,	
Bliss, A. P.....	5828	Hayes, P.	9382			No. 2	11260

Motormen

Reid, M.10543

SIX YEAR MEN

Conductors

Bauer, C. J..... 4226 Clemons, C. 4426

Motormen

Doherty, T. 1227 Heinrich, A. H. 5425

SEVEN YEAR MEN

Conductors

Jones, W. S.....	1178	Kinney, E. L....	4332	Fleming, C. R.	4822	Bartley, H. E....	5740	Riley, F. B.....	8830
Cook, J. G.,		Sorenson,							
No. 2	1226	A. W., No. 2	4808						

EIGHT YEAR MEN

Conductors

Nelson, J.	250	Gorman, J. P...	2738	Northoff, N. J.	5688	Collings, S. B...	9354	Buergermeier,	
Filan, L. D.....	2346	Connelly, R. J.	3644	Carroll, J. C....	7222	Enos, T. J.....	9440	W.	9666

Motormen

Kenny, P. 1627 Welin, E.11449 Woods, E. L.....12383

NINE YEAR MEN

Conductors

Lundberg, H.....	1194	Stenzel, W. T...	1634	Bird, R.	1804	Anderson,		Steen, W. A.....	6962
Hemmergren,		Hovmoller,		Lane, J.	2212	H. A.	4142	Sproll, A. W.....	11216
A.	1278	A. P.	1656	Barry, R. J.....	2782	Dudley, H. M...	4150	Heffernan,	
								E. J.	11330

TEN YEAR MEN

Conductors

Tollstadius,		Sorenson, A. F.,		Klingenhagen,		Ammerall,		Markham,	
C. P.	1414	No. 1	4072	H. F.	7320	W. E. J.....	10238	J. H.....	11564
Minning, A. H.	1558	Flanagan, R. J.	4236	Costello, J. F...	10178	McGeever, P....	10274		

Motormen

Morris, D. F.....10797

ELEVEN YEAR MEN

Conductors

Horrigan, J. J...	252	Cook, J. R.,		Hewitt, H. W...	1814	Ruebensam,		Fish, H. M.....	5422
Jensen, W.	486	No. 4	1236	Barsalow, E. H.	2000	H. H.	4044	O'Neill, D.	6496
McDonnell,		Bramier, F. W.	1262	Shea, F.	2570	Phillips, J. J....	4050	Prather, L. W.	9084
J. F.	862	Hirsch, M.	1280	Murray, J.	2716	Kehoe, J.	4056	Condon, J. B....	9454
Fuchs, J.	1060	Wenham, J.	1334	Ricker, T. M...	2914	Sliter, D.	4070	Zigament, T. J...	10932
Dwyer, J. J....	1100	Stenzel, H.	1402	Hockenbery,		Miskell, J. P...	4156	Dimaline, F. J...	12150
Spivey, H. T....	1130	Brennan, J. E.	1474	J. A.	3152	McGoldrick, P.	4218	Walsh, W. J....	12400
Lovett, J.	1186	Potenberg,		Haggerty P.	3168	McCune, J. P...	4294	Fogarty, T. P...	14160
		E. F.	1650	Seefeldt, O. A...	3382	Gilmour, C. R.	5080	Callaway, B. F.	14426

Motormen

McGrath, M. 1585 Schweinfurth, Hanley, W. J...10183
Bowden, W. H. 2401 L. 5617 Gustaveson, G...10753

BURNSIDE

ONE YEAR MEN

Conductors

O'Rourke, M.....	582	Zelensky, C.	2016	McNamara, P....	5254	O'Neill, D. J...	8450	Enderlin, D.	10544
Clemons, H. B.	584	Bergeson, S. A.	2024	Hoyt, C. W.....	5566	Dahlstrom,		McDonagh, A...	11248
Jacobson, A. J.	594	Eaton, C. L....	2452	Britton, T. R...	5840	A. E.	8452	Bassett, F. W...	11872
Best, C. F.....	610	Swanson, C. J.	2474	Codner, R.	5952	Blackwell, S. T.	8460	Anderson, W...	12634
Lee, V. M.....	666	Termeulen, C...	2786	Vasilopoulos, P...	5968	Weber, W. C....	9054	Borrowdale, L...	12716
Graham, P. J....	912	Mather, F. L...	3442	King, J. D.....	6700	Elverson, P.	9266	Fox, D. J.....	12876
Jackson, W. H.	1032	Batka, S.	4102	Lindley, R. W...	7912	Nelson, O.	9338	Malloy, P. J....	13816
McKenna, E.....	1092	Gibbons, R. C...	4316	Bradley, T. F.	7942	Ryan, J. P.....	9368	Jacobson, C. L.	13942
Gertzen, J.	1660	Murphy, J.,		Kelly, H. O....	8416	Karoluch, R.	10008	Graves, E. T...	13966
O'Brien, W. J.	1802	No. 1	4940	Conley, M. J....	8426	Fifer, E. H.....	10492		
Dunn, E. F.....	2012								

Motormen

Name	Badge	Name	Badge	Name	Badge	Name	Badge	Name	Badge
Hanson, A.	165	Sauer, W.	703	Vandergarff, J.	2257	Swanstrom, G. T.	4579	Kartch, F. W.	8399
Ryan, M.	335	Farrell, B.	781	Ganzert, C. M.	2309	Stahl, H. B.	4925	Anderson, J. W.	8713
Leske, E.	399	Doherty, T.	783	Harvey, W. B.	2577	Holland, G.	4957	Hickey, M. E.	9367
Duggan, M.	519	Daly, J., No. 1	821	Ward, P. S.	2627	Rodey, T.	5021	Ryan, J. E.	10207
Danielson, F.	535	Lyons, D. J.	1319	Stewart, C. H.	2833	Schuetter, H. S.	5339	Hilbert, A. J.	10353
Broderius, F.	547	Smith, M., No. 2	1343	Burgeson, A. J.	2839	DeYoung, J.	5343	McKenna, P.	10963
Crawford, B.	577	Boomgarn, A. H.	1425	Hein, M. J.	2917	Lange, F.	7155	Morross, O.	11215
Cochrane, J. H.	623	McBroom, S.	1535	Olson, O. N.	3151	Davis, J. N.	7825	Pine, L.	11333
Johnson, N. C.	631	Metke, A.	1559	Nelson, A.	3327	Rattigan, J. S.	8013	Martin, E.	11421
Hoskins, J.	685			McGarvey, M.	3865	Perks, J. R.	8055	Burke, J.	11793
Anderson, C.	693			Pozeck, C. W.	4171	Robb, D. T.	8189	Peterson, O. F.	12537

TWO YEAR MEN**Conductors**

Simpson, W.	330	Milbauer, F. G.	662	Frank, E. S.	6476	Brunod, D. F.	9982	Reynolds, F.	12494
Brand, A. L.	412	Dicke, C.	714	Hammond, C.	9670	Underwood, R. H.	10986	Hulthen, V.	13422
Swanson, H.	624	McGarvey, L.	718	Hynes, T. W.	9832				

Motormen

White, W.	541	Johnson, A., No. 1	581	Wolff, H. P.	643	Smith, O.	7439	McLaughlin, P.	13291
				Kane, J.	1309	Appel, T. C.	9539	Hynes, M. E.	13331

THREE YEAR MEN**Conductors**

Schilling, W. H.	1552	Reynolds, M. J.	4066	Mensen, C. E.	4118	Sendzikowski, C.	4938	Knight, R. J.	11930
Kropvel, J. V.	3084								

Motormen

Magnuson, N.	591	Looram, P.	639	Donovan, J.	789	Heidekrueger, A.	6033	Hennelly, M.	7553
-------------------	-----	-----------------	-----	------------------	-----	-----------------------	------	-------------------	------

FOUR YEAR MEN**Conductors**

Patterson, W.	560	Pallagi, S. J.	742	Landzaat, J.	6102	Ferguson, A., No. 1	10082	Benline, C. J.	12888
Folliard, M.	706								

Motormen

Scally, T. J.	1661	Hibma, S.	8591	Kean, J. F.	10377	Blemmer, L.	10819		
--------------------	------	----------------	------	------------------	-------	------------------	-------	--	--

FIVE YEAR MEN**Conductors**

Barron, J. A.	4584	Mulcahy, M. J.	10418	Payne, G. R.	12482	Thieben, E.	12576		
--------------------	------	---------------------	-------	-------------------	-------	------------------	-------	--	--

Motormen

Peterson, A., No. 2	737	Conway, T.	9579	Bardwell, H. F.	11475				
--------------------------	-----	-----------------	------	----------------------	-------	--	--	--	--

SIX YEAR MEN**Conductors**

Reibly, J. W.	558	Olson, F. E.	3842	Swift, E. J.	4436	Day, N. C.	10672	Campion, R. J.	11858
--------------------	-----	-------------------	------	-------------------	------	-----------------	-------	---------------------	-------

Motormen

Daly, J., No. 3.	163								
-----------------------	-----	--	--	--	--	--	--	--	--

SEVEN YEAR MEN**Conductors**

Lindquist, A. T.	3062	Hansen, H. W.	9286	Schromm, F. W.	10506				
-----------------------	------	--------------------	------	---------------------	-------	--	--	--	--

Motormen

Pries, L. F.	709								
-------------------	-----	--	--	--	--	--	--	--	--

EIGHT YEAR MEN**Conductors**

Mayer, N. D.	1472	Ferguson, A., No. 2	2230	Keane, M. T.	2868	McGoldrick, C.	5382	Brennan, H. F.	10768
-------------------	------	--------------------------	------	-------------------	------	---------------------	------	---------------------	-------

Motormen

Markette, R.	4949								
-------------------	------	--	--	--	--	--	--	--	--

NINE YEAR MEN**Conductors**

Jacobsen, J.	288	Berg, F.	528	Bagrowski, S.	11702	Redmond, J. A.	13196		
-------------------	-----	---------------	-----	--------------------	-------	---------------------	-------	--	--

Motormen

Name	Badge	Name	Badge	Name	Badge	Name	Badge
Conlon, J. J.	3479	Magram, J. W.	4049	Dignan, P. J.	7937	Last, O. A.	12411

TEN YEAR MEN

Conductors

Gasaway, A.	612	McGuire, M.	880	Schmidt, J. G.	2992	Miller, J. B.	8564	Benson, C. H.	9488
Anderson, O.	642	Heisterberg, C.	2626	Fennessey, J. J.	4182	Lundy, R. H.	9336	Porter, I. W.	12844
Barnes, W. J.	650								

Motormen

O'Connell, J.	801	Daly, J., No. 2.	11617
---------------	-----	------------------	-------

ELEVEN YEAR MEN

Conductors

Moore, P.	360	Carson, T.	538	Wangero, E.	738	Young, G. M.	3188	Dalton, E. M.	5410
Cronin, J. A.	508	Hedin, C.	554	Hanson, H. P.	748	Ryan, P. J.	3192	Downey, J. W.	5572
Ure, J.	510	O'Connor, H.	604	White, T. S.	754	Jacobs, A.	3890	Denash, M. E.	6922
Downey, C. A.	516	Duffy, C. J.	606	Wulff, H. W.	1090	Conlon, P. J.	4522	Glynn, F. J.	7580
Greenan, T.	526	King, W.	698	Murphy, W.	1304	Van Buren, H.	4804	Potts, J. D.	8290
Bell, G.	530	Henderson, W.	722	O'Connell, J.	1918	Howard, T.	4872	Barber, J.	8980
								Chamberlain, L.	10580

Motormen

Schuberth, N. C.	291	O'Connell, D.	749	Magram, J. W.	4145	Stegenga, J. A.	4245	Walsh, A.	12341
------------------	-----	---------------	-----	---------------	------	-----------------	------	-----------	-------

SEVENTY-SEVENTH

ONE YEAR MEN

Conductors

Taluzek, H. J.	322	Bradshaw, H. F.	2520	Erickson, E. G., No. 2	5176	Farrèll, J. F.	8250	Johnson, E. F., No. 2	10590
Fee, J.	478	Norton, H. F.	2558	Stewart, P. A., No. 2	5228	Parker, D. F.	8264	O'Connor, M. G.	10896
Garland, D.	896	Watne, C. J.	2806	Shortell, P.	5266	Klein, E.	8312	Voltmer, H. J.	10904
Cassidy, J. W.	938	Spratt, T. A.	2958	Adams, R. H.	5528	Grace, J. J.	8342	Bassett, C. T.	11104
Cunneen, P. A.	1138	Simpkins, J.	2982	Hickey, L. V.	5538	Doran, W. J.	8344	Matern, J. F.	11328
Renison, T. E.	1150	Smith, V.	3104	Johnson, C. W., No. 1	5602	Buchner, W. F.	8364	Phelps, J. D.	11810
Kruse, H.	1444	Carroll, M. J.	3174	McGann, P. J.	6292	Farrell, J. T., No. 3	8418	Hintz, R. T.	11918
Larson, F. E.	1486	Schmidt, O. F.	3230	Eckwall, F. O.	6386	Lundquist, E. A.	8508	Klasen, H. W. A.	11922
Crisman, M. E.	1508	Carroll, W. J.	3262	Welch, F. W.	6806	Glenday, H. J.	8684	Simpson, A.	12128
Geory, P. J.	1582	Louis, H. J.	3384	Peterson, C. W.	6834	Burns, E. G.	8844	Kobar, G. J.	8984
Burnett, H.	1618	Duhig, M., No. 2	3404	Barber, J. J., No. 2	6838	Honan, F. J.	8986	Murphy, J. P., No. 2	9174
Bowen, W. D.	1668	Benton, P.	3494	Gooley, J. B.	6934	Brown, J. M.	9184	O'Keefe, D.	13000
Larkin, J.	1696	Glimond, J. A.	3548	Nelson, W. A.	7006	Murphy, M.	9212	Blackall, M. J.	13014
Olson, R. E.	1726	Reardon, W. F.	3550	Schulte, C. G.	7112	LeBeau, E. I.	9252	Flanagan, J. J., No. 1	13048
Brittain, H. S.	1794	Haynes, J. L.	3624	Bowman, J. L.	7266	Brown, A. C., No. 2	9256	Davis, E. A.	13056
Carroll, W. D., No. 1	1868	Englehaupt, F.	3632	Joyce, D. F.	7268	Norberg, H. C.	7590	Hannon, J. A.	13140
Orton, F. W.	1934	Cullinan, J. F.	3696	Dwyer, J. F.	7528	Ryan, J. J.	7610	Cosgrove, M. J.	13486
Schlemmer, R. J.	2046	Walsh, J. T., No. 3	3818	Knoerr, C. G.	7650	Neilly, E. J.	9560	Mazurkiewicz, L. R.	13594
Whitenack, D.	2126	Kampf, M.	3888	Scheuer, F. G.	7676	Johnson, A., No. 1	9690	Donovan, J. J., No. 1	13736
Steinsultz, W. R.	2128	Pass, G.	3930	Alexander, C. E.	7682	Borrmann, L. C.	9960	Avery, C. R.	13838
Davis, C. A., No. 3	2214	Holloway, B. M.	3976	Schletez, G. W.	7728	Cavanaugh, E. J.	10230	Pugh, W. A.	14014
Downey, J. A.	2282	Custer, C. A.	4136	Miller, R. G.	7746	Valiquet, T. L.	10426	Cuculich, J. E.	14142
Halloran, J. J.	2356	Katter, A. C.	4264	Joyce, J. J., No. 1	8012	Heraty, P. T.	10500	O'Reilly, L. M.	14176
Sandquist, A.	2362	Leahy, E.	4628	Clark, P. J.	8148			Hull, F. J.	14224
Blumm, C. H.	2406	Creps, M. M.	4642					Taylor, G. R.	14236
O'Sullivan, J.	2446	Winters, W.	4888						
White, D. F.	2450	Johns, E. L.	4918						
Donahue, J. E., No. 1	2492	Wurster, W. C.	4924						
		Smith, J. C., No. 2	5030						

Motormen

Workman, H., No. 2	189	McCann, P.	1927	Lonnegren, E.	3063	Coffey, J.	6421	Gannon, P. J.	10931
Klein, L.	305	Mopert, M.	1937	McCarthy, R. J.	3371	Gritten, H. W.	6443	Westerman, C. E.	11067
Hanley, M. J.	443	Burke, W., No. 1	1997	Gartland, P.	3381	McCann, T. M.	6507	Loftus, J. R.	11369
Goff, G. D.	481	Watt, T. D.	2005	Green, V. J.	3391	Nicodemus, C. A.	6819	Fortney, P. A.	11379
Garrity, J. J.	557	Dunne, J. P.	2071	Conway, P. J., No. 1	3719	Lake, T.	7123	Schmidt, W. C.	11623
Murphy, L. J.	707	Leenheer, L.	2077	Johnson, A.	3779	Weight, A. L.	7233	Devermann, G. F.	11885
Darcy, P.	793	Mulcrone, E.	2109	Mulcrone, E.	3827	Butler, M.	7501	Dombro, S.	11999
Mellin, A. S.	863	Elmore, C. H.	2129	Kenneally, D.	3839	Wells, B.	7711	McNamara, J. J.	12021
Gleeson, M. J.	873	Hatch, O. A.	2165	Douglas, J.	4241	Dunne, M.	7907	Carroll, J. E., No. 1	12077
Hill, C. R.	943	Melaniphy, P. F.	2255	O'Malley, M., No. 1	4421	Babka, J.	7995	McGowan, M.	12107
McGrath, D., No. 1	961	Walsh, M., No. 2	2281	Smith, C. P., No. 1	4423	Kenny, J. F.	8035	Vriend, K.	12381
Hochleutner, R.	1129	Maguire, J., No. 1	2349	Dykema, J.	4437	Leske, W. A.	8349	Hannon, P. J.	12395
Lundquist, A. W.	1333	Beisiegel, J.	2373	Sally, M.	4461	Kuebs, A. H.	8439	Bunde, C. A. G.	12449
Gastreich, E.	1475	Allman, J. T.	2421	Lynch, W. J.	4607	Hackett, P.	8763	Gannon, J. F.	12911
Smith, C. H., No. 2	1487	Devlin, J.	2435	Hathaway, C. F., No. 2	5123	Bohne, W. C.	9307	Marcellis, P. J.	13317
Mielke, O.	1507	Madigan, W.	2507	Byrne, W. J.	5313	Dolan, R.	9979	Joy, E.	13397
O'Reilly, P.	1693	Norton, C. D.	2537	Tibbitts, E. F.	5397	Phelan, M. F.	10301	Callahan, L. J., No. 1	13457
Lester, W. E.	1861	Martin, W.	2543	Hanson, A. G.	5473	Wallace, H. W. A.	10327	Dunn, A. J.	13465
Dartsch, R. A.	1911	Koehler, E.	2557	O'Neill, J. J., No. 4	5773	Lange, A. H.	10661		
Hale, J. J., No. 1	1921	Harmon, J. P.	2629	Hill, W. M.	6127	Heckelman, G. H.	10727		
		Doyle, G. J.	2681	Maier, T. F.	6173	Nelson, C. J., No. 2	10905		

Bus Operators

Name	Badge	Name	Badge	Name	Badge	Name	Badge
Grunst, E. C.....	1752	Bystrom, O.	3722	Mander, H. A....	8098	Boldt, E. L.....	12806
Kerhart, F. F.....	2702	Cunningham, F. W.	8032	Alford, R. G....	9954	McDowell, J. C.	14100

TWO YEAR MEN

Conductors

Feulner, W. J....	574	Eul, F.	2652	Schehl, J. H....	5496	Hawkins, M.	9482	Elliott, J. L.....	11910
Nylander, C. E....	720	Fogarty, K. J....	2686	Geary, T.	5640	Carney, J.	9568	Lenihan, J.	12010
Iwicki, A. W....	900	Robinson, J. J....	2890	Everett, M. H....	5804	Spencer, C.	9688	Buchmeir, E. H.	12156
Keating, J., No. 3	1102	Mahoney, P. J....	3082	Gallois, H. J....	5894	Borgman, H. C....	10024	Jensen, W. M....	12168
Rauen, J. G.....	1468	Schreiber, A.....	3520	Strong, J.	5920	Brucks, T. N....	10194	Barker, C. E....	12604
Armstrong, W. D.	1502	Cermak, A.	3744	Allman, N. J....	7248	Siebert, W. K....	10208	Thompson, E. K.	12730
Duggan, J. G., No. 2	1536	Murphy, D. J., No. 1	3822	Ballard, J. M....	7714	Kerrigan, J. P....	10328	Quinn, G. J.....	12830
De Brey, G. M. 1596		Rolander, C. J. 3952		McGrail, A. T....	7820	Weber, J. P.....	10370	McKeon, P. J....	13054
Lawrence, M....	1774	Hammerschmidt, H. J.	4188	Shefcik, E. J....	7884	Geimer, W. A....	10664	McElligott, J. E.	13150
Post, R. A.....	1858	Hogan, J. B., No. 1	4340	Brown, J. A....	8246	Dugger, J. M....	10776	Sullivan, J. D., No. 1	13246
McGrath, T.	1954	Miller, J.	4360	Crozier, M. A....	8356	King, G. M.....	10852	Gleason, J. P....	13622
Byrne, T. A....	2270	McEvoy, D. J....	4440	Smith, R. H....	8374	O'Keefe, T.	11502	Stitt, W. E....	14104
Peterson, W. F. 2444		Berndt, P.	4638	Mack, R. V....	8610	O'Shea, M.	11576	Payton, G. R....	14392
Barry, P. J....	2504	Beyer, C. C....	4974	O'Neill, W. F., No. 1	8842	Nash, E. K.....	11818		
Clark, H. J., No. 1	2564	Mackessy, E. F. 5336		Woehlke, C. T....	9150	Fahy, T.	11880		
		Wolff, A. E....	5448	Patterson, T.	9180	Wilson, W. G....	11906		
				Lindholm, R.	9280	Bergeson, A. W.	11908		

Motormen

Haugh, M.	277	Erickson, G.	2229	Anderson, F. J., No. 1	3919	Boland, J. D....	7569	Zeisel, A.	10403
Hutchings, R., No. 1	715	McVerry, O.	2505	Church, R. A....	7685	Church, R. A....	7685	Rosenkilde, G....	10479
Nelson, J. P....	1305	McGann, A.	2505	Wiselius, A. J. 4249		Leske, W. A....	8349	Brown, F. J., No. 1	11441
Joyce, A. J....	1685	Egan, W.	2521	Eklind, R. E....	5111	Swanson, G. C. 9251		Baker, H. A....	11559
Oakes, H. T....	2061	Hansen, H. A. 2823		Bayer, W. L....	5729	Ross, H. E....	10071	Burk, G. E....	12457
				Hellwig, H.	7119				

Bus Operators

Highland, D. P. 5656		Bannister, R. R. 9858		Nicholson, T. L.	14282	Michielsen, W. J.	6009	Behrendt, B. W. 6965	
Michaels, C. F. 5928									

THREE YEAR MEN

Conductors

Walsh, A., No. 1	1342	Johnson, B.	2440	Carpenter, E. D., No. 2. 6764		McNamara, R. C.	10644	Flynn, J. T., No. 1	12940
Jensen, H. M....	1498	Pierson, J. M....	2516	Howard, E. J....	7098	Micetic, M. P....	10996	Ledder, A. B....	13020
O'Malley, P. A. 1534		Luscombe, T. G. 2624		Howler, J. F....	7328	Todd, B. E....	11662	Johnson, W. C....	13084
Maibuecher, F. G.	1762	Nelson, G.	2642	Stegemann, J. C.	7848	Meegan, J. W....	11878	Feykes, W. A....	13256
Brown, T. P....	1772	Bruchsauser, A. 2836		Schmidt, F. W. 9250		Spikings, D. J....	11884	O'Connor, J. F., No. 1	13286
Campbell, O. O. 1816		Collins, P. F....	2856	Thome, A. J....	9406	Lawler, W. E., No. 1	12080	Wells, R. C....	13390
Leach, H. W....	2048	Boettcher, A. H. M....	2998	Carey, C. A....	9438	Dunne, J. J....	12630	Cleahne, A. W....	13926
Kazda, F. L....	2386	Marousek, J....	3916	Airey, R.	10278	O'Connor, W. F.	12860	Lau, C. G....	14200
Roche, F. M., No. 1	2436	Morrissey, T....	4488	Gurney, J. E....	5438				
		Waters, P.	6478	Boddeker, M. C.	10542				

Motormen

Jonas, B. C....	4179	Sarther, M.	10553	Fox, W. H....	11557	Connolly, T.J....	12737	Polson, J. G. A....	13483
McMahon, J. F. 4225		Lindemann, C. H.	11335	Luzovec, J. L....	11673	Tjelle, O.	12851		

Bus Operators

O'Connor, J. J., No. 2	3438	Sandin, A. S....	6778	Cahill, P. J....	10313
---------------------------------	------	------------------	------	------------------	-------

FOUR YEAR MEN

Conductors

Richter, A. O.....	378	Greig, J. M.....	1560	Collins, M. G.....	2290	Ringberg, E. E. 8518	Schofield, H. J.....	11278	
Rehburg, E.....	654	Reynolds, P.	1724	Holm, S. O.....	2578	Anderson, W. M.	8928	Pitcher, R. J.....	12530
Olson, A. E., No. 1	1356	Lynk, E. J.....	1766	O'Connell, M. J. 4724		Sommers, S. B.	10118	Dixon, M. K.....	12728
Giesch, A. E.....	1376	Laursen, C.....	1962	Eriksen, H. V.....	5260	Keating, J. G., No. 4	10660	Curry, J.	12840
Zellner, F.	1404	Burgett, A. W....	2064	Oschatz, P. B....	5518			Hajek, J. G.....	13462
Loschetter, A. J.	1406	Baker, C. J., No. 2	2110	Anderson, R. W. 5798				Letsch, R.	13498
		Tegar, C. A....	2222	Moran, K.	5930				
				McArdle, J.	7106				

Motormen

Doolan, J. J., No. 2	2303	Miller, L. J....	2343	Leuwer, F. W....	8289	McGrath, J. J....	11437
-------------------------------	------	------------------	------	------------------	------	-------------------	-------

FIVE YEAR MEN

Conductors

Dowling, T. C....	1626	Jamieson, J., No. 2	2318	Morris, O. J....	5210	League, J. W....	5692	Wehrle, L.	10916
Bartholmey, H. J.	1786	Piker, A.	2496	Varney, E. N....	5234	Dacey, T. J., No. 2	8140	McGrath, R. J....	11318
Fleming, S.	1892	Tracy, B. F....	2662	Holford, E. S....	5236	Mandernack, G. E.	9516	McCabe, E. F....	11916
		Galvin, J. J....	4334	Burke, J.	5246			Russ, C. E....	13508
				Reilly, F. J....	5556				

Motormen

Name	Badge	Name	Badge	Name	Badge	Name	Badge
Burke, B. M.....	641	Walsh, J., No. 2	9305	Kotz, A.	11075	Hubble, A. M....	11639

SIX YEAR MEN**Conductors**

Salen, E. S.....	3330	Mempher, J. E.	6300	Donnelly, J., No. 1	8834	Brownlow, S. H.	9818	Lane, J. E.....	12064
Hefferman, D. ..	3898	Hamilton, E. H.	6990	Greenan, F.	9110	Bond, W. J.....	11296	Koppers, W. J..	12288
Goss, A. J.....	4746	Johnson, S.	8480			Wegner, W. A....	11508	Youts, W. J....	12734
Johnson, G. R....	5744							Boland, F.	13538
								Ray, W. W.....	14008

Motormen

Schachtschneider, W. F.	1821	McClannahan, C. W.	3251	Dwyer, P.	4111	Quinn, F.	11257	Nielsen, C. T....	13517
---------------------------------	------	----------------------------	------	----------------	------	----------------	-------	-------------------	-------

SEVEN YEAR MEN**Conductors**

Beabout, R. E....	932	Shank, L. R.....	3024	Noha, C. J.	5060	Bennett, J. W.	6744	Johnson, E. T., No. 1	13874
Ohlson, C. E.....	2010	Szytniewski, W.	3668	Conraths, P. E.	6194	Mahoney, W. A.	7060		
Hedberg, A. C....	2434			Fox, A. F.....	6206	Seery, T. F.....	10340		

Motormen

Rispen, R. F.....	101	Farrell, J. H., No. 2	10649	Flynn, J. F., No. 2	11801
-------------------	-----	--------------------------------	-------	------------------------------	-------

EIGHT YEAR MEN**Conductors**

Olson, J. O.	268	Maloney, J. J., No. 1	2018	Hasse, W.	4668	Gallagher, J.	8400	Sullivan, D., No. 2	13098
Kelso, H. V.	796	Morrissey, W....	3536	Dziewonski, L..	6054	Pierson, C. B....	10812	Waddell, L. M..	13532
Liston, P. J.....	1216	Watterson, W. J.	3870	Zehme, F.	7294	Barry, H. F.....	11696	Schroder, F. A..	13994
Frank, C. W.....	1644			Payne, P.	7838	Finn, T.	11732		
Mohrlock, W.....	1890			Maher, R. M....	8188				

Motormen

Eckert, R. C.....	1301	Nelson, C., No. 1	2469	Stefek, J.	2527
-------------------	------	----------------------------	------	-----------------	------

NINE YEAR MEN**Conductors**

Weisseg, W. B. ...	910	Wassner, W.	3130	Dorgan, W. H....	4834	Blais, J. B.....	9118	Henry, E. J.....	12226
Holloway, C. F.	1950	Piatt, A. L.....	3638	Frank, G. F.....	5650	Baxa, E.	9386	Smith, E., No. 2	14020
Quilty, J. J.....	2746	Moran, E. P.....	4280	Edwards, N. J.	7744	Campaigne, F. G.	12072		
				Kersten, E. W.	7766				

Motormen

Olson, O., No. 1. 1935

TEN YEAR MEN**Conductors**

Walsh, J., No. 2	826	Ayers, M. W....	2694	Rohl, J.	5374	O'Brien, C. C....	10228	O'Donnell, H.	11942
McNugent, P.....	1344	Meyer, H. E....	2728	Mahoney, J. J., No. 2	5910	Hinchcliff, W. E.	10256	Quinn, M. J., No. 2	12076
McHugh, R. J....	1482	Quigg, W.	3622	Olson, V. E.....	7926	Zapf, F. J.....	10564	Mills, J. C.....	13132
Pulaski, G.	1836	Donald, J. L....	3876	Haaker, E. L....	8932	Trafton, J. J....	11348		
Paradies, J.	1956	Lafferty, M....	5106						

Motormen

Larmon, C. J....	1395	Anderson, J., No. 1	2035	Skoglund, A.....	2551	Hannon, J.	2569	Hambrick, E. H.	6415
------------------	------	------------------------------	------	------------------	------	-----------------	------	-------------------------	------

Bus Operators

Shanley, M. J. 1004

ELEVEN YEAR MEN**Conductors**

Buckley, R. E....	422	Ellerbeck, R. P.	1986	Naumann, O. L.	4302	Tierney, M. H.	9880	Campbell, V. G.	11668
Watson, G. J....	814	Hacker, L. J....	2076	Hegburg, C. G.	4354	Balling, W.	10078	Latalla, F. M....	11706
Anderson, E. C.	1148	Riel, W. T.....	2190	Gunther, W. H.	5094	Bedore, E. G....	10266	Wacholz, A. E..	12116
Kamin, C. W....	1158	Roessler, F. H.	2344	O'Donnell, T. ..	6072	Reilly, M. J....	10460	Centner, J. L....	12182
Blum, F. E.....	1392	Nehls, E. J.....	2458	McNichols, F. ..	6302	Whalen, A. P....	10534	Casey, W. J....	12348
Britton, J. J....	1450	Barber, J., No. 1	2502	Blakley, J. D....	7532	Browne, J. J....	10654	Wood, W. K....	12552
Powers, G. A....	1586	Airey, G. J....	2546	Simmons, E. M.	8664	Hideen, E.	10842	Moore, A.	13068
Simpson, J. P....	1688	Loeser, F. J....	2830	McIver, F. J....	8838	Lawler, W. E., No. 2	11290	Crowley, C. F..	13280
Hankins, E. H.	1784	Leonard, P....	2838	Reiss, R.	9152			Mischnick, C. J.	14546
Byfield, W.	1848	Cuchna, J. S....	3402	Urquhardt, D. H.	9868				
Mosbarger, E. E.	1920								

Motormen

Name	Badge	Name	Badge	Name	Badge	Name	Badge	Name	Badge
Lester, A. J.	2321	Thomsen, I. W.	2643	Toolis, M.	3175	Keeler, C. F.	9273		

SIXTY-NINTH

ONE YEAR MEN

Conductors

Mudra, J. H.	236	Kelly, R. P.	2860	Dobson, W. H.	4342	Schmidt, H.,		Janda, E.	10294
Davis, O.,		Cermak, J.	2920	McCusker,		No. 1	7598	Thurston, C. E.	10436
No. 1	552	Mulqueen,		F. J.	4420	Queenan, M. M.	7602	Ravane, M. T.	10674
Brown, T.	572	M. M.	2970	Murray, J. W.	4566	Shannon, H. J.	7640	Detloff, J. J.	10880
McInerney,		Thomas, P. J.	3094	Ryan, J. B.	4578	Glosa, T. J.	7956	Adams, T. E.	10908
M. E.	1052	Maze, C. M.	3098	Smith, F. R.	4684	Nelson, G. W.		Donnelly, D.	11080
White, A. R.,		Schmidt, F. J.	3112	Dodd, M. A.	4814	No. 2	7960	Woelfle, A. E.	11338
No. 2	1172	Liden, L. L.	3198	Knerr, J. A.	5166	Byrne, T.	8440	Deran, T. J.	11582
Donnelly, T.	1528	Brucker, H.	3274	Mulvihill,		Belskis, V.	8492	Hyncik, J.	11742
McNeil, T. V.	1606	Pitcher, D. N.	3290	W. M.	5488	Davis, O. No. 2	8556	Bloomstrand,	
Mazeika, W.	1638	Senkpiel, G. F.	3348	Manning, J. J.	5498	Kelly, J. J.		A. H.	11862
Thompson,		Frank, C., No. 1	3350	Wilson, J. R.	5524	No. 2	8566	Harkness, W.	12090
W. H.	1846	Murray, L.	3604	Tennison, H. J.	5580	Castka, F.	8744	Quinn, W. J.	
Gleason, H. A.	1850	Perry, W. J.	3620	Eichten, H. J.	5832	Robinson, E.	8908	No. 1	12308
Kloeze, R.	1886	Miller, F.	3680	Willer, O. H.	5924	Leary, F. D.	9010	Needham, M. J.	12390
Kennedy, H. J.	1940	Kenny, J., No. 1	3700	Voelker, L. C.	6014	Larkin, P. J.	9404	McLindon,	
McNulty, E. P.	1978	Buerger, A. M.	3736	Feeley, T. J.	6050	McMahon, J. J.	9412	B. C.	12456
Sullivan, J. J.	2186	Reidy, M. J.	3766	Frank, A. A.	6332	Gannon, J. D.	9532	Johnson, J. M.	12754
Reese, A. F.	2200	Duffy, J. M.,		Michaels, J.	6392	Daniels, C. C.	9750	Harper, L. A.	13156
Liston, J. J.	2276	No. 2	3942	Knight, G. H.	6720	O'Connor, P.	9756	Heraty, J. T.	13448
Warren, P. F.	2456	Lowe, E.	3982	Harkin, J. J.	6776	Quinn, W. J.		O'Connor,	
Sulka, J. J.	2466	McAllister,		Deneen, J. J.	6786	No. 2	9890	M. A.	13972
Theisen, W. J.	2772	J. J., No. 2	4074	Shanley, F.	7272	Costello, J.	9998	McGowan, P. J.	14034
Shaffner, M.	2816	Abderholden,		Stevens, E. J.	7486	Kucera, A.	10000	Vyzral, F. J.	14106
Clark, J. W.	2854	E.	4320	Schroeder,		Roache, T. P.	10154	Lyons, R.	14388
				H. W.	7560				

Motormen

Adcock, J. N.	331	Tams, J.	2423	Stout, C. J.	3571	Naughton, T. F.	6647	Burns, C. G.	10139
Walsh, P. F.	367	Lammel, W. G.	2611	Kenney, T. J.	3877	Eyres, M., No. 1	6751	Scanlon, C. P.	10161
McGrath, J.,		Peterson, H. V.	2927	Roth, M. V.	4043	Eaton, W.	7211	Cunningham, T.	10187
No. 2	411	Zupert, J. P.	3017	Gradt, C. E.	4127	Parker, E. M.	7533	Short, B.	10383
Patterson, J.	551	Hastie, T.	3021	Kelly, T., No. 2	4181	Fitzpatrick, J.	7637	Becker, F. C.	10489
Collins, M. J.	653	Hight, W. H.	3029	Jeffers, C.	4269	Stepanek, F.	7677	Johnson, V. E.	11103
Jorgenson, P.	991	Ericksen, C.	3041	Lucid, F.	4287	Raddatz, H. F.	7691	Rudman, T. S.	11505
LaCloche, M.	1051	O'Brien, J.		Boyer, J. F.	4357	Collins, R. D.	7737	Branigan, D. P.	11899
Bossi, H. J.	1223	No. 5	3067	Umbach, J. J.	4629	Givin, A. M.	7769	Barker, F. J.	11927
Minton, A. C.	1321	Maloney, T. J.	3077	Kabon, G. W.	5199	McGuire, P.,		Ross, J. D.	12117
Cameron, D. G.	1463	Coates, J. D.	3291	Fogarty, C.	5413	No. 1	8303	Cooper, M.	12127
Heinehan, P.	1513	Connolly, J.		Block, A. E.	5457	Murphy, P.	8319	Grams, G. A.	12439
Drumby, P.	1617	No. 1	3319	Manzke, A. F.	5609	Doyle, J. F.	8569	Smith, F. C.	13005
Radke, D. E.	1883	Spain, P.	3321	Talcott, L.	5639	Ulrich, R. V.	9809	O'Hare, F. J.	13319
Sinkler, J.	1889	Hosang, C. F.	3347	Gillooley, E. J.	5983	Covey, J. J.	9851	Reiff, H. G.	13365
Dinovo, S. S.	1909	Montgomery, J.	3425	Quinn, J. J.	6251	Fiala, J. E.	9899		
Sullivan, J. F.,		Ostermeyer,		O'Kane, H. J.	6573	McNamara,			
No. 3	2089	W. F.	3481			W. F.	10027		

TWO YEAR MEN

Conductors

Sinclair, J. L.	622	Buckingham,		Ericksen, G. A.	3926	Stahl, W. J.	6732	Wilkey, M.	10132
Konecke, J. S.	690	M. R.	2460	Nicholas, L. A.	4064	Rapp, E. A.	7158	Duggan, P. D.	10250
Ross, W. C.	774	Cannon, W. J.	2976	McCauley,		Fitzgerald, J. J.	7170	Mahoney, P.	10546
Regan, M. J.	870	Gerard, P. F.	3068	H. W., No. 2	4268	Finnegan, W. T.	7368	Kienzle, W. R.	10648
Brown, J.	1372	Taylor, A. E.	3132	Schultz, R. L.	4330	Abrahamson, L.	8714	Andrews, R. A.	10778
Lyons, J. J.,		Jones, T. R.	3302	Quick, M. N.	5112	Sherman, D. J.	8804	Carlson, J. A.	11896
No. 1	1428	Suma, F.	3414	Mulcahy, W. F.	5912	Woodville, J. F.	8898	Hanrahan, T.	12946
Boal, J. A.	1528	Kanton, J. T.	3576	Letkey, J. T.	6186	Watson, J. R.	9186	Bode, H. C.	13250
Mulcahy, J. A.	2358	McDermott, H.	3676	Kelly, J. T.	6384	Lentz, P. T.	10092	Michaels, E. J.	14360
		White, W. F.	3710	Zeplin, H. G.	6676				

Motormen

Sinkler, W. A.	735	Gallina, F.	2415	Grace, T. B.	3911	Vogt, L.	7161	Faulkner, J. W.	10441
Gibbons, J.	921	Glass, N.	2877	Schaefer, E. C.	5463	Hillard, W. M.	8069	Sheahan, T.	11131
Murphy, M. J.	1037	Duffy, J.	3071	Hines, G. R.	5547	Kerwin, P. J.	8171	Wilson, J.	12541
Franks, J.	1251	Delohery, J.	3299	Winsor, J.	5587	Ouigley, W.	10259	Cahill, D. D.	12711
McPolin, F. J.	1619	Kross, W. E.	3341	Flynn, G. J.	5619	Henning, A. C.	10411	Cox, H. J.	12905
Austin, M.	2245	Hendry, W.	3741	Johnson, J. T.	6377				

THREE YEAR MEN

Conductors

O'Brien, M. T.	1156	Schneider,		Schenold, H. J.	3662	Boren, H. H.	4970	Duffy, E.	10774
Decker, F. R.	1410	M. H.	2688	Wagner, J. P.,		Pietsch, P. F.	5362	Kall, E. A.	11590
Cunnane, J.	1467	Arnold, J.	2898	No. 1	4090	McCourt, J. F.	9168	Sweeney, A. M.	11682
McMahon, P. J.	1544	Keane, J. P.,		Korasky, A. T.	4764	Barnes, J. J.	9570		
		No. 2	3652						

Motormen

Clancy, G.	285	O'Neill, P.	1519	Peters, S. A.	3011	Murphy, J. I.,		Kreutz, A. J.	12515
Coyne, W. P.	1149	Cox, M. J.	2133	Devitt, J. J.	4117	No. 2	10951		

FOUR YEAR MEN

Conductors

Name	Badge	Name	Badge	Name	Badge	Name	Badge
Rumsfeld, H. J.	344	Hansen, H. P.	3072	Hochstadt,		Maloney, J. E.,	
Luebeck, C. H.	1360	Hackbarth,		C. F.	3306	No. 2	8642
Gradt, H. C.	1860	H. G.	3256	Buhring, A. W.	4998	Cornell, W. H.	10362
Hyland, J.	2462			Carew, D. G.	6498		

Motormen

Teufel, W. J.	347	Burke, J., No. 2	6175	Shannon, S.	6277	Kruse, H.	6391
Tully, P. J.	3819					Callaghan, J. J.	
						No. 2	7641

FIVE YEAR MEN

Conductors

Lynch, J., No. 2	1246	Flynn, P. J.	2144	Miller, H. B.	6092	McGuire, H. J.	10300	Williams, C. H.	12756
Johnson, W. P.	1520	Gleason, W.	3026	Siefried, M.	7476	Gillespie, J. P.	10772	Proteau, F. W.	14080
Wizeick, F.	1894	Foertsch, G. J.	4948	Malquist, R. A.	9372	Priscal, E.	11870		

Motormen

Quinlan, C.	199	Hederman, J.	2807	Noonan, J.,		Oelschlegel,		Jordan, J.,	
Driscoll, J. A.	1413	McNicholas,		No. 2	3303	F. L.	8545	No. 2	10425
Weber, P. E.	2225	T. J.	2843	O'Connell, M.,		Jones, W. R.	8987	Watt, R. W.	10463
				No. 2	3379				

SIX YEAR MEN

Conductors

Buckley, J.	652	Funk, H. F.	3858	Johnson, A. V.	10144	Fournier, W. J.	12370	Raebig, F. C.	13444
Brichta, L.	1478	Naughton, J. P.	9906	McGuire, J. E.	11460				

Motormen

Murray, J.	491	Brennan, T.	4193	O'Connor, D.	9147	Daoust, O. J.	11029	Pearson, A. G.	13477
------------	-----	-------------	------	--------------	------	---------------	-------	----------------	-------

SEVEN YEAR MEN

Conductors

Hallinan, F. W.	1308	Jones, B. B.	4490	Dawson, T. J.	6504	Machalz, F. J.	8000	Conwell, J. E.	12706
Cunningham,		Deuser, A.	5896	Domke, M.	7526	Brabianocki, F.	10006		
J. J.	3210								

EIGHT YEAR MEN

Conductors

Hester, P. J.,		Clough, S. H.	4750	Phillips, E. E.	7876	Leaverton,		Callaghan, T. J.	12282
No. 2	2808	Allen, E. L.	5516	Jackson, W. J.,		A. L.	10516	Powicki, J. J.	13728
Burzlaff, W. C.	3614	Nash, T. A.	6408	No. 3	7922				
Louzein, S. B.	3956								

Motormen

Jeffers, W. F.	3337	Edmonson,		Kasper, W. A.	10795
		C. B.	7097		

NINE YEAR MEN

Conductors

Stewart, D. J.	2254	Berg, A. W.	2602	Wilkie, F. H.	5072	Reed, A. I.	6410	Clancy, H. T.	9148
Borchardt, C.	2394	Shaddon, J. J.	3734	Pfrommer, J. J.	5562	Keppler, F. P.	8914		

Motormen

McGuire, P.,		Finnegan, R. J.	1699	Egan, E.	3249	Fahey, J.	7285	Anders, O. H.	10785
No. 2	787	Brennan, O. F.	3125	Holmes, S. E.	3671	Wagner, P. A.	8075	Bell, T., No. 2.	12015

TEN YEAR MEN

Conductors

Grady, J. C.	1464	Durchanek,		Leonard, C. J.	3508	Kehoe, J. F.	5884	Nolan, M.	10002
Kill, F. A.	1602	J. J.	2348	Olson, O. C.,		Porter, W. H.	6016	Cerney, P. J.	11008
Owens, J. E.	1898	Sandquist, J. H.	2590	No. 1	3838	Lux, F. E.	6094	Greene, J.	11990
Woltman, W.	2258	Bailey, F. J.	2862	Hillgoth, G. J.	4848	O'Shea, T. J.	8124		

Motormen

Jurgenson, H.	225	McGourty, T.	2723	Erlhoff, J.	3087	Volk, J. G.	3181	Roche, D.	3883
---------------	-----	--------------	------	-------------	------	-------------	------	-----------	------

ELEVEN YEAR MEN

Conductors

Maloney, J. J.	256	Scherer, F. C.	2670	Dybicz, T. A.	4152	Coughlin, J. A.	10120	Brownley,	
Butler, W. J.	462	Ericksen, E.	3194	Turek, C. F.	5624	Burke, J.,		W. G.	11012
Pearson, W. F.	484	Calp, R. A.	3196	Walsh, M. W.	6222	No. 4	10136	McDonald, M.	11034
Dulfer, A. P.	1164	Foley, T. F.	3202	Honings, J. D.	6428	Sanderson,		Beranek, J.	12508
O'Reilly, F. P.	1204	Hayes, M. J.	3228	Schmitz, A. F.	7064	T. P.	10206	Mackie, R. F.	13684
McGoldrick, J.	1254	Frank, L.	3320	Unrath, G.	7456	Kean, J. E.,		Durkin, J.,	
King, P. J.	1522	Bening, F. J.	3486	Manena, J. F.	9798	No. 1	10302	No. 1	14144
Sheridan, J. E.	2006	Sweeney, P. F.	3998						

Motormen

Name	Badge	Name	Badge	Name	Badge	Name	Badge	Name	Badge
Cleary, J.	1615	Cassidy, T.,		Martin, J. H.	3163	Hardin, J. J.	8221	O'Connor,	
Foley, R.	1761	No. 1	2979	Ryan, E. J.	3209	Ryan, J., No. 6.	9601	P. F.	10561

ARCHER

ONE YEAR MEN

Conductors

Considine, P. M.	808	Goulden, G. R.	2900	Gravell, R. L.	5630	Clarke, J. P.	9048	Farrell, W.,	
Becker, H. J.,		Schmook, C.,		Feipel, N. A.	6078	Vahl, H. A.	9358	No. 1	11052
No. 1	812	No. 1	2904	Callinan, M. A.	6330	Laska, C.	9392	Sheery, B. A.	11058
Heinrich, S. J.	818	Ruler, R. L.	3012	Ryan, A. F.	6660	Eichendorf, J.	9422	Tichy, E. E.	11392
Maslowski, L. J.	954	Marks, J. L.	3090	Keating, D.	6996	Baggech, G.	9712	Merrill, C. E.	11654
Drankie, A.	1050	McCarthy, F.	3472	Burke, J. P.	7066	Krueger, A. F.	9728	Slattery, E. F.	11734
Sagot, A.	1222	Egan, John	3502	Oakey, G. J.	7174	Brownlow, S. H.	9818	Kamien, W. B.	11780
Byrne, J. J.	1274	Schultz, H. G.	3518	Rebmann, D. F.	7180	McIntyre, J. W.	9942	Kent, J. F.	11808
Tallent, Fred	1346	Rybar, John	3650	Kelly, T. J.	7418	Saunders, W.	10036	Uhlir, J. F.	11816
Tanke, W. J.	1412	Griffin, R. S.	3812	LaBarge, A. G.,		Oakes, G. A.	10048	Goltz, E. R.	12098
Finn, J.	1442	Mulconrey, M.	4080	No. 1	7446	Whitman, P. B.	10214	Vogel, O.	12352
Enright, D.	1922	Felsch, Geo.	4088	Cotter, C.	7514	Maher, J. E.,		Johnson, V.	12388
Fleming, W. J.	1968	English, J.	4222	Viland, A. R.	7572	No. 2	10262	McGrath, J. E.	12536
Hanmer, T. H.	2114	Schoolian, H. A.	4248	Zelis, W. A.	7632	Binette, J. H.	10304	Weiss, L. A.	13312
Schultz, F. A.	2266	Soch, L. T.	4394	Kubiak, F. A.	7800	Rackow, E.	10384	Siebert, H. R.	13350
Jung, E. W.	2284	Bragiel, J. E.	4398	Kopping, F. A.	7874	Herold, R.	10478	Schurko, M.	13520
Drake, C. E.	2304	Fischer, W. C.	4402	Mander, H. A.	8098	Eger, E. W.	10532	Malinowski, O.	13814
McKay, J. T.	2368	McDonald, R. F.	4472	Zaynor, F. E.	8474	Pfommer, G. J.	10650	Winters, L. J.	13916
Cockle, Geo.	2482	Campbell, P.	4622	Troike, C. A.	8500	Rozak, G. M.	10700	Nadziezko, A.	14002
Melka, J.	2594	Glass, S. J.	4910	Sulaski, T. G.	8612	Halloran, J. A.	10802	Ott, R. F.	14058
McVay, J. E.	2622	Sheil, P. W.	4976	Schulthies, P. A.	8628	McCarthy, E. C.	10974	Holding, J. H.	14252
Kelly, D. L.,		Thierry, L. L.	5324	Hinz, A. E.	8754	Rodden, T. H.	10980	Pacholski,	
No. 1	2682	McWilliams,		Carlson, C. S.	8930			A. E.	14366
O'Keefe, T. M.	2812	E. J.	5606	Jesen, S. B.	8950			Wivinis, J. J.	14520

Motormen

Wixon, C.	385	Hruby, Dan.	2649	Hagemann, J. A.	3721	Smith, W. E.,		Petersius, F. A.	10967
Macek, F.	403	Walker, M. L.	2659	Keane, J. F.	3783	No. 1	6937	Clancy, P. J.	11155
O'Donnell, J. P.	429	Bashelir, R. H.	2667	Blair, J. W.	3785	Krueger, A. T.	7079	Henary, A.	11291
Neumann, O.	567	Carlson, E. C.	2699	Conway, P. P.	3915	Kearns, L. E.	7325	Wright, H. W.	11455
Kiener, A. G.	689	Zaubier, A. N.	2703	Kopping, F. F.	3983	Strohacker, C.	7981	Schurwanz,	
Crinion, P. F.	1215	Flood, T. J.	2795	Tieser, P.	4033	Malcos, A.	8297	W. E.	11551
Baker, C. H.	1277	Kennelly, J. J.	2821	Connolly, D.	4151	Schultz, C. J.	8309	Kura, F.	11741
Regneir, W.	1291	Brady, George	2841	Fogarty, F.	4211	Kabana, Fred.	8369	Prucha, C. G.	11795
Grant, James	1301	Fleming, G. J.	2845	Block, J. F.	4219	Jacobson, J. E.	8599	Holland, F. A.	11731
O'Grady, M.,		Buckley, D.	2915	Smith, W.,		Freitag, A. E.	8709	Deinert, Ed.	11937
No. 2	1365	Heise, W. H.	2929	No. 3	4243	Balke, Ed.	8743	Goetz, O.	12083
Maracek, O.	1445	Forman, O. M.	2981	Longhauser, A.	4291	Yost, W. E.	9017	Forgie, J.	12131
Chamberlain, J. E.	1489	Johnson, Thos.	3201	Rossman,	4603	Connolly, J. T.	9129	Miotke, J.	12293
Wagner, F.	1509	Griffin, T. G.	3219	Dunklau, H. J.	4929	Gahan, B. L.	9157	Kalato, Thos.	12643
Enright, P. J.	1645	Heavy, J. J.	3301	Motuelle, F. A.	4941	Sullivan, M.	9295	Whalen, Wm.	12645
Collins, D. F.	1695	Blaha, Geo.	3311	Harmeson, J. E.	5327	Lange, H. R.	9847	Fleming, P.,	
Brown,	1795	Wunderlich, A. H.	3411	Rak, J.	5493	Wessell, Fred	9973	No. 2	12661
Bennett, W. E.	2273	Nagle, P.	3453	Siebenaler, J.	5759	Misek, J. J.	10359	Fraser, C. A.	12935
Falsbutt, Geo.	2399	Babbe, J.	3477	Martens, L. J.	6051	Schreffler, A. W.	10399	Grabinski, J. A.	13023
O'Kane, P.	2587	Shattuck, M. R.	3499	Mahoney, M.	6059	Kitteier, P. J.	10535	O'Grady, A. J.	13061
Larson, M.,		Sullivan, G. F.	3451	Wals, J. R.	6247	Kaliski, Thos.	10591	Klima, J. W.	13213
No. 1	2615	Daly, J. G.	3599	Daley, J. A.	6579	Kauk, Val.	10647	Sohns, F. C.	13491
Schurwanz, C.	2641	Bonfield, J.	3689	Samuels, D. F.	6707	Pfeiffer, A. A.	10767	Corless, H. M.	13503

TWO YEAR MEN

Conductors

August, F. S.	972	Peterson, H. E.	2376	Haley, M. E.	3240	Schmook, C.,		O'Donnell, J. J.	11728
Vralsted, L.	1448	Minich, R. M.	2512	Egmer, G. A.	3540	No. 2	6232	Vones, J. J.	11812
Landin, D. W.	1518	Klimes, R.	2654	Ejka, S. L.	3664	Bohse, C. F.	6662	Maher, J. M.,	
Moos, W. C.	1640	Wagner, Max	2800	Wack, J. T.	3892	Tenelinger, G. J.	7674	No. 1	11814
Erick, Ed.	2136	Balderman, S. C.	2928	Gutnecht, H.	3950	Stortz, T. A.	7734	McMahon, P. J.	12030
Lagerstrom, E.	2176	Spitz, H. C.	3058	Gasdiel, W. F.	4678	Miller, H. E.	9074	Leahy, W. J.	13242
O'Brien, J. J.,		Eichmann, G. G.	3216	Schaeffner, H. M.	5182	Hajek, A. J.	11492	Larsen, W. A.	13702
No. 2	2256								

Motormen

Traznik, E. E.	587	Wessel, H. H.	3293	Arnesson, C. R.	4071	Hansen, J. J.	6025	Dingledine, H.	9241
Kirkpatrick, J.	2049	Bening, J. F.	3495	O'Grady, M. J.,		Walthers, L.	6597	Hanley, W. J.	11757
Bohse, H. H.	2417	Todd, C.	3545	No. 1	4697	Sieja, Geo.	6761	McNulty, K. B.	11973
Lafferty, E. F.	2657	Minogue, Jas.	3651	Johnston, Rd.	4975	Moore, W. J.	6901	Golden, John	13427
Hamrin, A.	2879	Marren, M.	3683	Boshma, S. J.	5421	Hart, A.	7603	Murray, P. J.	13487
Lawrence, A.	3265								

THREE YEAR MEN

Conductors

Prendergast, L. M.	458	Wachowski, F. J.	1672	Casey, P. T.	3284	Clair, R. E.	7618	Murphy, E. T.	11116
Walsh, N. M.	1044	Kubiak, W. B.	2056	Famera, J.	3296	Smith, A. L.	8648	McNicholas, W. F.	11284
Haak, H. A.	1292	Krichmus, A. T.	2264	Phelan, M. J.	3392	Corridon, P.	9258	Buchanan, T. J.	13810
		Cullen, R. V.	2684	Fandorf, W. C.	3758	Burger, W. A.	10330		
				Shereck, A. P.	4876				

Motormen

Name	Badge	Name	Badge	Name	Badge	Name	Badge	Name	Badge
Buckwell, I.	687	Bronseil, J.	3697	Roubik, C. J.	6435	Prell, R. W.	8341	Frejlach, M. J.	11595
Beckett, J.	3569	O'Rourke, T. J.	3873	Hynes, Thos.	6827				

FOUR YEAR MEN**Conductors**

Stark, H. V.	1232	Reck, M. J.	3142	Hefferan, Ed.	3746	Humphrey, E. H.	6938	Kennedy, P. J.	9758
Fisher, J. J.	2130	Kleidon, John ..	3322	Robinson, P. J.	4132	Andrews, V. J.	7188	Gerig, Geo.	11618
O'Neill, J. F.	2548	Rau, J. H.	3656	Heene, A. A.	5310	Simons, P. J.	8882	Wede, J. H.	12448

Motormen

Maloney, J., No. 2	6243	Gustafson, A. C.	7277	Black, G. R.	9879	Bandusky, W.	10603	Dresden, F.	11573
		Goodrich, M. R.	9811						

FIVE YEAR MEN**Conductors**

Grubbe, O.	1058	Fitzsimmons, J. E.	3422	Heller, C. E.	3672	Beisel, A. P.	4262	Berls, F. J.	14474
				Spraul, W. P.	3726	Dewick, C. B.	8328		

Motormen

Hanlon, Jas. 9399

SIX YEAR MEN**Conductors**

Lynch, M.,
No. 2 13204 |

Motormen

Kearney, W.	3821	Thatcher, Fred.	8723	Ulmer, A. A.	11117	Knowski, A. J.	12485
------------------	------	----------------------	------	-------------------	-------	---------------------	-------

SEVEN YEAR MEN**Conductors**

Beery, T. S.	2758	Lasky, P. J.	7688	Schott, L.	8854
-------------------	------	-------------------	------	-----------------	------

EIGHT YEAR MEN**Conductors**

Coughlin, T. J., No. 1	1576	Thomas, D. J.	1982	Vlk, J. J.	2870	Scanlon, P. J.	6544	Baker, A. J.	11350
		Stahl, J. R.	2142	Fick, J. H.	3648				

Motormen

Kostaniek, A. 2003

NINE YEAR MEN**Conductors**

Otto, A. W.	2148	Mooney, J. P.	3574	Grannon, R. J.	5052	Mucynski, F. T.	10342	McConnell, C. A.	11176
Ryder, J. P.	2566	Murray, J. J. No. 1	3626	Gallagher, A. F.	6192				

Motormen

Fernett, V. J.	1391	Schulz, C. A.	3579	Naughton, J. J.	10729	Krause, C. A.	11205
---------------------	------	--------------------	------	----------------------	-------	--------------------	-------

TEN YEAR MEN**Conductors**

Larson, Fred	3792	Klikunac, J. G.	7494	Zimbrich, F. C.	8254	Bennis, J. P.	11126	Bielski, F. S.	11772
-------------------	------	----------------------	------	----------------------	------	--------------------	-------	---------------------	-------

Motormen

O'Gara, T. F. 10323

ELEVEN YEAR MEN**Conductors**

McMillen, W. F.	170	Baugh, W. C.	2574	Masterson, J. F.	3510	Renken, H.	3910	Filiatreau, L.	9408
Kahrer, C. F.	998	Lannon, J. W.	2636	Copithorn, W. H.	3528	Fennessy, J. D.	4076	Javoraki, T.	9444
Fedigan, J. A.	1328	Powers, J. M.	2742	Innes, Alex.	3544	Isaason, J. S.	4338	Kenny, T. T.	9466
Swiontokowski, J.	1480	Conway, F. J.	2804	Taylor, S. J.	3556	Foley, M. E.	5752	Freith, G. J.	10026
Grubner, W.	1652	Block, F. L.	3224	Lynch, E.	3564	Powers, C. J.	6736	Falsey, J. P.	10618
Flanders, Ed.	2530	Burandt, P. G.	3326	Conway, M. J.	3724	Bessette, A. L.	7042	Gallagher, J. J.	13030
		Neitzel, H.	3454			Murray, F. E.	8360	Pence, E.	13718

Motormen

Flynn, P. 9101 Stuewe, O. A. 10159

LAWNDALE

ONE YEAR MEN

Conductors

Name	Badge	Name	Badge	Name	Badge	Name	Badge	Name	Badge
Lewerenz, W.....	106	Cahill, J. J.....	3670	Dillon, F.....	5764	Cummane, W.....	7548	James, E.....	10218
Vlach, O.....	136	McCarthy, M.....	3752	Handley, E. C.....	5852	McShane, R.....	7564	Hagstrom, H.....	10446
Andrae, F.....	336	Adrian, A. A.....	4178	Halford, A.....	5866	Patrick, H.....	7575	Berber, E.....	10708
Novak, J.....	762	Whelehan, W.....	4286	Hester, P.....	5868	Ewers, W.....	8112	Olesky, S.....	12792
Johnson, T.....	1818	Maire, W.....	4428	Fischer, S.....	5932	Schurer, J.....	8282	Dietz, E.....	12944
Heinz, R.....	2008	Brophy, J.....	4650	Lohrentz, T.....	6284	Krug, H.....	8300	Engelmann, W.....	13306
Washco, C.....	2178	Cox, H. O.....	4688	Mitchell, J.....	6396	Deets, H. F.....	8482	McKiernan, F.....	13612
Miller, G. P.....	2828	Reilly, D.....	5090	McInerney, J.....	6568	Bohlen, W.....	8568	Sullivan, T.,	
McGuire, F.,		McKiernan,		Doll, R.....	6802	Holan, R.....	8596	No. 2.....	13856
No. 1.....	3154	J. T.....	5354	Herek, J.....	7046	Hanley, B.....	9012	Franzen, W.....	13894
Hoelzel, V.....	3602	Waddell, O.....	5474	Rausch, C.....	7460	Smrt, C.....	9096	Frey, C.....	13940
Tarsa, E.....	3654	McGuire, F.,		Benishek, R.....	7490	Koukol, J.....	9134		
		No. 2.....	5706						

Motormen

Joyce, J.....	195	Cinkus, J.....	5011	Bring, G.....	7819	Reidy, J.....	8885	Connolly, H.....	10495
Abrams, S.....	235	Martin, T.....	5389	Hanily, J.....	8041	Sullivan, W.....	9073	Keating, J.,	
Redieske, W.....	293	Hartnett, J.....	5395	Cameron, S.....	8079	Schwoma, C.....	9243	No. 1.....	10539
Hause, H.....	1011	Maire, O.....	5497	Krygman, J.....	8109	Schick, G.....	9357	Jones, F.....	11195
Venturelli, O.....	1593	Satzke, A.....	5593	McNamara, M.....	8145	Rowan, B.....	9391	Ottisch, H.....	11923
McAuliffe, T.....	2315	Eskel, C.....	5635	Sweeney, M.....	8147	O'Connor, P.....	9555	Moroney, T.....	11941
Higgins, B.....	2531	Groford, J.....	5893	Manson, F.....	8185	Tuchowski, P.....	9633	Anderson, J.,	
Zuhoski, J.....	2547	Naegel, L.....	6273	Nelson, H.....	8323	Eggerstedt, C.....	9635	No. 2.....	12085
Bradley, J.....	2651	Borss, E.....	6317	Reidel, H.....	8347	Rogers, M.....	9681	Bear, C.....	12101
Kasper, L.....	2673	Halligan, M.....	6359	Hansen, C.....	8487	Shaw, A.....	9821	Keating, J.,	
Schafer, F.....	2683	Boschan, P.....	6785	Barrar, W.....	9637	Otto, A.....	10003	No. 2.....	12345
Moloney, W.....	2775	Spathas, G.....	7085	McDonald, W.....	8715	Schrimpl, H.....	10315	Clarke, P.....	12841
Fairbank, R.....	3647	Lysaught, P.....	7301	O'Brien, J. J.....	8833	Hamerman, L.....	10439	Klouzer, J.....	13577
Cillian, J.....	4199	Miedema, J.....	7389						

TWO YEAR MEN

Conductors

Deyman, E.....	386	Suchan, C.....	1828	McMahon,		O'Connor, J.....	9100	Talarico, R.....	12162
Marck, J.....	778	McMahon, P. J.....	2038	W. E.....	5786	Peters, H.....	9162	Lave, E.....	12206
Dempsey, F.....	806	Glenba, G.....	2866	Hrdina, J.....	5834	Curry, T.....	10972	Hartnett, C.....	12472
Cribben, G.....	810	Dennehy, D.....	3244	Mackall, T.....	6448	Rogers, J.....	11016	Reilly, T.....	12998
Zychal, J.....	840	Ryan, W. E.....	3426	Kucera, C.....	8058	Considine, J.....	11428	McNulty, J. J.....	13278
Schuth, E.....	964	Bezdicek, E.....	5724	Schmidt, L.....	8912	Hojnowski, B.....	11444	Johncock, W.....	13624
Hansen, A.....	1578							Piotrowski, H.....	13906

Motormen

Ruska.....	325	Kramer, W.....	4831	Briner, W.....	8047	Ahearn, C.....	9447	Dobias, J.....	11879
Kunzman, M.....	891	Musil, E.....	4983	Schenk, J.....	8121	Fitzmaurice, J.....	9733	Silha, J.....	11951
McMahon, J.....	1403	Seneschall, J.....	5383	Whalen, F.....	8615	Burke, M.....	10863	Gecan, M.....	12155
Jerman, J.....	2297	Rilea, S.....	6219	Campbell, W.....	8657	Bollam, W.....	10885	Martin, C. E.....	12359
Zalewski, A.....	3061	Shoovlin, R.....	6255	Toppel, C.....	9015	McCarthy, J.....	11011	Wersic, J.....	12472
Radatz, W.....	3195	Murawski, T.....	6671	Naughton, M.....	9213	Smejkal, J.....	11069	Christie, G.....	12967
Smith, L.....	3879	Lawler, J.....	7619	Thomas, C.....	9335	Hosek, J.....	11773	Burns, R.....	13097
Blaa, J.....	4175	Zander, C.....	7797						

THREE YEAR MEN

Conductors

Knoblock, F.....	1884	DeOliveira, H.....	3016	Isaacson, C.....	5150	Kozak, A.....	7346	Daley, D.....	10992
Berg, H. W.....	2380	Doumel, C.....	4894	Schroeder, A.....	6162	Prindville, J.....	10930	Beavers, W.....	12912

Motormen

Shanahan, T.....	353	Gerry, F.....	4229	Fogarty, M.....	4993	Pearson, O.....	6165	McFadden, W.....	10547
------------------	-----	---------------	------	-----------------	------	-----------------	------	------------------	-------

FOUR YEAR MEN

Conductors

Richter, P.....	2764	Nyhan, J. J.....	6592	Stoneham, L.....	8114	Martin, M.....	8232	Zarek, L.....	11282
Henry, L. C.....	4968	Bromann, T.....	7630						

Motormen

Truhlar, J.....	9713	Johnson, J.....	10389	Ahearn, W.....	11425
-----------------	------	-----------------	-------	----------------	-------

FIVE YEAR MEN

Conductors

Dammann, H.....	328	Kraemer, C.....	7992	Olson, A.....	8886	Otto, E.....	12036	Shipper, W.....	13198
				Haupt, V.....	10958				

Motormen

Havlicek, E.....	451	Moravec, E.....	10223
------------------	-----	-----------------	-------

SIX YEAR MEN

Conductors

Schaid, A.....	6260	Brazill, J.....	6800	Thul, E.....	9248
----------------	------	-----------------	------	--------------	------

Motormen

Name	Badge	Name	Badge	Name	Badge	Name	Badge	Name	Badge
Egan, G.	1207	Molik, A.	6319	Hersh, L.	8257				

SEVEN YEAR MEN

Conductors

Kempa, J.	468	Johnson, J.	2426	Hester, J.	5160	Weise, H.	13482	Prochaska, J.	14248
----------------	-----	------------------	------	-----------------	------	----------------	-------	--------------------	-------

Motormen

Schutt, P.	7667	Fitzpatrick, J.	10605
-----------------	------	----------------------	-------

EIGHT YEAR MEN

Conductors

Vacha, F.	776	Ford, J. J.	2140	Rennie, C.	5500	Jacobs, L.	9316	Matre, F.	11546
Vrba, G.	1192	Lynch, J. P.	4944	Maloney, F.	7664	Croughan, P.	11194	Nolan, V.	11562

Motormen

Kindle, F.	899
-----------------	-----

NINE YEAR MEN

Conductors

Clarke, P.	892	Mullen, C.	4494	Gilroy, P.	4900	Sullivan, T., No. 2	10684	Miller, F. A.	10706
Subaitis, W.	2106	Czeck, J.	4556	Coleman, M.	5222	Marek, F.	10696	Mondike	10758
Huecksted, C.	3124	Birmingham, R.	4776					Madill, J.	10850

Motormen

Fee, T.	8207	McGreal, A.	12943
--------------	------	------------------	-------

TEN YEAR MEN

Conductors

Turczynski, P.	832	Lindsey, C.	3048	Williams, T.	8582	Semelman, J.	10780	Sanow, G.	12204
Hodoval, E.	1756	Hromada, J.	3740	Priban, J.	8832	Adams, C.	11030	Edwards, G.	13036
		Bell, W.	8174	Doyle, J. J.	9848	Seebock, E.	11894		

Motormen

Kelner, J.	3027	Kozoyed, F.	10813	Neale, G.	12893
-----------------	------	------------------	-------	----------------	-------

ELEVEN YEAR MEN

Conductors

Boucek, F.	230	Merkel, C.	3788	Kennedy, T.	7502	Penwitt, C.	8998	Manson, A.	10396
Hurley, J.	316	Aker, E.	4738	Staff, J.	7791	Schaar, O.	9090	O'Neill, D.	10470
Holly, J.	544	Builfoyle, M.	5104	Finn, J.	7802	Viola, F.	9104	Almond, H.	11314
Lemke, P.	786	Eckart, C.	5126	Endeman, W.	7834	Matousek, B.	9160	Wilhelm, A.	12600
Unrich, J.	2118	Macklin, C.	5212	May, W.	7864	Urlaub, L.	9276	Schomer, H.	13336
Kurth, A.	2544	Klenz, O.	5332	Halvey, J. P.	8298	Payne, A.	9644	Voss, E.	13406
Scanlon, D.	2820	Moriarty, J.	5510	Duffee, F.	8548	Martin, L.	9768	Durkin, M.	13626
Dau, P.	3208	Vacha, C.	6200	Grice, I.	8894	Bronice, A.	10014	Hanley, M.	14010
Hagen, J.	3720	Noffs, C.	6382	Larson, P.	8972	Stepanek, J.	10224	Waszak, J.	14154
				Tye, E.	8994				

Motormen

O'Rourke, J.	363	Cronin, O.	3529	Kibbelle, G.	8201	Lynch, M.	8971	Marszalek, S.	11247
McGinnis, M.	433	Ray, M.	5873	Kerwin, P.	8593	Czarnecki, F.	10421	Ranahan, M.	12113

BLUE ISLAND

ONE YEAR MEN

Conductors

Laban, M.	222	Mikulecky, E.	4416	Dresler, A.	5838	Demko, E.	7550	Guthaus, R.	10104
Quill, R.	656	Cheever, C.	4486	Devine, C.	6044	Mencel, J.	7726	Walter, F.	10156
Bell, J.		Kouba, G.	4540	Cervenka, J.	6182	Ludvik, E.	7740	Wapon, S.	10724
No. 1	780	Steiner, M.	5148	Fraz, W.	6722	Baruch, W.	8570	Perkaus, G.	11108
Mlyniec, F.	2568	Neumann, E.	5704	Frost, W.	6888	Wernert, J.	9484	Buehring, H.	11632
Curran, R.	3014	O'Dowd, A.	5818	Bauer, C.	7110	McNamara, J.	9744	Crowl, F.	11726
Novak, C.	4084	Sheridan, W.	5824	Bell, J., No. 2	7468	Calabrese, N.	9856	Hodel, J.	11778
Brezinsky, V.	4378	Janca, F.	5836			Loomos, N.	9964		

Motormen

Over, G.	375	Klima, O.	2147	Klicman, J.	5955	Olsen, N.	8459	Suske, W.	10501
Winter, W.	705	Thornton, F.	3787	O'Brien, M.	6145	Gleason, J.	8507	Collins, W.	10581
Walsh, D.	1221	Krska, F.	3957	Wisniewski, M.	6155	Schwartz, L.	9123	Sharkey, C.	11545
Wohlbedacht, C.		Muelling, W.	4129	Hardy, J.	6299	Grimes, M.	9353	Grubbe, M.	11771
No. 1	1667	Touranjeau, V.	4389	Moran, W.	6417	Barnett, A.	9497	West, J.	12125
Steinbrecher, C.	1875	Siessman, W.	5531	Halper, C.	6961	Finklestein, M.	9779	Peters, P.	12797
Wigent, W.	1979	Fitzpatrick, T.	5549	Lloyd, J.	7695	Kennedy, T.	10427	Vlach, C.	13495
				Gleason, T.	8355				

TWO YEAR MEN

Conductors

Name	Badge	Name	Badge	Name	Badge	Name	Badge	Name	Badge
Vrhel, E.	930	Daniels, T.	4682	Barton, S.	8220	Seegar, A.	9534	Kuban, F.	11054
Webster, M.	1796	Valenta, F.	6886	Dunn, T.	8512	Schaefer, N.	9562	Piekarski, T.	11170
McGuire, J.	3464	Gedonius, W.	7126	Kucera, L.	8668	Buehring, C.	9714	Gurschke, C.	12742
Kapoun, H.	4322	Fuller, V.	7542	VanLoan, G.	8922	Smythe, R.	10860	McGowan, H.	12826
Sullivan, W.	4552	Kennedy, J.	7616	Powers, J.	9478				

Motormen

Slavik, J.	455	Kowske, E.	1849	Vosmik, J.	5515	Brunsluk, G.	10329	Setter, L.	11519
Vlach, W.	1493	Pakrovsky, H.	4369	Toborg, A.	9487	Krauz, J.	10395	Tomicek, S.	12779
				Novak, J.	9689				

THREE YEAR MEN

Conductors

Cook, F.	4562	Zidek, F.	5342	Loeb, H.	7100	Schmude, W.	9260	Blachowski, S.	12416
Donikowski, W.	4958	Grigas, J.	5776	Wickham, E.	7382	Gaede, E.	9274	Dykier, E.	13076
		Kalal, M.	6550	Johnson, L.	9086	Brindley, A.	10386		

Motormen

Grieshaber, H.	1375	Haller, M.	2583	Fliss, W.	5081
---------------------	------	-----------------	------	----------------	------

FOUR YEAR MEN

Conductors

Naughton, J.	2700	Valenta, R.	3176	Hayes, C.	6638	Mussared, L.	8650	Sullivan, M.	10760
Nails, M.	2888	Palkoska, J.	4336	Mikota, J.	8134	Dolan, T.	10412		

Motormen

Schaefer, C.	1435
-------------------	------

FIVE YEAR MEN

Conductors

McCarthy, C.	2028	Lawler, P.	9236	Horek, J.	12636
-------------------	------	-----------------	------	----------------	-------

Motormen

Tenca, P.	1001	McKay, A.	11407
----------------	------	----------------	-------

SIX YEAR MEN

Conductors

Gach, A.	2892	Carlson, C.	4016	Holdych, J.	7622	Andrews, V.	8182	Kilmas, J.	10928
---------------	------	------------------	------	------------------	------	------------------	------	-----------------	-------

SEVEN YEAR MEN

Conductors

Gross, N.	9060	Kalal, G.	10314	Marose, M.	11940
----------------	------	----------------	-------	-----------------	-------

EIGHT YEAR MEN

Conductors

Rampage, W.	3184	Tetrick, J.	7836	Brouse, J.	11526	Karlo, J.	14134	Dominiak, S.	14448
Kobel, J.	7332	Piper, A.	8654	Sides, G.	13110				

NINE YEAR MEN

Conductors

Ringl, F.	4068	Koutny, E.	7214	Kouba, J.	10180	Miller, P.	11160	Petras, S.	13726
----------------	------	-----------------	------	----------------	-------	-----------------	-------	-----------------	-------

Motormen

Pontarelli, H.	6399
---------------------	------

TEN YEAR MEN

Conductors

Schoenfield, F.	732	Olsen, R.	4818	Stark, N.	6314	Lindensmith, J.	12954	Rogalinski, C.	13284
Schroeder, B.	4500	Fiala, J.	5678	Wandry, H.	8862	Schwartz, F.	12982	Brhel, J.	13982

Motormen

Marvin, J.	6171
-----------------	------

ELEVEN YEAR MEN

Conductors

O'Neill, E.	400	Murphy, W.	6138	Linden, I.	7484	Vlach, E.	9124	Bamford, J.	9986
Cudahy, C.	920	Szarat, J.	6148	Williamson, A.	7488	Camer, P.	9328	Chvatal, E.	14246
Bethke, H.	5948	Wilson, W.	7344	Venzke, H.	7570	Gielow, F.	9926		

Motormen

Morley, M.	1783	Midorski, J.	4533
-----------------	------	-------------------	------

KEDZIE

ONE YEAR MEN

Conductors

Name	Badge	Name	Badge	Name	Badge	Name	Badge	Name	Badge
Bloyd, R. M.	114	Kehoe, P. J.	3340	Wheaton, A. M.	5710	Dailey, J. F.	8196	Hyde, J. D.	11050
Sampson, T. F.	178	Shanahan, J. B.	3434	McElligott, W.	5772	Coffey, F.	8348	Woods, M.	11062
Carlson, Ed.	334	Stege, W. A.	3512	Walsh, T. P.,		Morris, W. J.	8552	Dwyer, P. F.	11154
Schultz, R. C.	338	Duepner, L.	3588	No. 2	5936	Sullivan, H.	8722	Renfrow, L. M.	11294
McLaughlin, M.	566	Koebel, W. F.	3708	Courtney, F.	5992	Linder, U. F.	8758	Reiter, N. M.	11518
Caldwell, H. D.	908	Corrigan, F.	3750	Foley, P. J.,		Prescott, A. B.	8850	Deylin, G. P.	11634
Racette, A.	928	Gillispie, D.	3804	No. 2	6008	Tribble, M. J.	9106	Quinn, B. J.	11788
Kennedy, A. F.	1002	Burke, C. M.	3994	Vondrak, H.	6058	Raymond, G.	9200	Gorey, W. J.	11840
Schneider, E.	1686	Heelan, J. J.	4082	Kielbasa, A.	6066	LeClair, T.	9284	Schultz, C. E.	12158
Bennett, H. J.	2052	Kane, J. P.	4146	May, E. B.	6110	Burns, D.	9376	Hartnett, E. F.	12484
Swanson, E.	2086	Lyons, R. P.	4454	Baker, W.	6128	Quirk, H.	9490	Murray, A. R.	12838
Piper, A.	2208	Knox, R.	4670	Euphrate, N.	6242	Tully, J. T.	9492	Sullivan, J. J.	12916
McMahon, J.,		McGowan, O.	4810	Witt, J. C.	6822	Hughes, J. W.,		Cahill, J. E.,	
No. 5	2238	Roberts, G.	5100	Schmidt, C. A.	6980	No. 1	9540	No. 2	12938
Corboy, E. J.	2340	Dole, H. D.	5154	Ryan, S. J.	6998	Dowling, W.	9630	Johnston, R. B.	13136
Gibbons, M.,		Dwyer, W. P.	5168	Bernard, N.	7044	Walsh, J., No. 2	9656	More, D.	13144
No. 3	2378	Popp, C.	5230	Roll, B.	7228	Otis, P. H.	10102	Ryan, J. P.,	
Koepke, L.	2432	Coleman, M.	5366	Steik, J.	7310	Mahoney, W. J.	10142	No. 3	13202
Shields, L.	2596	Fenn, J. W.	5536	O'Brien, W. J.	7402	Goldrick, M.	10284	Kramp, P.	13542
Coombs, J. O.	2660	Pankey, J. L.	5658	Cvetan, G.	7416	Dudley, H. L.	10472	Pawlchik, M.	13648
Bloyd, I. A.	2690	Rollo, H.	5662	Saley, J. W.	7582	Walsh, T. P.,		Zoller, D.	14068
McGlynn, J. A.	2974	Miehle, J. J.	5670	Breuer, J. R.	7586	No. 3	10822	Sraybr, J.	14074
Carden, C.	2994	Lynch, T.	5672	Ness, A.	8076	Holt, E. M.	10964	Hermann, W.	14078
Connolly, T.	3076			Amsterdam, B.	8194				

Motormen

Reynolds, J.,		Ryan, J. F.,		Ruane, J.	4927	Dolan, J.	7021	Shirer, G.	9255
No. 2	523	No. 3	2909	Courier, J.	4933	King, P.	7107	McVea, R.	9275
Matthiesen,		Carr, M. J.	3143	McGovern, O.	5141	Ahern, M.	7579	Wollpert, M. H.	9385
W. E.	611	McShane, T.	4153	Toomey, W.	5255	Hiehl, J.	7677	Jarmer, J. J.	10745
Leary, A.	683	Wascho, J.	4403	Bower, J. W.	5527	Kroes, P.	7891	O'Neill, T.	11065
O'Connor, W.,		Moore, D.	4477	Hartmann, G.	6011	Shumaker, C.	7971	Darcy, W.	11151
No. 2	1837	Kuchne, E.	4541	Tuskey, C.	6071	Erickson, F.	8111	Bradley, T.	11897
Sullivan, J. D.,		Sanders, C.	4599	Bayne, C. R.	6329	Freisch, C.	8269	Carmody, J.	11963
No. 2	2101	Becvar, F. J.	4793	Flynn, W.	6393	Lasos, K.	8673	Vek, R. J.	12327
Leverenz, E. A.	2351	Murray, C.	4801	Stack, J. J.	6519	Scanlon, C.	8819	Helm, F. W.	12991
Burke, T. J.	2563	Vesey, W.	4807	Fisher, J. A.	6651	Sullivan, M.,		Young, F.,	
Malchow, W.	2635	Keating, D.	4817	Andrews, W.	6799	No. 2	8875	No. 2	13237
		Cannon, P.	4861	Werner, J.	6859	Cullinan, M.	9225	Cotter, N. J.	13589

TWO YEAR MEN

Conductors

Schak, E. C.	232	Harrold, J.	3828	Ridler, F.	7128	Leahy, E. J.,		Cunningham, P.	12134
Haggstrom,		Barrett, T.	4308	Kuehl, L.	7288	No. 1	8800	Naftilan, M.	12218
E. L.	296	Cady, W. E.	4704	Gatz, P.	7322	Bennett, W.	8826	Coughlin, M.	12354
Fahy, J. J.	958	Schilling, J.	4874	Willms, G. L.	7412	Richardson, T.	9220	Chaloupka, J.	12686
Gannon, J.	1632	Scholl, J.	5048	Sax, D.	7478	Ryan, D.	9340	Urganus, M.	12688
Hammerton,		Kelly, W. P.	5560	McAndrews, P.	8068	Gabrlick, E.	9426	Brennan, H. J.	12714
J. E.	1642	Horan, P. J.	5564	Trumbull, G.	8092	Frey, O. E.	9436	Guerin, T. W.	13228
Bosnak, S.	1782	Miehle, J. J.	5670	Golden, P.,		Burke, F. J.	9900	Kroes, A. S.	13426
Gustafson, G.	2470	Hester, P.	6318	No. 1	8118	Cord, H. B.	10192	Coleman, J. J.	13432
Lyons, D. J.	2818	Deutinger, C.	6378	McVey, U. S.	8158	Farrell, E. J.	10198	Griffin, B.	13676
Conway, M.	2882	Fitzmorris, J.	6458	Morrisey, D.	8602	Tarpey, T. J.	10498	Kenny, M.	14178
Walth, S.	2938	Dvorak, T.	6832	Thompson, A. F.	8728	Millay, J. A.	10864	Huska, M.	14296
Bennett, A.	3554	Kerwin, P. F.	6844	Griffin, J.,		Bingham, G.	11610	Wynne, T. F.	14374
		Craig, J., No. 1	6898	No. 1	8778	Wright, W. J.	11612		

Motormen

Taylor, H. A.	201	LaVoy, H.	4381	Telschow, E.	6637	Collins, J.	8563	Brennan, J.,	
Collins, M.	917	Duffy, P. F.	4739	Dever, M. J.	7249	Boehmer, P.	8963	No. 2	10497
Callahan, D.	1663	Staunton, W.	4763	Sullivan, T. J.	7565	Knusman, G.	9063	Hayes, E.	11187
Roche, M. V.	1805	Clifford, D.	5537	Lally, M.	7943	Hunt, T.	9185	O'Brien, D. J.,	
Reynolds, C. A.	2217	Marosits, R.	5799	Becke, T.	8003	Dorgan, J. J.	9369	No. 2	11633
Kirby, J. J.	3183	Porter, W.	6031	O'Neil, P. J.	8153	Moriarty, I.	9831	Clyne, D.	11747
Powers, J. J.	3323	Sullivan, M.,		Lenahan, P.	8411	Mocell, F. G.	10227	Clement, M. J.	12303
		No. 4	6187					Forbrick, H. H.	13453

THREE YEAR MEN

Conductors

Philbin, M.	214	Donohue, J. D.	3396	Eccardt, C. J.	6178	Eding, H. P.	8674	Kennedy, W. L.	12084
Tobin, J. J.	992	Willoughby, B.	4192	Fogarty, M.	7772	Dahlberg, C. J.	9238	Gibbons, E. J.	13902
Ritchie, O. D.	1680	Lynch, J. L.,		O'Sullivan, J.,		Moran, T. W.	9878	Conley, T. J.	14092
McGrath, P.	1842	No. 1	5000	No. 2	8532	Alton, G.	11976	Allentuck, R. J.	14182
Baruch, J.	2844	Cannon, G.	6120						

Motormen

Moriarity, P.	5543	Lees, L. H.	9217	Crowley, D. D.	9909
---------------	------	-------------	------	----------------	------

FOUR YEAR MEN

Conductors

Hooper, R. L.	2090	Nelson, C. S.	5788	Gleeson, E. I.	8168	Gibbons, M.,		Cue, W. L.	9352
Simmons, E.	3162	Farrar, W. R.	6310	Moore, W. J.	9112	No. 1	9120	LaVoy, J. B.	9922
Schocker, W.	5186	O'Donnell, J. P.	7890			Rogerson, N.	9344	Brown, W.	10452

Motormen

Lawlor, P.,		Pembroke, J.	8773	Leahy, R.	9085	Slattery, D.	11907
No. 2	2741						

FIVE YEAR MEN

Conductors

Name	Badge	Name	Badge	Name	Badge	Name	Badge
Murphy, T.	2744	Hester, J., No. 1	4220	Donovan, E.	6388	Foote, F. M.	7270
Legg, R.	3178	Coleman, W. J.	4406	Coles, B. D.	6512	Coffey, M. J.	7866
		Michael, H.	4520	Lahey, G.	7036	Meinert, C.	8308

Motormen

Lambert, J.	933	Crowley, T.	3631	Luedtke, W.	6481	Smith, M.	11501
------------------	-----	------------------	------	------------------	------	----------------	-------

SIX YEAR MEN

Conductors

McDonald, M.	1998	Warning, R. C.	2334	McGrath, J. F.	2390	Walsh, T. F., No. 2	10464
				Ryan, T.	8292		

Motormen

Chamberlin, C.	4253	Saemann, W.	5415
---------------------	------	------------------	------

SEVEN YEAR MEN

Conductors

Mulligan, M.	1530	Hyland, M.	3308	Jones, J. T.	8720	Culton, C. S.	13004	Gliwa, H.	14162
Heafey, M.	2092	McGregor, W.	7384	Cahill, C. M.	10988	Slattery, T. J.	14018		

Motormen

O'Leary, T.	2733
------------------	------

EIGHT YEAR MEN

Conductors

McInerney, J., No. 1	4352	Casey, J., No. 2	6540	Finn, W. E.	8658	Musker, D.	11036	Nelson, A. W.	14158
		Reents, J. F.	8132						

Motormen

Healy, C. B.	5429	Crowley, D. P., No. 2	7491
-------------------	------	--------------------------------	------

NINE YEAR MEN

Conductors

Fallon, P.	2078	DeBrown, E.	4194	Quinn, H.	5574	Golden, P., No. 2	6442	Sims, G.	7226
Mulvihill, P.	3160	Berghaus, H.	5208					Reichardt, H.	8590

Motormen

Ryan, T. M.	5485	Griffin, J. F., No. 2	5567	O'Connell, M.	9135
------------------	------	--------------------------------	------	--------------------	------

TEN YEAR MEN

Conductors

Hart, M.	1388	McGovern, F. J., No. 2	6086	Ennis, G. J.	6910	Ryan, J.	10826	Hay, T. R.	12862
O'Mahoney, T.	4596	Tuohy, J. M.	6156	Hurley, D.	9024	Boylan, P.	12340	Curnane, T.	12970
Coleman, M.	5366	Schroeder, L.	6418	McDonald, R. H.	10374	Connolly, J., No. 2	12528	Hausman, H.	14174

Motormen

Taylor, M.	309	McGlynn, A. J.	4937	Vaughan, J. A.	5503	Glenn, F.	8305	Bresnahan, M.	10387
-----------------	-----	---------------------	------	---------------------	------	----------------	------	--------------------	-------

ELEVEN YEAR MEN

Conductors

Creagh, P.	426	Flanigan, P. J.	3832	Skehan, M. J.	7264	Hamlin, V. C.	8536	Frawley, D.	9854
McFadden, M.	696	McGrail, J.	4196	Miller, J. F.	7394	Reichhold, W. F.	7830	Russell, M.	9882
Murtaugh, J., No. 1	946	Leahy, E., No. 2	4412	Dorney, G. R.	7566	Moss, F. H.	8740	Grundlehner, H.	9988
Robinson, B. F.	994	Abbey, F. J.	4600	Fleckenstein, J.	7578	Galvin, T. J.	8762	Ambrose, G., No. 2	10122
Daly, J.	1432	Caron, M.	4862	Priban, M.	7648	Stone, C. P.	8828	Holmes, E. O.	10164
Ginnis, A.	1496	Stanton, E. F.	5844	Boehme, R.	7756	Farrell, M.	9114	O'Brien, D.	10380
Gibbons, S.	2924	Kiely, T.	6118	Cooke, E.	7856	Kern, F. J.	9172	Sugrue, P.	10382
McInerney, J., No. 2	3166	Carmody, B. F.	6510	Scherenberg, W.	7952	Hester, F.	9458	Leneghan, P.	12008
		Thomas, L. R.	7204	Pierce, T.	8126	Sheridan, M.	9774	Hennessy, J. J.	14114

Motormen

Scanlon, D.	4885	Stack, R.	5455	Ruane, P.	9219
------------------	------	----------------	------	----------------	------

NORTH AVENUE

ONE YEAR MEN

Conductors

Name	Badge	Name	Badge	Name	Badge	Name	Badge	Name	Badge
Hansen, A.	398	Weinke, K. H.	3136	Curtin, D.,		Lemker, C.	8078	Tichy, F.	10352
Morum, P.	498	Fennell, A. L.	3140	No. 1	5434	Zartman, L.	8120	Behnke, H.	10468
O'Shea, P.	802	McMillan, F. E.	3182	Woodbury, A.	5456	Morrow, J.	8144	Reinke, W.	10570
Kurtzrock, R.	868	O'Malley, P.	3436	Dearns, F.	5458	Dikeman, E.	8156	Garry, H.	10602
Petersen, H.	962	Cannon, E.	3484	Neil, E.	5676	Meier, H.	8210	Hawkins, T.	10824
Russell, D.	984	Yerk, J.	3560	Smith, T.	5742	Wilbois, P.	8284	Simon, H.	11106
Callahan, H.	1026	Swanson, G.	3692	Lynch, J.	5794	Dentamaro, W.	8304	Abraham, W.	11374
Casserly, P.	1054	Partyka, A.	3912	Kustohs, R.	5820	Walsh, E.	8734	O'Neill, J.	11442
Anderson, H. A.	1068	Fierresel, E.	3944	Stack, B.	5972	Kraft, L.	8774	Nesbitt, A.	11512
Lauter, A.	1354	Brown, G.	4008	Bobula, E.	6340	Bohn, A.	8806	Smith, L.	11532
Vlasak, W.	1400	Weber, C. A.	4024	Moran, M. J.	6444	Chaddock, J.	8858	O'Connor, A.	11888
Lemieux, H.	1440	Bell, J.	4078	Krause, J.	6649	Sheehan, T.	8920	Hays, J.	12332
Palmer, J.	1590	Schlack, E.	4104	O'Grady, T.	6734	Turpin, F.	8926	Tutt, C.	12338
Deering, L.	1676	Parker, T.	4108	Vesley, F.	6872	Kinski, F.	9158	Shelton, W.	12422
Leftus, P.	1742	Thornton, T.	4170	Tietnejs, C.	7012	O'Grady, M.	9228	Downmondz, M.	12952
Maxwell, J.	1906	MacIntosh, G.	4176	Jahnke, C.	7292	Laechelt, E.	9290	Hickey, W.	12980
Holper, F.	1946	Sterke, E.	4328	Krammer, J.	7340	Lachelt, J.	9296	Borucki, T.	13010
Vraney, F.	1964	Torgerson, E.	4434	Van Mere, W.	7374	Larson, O.	9302	Pudwell, H.	13120
Fischer, W.	2102	O'Connell, J.	4526	Plynn, J.	7644	Larisey, D.	9324	Morrison, F.	13276
Heyer, P.	2210	Schneider, G.	4530	Pokrywka, J.	7716	Smith, A.	9544	Spinka, J.	13640
Helm, C.	2234	Wedarski, T.	4604	Dwyer, W.	7718	McDonnell, E.	9624	Helgerson, C.	13704
Sandra, P.	2308	Freolig, E.	4932	Fleming, J.	7946	Klewin, E.	9746	Petrowski, J.	13884
Nuiss, R. A.	2468	March, F.	4966	Sullivan, T.	8020	Shea, L.	9978	Bruidi, E.	13944
Hellenbach, J.	2778	Kiedrowski, F.	5050	Kortman, A.	8024	Hauk, A.	9990	Reck, G.	14358
Brandenburg, W.	2874	Szarek, E.	5076	Larsen, A.	8052	Lee, W.	10140	Necley, H.	14444
		Garasck, A.	5184	Meyers, L.	8070	Cardiff, A.	10264		

Motormen

O'Shea, W.	401	Coyne, L.	3757	Lowing, H.	5563	Emerson, H.	7135	Balle, M.	10895
Shoemaker, H.	405	Hedburg, G.	3759	Shattuck, E.	5647	McCullough, E.	7361	Smith, P.	11479
Dopp, H.	493	Sullivan, B.	3923	Keating, O.	5685	Linn, T.	7483	Byren, M.	11483
Haerle, C.	747	Jensen, A.	4047	Echols, W.	5891	Borck, N.	7555	Williams, F.	11561
Halling, H.	1195	Harrer, W.	4187	Keag, F.	5923	Reinhart, J.	7915	Dolan, J.	12149
Bruce, F.	1211	Moberg, C.	4387	Parker, T.	6125	Johnson, J. L.	8065	Goetz, W.	12325
Stephanowski, L.	1393	Graf, J.	4405	Cronin, P.	6315	Gersch, R.	8123	Nohely, W.	12339
Druscha, E.	1449	Gustafson, A.	4469	Johnson, F.	6499	Anderson, H.	8485	O'Keefe, D.	12355
Campbell, C.	1607	Hawkins, T.	4559	Behman, H.	6537	Stiglick, T.	8869	Laurenson, H.	12373
Durkin, P.	1657	Coan, H.	4811	McGuire, E.	6607	Lossman, H.	9043	Nadeau, A.	12587
Wooltje, C.	1707	Nelson, A.	4991	Jensen, A.	6675	Murphy, J.	9051	Johnson, J.	12615
Piper, G.	1953	Mahler, J.	5065	Zurek, F.	6703	Johnson, E.	9249	Buthman, J.	12843
Kelly, J.	2339	McAuliffe, J.	5101	Dobruske, F.	6803	Sass, W.	9363	Devine, J.	13003
Cumbo, D.	2379	Digilio, A.	5143	Bruhn, M.	6835	Hinspater, W.	9761	Hentschal, A.	13117
Cavanaugh, W.	3117	Keadle, W.	5281	O'Brien, D.	6931	Warning, W.	9941	Brodie, J.	13343
Suarez, J.	3399	Oyen, L.	5365	Reed, J.	7017	McGinley, C.	10241	Raidy, E.	13347
Johnson, V.	3441	Coners, J.	5387	Juehlke, A.	7081	Kimmell, C.	10307	Dickier, C.	13369
				Abraham, P.	7099	Reinberger, A.	10429	Braman, F.	13455

Bus Operators

Reed, C.	437	Whitney, H.	3829	Shields, E.	6328	Pinkall, E.	9332	Sikora, H.	11900
Bassford, C.	496	Golding, E.	4002	Kaitschuck, B.	6484	Kopczyk, A.	9605	Marren, J.	12082
Teschky, J.	678	Peterson, S.	4031	Werner, A.	6848	O'Shea, L.	9734	Talent, J.	12178
Sorenson, O.	838	Raypholtz, P.	4091	Cale, F.	6890	Wallace, M.	10098	Thorness, T.	12279
Norlin, C.	1118	Hofstadter, M.	4375	Straubing, W.	6993	Lyons, M.	10210	Rogers, T.	12440
Smith, P.	1132	Sorenson, L.	4602	Zerbes, N.	7381	Langner, C.	10231	Schefke, R.	12495
Pondel, J.	1598	Pedersen, H.	4634	Davis, C.	7983	Vanguilder, A.	10320	Gray, S.	12924
Lynam, W.	1988	Olsen, C.	5286	Olson, A.	8030	Baumgart, F.	10523	Kenny, G.	12997
Walker, J.	2087	Hucksoll, E.	5350	Kalisch, H.	8044	Koss, M.	10888	Bartunek, H.	13041
LaPointe, K.	2535	Peterson, H.	5810	Coughlin, F.	8206	Mueller, H.	11426	Woeke, A.	13049
Klupar, E.	2592	Toman, W.	6018	Ozenberger, T.	8483	Stillwell, G.	11430	Bjornson, F.	13414
Anderson, W.	2668	Dzelodik, J.	6028	Walker, A. P.	8542	Jordan, P.	11452	Tryriver, G.	13609
Rause, J.	2827	Eggers, W.	6197	Ball, E.	8993	Donarski, C.	11774	Jameson, A.	14024
Behan, T. J.	3749	Heidenreich, E.	6218						

TWO YEAR MEN

Conductors

Genz, W.	224	Peters, W.	3236	Schanzle, R.	6126	Kinahan, J.	8176	Miller, E.,	
Gouldin, T.	740	Lidquist, A.	3592	Boles, W.	6216	Solberg, P.	8504	No. 3	11554
Bernard, J.	960	Heide, H.	3694	Herring, H.	6288	Levey, W.	9638	Grace, G.	11656
Amundson, S.	1042	Weiskopf, F.	3848	Carlson, E.	6546	Carolin, P.	9710	Huatt, G.	11690
Meyers, F.	1460	Leonard, J.	4086	Fanlon, W.	6850	Dibbern, P.	9716	O'Leary, J.	11866
Mallen, J.	1736	Dibbern, E.	4396	Pacer, A.	7020	Mathy, B.	9718	Gokenholz, C.	12366
Graf, E.	2072	Edwards, J.	4570	Hayes, H.	7376	Zahn, T.	9730	Corbett, J.	12780
Wiedler, C.	2228	Torgerson, O.	4856	Coleman, F.,		Hanson, H.	9766	O'Shaughnessy,	
McBuiness, T.	2498	Vangen, H.	5396	No. 2	7436	Pelz, G.	9984	A.	12808
Stewart, T.	2610	Mallahan, C.	5450	Wike, A.	7910	Larsen, H.	10574	Thorpe, A.	13416
Matson, S. W.	2718	Rotzall, B.	5770	Pearson, O.	7968	McGrath, D.	10740	Daley, E.	13670
Conrad, H.	2748	O'Neil, W.	5802	Organ, J.	7972	Svoboda, C.	10892	Malone, J.	14272
		Jacobs, F.	6100	Pass, H.	8008	Shepard, L.	11208		

Motormen

Mantwell, H.	151	Sampel, Y.	4665	Wolff, C.	7255	Dillon, J.	8933	Erland, E.	11821
Bilotick, C.	719	Morton, T.	4711	Rahn, W.	7313	Schoff, A.	9407	Bragulla, L.	11829
Jacobson, J.	813	Cjakoski, S.	4785	Durst, F.	7463	Wilson, J.	9939	Schiller, F.	12663
Greeley, J.	1865	Carlson, H.	5229	Moe, A.	7587	Callan, T.	11171	Victor, J.	13015
Larson, L.	4463	Kowald, E.	6501	Golding, J.	8173	Kilburg, S.	11351	McGriff, A.	13277
Stone, E.	4523	Reichel, G.	6571	Wagner, A.	8285	Neville, E.	11555	Lussem, K.	13351
Hughes, J.	4545	Hagedorn, J.	6713	Hayes, P.	8607				

Bus Operators

Name	Badge	Name	Badge	Name	Badge	Name	Badge	Name	Badge
Svanson, M.	1336	Durham, M.	3653	Brown, C.	5095	Holland, R. R.	6883	Wilgus, J.	8812
Frogner, W.	3206	Falk, O.	4164	Krenek, R.	6245	Kimmel, F.	8351	Martin, L.	11889

THREE YEAR MEN**Conductors**

Wroblewski, A.	1224	Henning, J.	2846	Burns, L.	7886	Hendricks, W.	10310	Brooks, A.	12246
McArdle, J.	1270	Kertman, W.	2940	Kalal, J.	8394	Cunningham, P.	10398	Drew, J.	12438
Kent, W.	2172	Glynn, J.	3248	Smith, W.	8682	Hansen, H., No. 3	10610	Grabner, J.	13442
Walsh, P.	2292	Bretzlaff, L.	5120	Rainsford, J.	8978	Ready, E.	10652	Kenlas, S.	13820
Becker, E.	2330	LaFauce, E.	5780	Oberg, A.	9736	Raasch, F.	10762	Downing, R.	14126
Martin, J.	2472	Naprawnik, F. ..	5974	Ritter, G.	9908	Anderson, H.	11748	Gustafson, C.	14550
				Kann, H.	10114				

Motormen

Strickland, H. ..	5465	Tetrow, W.	5491	Martin, E.	6495	Neef, W.	8559	Craign, H.	8953
		Stewart, A.	5583	Jones, W.	7131	Poltrock, R.	8683		

Bus Operators

Grier, J.	1345	Olson, C.	5247	Nasch, B.	7404	Whalen, J.	12694	Hazelfeldt, H.	13307
Veltman, C.	2946	Scruggs, T.	7186						

FOUR YEAR MEN**Conductors**

Hockox, J.	262	LaFrana, D.	3954	Kearns, B.	6346	Wacholz, W.	8756	Lorenz, H.	12314
King, H.	940	Williamson, E.	4210	Jiambalvo, J.	6694	Czarnecki, J.	9932	Walsh, G.	12800
Burkman, H.	2666	Bolton, O.	5694	West, M.	7958	Bock, E.	10358	Walsh, J., No. 2	12894
Schultz, H.	2726	Ferwerda, R. ..	6272	Schwabe, H.	8624	Gill, P.	11262		
				Davie, M.	8698				

Motormen

Polich, F.	323	Loftus, T.	5883	Woods, P.	8919	Anderson, G.	9141	Beeske, F.	11317
				O'Dell, J.	8923				

Bus Operators

Christian, R. W.	1397	Robitzke, E.	1876	Smith, T. L.	11135	Lee, H.	12486	Matthias, E.	13924
				Spiegel, C.	12059				

FIVE YEAR MEN**Conductors**

Lash, F.	490	Warnecke, C.	4524	Rable, E.	6570	Brown, E.	8952	Colson, V.	13818
Wilson, C.	3808	Linklater, A.	4564	Miller, E.	8014	Knapp, F.	9040	Scholle, H.	14072
Johnson, A., No. 5,	3844	Bannon, P.	5426	Seghers, A.	8288	Quillinan, J.	13760		

Motormen

Grundt, G.	3687	Nestel, G.	4019	Grand, C.	5721	Haslinger, S.	10019	Buckley, G.	11775
-----------------	------	-----------------	------	----------------	------	--------------------	-------	------------------	-------

Bus Operators

Scheiman, E.	3412	Griffen, J.	5864	Jahnke, W.	11490
-------------------	------	------------------	------	-----------------	-------

SIX YEAR MEN**Conductors**

Carlson, H.	2204	Klauser, L.	4982	Meyers, J.	8064	Ruckstuhl, J. ..	8462	Zielinski, J.	14046
Smith, B.	2416	Sinnott, M.	7840	Larson, W.	8074	Madnelka, J.	9608	Kingsland, M.	14124
				Anderson, H.	8270				

Motormen

Shreeve, J. H.	299	Canadeo, T.	1781	Neumayer, A. ..	4775	Groch, M.	10679	Kerins, M.	11439
---------------------	-----	------------------	------	-----------------	------	----------------	-------	-----------------	-------

Bus Operators

Bartz, F.	3028	Nelson, E.	13595
----------------	------	-----------------	-------

SEVEN YEAR MEN**Conductors**

Kischer, P.	3054	Adams, J.	3312	Simon, P.	10552	Ash, C.	11032	Schroeder, H.	13094
		DeJuren, J.	6598	Mjelde, N.	10836	Rennhack, H.	13092		

Bus Operators

Riefenberg, L.	14060
---------------------	-------

EIGHT YEAR MEN**Conductors**

McNally, P.	716	Muchow, E.	5722	Short, J.	8164	Kuczyk, H.	8752	Batzleff, O.	12966
Spears, W.	980	Seipp, A.	6742	Fossum, H.	8386	Gouldin, R.	9520	Halek, A.	13112
Bresnahan, D. ..	4990	Fell, W.	8054	Schlosser, W. ..	8448	Burt, E.	11398		

Motormen

Name	Badge	Name	Badge	Name	Badge	Name	Badge
		Rafter, P.	1289	Cordes, W.	7591		

Bus Operators

Johnson, A. E....	11222	O'Sullivan, P.	12421
-------------------	-------	---------------------	-------

NINE YEAR MEN**Conductors**

Ehlers, H.	4796	Hemstreet, F. ..	6640	Marshall, W.	7500	Granshan, J.	9924	Johnson, L.	14560
				Haughey, P.	8384				

Motormen

Anderson, E. ..	9983	Mahoney, J.	11367
-----------------	------	------------------	-------

Bus Operators

Fitzmaurice, J....	9649
--------------------	------

TEN YEAR MEN**Conductors**

Kures, E.	4000	Sonnenberg, G....	4800	Schultz, H.	5008	Roggerman, C....	11984	Dahlquist, E.	14116
				Moesch, J.	5270				

Motormen

Malotke, H.	7207
------------------	------

ELEVEN YEAR MEN**Conductors**

Masterson, M....	1010	Miller, E., No. 2	4744	Murphy, P.	6518	Merker, W.	7604	Zitzow, W.	10336
Smith, F.	1864	Studeman, E.	4934	Lind, T.	6532	Mahoney, J.	8208	Weiss, M.	11026
Munsig, C.	2790	Martina, L.	4986	Sutton, J.	6670	O'Neil, T.	8238	Rhictor, L.	11120
Fischer, J.	3234	Williams, H.	5074	Kenny, J.	6770	McMahon, J.	8314	Freeman, H.	11620
Cochrane, F.	3608	Osmund, P.	5470	Pheland, J.	6912	Beers, L.	8904	Butler, G.	11640
Mason, M.	4284	Johnson, P.	5696	Hayes, W.	6928	Simon, E.	9052	Ranberg, H.	11964
Ollenquist, W....	4408	Fitzgerald, E. ..	5980	Olson, G.	7142	Jaggi, E.	9130	Voss, E.	12546
Cronin, E.	4498	Wern, W.	6440	Stanton, R.	7298	Pederson, L.	9614	Johnson, J.	12678
Sullivan, D., No. 1	4574			Jones, R.	7538	Burgett, B.	9848	Flanagan, C.	12872
								Pogensee, R.	13134

Motormen

Frese, H.	5369	Dacogan, A.	7109	Karlsen, K.	7901
----------------	------	------------------	------	------------------	------

Bus Operators

Johnson, L.	1394	Baker, A.	8690	Winters, E.	13332
------------------	------	----------------	------	------------------	-------

ARMITAGE**ONE YEAR MEN****Conductors**

Callahan, T.	200	Dode, O.	1074	Hungershofer, T.	4554	Naylor, H.	7736	Fiorita, M.	10392
McGuire, P.	332	Gamper, R.	1488	Pinnau, R.	4700	Mortlock, E.	7796	Vierling, G.	10414
Colum, E.	408	Neubauer, E.	1494	Broach, A.	4838	McDaniels, J.	7808	Hoffman, L.	10432
Bahr, E.	482	Lawrence, E.	1540	Lundsberg, A.	4850	Sandberg, O.	7812	Donnelly, F.	10946
Ammann, E.	506	Goyke, A.	1604	Adamczyk, J.	5622	Kindahl, C.	7862	Martin, C.	11002
Urban, F.	614	Hickey, J.	1876	Farrell, T.	5872	Dilger, G.	7882	Huebsch, P.	11558
Stuewe, H.	644	Sorenson, K.	2848	Filskov, L.	6208	Holbrook, J.	8530	Hart, R.	12004
Kuehl, W.	746	Stromsta, R.	2984	Kirchhoff, L.	6606	Wapp, E.	8618	Thomas, J.	12254
Josephson, S.	766	Hansen, R.	3546	Undem, A.	7040	Marron, P.	9232	Iwanski, A.	12442
Frerksen, J.	846	Stasch, J.	3796	Kloock, A.	7166	Rapp, F.	9572	Schmidt, J.	13572
Fryba, J.	886	Oman, D.	4122	Veggeberg, M.	7568	Moseler, A.	9664	Bjornson, A.	13776
Konigsfeld, J....	1022	Skie, C.	4536			McHale, J.	10326	Heintz, A.	13788
								Kropik, C.	13848

Motormen

Stenbro, D.	845	Sares, J.	6035	Schrope, C.	7875	Manthei, E.	9665	Reimer, P.	11387
Beck, W.	2605	Goyke, J.	6089	Balder, J.	7967	Halverson, H., No. 2	9757	Sorge, W.	11619
Timmerman, E....	3627	Sprague, J.	6283	Johnson, O.	7977	O'Donnell, T.	9775	Krawzak, S.	11799
Ford, F.	4063	Jensen, J.	6509	Corbett, W.	7989	Munson, L.	9829	Rice, P.	12055
Schroeder, E.	4323	Pederson, L.	6655	Russell, L.	8155	Grapenthein, W.	10115	Hrdalo, W.	12081
Bucksch, R.	4371	Henriksen, H.	6705	Denton, A.	8779	Heinmann, B....	10171	Hill, H.	12669
Luken, O.	4407	Engelund, P.	6753	Dewald, A.	8817	Guidice, J.	10433	Ruppel, B.	12795
McCarthy, P.	4683	Rohwedder, W....	6915	Redjukowski, E.	8889	Young, J.	11009	Beuzekamp, J....	12885
Scharnack, J.	5853	Brown, A. H.	7019	Erickson, A.	9011	Nicpon, A.	11191	Cullen, J.	12903
McAuly, J.	4905	Haug, R.	7403	Godfrey, J.	9145	Bartley, W.	11233	Knudsen, E.	12987
Lentz, M.	5043	Sawyer, A. C.	7581	Seims, W.	9389				
Pauly, H., No. 2	5509	Gwinn, R.	7847	Kelly, D.	9451				

TWO YEAR MEN

Conductors

Name	Badge	Name	Badge	Name	Badge	Name	Badge	Name	Badge
Moore, W.	1140	Inman, L.	4512	Noonan, D.	7764	Gregerson, G.	9790	Gerome, F.	11636
Kells, N.	1750	Moriarity, M.	5082	Davidson, T.	8084	Kennedy, L.	9816	Edelson, B.	12262
Duke, S.	1912	Malmquist, A.	5432	Gill, D.	8402	Krehl, G.	10658	Wilke, C.	12464
Franke, E.	2104	Schultz, J. L.,		Morrissey, H.	8852	Conors, J.	10662	Anderson, G.	12646
Enger, G.	3810	No. 1	6426	Fram, F.	9098	Hougesen, O.	11446	Milka, V.	12996
						Nielson, N.	11538	Barbey, C.	13644

Motormen

Winstrand, E.	233	Starr, W.	895	Christensen, F.	4439	Walter B.	8513	Martin, F.	11307
Tops, L.	431	Wentzel, W.	2999	Eisentraut, A.	6269	Huffman, W.	8745	Bulchuck, L.	12203
						Morrill, A.	9297	Schreiber, R.	12583

THREE YEAR MEN

Conductors

Callahan, T.	200	Schumacher, O.	5130	Hanson, N.	6596	Moffitt, T.	8424	Rapp, R.	10728
Larson, R.	1434	Hendricks, R.	5226	Moran, D.	7240	Munzer, M.	8958	Christoffel, C.	11044
Bruhn, C.	1862	Boyce, A.	5262	Tamilo, J.	7706	Kusch, W.	8962	Haarz, W.	11594
Kierzewski, O.	3754	Haley, G.	5708	Coughlin, J.	7908	Schultz, J. L.,		Plum, G.	12398
Woods, J.	3756	Thaler, R.	5946	Zimmerman,		No. 2	10234	Jonas, J.	13420
Pahnke, W.	3988	Marmoll, E.	6470	G. E.	8302	Carpino, J.	10502	Schrack, F.	14168

Motormen

Peterson, C.	3253	Grane, C.	3507	Sabatka, F.	7543	Adamczyk, W. ..	8659	Doll, W.	9695
						Wing, R.	9637	Dustin, J.	11541

FOUR YEAR MEN

Conductors

Urzt, F.	2216	O'Shaughnessy,		Tamilo, F.	7784	Coane, M.	10390	Rohr, A.	12886
Rundblad, E.	6214	T.	6322	Faber, W.	9442	Hernct, L.	12864	Witkowski, C.	13382

Motormen

Gaich, L.	971	Skahill, P.	5731	Gnech, E.	6635
----------------	-----	------------------	------	----------------	------

FIVE YEAR MEN

Conductors

Fran, J.	1700	Connors, C.	1832	Bochte, J.	5600	Hughes, J.	6792	Ketter, G.	9702
						Kruger, E.	8876	McLanephy,	
								H. F.	12478

Motormen

Nelson, C.	5739
-----------------	------

SIX YEAR MEN

Conductors

Uhl, W.	2074	Mrugacz, S.	5532	Paturalski, G.	7712	Superkowski, A.	9584	O'Malley, C.	11204
Bloom, E.	3948	Dahlen, G.	7678	Walsh, D.	7724	Kirsch, E.	10344	Gaertner, G.	12526
								Trysko, F.	13962

Motormen

Schultz, R.	6683	Kobenski, E.	8853
------------------	------	-------------------	------

SEVEN YEAR MEN

Conductors

Sone, E.	4470	Williams, W. ..	7660	Oesterreich, W.	7732	Overgaard, M. ..	10598
---------------	------	-----------------	------	-----------------	------	------------------	-------

EIGHT YEAR MEN

Conductors

Demko, G.	1532	Berndt, A.	1690	Kohnke, J.	4788	Strodtman, O.	5066	Riggs, C.	10068
Wiese, S.	1568	Humer, L.	4276	Kinn, J.	4960	Callahan, J.	8640	Brunn, C.	11708
								Rotunno, G.	13588

Motormen

Name	Badge	Name	Badge	Name	Badge	Name	Badge	Name	Badge
Dwyer, P.	4555	LeGros, G.	6355	Kurzer, J.	12901				

NINE YEAR MEN**Conductors****Motormen****TEN YEAR MEN****Conductors**

Mase, A.	734	Higgins, J.	3984	Anderson, W.	5960	Holtz, C.	7350	Greenwood, H.	9210
						Mogge, E.	8814	Schroeder, H.	9424

Motormen**ELEVEN YEAR MEN****Conductors**

Thomson, G.	460	Naughton, I.	4594	Mosslen, E.	6968	Larson, B.	7776	Mix, P.	9586
Mix, B.	3570	Heilbuth, W.	4770	Klemz, C.	7738	Syvetsen, H.	8172	Lifka, F.	10522
						Larson, I.	8680	Gebel, J.	10938

Motormen

Kamke, J.	4485	Poklenkowski, J.	5825	Rhoads, W.	6063
-----------	------	------------------	------	------------	------

DIVISION**ONE YEAR MEN****Conductors**

Uldale, I.	1110	Stacey, R.	3522	Waldy, G.	6394	McCarthy, F.	7594	Young, A.	12034
Hofer, J.	1418	Mueller, W.	3568	Mueller, C.	6424	Wold, E.	7722	Willer, J.	12292
Murphy, L.	1702	Moore, D.	3728	Hildebrand, T.	6430	Kraus, W.	8226	Johnson, J.	12522
Kupinski, B.	2306	Rendleman, R.	4228	Eberlein, A.	6490	Mace, T.	8796	Hendricks, L.	12750
Jorgensen, H.	2316	Shippy, F.	4430	Wescher, C.	6502	Bishoff, F.	9214	Boggs, W.	12920
Taylor, R.	2628	Misius, S.	4480	Evanson, E.	6552	Hengst, A.	9916	Wdowick, G.	13074
Gunderson, F.	2720	Tamillo, H.	4502	Poore, A.	6648	Malawski, J.	11102	Schultz, E.	13230
Warnstedt, R.	3466	Larsen, A.	4706	Daniel, H.	6818	Hartowicz, A.	11500		
Gaven, P.	3488	Clancy, J.	5032	Bell, J.	6894	Vohs, G.	11600		

Motormen

Lamberti, A.	155	Honan, T.	4489	Bolstead, W.	6157	Lynch, E.	7831	Behnke, S.	10831
Cudahy, M.	157	Lange, E.	4507	Radicke, T.	6335	Manley, P.	7889	Benter, P.	11997
Cummings, J.	521	Murphy, J. J.	4627	Hennessey, P.	6447	Traeger, C.	7979	Meehan, P.	12817
Griffin, W.	819	Geneser, J.	5151	Wozeschke, R.	6767	Cheney, F.	8031	Szymansky, M.	12845
Pass, G.	1671	Johnson, J.	7105	McGuinness, J.	7105	Daugherty, L.	8139	Pankow, J.	12861
Galizia, A.	1839	No. 1	5423	Jacobson, E.	7245	Michniewski, A.	9223	Letza, F.	13219
Larson, C.	2189	Wodarski, S.	6027	Grice, F.	7341	Bartels, P.	10251		
Woods, E.	3497	Ebert, L.	6081	Lester, T.	7709	Reeder, I.	10691		

TWO YEAR MEN**Conductors**

Kupczyk, J.	1116	Swolsak, P.	3342	Moberg, E.	6416	Kaeseberg, O.	7282	Regan, J.	9428
Skow, G.	1134	Bishop, A.	5164	Kepp, H.	6514	Christensen, C.	8476	Manzel, F.	10574
Arriva, F.	1170	Hansen, R.	5504	Lloyd, D.	6528	Sweeney, J.	8584	Nordstrom, O.	11094
Dunkel, A.	1704	Klein, R.	5680	Lowery, A.	6804	Bruckhauser, H.	9320	Kearns, W.	11138
Dowling, W.	2872	Mylen, B.	5898	Regan, M.	7148	Makowski, T.	9414	Tozak, M.	13124
								Zelinco, J.	14418

Motormen

McCarty, W.	775	Bresman, J.	5697	Millock, P.	9267	Hoppe, F.	10859	Kopinski, S.	13313
Kiehn, W.	2697	Lydon, J.	7449	Delis, A.	9773	Nicholson, H.	11337		
Strychalski, S.	4745	Schramm, G.	7495	Felman, L.	10189	Bjarnum, H.	12919		

THREE YEAR MEN**Conductors**

Weith, W.	1182	Schulzke, E.	2068	Kuta, W.	5152	Larson, H.	5822	Bowler, G.	7906
						Lamond, D.	6420	Dymon, S.	14216

Motormen

Joy, W.	281	Pendola, C.	5931	O'Day, F.	6517	Cobb, C.	11279
---------	-----	-------------	------	-----------	------	----------	-------

FOUR YEAR MEN**Conductors**

Jauman, J.	708	Derenski, S.	5736	Enzenbacher, A.	6708	Siegbert, H.	10444	Fitzgerald, J.	13182
Everett, H.	794	Misener, C.	6482	Dettman, F.	9288	Walsh, J.	11628		

Motormen

Name	Badge	Name	Badge	Name	Badge	Name	Badge
				Kennedy, E.	6665		

FIVE YEAR MEN**Conductors**

Tillett, F.	2328	Handzik, F.	4826	Tansor, H.	7990	Riley, E.	11128
-------------	------	-------------	------	------------	------	-----------	-------

SIX YEAR MEN**Conductors**

Blair, J.	1366	Barnes, P.	4772	Hendricks, E.	12180
-----------	------	------------	------	---------------	-------

Motormen

Judge, R.	9707
-----------	------

SEVEN YEAR MEN**Conductors**

Scherer, L.	2004	Schabell, A.	11072
-------------	------	--------------	-------

EIGHT YEAR MEN**Motormen**

Younglove, S.	1749
---------------	------

NINE YEAR MEN**Conductors**

Lindner, J.	898	Dalton, J.	5582	Walsh, F.	8524	Koepke, E.	8870	Bowerman, J.	12186
								Bieniasz, A.	13292

TEN YEAR MEN**Conductors**

Mortell, J.	434	Eichstaedt, J.	6026	Olbrecht, J.	6336	McDonagh, M.	12324	Hayden, J.	12814
						Biorn, G.	12490	Brim, W.	13636

Motormen

Gorski, S.	2143	Anderson, H.	
		No. 2	13031

ELEVEN YEAR MEN**Conductors**

Gallagher, J.	362	Tierney, W.	5306	Huber, R.	7454	Myers, W.	8598	Sheehan, W.	10636
Sitkiewitz, P.	990	Sanz, L.	5468	Schal, C.	8026	Olsen, K.	8638	Mueller, J.	11688
Marik, F.	2166	Thomson, W.	6580	Fitzgerald, J.	8060	Mullins, J.	9058	Izban, J.	11800
Wolski, E.	2810	Kopsin, E.	6612	Ness, C.	8332	Raymond, J.	10152	Fischer, J.	12834

Motormen

Brennan, P.	5217
-------------	------

ELSTON**ONE YEAR MEN****Conductors**

Merk, H.	1028	O'Keefe, J.	3580	Carlson, E.	5198	Potempa, F.	6108	Eckman, A.	
Scannell, J.	1142	Andrews, J.	4018	Walsh, M.	5378	McGuinness, C.	6808	No. 2	9580
Schwer, W.	1570	Bodkin, J.	4708	Hunt, F.	5400	Weder, F.	7124	Kerrigan, M.	9700
Nelson, V.	2168	Chapliski, T.	4768	Bordes, E.	5472	Slawson, R.	7378	Priebe, A.	9968
Lechner, E.	2562	Wall, M.	4782	Wiesen, W.	5506	Coomans, F.	9240	Hauserman, P.	12160
Gruits, A.	2948	Vandever, C.	4860	Holzem, H.	6080	Boam, W.	9270	Gabel, W.	12372
								Bojan, G.	14186

Motormen

Miela, W.	649	Kolath, G.	1709	Landers, M.	2695	Kunter, J.	5039	Boss, C.	9765
Anderson, E.	1045	Edmunds, R.	1793	Alver, N.	2943	Coleman, J.	5059	Natzke, G.	10197
Giles, S.	1193	Jensen, W.	1811	Wegner, E.	3581	Mundall, N.	5067	Klippstein, G.	10687
Stanney, T.	1209	Lyons, M.	1897	Andrews, M.	3663	Burns, J.	5119	Southwell, J.	11203
Ley, G.	1249	Golonski, L.	2345	Gilligan, F.	3925	Newberg, C.	5353	Larson, C.	11357
Breitweiser, L.	1417	Kohler, S.	2689	Quetschke, L.	4293	Harding, S.	6195	Gutthoe, C.	12443
						Gebhardt, J.	9485	Trobillion, C.	12811

Bus Operators

Barcal, J.	4155	Lutes, J.	8244	Bukowski, J.	10659	Offerman, W.	11570	Cola, A.	14054
								Toops, J.	12652

TWO YEAR MEN**Conductors**

Hannemann, K.	306	Prange, H.	2644	Huecksteadt, G.	5610	Fliegel, E.	9216	Wierig, W.	12732
Davis, J.	864	Jensen, G.	3778	Brown, P.	5654	Eckman, W.	10622	Schuster, A.	13266
O'Boyle, F.	1380	Blueckert, A.	5250	Neumann, J.	5938	Kuempal, R.	11968	Podraza, J.	13582
Crain, H.	2202	Podgorski, J.	5542	Kells, T.	7792	Case, W.	12240	Kaufman, G.	14302

Motormen

Name	Badge	Name	Badge	Name	Badge	Name	Badge	Name	Badge
Flesch, E.	879	Hartle, G.	3047	Szamocki, A.	5129	Soreghen, H.	5299	Lund, H.	7867
Donald, G.	1101	Schmidt, W.	3773	Buthman, W.	5179	Sucholas, J.	5989	Hobbs, A.	10471
Hendricks, H.	2985	Hoffmeister, F.	4141	Dever, P.	5193	Snell, J.	7363	Trojanowski, E.	11271
				Bechtel, G.	5233	King, T.	7369	Bromberg, T.	13083

Bus Operators

Baldwin, F. 915

THREE YEAR MEN**Conductors**

Ballersteadt, H.	1556	Graham, L.	3358	Horstman, C.	4742	Sullivan, M.	9934	Pauluch, J.	13866
Paul, G.	1788	Olson, M.	4608	Kalus, J.	6372	Lehman, W.	13842		

Motormen

Meyer, F., No. 2	169	Anderson, A.	4377	Mulligan, B.	5103	Mallak, T.	5669	Chubycheck, W.	11787
						Dreischarf, F.	10459	Harris, J.	13353

FOUR YEAR MEN**Conductors**

Krueger, P.	302	Golombiewski, L.	2158	Wegener, L.	3966	Fortman, G.	6010	Bejrowski, S.	11340
								Lund, H.	11504

Motormen

Gunderson, O. ..	1423	Mootz, N.	7425	Engenfeldt, C. ..	7601
------------------	------	----------------	------	-------------------	------

FIVE YEAR MEN**Conductors**

Wenzel, F.	8116	Anderson, A., No. 2	9514	Koziaz, H.	11496
-----------------	------	------------------------	------	-----------------	-------

SIX YEAR MEN**Conductors**

Anderson, A., No. 1	5594	Lenz, O.	5674
------------------------	------	---------------	------

Motormen

Harding, S.	6195	Liss, J.	8515	Eulberg, F.	11227
------------------	------	---------------	------	------------------	-------

SEVEN YEAR MEN**Conductors**

Latham, S.	4790	Versema, R.	10668
-----------------	------	------------------	-------

EIGHT YEAR MEN**Conductors**

Hennelly, R.	5406	Wichman, G.	12770
-------------------	------	------------------	-------

Motormen

Seelenbinder, P.	389	Kostelny, J.	5641
------------------	-----	-------------------	------

NINE YEAR MEN**Conductors**

Hintze, E. 5142

Motormen

Poltrock, W. 7789

TEN YEAR MEN**Conductors**

McManmon, J.	1550	Wegner, O.	3840	Crumberland, E.	6062	Miller, E.	6362
-------------------	------	-----------------	------	----------------------	------	-----------------	------

Motormen

Plotz, L.	5167	Kemer, A.	5191
----------------	------	----------------	------

ELEVEN YEAR MEN**Conductors**

Norcott, C.	586	Peterson, A. No. 1	4806	Olson, J.	5588	Fischer, R.	5684	Coleman, M.	9138
Sladeck, O.	752	Guntzberger, E.	5540	Dever, T.	5614	Svenson, C.	5702	Jacobsen, F.	9826
Barth, H.	1708			Gabel, O.	5626	Eckman, J. No. 1	8166	Toman, G.	11356
				Kalas, J.	5636	Torgersen, H.	8902	Schultz, L.	11550
								Wirth, H.	13570

Motormen

Corey, E. 1719

NOBLE

ONE YEAR MEN

Conductors

Name	Badge	Name	Badge	Name	Badge	Name	Badge	Name	Badge
Quealy, P.	970	Robertson, R.	4414	Rusnak, J.	7324	Kotowski, L.	9318	Keeshan, L.	11112
Enger, C.	1368	Quick, J.	5214	Lorentsen, L.	7366	Skorsky, S.	9400	Kobus, S.	11228
Clark, J.	1516	Claus, F.	5268	Cook, J.	8096	Olsen, W.	9462	Schroder, J.	11960
Marsch, F.	3008	Kozera, J.	5842	Kuntz, F.	8142	Hammerberg, L.	9618	Styles, R.	12230
Sanford, R.	3416	Kohnke, T.	6334	Caplinger, J.	8146	Killen, J.	9836	Guido, S.	12798
Greer, C.	3714	Young, H.	6644	Whelton, J.	8306	Ferrigan, P.	9912	Huber, P.	13170
Comiskey, J.	3776	Larisey, D.	7286	Weaver, T.	8790	Luka, J.	9940	Lohse, F.	13992
								Thurkow, S.	14156

Motormen

Campbell, W.	445	Zanders, T.	2511	Wischler, F.	7469	Mack, H.	8735	Mrugacz, W.	11459
Bosak, P.	903	Tyler, C.	2949	Clausen, C.	7617	Bottcher, G.	9257	Cronin, M.	12385
Mick, H.	1547	Lenihan, M.	4675	Wankel, H.	7775	Miller, F.	10455	Metz, H.	13401
Slowik, S.	1823	Bennett, L.	6687	Kuznick, G.	8379	Ipczynski, A.	11101	Smith, H.	13581
Hill, J.	2287	Jacobs, C.	7167	Mingo, A.	8703	Kupper, P.	11447		

TWO YEAR MEN

Conductors

Danielsen, C.	190	Iverson, A.	934	Blaige, T.	2116	Puralewski, F.	7192	Reichwein, W.	9894
Carlson, A., No. 2	800	Adams, B.	1094	Fischer, F.	4836	Schultz, E.	7984	Naprawnik, C.	10054
		Larke, E.	1422	Wohn, A.	6436	Kolasa, J.	8404	Kurth, A.	13544

Motormen

Czapiewski, S.	743	Fir, J.	3471	Madura, A.	6215	Schmidt, A.	6583	Wade, P.	9289
								Wilson, G.	13021

THREE YEAR MEN

Conductors

Thurkow, B.	1082	Harazin, J.	4390	Sexton, M.	5492	Rinnac, F.	8546	Hayes, D.	9268
Griebel, H.	1198	Corkle, T.	4404	Arendt, G.	8122	Neumann, B.	9156	Fischer, J.	11236
								Vesperman, W.	13654

Motormen

Barbrick, E.	2113	Tworek, C.	3841	Hammersmith, J.	9925	Rohr, W.	10409
-------------------	------	-----------------	------	-------------------------	------	---------------	-------

FOUR YEAR MEN

Conductors

Lenz, C.	5558	Lehmann, H.	7150	Moews, W.	8956	Kupeczyk, E.	10402	Johnson, G.	13976
---------------	------	------------------	------	----------------	------	-------------------	-------	------------------	-------

Motormen

O'Donnell, P. 8701

FIVE YEAR MEN

Conductors

Kenar, J.	2298	Wiedemann, E.	4590	Carlson, A., No. 1	7668
----------------	------	--------------------	------	-----------------------------	------

Motormen

Lowinski, J.	3169	Henderson, W.	4713	Jennings, J.	4919	Milka, J.	8843	Kennedy, M.	9517
-------------------	------	--------------------	------	-------------------	------	----------------	------	------------------	------

SIX YEAR MEN

Conductors

Harders, C.	4842	Landis, E.	5646
------------------	------	-----------------	------

SEVEN YEAR MEN

Conductors

Stevens, E. 1712

EIGHT YEAR MEN

Conductors

Kelleher, C.	1824	Smith, R.	6130	Schultz, C.	9342
-------------------	------	----------------	------	------------------	------

Motormen

Fiezel, G.	3533	McEvilly, J.	6001	Kuntz, L.	9169
-----------------	------	-------------------	------	----------------	------

NINE YEAR MEN

Conductors

Rohr, J.	494	Klinicke, J.	638	Poreell, A.	2822	Deckert, G.	6810	Wilewski, S.	7316
---------------	-----	-------------------	-----	------------------	------	------------------	------	-------------------	------

Motormen

McLaughlin, E.	1943	Klick, H.	8161
---------------------	------	----------------	------

Motormen

Name	Badge	Name	Badge	Name	Badge	Name	Badge	Name	Badge
Carlson, S. E.,									
No. 1	7471								

SIX YEAR MEN**Conductors**

Toale, J.	6286	Hanson, S.	10022	Burke, H. J.	11352	Elie, A.	13476
----------------	------	-----------------	-------	-------------------	-------	---------------	-------

Motormen

Holderness, W.	6275	Bronke, F.	10243
---------------------	------	-----------------	-------

SEVEN YEAR MEN**Conductors**

Lauermann, J.	9726
--------------------	------

Motormen

Adams, F.	13159
----------------	-------

EIGHT YEAR MEN**Conductors**

Bula, W.	5808	Tenney, J.	6634	Anton, N.	8334	Broberg, F.	11324
---------------	------	-----------------	------	----------------	------	------------------	-------

Motormen

Dinschel, N.	8913	Schlenkert, A.	11985
-------------------	------	---------------------	-------

NINE YEAR MEN**Conductors**

Love, T.	1188	Bailey, G.	5242	Olsen, W.	6600	Rockwell, J.	9108	Hammerlund,	
Faul, G.	4636	Mainock, H.	6046	Collins, J.,		Moriarity, J.	12294	C.	12406
				No. 2	8578				

TEN YEAR MEN**Conductors**

Killen, P.	3088	Mink, W.	3428	Reinhart, J.	3665	Naughton, J.	8872	Everts, J.	13530
-----------------	------	---------------	------	-------------------	------	-------------------	------	-----------------	-------

Motormen

Gliffe, A.	10285
-----------------	-------

ELEVEN YEAR MEN**Conductors**

Ternandt, W.	2096	Rocklitz, F.	5408	Beeman, W.	6400	Klein, J. G.,		Deering, A.	9234
McFadden, P.	2678	Collins, J.,		McGarry, J.	6406	No. 1	7426	Gloss, P.	9820
Johnston, D.	2680	No. 1	6030	Fissneck, N.	6704	Scanlon, A.	7516	Greenfield, T.	10766
Peterson, L.	3400	Keanne, P.	6268	McFadden, M.	6716	Barry, P.	7700	Anderson, J.	10970
Nielsen, J.	3456	McDowell, C.	6274	Bartos, W.	6866	Althaler, C.	7950	Harrity, M.	11358
Granahan, A.	3772	Lyons, C.	6350	Oswald, C.	6918	Nelson, O. H.	8040	Mertens, F.	12306
Wingblade, A.	5058	Dillon, T.	6368			Spitznagel, J.	8644	Madock, F.	13160

Motormen

McCaffrey, C.	5655	Flanders, F.	5897
--------------------	------	-------------------	------

LIMITS**ONE YEAR MEN****Conductors**

Ward, C. H.	1120	Buckley, J.	4618	Laverenz, R.	7544	O'Malley, J.	9682	Hennessy, F.	12108
Boldt, H.	1948	Maloney, R. J.	4752	Smith, C.	7708	Gollogly, J.	10046	Neuffer, E.	12184
Quinn, F. P.	2608	Keller, N.	5232	Sulhoff, A.	7762	Gross, A. J.	10508	Briesch, J.	12512
Childers, H.	3002	Jacobson, J.	5890	Northup, A.	7938	Cloud, R.	10594	Goulas, H.	12772
Hale, F.	3314	Henry, H. L.	6924	Beckers, L.	8434	Gass, G. O.	10976	Keane, W.	13218
Kelly, T.	3820	Martin, G.	6992	Leicht, G.	8746	Gorske, V.	11264	Anderson, H.,	
Buthman, C.	4130	Tarkington, F.	7480	Rickert, L.	9144	Ritter, C. E.	11514	No. 1	13862
Smith, E.	4288	Snow, G.	7506	Schott, J.	9596	Keane, P.	11674	Sundquist, H.	14314

Motormen

Galloway, G.	355	Elsome, W.	2997	Burke, M.	6303	Tepol, P.	8605	Robinson, E.	11499
Pelland, R.	1541	Anderson, H.	3407	Gabelson, A.	6429	Curry, P.	8693	Polte, E.	11543
Callahan, P.	1589	Peterson, A.	4123	Broh, H.	6441	Aidberg, J.	9087	Schulte, F.	11817
DeMey, O.	1599	Padour, J.	5379	Spiering, F.	6947	Swanson, A. E.	9645	Miller, E. E.	12211
Richter, C.	1827	Coyne, M.	5553	Hession, J.	7055	Fitzgerald, T.	9685	Eberlien, E.	12305
Struwe, M.	2663	Kugeland, R.	5629	Davis, J.	7179	Johnson, C.,		Rieschel, J.	13121
McPhee, A.	2691	Hartnett, P.	5683	Bertrand, H.	7353	No. 2	10693	Struck, F.	13223
				Riley, J.	7761	Caskin, E.	11435	Ullestad, A.	13345

TWO YEAR MEN

Conductors

Name	Badge	Name	Badge	Name	Badge	Name	Badge	Name	Badge
Elder, J.	1670	Oliver, A.	4432	Hundrieser, C.	7662	Fick, C.	9208	Gass, G.	10976
Bickelhaupt, L.	2412	Potratz, O.	7134	Josephson, J.	7816	Wallace, J.	9676	Gorske, V.	11264
Gartner, J.	2614	Murphy, G.	7414	Malmim, E.	8212	Nolan, E.	10882	Ritter, C.	11514
Ericson, C. G.	3356	Conroy, P.	7464	Holtz, H.	9088				

Motormen

Kline, J. H.	3395	Wigren, F.	6451	Vidas, E.	9377	Schultz, D.	12219	Arbuthnot, S.	12687
Carlson, G.	6199	Potstock, W.	8495	Sorensen, E.	10773	Sarnecki, H.	12509		

THREE YEAR MEN

Conductors

Frei, T. C.	3856	Langan, W.	5590	Jouron, A.	10512	Schwarzer, W.	11400	McNally, M.	13860
Buckley, J.	4618	Benson, E.	7530	Hall, H.	10926	Stawiery, L.	13506	Brooks, J.	14320

Motormen

Holman, W.	1371	Kissane, J.	7557	O'Connor, F., No. 2	8029	O'Connor, F., No. 1	8627	Hodgkinson, H.	11833
-----------------	------	------------------	------	-----------------------------	------	-----------------------------	------	------------------------	-------

FOUR YEAR MEN

Conductors

Heinson, A.	1768	Richardson, A.	3128	Strouse, C.	6312	Regulski, E.	7996	Gord, E.	10520
Carrion, H.	2604	Grisch, T.	3364	Duggan, J.	7754	Giese, F.	8960	Wandrey, R.	13310
						Traut, P.	9830	Reiss, M.	13546

Motormen

Emberg, E.	5589	Hawkins, E.	10919	Roberts, W.	11033
-----------------	------	------------------	-------	------------------	-------

FIVE YEAR MEN

Conductors

Johnson, E.	7930	Schmidt, L.	12774	Samp, O.	14298
------------------	------	------------------	-------	---------------	-------

SIX YEAR MEN

Conductors

Gulick, R.	428	Dunphy, P.	9072
-----------------	-----	-----------------	------

MOTORMEN

Sherden, C.	5441
------------------	------

SEVEN YEAR MEN

Conductors

Mueller, F.	1580	Howley, P.	9604
------------------	------	-----------------	------

EIGHT YEAR MEN

Conductors

Holub, E.	144	Dwyer, J.	432	Wright, A.	1792	Mueller, W.	6506	Roche, M.	7004
								Barker, G.	8522

Motormen

Elberson, P.	9799
-------------------	------

NINE YEAR MEN

Conductors

Luttmer, W.	9486	Knispel, F.	10784	Cromie, W.	12094
------------------	------	------------------	-------	-----------------	-------

TEN YEAR MEN

Conductors

Huntzicker, E.	1048	Newberg, J.	5966
---------------------	------	------------------	------

ELEVEN YEAR MEN

Conductors

Salmon, A. J.	270	Amann, G.	4448	Tansey, P.	5652	Wilberschied, E.	8202	Anderson, H., No. 1	13862
Breinig, A. F.	2774	Stadler, A.	4844	Johnson, F.	6468	Keane, W.	13218	Sundquist, H.	14314
Duprey, E.	3780	Christie, A.	4964	Carlson, P.	6520				

Motormen

Zeches, P.	6977	Lefebvre, E.	9099
-----------------	------	-------------------	------

DEVON

ONE YEAR MEN

Conductors

Name	Badge	Name	Badge	Name	Badge	Name	Badge	Name	Badge
Erickson, C.	358	Knoess, C.	4936	Backhaus, A.	6646	Huffman, P.	9132	Conningham, J.,	
Washa, W.	420	Munster, T.	5006	Cunningham, J.,		Holtberg, H.	9326	No. 2	12404
Reidel, H.	474	Laskey, J.	5054	No. 1	6712	O'Gara, J.	9802	Sullivan, J.	12518
Carlson, H.	1086	Peters, A.	5314	O'Malley, J.	6798	Todd, E.	9822	Philbin, M.	12572
Norlin, C.	1118	Koester, H.	5330	Prentiss, C.	6940	Machesney, W.	9958	Stasek, E.	12932
Horrigan, T.	1476	Lee, D.	5370	Rigby, W.	7108	Loveless, W.	10456	Thacner, E.	12974
Holohan, J.	1646	Shanahan, T.	6002	Warner, W.	7274	Spain, R.	11226	Peterson, H.,	
Muir, A.	2448	O'Brien, E.	6004	Whalen, J.	7362	Wrenn, J.	11238	No. 2	13186
Looper, H.	2486	Staschick, F.	6024	Lohrmann, J.	7672	Johnson, M.	11382	Willis, E.	13412
McAuliffe, R.	2708	Lonquist, W.	6068	Doogan, F.	7896	Stricker, M.	11468	Hagstrom, P.	13602
Haberstick, F.	2798	Wallace, J.,		McDermott, F.	7976	Coleman, W.	11584	McDonnell, M.	13892
Sweeney, J.	2064	No. 2	6210	Hoban, J.,		Hoffstadt, H.	11660	Anderson, H.	13898
Scheel, E.	4466	Dahl, O.	6220	No. 1	8248	Merkel, A.	12296	Geldmeyer, F.	13904
Strass, N.	4580	McKiel, C.	6246	Blaser, J.	8336	Conway, J.	12356	Gallagher, P.	13952
Heirty, P.	4616	Malone, J.	6348	Karl, J.	8454	Stawiry, E.	12360	Rawls, F.	14006
Murtaugh, W.	4648	Vogel, A.	6380	Roberts, J.	8678	Lefebvre, E.	12380	Baehrend, A.	14316
McGilles, R.	4878	Daly, P.	6574	Steigler, M.	8692			Harrington, J.	14476

Motormen

Bogstrom, J.	263	Land, G.	3339	Landerholm, C.	5597	Zimmerman, W.	9803	Buss, A.	11895
Anderson, A.,		Wolff, R.	3397	Linderman, J.	5675	Goodwin, J.	10007	Van Ossenbrug-	
No. 2	851	Heidelmier, G.	3459	Finan, P.	5737	Rowlewitz	10015	gen, C.	11977
Ryley, F.	1047	Joyce, J.	3551	Blaul, F.	5813	Ellis, J.	10083	Shanahan, P.	12019
Harris, J.	1203	Gill, M., No. 1	3763	Stoll, E.	7043	Cahill, P.	10193	Prader, E.	12089
Goerens, F.	1473	Zelinko, G.	3835	Olson, W.	7089	Winkelborn, A.	10469	Dreyer, M.	12209
Lucas, G.	1597	Paulson, N.	3871	Johnson, A.,		Maxey, W.	10615	Rasmussen, J.	12273
Skoog, G.	1698	Eggert, A.	3937	No. 1	7265	Anderson, J.	10715	Schaaf, E.	12309
Neis, N.	1741	Schutz, A.	4321	Werdell, J.	7687	Emil, P.	10777	Jacoby, A.	12335
Edmons, L.	1917	Carlson, O.	4373	Hayes, W.	8203	Mathisen, G.	10937	Anderson, A.,	
Jaques, E.	2895	Murray, P.	4981	Ferguson, H.	9201	Jarr, O.	11377	No. 3	12627
Burgstrom, A.	3069	Koss, W.	5177	Higgins, J.	9515	Walsh, P.,		Itter, A.	12993
						No. 2	11401	Lawlor, J.	13417

BUS OPERATORS

Butts, W.	205	Wagner, C.	2969	Hauser, E.	8019	Devine, T.	10072	O'Neill, L.	14082
Willson, L.	1200	Moser, G.	5954	Hickey, J.	8851	Schultz, F.	11448		
Prester, A.	1831	Harte, J.	6558	Carlson, H.	9828	Woelke, W.	12521		

TWO YEAR MEN

Conductors

Johnson, A.,		Mahoney, J.,		Hughes, E.	5380	Burke, P.	9362	Johnson, H.,	
No. 1	150	No. 1	3806	Sperry, F.	5698	Downie, S.	9834	No. 2	12322
Oliver, F.	206	O'Grady, C.	4660	Carlson, C.	6398	Riley, J.	10406	Johnson, H.,	
Ross, C.	1386	Olson, P.	4756	Mathiesen, E.	6784	Kearns, J.	10788	No. 3	12470
Rasmussen, J.	2262	Linden, W.	5068	Heinz, H.	6794	Wallace, J.,		Hansen, N.	13034
Kuehn, J.	2526	Borgstrom, L.	5248	Graff, G.	7152	No. 1	10808	Kitterman, R.	13152
Tickner, B.	3038	Reynolds, J.	5272	Watterson, H.	8742	Tyrrell, J.	10872	Stanton, R.	13352
Birkemo, C.	3276	Schwall, N.	5292	Loughran, J.	8966	Coleman, M.	11468	Handley, J.	13510
Kowalski, E.	3504	Schrey, J.	5300	Hertel, P.	9008	Simpson, F.	11624	Negele, W.	13918
Wagner, A.	3748	Cryder, W.	5364	Cohn, J.	9062	Timm, W.	11904	Voss, W.	14016
								Gislason, L.	14048
								Hagen, L.	14136

Motormen

Sutton, J.	669	Backholm, J.	4911	Gustafson, S.	7051	Peterson, A.,		Rohden, A.	12053
Carver, B.	1739	Clay, F.	5303	Carlson, C.	7373	No. 1	8899	Gundlach, G.	12287
Green, P.	4855	Straus, J.	5785	Gustafson, G.	8497	Mulhall, J.	10233	Engstrom, R.	12403

Bus Operators

Jorgenson, V.	658	Schmidt, E.	3958	Laskowski, S.	4359	Montgomery, R.	7698	Wickman, F.	9166
--------------------	-----	------------------	------	--------------------	------	---------------------	------	------------------	------

THREE YEAR MEN

Conductors

Johanson, J.	3040	Nisson, J.	5916	Connelly, E.	7584	Rogers, J.	10730	Hoglund, G.	14150
Bollinger, A.	4158	O'Connor, J.	6164	Tarrant, S.	8494	Johnson, A.,		York, D.	14170
Hartnett, T.	4410	Gillespie, J.	6724	Joll, L.	9394	No. 3	10818	Moran, H.	14304
Zeeh, W.	5238	McHugh, J.	7258	Duke, M.	9696	Gebauer, E.	11672	Morrison, D.	14402
Matern, R.	5700	Ketter, J.	7356	Hoppe, T.	10694	Susralski, J.	11874		

Motormen

Hess, R.	5263	Noren, C.	7027	Finnegan, J.	11969	Knadle, A.	12167	Eberle, C.	12899
---------------	------	----------------	------	-------------------	-------	-----------------	-------	-----------------	-------

FOUR YEAR MEN

Conductors

Asp, A.	4892	Arend, N.	6760	McCormick, P.	8822	Kenny, J.	10186	VenDenEeden,	
Peterson, M.	6632	Malmer, B.	7440	Malone, T.	9000	Dolherty, P.	10614	J.	13190
McGreevy, J.	6654	Piche, W.	8588	Gross, A.	9898				

Motormen

Name	Badge	Name	Badge	Name	Badge	Name	Badge
Leaf, C.	6137	Moore, J.	7681	Lemm, F.	8541	Paice, L.	10881
						Hager, D.	12547

FIVE YEAR MEN**Conductors**

Seidel, D.	266	Hermanson, C.	2696	Bennett, J.	4576	Geach, B.	6914	Burm, A.	13210
Malone, M.	2518	Clutts, J.	4528	Baston, E.	6240	McHugh, M.	9496	Barrett, M.	13652
						Williams, C.	12170	Baertner, A.	14982

Bus Operators

Swanson, A.11971

SIX YEAR MEN**Conductors**

Furlong, J.	1970	Lizars, H.	5484	Baker, D.	10042	Johnson, C.	11310	Boyle, P.,	
		McArthur, W. ..	9674	Eckley, B.	10720	Koncar, F.	12748	No. 2	14076

Motormen

Pflug, H.11197

SEVEN YEAR MEN**Conductors**

Burger, O.	2030	Warren, L.	13456
-----------------	------	-----------------	-------

EIGHT YEAR MEN**Conductors**

Donnelly, G.	2252	Gallimore, R. ..	5036	Maloney, D.	7608	Philbin, A.	8286	Kundert, F.	12642
Nelson, G.	3974	Naylor, W.	6590	Vaughn, A.	7986	Gustafson, H.	10642	Wilhelm, J.	14086
								McKenzie, L.	14098

NINE YEAR MEN**Conductors**

Lynch, T.	212	Sullivan, M.	4346	Scuffy, J.	5118	Horan, M.	6012	Harvey, W.	7092
Goedert, N.	3492	Paschke, E.	4356	Bolty, R.	5302	Sheridan, M.	6826	Rice, J.	9364
						Manson, G.	6880	Chartrand, C.	13468

Motormen

Gustafson, D.	5157	Grady, F.	11319
--------------------	------	----------------	-------

TEN YEAR MEN**Conductors**

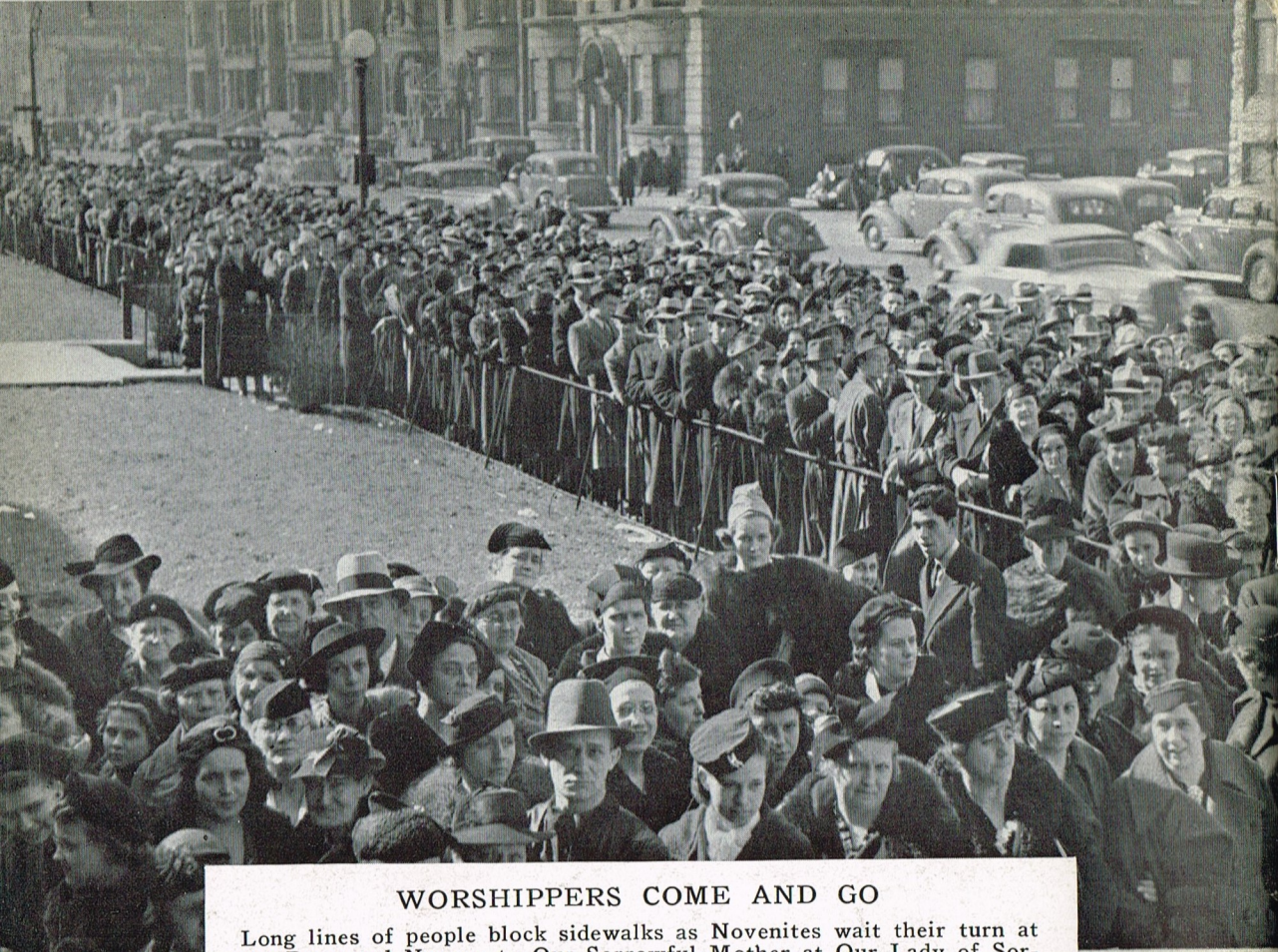
Boyington, S.	1548	Elmer, C.	2408	McDevitt, W.	4202	Joerger, C.	5412	Smith, C.	10586
								Touhy, T.	11602

ELEVEN YEAR MEN**Conductors**

Size, M.	948	Beach, C.	4460	McGowan, T. ..	5746	Pohlman, W.	7102	Devane, J.	10106
Flanderka, P.	1990	Glover, J.	4532	McCurdy, J.	5918	Karnett, L.	7330	McHale, F.	11192
Krughoff, J.	2734	Ouitno, H.	4824	Toepper, F.	6228	Johnson, H.,		Weir, T.	12976
Buhlman, F.	3798	Burr, J.	4854	Larson, L.	6250	No. 1	7438	Heraty, E.	13260
Rhode, F.,		Storms, G.	5070	Marks, J.	6548	Berckes, R.	7536	Christensen, L.	14566
No. 2	4120	Mosiman, F.	5294	Egan, J.	6842	Taylor, T.	8708		

Motormen

Rademacher, G. 5063



WORSHIPPERS COME AND GO

Long lines of people block sidewalks as Novenites wait their turn at the Perpetual Novena to Our Sorrowful Mother at Our Lady of Sorrows Church at 3121 Jackson Boulevard. Below: Worshippers, their Novena made, depend on the Surface Lines system as they flock to cars at Kedzie and Jackson.

