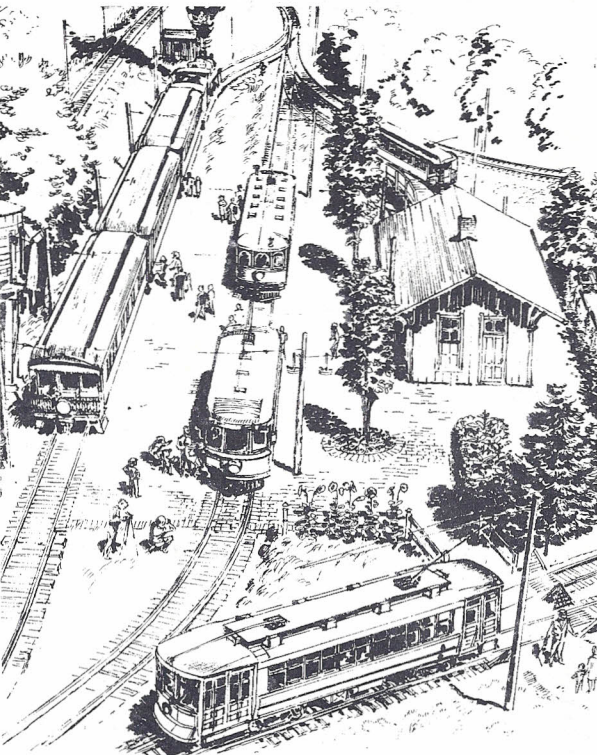
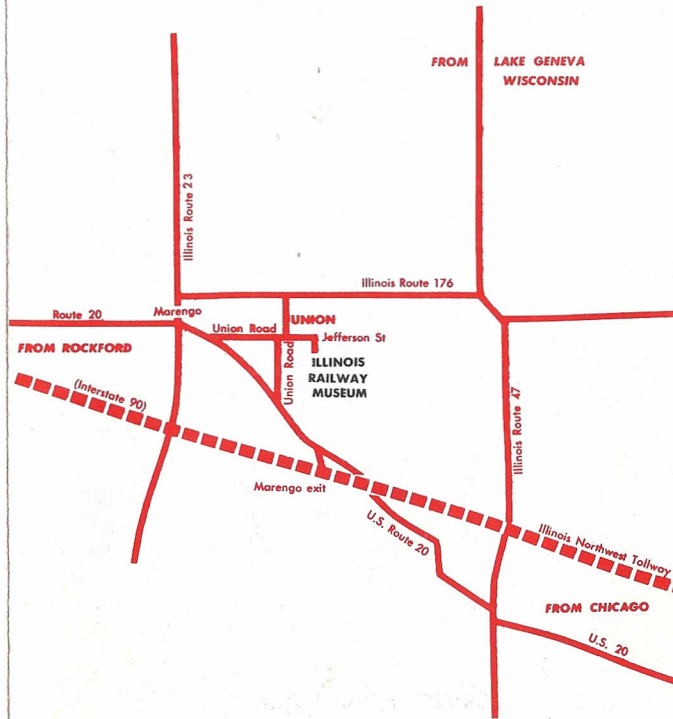


**EQUIPMENT INCLUDES**

- STEAM ENGINES
- STREETCARS
- INTERURBAN CARS
- ELEVATED CARS
- BURLINGTON ZEPHYR
- STEAM CARS
- PRIVATE CARS
- FREIGHT CARS



**HOW TO GET TO THE ILLINOIS RAILWAY MUSEUM**



**FROM CHICAGO**

Take the Illinois Northwest Tollway (Interstate 90) to U.S. Rte. 20 Marengo exit. Drive Northwesterly on .20, about 4½ miles, to Union Road. Take Union Road north and east 1 mile through town (on Jefferson St.) to Olson Road (end of Jefferson Street). Turn south to Museum.

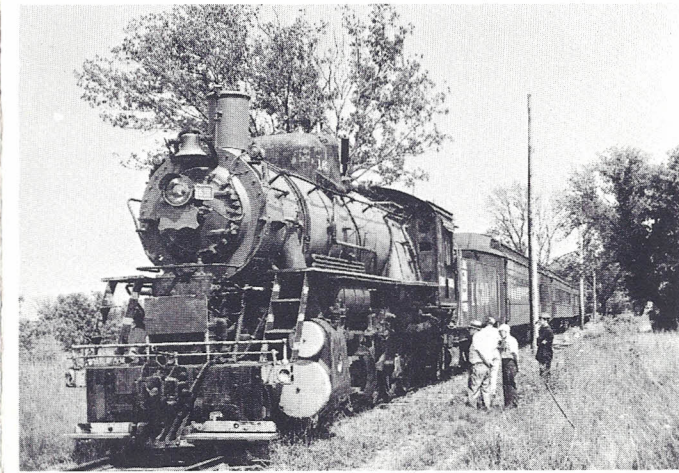
**FROM MILWAUKEE AND EASTERN WISCONSIN**

Take any road to Illinois Route 176. Follow west, 5½ miles west of Illinois Route 47 to Union Road. Turn south to Jefferson Street, Union (first street south of railroad). Take Jefferson Street east ¾ mile to Olson Road (end of Jefferson Street). Turn south to museum.

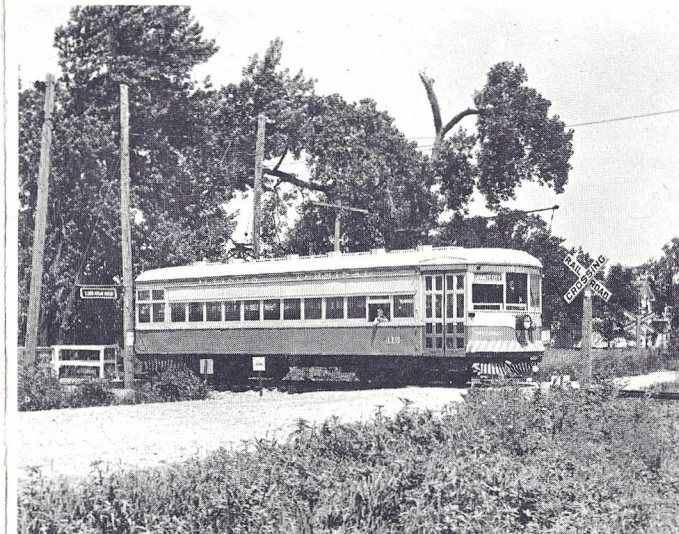
**FROM ROCKFORD AND WESTERN WISCONSIN**

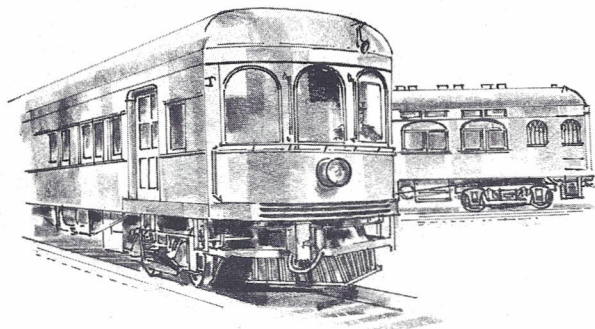
Take U.S. Route 20 (or interstate 90 and exit at Route 20 at Cherry Valley-Belvidere) through Marengo. About 1 mile east of Marengo, turn left on Union Road. Take about 2¼ miles east through Union to Olson Road (end of Union Road-Jefferson Street). Turn south to Museum.

**THE ILLINOIS RAILWAY MUSEUM IS LOCATED ABOUT 25 MILES SOUTH OF LAKE GENEVA**



**ILLINOIS RAILWAY MUSEUM**





**FREE PARKING**

**FREE ADMISSION**

**RIDES:**

**ADULTS 60¢**

**CHILDREN 30¢**

Remember the Clang, Clang of the streetcar, the sounds of the mighty steam locomotive, the quiet, breezy ride through the countryside in an Interurban car?

These sights and sounds have almost completely disappeared from the American scene. But the Illinois Railway Museum at Union, McHenry County, has sought to preserve them.

The Museum has a collection of 70 steam engines, streetcars, interurban cars, and steam railroad cars. President Taft and Wilson took official trips on three of our cars. And we have two private cars owned by the great copper magnates (and U.S. Senators) of the 1905 era. Several pieces of this equipment are operated over the museum's demonstration railway. At present about 1½ miles has been constructed, with another 4 miles under construction.

Visitors may examine the equipment on display at their leisure. Due to safety requirements, however, we do not allow individuals to climb on the cars and engines. Our cars are generally not open for interior inspection, except for those in operation.

**BRING YOUR CAMERA!**

And bring lots of film! Our collection of equipment is extensive and varied. Our trains operate through the rural Illinois countryside.

**VISIT OUR GIFT SHOP**

The Museum displays and Gift Shop are located at our 1851 railway depot (the oldest railway depot west of Pittsburgh). Here you may acquire soda pop, color postcards, books, and other railroad oriented items. Or just browse.



**MEMBERSHIP**

Membership is open to all. Dues are \$5.00 per year for an Associate. Members receive a pass on the railroad, the museum newsletter, and discounts on certain educational materials. Associates are not required to contribute time to the organization, but may do so if desired. Further information and applications may be obtained from the Gift Shop, or ticket sellers.

**A NOT FOR PROFIT CORPORATION**

The Museum is a recognized not-for-profit corporation, located within an hour's drive from Chicago, and only 80 miles from Milwaukee. It was founded in 1953, and volunteers, serving without pay, do most of the work.

Capital Improvements are made possible by donations from the public. The museum is not tax-supported, nor connected with the railroad industry. Gifts are tax-deductible.

**SCHEDULE**

**ELECTRIC CARS**

**MAY:** Sundays, also Memorial Day, 12:00 noon - 6 pm.

**JUNE:** Saturdays and Sundays, 12:00 noon - 6:00 pm.

**DAILY:** June 16 through August 31, 10:00 am - 5:00 pm.

**LABOR DAY — OCTOBER:** Sundays only, 12:00 noon - 5:00 pm.

Other times by advance arrangements.

**ELECTRIC CARS** run half-hourly or as required.

**STEAM POWERED TRAINS**

Steam Powered Trains will operate Memorial Day, and Sundays in June, July and August, also on Labor Day.

Steam Powered Trains run hourly, 12:00 noon - 6:00 pm, or as required.

**ILLINOIS RAILWAY MUSEUM**

**BOX 165**

**UNION, ILLINOIS 60180**

*Notice: The Illinois Railway Museum reserves the right to substitute equipment for that advertised, or to cancel any or all operations or trains at its discretion. The Illinois Railway Museum is not a common carrier. Its rail operations are for demonstration purposes only, and the Museum reserves the right to refuse admittance to any person or persons for any reason. Not responsible for accidents.*