

Free Parking

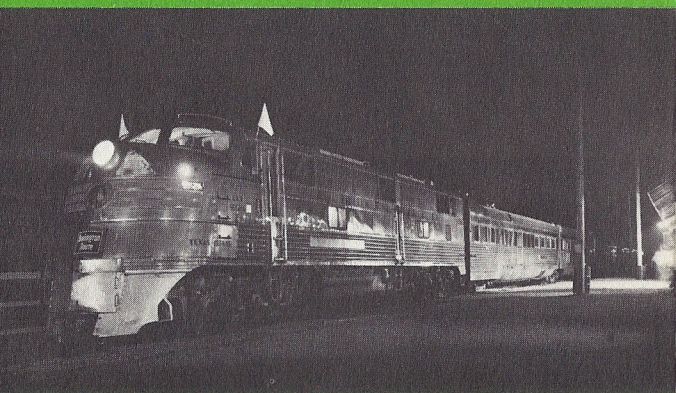
Nominal Admission

ADULTS:	50¢
CHILDREN	25¢
CHILDREN under 6	No Charge

Train Fares:

ADULTS:	\$1.00
CHILDREN	.50

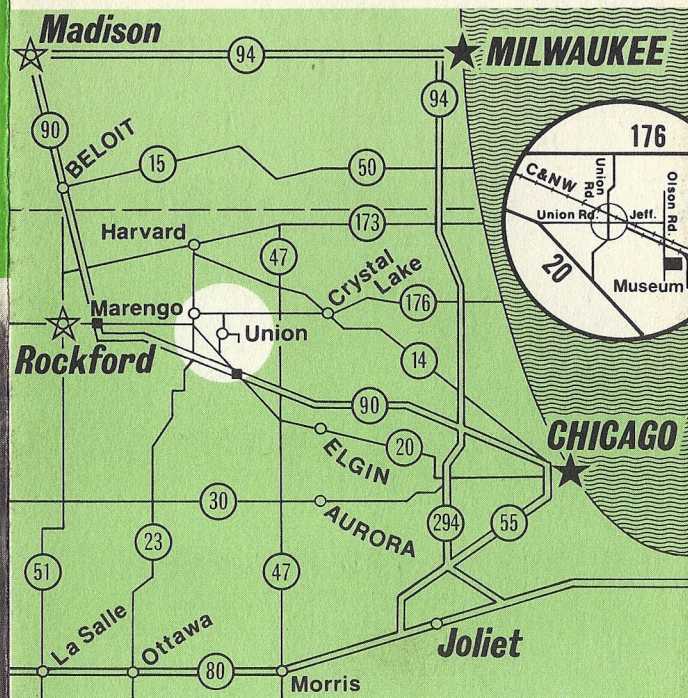
Reduced Fare Two-Ride Tickets (Individual) are available when two or more rides are offered.



**ILLINOIS**

Office of Tourism  
Department of Business and  
Economic Development  
printed with state and local funds

## Getting to the Museum



### FROM CHICAGO

Take the Illinois Northwest Tollway (Interstate 90) to U.S. Rte. 20 Marengo exit. Drive Northwesterly on 20, about 4½ miles, to Union Road. Take Union Road north and east 1 mile through town (on Jefferson St.) to Olson Road (end of Jefferson Street). Turn south to the Museum.

### FROM MILWAUKEE AND EASTERN WISCONSIN

Take any road to Illinois Route 176. Follow west, 5½ miles west of Illinois Route 47 to Union Road. Turn south to Jefferson Street, Union (first street south of the railroad). Take Jefferson Street east to Olson Road (end of Jefferson Street). Turn south to the museum.

### FROM ROCKFORD AND WESTERN WISCONSIN

Take U.S. Route 20 (or Interstate 90 and exit at Route 20 at Cherry Valley-Belvidere) through Marengo. About 1 mile east of Marengo, turn left on Union Road. Take Union Road about 2¼ miles east through Union to Olson Road (end of Union Road-Jefferson Street). Turn south to the Museum.

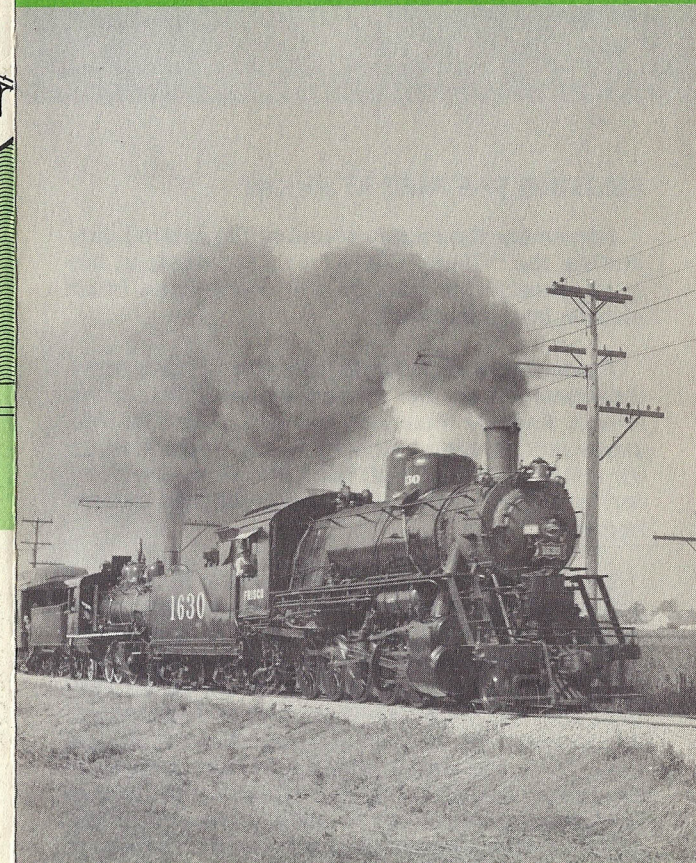
**ILLINOIS  
RAILWAY  
MUSEUM**

Located at Union, Illinois 60180, in McHenry County Phone 815-923-2488



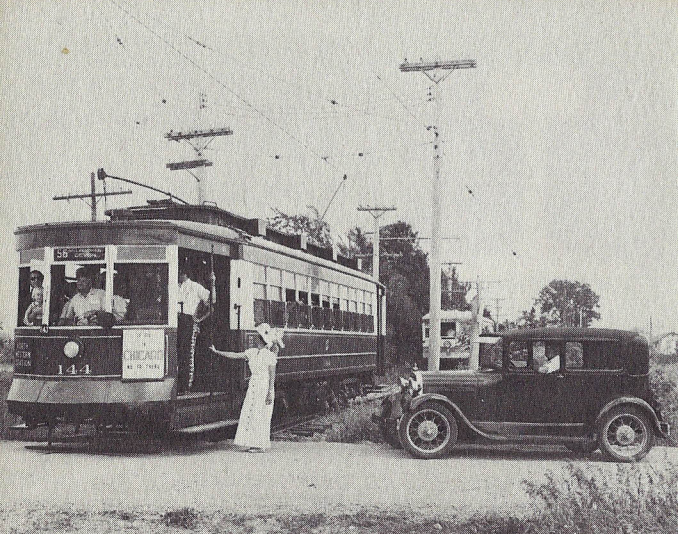
# ILLINOIS RAILWAY MUSEUM

Located at  
Union, Illinois  
in McHenry County



## Ride Our Demonstration Railroad - Steam Trains, Streetcars, Interurbans





## RELIVING THE PAST AT UNION

Remember the mighty sound of the steam Locomotive, the "Clang, Clang," of the streetcar, the quiet, breezy ride through the countryside in an electric interurban car?

These sights and sounds have almost completely disappeared from the American scene. Yet, at the Illinois Railway Museum, you can still ride into yesteryear behind a belching steam locomotive, go for a streetcar ride or sit back and enjoy the comfort and quiet speed of an heavy electric interurban car.

The Museum's historic collection of railroad equipment is comprised of over 140 cars and locomotives. This comprehensive array of equipment includes steam locomotives, a gas electric car, steam road cars, a complete silver diesel streamliner, interurban cars, elevated cars and streetcars. The Museum has an extensive collection of Chicago cars. There are even examples of operating electric trolley coaches, the kind typical of those that replaced the streetcars in many American cities. Much of this equipment has been completely or partially restored and is operated over the Museum's 1½ mile long demonstration railroad for your fun and enjoyment.

Visitors are free to view equipment on display, however, due to safety requirements, we do not allow individuals to climb on cars and engines. Most of our cars are not open for interior inspection with the exception of those in operation.

# Schedule & Timetable

## STEAM TRAINS

Sundays: May 1–October 15  
Also, Memorial Day, Independence Day  
and Labor Day. (Sunday Schedule)

Saturdays: July 1–Labor Day

Weekdays: Wednesdays, Thursdays,  
and Fridays, July 1–Labor Day

Steam trains run hourly, or as required.

**Other Times: By advance arrangement.**

## ELECTRIC CARS

Sundays: March 1–November 30  
11:00 AM–6:00 PM  
Also, Memorial Day, Independence Day  
and Labor Day.

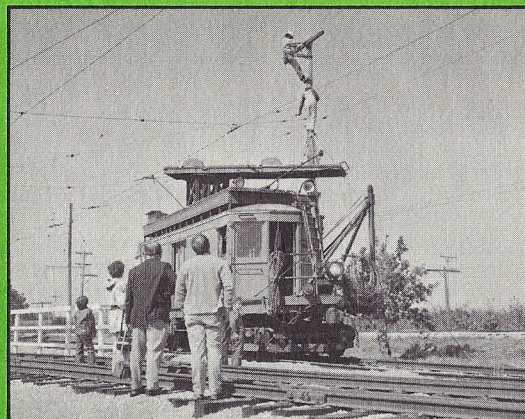
Saturdays: May 1–September 30

Weekdays: Memorial Day–Labor Day  
10:00 AM–5:00 PM

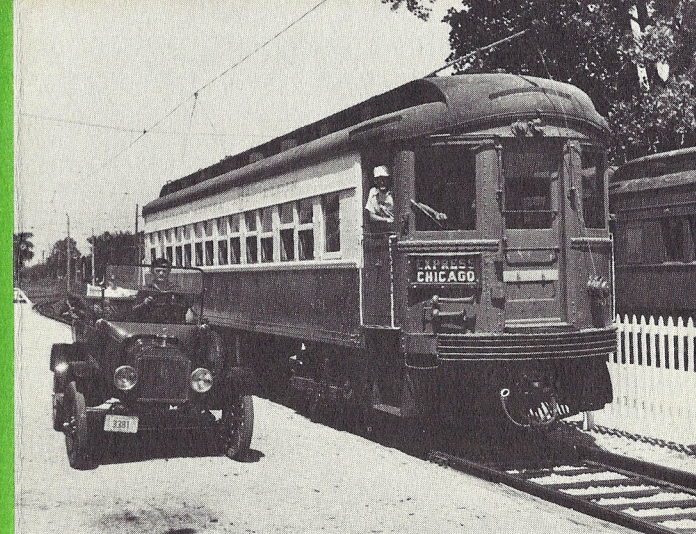
Electric cars run half-hourly, or as required.

**Other Times: By advance arrangement**

All schedules subject to change without notice.



NOTICE: The Illinois Railway Museum reserves the right to substitute equipment for that advertised, or to cancel any or all operations or trains at its discretion. The Museum is not a common carrier. Its rail operations are for demonstration purposes only, and the Museum reserves the right to refuse admittance to any person or persons for any reason. The Museum is not responsible for accidents.



## VISIT OUR BOOK SHOP

The Museum displays and Book Shop are located in our 1851 ageless railroad depot. Here you may acquire soda pop, postcards, books and a variety of other railroadiana, or simply browse to your hearts content.

## MEMBERSHIP

New members are always welcome and there is plenty of activity to engage the interests and skills of anybody interested in our museum. Annual dues are \$8.00 for an Associate Membership which entitles the member to a pass on the railroad, the museum newsletter and discounts on certain educational material. Associate members are not required to contribute time to the Museum, but may do so if desired. Information and applications may be obtained from the Book Shop or ticket agent in the depot.

## A NOT-FOR-PROFIT CORPORATION

The Illinois Railway Museum is a not-for-profit, educational corporation which was organized in 1953. The Museum is supported primarily by contributions and by revenue derived from the visiting public. Volunteers serving without pay do most of the work. All contributions to the Museum are tax-deductible.