

Free Parking

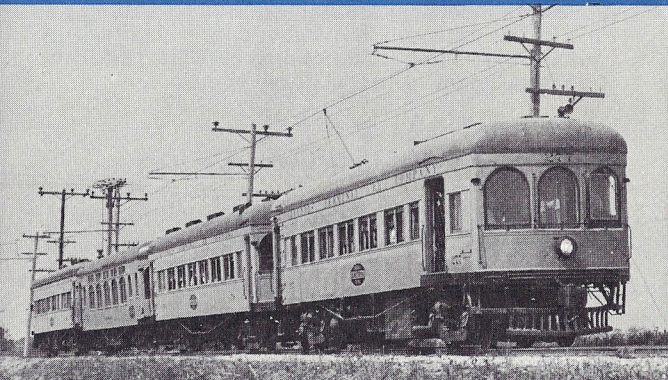
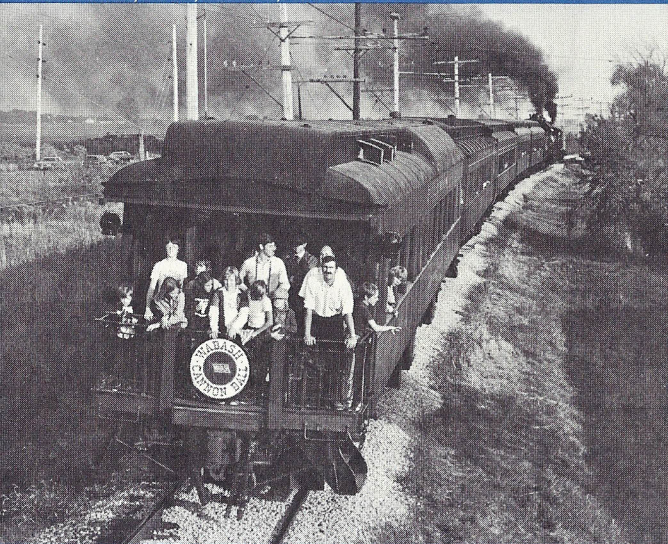
One price covers rides and admissions.

	ON DAYS WHEN STEAM TRAINS OR BURLINGTON ZEPHYR OPERATES	ALL OTHER TIMES	RAILFAN WEEKEND AND MEMBERS' WEEKEND
--	--	-----------------------	--

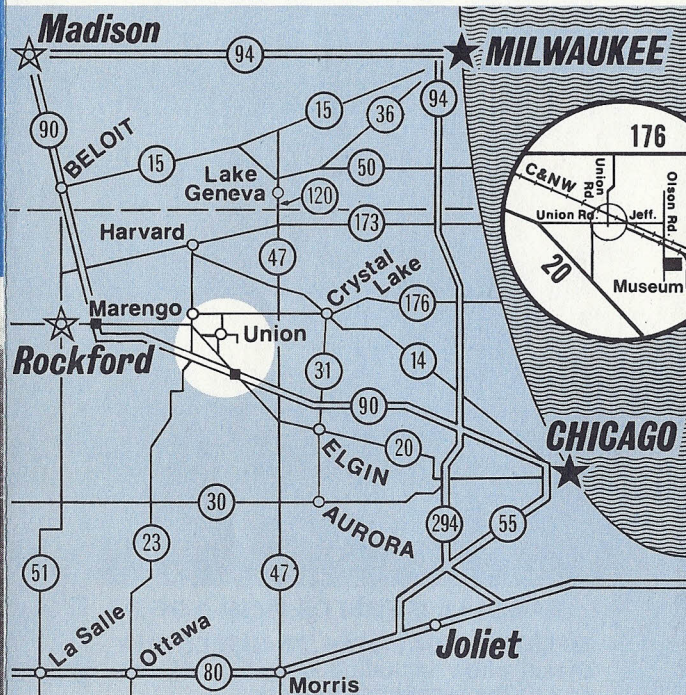
ADULTS:	\$4.50	\$3.50	\$6.50
CHILDREN:			
5-11	\$2.25	\$1.50	\$2.25
under 5	FREE	FREE	FREE

SENIOR CITIZENS AND GROUPS OF 15 OR MORE—50¢ OFF ABOVE RATES. Apply at gate.

Write in advance for charter information to Charter Director, IRM, Union, Ill. 60180.



Getting to the Museum



FROM CHICAGO

Take the Illinois Northwest Tollway (Interstate 90) to U.S. Rte. 20 Marengo exit. Drive Northwesterly on 20, about 4 1/2 miles, to Union Road. Take Union Road north and east 1 mile through town (on Jefferson St.) to Olson Road (end of Jefferson Street). Turn south to the Museum.

FROM MILWAUKEE AND EASTERN WISCONSIN

Take any road to Illinois Route 176. Follow west, 5 1/2 miles west of Illinois Route 47 to Union Road. Turn south to Jefferson Street, Union (first street south of the railroad). Take Jefferson Street east to Olson Road (end of Jefferson Street). Turn south to the museum.

FROM ROCKFORD AND WESTERN WISCONSIN

Take U.S. Route 20 (or Interstate 90 and exit at Route 20 at Cherry Valley-Belvidere) through Marengo. About 1 mile east of Marengo, turn left on Union Road. Take Union Road about 2 1/4 miles east through Union to Olson Road (end of Union Road-Jefferson Street). Turn south to the Museum.



**ILLINOIS
RAILWAY
MUSEUM**

Located at Union, Illinois 60180, in McHenry County

Business Phone: 815 / 923-4391

4/85—100M

NEW FOR 1985
RIDE OUR NEW MAINLINE EXTENSION
TO SEEMAN ROAD!

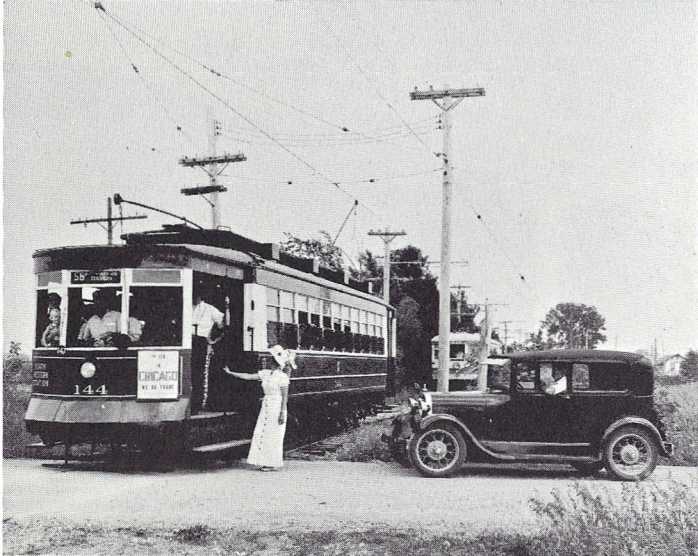


**ILLINOIS
RAILWAY
MUSEUM**

Located at
Union, Illinois
in McHenry County



*Ride Our Demonstration
Railroad—Steam Trains,
Streetcars, Interurbans*



RELIVING THE PAST AT UNION

Remember the mighty sound of the steam locomotive, the "Clang, Clang," of the streetcar, the quiet, breezy ride through the countryside in an electric interurban car?

These sights and sounds have almost completely disappeared from the American scene. Yet, at the Illinois Railway Museum, you can still ride into yesteryear behind a real steam locomotive, go for a streetcar ride or sit back and enjoy the comfort and quiet speed of a heavy electric interurban car.

The Museum's historic collection of railroad equipment is comprised of over 200 cars and locomotives. This comprehensive array of equipment includes steam locomotives, gas-electric cars, diesel locomotives, steam road cars, a complete silver Zephyr streamliner, interurban cars, elevated cars and streetcars. The Museum has an extensive collection of Chicago streetcars. There are even examples of operating electric trolley coaches, the kind typical of those that replaced the streetcars in many American cities. Much of this equipment has been completely or partially restored and is operated over the Museum's 4 mile long demonstration railroad for your fun and enjoyment.

Visitors may view equipment on display; however, due to safety requirements, we do not allow individuals to climb on cars and engines. Most of our cars are not open for interior inspection with the exception of those in operation.

Schedule & Timetable

STEAM TRAINS

Sundays: May 19—October 6
Saturdays: July 6—August 31
Also, Memorial Day, Independence Day and Labor Day.

Steam trains run hourly, or as required.

BURLINGTON ZEPHYR

Saturdays: June 1, 8, 15, 22, 29.
Also Memorial Day, Independence Day and Labor Day.

ELECTRIC CARS

Sundays: April 21—October 27
11:00 AM—5:00 PM
Also, Memorial Day, Independence Day and Labor Day.

Saturdays: May 4—September 28

Weekdays: Memorial Day—Labor Day
10:00 AM—4:00 PM

Electric cars run half-hourly, or as required.

For further information, telephone 815-923-2488 or 312-262-2266 (in Chicago)

All schedules subject to change without notice.

SPECIAL EVENTS FOR 1985

MEMORIAL DAY-MAY 27-DIESEL DAY
Diesel show including operation of several of the Museum's diesels.

JUNE 16-RAILROAD DAY Handcar rides, caboose rides, many pieces of equipment operating, special displays.

JULY 4-TROLLEY PAGEANT 4th of July Special—IRM's annual trolley parade—largest operation of Antique Trolleys in the midwest.

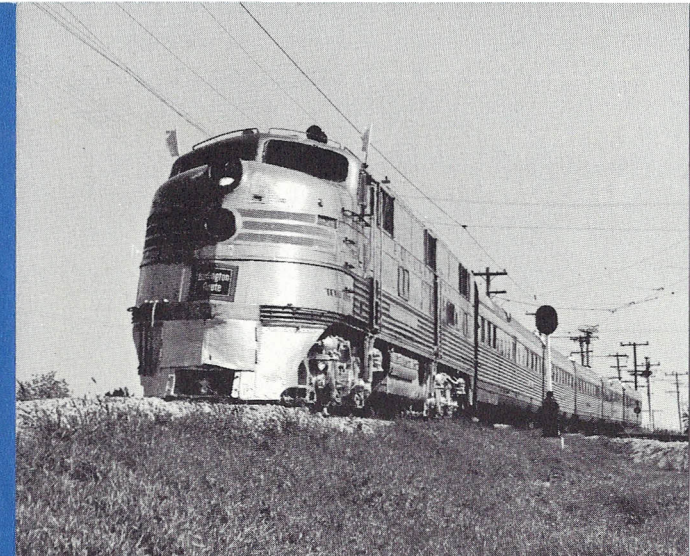
AUGUST 4-10 Steam powered passenger train operated everyday for 1 week only.

AUGUST 31, SEPTEMBER 1, 2-LABOR DAY RAILFAN WEEKEND.

Railroad Equipment Spectacular—steam, diesel and electrics.

OCTOBER 5, 6-MEMBERS' DAYS

NOTICE: The Illinois Railway Museum reserves the right to substitute equipment for that advertised, or to cancel any or all operations or trains at its discretion. The Museum is not a common carrier, its rail operations are for demonstration purposes only, and the Museum reserves the right to refuse admittance to any person or persons for any reason. The Museum is not responsible for accidents.



VISIT OUR BOOK SHOP AND REFRESHMENT STAND

The Museum displays and Book Shop are located adjacent to our ancient 1851 railroad depot. Here you may acquire postcards, books and a variety of other railroadiana, or simply browse to your heart's content.

Light snacks and beverages are available at our refreshment stand.

MEMBERSHIP

New members are always welcome and there is plenty of activity to engage the interests and skills of anyone interested in our museum. Annual dues are \$15.00 for an Associate Member—\$25.00 for a family. Members are entitled to a pass on the railroad, the museum newsletter "Rail and Wire" and discounts on certain educational materials. Associate members are not required to contribute time to the museum, but may do so if desired. Information and applications may be obtained from the ticket agent or in the Book Shop.

A NOT-FOR-PROFIT ORGANIZATION

The Illinois Railway Museum is a not-for-profit, educational corporation which was organized in 1953. The Museum is supported primarily by contributions and by revenues derived from the visiting public. Volunteers serving without pay do most of the work. All contributions to the museum are tax deductible.