

File	x	Special	x
Post	x	Type	Y
R376-13			

# Rail Service Bulletin

**To:** All Concerned

**Subject:** Snowflake Charter Train - Illinois Railway Museum

**Line/Route:** Blue, Pink, Green, Orange, Brown, Purple, Yellow, Red Lines

**Crew:** 1 Rail Instructor (K972), 1 Rapid Transit Operator - Report to Forest Park - 0730 hrs

**Equipment:** 8 cars

**Effective:** Sunday, March 24, 2013

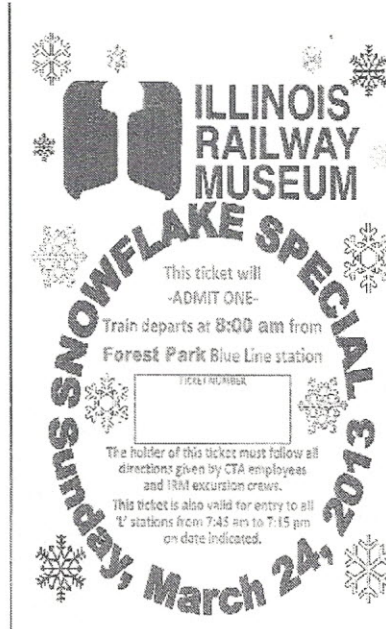
**Schedule:**

Ar	Forest Park	0750	group members board
Lv	Forest Park	0801	follow Run 106
Ar	Morgan Middle	0823	turn from NB to SB
Lv	Morgan Middle	0826	follow Run 205
Lv	Loomis Junction	0827	to Pink Line
Lv	Harrison Junction	0838	follow Run 303
Lv	Paulina Junction	0841	
Lv	Tower 18	0845	Outer Loop
Lv	Tower 12	0851	South Loop Connector, follow Run 704
Ar	Midway	0912	group members alight, rest stop
Lv	Midway	0941	group members board, follow Run 704
Lv	17 <sup>th</sup> Junction	0959	follow Run 1
Lv	Tower 12	1003	Outer Loop
Lv	Tower 18	1009	follow Run 308
Lv	Paulina Junction	1015	to Pink Line
Ar	Harrison Junction	1017	
Lv	Harrison Junction	1019	
Lv	Loomis Junction	1026	follow Run 106 (out of Morgan Middle)
Ar	Jefferson Park	1100	group members alight, rest stop
Lv	Jefferson Park	1105	
Ar	O'Hare	1118	photo stop
Lv	O'Hare	1132	follow Run 116
Ar	Jefferson Park	1146	group members board
Lv	Jefferson Park	1149	
Lv	Loomis Junction	1221	to Pink Line
Ar	Harrison Junction	1225	
Lv	Harrison Junction	1227	follow Run 308
Lv	Paulina Junction	1231	
Lv	Tower 18	1236	Inner Loop

**R376-13**  
**Page 2 of 3**

Lv	Clark/Lake	1238	group members alight, lunch
Lv	Randolph/Wabash	1241	group members alight, lunch
Lv	Adams/Wabash	1243	group members alight, lunch
Lv	Tower 12	1245	
Lv	Roosevelt	1248	group members alight, lunch
Ar	14 <sup>th</sup> Middle	1250	crew lunch
Lv	14 <sup>th</sup> Middle	1400	follow Run 705
Lv	Tower 12	1403	Inner Loop
Lv	Tower 18	1408	Inner Loop
Lv	Clark/Lake	1409	group members board
Lv	Randolph/Wabash	1411	group members board
Lv	Adams/Wabash	1413	group members board
Lv	Tower 12	1414	
Lv	Roosevelt	1417	
Lv	Federal Jct	1420	to Red Line
Lv	Cermak Jct	1423	follow Run 909
Ar	95 <sup>th</sup>	1453	
Ar	98 <sup>th</sup> Yard	1501	Track 1 to post
Lv	95 <sup>th</sup>	1508	follow Run 909
Lv	Clark Jct	1553	via Track 4
Ar	Sheridan	1558	photo stop
Lv	Sheridan	1603	
Ar	Howard	1616	group members alight, rest stop,
Lv	Howard	1620	follow Run 594
Ar	Skokie Yard	1627	
Lv	Skokie Yard	1653	follow Run 593
Ar	Howard	1700	
Lv	Howard	1705	via Track 1
Lv	Clark Jct	1719	follow Run 413
Lv	Tower 18	1736	Outer Loop
Lv	Tower 12	1741	South Loop Connector, follow Run 713
Ar	Midway	1802	group members alight
Lv	Midway	1832	group members board, follow Run 711
Lv	17 <sup>th</sup> Junction	1853	follow Run 8
Lv	Tower 12	1857	Outer Loop
Lv	Tower 18	1906	follow Run 312
Lv	Paulina Junction	1911	to Pink Line
Ar	Harrison Junction	1914	
Lv	Harrison Junction	1916	
Lv	Loomis Junction	1921	follow Run 215
Ar	Morgan Middle	1923	turn from NB to SB
Lv	Morgan Middle	1926	follow Run 120
Ar	Forest Park	1942	group members alight

Station personnel will permit charter train participants free entry to stations between 0745 and 1930 hours. Charter train participants must have in their possession the following "2013 SNOWFLAKE SPECIAL" Illinois Railway Museum ticket.



At the beginning and conclusion of the trip, the charter director, David Harrison, and charter train supervision will check the train for damage and/or debris. Rail Supervisor, K972, will be in charge of train movements. Manager II, Scott Cook [K-571 on appropriate route channel, phone 312-296-1829] is the overall person in charge.

Employees may expect charter train participants to photograph CTA facilities and equipment.

Members of the charter train are to be afforded this privilege provided their actions are consistent with safe and efficient station and train operation.

**SAFETY IS PART OF THE JOB**

**Follow all CTA established rules relating to safe operation, as well as those rules relating to the use of tools, material, equipment and personal safety in the performance of your duties.**

Charge: 11035

Vice President,  
Rail Operations