

LAKES AND HILLS OF WISCONSIN

Via the
North Shore
Line



LAKES AND HILLS OF WISCONSIN

Via the
North Shore
Line

Chicago North Shore & Milwaukee R.R.
Milwaukee Electric Ry. & Light Co.
Milwaukee Northern Ry. Co.

Chicago North Shore & Milwaukee R.R.
Milwaukee Electric Ry. & Light Co.
Milwaukee Northern Ry. Co.

HERE ARE GOOD PLACES TO SPEND A DAY, A WEEK-END, OR A VACATION

Waukesha. The City of Springs, long famed for its waters. A pleasant city on the Fox River a short ride from Milwaukee and within fifteen minutes of Lake Pewaukee. Waukesha is famous for its mud baths and other health resorts. Has good hotels. The Moor Mud Baths attract visitors the year around. Waukesha water is world famous and large numbers of persons come here to drink it directly from the springs.

Waukesha Beach. The best known picnic and amusement park in Wisconsin. Located on the shores of Lake Pewaukee, fifteen minutes' ride on the electric railway from Waukesha and about an hour from Milwaukee. A native grove of elm, oak, linden and other noble trees. Fine spring on the grounds. Here there are many amusement attractions: boating, bathing, motor launches, scenic railway, many other recreation features, dining room and lunch rooms, and children's playgrounds.

Pewaukee Lake. Reached by the Milwaukee Electric Railway at Waukesha Beach, and by the motor coach lines at Pewaukee. An old-time favorite of the takers of fish. Along its shores are many summer homes and resorts where one may find all of the outing features—boating, bathing, fishing, sailing, motor boating and other amusements.

Nagowicka Lake. Deep set among the hills, this old glacial lake is one of the beauties of the "Kettle Range" of hills. On it are many handsome summer homes and summer hotels. At its south end is Lapham's Peak from the top of which is obtained a view of twenty-nine lakes and a beautiful vista of rolling country.

Delafield. On the southwestern end of Nagowicka. Here is located a state fish hatchery for the propagation of bass and other game fish, a series of seven ponds lying along the Bark River. On a prominent hill overlooking the village is the old church built in the fifties, like the inverted hull of a ship. Close by are the beautiful stone buildings of St. John's Military Academy.

Nemahbin—Nashotah Lakes. A chain of four beautiful lakes well set among the Kettle Hills. The electric railway passes between upper and lower Nemahbin where boats may be had for a cruise through the chain. Water channels connect upper Nemahbin and lower Nashotah and a boatway connects lower Nashotah with the upper lake on which is located the Nashotah Mission, one of the beauty spots of the lake region. From lower Nemahbin Lake the Bark River flows into Crooked Lake. A number of summer resorts are located on lower Nemahbin, and cottagers and campers make large use of the lakes.

Silver Lake



City Park, Oconomowoc



Regatta, Oconomowoc Lake

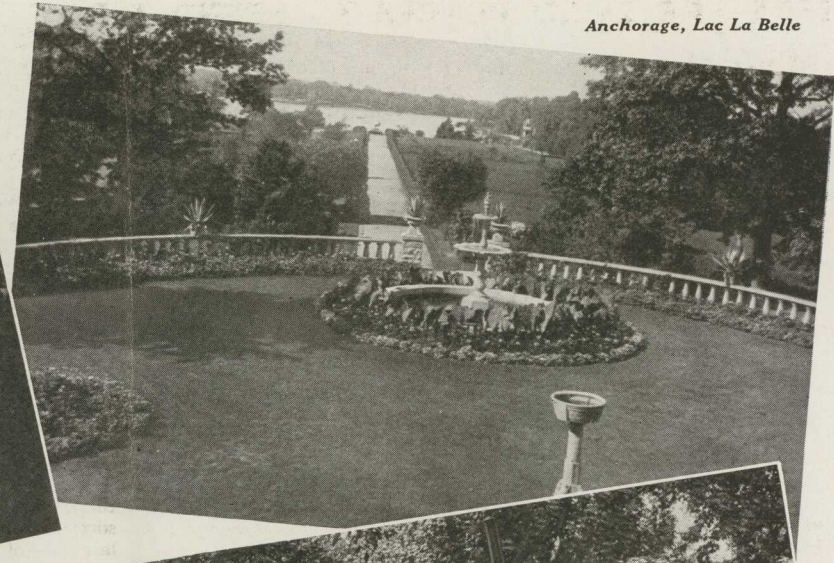


Fowler Lake

Clock Tower, St. John's Military Academy, Delafield



Anchorage, Lac La Belle



Drive at Lac La Belle



At Pewaukee Lake

Silver Lake. This lake is noted as the finest beach of inland Wisconsin. Sloping gently into the clear lake waters the sands of Silver Lake beach attract thousands of bathers each year. With its especial attractiveness to children, because of the gentle slope, the beach is doubly pleasant for parents who wish to have their children enjoy the bathing privileges with the least worry.

Oconomowoc. The summer resort par excellence of southeastern Wisconsin. A beautiful city between three lakes. A large number of Chicago people make this their summer home. Fowler, La Belle and Oconomowoc lakes surround the city and give it great charm. Excellent summer season and all-year hotels. This is also a city of commercial importance, the center of a wealthy dairying district. The great Catholic institution at Spring Bank is located on Oconomowoc Lake. The highways hereabout offer opportunity for walks amid most pleasant surroundings.

Okauchee. A lake of beauty near Oconomowoc, and reached from that city and from Milwaukee by motor coach service. There are many resorts and a large number of summer homes on the lake. Launches from the bus stations carry passengers to all parts of the lake, which is verily a lake of bays and points.

Pine, Beaver, North and Keesus Lakes. These are reached by motor coaches from Milwaukee. The route passes through Hartland and goes on to Nashotah, Okauchee and Oconomowoc. A number of excellent resorts are on these lakes and they have transportation available at the bus stations in Hartland by arrangement.

Elkhart Lake. Situated in the center of a number of small hills this lake is one of the prettiest. The wooded slopes of the hills, with thick growths of evergreen and white pine trees, provide an ever-changing experience for hikes and picnic parties in the woods. Summer hotels and cottages are scattered along the high banks as well as the sloping beaches.

Crystal Lake. This is one of the smaller Wisconsin lakes but nevertheless is very popular with vacation seekers. A dance pavilion where good music is provided throughout the summer season is one of the attractions of Crystal Lake. Picnic groves with special appointments for those who like to spend a day in the open are also provided. There are many cottages on the lake and hotels where meals may be obtained if they are desired.