

# *Seeing Greater Chicago*

*by the*  
**CHICAGO SURFACE LINE**







## The city moves to the country

**E**LECTRICITY builds cities. Without electric elevators, pumps and fans, the tall buildings would be lifeless piles of steel. Without electric cars, city streets could not accommodate the crowds.

But now, having made the modern city, electricity is making the country. Wherever electric lines lead out from the city, you find suburban property values enhanced, suburban life made comfortable, and waste land blossoming into homes.

The automobile helps. The motor bus helps more. But

the trolley and interurban cars are more important still. *Sixteen billion* Americans rode on electric lines last year—145 rides per capita of our entire population!

This is an impressive record for a utility that is still young. The first complete electric railway system in the United States was installed in Richmond, Virginia, in 1888. It was a quaint, almost an experimental car-line. But it introduced a new economy in transportation, a new epoch in the art of making homes.



*General Electric Company builds motors that last a generation in service and controlling devices that make electric transportation one of the safest means of travel in the world.*

# GENERAL ELECTRIC

## SEEING GREATER CHICAGO BY THE CHICAGO SURFACE LINES

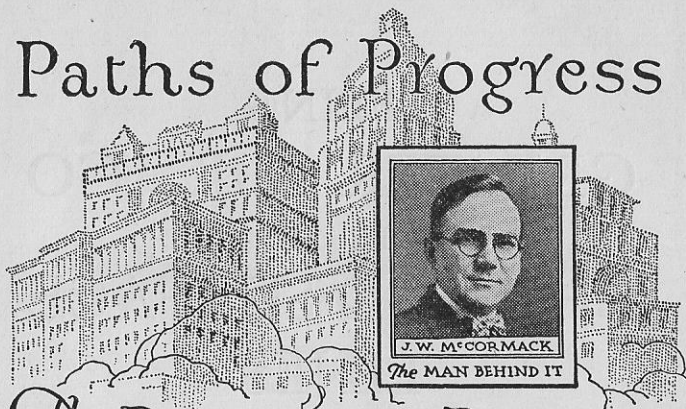


### A SIGHTSEEING AND ROUTE GUIDE



PUBLISHED BY THE  
CHICAGO SURFACE LINES  
231 SOUTH LA SALLE STREET  
1926

# Paths of Progress



## The PERSHING ROAD DEVELOPMENT

On June 9, 1921, General John J. Pershing (Black Jack of the World War) paid a visit to the Pershing Road tract of The Central Mfg. District.

Since that time the development of Pershing Road has been one of the phenomena of Chicago's giant strides forward. The visit of this great leader marked the inception of, and gave impetus to, rapid construction of a highway to link the Forest Preserve to the Lake.

Today Pershing Road is rapidly nearing completion. All along the thoroughfare we have important activities growing larger with time. It will be more than obvious to those who acquire property, fronting or adjacent to this great street, that they will have a share in Chicago's future profits.

The same vision that associated it with other great trends of Chicago progress accounts for the J. W. McCormack Company's presentation of choice property fronting on Pershing Road. The investing public has come to regard its sponsoring as a connotation of Success—prestige won by sound judgment, integrity and safety.

**J. W. McCORMACK CO.**  
111 West Washington Street  
CHICAGO

Write  
for Free  
Booklet

# CHICAGO

WITH a population of 3,000,000, Chicago is the fourth largest city in the world. It covers an area of two hundred square miles and is twenty-six miles long and fifteen miles wide. Its frontage on Lake Michigan is twenty-two miles.

The city had its beginning in the establishment of Fort Dearborn at the mouth of the Chicago River in 1803. When it was incorporated in 1833 it consisted of a settlement of fifteen houses grouped around the fort and covering an area of three-eighths of a square mile. Lots sold as low as \$1.25 each.

Today the assessed valuation of Chicago is more than \$1,000,000,000 and its manufactured products are worth \$6,500,000,000.

The city has some of the most beautiful parks in the world connected by an elaborate boulevard system.

It has the world's largest municipal pier, constructed at a cost of \$5,000,000.

It has the largest livestock market in the world, the Union Stock Yards, occupying an area of five hundred acres with switch yards totalling three hundred miles of tracks.

Developing in accordance with plans which look far into the future, Chicago is rapidly becoming the most beautiful city in America. Millions of dollars are spent in improvements annually.

To the visitor the city is replete with interest. The beautiful parks and extensive bathing beaches, the art and scientific museums, the hundreds of statues and historic spots, the great industries, the well-stocked shops and wonderful department stores, the delightful summer climate and the advantages of Lake Michigan all contribute to the value of Chicago as a vacation city.

Every section of the city can be reached quickly and conveniently by the Chicago Surface Lines, the largest street railway system in the world. More than 1,000 miles of track cover the city with a gridiron service surpassed by no other transportation agency in any large city.

The free transfer system makes it possible to ride thirty-seven miles for one fare and the average ride per fare is more than four miles.

Transfers are issued upon request at the time fares are paid and are good at intersecting point on a crossing, diverging or extension line, for a continuous trip in an onward direction. They are void 15 minutes after the time punched.

In the outlying sections the "skip-stop" system is used. Stopping places for cars are indicated by a white band painted on poles supporting the trolley wires.

For lost articles, call the Company switchboard, Dearborn 8800, giving as nearly as possible the car line and the time. Articles unclaimed in thirty days are returned to the finders.

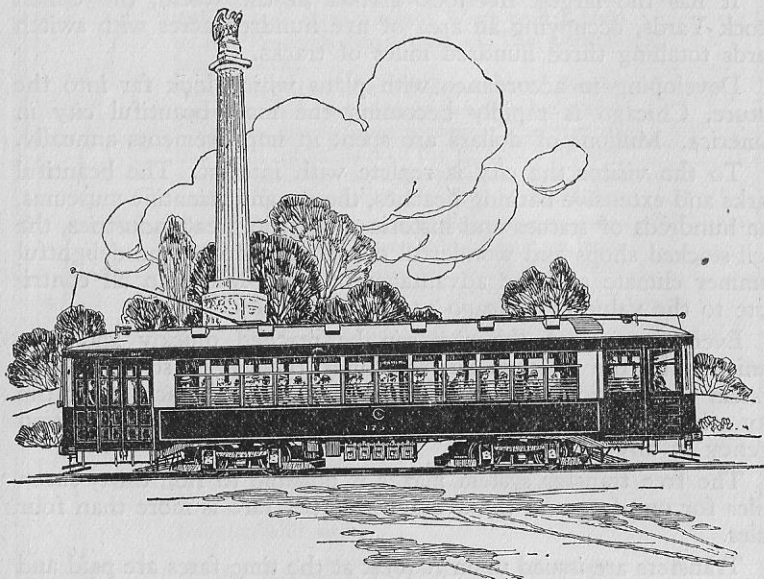


Madison Street is the north and south dividing line of the numbering system of the city and State Street is the east and west dividing line. Eight hundred numbers are assigned to each mile or one hundred to each eighth of a mile except the first two miles south of Madison Street, where there are 1200 for the first mile and 1000 for the second mile.

Points of interest with directions for reaching them given in this book are arranged as nearly as possible under classified headings. The numbers in parentheses refer to the numerals on the map in the back of the book.

All directions given presume starting from the "Loop."

For additional information call the CHICAGO SURFACE LINES, TELEPHONE, DEARBORN 8800.



Illinois Centennial Monument, Logan Square

## WHAT TO SEE IN CHICAGO

EVERY point of interest in the city can be reached conveniently and comfortably by the Chicago Surface Lines. The system not only comprises the largest street railway in the world, but also provides the most liberal transfer privileges. Free transfers are issued for continuous trips as long as the passenger is going in the same general direction.

The principal points of interest, classified under appropriate headings alphabetically arranged, are listed below. Directions for reaching them presume starting from the loop district.

### AMUSEMENT PARKS

**RIVERVIEW PARK (5)**—Belmont and Western Avenues. A large summer amusement park with many attractions and space for picnicking purposes. Dancing in the winter. Take Riverview-Larrabee cars at Dearborn and Randolph Streets, or Clybourn Avenue cars in Wells Street direct to the park. By transfer, north on Western Avenue or west on Belmont Avenue direct to the park.

**WHITE CITY (57)**—63rd Street and South Park Avenue. A large summer amusement park with many attractions. Dancing and roller skating in winter. Take southbound Clark-Wentworth or Through Route No. 22 cars in Clark Street, or State Street cars in State Street, south to 63rd Street and transfer east to park; Cottage Grove Avenue cars in Wabash Avenue south to 63rd Street and transfer west to park.

### BASEBALL PARKS

**CUBS PARK (4)**—Clark and Addison Streets. Home grounds of the Chicago National League baseball team. Take Clark-Wentworth or Through Route No. 22 cars in Clark Street, north to main entrance of park.

**WHITE SOX PARK (42)**—West 35th Street and Shields Avenue. Home grounds of the Chicago American League baseball team. Take Clark-Wentworth or Through Route No. 22 cars in Clark Street, south to 35th Street and Wentworth Avenue. Baseball park one block west.

### BATHING BEACHES

**CLARENDON BEACH (3)**—Lake Michigan, between Montrose and Wilson Avenues. One of Chicago's great attractions, owned and operated by the city. In hot weather more than twenty thousand bathers use this beach daily. Take Broadway or Through Route No. 1 cars in State Street, north to Sunnyside Avenue. Bathing beach two blocks east.

**51st STREET BEACH (49)**—Lake Michigan at 51st Street. Free bathing. Take southbound Cottage Grove-Lake Park Avenue cars in Wabash Avenue to Hyde Park Boulevard. Bathing beach two blocks east.

**75th STREET (RAINBOW) BEACH (59)**—Lake Michigan at 75th Street. Free bathing. Take southbound Cottage Grove-Lake Park Avenue, Through Route No. 4 or No. 5 cars in Wabash Avenue, State Street cars in State Street, Clark-Wentworth or Through Route No. 22 cars in Clark Street, to 75th Street and transfer east to bathing beach.



**79th STREET (ROCKY LEDGE) BEACH (60)**—Lake Michigan at 79th Street. Free bathing, under city supervision for children only. Take southbound Cottage Grove-Lake Park Avenue, Through Route No. 4 or No. 5 cars in Wabash Avenue, State Street cars in State Street, Clark-Wentworth or Through Route No. 22 cars in Clark Street, to 79th Street and transfer east to bathing beach.

**39th STREET BEACH (47)**—Lake Michigan at East Pershing Road. Free bathing; (dressing rooms only, bathing suits not furnished). Take any Cottage Grove Avenue, Through Route No. 1, No. 4 or No. 5 cars in Wabash Avenue south to Pershing Road (39th Street). Bathing beach two blocks east; State Street cars in State Street, Clark-Wentworth or Through Route No. 22 cars in Clark Street, south to Pershing Road and transfer east to Cottage Grove Avenue. Bathing beach two blocks east.

**OTHER PUBLIC BEACHES**—In Lincoln Park at Diversey Boulevard and at Fullerton Avenue, and in Jackson Park, near 57th Street. See under these parks for directions.

## FOREST RESERVES

Cook County has more than 31,000 acres of forest reserves, thousands of acres of which are available to street car riders. The open fields, wooded hills and winding river banks afford wonderful opportunities for recreation, picnics, camping and hiking. Some of the reserves nearest the city and directions for reaching them are given below.

**BEVERLY HILLS OR RYAN WOODS (61)**—On the southwest side of Chicago between Ashland Avenue and Western Avenue from 85th Street to 91st Street. Consists of 183 acres. Take Ashland Avenue cars or transfer from other lines to Ashland Avenue and ride south to 87th Street and walk west four blocks to the reserve.

**BROADVIEW (36)**—South of Maywood in Broadview along the banks of the Desplaines River. Consists of 360 acres. Take Roosevelt Road cars or transfer from other lines to Roosevelt Road and ride west to Austin Avenue. At Austin Avenue take Chicago and West Towns Roosevelt Road surface cars west to the reserve.

**CALDWELL (2)**—On the northwest side of Chicago on the Chicago River from Foster Avenue north to the city limits and beyond. It consists of 930 acres, has a tourist camp and a golf course. Take Milwaukee Avenue cars along Milwaukee Avenue or transfer to Milwaukee Avenue from any car line crossing it, and ride north to Peterson Avenue. Walk east three blocks.

**CALUMET PORTAGE (44)**—In Lyons along the Desplaines River. Consists of 253 acres; has a golf course. Take Ogden Avenue cars or transfer from other lines to Ogden Avenue and ride southwest to 25th Street and Laramie Avenue. At 25th Street and Laramie Avenue take the Chicago and West Towns Berwyn-Lyons surface cars to the reserve.

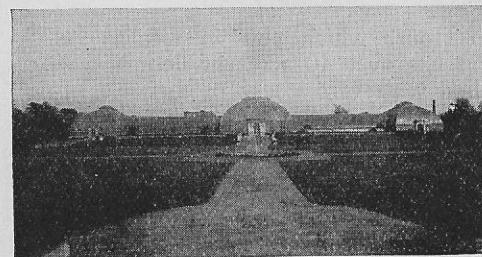
**GEORGE ROGERS CLARK (16)**—In Elmwood Park along the banks of the Desplaines River adjoining Thatcher Woods one mile to the north. Consists of 315 acres and has tourist camp site and golf course. Follow directions for Thatcher Woods.



Ft. Dearborn Massacre Monument,  
Lake Front and 18th Street

**RIVERSIDE WOODS (43)**—In Riverside along the banks of the Desplaines River. Consists of 1,705 acres. Has a tourist camp site. Take 22nd Street cars or transfer from other lines to 22nd Street and ride west to Kenton Avenue. At Kenton Avenue take Chicago and West Towns 22nd Street LaGrange surface cars west to the reserve. An ideal hiking trip would be to take the 22nd Street route out to the Riverside Woods and hike north through Riverside Woods and along the Desplaines River, north through Broadview Reserve which ends at Roosevelt Road. Take Chicago and West Towns line on Roosevelt Road at north end of reserve and make return trip by Roosevelt Road. Hiking distance about three miles.

**STEEL (23)**—In River Forest along the banks of the Desplaines River. Consists of 120 acres. Take Madison Street cars or transfer from other lines to Madison Street cars and ride west to Austin Avenue. At Austin Avenue take the Chicago and West Towns surface cars west to the reserve. An ideal hiking trip would be to take the Madison Street route out to the Steel Reserve and hike north along the Desplaines River through the Steel Reserve, Thatcher Woods and George Rogers Clark Reserve to Fullerton Avenue, then walk east 1½ miles to the Grand Avenue car line for return trip. Hiking distance about 5 miles.



Washington Park Conservatory

State-Lake cars and ride west to Austin Avenue. At Austin Avenue take the Chicago and West Towns Lake Street surface cars west to the reserve.

**WOLF LAKE (63)**—On the southeast side of Chicago between 112th Street and 118th Street and from Avenue F east to the Indiana State line. Consists of 120 acres. Take Ewing-Brandon cars at 92nd and Baltimore Avenue or transfer from other lines to the Ewing-Brandon line and ride south to 115th Street and Ewing Avenue. Reserve is two blocks east.

## GOLF COURSES FOR VISITORS

Golf holds an important place in the life of Chicago. Within a radius of 40 miles of the city there are 108 golf courses. There are free public courses at Jackson, Garfield, Lincoln, Marquette and Columbus Parks. See under PARKS for directions.

## LIBRARIES

**CHICAGO PUBLIC LIBRARY (68)**—Washington Street, Garland Court and Randolph Street. Entrances on Washington and Randolph Streets. The Library contains over 1,000,000 volumes, and the building, including furnishings, cost \$2,000,000. In it is located the Grand Army Memorial Hall with an interesting collection of Grand Army portraits, relics and curios.

**CHILDREN'S SCIENCE LIBRARY**—Lincoln Park. Contains about 500 volumes for children's reading on natural history. Open weekdays from 9 A. M. to 5 P. M. For directions see under LINCOLN PARK.

**JOHN CRERAR LIBRARY (65)**—86 East Randolph Street. Open weekdays from 9 A. M. to 10 P. M. Admission free. This is a scientific reference library containing about 500,000 volumes and 300,000 pamphlets.



MONTGOMERY WARD & COMPANY extends to you a cordial invitation to enjoy a tour through the home of mail order merchandising.

Here you will see one of the seven great mail order houses of Montgomery Ward & Company, which together have over 150 acres of floor space and serve over eight million families.

The Chicago House which you will see in full operation has over 40 acres of floor space and is filled with vast stocks of merchandise for every need of the home, family and farm.

It will be a pleasure to have you watch the efficiency and systematic precision with which orders are received, filled and shipped on time schedules so that practically all of the orders received daily are filled and on the way to our customers within 24 hours after they reach us.

#### HOW TO GET THERE

See figure 15 on the map in this book for instructions on reaching our plant by the Surface Lines or take any northbound Elevated train that stops at Chicago Avenue. Chicago Avenue Surface Lines will bring you to our door.

## Montgomery Ward & Co.

618 West Chicago Ave.  
CHICAGO

**NEWBERRY LIBRARY (14)**—Clark Street and Walton Place. Open daily, except Sundays and legal holidays, from 9 A. M. to 10 P. M. Admission free. The library contains nearly half a million volumes and is noted for its panels depicting LaSalle's march through Illinois, Benedictine Monks at work and the Fort Dearborn Massacre. An interesting museum containing many ancient manuscripts is a feature of the library. Take northbound Clark-Wentworth, or Through Route No. 22 cars in Clark Street, north to Walton Place.

### MANUFACTORIES AND INDUSTRIES

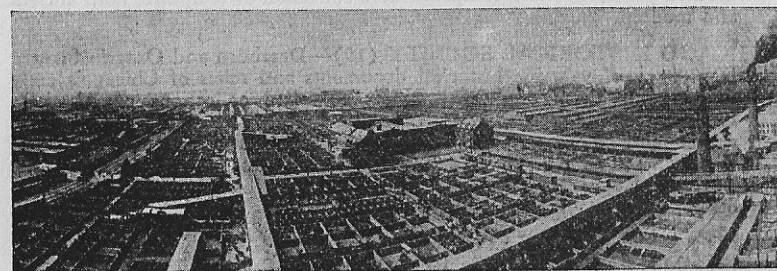
**CENTRAL MANUFACTURING DISTRICT (41)**—Between Ashland Avenue, Morgan, 35th and Pershing Road. This district contains about 250 business concerns, including such well known firms as Westinghouse Electric & Manufacturing Company, Albert E. Pick & Company, William Wrigley, Jr., Company, United States Cold Storage Company and Winchester-Simmons Company. Out of it 100,000 cars of manufactured goods are shipped annually. Take southbound Clark-Wentworth or Halsted Street cars in Clark Street, State Street or Ashland Avenue cars in State Street and transfer on 35th Street.

**FORD MOTOR COMPANY PLANT (64)**—125th Street and Torrence Avenue. Take Cottage Grove Avenue cars in Wabash Avenue, State Street cars in State Street or Clark-Wentworth cars in Clark Street, to 63rd Street and transfer to 63rd Street and Dorchester Avenue, terminal of the South Deering line. South Deering cars leave 63rd Street and Dorchester Avenue going south to 124th Street and Torrence Avenue. Plant one block south.

**INTERNATIONAL HARVESTER WORKS (39)**—26th Street and South Western Avenue. The McCormick Reaper works and Tractor plant are close together and visitors are welcome. Take Blue Island Avenue cars at Dearborn and Adams Streets west to Western Avenue.

**MONTGOMERY WARD & COMPANY (15)**—Chicago Avenue and the river. Visitors are welcome at this large mail order institution on weekdays. Sightseeing trips through plant 9 A. M. to 4 P. M.; Saturday 9 A. M. to 11 A. M. Take Through Route No. 1 or No. 3, State or Broadway cars in State Street, Clark-Wentworth, Halsted Street or Through Route No. 22 cars in Clark Street, or Lincoln Avenue cars at LaSalle and Madison Streets, to Chicago Avenue and transfer west to plant at the river.

**PULLMAN CAR WORKS (62)**—111th Street and Cottage Grove Avenue. Take Cottage Grove Through Route No. 4 cars in Wabash Avenue south to 111th Street and Cottage Grove Avenue, main entrance to plant.



Union Stock Yards



**SEARS ROEBUCK & COMPANY (27)**—Kedzie Avenue and Arthington Street. Visitors are welcome at this large mail order house on weekdays 8:30 A. M., to 5:30 P. M., Saturdays 8:30 A. M., to 9 P. M. Guides furnished for hourly trips through plant 9 A. M., to 4 P. M. Madison, Van Buren or Harrison Street cars west to Kedzie Avenue, transfer south to Arthington Street, main entrance.

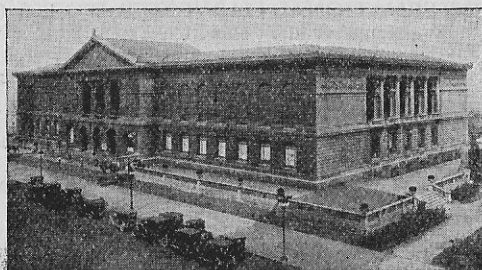
**UNION STOCK YARDS (48)**—Between Pershing Road and 47th Street and Halsted Street and South Marshfield Avenue. The world-famous center of the packing industry. Covers 475 acres. The International Live Stock Exposition Amphitheatre is on the grounds. Take southbound Halsted Street cars in Clark Street, or Wallace-Racine Avenue cars in State Street direct to main entrance at Halsted and Root Streets.

**WESTERN ELECTRIC COMPANY (38)**—22nd Street and South Cicero Avenue. These works supply 90 per cent of the telephone apparatus used in the United States and much of the electrical equipment installed in Europe, South America, Asia and Africa. More than 40,000 employes are engaged in this work and the plant covers 200 acres of land. Take any southbound car in Clark Street or State Street or Indiana Avenue cars in Wabash Avenue south to 22nd Street, and transfer to 22nd-Kenton Avenue. Or take Lake Street, Madison Street, Harrison Street or Roosevelt Road cars west to Cicero Avenue and transfer south on Cicero Avenue to the plant.

## MUSEUMS

**ACADEMY OF SCIENCES (10)**—Lincoln Park at Clark and Center Streets. A noted museum of natural history, open weekdays 9 A. M. to 5 P. M.

and on Sundays 1 P. M. to 5 P. M. Take Broadway or Through Routes No. 1 or No. 3 cars in State Street, Clark-Wentworth or Through Route No. 22 cars in Clark Street, or Lincoln Avenue cars at LaSalle and Madison Streets, direct to Academy at Clark and Center Streets.



Art Institute

**ART INSTITUTE OF CHICAGO (70)**—Grant Park, opposite Adams Street. Open weekdays 9 A. M. to 5:30 P. M. Sundays 12 P. M. to 8 P. M. Free to the public on Wednesdays, Saturdays and Sundays. On other days an admission fee of 25 cents is charged. It ranks among the best art galleries in the country, containing excellent examples of old masters and modern paintings and a comprehensive collection of sculpture, both ancient and modern.

**CHICAGO HISTORICAL SOCIETY (19)**—Dearborn and Ontario Streets. Depository of valuable historical documents and relics of Chicago's early days among them one of the most complete collections of Abraham Lincoln relics. Open daily 9 A. M. to 5 P. M., except Saturday afternoons and Sundays. Free. Take northbound Clark-Wentworth or Through Route No. 22 cars in Clark Street, Broadway, State Street, or Through Route No. 1 or No. 3 cars in State Street, north to Ontario Street, walk one block to Dearborn Street.

**FIELD MUSEUM OF NATURAL HISTORY (30)**—Roosevelt Road and Lake Michigan. Open daily 10 A. M. to 4 P. M., November, December and January, and to 5 P. M., February, March, April, and October, and to 6 P. M. other months. Thursdays, Saturdays and Sundays free; other

days 25 cents. The building covers 11 acres of ground and represents an expenditure of approximately \$7,500,000. Take any southbound car in Wabash Avenue except Broadway to Roosevelt Road, walk east one block to Michigan Avenue, north one-half block to Eleventh Place, east one block to viaduct crossing Illinois Central tracks.

## PARKS

The park system of Chicago includes nearly 5,000 acres of land. There are one hundred and ninety-three small parks and fourteen larger parks, thirty-one ball grounds and twelve bathing beaches. Free public golf courses are located in Jackson, Garfield, Lincoln, Marquette and Columbus parks. The conservatories in Lincoln, Washington and Garfield parks are noted for their beautiful collections of horticultural specimens. The zoological collection in Lincoln Park is one of the finest in the world and in the aquarium in the same park there is a splendid collection of fresh water fish.



Statue of La Salle,  
Lincoln Park

**COLUMBUS PARK (26)**—Harrison Street and Central Avenue. Excellent for swimming, boating, baseball, tennis and golf. Take Harrison-Central cars at Dearborn and Adams Streets direct to park, or Madison-Austin cars to Central Avenue. Two blocks south to the park.

**DOUGLAS PARK (31)**—Between South California and South Albany Avenues and West Roosevelt Road and West 19th Street. It contains one hundred and twenty-eight acres, with a lake covering twenty-six acres. The buildings include a refectory, assembly hall, gymnasium and natatorium. Take Roosevelt Road cars at Dearborn and Adams Streets, or Ogden Avenue cars on Washington Street direct to the park.

**DOUGLAS MONUMENT PARK (46)**—Lake Front and 35th Street. A small park containing the tomb of Stephen A. Douglas. Take Cottage Grove Avenue cars to 35th Street. Park one block east.

**GARFIELD PARK (24)**—Madison Street and Central Park Avenue. It is distinguished because of its beautiful gardens. There are facilities for boating, golf and other sports. Many artistic and notable statues stand in various parts of the park. The conservatory is the largest in the United States. Take Madison Street cars at Madison and Dearborn Streets or on Monroe Street west of Dearborn Street to park entrance.

**GRANT PARK (25)**—On the lake front between East Eleventh Place and Randolph Street. This park contains three hundred and three acres. In it are located the Field Museum, the Stadium and the Art Institute. At the south end of the Institute is the Lorado Taft statue group "The Spirit of the Great Lakes." Other works of art include the equestrian statue of John A. Logan, the statue of Alexander Hamilton and the Buckingham Fountain. One block east to the park from Wabash Avenue car line.





UNION TRUST BUILDING

## Madison at Dearborn—

Deposit your savings regularly in the Union Trust Company—Chicago's most centrally located bank

*A safe, convenient and cordially helpful place for all your banking business*



**UNION TRUST  
COMPANY**  
CHICAGO

SAVINGS DEPARTMENT OPEN TILL 8 P. M. SATURDAYS

**HUMBOLDT PARK (13)**—California Avenue and Division Street. One of the largest of the west side parks, containing pavilions, pergolas, terraces and a lake covering twenty-four acres. Among the statues in the park are those of Lief Erikson and Kosciuszko. Take Division Street cars on Washington Street, direct to park.

**JACKSON PARK (55)**—63rd Street and Stony Island Avenue. The site of the World's Columbian Exposition in 1893. Here are located the Columbus Caravel and Cahokia Court House, the oldest public building in the Mississippi Valley. There are splendid boating facilities, a bathing beach, tennis courts, two public golf courses, flower gardens, and a government life saving station. Take southbound Cottage Grove-Lake Park Avenue, Cottage Grove-55th Street or Through Route No. 1 cars in Wabash Avenue or transfer east on 63rd Street from other north and south car lines.

**LINCOLN PARK (7)**—The park proper extends along the lake from North Avenue to Diversey Parkway, and when extensions are completed it will have a lake frontage of over five miles. The Academy of Sciences, (10) the first museum of natural history and science in the west, is located at the Center Street entrance. The Zoo (12) contains over twenty-five hundred specimens housed in large animal houses. The Aquarium (11) contains a splendid collection of fresh water fish. In the Refectory meals are served in a large dining hall. The conservatory is one of the best in the country. Numerous statues are found along the walks and drives, among them the famous statue of Abraham Lincoln by St. Gaudens. The Fresh Air Sanatorium on the lake, a public bathing beach, a golf course, tennis courts and baseball diamonds are among the other attractions. Take northbound Broadway, Through Route No. 1 or No. 3 cars in State Street, Clark-Wentworth or Through Route No. 22 cars in Clark Street or Lincoln Avenue cars at LaSalle and Madison Streets.

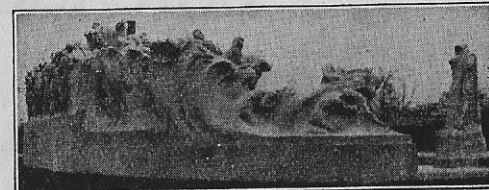


Fountain of the Spirit of the Great Lakes,  
Grant Park

**MARQUETTE PARK (58)**—Kedzie and 67th Street. A public golf course is one of the chief attractions here. Take Madison, Van Buren, Harrison or Roosevelt Road cars to Kedzie Avenue and transfer south to the park (end of the line); or take Cottage Grove Avenue, State Street, Clark-Wentworth or Halsted Street cars south to 67th-69th line, and transfer west to the park (end of line).

**MCKINLEY PARK (45)**—Municipal recreation center and public playground. Take Archer Avenue cars in State Street south to park at Archer and Western Avenues.

**SHERMAN PARK (51)**  
—Municipal recreation center and public playground. Take Wallace-Racine Avenue cars in State Street south to park at Racine Avenue and 53rd Street.



Lorado Taft's Fountain of Time,  
Washington Park



**GOODRICH  
STEAMSHIP  
LINES**

# Goodrich Transit Co.

*All Boats Leave and Arrive*

## MUNICIPAL PIER *Southwest Entrance*

Grand Ave. and Chicago Ave. Cars to  
Pier Entrance

*Day Outing to Milwaukee*

## *Great Ship Christopher Columbus*

Daily 10 A. M.—\$1.50 Week Days and Sundays and Holidays  
Docks: South End Michigan Avenue Bridge

# BLAIR & HAILAND

INCORPORATED

## INSURANCE

## CHICAGO

166 W. Jackson Blvd.

Phone Wab. 3957

**WASHINGTON PARK (52)**—Cottage Grove Avenue and 51st Street. The meadows on which are located numerous baseball diamonds and tennis courts are the pride of the park commissioners controlling the South Park System. The statue of Washington guards the Grand Boulevard entrance. A conservatory, the sunken gardens, boating, croquet, archery, and the Refectory where meals can be obtained are some of the attractions. Lorado Taft's "Fountain of Time," (54) one of the art treasures of the city is located in the southeast corner of the park at the west end of the Midway Plaisance. Take Indiana Avenue-51st Street cars in Wabash Avenue south to 51st Street entrance to park, Cottage Grove-71st Street or Through Routes No. 4 or No. 5 cars in Wabash Avenue south to park.

## PUBLIC BUILDINGS

**CITY AND COUNTY BUILDING (66)**—Between Washington, Randolph, Clark and LaSalle Streets. In this building are the executive offices of both the city and county governments.

**FEDERAL BUILDING (72)**—Between Adams Street and Jackson Boulevard and Clark and Dearborn Streets. In this building are the United States post office and the federal courts and offices.

## RAILROAD DEPOTS AND ELECTRIC TERMINALS

**CHICAGO, AURORA & ELGIN WELLS STREET TERMINAL (74)**—314 South Wells Street. Take any westbound car to Wells Street. Transfer to depot between Jackson Boulevard and Van Buren Street.

**CHICAGO, NORTH SHORE & MILWAUKEE RAILROAD (71)**—Wabash Avenue 4 doors south of Adams Street. Take southbound Wabash Avenue cars to Adams Street.

**CHICAGO & INTERURBAN TRACTION TERMINAL (KANKAKEE) (56)**—63rd and Halsted Streets. Take Halsted Street cars in Clark Street

to terminal at 63rd and Halsted Streets, Clark-Wentworth or Through Route No. 22 cars in Clark Street, State Street cars in State Street, and Cottage Grove-71st Street, or Through Route No. 4 or No. 5 cars in Wabash Avenue south to 63rd Street and transfer west to Halsted Street.

**CHICAGO & JOLIET TERMINAL (50)**—Archer and Cicero Avenues. Take southbound Archer-Cicero Avenue cars in State Street to Cicero and Archer Avenues.

**DEARBORN STATION (77)**—Dearborn and Polk Streets. Used by Atchison, Topeka & Santa Fe, Chicago & Eastern Illinois, Chicago & Western Indiana, Erie, Grand Trunk, Wabash and Monon Railroads. Take any southbound car in Clark Street or State Street to Polk Street.

**GRAND CENTRAL STATION (76)**—Harrison and Wells Streets. Used by Baltimore & Ohio, Soo Line, Chicago Great



Lincoln Statue in Lincoln Park



# A COMPLETE REAL ESTATE SERVICE

**Krenn & Dato's real estate leadership is firmly established. Besides offering some of the best investment properties, this firm is organized and active in every branch of the real estate field. This complete real estate service comprises:**

## Subdivision Sales

The almost unlimited resources of Krenn & Dato have made it possible for the firm to command the very best subdivision properties in and out of Chicago—property strategically located in the paths of greatest development and sure to make money for those who invest in them.

## Sales and Leases

This department is organized to handle the sale and leasing of your property efficiently and to your best advantage.

## Renting

Whatever your housing requirements, this department can find a home for you in any part of the city or suburbs at a reasonable rental; or it will find a tenant for your vacant apartment, store, etc.

## Co-operative Apartments

Krenn & Dato own and offer for

sale some of the finest apartments to be bought on a co-operative purchase plan.

## Construction Department

A complete construction organization building homes and bungalows on a liberal financing plan whereby you may build with a small amount of cash and pay the balance in payments just like rent.

## Bonds

Krenn & Dato issues of first mortgage real estate bonds are the obligation of the Edith Rockefeller McCormick Trust. These bonds offer an unusually sound investment and are being bought by many conservative investors.

## Insurance

A complete department of insurance in all its branches to take care of the needs of the Krenn & Dato organization and its clientele.

**All of these departments are at your service, equipped and ready to handle anything in real estate for you. Without obligation inquire for further information.**

## KRENN & DATO, Inc.

Exclusive Agents for Mrs. Rockefeller McCormick Properties

936 North Michigan Avenue

Phone Superior 7046

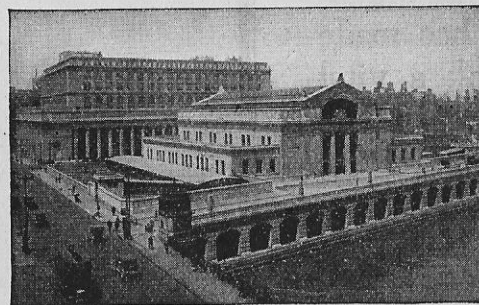


Western, and Pere Marquette Railroads. Take Roosevelt Road cars at Dearborn and Adams Streets; Harrison Street or Clybourn Avenue cars in Harrison Street, west to station. Or any westbound car to Wells Street and transfer south to station at Harrison Street.

**ILLINOIS CENTRAL STATION (29)**—Roosevelt Road and Michigan Avenue. Used by Illinois Central, Big Four, Chesapeake & Ohio and Michigan Central Railroads. Take any southbound car in Wabash Avenue except Broadway to Roosevelt Road, station one block east. Or any southbound car in State Street to Roosevelt Road, station two blocks east.

**LA SALLE STREET STATION (75)**—Van Buren Street, between LaSalle and Sherman Streets. Used by Chicago, Rock Island & Pacific, New York Central, and the Nickel Plate Railroads. Take any southbound car in Clark Street or Wells Street, to Van Buren Street, transfer one block to station.

**NORTH WESTERN STATION (67)**—Madison Street between Canal and Clinton Streets. Passenger terminal of the Chicago & North Western Railroad. Take Milwaukee Avenue cars in Madison Street or Madison cars in Monroe Street, west to the station.



Union Station

## UNION STATION (69)

—Canal Street between Adams Street and Jackson Boulevard. Used by the Chicago, Burlington & Quincy, Chicago & Alton, Chicago, Milwaukee & St. Paul and Pennsylvania Railroads. Take Harrison Street or Blue Island Avenue cars in Adams Street, or Van Buren Street cars in Van Buren Street, west to Canal Street.

## STADIUM AND COLISEUM

**COLISEUM (34)**—1513 South Wabash Avenue. An auditorium seating 14,000 persons. Several national political conventions have been held here. It is used for automobile, electrical and other shows, large conventions and other large gatherings. Take southbound Cottage Grove, Indiana or Through Route No. 1 or No. 3 cars in Wabash Avenue, direct to Coliseum.

**STADIUM—SOLDIERS' FIELD (35)**—At the south end of Grant Park adjoining the Field Museum. With a length of 1,294 feet north and south and a width of 678 feet, the stadium will seat, when fully completed, 160,000 persons. Take southbound Cottage Grove, Indiana or Through Route No. 1 or No. 3 cars in Wabash Avenue to Roosevelt Road. Stadium east of Michigan Boulevard at south end of Grant Park.

## UNIVERSITIES AND COLLEGES

**ARMOUR INSTITUTE OF TECHNOLOGY (40)**—3300 Federal Street. Take Clark-Wentworth, Through Route No. 22 or State Street cars south to 33rd Street.

**DePAUL UNIVERSITY (9)**—1010 Webster Avenue. Take Lincoln Avenue cars at LaSalle and Madison Streets, or Through Route No. 3 cars in State Street, north to Fullerton Avenue and transfer west on Webster-Racine Avenue cars.



**T**HE facilities of this bank are planned to anticipate the needs of Chicago's growth. Vision, supported by a strong organization, has made this bank a vital influence in the city's commercial progress.

*Every Banking Service*

**CENTRAL TRUST**  
COMPANY OF ILLINOIS

125 Monroe Street at La Salle

CHICAGO

Capital and Surplus

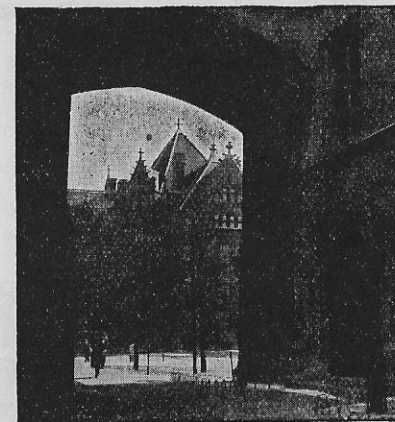
\$9,000,000.00



**LOYOLA UNIVERSITY (1)**—Loyola Avenue and Sheridan Road. Take Broadway-Howard cars in State Street to Sheridan Road and walk north two blocks.

**NORTHWESTERN UNIVERSITY—NEW CAMPUS (18)**—Chicago Avenue and Lake Shore Drive. (To include medical, dental, law and commercial schools.) Take Broadway, State, or Through Route No. 3 cars in State Street north to Chicago Avenue and transfer east. Northwestern University proper is located in Evanston on Sheridan Road and the lake front.

**UNIVERSITY OF CHICAGO (53)**—58th Street and Ellis Avenue. Over 11,000 students attend the university annually. It represents an investment of nearly \$50,000,000. Take Cottage Grove-55th Street or Through Route No. 1 cars in Wabash Avenue to 55th Street and Ellis Avenue. University grounds and buildings two blocks south. Or take Cottage Grove-71st Street, or Through Route No. 4 or No. 5 cars in Wabash Avenue south to 57th Street. University grounds and buildings two blocks east. Guides furnished for visitors.

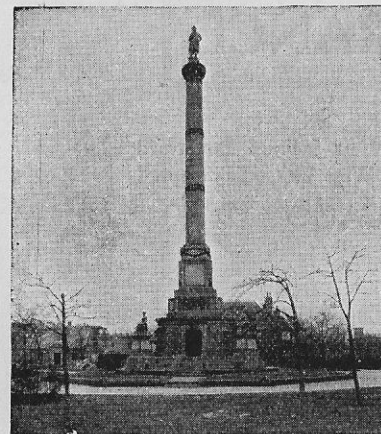


Harper Hall,  
University of Chicago

**ZOO (12) and AQUARIUM (11)**—See under Lincoln Park.

## OTHER POINTS OF INTEREST

**AMERICAN FURNITURE MART (20)**—666 Lake Shore Drive. This building, 16 stories high with more than 30 acres of floor space, is the largest building in the world. Its cost, including the land, was \$10,000,000. It is devoted exclusively to furniture and furniture display. Take any northbound car in Clark Street to Chicago Avenue and transfer east direct to the building. Or take any northbound car in State Street except Through Route No. 16 and transfer east in Chicago Avenue direct to the building.



Douglas Tomb  
Lake Front and 35th Street

**BOARD OF TRADE (73)**—La Salle Street and West Jackson Boulevard. The largest grain mart in the world. Trading hours from 9:30 A. M. to 1:15 P. M., except on Saturdays, when the closing hour is 12 M. A large gallery for visitors is always open during trading hours.

**FORT DEARBORN MASSACRE MONUMENT (37)**—18th Street and the Lake. The monument represents the rescue of Mrs. Helm by Black Partridge. Take Cottage Grove Avenue cars south to 18th Street and Indiana Avenue. Monument one block east.

**GHETTO (32)**—Maxwell between Halsted and Jefferson Streets.



## A Cool Refreshing Lake Trip to Jackson Park

Large Sight Seeing Steel Passenger Ships Florida and Columbia

### DANCE

By Moonlight Every Night

### S.S. FLORIDA BALLROOM BOAT

DANCING FREE

2 Open Air Dance Floors  
From Municipal Pier  
8:45 P. M.

See Chicago's Wonderful  
Water Front

These ships have broad sheltered decks and all conveniences to make travel safe and attractive. A delightful trip along the south shore. In sight of land all the way.

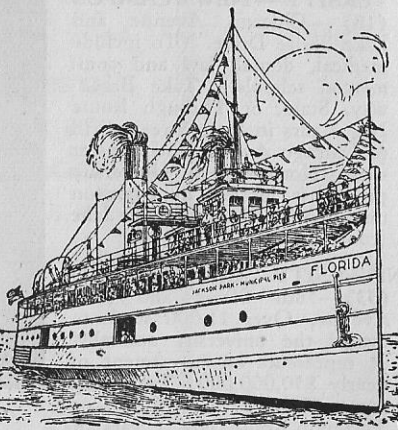
Enjoy the invigorating lake breezes, the beautiful south shore and the wonders of Jackson Park.

Know your own city. See where millions of dollars are being expended on improvements along the south shore of Lake Michigan. Best seen from the decks of our sightseeing ships.

Take any surface line car, transfer on Grand Avenue to East End Municipal Pier.

Boats for charter day or night

Randolph 6800



## MARSH & McLENNAN

### INSURANCE

General Office, 164 West Jackson Boulevard  
City Department, 175 West Jackson Boulevard

### CHICAGO

LONDON, WINNIPEG, CLEVELAND, PITTSBURGH, SEATTLE, DETROIT,  
BUFFALO, COLUMBUS, DULUTH, PHOENIX, INDIANAPOLIS,  
MONTREAL

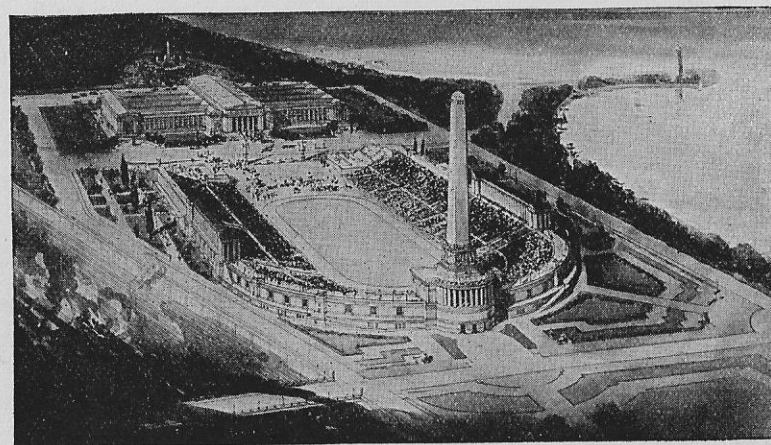
NEW YORK MINNEAPOLIS RICHMOND SAN FRANCISCO

The market is typical of the Russian Jewish customs. It is closed on Saturday, the Jewish Sabbath. Take Roosevelt Road cars at Dearborn and Adams Streets to Jefferson Street and walk south; or Madison Street, Blue Island, Van Buren or Harrison Street cars to Halsted Street and transfer south to Maxwell Street.

**HAYMARKET SQUARE (22)**—Randolph Street between Desplaines and Halsted Streets. This large market for truck garden produce was the site of the anarchist riot in 1886. Take Odgen Avenue or Division Street cars in Washington Street west to Desplaines and Randolph Streets.

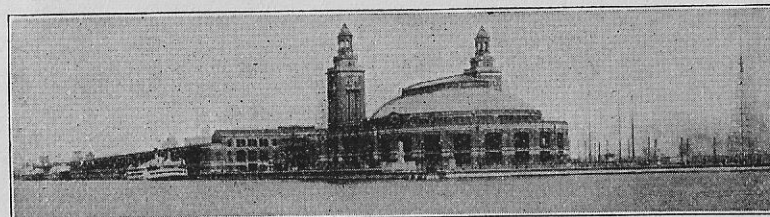
**HULL HOUSE (28)**—Halsted and Polk Streets. Noted social settlement founded by Miss Jane Addams. Open to visitors Saturday mornings and afternoons. Take Madison Street, Van Buren Street, Blue Island Avenue or Harrison Street cars west to Halsted Street and transfer south to entrance at Polk Street.

**ILLINOIS CENTENNIAL MONUMENT (8)**—Logan Square. Erected in 1918 in honor of centennial of admission of Illinois into the union. Take Milwaukee-Gale cars in Madison Street direct to Logan Square.



Soldiers' Field and Field Museum

**MUNICIPAL PIER (21)**—Extending 3,000 feet into the lake at end of Grand Avenue. The pier is justly popular as a recreation center and steamboat landing. It is the best place to enjoy the cooling breezes of the lake. There are open air and enclosed restaurants, public dining rooms for those carrying lunch baskets, children's play grounds, observation towers, art rooms and the board walk. During the season band concerts and dancing. Take northbound Through Route No. 1 or No. 3, Broadway or State Street cars in State Street, Clark-Wentworth, Halsted Street, or Through Route No. 22 cars in Clark Street, or Lincoln Avenue cars at LaSalle and Madison Streets north to Grand Avenue and transfer east to Municipal Pier.



Municipal Pier



**SOUTH WATER MARKET (33)**—14th Place and Racine Avenue. Take Blue Island Avenue cars at Adams and Dearborn Streets and ride west and southwest to Blue Island and Racine Avenues; or take 14th-16th Street cars at Roosevelt Road and Wabash Avenue and ride west to 14th Street and Racine Avenue. Market one-half block south.

**ELKS' MEMORIAL (6)**—Lake View Avenue and Diversey Parkway. Take Clark-Wentworth or Through Route No. 22 or No. 42 cars in Clark Street, Broadway or Through Route No. 1 cars in State Street, north to Clark Street and Diversey Parkway and walk east to Lake View Avenue.

## EVERYWHERE BY SURFACE LINES

THE Chicago Surface Lines not only constitute the largest street car system in the world, but are also remarkable because they provide the longest ride for one fare and the most liberal transfer privileges.

It is possible to ride 37 miles on the Surface Lines on the payment of one fare, and the average ride for one fare is more than 4 miles, the longest of any street railway in the world.

More than 1,000 miles of track reach practically every section of the city. The tracks are built generally on section and half section lines and no place in the city is more than a short walk from street car service.

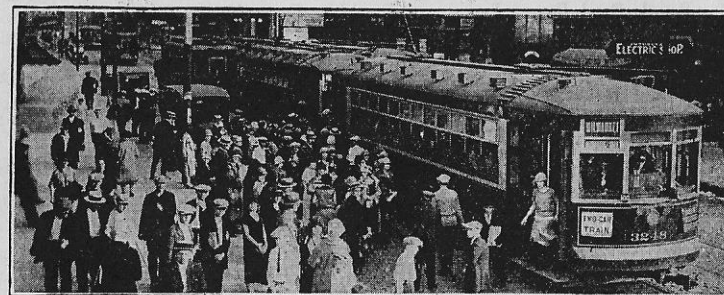
The roadbed and equipment of the Surface Lines is well maintained and is up-to-date in every particular. The equipment includes 3,639 cars. The cars are modern in design and are equipped with approved safety devices.

To operate the system a force of 16,000 men is employed. Of these 12,000 are trainmen.

The properties include two large car shops where cars are kept in good repair. The shops are also equipped for the construction of new cars. There are 16 modern car stations equipped for housing, cleaning and repairing cars.

As an evidence of the growing importance of street cars, it is worthy of note that there were 83,000,000 more rides on the Chicago Surface Lines in 1925 than in 1922. There was a total of 1,517,510,661 rides in 1925.

During 1926 all previous records for street car riding in Chicago have been broken and the increase in riding for the first half of the year was more than the total increase of 1925 over the previous year.



Modern Two-Car Train on Milwaukee Avenue

Checking Accounts  
Foreign Exchange

Travellers Cheques  
Letters of Credit

Organized in 1863, The First National Bank of Chicago has developed a specialized commercial banking organization which assures complete and satisfactory handling of local, national or international financial transactions. Calls and correspondence are invited relative to the application of this service to individual requirements.

# The First National Bank of Chicago

The stock of  
owned by the



both banks is  
same stockholders

# First Trust and Savings Bank

In the selection of investments and the handling of special deposits, savings and reserve accounts, the facilities of the Bond, Real Estate Loan and Banking Departments of the First Trust and Savings Bank are offered, while the Trust Department is especially equipped to act in fiduciary capacities for individuals, firms and corporations.

Frank O. Wetmore, Chairman  
Melvin A. Traylor, President

Investments  
Savings Accounts

Foreign Travel Bureau

Trust Service  
Real Estate Loans

## ROUTES OF CHICAGO SURFACE LINES

THE routes of the various lines of the Chicago Surface Lines system are given in detail below. These route guides, used in connection with the map of the city in the back of the book, enable one to ascertain the street intersections at which passengers may board cars to reach any desired destination. The night car schedules also will be helpful to those desiring street car service between 1 and 5 a. m.

**ARCHER AVENUE-SOUTH CICERO AVENUE**—From South Cicero Avenue (4800 west) and Archer Avenue (5200 south) northeast and north via Archer Avenue to State Street to Polk Street to Dearborn Street to Lake and State Streets. Returning south on State Street to Archer Avenue to Cicero Avenue (starting point).  
Northbound destination sign—**Archer-Downtown**.  
Southbound destination sign—**Archer-Cicero**.

**NIGHT CAR SCHEDULE:** Lake and State Streets to 38th Street and Archer Avenue (south and west)—1:12 A. M. to 5 A. M., 15 minute service. All these cars go through to south terminals.  
Alternate to Cicero-Archer loop and 38th Street and Central Park Avenue; Cicero-Archer loop to Lake and State Streets (east and west)—1:21 A. M. to 5 A. M., 30 minute service.

**ARCHER AVENUE-38TH STREET**—From South Central Park Avenue (3600 west) and 38th Street (3800 south) east and northeast via 38th Street to Archer Avenue to State Street to Polk Street to Dearborn Street to Lake Street to State Street, south on State Street to Archer Avenue, thence over incoming route to starting point.  
Northbound destination sign—**Archer-Downtown**.  
Southbound destination sign—**38-Central Park**.

**NIGHT CAR SCHEDULE:** 38th Street and Central Park Avenue to Lake and State Streets (east and west)—1:15 A. M. to 5 A. M., 30 minute service.

**ARGO**—From Archer Avenue (5200 south) and South Cicero Avenue (4800 west) south and west via South Cicero Avenue to West 63rd Street to South Central Avenue to West 63rd Place to Archer Avenue, (Argo).  
Northbound destination sign—**Cicero-Archer**.  
Southbound destination sign—**Argo**.

**NIGHT CAR SCHEDULE:** Last car leaves Argo (east and northbound) at 12:30 A. M.; last car leaves Cicero-Archer loop (south and westbound) at 12:00 A. M.

**ARMITAGE AVENUE-CENTER STREET**—From Grand Avenue (5100 west) and Armitage Avenue (2000 north) east on Armitage Avenue to North Paulina Street to Cortland Street to North Racine Street to Center Street to North Clark Street (230 west at 1960 north).  
Eastbound destination sign—**Center-Clark**.  
Westbound destination sign—**Armitage-Grand**.

**NIGHT CAR SCHEDULE:** Grand Avenue to Ashland Avenue (eastbound or westbound)—1:09 A. M. to 5:00 A. M., 15 minute service.



**ASHLAND AVENUE**—Through Route No. 9—From West 69th Street (6900 south) and South Ashland Avenue (1600 west) north on South Ashland Avenue to West Roosevelt Road to South Paulina Street to North Paulina Street to West Lake Street to North Ashland Avenue to Cortland Street to Southport Avenue to North Clark Street (4100 north at 1400 west). Returning south over incoming route.

Northbound destination sign—**Southport-Clark**.

Southbound destination sign—**Ashland-69**.

Short line cars on this route stop at Cortland and Wood Streets, northbound.

**NIGHT CAR SCHEDULE:** 69th and Ashland to Clybourn-Southport—1:00 A. M. to 4:45 A. M., 15 minute service. Every second car goes through to 95th Street and Ashland Avenue on the south side and Clark Street and Ashland Avenue on the north side, giving 30 minute service on these outer sections.

**ASHLAND-DOWN TOWN**—From West 95th Street (9500 south) and South Ashland Avenue (1600 west) north and northeast via South Ashland Avenue to Archer Avenue to South State Street to Polk Street to Dearborn Street to Lake Street to State Street. Returning south on South State Street to Archer Avenue, thence over incoming route to starting point.

Northbound destination sign—**Ashland-Downtown**.

Southbound destination sign—**Ashland-95**.

Short line cars on this route stop at 69th Street and 79th Street, southbound.

**ASHLAND AVENUE (North)**—From North Ashland Avenue (1600 west) and Irving Park Boulevard (4000 north) south via Ashland Avenue to Clybourn Avenue at Fullerton Avenue (1600 west to 2400 north).

Northbound destination sign—**Ashland-Irving Park**.

Southbound destination sign—**Ashland-Fullerton**.

**NIGHT CAR SCHEDULE:** Southbound, last car leaves Irving Park Boulevard at 12:50 A. M.; northbound, last car leaves Clybourn Avenue at 1:03 A. M.

**BELMONT AVENUE**—From North Central Avenue (5600 west) and Belmont Avenue (3200 north) east to North Halsted Street (800 west at 3200 north).

Eastbound destination sign—**Belmont-Halsted**.

Westbound destination sign—**Belmont-Central**.

Short line cars on this line stop at Cicero Avenue, westbound.

**NIGHT CAR SCHEDULE:** Eastbound, 1:00 A. M. to 4:30 A. M., 30 minute service; westbound, 1:30 A. M. to 4:30 A. M., 30 minute service.

**BLUE ISLAND AVENUE**—From West 26th Street (2600 south) and South Kenton Avenue (4600 west) east and northeast via West 26th Street to Blue Island Avenue to West Harrison Street to South Clinton Street to West Monroe Street to South Dearborn Street to West Adams Street; westbound on West Adams Street to Clinton and then over incoming route.

Eastbound destination sign—**Blue Island-Downtown**.

Westbound destination sign—**26-Kenton**.

**NIGHT CAR SCHEDULE:** Southbound and westbound, 12:51 A. M. to 1:44 A. M., 25 to 28 minute service; southbound and westbound, 1:44 A. M. to 4:44 A. M., 30 minute service; eastbound and northbound, 1:00 A. M. to 4:30 A. M., 30 minute service.

**BROADWAY\***—From North Clark Street (1600 west) and Devon Avenue (6400 north) south and southeast via Devon Avenue to Broadway to North Clark Street to Division Street to North State Street to East Lake Street to North Wabash Avenue to South Wabash Avenue to East Harrison Street to South State Street to North State Street to Division Street and then over incoming route.

\*See Cottage Grove-Broadway, Through Route No. 1.

Northbound destination sign—**Broadway-Devon**.

Southbound destination sign—**Wabash-Harrison**.

Short line cars on this route stop at Ardmore Avenue.

**NIGHT CAR SCHEDULE:** Northbound, 12:56 A. M. to 2:14 A. M., 8 to 15 minute service; northbound, 2:14 A. M. to 5:14 A. M., 30 minute service; southbound, 1:03 A. M. to 1:20 A. M., 17 minute service; southbound, 1:20 A. M. to 4:20 A. M., 30 minute service.

**CHICAGO AVENUE**—From North Austin Boulevard (6000 west) and West Chicago (800 north) east and southeast via West Chicago Avenue to East Chicago Avenue to Lake Shore Drive and East Grand Avenue to Municipal Pier (530 north at 500 east).

Eastbound destination sign—**Municipal Pier**.

Westbound destination sign—**Chicago-Austin**.

Short line cars on this route stop at Lake Shore Drive, eastbound, and at Crawford Avenue and Cicero Avenue, westbound.

**NIGHT CAR SCHEDULE:** Eastbound, 1:06 A. M. to 4:36 A. M., 15 minute service; westbound, 1:05 A. M. to 1:50 A. M., 8 minute to 13 minute service; westbound, 1:50 A. M. to 4:50 A. M., 15 minute service.

**CICERO AVENUE**—From West 25th Street (2500 south) and South Cicero Avenue (4800 west) north via South Cicero Avenue and North Cicero Avenue to Montrose Avenue (4400 north).

Northbound destination sign—**Cicero-Montrose**.

Southbound destination sign—**Cicero-25**.

**NIGHT CAR SCHEDULE:** Northbound, 1:10 A. M. to 1:30 A. M., 20 minute service; northbound, 1:30 A. M. to 4:30 A. M., 30 minute service; southbound, 12:50 A. M. to 4:30 A. M., 30 minute service.

**CLARK-WENTWORTH**—Through Route No. 22, from West 81st Street (8100 south) and South Halsted Street (800 west) northeast and north via 81st Street to Vincennes Avenue to Wentworth to 22nd Street to South Clark Street to North Clark and Howard Streets (7600 north at 1800 west). Returning same route.

Northbound destination sign—**Clark-Howard**.

Southbound destination sign—**81-Halsted**.

Short line cars on this route stop at Devon Avenue, northbound, and at 63rd Street and Wentworth Avenue, and 80th Street and Vincennes Avenue, southbound.

**NIGHT CAR SCHEDULE:** 81st and Halsted Streets to Chicago Avenue and Wells Street—Northbound, 1:00 A. M. to 4:45 A. M., 15 minute service; southbound, 1:18 A. M. to 4:18 A. M., 15 minute service.

Howard and Clark Streets to Madison and Clark Streets\*—Southbound, 1:05 A. M. to 4:05 A. M., 30 minute service; northbound, 1:35 A. M. to 4:35 A. M., 30 minute service.

\*West on Madison Street to LaSalle Street, north on LaSalle Street to Randolph Street, east on Randolph Street to Clark Street and north on Clark Street to Howard Street.

**CLYBOURN AVENUE**—From Belmont Avenue (3200 north) and North Western Avenue (2400 west) southeast and east via Clybourn Avenue to West Division Street to North Wells Street to South Wells Street to Harrison Street to State Street (600 south at 1 west).

Northbound destination sign—**Clybourn-Belmont**.

Southbound destination sign—**Harrison-State**.

**NIGHT CAR SCHEDULE:** Northbound, 1:21 A. M. to 5:06 A. M., 25 minute service; southbound, 1:10 A. M. to 4:30 A. M., 25 minute service.

**COTTAGE GROVE AVENUE-BROADWAY**—Through Route No. 1—From Lake Park Avenue (1600 east) and East 55th Street (5500 south) west and north via 55th Street to Cottage Grove Avenue to Indiana Avenue to 18th Street to South State Street to North State Street

# H. W. ELMORE & CO.

## REAL ESTATE INVESTMENTS

348 National Life Bldg.  
29 So. La Salle St.  
Chicago

Telephone State 4640

All Departments

BUILDING

BROKERAGE

SUBDIVISIONS

BONDS

MORTGAGES

For  
Branch Offices  
In Chicago and Suburbs  
See Telephone Directory

MEMBER OF  
Chicago Real Estate Board  
Cook County Real Estate Board The Chicago Ass'n of Commerce

### Your Bank Is Our Reference

to Division Street to North Clark Street to Broadway to Devon Avenue to North Clark Street to Howard Street (7600 north at 1800 west). Returning by same route to Lake and State Streets to Wabash Avenue, south on Wabash Avenue to 18th Street, thence south over incoming route.

Northbound destination sign—**Broadway-Howard.**

Southbound destination sign—**Lake Park-55.**

**NIGHT CAR SCHEDULE:** 55th Street and Cottage Grove Avenue to 64th Street and Stony Island Avenue—Eastbound, 1:03 A. M. to 4:46 A. M., 15 minute service; south and westbound, 1:30 A. M. to 4:30 A. M., 15 minute service.

Last Through Route No. 1 car leaves 56th Street and Park Avenue at 11:54 P. M.; last car leaves Howard and Clark Streets at 11:55 P. M.

**COTTAGE GROVE AVENUE-PULLMAN—Through Route No. 4—**From East 115th Street (11500 south) and Cottage Grove Avenue (100 east) north via Cottage Grove Avenue to Indiana Avenue to 18th Street to Wabash Avenue to Washington Street to Garland Court to Randolph Street to Wabash Avenue. Returning south over incoming route.

Northbound destination sign—**Cottage-Downtown.**

Southbound destination sign—**Cottage-115.**

**NIGHT CAR SCHEDULE:** Randolph Street and Wabash Avenue to 71st Street and Cottage Grove Avenue—Southbound, 1:07 A. M. to 1:40 A. M., 10½ minute service; southbound, 1:40 A. M. to 4:55 A. M., 15 minute service.

All these cars go through to south terminals with alternate cars going to 115th Street and Cottage Grove Avenue and 93rd Street and Baltimore Avenue.

Northbound from 115th Street and Cottage Grove Avenue at 1:24 A. M. to 4:24 A. M., 30 minute service; northbound from 93rd Street and Baltimore Avenue at 1:17 A. M. to 4:17 A. M., 30 minute service.

**COTTAGE GROVE AVENUE-SOUTH CHICAGO-GRAND CROSSING—Through Route No. 5—**From East 93rd Street (9300 south) and South Chicago Avenue (3000 east) northwest and north via South Chicago Avenue to Cottage Grove Avenue to Indiana Avenue to 18th Street to Wabash Avenue to Washington Street to Garland Court to Randolph Street to Wabash Avenue. Returning south over incoming route.

Northbound destination sign—**Cottage-Downtown.**

Southbound destination sign—**So. Chicago-92.**

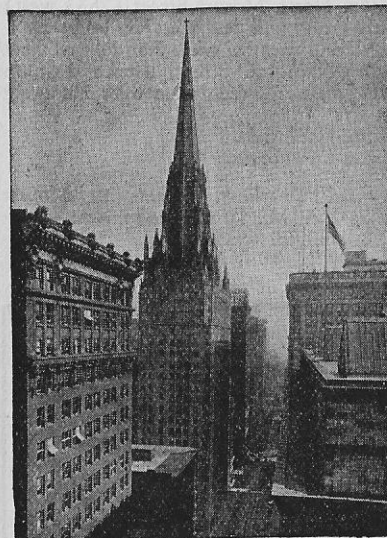
**CRAWFORD AVENUE—**From West 31st Street (3100 south) and South Kostner Avenue (4400 west) east and north via West 31st Street to South Crawford Avenue to North Crawford and Bryn Mawr Avenues (4000 west at 5600 north).

Northbound destination sign—**Crawford-Bryn Mawr.**

Southbound destination sign—**31-Kostner.**

Short line cars on this route stop at Elston Avenue, northbound.

**NIGHT CAR SCHEDULE:** Southbound, 1:00 A. M. to 4:30 A. M., 30 minute service; northbound, 1:00 A. M. to 4:30 A. M., 30 minute service.



Chicago Temple, Clark and Washington Streets



**DEVON AVENUE**—From North Kedzie Avenue (3200 west) and Devon Avenue (6400 north) east to North Clark Street (6400 north at 1600 west).

Eastbound destination sign—**Devon-Clark**.

Westbound destination sign—**Devon-Kedzie**.

**NIGHT CAR SCHEDULE:** Last car leaves Kedzie Avenue at 1:19 A. M.; last car leaves Clark Street at 1:04 A. M.

**DIVERSEY AVENUE**—From Diversey Avenue (2800 north) and Kimball-Milwaukee Avenue (3400 west) west on Diversey Avenue to Crawford Avenue (2800 north at 4000 west).

Eastbound destination sign—**Diversey-Milwaukee**.

Westbound destination sign—**Diversey-Crawford**.

**NIGHT CAR SCHEDULE:** Last car leaves Milwaukee Avenue at 12:48 A. M.; last car leaves Crawford Avenue at 12:42 A. M.

**DIVISION STREET (Downtown)**—From North Mozart Street (2833 west) and West Division Street (1200 north) east and southeast via West Division Street to Milwaukee Avenue to Desplaines to West Randolph Street to North Dearborn Street to West Washington Street, thence west on West Washington Street to North Desplaines Street, then over incoming route.

Northbound destination sign—**Division-California**.

Southbound destination sign—**Division-Downtown**.

**NIGHT CAR SCHEDULE:** Washington and Dearborn Streets to Mozart Street—Northbound, 1:02 A. M. to 5:02 A. M., 30 minute service; southbound, 1:05 A. M. to 4:35 A. M., 30 minute service.

## A Bank You'll Like



This is an old bank, as it was established in 1879. It is a growing bank and each year has shown an increase in the number of patrons and the total of deposits. It is a progressive bank, always keeping up with and even ahead of the times. It is a friendly bank where the smallest depositor can have access to the biggest officer if need be. It is a bank of just the right size, large enough to serve you, not too big to know you.



## State Bank of Chicago

La Salle and Washington Streets

Resources More Than  
\$66,000,000

**DIVISION STREET-WELLS STREET**—From North Mozart Street (2833 west) and West Division Street (1200 north) east on West Division Street to North Wells Street (200 west at 1200 north).

Eastbound destination sign—**Division-Wells**.

Westbound destination sign—**Division-California**.

**NIGHT CAR SCHEDULE:** Division and Wells Streets to Mozart Street, last car leaves Division and Wells Streets at 12:28 A. M.; last car leaves Mozart Street at 12:25 A. M.

**DIVISION STREET-AUSTIN AVENUE**—From North Austin Avenue (6000 west) and West Division Street (1200 north) east on West Division Street to West Grand Avenue (1200 north at 3638 west).

Eastbound destination sign—**Division-Grand**.

Westbound destination sign—**Division-Austin**.

**NIGHT CAR SCHEDULE:** Grand Avenue to Austin Avenue—Last car leaves Grand Avenue at 1:10 A. M.; last car leaves Austin Avenue at 1:10 A. M.

**ELSTON AVENUE**—From Lawrence Avenue (4800 north) and Kenneth Avenue (4500 west) southeast and east via Elston Avenue to Milwaukee Avenue to West Lake Street to North Dearborn Street to West Randolph Street, west on West Randolph Street to North Clinton Street to Milwaukee Avenue and then over incoming route.

Northbound destination sign—**Elston-Lawrence**.

Southbound destination sign—**Elston-Downtown**.

**NIGHT CAR SCHEDULE:** Northbound, 1:13 A. M. to 4:43 A. M., 30 minute service; southbound, 1:00 A. M. to 4:30 A. M., 30 minute service.

**EWING-BRANDON**—From East 92nd Street (9200 south) and Baltimore Avenue (3100 east) south and east via Baltimore Avenue to South Chicago Avenue to East 95th Street to Ewing Avenue to East 118th Street to Burley Avenue to Brandon Avenue to Brainard Avenue (Hegewisch) (3200 east at 13500 south).

Northbound destination sign—**92-Baltimore**.

Southbound destination sign—**Brandon-Brainard**.

**NIGHT CAR SCHEDULE:** Last car leaves Brandon and Brainard Avenues at 12:40 A. M.; last car leaves 92nd Street and Baltimore Avenue at 12:05 A. M.

**FULLERTON AVENUE**—From North Long Avenue (5400 west) and Fullerton Avenue (2400 north) east on Fullerton Avenue to North Halsted Street at Lincoln Avenue (800 west at 2400 north).

Eastbound destination sign—**Fullerton-Halsted**.

Westbound destination sign—**Fullerton-Long**.

Short line cars on this route stop at Cicero Avenue, westbound.

**NIGHT CAR SCHEDULE:** Eastbound, 1:04 A. M. to 1:43 A. M., 8 to 24 minute service; eastbound, 1:43 A. M. to 4:43 A. M., 30 minute service; westbound, 1:13 A. M. to 4:13 A. M., 30 minute service.

**FULTON-21st STREET**—From West 21st Street (2100 south) and Marshall Boulevard (2900 west) east, north and west via West 21st Street, to South Halsted Street to Canalport Avenue to South Canal Street to West Harrison Street, to Clinton St. to West Monroe Street to South Morgan Street to Fulton Street to North Western Avenue (2400 west at 300 north).

Eastbound destination sign—**Fulton-Western**.

Westbound destination sign—**21-Marshall**.

**NIGHT CAR SCHEDULE:** Last car leaves 21st Street and Marshall Boulevard at 11:30 P. M.; last car leaves Fulton Street and Western Avenue at 11:11 P. M.

**GRAND AVENUE**—From West Grand Avenue (2400 north) and North Harlem Avenue (7200 west) southeast and east via West Grand Avenue to East Grand Avenue and Municipal Pier (530 north at 500 east).  
Eastbound destination sign—**Municipal Pier**.  
Westbound destination sign—**Grand-Harlem**.  
Short line cars on this route stop at Austin Avenue, westbound.

**NIGHT CAR SCHEDULE:** Lake Shore Drive to Harlem Avenue—Eastbound 1:00 A. M. to 5:00 A. M., 30 minute service; westbound, 1:00 A. M. to 5:00 A. M., 30 minute service.

**HALSTED STREET-DOWN TOWN**—Through Route No. 42—From 111th Street (11100 south) and South Sacramento Avenue (3000 west) east, north and northeast via 111th Street and Monterey Avenue to Vincennes Avenue to Summit Avenue to South Halsted Street to Archer Avenue to South Clark Street to North Clark Street to North Halsted Street to Waveland Avenue and Broadway (3700 north at 800 west). Returning south on Broadway to North Clark Street, thence over incoming route to starting point.  
Northbound destination sign—**Halsted-Waveland**.  
Southbound destination sign—**111-Sacramento**.  
Short line cars on this route stop at Clark Street and Chicago Avenue, northbound, and at 79th Street, southbound. Cars marked No. 13 run from 63rd Street to Clark Street.

**NIGHT CAR SCHEDULE:** 79th and Halsted Streets to 111th Street and Sacramento Avenue—Northbound, 1:12 A. M. to 3:42 A. M., 30 minute service; southbound, 1:12 A. M. to 3:42 A. M., 30 minute service. 79th and Halsted Streets to Chicago Avenue and Wells Street—Northbound, 1:08 A. M. to 4:23 A. M., 15 minute service; southbound, 1:08 A. M. to 4:23 A. M., 15 minute service.

**HALSTED STREET**—Through Route No. 8—From South Halsted Street (800 west) and West 79th Street (7900 south) north to North Halsted Street, Grace Street and Broadway (3800 north at 800 west).  
Northbound destination sign—**Halsted-Broadway**.  
Southbound destination sign—**Halsted-79**.

**HALSTED STREET-26th STREET**—Through Route No. 18—From 26th Street (2600 south) and South Halsted Street (800 west) north on South Halsted Street to North Halsted Street to Broadway and Grace Street (3800 north at 800 west).  
Northbound destination sign—**Halsted-Broadway**.  
Southbound destination sign—**Halsted-26**.

**NIGHT CAR SCHEDULE:** 26th and Halsted Streets to Halsted Street and Broadway—Northbound, 1:14 A. M. to 1:53 A. M., 11 to 16 minute service; northbound, 1:53 A. M. to 4:53 A. M., 22 minute service; southbound, 1:08 A. M. to 4:26 A. M., 22 minute service.

## Moore, Case, Lyman & Hubbard INSURANCE

175  
West  
Jackson  
Blvd.



Phone  
Wabash  
0400

**SOUTH HALSTED STREET EXTENSION**—From 111th Street (11100 south) and Vincennes Avenue (1665 west) southwest to 119th Street.  
Northbound destination sign—**111-Vincennes**.  
Southbound destination sign—**119-Vincennes**.

**HAMMOND, INDIANA**—From East 63rd Street (6300 south) and South Park Avenue (400 east) south and southeast via South Park Avenue to South Chicago Avenue to East 92nd Street to Ewing Avenue to Indianapolis Avenue (State Line), thence to Hammond, Ind.  
Northbound destination sign—**South Park-63**.  
Southbound destination sign—**Hammond**.

**NIGHT CAR SCHEDULE:** Last car leaves 63rd Street and South Park Avenue at 12:00 midnight; last car leaves Hammond at 11:28 P. M.; last car leaves Hammond at 12:00 midnight to 92nd Street and Commercial Avenue.

**HARRISON-ADAMS STREET**—From South Central Avenue (5600 west) and West Harrison Street (600 south) east via Harrison Street to Racine Avenue to Adams Street to Clinton Street to West Monroe Street to



Eugene Field Memorial in Lincoln Park

South Dearborn Street to West Adams Street and westbound on Adams Street over incoming route.

Eastbound destination sign — **Adams-Downtown**.

Westbound destination sign—**Harrison-Central**.

Short line cars on this route stop at Cicero Avenue, westbound.

**NIGHT CAR SCHEDULE:** Monroe and Dearborn Streets to Central Avenue —Last car leaves Monroe

and Dearborn Streets at 1:37 A. M.; last car leaves Central Avenue at 12:59 A. M.

**HARRISON STREET**—From South Central Avenue (5600 west) and West Harrison St. (600 south) via West Harrison Street to South Clinton Street to West Van Buren Street to South Dearborn Street to West Harrison Street and westbound on Harrison Street over incoming route.  
Eastbound destination sign—**Van Buren-Dearborn**.  
Westbound destination sign—**Harrison-Central**.  
Short line cars on this route stop at Cicero Avenue, westbound.

**NIGHT CAR SCHEDULE:** Van Buren and Dearborn Streets to Central Avenue—Westbound, 1:05 A. M. to 2:07½ A. M., 18 to 23 minute service; westbound, 2:07½ A. M. to 4:57 A. M., 30 minute service; eastbound 1:09½ A. M. to 4:39 A. M., 30 minute service.

**INDIANA AVENUE-51st STREET**—From East 51st Street (5100 south) and Grand Boulevard (400 east) west and north via East 51st Street to Indiana Avenue to 22nd Street to Wabash Avenue to Washington Street to Garland Court to Randolph Street to Wabash Avenue. Returning south over incoming route.  
Northbound destination sign—**Indiana-Downtown**.  
Southbound destination sign—**51-South Park**.

## Rockwell F. Clancy Company Advertising

FOURTEEN WEST WASHINGTON STREET  
CHICAGO



**NIGHT CAR SCHEDULE:** Randolph Street and Wabash Avenue to 51st Street and South Park Avenue—Southbound, 1:03 A. M. to 1:32 A. M., 11 to 18 minute service; southbound, 1:32 A. M. to 5:32 A. M., 15 minute service; northbound, 1:10 A. M. to 4:25 A. M., 15 minute service.

**INDIANA-LINCOLN AVENUE—Through Route No. 3—**From Illinois Central R. R. (1200 east) and East 47th Street (4700 south) west, north and northwest via East 47th Street to Indiana Avenue to 18th Street to South State Street to North State Street to Division Street to North Clark Street to Center Street to Lincoln Avenue to Berwyn Avenue (5300 north at 2500 west). Returning over same route to Lake and State Streets to Wabash Avenue to 22nd Street to Indiana Avenue, thence south over incoming route.  
Northbound destination sign—**Lincoln-Berwyn.**  
Southbound destination sign—**47-Lake Park.**

**NIGHT CAR SCHEDULE:** Northbound, last car leaves 47th Street and Lake Park at 12:00 midnight; southbound, last car leaves Lincoln Avenue and Berwyn Street at 12:10 A. M.

**INDIANA AVENUE-43rd STREET—**From Illinois Central R. R. (1200 east) and East 43rd Street (4300 south) west and north via 43rd Street to Indiana Avenue to 22nd Street to Wabash Avenue to Washington Street to Garland Court to Randolph Street to Wabash Avenue. Returning south over incoming route.  
Northbound destination sign—**Indiana-Downtown.**  
Southbound destination sign—**43-Oakenwald.**

**NIGHT CAR SCHEDULE:** Northbound, last car leaves 43rd Street and Oak-  
enwald Avenue at 9:43 P. M.; southbound, last car leaves Randolph Street and Wabash Avenue at 10:16 P. M.

**IRVING PARK BOULEVARD—**From Neenah Avenue (6500 west) and Irving Park Boulevard (4000 north, Dunning) east to Broadway (4000 north at 800 west).  
Eastbound destination sign—**Irving Park-Broadway.**  
Westbound destination sign—**Irving Park-Neenah.**

**NIGHT CAR SCHEDULE:** Westbound, 1:07 A. M. to 2:17 A. M., 15 to 30 minute service; westbound, 2:17 A. M. to 5:37 A. M., 40 minute service; eastbound, 1:35 A. M. to 4:15 A. M., 40 minute service.

**KEDZIE AVENUE-CALIFORNIA AVENUE—**From West 67th Street (6700 south) and South Kedzie Avenue (3200 west) north via South Kedzie Avenue to North Kedzie Avenue to West Chicago Avenue to North California Avenue to Roscoe Street (2800 west at 3400 north).  
Northbound destination sign—**California-Roscoe.**  
Southbound destination sign—**Kedzie-67.**

**NIGHT CAR SCHEDULE:** Roscoe Street and California Avenue—Southbound, 1:19 A. M. to 4:19 A. M., 30 minute service. Bryn Mawr and Kedzie Avenues—Southbound, 1:20 A. M. to 4:20 A. M., 30 minute service. 67th Street and Kedzie Avenue—Northbound, 1:05 A. M. to 4:05 A. M., 30 minute service.

**KEDZIE AVENUE—Through Route No. 17—**From South Kedzie Avenue (3200 west) and West 67th Street (6700 south) north via South Kedzie Avenue to North Kedzie Avenue to West Chicago Avenue to North

California Avenue to Milwaukee Avenue to North Kedzie Avenue to Bryn Mawr Avenue (3200 west at 5600 north).  
Northbound destination sign—**Kedzie-Bryn Mawr.**  
Southbound destination sign—**Kedzie-67.**

**NIGHT CAR SCHEDULE:** 47th Street and Kedzie Avenue to California and Milwaukee Avenues—1:00 A. M. to 4:30 A. M., 15 minute service. Every second car goes through to Roscoe Street and California Avenue or Bryn Mawr Avenue and Kedzie Avenue on the north side, and 67th Street and Kedzie Avenue or 47th Street and Kedzie Avenue on the south side.

**LAKE-STATE THROUGH ROUTE NO. 16—**See State-Lake Through Route No. 16.

**LARAMIE AVENUE—**From South Laramie Avenue (5200 west) and West Harrison Street (600 south) north via South Laramie and North Laramie Avenues to West Lake Street (350 north at 5200 west).  
Northbound destination sign—**Laramie-Lake.**  
Southbound destination sign—**Laramie-Harrison.**

**NIGHT CAR SCHEDULE:** Last car leaves Lake Street at 11:00 P. M.; last car leaves Harrison Street at 11:07 P. M.

**LAWRENCE AVENUE—**From Austin Avenue (6000 west) and Lawrence Avenue (4800 north, Jefferson) east to Broadway (4800 north at 1200 west).  
Eastbound destination sign—**Lawrence-Broadway.**  
Westbound destination sign—**Lawrence-Austin.**

**NIGHT CAR SCHEDULE:** Westbound, 1:00 A. M. to 1:30 A. M., 10 to 20 minute service; westbound, 1:30 A. M. to 4:30 A. M., 30 minute service; eastbound, 1:00 A. M. to 2:00 A. M., 10 to 20 minute service; eastbound, 2:00 A. M. to 4:30 A. M., 30 minute service.

**LINCOLN AVENUE-BOWMANVILLE—**From Berwyn Avenue (5300 north) and Lincoln Avenue (2500 west) south and southeast via Lincoln Avenue to Center Street to North Clark Street to North Wells Street to Illinois Street, through LaSalle Street tunnel to West Madison Street to North Wells Street then north on North Wells Street, returning over incoming route.  
Northbound destination sign—**Lincoln-Berwyn.**  
Southbound destination sign—**Wells-Downtown.**

**NIGHT CAR SCHEDULE:** Madison and LaSalle Streets to Berwyn Avenue—Northbound, 1:07 A. M. to 1:19 A. M., 12 minute service; northbound, 1:19 A. M. to 5:39 A. M., 20 minute service; southbound, 1:01 A. M. to 4:21 A. M., 20 minute service.



Republic Statue, Jackson Park

**LINCOLN-ROSEHILL—**From Ravenswood Avenue (1800 west) and Cemetery Drive (5740 north) south, west and southeast via Ravenswood Avenue to Balmoral Avenue to North Robey Street to Lincoln Avenue to Center Street to North Clark Street to North Wells Street to West Illinois Street, through LaSalle Street tunnel to West Madison Street to North Wells Street, then north on North Wells Street, returning over incoming route.  
Northbound destination sign—**Ravenswood-Rosehill.**  
Southbound destination sign—**Wells-Downtown.**

## Morton Manufacturing Company CHICAGO

Makers of Kass Safety Treads used as standard on  
Chicago Surface Lines  
Also many other steel products for all industries.

**NIGHT CAR SCHEDULE:** Irving Park Boulevard to Rosehill Cemetery—Northbound, 1:15 A. M. to 4:45 A. M., 30 minute service; southbound, 1:05 A. M. to 4:35 A. M., 30 minute service.

**LINCOLN-INDIANA THROUGH ROUTE NO. 3**—See **Indiana-Lincoln Through Route No. 3**.

**MADISON STREET**—From West Madison Street (1 north) and Austin Avenue (6000 west) east to South Dearborn Street to West Monroe Street. Return route on West Monroe Street to South Clinton Street to West Madison Street to starting point.

Eastbound destination sign—**Madison-Downtown**.

Westbound destination sign—**Madison-Austin**.

Short line cars on this route stop at Springfield Avenue, westbound.

**NIGHT CAR SCHEDULE:** Monroe and Dearborn Streets to Austin Avenue—Westbound, 1:03 A. M. to 5:00 A. M., 10 minute service; eastbound, 1:01 A. M. to 4:31 A. M., 10 minute service.

Monroe and Dearborn Streets to Crawford Avenue via 5th Avenue—Westbound, last car leaves Monroe and Dearborn Streets at 11:53½ P. M.; eastbound, last car leaves Crawford Avenue at 11:24 P. M.

**MADISON STREET-FIFTH AVENUE**—From South Crawford Avenue (4000 west) and Fifth Avenue (600 south) northeast and east via Fifth Avenue to Madison Street to Dearborn Street to Monroe Street. Return route west on West Monroe Street to South Clinton Street to West Madison Street to starting point.

Eastbound destination sign—**Madison-Downtown**.

Westbound destination sign—**Fifth Avenue-Crawford**.

**NIGHT CAR SCHEDULE:** 5th Avenue and Madison Street to 5th and Crawford Avenues—Westbound, last car leaves 5th Avenue and Madison Street at 1:50 A. M.; eastbound, last car leaves 5th and Crawford Avenues at 2:00 A. M.

**MILWAUKEE-GALE**—From Carmen Avenue (5100 north) and Milwaukee Avenue (5468 west), southeast and east via Milwaukee Avenue to Desplaines Street to West Washington Street to North Dearborn Street to West Madison Street. Return route west on West Madison Street to North Clinton Street to Milwaukee Avenue and then over incoming route.

Northbound destination sign—**Milwaukee-Gale**.

Southbound destination sign—**Milwaukee-Downtown**.

**NIGHT CAR SCHEDULE:** Madison and Dearborn Streets to Carmen Avenue—Northbound, 1:05 A. M. to 5:05 A. M., 15 minute service; southbound, 1:01 A. M. to 4:31 A. M., 15 minute service.

**MILWAUKEE AVENUE-ARMITAGE AVENUE**—From Armitage Avenue (2000 north) and LeClaire Avenue (5100 west) east and southeast via Armitage Avenue to Milwaukee Avenue to North Desplaines Street to West Washington Street to North Dearborn Street to West Madison Street. Return route west on West Madison Street to North Clinton Street to Milwaukee Avenue and then over incoming route.

Northbound destination sign—**Armitage-Grand**.

Southbound destination sign—**Armitage-Downtown**.

**NIGHT CAR SCHEDULE:** From Grand and Armitage Avenues to Milwaukee and Armitage Avenues—Eastbound, 1:09 A. M. to 4:24 A. M., 15 minute service; westbound, 1:14 A. M. to 4:53 A. M., 15 minute service.

Telephone Wabash 1289

**Wiley, Magill & Johnson**

Est. 1876

**INSURANCE**

175 West Jackson Boulevard

CHICAGO

**MILWAUKEE AVENUE EXTENSION**—From Carmen Avenue (5100 north) and Milwaukee Avenue (5468 west) northwest to Devon Avenue (6400 north) and Milwaukee Avenue (6400 west) Norwood Park.

Northbound destination sign: **Milwaukee-Devon**.

Southbound destination sign: **Milwaukee-Carmen**.

**NIGHT CAR SCHEDULE:** Carmen Avenue to Devon Avenue—Northbound, 1:15 A. M. to 5:45 A. M., 30 minute service; southbound, 1:30 A. M. to 5:30 A. M., 30 minute service.

**MONTROSE AVENUE**—From North Knox Avenue (4600 west) and Montrose Avenue (4400 north) east to Broadway (4400 north at 1000 west).

Eastbound destination sign: **Montrose-Broadway**.

Westbound destination sign: **Montrose-Knox**.

**NIGHT CAR SCHEDULE:** Westbound, 1:03 A. M. to 1:30 A. M., 27 minute service; westbound, 1:30 A. M. to 4:30 A. M., 60 minute service; eastbound, 2:00 A. M. to 4:00 A. M., 60 minute service.

**MORGAN-RACINE-SANGAMON**—Through **Route No. 23**—From West Pershing Road (3900 south) and South Morgan Street (1000 west) north and west on South Morgan Street to West 31st Street to Throop Street to West 21st Street to South Racine Avenue to West Adams Street to South Sangamon Avenue to North Sangamon Avenue to West Austin Avenue to North Racine Avenue to West Erie Street to North Ashland Avenue. Returning same route.

Northbound destination sign—**Erie-Ashland**.

Southbound destination sign—**Morgan-Pershing**.

Short line cars on this route stop at 21st Street and Racine Avenue, southbound.

**NIGHT CAR SCHEDULE:** Pershing Road and Morgan Street to Erie Street and Ashland Avenue—Northbound, last car leaves Pershing Road and Morgan Street at 9:40 P. M.; southbound, last car leaves Erie Street and Ashland Avenue at 9:04 P. M.

21st Street and Racine Avenue to Erie Street and Ashland Avenue—Northbound, last car leaves 21st Street and Racine Avenue at 1:43 A. M.; southbound, last car leaves Erie Street and Ashland Avenue at 1:45 A. M.

**NOBLE STREET**—From West North Avenue (1600 north) and North Ashland Avenue (1600 west) east and south via West North Avenue to Holt Street to Blackhawk Street to Noble Street to Milwaukee Avenue (1037 north at 1401 west).

Northbound destination sign—**Noble-Ashland**.

Southbound destination sign—**Noble-Milwaukee**.

**NIGHT CAR SCHEDULE:** Southbound, last car leaves Ashland and North Avenues at 8:32 P. M.; northbound, last car leaves Noble Street and Milwaukee Avenue at 8:40 P. M.

**NORTH AVENUE**—From North Austin Avenue (6000 west) and North Avenue (1600 north) east to North Clark Street (100 west at 1600 north).

Eastbound destination sign—**North-Clark**.

Westbound destination sign—**North-Austin**.

Short line cars on this route stop at Cicero Avenue, westbound.

**NIGHT CAR SCHEDULE:** Eastbound, 1:00 A. M. to 4:00 A. M., 30 minute service; westbound, 1:38 A. M. to 4:38 A. M., 30 minute service.

**OGDEN AVENUE**—From West 25th Street (2500 south) and South Laramie Avenue (5200 west) east and northeast via West 25th Street to South Cicero Avenue to Ogden Avenue to West Randolph Street to North Dearborn Street to West Washington Street, westbound on West Washington Street to North Desplaines Street to West Randolph Street and then over incoming route.

Eastbound destination sign—**Ogden-Downtown**.

Westbound destination sign—**25-Laramie**.

Short line cars on this route stop at Crawford Avenue, westbound.

**NIGHT CAR SCHEDULE:** Southbound, 1:11 A. M. to 5:11 A. M., 30 minute service; northbound, 1:01½ A. M. to 4:31 A. M., 30 minute service.



**PERSHING ROAD (39th Street)**—From Root Street (4150 south; Union Stock Yards) and South Halsted Street (800 west) east and north via Root Street to South Wallace Street to West Pershing Road to East Pershing Road and Cottage Grove Avenue (3900 south at 800 east). Eastbound destination sign—**Pershing-Cottage**. Westbound destination sign—**Stockyards**.

**NIGHT CAR SCHEDULE:** Eastbound, 1:20 A. M. to 4:50 A. M., 30 minute service; westbound, 1:05 A. M. to 4:35 A. M., 30 minute service.

**PERSHING ROAD EXTENSION**—From West Pershing Road (3900 south) and Ashland Avenue (1600 west) west to West Pershing Road (3900 south) and Western Avenue (2400 west). Eastbound destination sign—**Ashland**. Westbound destination sign—**Western**.

**NIGHT CAR SCHEDULE:** Westbound, last car leaves Ashland Avenue at 7:12 P. M.; eastbound, last car leaves Western Avenue at 7:18 P. M.

**RIVERDALE**—From 119th Street (11900 south) and South Michigan Avenue (50 east) south and east via South Michigan Avenue to East 127th Street to Illinois Central R. R. to East 134th Street to Indiana Avenue to Leyden Avenue to 138th Street (13800 south at 300 east). Northbound destination sign—**Michigan-119**. Southbound destination sign—**Leyden-138**.

**NIGHT CAR SCHEDULE:** Northbound, last car leaves 138th Street and Leyden Avenue at 11:55 P. M.; southbound, last car leaves 119th Street and Michigan Avenue at 11:39 P. M.

**RIVERVIEW-LARRABEE**—From North Western Avenue (2400 west, Riverview Park) and Roscoe Street (3400 north) east and south via Roscoe Street to North Robey Street to Belmont Avenue to Lincoln Avenue to Larrabee Street to Chicago Avenue to Kingsbury Avenue to West Erie Street to North Franklin Street to West Kinzie Street to North Dearborn Street to West Randolph Street; returning west on West Randolph Street to North Wells Street to West Kinzie Street and north over incoming route. Northbound destination sign—**Roscoe-Western**. Southbound destination sign—**Downtown**.

**NIGHT CAR SCHEDULE:** Northbound, last car leaves Randolph and Dearborn Streets at 2:03 A. M.; southbound, last car leaves Roscoe Street and Western Avenue at 1:30 A. M.

**ROBEY STREET**—From South Robey Street (2000 west) and Blue Island Avenue (2400 south) north via South Robey Street to North Robey Street and Fullerton Avenue (2000 west at 2400 north). Northbound destination sign—**Robey-Fullerton**. Southbound destination sign—**Robey-Blue Island**.

**NIGHT CAR SCHEDULE:** Fullerton Avenue to Blue Island Avenue—Northbound, 1:45 A. M. to 4:40 A. M., 35 minute service; southbound, 1:45 A. M. to 4:40 A. M., 35 minute service.

**ROBEY STREET-SOUTH**—From West 47th Street (4700 south) and South Robey Street (2000 west) south via South Robey Street to West 63rd Street (6300 south at 2000 west). Northbound destination sign—**Robey-47**. Southbound destination sign—**Robey-63**.

**NIGHT CAR SCHEDULE:** 47th Street to 63rd Street—Southbound, last car leaves 47th Street at 12:18 A. M.; northbound, last car leaves 63rd Street at 12:05 A. M.

**ROOSEVELT ROAD-DOWNTOWN**—From South Austin Avenue (6000 west) and West Roosevelt Road (1200 south) east and north on West Roosevelt Road to South Canal Street to Polk Street to South Wells Street to West Adams Street to South Dearborn Street to West Van

Buren Street to South Wells Street, to West Polk Street to South Canal Street to West Roosevelt Road, thence west to starting point. Eastbound destination sign—**Roosevelt-Downtown**. Westbound destination sign—**Roosevelt-Austin**. Short line cars on this route stop at Crawford and Cicero Avenues, westbound.

**NIGHT CAR SCHEDULE:** Cicero Avenue to Canal Street and Roosevelt Road—Eastbound, 1:13 A. M. to 5:13 A. M., 15 minute service. Every other car to Adams and Dearborn Streets or Roosevelt Road and Wabash Avenue at east end. Every other car to Cicero Avenue or Austin Avenue at west end. Adams and Dearborn Streets to Canal Street and Roosevelt Road—Westbound, 1:14 A. M. to 5:14 A. M., 30 minute service. Roosevelt Road and Wabash Avenue to Canal Street and Roosevelt Road—Westbound, 1:34 A. M. to 5:04 A. M., 30 minute service.

**ROOSEVELT ROAD-WABASH AVENUE**—From South Austin Avenue (6000 west) and West Roosevelt Road (1200 south) east via West Roosevelt Road to South Wabash Avenue and East Roosevelt Road (1200 south at 50 east). Eastbound destination sign—**Roosevelt-Wabash**. Westbound destination sign—**Roosevelt-Austin**. Short line cars on this route stop at Cicero and Crawford Avenues, westbound.

**NIGHT CAR SCHEDULE:** Austin Avenue to Cicero Avenue—Eastbound, 1:31 A. M. to 4:31 A. M., 30 minute service.

**SOUTH DEERING-SOUTH CHICAGO**—From East 63rd Street (6300 south) and Dorchester Avenue (1400 east) south and east via Dorchester Avenue to East 64th Street to Stony Island Avenue to East 73rd Street to Exchange Avenue to 75th Street to Coles Avenue to East 79th Street to Brandon Avenue to East 83rd Street to Burly Avenue to 87th Street to Buffalo Avenue to East 92nd Street to Commercial Avenue to 104th Street to Torrence Avenue to East 124th Street (12400 south at 2650 east). Northbound destination sign—**Dorchester-63**. Southbound destination sign—**Torrence-124**. Short line cars on this route stop at 112th Street and Torrence Avenue, southbound.

**NIGHT CAR SCHEDULE:** 63rd Street and Dorchester Avenue to 112th Street and Torrence Avenue—Southbound, 1:34 A. M. to 4:54 A. M., 50 minute service; northbound, 1:40 A. M. to 4:10 A. M., 50 minute service. Southbound, last car leaves 112th Street and Torrence Avenue at 12:31 A. M.; northbound, last car leaves 124th Street and Torrence Avenue at 12:41 A. M.

**STATE STREET**—From West 120th Street (12000 south) and South Morgan Street (1000 west) east and north via 120th Street to Halsted Street to 119th Street to South Michigan Avenue to 95th Street to South State Street to North State Street to West Division Street to North Wells Street (200 west at 1200 north). Northbound destination sign—**Division-Wells**. Southbound destination sign—**119-Morgan**. Short line cars on this route stop at 63rd Street and 79th Street, southbound.

Founded 1859

Operating in 34 cities

**Brink's Express Company, Inc.**

TRANSPORTATION OF MONEY AND VALUABLES

Jackson Boulevard at Jefferson Street—Telephone Central 8686  
CHICAGO

Bonded and insured for over \$25,000,000.00 by National Surety Co.

**NIGHT CAR SCHEDULE:** 79th and State Streets to Division and Wells Streets—Northbound and southbound, 1:12 A. M. to 4:42 A. M., 15 minute service; 119th and Morgan Streets to 79th and State Streets, northbound, 1:13 A. M. to 4:43 A. M., 30 minute service. Every other car goes through to 119th and Morgan Streets.

**STATE-LAKE—Through Route No. 16**—From 63rd Street (6300 south) and South State Street (1 east) north and west via South State Street to North State Street to West Lake Street to North Austin Avenue (6000 west at 400 north).

Northbound destination sign—**Lake-Austin.**

Southbound destination sign—**State-63.**

**NIGHT CAR SCHEDULE:** Southbound, last car leaves Lake Street and Austin Avenue at 12:30 A. M.; northbound, last car leaves 63rd Street and State Street at 12:30 A. M.

**STONY ISLAND AVENUE**—From Stony Island Avenue (1600 east) and East 93rd Street (9300 south) north and northwest via Stony Island Avenue to East 56th Street to Lake Park Avenue to 47th Street to Cottage Grove Avenue to Indiana Avenue to 18th Street to Wabash Avenue to Washington Street to Garland Court to Randolph Street to Wabash Avenue, returning south over incoming route.

Northbound destination sign—**Downtown.**

Southbound destination sign—**Stony Island-93.**

Short line cars on this route stop at 64th Street and 80th Street, southbound.

**NIGHT CAR SCHEDULE:** Southbound, last car leaves Randolph Street and Wabash Avenue at 12:47½ A. M.; northbound, last car leaves 93rd Street at 11:48 A. M.

**TAYLOR-SEDGWICK-SHEFFIELD**—From West Taylor Street (1000 south) and South Western Avenue (2400 west) east and north via Taylor Street to South Canal Street to Polk Street to Wells Street to Kinzie Street to Orleans Street to West Division Street to Sedgwick Street to Lincoln Avenue to Sheffield Avenue to North Clark Street (3500 north at 1000 west). Return over same route to Orleans Street to Austin Avenue to Wells Street, thence south over incoming route.

Northbound destination sign—**Sheffield-Clark.**

Southbound destination sign—**Taylor-Western.**

**NIGHT CAR SCHEDULE:** Northbound, 1:15 A. M. to 4:45 A. M., 30 minute service; southbound, 1:00 A. M. to 4:30 A. M., 30 minute service.

**VAN BUREN STREET**—From South Kedzie Avenue (3200 west) and West Van Buren Street (400 south) east via West Van Buren Street to South Clinton Street to West Adams Street to South Dearborn Street to West Van Buren Street and westbound on Van Buren Street over incoming route.

Eastbound destination sign—**Van Buren-Downtown.**

Westbound destination sign—**Van Buren-Kedzie.**

**NIGHT CAR SCHEDULE:** Westbound, 1:03 A. M. to 2:12 A. M., 15 to 24 minute service; westbound, 2:12 A. M. to 4:42 A. M., 30 minute service; eastbound, 1:45 A. M. to 4:15 A. M., 30 minute service.

## John B. Kausal Coal Company

WHOLESALE COAL RETAIL

223 S. Crawford Avenue at Jackson Blvd. Rail Yard, Kildare Ave. at Taylor St.  
CHICAGO

Telephone Kedzie 7433

**WALLACE STREET AND RACINE AVENUE**—From West 87th Street (8700 south) and South Racine Avenue (1200 west) north and east via Racine Avenue to West 47th Street to South Halsted Street to West Pershing Road to Wallace Street to West 29th Street to Canal Street to Archer Avenue to South State Street to Polk Street to Dearborn Street to Lake Street to North State Street. Returning south on North State Street to South State Street to Archer Avenue, to starting point. Northbound destination sign—**Racine-Downtown.**

Southbound destination sign—**Racine-87.**

**NIGHT CAR SCHEDULE:** Southbound, 1:01 A. M. to 1:25 A. M., 24 minute service; southbound, 1:25 A. M. to 5:25 A. M., 30 minute service; northbound, 1:14 A. M. to 4:44 A. M., 30 minute service.

**WEBSTER-LINCOLN-FULLERTON-RACINE—Loop**—(2200 to 2400 north at 2400 to 2700 west).

Northbound destination sign—**Webster-Racine.**

Southbound destination sign—**Webster-Racine.**

**NIGHT CAR SCHEDULE:** Last car leaves Fullerton and Racine Avenues at 12:30 A. M.

**WESTERN AVENUE—Through Route No. 10**—From West 75th Street (7500 south) and Western Avenue (2400 west) north on Western Avenue to Howard Street (7600 north at 2400 west).

Northbound destination sign—**Western-Howard.**

Southbound destination sign—**Western-75.**

Short line cars on this route stop at Archer Avenue, 63rd Street and 71st Street, southbound; and Roscoe Street and Lincoln Avenue, northbound.

**NIGHT CAR SCHEDULE:** Northbound, 1:00 A. M. to 4:30 A. M., 30 minute service; southbound, 1:00 A. M. to 4:30 A. M., 30 minute service.

**WHITING AND EAST CHICAGO**—From East 63rd Street (6300 south) and South Park Avenue (400 east) south and southeast via South Park Avenue to South Chicago Avenue to 91st Street to Commercial Avenue to South Chicago Avenue to East 95th Street to Ewing Avenue to 106th Street to Indianapolis Avenue (State Line) thence to Whiting and East Chicago, Indiana.

Northbound destination sign—**South Park-63.**

Southbound destination sign—**Whiting-E. Chicago.**

**NIGHT CAR SCHEDULE:** Last car leaves 63rd Street and South Park Avenue at 1:00 A. M.; last car leaves East Chicago at 12:05 A. M.; last car leaves East Chicago to 92nd Street and Commercial Avenue at 1:00 A. M.

**WINDSOR PARK-SOUTH CHICAGO**—From East 63rd Street (6300 south) and Dorchester Avenue (1400 east) south and east via Dorchester Avenue to East 64th Street to Stony Island Avenue to East 73rd Street to Exchange Avenue to East 75th Street to Coles Avenue to East 79th Street to Exchange Avenue to East 83rd Street to Commercial Avenue to East 95th Street to Ewing Avenue to 108th Street to Avenue F (10800 south at 3850 east).

Northbound destination sign—**Dorchester-63.**

Southbound destination sign—**108-Avenue F.**

**NIGHT CAR SCHEDULE:** Northbound, 1:09 A. M. to 4:29 A. M., 50 minute service; southbound, 1:16 A. M. to 1:59 A. M., 43 minute service; southbound, 1:59 A. M. to 5:19 A. M., 50 minute service.

**14th STREET-16th STREET**—From West 16th Street (1600 south) and South Kenton Avenue (4600 west) east via West 16th Street to South Kedzie Avenue to West Roosevelt Road to South Robey Street to West 14th Street to South Canal Street to West Roosevelt Road to East Roosevelt Road and South Wabash Avenue (1200 south at 48 east).

Eastbound destination sign—**Roosevelt-Wabash.**

Westbound destination sign—**16-Kenton.**

**NIGHT CAR SCHEDULE:** Eastbound, 1:29 A. M. to 2:21 A. M., 24 to 28 minute service; eastbound, 2:21 A. M. to 4:50 A. M., 30 minute service; westbound, 2:33 A. M. to 4:33 A. M., 30 minute service.



**18th STREET**—From Blue Island Avenue (2500 south) and South Leavitt Street (2200 west) north and east via South Leavitt Street and West 18th Street to South State Street (1800 south at 1 west).  
Eastbound destination sign—**18-State**.  
Westbound destination sign—**Blue Island-Leavitt**.

**NIGHT CAR SCHEDULE:** Eastbound, 1:25 A. M. to 4:55 A. M., 30 minute service; westbound, 1:25 A. M. to 4:55 A. M., 30 minute service.

**22nd STREET**—From West 22nd Street (2200 south) and South Kenton Avenue (4600 west) east via West 22nd Street to East 22nd Street and South Wabash Avenue (2200 south at 50 east).  
Eastbound destination sign—**22-Wabash**.  
Westbound destination sign—**22-Kenton**.

**NIGHT CAR SCHEDULE:** Kenton Avenue to Wabash Avenue—Eastbound, 1:10 A. M. to 4:55 A. M., 15 minute service; westbound, 1:14 A. M. to 4:59 A. M., 15 minute service.

**22nd STREET-LAWNDALE AVENUE**—From West 33rd Street (3300 south) and South Lawndale Avenue (3700 west) north and east via South Lawndale Avenue to West 25th Street to South Kedzie Avenue to West 22nd Street to East 22nd Street and Wabash Avenue (2200 south at 50 east).  
Eastbound destination sign—**22-Wabash**.  
Westbound destination sign—**Lawndale-32**.

**NIGHT CAR SCHEDULE:** Lawndale Avenue and 33rd Street to Wabash Avenue—Westbound, last car leaves Wabash Avenue at 12:06 A. M.; eastbound, last car leaves Lawndale Avenue and 33rd Street at 11:31 A. M.

**26th STREET**—From West 26th Street (2600 south) and South Halsted Street (800 west) east via West 26th Street to East 26th Street and Cottage Grove Avenue (2600 south at 400 east).  
Eastbound destination sign—**26-Cottage**.  
Westbound destination sign—**26-Halsted**.

**NIGHT CAR SCHEDULE:** Westbound, last car leaves Cottage Grove Avenue at 12:35 A. M.; eastbound, last car leaves Halsted Street at 12:15 A. M.

**31st STREET**—From West 31st Street (3100 south) and Archer Avenue (1400 west) east via West 31st Street to Illinois Central R. R. (3100 south at 600 east).  
Eastbound destination sign—**31-Lake Park**.  
Westbound destination sign—**Pitney-Archer**.

**NIGHT CAR SCHEDULE:** Eastbound, 1:00 A. M. to 5:00 A. M., 15 minute service; westbound, 1:07 A. M. to 5:22 A. M., 15 minute service.

**35th STREET**—From West 36th Street (3600 south) and South Kedzie Avenue (3200 west) east via West 36th Street to South California Avenue to West 35th Street to Cottage Grove Avenue (3500 south at 800 east).  
Eastbound destination sign—**35-Cottage**.  
Westbound destination sign—**36-Kedzie**.

**NIGHT CAR SCHEDULE:** Eastbound, 1:23 A. M. to 4:23 A. M., 30 minute service; westbound, 1:55 A. M. to 5:25 A. M., 30 minute service.

**43rd STREET-ROOT STREET**—From South Halsted (800 west) and Root Street (4150 south) east on Root Street to South State Street to East 43rd Street to Illinois Central R. R. (1200 east at 4300 south).  
Eastbound destination sign—**43-Oakenwald**.  
Westbound destination sign—**Stock Yards**.

**NIGHT CAR SCHEDULE:** Eastbound, 1:00 A. M. to 5:00 A. M., 20 minute service; westbound, 1:18 A. M. to 5:18 A. M., 20 minute service.

**47th STREET**—From South Kedzie Avenue (3200 west) and 47th Street (4700 south) east to Illinois Central R. R. (4700 south at 1400 east).  
Eastbound destination sign—**47-Lake Park**.  
Westbound destination sign—**47-Kedzie**.  
Short line cars on this route stop at Cottage Grove Avenue, eastbound.

**NIGHT CAR SCHEDULE:** Eastbound, 1:03 A. M. to 4:48 A. M., 15 minute service; westbound, 1:08 A. M. to 4:53 A. M., 15 minute service.

**51st STREET**—From West 51st Street (5100 south) and South Leavitt Street (2200 west) east on West 51st Street to East 51st Street to South Park Avenue (400 east at 5100 south).  
Eastbound destination sign—**51-South Park**.  
Westbound destination sign—**51-Leavitt**.

**NIGHT CAR SCHEDULE:** Eastbound, 1:00 A. M. to 5:00 A. M., 20 minute service; westbound, 1:16 A. M. to 5:16 A. M., 20 minute service.

**51st STREET EXTENSION**—From South Leavitt Street (2200 west) and West 51st Street (5100 south) west to South Central Park Avenue and West 51st Street (3600 west at 5100 south).  
Eastbound destination sign—**51-Leavitt**.  
Westbound destination sign—**51-Central Park**.

**NIGHT CAR SCHEDULE:** Westbound, last car leaves Leavitt Street at 12:38 A. M.; eastbound, last car leaves St. Louis Avenue at 12:26 A. M.

**59th STREET-61st STREET**—From South Central Park Avenue (3600 west) and West 59th Street (5900 south) east via West 59th Street to South State Street to East 61st Street to Blackstone Avenue to East 60th Street (6000 south at 1450 east).  
Eastbound destination sign—**Blackstone-60**.  
Westbound destination sign—**59-Central Park**.

**NIGHT CAR SCHEDULE:** Eastbound, 1:03 A. M. to 5:03 A. M., 15 minute service; westbound, 1:02 A. M. to 5:02 A. M., 15 minute service.

**63rd STREET**—From West 63rd Place (6350 south) and South Melvina Avenue (6200 west) east via West 63rd Place to South Central Avenue to West 63rd Street to East 63rd Street and Stony Island Avenue (6300 south at 1600 east).  
Eastbound destination sign—**63-Stony Island**.  
Westbound destination sign—**63-Melvina**.

Short line cars on this route stop at Western Avenue and Central Park Avenue, westbound.

**NIGHT CAR SCHEDULE:** Stony Island Avenue to Central Park Avenue—Westbound, 1:01 A. M. to 4:46 A. M., 15 minute service; Central Park Avenue to Stony Island Avenue, eastbound, 1:09 A. M. to 4:39 A. M., 15 minute service; every other car goes through to Melvina Avenue; Melvina Avenue to Central Park Avenue, 1:26 A. M. to 4:26 A. M., 30 minute service.

**67th STREET-69th STREET**—From West 71st Street (7100 south) and South California Avenue (2800 west) east via West 71st Street to South Western Avenue to West 69th Street to Keefe Avenue to Rhodes Avenue to East 67th Street to South Shore Drive (6700 south at 2400 east).  
Eastbound destination sign—**67-Oglesby**.  
Westbound destination sign—**71-California**.  
Shortline cars on this route stop at 69th Street and Western Avenue, westbound.

## RAILWAY CURTAIN COMPANY

ESTABLISHED 1910

CHICAGO

RACCO CURTAINS



with DUQUAD FIXTURES again specified by Chicago Surface  
Lines for 100 cars

**NIGHT CAR SCHEDULE:** South Shore Drive to Western Avenue—Westbound, 1:05 A. M. to 5:05 A. M., 15 minute service; eastbound, 1:10 A. M. to 4:30 A. M., 15 minute service; South Shore Drive to California Avenue, last car leaves South Shore Drive at 11:43½ P. M.; last car leaves California Avenue at 12:20½ A. M.

**71st STREET**—From Wentworth Avenue (200 west) and Vincennes Avenue at 73rd Street (7300 south) northeast and east via Vincennes Avenue to West 71st Street to East 71st Street to Cottage Grove Avenue (7100 south at 800 east).

Eastbound destination sign—**71-Cottage.**

Westbound destination sign—**Vincennes-73.**

**NIGHT CAR SCHEDULE:** Last car leaves Cottage Grove Avenue at 1:05 A. M.; last car leaves 73rd Street and Vincennes Avenue at 12:53 A. M.

**75th STREET**—From West 74th Street (7400 south) and South Ashland Avenue (1600 west) east via West 74th Street to Eggleston Avenue to West 75th Street to East 75th Street and Lake Michigan (Manhattan Beach, 7500 south at 2800 east).

Eastbound destination sign—**75-Lake.**

Westbound destination sign—**74-Ashland.**

**NIGHT CAR SCHEDULE:** Westbound, 1:15 A. M. to 5:15 A. M., 30 minute service; eastbound, 1:15 A. M. to 5:15 A. M., 30 minute service.

**79th STREET**—From West 79th Street (7900 south) and South Ashland Avenue (1600 west) east on West 79th Street to East 79th Street and Lake Michigan (Rocky Ledge Beach, 7900 south at 3300 east).

Eastbound destination sign—**79-Brandon.**

Westbound destination sign—**79-Ashland.**

**NIGHT CAR SCHEDULE:** Westbound, 1:50 A. M. to 5:20 A. M., 30 minute service; eastbound, 1:20 A. M. to 4:50 A. M., 30 minute service.

**87th STREET**—From Stony Island Avenue (1600 east) and East 87th Street (8700 south) to East 87th Street and Commercial Avenue (8700 south at 3000 east).

Eastbound destination sign—**87-Commercial.**

Westbound destination sign—**87-Stony Island.**

**NIGHT CAR SCHEDULE:** Last car leaves Stony Island Avenue at 1:00 A. M.; last car leaves Commercial Avenue at 1:10 A. M.

**93rd STREET-95th STREET**—From East 95th Street (9500 south) and South State Street (1 east) east via East 95th Street to Cottage Grove Avenue to 93rd Street to South Chicago Avenue to Exchange Avenue to East 92nd Street to Buffalo Avenue to East 89th Street to Illinois Steel Co. Mills (3400 east at 8900 south).

Eastbound destination sign—**89-Strand.**

Westbound destination sign—**95-State.**

**NIGHT CAR SCHEDULE:** Eastbound, 1:03 A. M. to 5:03 A. M., 30 minute service; westbound, 1:12 A. M. to 4:42 A. M., 30 minute service.

**103rd STREET**—From 103rd Street (10300 south) and Vincennes Avenue (1300 west, Washington Heights) east via 103rd Street to Cottage Grove Avenue (10300 south at 700 east).

Eastbound destination sign—**103-Cottage.**

Westbound destination sign—**103-Vincennes.**

**NIGHT CAR SCHEDULE:** Last car leaves Cottage Grove Avenue at 1:15 A. M.; last car leaves Vincennes Avenue at 1:40 A. M.

**106th STREET**—From Torrence Avenue (2600 east) and 106th Street (10600 south) east via East 106th Street to State Line (4050 east at 10600 south).

Eastbound destination sign—**106-State Line.**

Westbound destination sign—**106-Torrence.**

**NIGHT CAR SCHEDULE:** Last car leaves Torrence Avenue at 11:38 P. M.; last car leaves State Line at 11:52 P. M.

**111th STREET**—From West 111th Street (11100 south) and Vincennes Avenue (1665 west) east via East 111th Street to Cottage Grove Avenue (11100 south at 500 east).

Eastbound destination sign—**111-Cottage.**

Westbound destination sign—**111-Vincennes.**

**NIGHT CAR SCHEDULE:** Last car leaves Vincennes Avenue at 11:50 P. M.; last car leaves Cottage Grove Avenue at 11:30 P. M.

**115th STREET**—From West 115th Street (11500 south) and South Halsted Street (800 west) east via East 115th Street to Cottage Grove Avenue (11500 south at 500 east).

Eastbound destination sign—**115-Cottage.**

Westbound destination sign—**115-Halsted.**

**NIGHT CAR SCHEDULE:** Last car leaves Cottage Grove Avenue at 11:40 P. M.; last car leaves Halsted Street at 11:50 P. M.

**119th STREET**—From West 119th Street (11900 south) and Vincennes Avenue (2000 west) east via 119th Street to South Morgan Street (11900 south at 1000 west).

Eastbound destination sign—**119-Morgan.**

Westbound destination sign—**119-Vincennes.**

**NIGHT CAR SCHEDULE:** Last car leaves Morgan Street at 10:55 P. M.; last car leaves Vincennes Avenue at 11:02 P. M.

## DISTANCES IN CHICAGO

### North from Madison Street

Miles	House Nos.	Street Names
½	400	Kinzie Street
1	800	Chicago Avenue
1½	1200	Division Street
2	1600	North Avenue
2½	2000	Armitage Avenue
3	2400	Fullerton Avenue
3½	2800	Diversey Avenue
4	3200	Belmont Avenue
4½	3600	Addison Street
5	4000	Irving Park Boulevard
5½	4400	Montrose Avenue
6	4800	Lawrence Avenue
6½	5200	Foster Avenue
7	5600	Bryn Mawr Avenue
7½	6000	Peterson Avenue
8	6400	Devon Avenue
8½	6800	Pratt Avenue
9	7200	Kenilworth Avenue
9½	7600	Howard Street
9¾	7800	Juneway Terrace
		(City limits farthest north.)

### South from Madison Street

½	600	Harrison Street
1	1200	Roosevelt Road
1½	1600	16th Street
2	2200	22nd Street
2½	2600	26th Street
3	3100	31st Street
3½	3500	35th Street
4	3900	Pershing Road
4½	4300	43rd Street
5	4700	47th Street



Miles	House Nos.	Street Names
5 1/2	5100	51st Street
6	5500	55th Street
6 1/2	5900	59th Street
7	6300	63rd Street
7 1/2	6700	67th Street (Marquette Road).
8	7100	71st Street
8 1/2	7500	75th Street
9	7900	79th Street
9 1/2	8300	83rd Street
10	8700	87th Street
10 1/2	9100	91st Street
11	9500	95th Street
11 1/2	9900	99th Street
12	10300	103rd Street
12 1/2	10700	107th Street
13	11100	111th Street
13 1/2	11500	115th Street
14	11900	119th Street
14 1/2	12300	123rd Street
15	12700	127th Street*
15 1/2	13100	131st Street
16	13500	135th Street
16 1/2	13800	138th Street (City limits farthest south.)

#### West from State Street

1/2	400	Stewart Avenue
1	800	Halsted Street
1 1/2	1200	Racine Avenue
2	1600	Ashland Avenue
2 1/2	2000	Robey Street
3	2400	Western Avenue
3 1/2	2800	California Avenue
4	3200	Kedzie Avenue
4 1/2	3600	Central Park Avenue
5	4000	Crawford Avenue
5 1/2	4400	Kostner Avenue
6	4800	Cicero Avenue
6 1/2	5200	Laramie Avenue
7	5600	Central Avenue
7 1/2	6000	Austin Avenue
8	6400	Narragansett Avenue
8 1/2	6800	Oak Park Avenue
9	7200	Harlem Avenue
9 1/2	7600	Oriole Avenue
9 3/4	7800	Ozanam Avenue (City limits farthest west).

#### East from State Street at 104th Street

(East from State Street at Madison Street, the lake front is 1/2 mile).

1/2	400	South Park Avenue
1	800	Cottage Grove Avenue
1 1/2	1200	Woodlawn Avenue
2	1600	Stony Island Avenue
2 1/2	2000	Jeffrey Avenue
3	2400	Yates Avenue
3 1/2	2800	Manistee Avenue
4	3200	Brandon Avenue
4 1/2	3600	Avenue L.
5 1/8	4100	City Limits, Lake Front and Indiana State Line.

\*Continuing south on Indiana Avenue

## A LONG STREET CAR RIDE

The Chicago Surface Lines provide the longest street car ride for one fare and, due to the liberal transfer privileges, the longest average ride of any street car system in the world. It is possible to ride more than 40 miles on the system for one fare by the use of transfers. The average ride per fare is more than 4 miles.

One interesting ride directly across the city from the south to the north city limits, which can be made for one fare, is 31.4 miles in length. It covers a great deal of the most interesting part of Chicago.

Starting at 138th Street and Leyden Avenue on the Riverdale Line the passenger rides 2.7 miles to 119th Street and Michigan Avenue where he transfers to the State Street line and rides 16.1 miles to Division Street. At Division Street he transfers to the Broadway line and rides 5 miles to Lawrence Avenue, transferring to the Lawrence Avenue line and going west 5 miles to Milwaukee Avenue. At Milwaukee Avenue he transfers to the Milwaukee line and rides to Devon Avenue, 2.6 miles, at the northern boundary of the city.

On this trip the passenger crosses the Calumet River, passes the Pullman Car Works, goes through the loop, across the Chicago River, along the west side of Lincoln Park, through the Wilson Avenue business district, across the North Branch of the Chicago River and finishes at the Caldwell Forest Reserve on the northwest boundary of the city.

P. B. Hosmer,  
President & Treasurer

Rockwood Hosmer,  
Vice-President

A. J. Kuelzow  
Secretary

Insurance Agency of

# R. W. Hosmer & Co.

Established 1867

For more than half a century this office has been rendering its clients unexcelled and dependable service.

It is important that your insurance be handled by a competent and experienced Agency so that in event of loss your interests will be property protected.

When next you need insurance telephone or write us.

Insurance Exchange, 175 W. Jackson Street.  
Telephones Wabash 3913-8276

# GROWING *with* CHICAGO

**R**APID growth of the City of Chicago, combined with ever-increasing demand for electric light and power for the City's homes, industries and transportation systems has resulted in rapid growth of the Commonwealth Edison Company.

In the past 20 years the number of customers has increased 19 times. Output has increased 23.6 times with an increase in capitalization of only 5.9 times.

The Company's customers now total more than 834,000 including Chicago's surface and elevated railroad lines and many of the City's largest industrial concerns.

The new Crawford Avenue power house, now in operation, will have an eventual capacity of 750,000 or more kilowatts making it one of the world's largest steam-operated central stations. The Company's generating and storage-battery capacity is now 963,000 kilowatts.

Stockholders total more than 42,000. More than 85 per cent of these investors are customers of the Company—reflecting Chicago's growing appreciation of the Company's dependable service.

## Commonwealth Edison Company

72 West Adams Street

CHICAGO



First Section, CRAWFORD AVENUE GENERATING STATION,  
Crawford Avenue and Thirty-ninth Street

