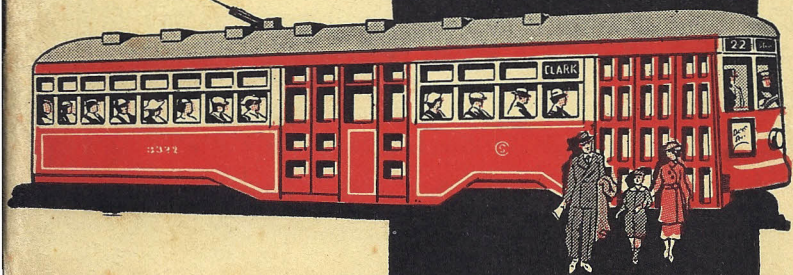


See Chicago

Use
CHICAGO
SURFACE
LINES



ANYWHERE IN CHICAGO BY SURFACE LINES

Every section of Chicago is served by the Chicago Surface Lines. Of the entire population inside the city limits, 98 per cent live within three blocks of one or more Surface Lines routes.

The fare on the Surface Lines is 7 cents with free transfers issued at the time fare is paid. Transfers are good as long as the passenger is going in the same general direction and uses the most direct and reasonable route.

Car stops are indicated by white bands on the poles at street intersections. Bus stops are indicated by bus stop signs at the curb.

When it is desirable to use the Chicago Rapid Transit System as a part of a trip to or through the central business district from one section of the city to the other, transfers can be made between the Surface and Elevated Lines.

Transferring is restricted to 55 stations to passengers paying a 10 cent cash fare on either system. See detailed instructions on Page 15.

*For lost and found and other information call
Dearborn 8800.*

WHAT TO SEE IN CHICAGO

Below are listed principal points of interest in Chicago, classified under appropriate headings alphabetically arranged. Directions for reaching these places by Chicago Surface Lines presume starting from the central business district. Numbers in parentheses refer to locations on the map in this book.

AIRPORTS

CHICAGO MUNICIPAL AIRPORT (47)—63rd St. and Cicero Av. (6300 s.—4800 w.). One of the nation's finest airports and the greatest scene of aeronautical activity in the United States. Board southbound State St. cars in State St. or Clark-Wentworth or Through Route No. 22 cars in Clark St. and transfer west on 63rd St. to Cicero Av.

AMPHIBIAN LANDING FIELD—Lake shore at Grant Park, near the Aquarium.

AMUSEMENT PARKS

RIVERVIEW PARK (5)—Belmont and Western Aves. (3200 n.—2400 w.). A large summer amusement park. Take Riverview-Larrabee cars at Dearborn and Randolph Sts., or Clybourn Av. cars in Wells St. direct to park. By transfer, north on Western Av. or west on Belmont Av. direct to park.

WHITE CITY (49)—63rd St. and South Park Av. (6300 s.—400 e.). Ballroom dancing, roller skating and bowling the year around. Take southbound Clark-Wentworth or Through Route No. 22 cars in Clark St., or State St. cars, south to 63rd St. and transfer east to park; Cottage Grove Av. cars in Wabash Av. south to 63rd St. and transfer west to park.

AQUARIUMS

JOHN G. SHEDD AQUARIUM (34)—Lake shore and Roosevelt Rd. (1200 s.). Open every day 10 A. M. to 5 P. M. Free Thurs., Sat. and Sun. Other days 25 cents admission. School children admitted free every day. Both fresh and salt water fish. Take any southbound car in Wabash, except cars marked Wabash-Harrison, or any southbound car in State St., or southbound car in Clark St., except those marked Clark-Downtown, transfer east on Roosevelt Rd. to the terminal.

LINCOLN PARK AQUARIUM (10)—Located near the animal house. Contains a splendid collection of fresh-water fish. See Lincoln Park under PARKS for directions for reaching aquarium.

BASEBALL PARKS

CUBS PARK (WRIGLEY FIELD) (4)—Clark and Addison Sts. (1100 w.—3600 n.). Home grounds of the Chicago National League baseball team. Take Clark-Wentworth or Through Route No. 22 cars in Clark St. north to main entrance of park.

WHITE SOX PARK (COMISKEY PARK) (43)—West 35th St. and Shields Av. (3500 s.—333 w.). Home grounds of the Chicago American League baseball team. Take Clark-Wentworth or Through Route No. 22 cars in Clark St. south to 35th St. and Wentworth Av. Baseball park one block west.

BATHING BEACHES

On Chicago's lake front there are 22 miles of beaches. These beaches are well maintained and some 200 life guards are on duty. Locker facilities are provided at most of them for a small fee.

CALUMET PARK BEACH (52)—99th St. and Avenue E (3900 e.). Take No. 5 cars in Wabash Av. south to 99th St.

DIVERSEY BEACH (7)—Lincoln Park, at Diversey and the lake shore (2800 n.). Take Clark-Wentworth or Through Route No. 22 or No. 42 cars in Clark St., Broadway or Through Route No. 1 cars in State St. north to Clark St. and Diversey Parkway and walk east to Lake Michigan.

FULLERTON AVENUE BEACH (8)—Lincoln Park, at Fullerton and the lake shore (2400 n.). This beach is for children only. Take Clark-Wentworth or Through Route No. 22 or No. 42 cars in Clark St., Broadway or Through Route No. 1 cars in State St. north to Clark St. and Fullerton Parkway and walk east to Lake Michigan.

JACKSON PARK BEACH (48)—Lake shore at 63rd St. (6300 s.). Take southbound Stony Island-Wabash cars in Wabash Av. to 63rd St., or transfer east on 63rd St. from other north and south car lines.



One of Chicago's Many Beaches

MONTROSE-WILSON BEACH (3)—Montrose and lake shore (4400 n.). Take Broadway or Through Route No. 1 cars in State St. to Montrose, walk east to Lake Michigan.

OAK STREET BEACH (13)—Oak St. and lake shore (1000 n.). Take State, Broadway or Through Route No. 1 or No. 3 cars in State St. to Oak St. East two blocks.

OHIO STREET BEACH (14)—Foot of Ohio St. (600 n.). Take Stony Island-Wabash cars in Wabash Av. direct to beach, or Broadway, Through Route No. 1 or No. 3 cars in State St., Clark-Wentworth or Through Route No. 22 or No. 42 cars in Clark St., and transfer east on Chicago Av. to beach.

75TH STREET (RAINBOW) BEACH (50)—Lake shore at 75th St. (7500 s.). Take southbound Stony Island-Wabash, Through Route No. 4 or No. 5 cars in Wabash Av., State St. cars in State St., Clark-Wentworth or Through Route No. 22 cars in Clark St. to 75th St. and transfer east to beach.

79TH STREET (ROCKY LEDGE) BEACH (51)—79th St. and lake shore (7900 s.). Take southbound Stony Island-Wabash, Through Route No. 4 or No. 5 cars in Wabash Av., State St. cars in State St., Clark-Wentworth or Through Route No. 22 cars in Clark St. to 79th St. and transfer east to the beach.

67TH STREET BEACH—Lake shore at 67th St. (6700 s.). Take southbound Stony Island-Wabash cars in Wabash Av. to 67th St. and transfer east to terminal, or transfer east on 67th St. from other north and south car lines.

31ST STREET BEACH—Lake shore at 31st St. (3100 s.). Take Cottage Grove Av. cars in Wabash Av. to 31st St., walk east to Lake Michigan.

In addition to lake front beaches, there are a number of large swimming pools, one of the largest and most convenient of which is the Emmett Whealan pool at Devon and Milwaukee Av. (6400 n.—6358 w.). To reach this pool, take a Milwaukee Av. car at Madison and Dearborn and ride to the end of the line.

GOLF COURSES FOR VISITORS

There are low fee public golf courses at Jackson, Garfield, Lincoln, Marquette and Columbus Parks. See under PARKS for directions.

LAKE TRANSPORTATION

NAVY PIER (17)—Lake steamers leave from the pier at the foot of Grand Av. See Navy Pier under OTHER POINTS OF INTEREST for directions for reaching pier.

MICHIGAN AVENUE BRIDGE DOCK—Southeast corner Michigan Av. and Wacker Drive (100 e.—300 n.). Steamers leave for nearby Michigan and Wisconsin resorts. Also moonlight excursions. Take Stony Island-Wabash cars north in Wabash Av. to Wacker Drive, walk one block east.

LIBRARIES

CHICAGO PUBLIC LIBRARY (20)—Washington St., Michigan Av., and Randolph St. (100 n.—100 e.). Circulating library open 9 A. M. to 7 P. M. week days.

JOHN CRERAR LIBRARY—86 E. Randolph St. (150 n.). Open week days from 9 A. M. to 6 P. M. Admission free. This is a scientific reference library.

NEWBERRY LIBRARY—Clark St. and Walton Place (100 w.—900 n.). Open daily except Sundays and legal holidays from 9 A. M. to 10 P. M. Admission free. The library contains a fine collection of rare books and manuscripts. Take northbound Clark-Wentworth or Through Route No. 22 cars in Clark St. north to Oak St.

MANUFACTORIES AND INDUSTRIES

CENTRAL MANUFACTURING DISTRICT—Between Ashland Av., Morgan St., 35th St. and Pershing Rd. (1600 w. to 1000 w.—3500 s. to 3900 s.); also along Pershing Rd. between Ashland and Western Avs. This district contains about 250 nationally known manufacturing concerns. Take southbound Ashland Av. cars in State St. and transfer on 35th St.

UNION STOCK YARDS (44)—Between Pershing Rd., 47th St., Halsted St. and S. Ashland Av. (3900 s. to 4700 s.—800 w. to 1600 w.). The world-famous center of the packing industry. Take southbound Halsted St. cars in Clark St. or Wallace-Racine Av. cars in State St. direct to main entrance at Halsted and Root Sts.

MUSEUMS

ACADEMY OF SCIENCES (11)—Lincoln Park at Clark and Center Sts. (231 w.—2000 n.). A noted museum of natural history, open week days 9 A. M. to 5 P. M. and on Sundays from 1 P. M. to 5 P. M. Admission free. Take Broadway or Through Route No. 1 or No. 3 cars in State St., Clark-Wentworth or Through Route No. 22 cars in Clark St., or Lincoln Av. cars at La Salle and Madison Sts. direct to academy at Clark and Center Sts.

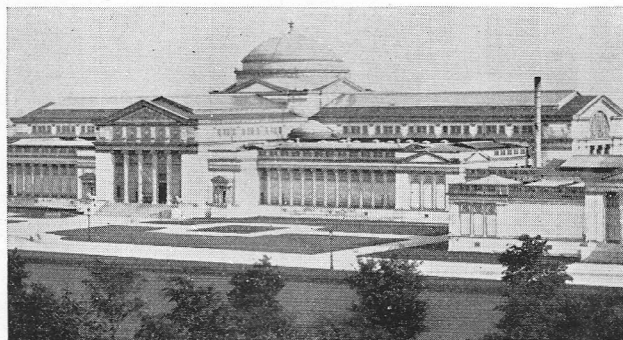
ADLER PLANETARIUM AND ASTRONOMICAL MUSEUM (36)—Lake Michigan at Roosevelt Rd. (1200 s.). Demonstrations with lectures at 11 A. M. and 3 P. M. on Mon., Wed., Thurs. and Sat.; at 11 A. M., 3 and 8 P. M. on Tues. and Fri.; at 3 and 4 P. M. on Sun. Admission free on Wed., Sat. and Sun. Admission 25 cents other days; children free mornings. Take any southbound car in Wabash, except cars marked Wabash-Harrison, or any southbound car in State St. or southbound car in Clark St., except those marked Clark-Downtown, and transfer east on Roosevelt Rd. to the terminal.

ART INSTITUTE OF CHICAGO (23)—Michigan Av. at Adams St. (100 e.—200 s.). Ranks among the best art galleries in the country and has the largest art school in the world. Open week days 9 A. M. to 5 P. M. from Sept. 1 to May 30; from 9 A. M. to 5:30 P. M. from June 1 to Aug. 31. Open Sun. from 12 M. to 5 P. M., except 5:30 P. M. is closing hour from June 1 to Aug. 31. Admission free Wed., Sat., Sun., and all legal holidays. Admission 25 cents other days.

CHICAGO HISTORICAL SOCIETY (12)—Clark St. at North Av. (600 w.—1600 n.). Story of American history from Columbus to World War arranged in period rooms. One of the finest Lincoln and pioneer collections in the country. Open week days from 9:30 A. M. to 5 P. M.; Sun. 1 P. M. to 6 P. M. Admission free Mon., Wed. and Fri. Admission 25 cents other days. Children admitted free at all times. Take northbound Clark-Wentworth or Through Route No. 22 cars in Clark St., or Broadway, Through Route No. 1 or No. 3 cars in State St. north to Lincoln Park at North Av.

FIELD MUSEUM OF NATURAL HISTORY (38)—Lake Michigan and Roosevelt Rd. (1200 s.). One of the most complete natural history museums in the world. Open daily at 9 A. M. Closing hour 4:30 P. M. during Nov., Dec., Jan., Feb. and Mar.; 5 P. M. in April, Sept. and Oct.; 6 P. M. in May, June, July and Aug. Admission free on Thurs., Sat., and Sun. Admission 25 cents other days. Free to children at all times. Take any southbound car in Wabash, except cars marked Wabash-Harrison, or any southbound car in State St. or southbound car in Clark St., except those marked Clark-Downtown, and transfer east on Roosevelt Rd. to the terminal.

ORIENTAL INSTITUTE (University of Chicago)—Corner of 58th St. and University Av. (5800 s.—1142 e.). Collections



Museum of Science and Industry

of original monuments and antiquities made by expeditions in the Near East. Open Mon. to Sat., incl., from 10 A. M. to 5 P. M., Sun. from 11 A. M. to 5 P. M., from July 1 to Nov. 30. Open Mon. to Fri., incl., from 1 to 5 P. M., Sat. and Sun. from 11 A. M. to 5 P. M., from Dec. 1 to June 30. Admission free. Take Through Route No. 1 cars in Wabash Av. to 55th St. and University Av., walk south to 58th St.

MUSEUM OF SCIENCE AND INDUSTRY (45)—57th St. and Lake Michigan (5700 s.), at the north end of Jackson Park. Founded by Julius Rosenwald. Extensive exhibits relating to scientific, engineering and industrial developments. Full-sized operating coal mine. Open 10 A. M. to 6 P. M. every day. Admission free except to mine. Admission to mine, adults 25 cents, children 10 cents. Take Stony Island Av. car in Wabash to 57th St., walk east to Museum.

PARKS

The park system of Chicago comprises more than 5,000 acres of land. There are 193 small parks and 15 larger parks, and 13 bathing beaches.

COLUMBUS PARK—Harrison St. and Central Av. (600 s.—5600 w.). Take Harrison-Central cars in Dearborn at Adams or Van Buren direct to park, or Madison-Austin cars to Central Av. Two blocks south to park.

DOUGLAS PARK—Between S. California and S. Albany Aves. and Roosevelt Rd. and 19th St. (2800 w. to 3100 w.—1200 s. to 1900 s.). Take Ogden Av. car at Dearborn and Washington and ride to California Av.

DOUGLAS MONUMENT PARK—Lake Park Av. and 35th St. (733 e.—3500 s.). A small park containing the tomb of Stephen A. Douglas. Take Cottage Grove Av. car in Wabash to 35th St. Park one block east.

GARFIELD PARK—Madison St. and Central Park Av. (0 n.—3600 w.). It is distinguished because of its beautiful gardens and conservatory. There are facilities for boating, golf and other sports. Take Madison St. cars at Madison and Dearborn or on Monroe St. west of Dearborn St. to park entrance, or Lake St. cars for conservatory.

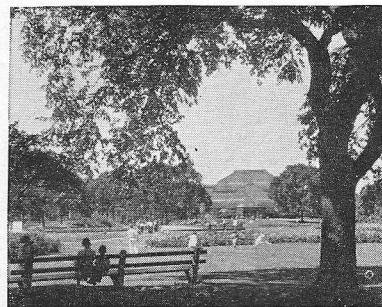
GRANT PARK—On the lake front between Roosevelt Rd. and Randolph St. (1200 s.—150 n.). In it are located the Art Institute, the Illinois Naval Reserve Armory and the Buckingham Fountain (see under OTHER POINTS OF INTEREST). One block east to park from Wabash Av. car line.

HUMBOLDT PARK—Between Augusta Blvd. and North Av. and California and Kedzie Aves. (1000 n. to 1600 n.—2800 w. to 3200 w.). Take Division St. car at Dearborn and Washington direct to park, or a Milwaukee Av. car at Dearborn and Madison Sts. to Division St. and transfer west to park, or any east and west car line to Kedzie Av.

and transfer north to park, or any north and south car line to North Av. and transfer west to park.

JACKSON PARK—63rd St. and Stony Island Av. (6300 s.—1600 e.). Here are located the Museum of Science and Industry, the Columbus Caravel, the Japanese gardens, and the Cahokia Courthouse, the oldest public building in the Mississippi Valley. Take southbound Stony Island-Wabash car in Wabash Av. to 63rd St., or transfer east on 63rd St. from other north and south car lines.

LINCOLN PARK—The park proper extends along the lake from North Av. to Foster Av. (1600 n.—5200 n.). In the



Scene in Lincoln Park

park are the Academy of Sciences (11); the zoo (10); the aquarium (10); Chicago Historical Society Museum (12) and a conservatory. There is a motor and sail boat harbor located at Belmont Av. Numerous statues are found along the walks and drives, among them the famous statue of Abraham Lincoln by

St. Gaudens. Take northbound Broadway, Through Route No. 1 or No. 3 cars in State St., Clark-Wentworth or Through Route No. 22 cars in Clark St., or Lincoln Av. cars at La Salle and Madison Sts.

MARQUETTE PARK—Kedzie and 67th St. (3200 w.—6700 s.). Take Madison, Van Buren, Harrison or Roosevelt Rd. cars to Kedzie Av. and transfer south to park (end of line); or take Cottage Grove Av., State St., Clark-Wentworth or Halsted St. cars south to 67th-69th St. line and transfer west to park (end of line).

PUBLIC BUILDINGS

CITY AND COUNTY BUILDING—Between Washington, Randolph, Clark and La Salle Sts. (100 n.—100 w.). In this building are the executive offices and courts of both the city and county governments.

CRIMINAL COURT BUILDING AND COUNTY JAIL—California Av. and 26th St. (2800 w.—2600 s.). Take Blue Island Av. cars in Dearborn St. at Adams or Monroe to 26th St. and California Av.

MAIN POST OFFICE BUILDING—Van Buren and Canal Sts. (400 s.—500 w.). The largest postal building in the world. Take Van Buren St. cars to the door.

UNITED STATES COURT HOUSE—Between Adams, Jackson, Clark and Dearborn (200 s.—100 w.). In this building are the federal courts and offices and post office departments.

RAILROAD STATIONS AND ELECTRIC TERMINALS

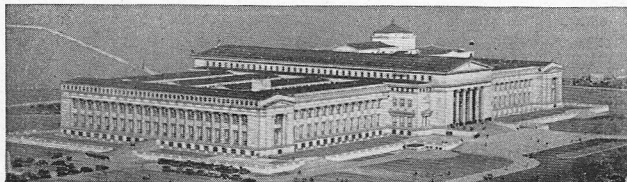
CHICAGO AURORA AND ELGIN WELLS STREET TERMINAL (27)—314 S. Wells St. (200 w.). Take any westbound car to Wells St., transfer to depot between Jackson Blvd. and Van Buren St.

CHICAGO NORTH SHORE & MILWAUKEE RAILROAD (25)—223 South Wabash Av. (50 e.). Take Wabash Av. cars to Adams St.

DEARBORN STATION (32)—Dearborn and Polk Sts. (50 w.—800 s.). Used by Atchison, Topeka & Santa Fe, Chicago & Eastern Illinois, Chicago & Western Indiana, Erie, Grand Trunk, Wabash and Monon Railroads. Take any southbound car in Clark St., except those marked Clark-Downtown, or in State St. to Polk St.

GRAND CENTRAL STATION (30)—Harrison and Wells Sts. (600 s.—200 w.). Used by Baltimore & Ohio, Soo Line, Chicago Great Western and Pere Marquette Railroads. Take Roosevelt Rd. cars at Dearborn and Adams Sts.; Harrison St. or Clybourn Av. cars in Harrison St. west to station, or any westbound car to Wells St. and transfer south to station at Harrison St.

ILLINOIS CENTRAL STATION (35)—Roosevelt Rd. and Michigan Av. (1200 s.—100 e.). Used by Illinois Central, Big Four, Chesapeake & Ohio and Michigan Central Railroads. Take any southbound car in Wabash Av. except cars marked Wabash-Harrison, to Roosevelt Rd., station one



Field Museum

block east; or any southbound car in State St., or southbound Clark St. cars, except those marked Clark-Downtown, to Roosevelt Rd. and transfer east to station.

LA SALLE STREET STATION (28)—Van Buren St. between La Salle and Sherman Sts. (400 s.—150 w.). Used by Chicago, Rock Island & Pacific, New York Central, and the Nickel Plate Railroads. Take any southbound car in Clark St. or Wells St. to Van Buren St., one block to station.

NORTH WESTERN STATION (22)—Madison St. between Canal and Clinton Sts. (0 n.—500 w.). Passenger terminal of the Chicago & North Western Railway. Take westbound Milwaukee Av. cars in Madison St. or westbound Madison St. cars in Monroe St. to station.

UNION STATION (24)—Canal St. between Adams St. and Jackson Blvd. (500 w.—200 s.). Used by the Chicago, Burlington & Quincy, Chicago & Alton, Chicago, Milwaukee, St. Paul & Pacific and Pennsylvania Railroads. Take westbound Harrison St. or Blue Island Av. cars in Adams St., or westbound Van Buren St. cars in Van Buren St. to Canal St.

STADIUMS AND COLISEUM

CHICAGO STADIUM (21)—Madison and Wood Sts. (0 n.—1800 w.). The largest indoor sports arena in the world, with a capacity of 25,000 persons. Take westbound Madison St. cars in Monroe St. direct to stadium.

COLISEUM (41)—1513 S. Wabash Av. (50 e.). An auditorium seating 14,000 persons. Take southbound Cottage Grove, Indiana, Stony Island-Wabash or Through Route No. 1 or No. 3 cars in Wabash Av. direct to coliseum.

SOLDIER FIELD STADIUM (40)—14th St. and the lake shore (1400 s.). Seating capacity 160,000 persons. Take southbound Clark St. cars, except those marked Clark-Downtown, or southbound cars in Wabash Av., except cars marked Wabash-Harrison, and transfer to eastbound Roosevelt Rd. cars to the terminal. Walk one block south to entrance.

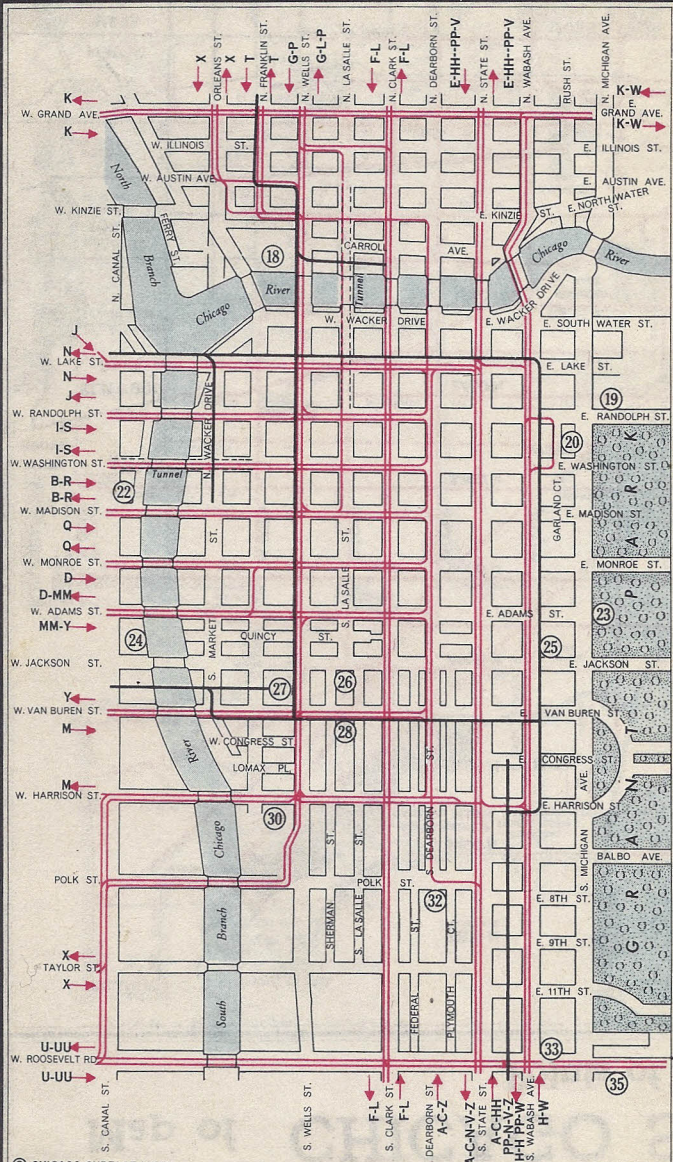
UNIVERSITIES AND COLLEGES

ARMOUR INSTITUTE OF TECHNOLOGY—3300 Federal St. (3300 s.—70 w.). Take Clark-Wentworth or Through Route No. 22 cars in Clark St., or State St. cars south to 33rd St.

DE PAUL UNIVERSITY (9)—1010 Webster Av. (1010 w.—2200 n.). Take Lincoln Av. cars at La Salle and Madison Sts., or Through Route No. 3 cars in State St., north to Webster and transfer west on Webster-Racine Av. cars.

CENTRAL BUSINESS DISTRICT

Showing Chicago Surface Lines Routes and Points of General Interest



MAP OF ENTIRE SYSTEM ON REVERSE SIDE

Key to POINTS OF INTEREST

- | | |
|---|---|
| RAILROAD STATIONS | GENERAL POINTS OF INTEREST |
| 27 Chicago, Aurora and Elgin Station | 26 Board of Trade Bldg. (Observation Tower) |
| 25 Chicago North Shore and Milwaukee Station | 23 Chicago Art Institute |
| 22 Chicago and North Western Station | 18 Merchandise Mart |
| 19 Chicago South Shore and South Bend Station | 20 Public Library |
| 32 Dearborn Station | |
| 30 Grand Central Station | |
| 35 Illinois Central Station | |
| 28 La Salle Street Station | |
| 33 Union Bus Station | |
| 24 Union Station | |
- FOR OTHER POINTS OF INTEREST SEE LARGE MAP ON REVERSE SIDE.

Guide for Tracing Routes Through CENTRAL BUSINESS DISTRICT On Map on Opposite Page

NAME OF ROUTE	NAME OF ROUTE
A Archer	N State-Lake T.R. 16
B Armitage D.T.	P Lincoln-Wells
C Ashland D.T.	PP Lincoln-Indiana T.R. 3
D Blue Island	Q Madison
E Broadway	R Milwaukee
F Clark-Wentworth	S Ogden
G Clybourn	T Riverview-Larr.
H Cottage Grove	U Roosevelt
HH Cottage Grove-Broadway T.R. 1	UU Roosevelt D.T.
I Division D.T.	V State
J Elston	W Stony Island
K Grand	X Taylor-Sedgwick-Sheffield
L Halsted D.T.	Y Van Buren
M Harrison	Z Wallace-Racine
MM Harrison-Adams	

D.T. Indicates Downtown Branch

CHICAGO RAPID TRANSIT SYSTEM INDICATED BY HEAVY BLACK LINE

LEWIS INSTITUTE—Madison at Damen Av. (0 n.—2000 w.). Take Madison St. cars in Monroe St. west to Damen.

LOYOLA UNIVERSITY (2)—Loyola Av. and Sheridan Rd. (6534 n.—1148 w.). Take Broadway cars in State St. to Sheridan Rd. and walk north two blocks.

NORTHWESTERN UNIVERSITY—McKINLOCK CAMPUS (15)—Chicago Av. and Lake Shore Drive (800 n.—500 e.). Medical, dental, law and commercial schools of Northwestern University. Take Broadway, State or Through Route No. 1 or No. 3 cars in State St. north to Chicago Av. and transfer east. Northwestern University proper is located in Evanston on Sheridan Road and the lake front.

UNIVERSITY OF CHICAGO (46)—58th and Ellis Av. (5800 s.—958 e.). Take Through Route No. 1 cars in Wabash Av. to 55th St. and Ellis Av. University grounds and buildings two blocks south. Or take Cottage Grove Through Route No. 4 or No. 5 cars in Wabash Av. south to 57th St. Grounds and buildings two blocks east.

ZOOS

LINCOLN PARK ZOO (10)—Located in Lincoln Park. Take northbound Broadway, Through Route No. 1 or No. 3 cars in State St., Clark-Wentworth or Through Route No. 22 cars in Clark St., or Lincoln Av. cars at La Salle and Madison St. to Center St.

CHICAGO ZOOLOGICAL PARK (39)

—Located between the Des Plaines River and Salt Creek at Brookfield, 14 miles from the Chicago central business district. Buildings open at 10 A. M. every day. Buildings close at 6 P. M. during May, June, July, Aug. and Sept.; at 5 P. M. during Oct. and April; at 4 P. M. during Nov., Dec., Jan., Feb. and March. Admission 25 cents Mon., Tues., Wed. and Fri. Admission free other days. Take any through route southbound car to 22nd St. (Cermak Rd.), transfer west on 22nd St. to Kenton Av., and board a LaGrange electric line car. The fare on the electric line is 10 cents.



At the Zoo

OTHER POINTS OF INTEREST

AMERICAN FURNITURE MART (16)—666 Lake Shore Drive (666 n.—500 e.). This building is devoted exclusively to furniture and furniture display. Take any northbound car in Clark St. to Chicago Av. and transfer east direct to the building; or take any northbound car in State St. except Through Route No. 16 and transfer east in Chicago Av. direct to building.

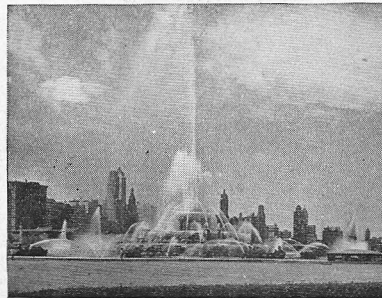
BUCKINGHAM FOUNTAIN (29)—In Grant Park at the foot of Congress St. (500 s.). The largest and one of the most beautiful fountains in the world. It has several varieties of displays and is illuminated several nights each week. Walk east from street cars on Wabash Av. at Congress St.

CHINATOWN (41½)—Wentworth Av. at Cermak Rd. (200 w.—2200 s.). A district inhabited almost entirely by Chinese and devoted to their business and professional needs. A Chinese city hall, stores and restaurants attract visitors. Take southbound Clark-Wentworth or Through Route No. 22 cars in Clark St. to Cermak Rd., or southbound State St. cars in State St. and transfer west on Cermak Rd. to Wentworth.

CHICAGO WATER TOWER (15½)—Michigan and Chicago Aves. (100 e.—800 n.). An old historic landmark built before the fire of 1871. Take any northbound car in State St. except Through Route No. 16, or northbound Clark St. car to Chicago Av., transfer east to Michigan Av.

ELKS' MEMORIAL (6)—Lake View Av. and Diversey Parkway (400 w.—2800 n.). Open 10 A. M. to 5 P. M. every day. Admission free. Take Clark-Wentworth or Through Route No. 22 or No. 42 cars in Clark St., Broadway or Through Route No. 1 cars in State St. north to Clark St. and Diversey Parkway and walk east to Lake View Av.

GHETTO (37)—Maxwell between Halsted and Jefferson Sts. (1320 s.—800 w.).



Buckingham Fountain

The market is typical of the Russian Jewish customs. It is closed on Saturday, the Jewish Sabbath. Take Roosevelt Rd. cars at Dearborn and Adams Sts. to Jefferson St. and walk south; or Madison St., Blue Island, Van Buren or Harrison St. cars to Halsted St. and transfer south to Maxwell St.

HULL HOUSE (31)—Halsted and Polk Sts. (800 w.—800 s.). Noted social settlement founded by Miss Jane Addams. Open to visitors daily, by appointment, from 10 A. M. to 10 P. M. Take Madison St., Van Buren St., Blue Island Av. or Harrison St. cars west to Halsted and transfer south to entrance at Polk St.

LINDBERGH BEACON (13½)—On the Palmolive Building, Michigan Av. and Walton Place (100 e.—921 n.). This aerial beacon is considered the most powerful ever made. It was presented to the city by Colonel Sperry in commemoration of Colonel Lindbergh's trans-Atlantic flight. Take any northbound car in State St. except Through Route No. 16, or northbound Clark St. cars to Chicago Av., transfer east to Michigan and walk two blocks north.

MERCHANDISE MART (18)—Wells Street and the north bank of the Chicago River (200 w.—340 n.). This building, devoted to wholesale sales quarters and merchandise displays, has nearly 92 acres of floor space. Take Ravenswood-Rosehill cars at La Salle and Madison or Madison and Wells; Clybourn Av. or Taylor-Sedgwick cars in Wells St., or Riverview-Larrabee cars at Dearborn and Randolph or Wells and Randolph direct to the mart.

NAVY PIER (17)—Extending 3,000 feet into the lake at the end of Grand Av. (500 n.). The pier is justly popular as a recreation center and lake steamer landing. During the season band concerts and dancing. Take northbound Stony Island Av. cars in Wabash Av. direct to pier, or take northbound Through Route No. 1 or No. 3, Broadway or State St. cars, except Through Route No. 16, in State St., Clark-Wentworth, Halsted St. or Through Route No. 22 cars in Clark St., or Lincoln Av. cars at La Salle and Madison Sts. north to Grand Av. or Chicago Av. and transfer east to Navy Pier.



Merchandise Mart

CHICAGO SURFACE LINES ROUTES

And Instructions for Use of Surface- Elevated Transfers

Below are listed alphabetically all of the routes of the Chicago Surface Lines, describing the operation of street cars or buses from one end of the line to the other. The lines are shown on the folder map in this booklet.

The fare on the Surface Lines is 7 cents with free transfers issued at the time fare is paid. Transfers are good as long as the passenger is going in the same general direction and uses the most direct and reasonable route.

Transfers between the Surface Lines and the Elevated (Chicago Rapid Transit System) are allowed at 55 Elevated transfer stations, indicated on the accompanying map. These transfers can be made only from Surface Lines tributary to the stations.

Transfers to the Elevated are issued on the Surface Lines on the payment of a 10 cent cash fare and only at the time of paying the fare. Passengers unfamiliar with the system should ask the conductor at what station they will be permitted to transfer. These transfers are good for additional rides on the Surface Lines if they are required to reach the proper Elevated transfer station. It is accepted as fare on the Elevated at the proper station, and may be retained for additional rides on the Surface Lines if these are required to reach the passenger's destination. The transfers must be time-stamped by passengers in the automatic machines provided for the purpose at the Elevated station where the passenger again transfers to the Surface Lines.

Transfers from the Elevated to the Surface Lines will be issued by the agent on the payment of a 10 cent fare and at the time of paying the fare. These transfers, when time-stamped at the transfer station, are accepted as fare on tributary Surface Lines.

CHICAGO SURFACE LINES ROUTES

A description of all Surface Lines routes follows. The names of routes entering and leaving the downtown business district are shown in heavy type.

ARCHER-SOUTH CICERO (Car and Bus Line)—Cars run from State and Polk Sts. w. to Dearborn, n. to Lake, e. to State, s. to Archer, sw. to Cicero. Buses run on Archer sw. from Cicero to Harlem.

ARCHER-38TH STREET—From State and Polk Sts. w. to Dearborn, n. to Lake, e. to State, s. to Archer, sw. to 38th, w. to Central Park.

ARMITAGE-CENTER—From Grand and Armitage Aves. e. to Paulina, s. to Cortland, e. to Racine, n. to Center, e. to Clark.

ASHLAND AVENUE (Through Route No. 9)—From 95th St. and Ashland Av. n. to Roosevelt, w. to Paulina, n. to Lake, e. to Ashland, n. to Cortland, e. to Southport, n. to Clark.

ASHLAND (NORTH)—From Ashland Av. and Irving Pk. Blvd. s. to Clybourn.

ASHLAND-DOWNTOWN—From State and Polk Sts. w. to Dearborn, n. to Lake, e. to State, s. to Archer, sw. to Ashland, s. to 95th.

BELMONT AVENUE (Car and Bus Line)—Cars run from Halsted St. and Belmont Av. w. to Central. Buses run on Belmont w. from Central to Pacific.

BLUE ISLAND AVENUE—From Adams and Clinton Sts. n. to Monroe, e. to Dearborn, s. to Adams, w. to Clinton, s. to Harrison, w. to Blue Island, sw. to 26th and Western, w. to Kenton.

BROADWAY-DEVON—From State and Lake Sts. e. to Wabash, s. to Harrison, w. to State, n. to Division, w. to Clark, n. and nw. to Broadway, n. and nw. to Devon, w. to Kedzie.

CENTRAL AVENUE (Bus Line)—From Lexington St. and Central Av. n. to Milwaukee.

CERMAK ROAD (22nd St.)—From Burnham Park opposite 18th St. s. and w. to South Park Way and Silverton Way, nw. to Cermak, w. to Kenton.

CERMAK ROAD-LAWNDALE—From Cermak Rd. and Calumet Av. w. to Kedzie, s. to 25th, w. to Lawndale, s. to 33rd.

CHICAGO AVENUE—From Lake Shore Drive and Grand Av. w. and n. to Chicago, w. to Austin.

CICERO AVENUE—From Cicero Av. and 25th St. n. to Montrose.

CICERO AVENUE (SOUTH)—From Archer and Cicero Aves. s. to 63rd St.

CLARK-WENTWORTH (Through Route No. 22)—From Howard and Clark Sts. se. and s. to Archer, sw. to Wentworth, s. to Vincennes, w. to 81st, w. to Halsted.

Note: Northbound cars operate n. on Wentworth, e. on Cermak, and n. on Clark. Southbound cars operate s. on Clark, sw. on Archer, and s. on Wentworth.

CLYBOURN AVENUE—From State and Harrison Sts. w. to Wells, n. to Division, w. to Clybourn, nw. to Belmont and Western, n. to Roscoe.

COTTAGE GROVE (Through Route No. 5)—From Randolph St. and Wabash Av. s. to 18th, e. to Indiana, s. to Cermak and Cottage Grove, se. and s. to South Chicago and 71st, se. on South Chicago to 91st, e. to Commercial, s. to 95th, e. to Ewing, s. to 108th.

COTTAGE GROVE-BROADWAY (Through Route No. 1)—From 56th St. and Lake Park Av. n. to 55th, w. to Cottage Grove, n. and nw. to Cermak and Indiana, n. to 18th, w. to Wabash, n. to Harrison, w. to State, n. to Division, w. to Clark, n. and nw. to Broadway, n. and nw. to Devon, w. to Kedzie.

Note: Northbound cars operate n. on Wabash, w. on Harrison, and n. on State. Southbound cars operate s. on State, e. on Lake, and s. on Wabash.

COTTAGE GROVE (Through Route No. 4)—From Randolph St. and Wabash Av. s. to 18th, e. to Indiana, s. to Cermak and Cottage Grove, se. and s. to 115th.

DAMEN AVENUE (NORTH)—From Blue Island and Damen Aves. n. to Fullerton.

DAMEN AVENUE (SOUTH)—From Damen Av. and 47th St. s. to 74th.

DIVERSEY AVENUE (Bus Line)—From Diversey, Western and Elston Aves. w. to Harlem.

DIVISION STREET-DOWNTOWN—From Randolph and Desplaines Sts. e. to Dearborn, s. to Washington, w. to Desplaines, n. to Milwaukee, nw. to Division, w. to Mozart.

DIVISION STREET (WEST)—From Division St. and Grand Av. w. to Austin.

DIVISION STREET (EAST)—From Division and Wells Sts. w. to Mozart.

ELSTON AVENUE (Car and Bus Line)—Cars run from Milwaukee Av. and Clinton St. s. to Lake, e. to Dearborn, s. to Randolph, w. to Clinton, n. to Milwaukee, n. and nw. to Elston, n. and nw. to Lawrence. Buses run on Elston nw. from Lawrence to Milwaukee.

EWING-BRANDON—From 108th St. and Ewing Av. s. to 118th, w. to Burley, s. to 122nd, sw. to Brandon, s. to Brainard and 136th.

FULLERTON AVENUE—From Fullerton Av., Lincoln Av. and Halsted St. w. to Central.

FULTON-21st STREET—From Fulton St. and Western Av. e. to Morgan, s. to Monroe, e. to Clinton, s. to Harrison, e. to Canal, s. to Canalport, sw. to Halsted, s. to 21st, w. to Marshall.

GRAND AVENUE—From Grand Av. and Lake Michigan w. and nw. to Harlem.

HALSTED-DOWNTOWN (Through Route No. 42)—From Waveland Av. and Broadway se. to Clark, se. and s. to Archer, sw. to Halsted, s. to Summit, sw. to Vincennes, sw. to Monterey, nw. to 111th, w. to Sacramento.

HALSTED STREET (Through Route No. 8)—From Halsted and Grace Sts. s. to Summit, sw. to Vincennes, sw. to Monterey, nw. to 111th, w. to Sacramento.

HALSTED STREET (Through Route No. 18)—From Halsted and Grace Sts. s. to 26th.

HALSTED STREET EXTENSION (SOUTH)—From 111th St. and Vincennes Av. sw. to 119th.

HAMMOND (IND.)—From 63rd St. and South Park Av. s. to South Chicago, se. to 92nd, e. to Ewing, se. and s. to Indianapolis, se. to State Line, thence to Hammond, Ind.

HARRISON-ADAMS—From Adams and Franklin Sts. n. to Monroe, e. to Dearborn, s. to Adams, w. to Racine, s. to Harrison, w. to Central.

HARRISON STREET—From Harrison and Clinton Sts. n. to Van Buren, e. to Dearborn, s. to Harrison, w. to Central.

HIGGINS AVENUE (Bus Line)—From Higgins Av. and Gale St. se. to Long, s. to Lawrence, w. to Linder, n. to Higgins, nw. to Canfield.

INDIANA-LINCOLN (Through Route No. 3)—See Lincoln-Indiana (Through Route No. 3).

IRVING PARK BLVD. (Car and Bus Line)—Cars run from Irving Park Blvd. and Broadway w. to Neenah. Buses run on Irving Park Blvd. w. from Neenah to Pacific.

KEDZIE AVENUE (Through Route No. 17)—From Bryn Mawr and Kedzie Aves. s. to Milwaukee, se. to California, s. to Chicago, w. to Kedzie, s. to 67th.

KEDZIE-CALIFORNIA—From Roscoe St. and California Av. s. to Chicago, w. to Kedzie, s. to 67th.

KIMBALL AVENUE (Bus Line)—From Leland and Kimball Avs. n. to Peterson.

LAKE STREET—From Lake St. and Austin Blvd. e. to State, s. to Van Buren.

Note: This service is maintained only after 6:00 P. M. on week days, after 3:00 P. M. on Saturdays, and all day on Sundays and holidays. See State-Lake (Through Route No. 16) for other service.

LARAMIE AVENUE—From Lake St. and Laramie Av. s. to Harrison.

LAWRENCE AVENUE—From Broadway and Lawrence Av. w. to Austin.

LINCOLN-INDIANA (Through Route No. 3)—From Lincoln and Peterson Avs. se. to Center, e. to Clark, se. and s. to Division, e. to State, s. to Lake, e. to Wabash, s. to Cermak, e. to Indiana, s. to 51st.

Note: Southbound cars operate s. on State St., e. on Lake, and s. on Wabash. Northbound cars operate n. on Wabash Av., w. on Harrison, and n. on State. Short line service during A. M. and P. M. rush hours as follows: From Wells and Illinois Sts. e. to La Salle, s. to Madison, w. to Wells, n. to Clark, nw. to Center, w. to Lincoln, nw. to Peterson.

LINCOLN-ROSEHILL—From Wells and Illinois Sts. e. to La Salle, s. to Madison, w. to Wells, n. to Clark, nw. to Center, w. to Lincoln, nw. to Damen, n. to Balmoral, e. to Ravenswood, n. to Cemetery Drive.

MADISON STREET—From Madison and Clinton Sts. e. to Dearborn, s. to Monroe, w. to Clinton, n. to Madison, w. to Austin Blvd.

MADISON-FIFTH AVENUE—From Madison and Clinton Sts. e. to Dearborn, s. to Monroe, w. to Clinton, n. to Madison, w. to 5th Av., sw. to Pulaski Rd.

MILWAUKEE AVENUE—From Washington and Desplaines Sts. e. to Dearborn, s. to Madison, w. to Clinton, n. to Milwaukee, nw. to Devon.

MILWAUKEE-ARMITAGE—From Washington and Desplaines Sts. e. to Dearborn, s. to Madison, w. to Clinton, n. to Milwaukee, nw. to Armitage, w. to Leclaire at Grand.

MONTROSE AVENUE (Car and Bus Line)—Cars run from Broadway and Montrose Av. w. to Milwaukee. Buses run on Montrose w. from Milwaukee to Narragansett.

MORGAN-RACINE-SANGAMON (Through Route No. 23)—From Ashland Av. and Erie St. e. to Racine, s. to Austin, e. to Sangamon, s. to Adams, w. to Racine, s. to 21st, w. to Throop, s. and se. to 31st, w. to Morgan, s. to Pershing Rd.

NARRAGANSETT AVENUE (Bus Line)—From Narragansett and Wabansia Avs. e. to Mobile, s. to North, w. to Narragansett, n. to Irving Park Blvd.

NORTH AVENUE—From North Av. and Clark St. w. to Narragansett.

NORTHWEST HIGHWAY (Bus Line)—From Milwaukee Av. and Gale St. se. to Higgins, nw. to Gale, e. to Milwaukee, nw. to Northwest Highway, nw. to Ozark.

OGDEN AVENUE—From Randolph and Desplaines Sts. e. to Dearborn, s. to Washington, w. to Desplaines, n. to Randolph, w. to Ogden, sw. to Cicero, n. to 25th, w. to Laramie.

PERSHING ROAD (39th St.) (EAST)—From Cottage Grove Av. and Pershing Rd. w. to Wallace, s. to Root, w. to Halsted.

PERSHING ROAD (39th St.) (WEST)—From Pershing Rd. and Ashland Av. w. to Western.

PULASKI ROAD—From Pulaski Rd. and Bryn Mawr Av. s. to 31st, w. to Kostner.

RIVERDALE—From 119th St. and Michigan Av. s. to 127th, e. to Indiana, sw. to 134th, e. to Indiana, s. to Leyden, se. to 138th.

RIVERVIEW-LARRABEE—From Franklin and Kinzie Sts. e. to Dearborn, s. to Randolph, w. to Wells, n. to Kinzie, w. to Franklin, n. to Erie, w. to Kingsbury, n. to Chicago, w. to Larrabee, n. to Lincoln, nw. to Belmont, w. to Damen, n. to Roscoe, w. to Western.

ROOSEVELT ROAD-DOWNTOWN—From Wells and Harrison Sts. n. to Adams, e. to Dearborn, s. to Van Buren, w. to Wells, s. to Harrison, w. to Canal, s. to Roosevelt, w. to Austin.

ROOSEVELT ROAD—From Austin Blvd. and Roosevelt Rd. e. to Grand Park.

SOUTH DEERING-SOUTH CHICAGO—From 63rd St. and Dorchester Av. s. to 54th, e. to Stony Island, s. to 73rd, e. to Exchange, se. to 75th, e. to Coles, se. to 79th, e. to Brandon, s. to 83rd, e. to Burley, s. to 87th, e. to Buffalo, s. to 92nd, w. to Commercial, s. and sw. to 104th, w. to Torrence, s. to 124th.

STATE STREET—From Wells and Division Sts. e. to State, s. to 95th, e. to Michigan, s. to 119th, w. to Morgan, s. to 120th, e. to Halsted, n. to 119th.

STATE-LAKE (Through Route No. 16)—From Lake St. and Austin Blvd. e. to State, s. to 79th.

Note: This service is maintained between 6:00 A. M. and 6:00 P. M. on week days and between 6:00 A. M. and 3:00 P. M. on Saturdays. Not operated on Sundays and holidays. See under Lake Street for local service on Lake St.

STONY ISLAND AVENUE—From Lake Michigan and Grand Av. w. to Wabash, s. to 18th, e. to Indiana, s. to Cermak and Cottage Grove, se. and s. to 47th, e. to Lake Park, se. to 56th, e. to Stony Island, s. to 93rd.

TAYLOR-SEDGWICK-SHEFFIELD—Northbound from Taylor St. and Western Av. e. to Canal, n. to Polk, e. to Wells, n. to Kinzie, w. to Orleans, n. to Division, w. to Sedgwick, n. to Lincoln, nw. to Sheffield, n. to Clark. Southbound on Sheffield Av. from Clark to Lincoln, se. to Sedgwick, s. to Chicago, e. to Orleans, s. to Austin, e. to Wells, s. to Polk, w. to Canal, s. to Taylor, w. to Western.

VAN BUREN STREET—From Van Buren and Clinton Sts. n. to Adams, e. to Dearborn, s. to Van Buren, w. to Kedzie.

WALLACE-RACINE AVENUE—From State and Polk Sts. w. to Dearborn, n. to Lake, e. to State, s. to Archer, sw. to Canal, s. to 29th, w. to Wallace, s. to Pershing, w. to Halsted, s. to 47th, w. to Racine, s. to 87th.

WEBSTER-RACINE AVENUE—From Fullerton and Racine Avs. s. to Webster, e. to Lincoln and Larrabee.

WESTERN AVENUE (Through Route No. 10)—From Western Av. and 111th n. to Howard.

WHITING AND EAST CHICAGO—From 63rd St. and South Park Av. s. to South Chicago, se. to 91st, e. to Commercial, s. to 95th, e. to Ewing, s. to 106th, e. to Indianapolis (State Line), thence to Whiting and East Chicago, Ind.

WINDSOR PARK (SOUTH CHICAGO)—From 63rd St. and Dorchester Av. to 64th, e. to Stony Island, s. to 73rd, e. to Exchange, se. to 75th, e. to Coles, se. to 79th, w. to Exchange, s. to Commercial, s. to South Chicago, se. to 93rd, e. to Baltimore, n. to 91st, w. to Commercial.

14th-16th STREET—From Roosevelt Rd. and Michigan Av. w. to Canal, s. to 14th, w. to Damen, n. to Roosevelt, w. to Kedzie, s. to 16th, w. to Kenton.

18th STREET—From State and 18th Sts. w. to Leavitt, s. to Blue Island.

22nd STREET—See Cermak Rd.

26th STREET—From Cottage Grove Av. and 26th St. w. to Halsted.

31st STREET—From Lake Park Av. and the Illinois Central Railroad w. on 31st St. to Pitney Ct., nw. to Archer.

35th STREET—From Cottage Grove Av. and 35th St. w. to California, s. to 36th, w. to Kedzie.

43rd-ROOT STREET—From Oakenwald Av. and 43rd St. w. to State, n. to Root, w. to Halsted.

47th STREET (Car and Bus Line)—Cars run from Lake Park Av. and 47th St. w. to Kedzie. Buses run on 47th St. w. from Kedzie to Kostner.

51st-55th STREET—From 55th St. and Harper Av. s. to 56th, e. to Lake Park, n. to 55th, w. to Cottage Grove, n. to 51st, w. to Central Park.

59th-61st STREET—From Blackstone and 60th St. s. and sw. to 61st, w. to State, n. to 59th, w. to Central Park.

63rd STREET—From Stony Island Av. and 64th St. w. to Harper, n. to 63rd, w. to Central, s. to 63rd Pl., w. to Oak Park.

63rd STREET (WEST)—From 63rd Pl. and Oak Park Av. w. and n. to Archer.

67th-69th STREET—From 71st St. and California Av. e. to Western, n. to 69th, e. to Keefe, ne. to Rhodes, n. to 67th, e. to South Shore Drive.

71st STREET (Car and Bus Line)—Cars run from Vincennes Av. and 73rd St. ne. to 71st, e. to Cottage Grove. Buses run from Cottage Grove Av. and 71st St. e. to Exchange, se. to 72nd, ne. to Lake Michigan.

75th STREET—From 74th St. and Ashland Av. e. to Eggleston, s. to 75th, e. and ne. to Lake Michigan.

79th STREET—From 79th St. and Western Av. e. to Lake Michigan.

87th STREET (EAST)—From Commercial Av. and 87th St. w. to Stony Island.

87th STREET (WEST) (Car and Bus Line)—Cars run from Ingle-side Av. and 87th St. w. to Vincennes. Buses run on 87th St. w. from Vincennes to Damen.

93rd-95th STREET (Car and Bus Line)—Cars run from 89th St. and the Strand w. to Buffalo, s. to 92nd, w. to Exchange, sw. to 93rd, w. to Cottage Grove, s. to 95th, w. to Lafayette. Buses run on 95th St. w. from Lafayette to Western.

103rd STREET (Car and Bus Line)—Cars run from 103rd St. and Cottage Grove Av. w. to Vincennes. Buses run on 103rd St. w. from Vincennes to Western.

106th STREET—From 106th St. and Torrence Av. e. to Indianapolis.

111th STREET—From 111th St. and Vincennes Av. e. to Cottage Grove.

115th STREET—From Cottage Grove and 115th St. w. to Halsted.

119th STREET—From 119th and Morgan Sts. w. to Vincennes.

SURFACE LINES

Serve

ALL CHICAGO

