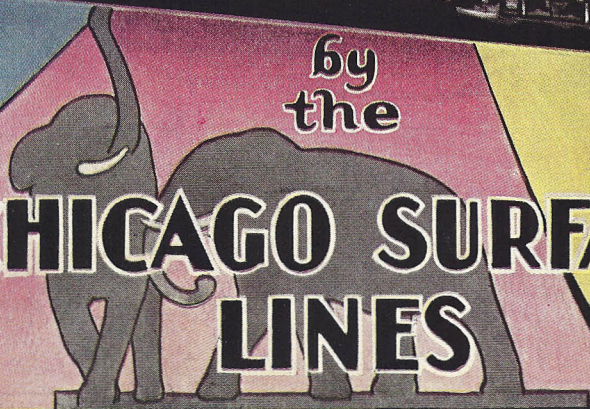


# Seeing Greater **CHICAGO**



by  
the

# **CHICAGO SURFACE LINES**



SEEING  
GREATER CHICAGO  
BY THE  
CHICAGO SURFACE  
LINES

A SIGHTSEEING  
AND  
ROUTE GUIDE

FOR INFORMATION  
*and*  
LOST ARTICLES

For information on how to reach any point in the city by surface lines, or for special routings not covered in this book, call Dearborn 8800.

Call this number also in inquiring for articles lost on street cars.

PUBLISHED BY THE  
CHICAGO SURFACE LINES  
231 SOUTH LA SALLE STREET

1929



*Looking north on Michigan Boulevard*

## CHICAGO

THE city of Chicago is the second largest metropolis in the United States and the fourth largest in the world. In population it exceeds each of thirty-seven of the forty-eight states in the union.

It leads the world in packing-house products, in the manufacture of farm machinery, telephone instruments, furniture, band instruments, pianos, household, electrical and gas devices, and is the greatest center for the manufacture of men's clothing. It is the world's greatest railroad center, the largest lumber market, grain market, and food distributing center. It entertains more conventions annually than any other city in the world, has the greatest number of small parks and playgrounds, the largest outer parks and forest preserve system and the greatest mileage of boulevards. It is the nation's leading industrial center, produces a greater variety of manufactured products than any other city and is the first city in the nation in the manufacture of products for export. It has the greatest produce market in America and the largest retail department stores in the world.

It is the financial center of the Middle-west. Its population increases at the rate of 70,000 persons annually.

### LARGEST STREET RAILWAY SYSTEM

This great metropolis is served by the largest street railway system in the world. The Chicago Surface Lines, with 1,082 miles of track, 3,739 cars and 16,500 employes provide more than 1,600,000,000 rides annually, carrying three-fourths of the entire local transportation load.

A gridiron of tracks located generally on the half-section lines serves every part of the city. A universal transfer system, permitting unlimited free transfers as long as the passenger is traveling in the same general direction, makes this service the greatest transportation bargain to be found anywhere. The average ride for one fare of seven cents is more than four miles.

To the visitor, Chicago is replete with interest. The beautiful parks, extensive bathing beaches, scientific and art museums, educational institutions, the great industries, well-stocked shops and hundreds of statues and historic spots contribute to the value of the city for vacation purposes. The summer climate with its cool lake breezes and clear warm days is as fine as can be found anywhere. The well-equipped hotels and restaurants, first-class theaters and magnificent motion picture houses afford advantages not found elsewhere.

### NUMBERING SYSTEM

Madison Street is the north and south and State Street the east and west dividing line of the numbering system of the city. Eight hundred numbers are assigned to each mile, or one hundred to each one-eighth of a mile except for the first three miles south

of Madison where there are twelve hundred numbers for the first mile, ten hundred for the second and nine hundred for the third mile.

In this booklet will be found a list of some of the important points of interest and directions for reaching them by the Chicago Surface Lines. There is also included a complete route guide of the Surface Lines and a map showing the system with points of interest indicated.

In the outlying sections the Chicago Surface Lines use the "skip-stop" plan in order to provide faster service. Stops are made on an average of eight to a mile and stopping places are indicated by white bands painted on the poles supporting the trolley wires. The average speed of Chicago Surface Lines cars is the highest of any large city street car system.

#### FOR FURTHER INFORMATION

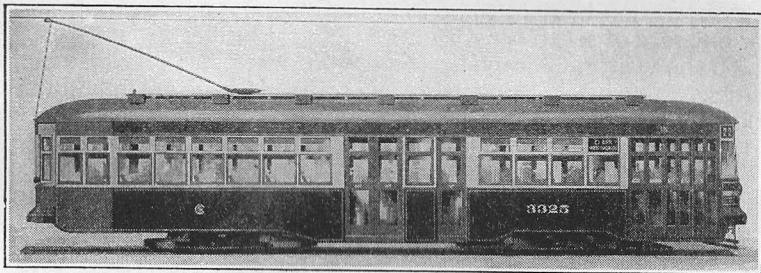
The visitor in the city is urged to call the company's offices, Dearborn 8800, for any information not found in this book or to ask any of the uniformed supervisors at busy intersections of the city.

For lost articles call the company offices at the above number, giving as nearly as possible the time when the article was lost and car line on which the passenger was riding. Articles unclaimed in thirty days are returned to the finder.

All directions for reaching points of interest given in this book presume starting from the central business district or "Loop."

#### CHICAGO SURFACE LINES

231 South LaSalle Street  
Dearborn 8800



Type of New Car Equipment of Chicago Surface Lines

## WHAT TO SEE IN CHICAGO

Principal points of interest in Chicago, classified under appropriate headings alphabetically arranged, are listed below. Directions for reaching them by the Chicago Surface Lines presume starting from the "Loop" district. Numbers in parentheses refer to locations on the map in the back of this book.

#### AMUSEMENT PARKS

**RIVERVIEW PARK (5)**—Belmont and Western Avenues. A large summer amusement park with many attractions and space for picnicking purposes. Dancing in the winter. Take Riverview-Larrabee cars at Dearborn and Randolph Streets, or Clybourn Avenue cars in Wells Street direct to the park. By transfer, north on Western Avenue or west on Belmont Avenue direct to the park.

**WHITE CITY (57)**—63rd Street and South Park Avenue. A large summer amusement park with many attractions. Dancing and roller skating in winter. Take southbound Clark-Wentworth or Through Route No. 22 cars in Clark Street, or State Street cars in State Street south to 63rd Street and transfer east to park; Cottage Grove Avenue cars in Wabash Avenue south to 63rd Street and transfer west to park.

#### BASEBALL PARKS

**CUBS PARK (4)**—Clark and Addison Streets. Home grounds of the Chicago National League baseball team. Take Clark-Wentworth or Through Route No. 22 cars in Clark Street, north to main entrance of park.

**WHITE SOX PARK (42)**—West 35th Street and Shields Avenue. Home grounds of the Chicago American League baseball team. Take Clark-Wentworth or Through Route No. 22 cars in Clark Street, south to 35th Street and Wentworth Avenue. Baseball park one block west.

#### BATHING BEACHES

**CLARENDON BEACH (3)**—Lake Michigan, between Montrose and Wilson Avenues. One of Chicago's great attractions, owned and operated by the city. In hot weather more than twenty thousand bathers use this beach daily. Take Broadway or Through Route No. 1 cars in State Street, north to Sunnyside Avenue. Bathing beach two blocks east.

**OAK STREET BEACH (22)**—Oak Street and Lake Michigan. Take Broadway or Through Routes Nos. 1 or 3 in State Street to Oak Street. East two blocks.

#### 75th STREET (RAINBOW) BEACH (59)

—Lake Michigan at 75th Street. Free bathing. Take southbound Cottage Grove-Lake Park Avenue, Through Route No. 4 or No. 5 cars in Wabash Avenue, State Street cars in State Street, Clark-Wentworth or Through Route No. 22 cars in Clark Street, to 75th Street and transfer east to bathing beach.



At one of the numerous Bathing Beaches

**79th STREET (ROCKY LEDGE) BEACH (60)**—79th Street and Lake Michigan. Free bathing under city supervision for children only. Take southbound Cottage Grove-Lake Park Avenue, Through Routes Nos. 4 or 5 in Wabash Avenue, State Street cars in State Street, Clark-Wentworth or Through Route No. 22 cars in Clark Street to 79th Street and transfer east to bathing beach.

**31st STREET BEACH (Colored)**—31st Street and Lake Michigan. Take any southbound line and transfer east in 31st Street.

**OTHER PUBLIC BEACHES**—In Lincoln Park at Diversey Boulevard and at Fullerton Avenue, and in Jackson Park, near 64th Street. See under these parks for directions.

## FOREST PRESERVES

Cook County has more than 31,000 acres of forest preserves, thousands of acres of which are available to street car riders. The open fields, wooded hills and winding river banks afford wonderful opportunities for recreation, picnics, camping and hiking. Some of the preserves nearest the city and directions for reaching them are given below.

**BEVERLY HILLS OR RYAN WOODS (61)**—On the southwest side of Chicago between Ashland Avenue and Western Avenue from 85th Street to 91st Street. Consists of 183 acres. Take Ashland Avenue cars or transfer from other lines to Ashland Avenue and ride south to 87th Street and walk west four blocks to the preserve.

**BROADVIEW (36)**—South of Maywood in Broadview along the banks of the Desplaines River. Consists of 360 acres. Take Roosevelt Road cars or transfer from other lines to Roosevelt Road and ride west to Austin Avenue. At Austin Avenue take Chicago and West Towns Roosevelt Road surface cars west to the preserve.



*Looking West through Forest Preserve along the Chicago River at North Crawford Avenue*

**CALDWELL (2)**—On the northwest side of Chicago on the Chicago River from Foster Avenue north to the city limits and beyond. It consists of 930 acres, has a tourist camp and a golf course. Take Milwaukee Avenue cars along Milwaukee Avenue or transfer to Milwaukee Avenue from any car line crossing it, and ride north to Surface Lines loop in forest preserve at Milwaukee Avenue and Imlay Street. Walk east three blocks.

**CALUMET PORTAGE (44)**—In Lyons along the Desplaines River. Consists of 253 acres; has a golf course. Take Ogden Avenue cars or transfer from other lines to Ogden Avenue and ride southwest to 25th Street and Laramie Avenue. At 25th Street and Laramie Avenue take the Chicago and West Towns Berwyn-Lyons surface cars to the preserve.

**GEORGE ROGERS CLARK (16)**—In Elmwood Park along the banks of the Desplaines River adjoining Thatcher Woods one mile to the north. Consists of 315 acres and has tourist camp site and golf course. Follow directions for Thatcher Woods.

**RIVERSIDE WOODS (43)**—In Riverside along the banks of the Desplaines River. Consists of 1,705 acres. Has a tourist camp site. Take 22nd Street cars or transfer from other lines to 22nd Street and ride west to Kenton Avenue. At Kenton Avenue take Chicago and West Towns 22nd Street LaGrange surface cars west to the preserve. An ideal hiking trip would be to take the 22nd Street route out to the Riverside Woods and hike north through Riverside Woods and along the Desplaines River, north through Broadview Preserve which ends at Roosevelt Road. Take Chicago and West Towns lines on Roosevelt Road at north end of preserve

and make return trip by Roosevelt Road. Hiking distance about three miles.

**STEEL (23)**—In River Forest along the banks of the Desplaines River. Consists of 120 acres. Take Madison Street cars or transfer from other lines to Madison Street cars and ride west to Austin Avenue. At Austin Avenue take the Chicago and West Towns surface cars west to the preserve. An ideal hiking trip would be to take the Madison Street route out to the Steel Preserve and hike north along the Desplaines River through the Steel Preserve. Thatcher Woods and George Rogers Clark Preserve to Fullerton Avenue, then walk east  $1\frac{1}{2}$  miles to the Grand Avenue car line for return trip. Hiking distance about 5 miles.

**THATCHER WOODS (17)**—In River Forest along the banks of the Desplaines River. Consists of 276 acres. Take State-Lake Through Route No. 16 cars, or transfer to State-Lake cars and ride west to Austin Avenue. At Austin Avenue take the Chicago and West Towns Lake Street surface cars west to the preserve.

**WOLF LAKE (63)**—On the southeast side of Chicago between 112th Street and 118th Street and from Avenue F east to the Indiana State line. Consists of 120 acres. Take Cottage Grove Through Route No. 5 cars to 108th and Ewing Avenue and transfer to the Ewing-Brandon line and ride south to 115th Street and Ewing Avenue. Preserve is two blocks east.

## GOLF COURSES FOR VISITORS

Golf holds an important place in the life of Chicago. Within a radius of 40 miles of the city there are 108 golf courses. There are free public courses at Jackson, Garfield, Lincoln, Marquette and Columbus Parks. See under PARKS for directions.

## LANDING FIELD

**CHICAGO MUNICIPAL AIRPORT (56)**—63rd Street and Cicero Avenue. One of the nation's finest airports and the greatest scene of aeronautical activity in the United States. A runway system of over two miles in length, numerous hangars and powerful beacons, some of which are 500-



*Soldier Field Stadium with Field Museum and Shedd Aquarium in background*

000,000 candle power. Air mail, express and passenger planes arrive and depart daily to every section of the United States. Take southbound State Street cars in State Street or Clark-Wentworth or Through Route No. 22 cars in Clark Street and transfer west on 63rd Street to Cicero Avenue.

### LIBRARIES

**CHICAGO PUBLIC LIBRARY (68)**—Washington Street, Michigan Avenue and Randolph Street. Entrances on Washington and Randolph Streets. The Library contains over 1,000,000 volumes, and the building, including furnishings, cost \$2,000,000. In it is located the Grand Army Memorial Hall with an interesting collection of Grand Army portraits, relics and curios.

**CHILDREN'S SCIENCE LIBRARY**—Lincoln Park. Contains about 500 volumes for children's reading on natural history. Open weekdays from 9 A. M. to 5 P. M. For directions see under LINCOLN PARK.

**JOHN CRERAR LIBRARY (65)**—86 East Randolph Street. Open weekdays from 9 A. M. to 10 P. M. Admission free. This is a scientific reference library containing about 500,000 volumes and 300,000 pamphlets.

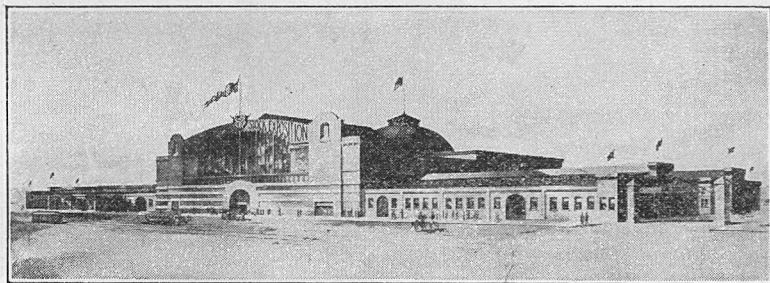
**NEWBERRY LIBRARY (14)**—Clark Street and Walton Place. Open daily, except Sundays and certain legal holidays, from 9 A. M. to 10 P. M. Admission free. The library contains nearly half a million books, including important special collections in American and English history, English literature, the North American Indian, genealogy and history of printing. Rare books, illuminated manuscripts or old prints are usually on exhibit. The library contains thirty-four oil portraits by George P. A. Healy, the American painter. Take northbound Clark-Wentworth Avenue, or Through Route No. 22 cars in Clark Street, north to Walton Place.

### MANUFACTORIES AND INDUSTRIES

**CLEARING INDUSTRIAL DISTRICT**—Extending from Cicero Avenue and West 65th Street west to Argo. The district contains 91 plants and warehouses. Take southbound cars to 63rd Street and transfer west.

**CENTRAL MANUFACTURING DISTRICT (41)**—Between Ashland Avenue, Morgan, 35th and Pershing Road; also along Pershing Road between Ashland and Western Avenues. This district contains about 250 business concerns, including such well-known firms as Westinghouse Electric & Manufacturing Company, Albert E. Pick & Company, William Wrigley, Jr., Company, United States Cold Storage Company, Winchester-Simmons Company, Cheek-Neal Coffee Company, Crane Company, Zenith Radio Corporation and Campbell Soup Company. Out of it 100,000 cars of manufactured goods are shipped annually. Take southbound Clark-Wentworth or Halsted Street cars in Clark Street, State Street or Ashland Avenue cars in State Street and transfer on 35th Street.

**FORD MOTOR COMPANY PLANT (64)**—125th Street and Torrence Avenue. Take Cottage Grove Avenue cars in Wabash Avenue, State Street cars in State Street or Clark-Wentworth cars in Clark Street, to 63rd Street and transfer to 63rd Street and Dorchester Avenue, terminal of the South Deering line. South Deering cars leave 63rd Street and



*International Live Stock Exposition Building, at Union Stock Yards*

Dorchester Avenue going south to 124th Street and Torrence Avenue. Plant one block south.

**INTERNATIONAL HARVESTER WORKS (39)**—26th Street and South Western Avenue. The McCormick Reaper works and Tractor plant are close together and visitors are welcome. Take Blue Island Avenue cars at Dearborn and Adams Streets west to Western Avenue.

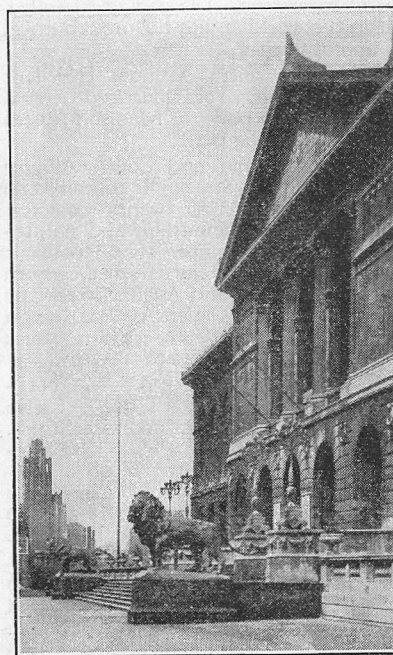
**MONTGOMERY WARD & COMPANY (15)**—Chicago Avenue and the river. Visitors are welcome at this large mail order institution on weekdays. Sightseeing trips through plant 9 A. M. to 4 P. M.; Saturday 9 A. M. to 11 A. M. Take Through Route No. 1 or No. 3, State or Broadway cars in State Street, Clark-Wentworth, Halsted Street or Through Route No. 22 cars in Clark Street, or Lincoln Avenue cars at LaSalle and Madison Streets, to Chicago Avenue and transfer west to plant at the river.

**PULLMAN CAR WORKS (62)**—111th Street and Cottage Grove Avenue. Take Cottage Grove Through Route No. 4 cars in Wabash Avenue south to 111th Street and Cottage Grove Avenue, main entrance to plant.

**SEARS ROEBUCK & COMPANY (27)**—Kedzie Avenue and Arthington Street. Visitors are welcome at this large mail order house on weekdays 8:30 A. M. to 5:30 P. M., Saturdays 8:30 A. M. to 9 P. M. Guides furnished for hourly trips through plant 9 A. M. to 4 P. M. Madison, Van Buren or Harrison Street cars west to Kedzie Avenue, transfer south to Arthington Street, main entrance.

**UNION STOCK YARDS (48)**—Between Pershing Road and 47th Street and Halsted Street and South Marshfield Avenue. The world-famous center of the packing industry. Covers 475 acres. The International Live Stock Exposition Amphitheater is on the grounds. Take southbound Halsted Street cars in Clark Street or Wallace-Racine Avenue cars in State Street direct to main entrance at Halsted and Root Streets.

**WESTERN ELECTRIC COMPANY (38)**—22nd Street and South Cicero Avenue. These works supply 90 per cent of the telephone apparatus used in the United States and much of the electrical equipment installed in Europe, South America, Asia and Africa. More than 40,000 employes are engaged in this work and the plant covers 200 acres of land. Take any southbound car in Clark Street or State Street or Indiana Avenue cars in Wabash Avenue south to 22nd Street, and transfer to 22nd-Kenton Avenue. Or take Lake Street, Madison Street, Harrison Street or Roosevelt Road cars west to Cicero Avenue and transfer south on Cicero Avenue to the plant.



*Art Institute, looking north in Michigan Boulevard*

### MUSEUMS

**ACADEMY OF SCIENCES (10)**—Lincoln Park at Clark and Center Streets. A noted museum of natural history, open weekdays 9 A. M. to 5 P. M. and on Sundays 1 P. M. to 5 P. M. Take Broadway or Through Routes No. 1 or No. 3 cars in State Street, Clark-Wentworth or Through Route No. 22 cars in Clark Street, or

Lincoln Avenue cars at LaSalle and Madison Streets, direct to Academy at Clark and Center Streets.

**ART INSTITUTE OF CHICAGO (70)**—Grant Park, opposite Adams Street. Open weekdays 9 A. M. to 5:30 P. M. Sundays 12 noon to 8 P. M. Free to the public on Wednesdays, Saturdays and Sundays. On other days an admission fee of 25 cents is charged. It ranks among the best art galleries in the country, containing excellent examples of old masters and modern paintings and a comprehensive collection of sculpture, both ancient and modern.

**CHICAGO HISTORICAL SOCIETY (19)**—Dearborn and Ontario Streets. Depository of valuable historical documents and relics of Chicago's early days, among them one of the most complete collections of Abraham Lincoln relics. Open daily 9 A. M. to 5 P. M., except Saturday afternoons and Sundays. Free. Take northbound Clark-Wentworth or Through Route No. 22 cars in Clark Street, Broadway, State Street, or Through Route No. 1 or No. 3 cars in State Street, north to Ontario Street, walk one block to Dearborn Street.

**FIELD MUSEUM OF NATURAL HISTORY (30)**—Roosevelt Road and Lake Michigan. Open daily 10 A. M. to 4 P. M., November, December and January, and to 5 P. M., February, March, April, and October, and to 6 P. M. other months. Thursdays, Saturdays and Sundays free; other days 25 cents. The building covers 11 acres of ground and represents an expenditure of approximately \$7,500,000. Take any southbound car in Wabash Avenue except Broadway to Roosevelt Road, walk east one block to Michigan Avenue, north one-half block to Eleventh Place, east one block to viaduct crossing Illinois Central tracks.

## PARKS

The park system of Chicago includes nearly 5,000 acres of land. There are one hundred and ninety-three small parks and fourteen larger parks, thirty-one ball grounds and twelve bathing beaches. Free public golf courses are located in Jackson, Garfield, Lincoln, Marquette and Columbus parks. The conservatories in Lincoln, Washington and Garfield parks are noted for their beautiful collections of horticultural specimens. The zoological collection in Lincoln Park is one of the finest in the world and in the aquarium in the same park there is a splendid collection of fresh-water fish.

**COLUMBUS PARK (26)**—Harrison Street and Central Avenue. Excellent for swimming, boating, baseball, tennis and golf. Take Harrison-Central cars at Dearborn and Adams Streets direct to park, or Madison-Austin cars to Central Avenue. Two blocks south to the park.

**DOUGLAS PARK (31)**—Between South California and South Albany Avenues and West Roosevelt Road and West 19th Street. It contains one hundred and twenty-eight acres, with a lake covering twenty-six acres. The buildings include a refectory, assembly hall, gymnasium and natatorium. Take Roosevelt Road cars at Dearborn and Adams Streets, or Ogden Avenue cars on Washington Street direct to the park.

**DOUGLAS MONUMENT (46)**—Lake Front and 35th Street. A small park containing the tomb of Stephen A. Douglas. Take Cottage Grove Avenue cars to 35th Street. Park one block east.

**GARFIELD PARK (24)**—Madison Street and Central Park Avenue. It is distinguished because of its beautiful gardens. There are



University Class studies Botany in Garfield Park Conservatory

facilities for boating, golf and other sports. Many artistic and notable statues stand in various parts of the park. The conservatory is the largest in the United States. Take Madison Street cars at Madison and Dearborn Streets or on Monroe Street west of Dearborn Street to park entrance.

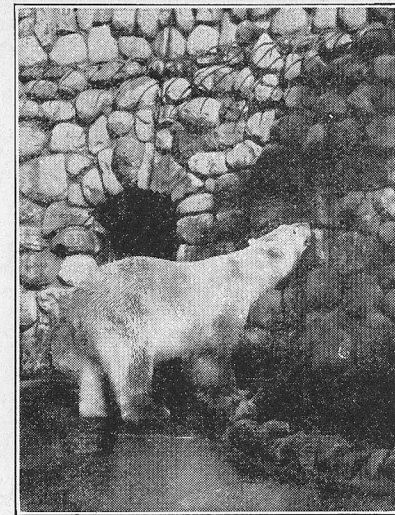
**GRANT PARK (25)**—On the lake front between Roosevelt Road and Randolph Street. This park contains 303.7 acres. In it are located the Field Museum, the Soldier Field, the Art Institute and Shedd Aquarium now under construction. At the south end of the Institute is the Lorado Taft statue group "The Spirit of the Great Lakes." Other works of art include the equestrian statue of John A. Logan, the statue of Alexander Hamilton and the new Buckingham Fountain (see under Other Points of Interest). One block east to the park from Wabash Avenue car line.

**HUMBOLDT PARK (13)**—California Avenue and Division Street. One of the largest of the west side parks, containing pavilions, pergolas, terraces and a lake covering twenty-four acres. Among the statues in the park are those of Lief Erikson and Kosciuszko. Take Division Street cars on Washington Street, direct to park.

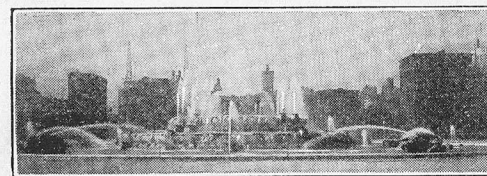
**JACKSON PARK (55)**—63rd Street and Stony Island Avenue. The site of the World's Columbian Exposition in 1893. Here are located the Columbus Caravel and Cahokia Court House, the oldest public building in the Mississippi Valley. There are splendid boating facilities, a bathing beach, tennis courts, two public golf courses, flower gardens, and a government life-saving station. Take southbound Cottage Grove-Lake Park Avenue, Cottage Grove-55th Street or Through Route No. 1 cars in Wabash Avenue or transfer east on 63rd Street from other north and south car lines.

**LINCOLN PARK (7)**—The park proper extends along the lake from North Avenue to Diversey Parkway, and when extensions are completed it will have a lake frontage of over five miles. The Academy of Sciences (10), the first museum of natural history and science in the west, is located at the Center Street entrance. The Zoo (12) contains over twenty-five hundred specimens housed in large animal houses. The Aquarium (11) contains a splendid collection of fresh-water fish. In the Refectory meals are served in a large dining hall. The conservatory is one of the best in the country. Numerous statues are found along the walks and drives, among them the famous statue of Abraham Lincoln by St. Gaudens. The Fresh Air Sanitarium on the lake, a public bathing beach, a golf course, tennis courts and baseball diamonds are among the other attractions. Take northbound Broadway, Through Route No. 1 or No. 3 cars in State Street, Clark-Wentworth or Through Route No. 22 cars in Clark Street or Lincoln Avenue cars at LaSalle and Madison Streets.

**MARQUETTE PARK (58)**—Kedzie and 67th Street. A public golf course is one of the chief attractions here. Take Madison, Van Buren, Harrison or Roosevelt Road cars to Kedzie Avenue and transfer south to the



At the Zoo in Lincoln Park



Buckingham Fountain, Grant Park

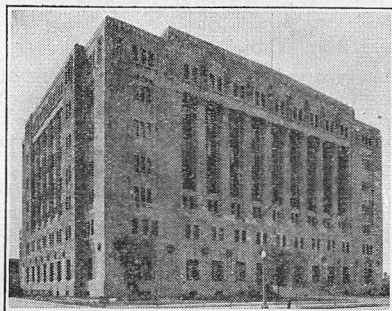
park (end of the line); or take Cottage Grove Avenue, State Street, Clark-Wentworth or Halsted Street cars south to 67th-69th line and transfer west to the park (end of line).

**McKINLEY PARK (45)**—Municipal recreation center and public playground. Take Archer Avenue cars in State Street south to park at Archer and Western Avenues.

**SHERMAN PARK (51)**—Municipal recreation center and public playground. Take Wallace-Racine Avenue cars in State Street south to park at Racine Avenue and 53rd Street.

**WASHINGTON PARK (52)**—Cottage Grove Avenue and 51st Street. The meadows on which are located numerous baseball diamonds and tennis courts are the pride of the park commissioners controlling the South Park System. The statue of Washington is located in this park. A conservatory, the sunken gardens, boating, croquet, archery, and the Refectory where meals can be obtained are some of the attractions. Lorado Taft's "Fountain of Time" (54), one of the art treasures of the city, is located in the southeast corner of the park at Cottage Grove Avenue and 60th Street. Take Indiana Avenue-51st Street cars in Wabash Avenue south to 51st Street entrance to park, Cottage Grove-71st Street or Through Routes No. 4 or No. 5 cars in Wabash Avenue south to park.

## PUBLIC BUILDINGS



*Cook County Criminal Court Building*

Avenue car in Dearborn Street at Madison or Monroe to 26th Street and California Avenue.

**CITY AND COUNTY BUILDING (66)**—Between Washington, Randolph, Clark and LaSalle Streets. In this building are the executive offices and the courts of both the city and county governments.

**FEDERAL BUILDING (72)**—Between Adams Street and Jackson Boulevard and Clark and Dearborn Streets. In this building are the United States post office and the federal courts and offices.

**NEW CRIMINAL COURT BUILDING AND COUNTY JAIL (38½)**—California and 26th Street. Take Blue Island

## RAILROAD DEPOTS AND ELECTRIC TERMINALS

**CHICAGO AURORA AND ELGIN WELLS STREET TERMINAL (74)**—314 South Wells Street. Take any westbound car to Wells Street. Transfer to depot between Jackson Boulevard and Van Buren Street.

**CHICAGO NORTH SHORE & MILWAUKEE RAILROAD (71)**—223 South Wabash Avenue. Take southbound Wabash Avenue cars to Adams Street.

**CHICAGO & JOLIET TERMINAL (50)**—Archer and Cicero Avenues. Take southbound Archer-Cicero Avenue cars in State Street to Cicero and Archer Avenues.

**DEARBORN STATION (77)**—Dearborn and Polk Streets. Used by Atchison, Topeka & Santa Fe, Chicago & Eastern Illinois, Chicago & Western Indiana, Erie, Grand Trunk, Wabash and Monon Railroads. Take any southbound car in Clark Street or State Street to Polk Street.

**GRAND CENTRAL STATION (76)**—Harrison and Wells Streets. Used by Baltimore & Ohio, Soo Line, Chicago Great Western and Pere Marquette Railroads. Take Roosevelt Road cars at Dearborn and Adams Streets; Harrison Street or Clybourn Avenue cars in Harrison Street, west

to station. Or any westbound car to Wells Street and transfer south to station at Harrison Street.

**ILLINOIS CENTRAL STATION (29)**—Roosevelt Road and Michigan Avenue. Used by Illinois Central, Big Four, Chesapeake & Ohio and Michigan Central Railroads. Take any southbound car in Wabash Avenue except Broadway to Roosevelt Road, station one block east. Or any southbound car in State Street to Roosevelt Road, station two blocks east.

**ILLINOIS CENTRAL SUBURBAN STATION**—Randolph Street, east of Michigan Boulevard. Used by Illinois Central Suburban trains and Chicago South Shore & South Bend Railroad Company. Walk east from Wabash Avenue lines at Randolph Street and use pedestrian subway under Michigan Avenue to station. Suburban trains also stop at Van Buren Street Station reached by pedestrian subway.

**LA SALLE STREET STATION (75)**—Van Buren Street, between LaSalle and Sherman Streets. Used by Chicago, Rock Island & Pacific, New York Central, and the Nickel Plate Railroads. Take any southbound car in Clark Street or Wells Street, to Van Buren Street, transfer one block to station.

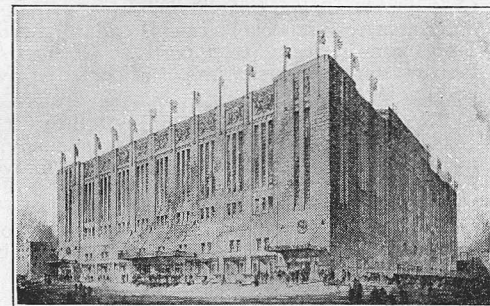
**NORTH WESTERN STATION (67)**—Madison Street between Canal and Clinton Streets. Passenger terminal of the Chicago & North Western Railway. Take Milwaukee Avenue cars in Madison Street or Madison cars in Monroe Street, west to the station.

**UNION STATION (69)**—Canal Street between Adams Street and Jackson Boulevard. Used by the Chicago, Burlington & Quincy, Chicago & Alton, Chicago, Milwaukee & St. Paul and Pennsylvania Railroads. Take Harrison Street or Blue Island Avenue cars in Adams Street, or Van Buren Street cars in Van Buren Street, west to Canal Street.

## COLISEUM AND STADIUMS

### CHICAGO STADIUM

(73)—Madison and Wood Streets; the largest indoor sports arena in the world, with a capacity of 25,000 persons, which is 8,000 more than Madison Square Gardens in New York. A feature of the huge auditorium is a giant organ, the greatest ever built, with a volume of a military band of 2,500 pieces. Take westbound Madison street cars in Monroe Street direct to stadium.



*Chicago Stadium, Madison, Wood, Warren and Lincoln Streets*

**COLISEUM (34)**—1513 South Wabash Avenue. An auditorium seating 14,000 persons. Several national political conventions have been held here. It is used for automobile, electrical and other shows, large conventions and other large gatherings. Take southbound Cottage Grove, Indiana or Through Route No. 1 or No. 3 cars in Wabash Avenue, direct to Coliseum.

**SOLDIER FIELD STADIUM (35)**—At the south end of Grant Park adjoining the Field Museum. With a length of 1,294 feet north and south and a width of 678 feet, the stadium will seat, when fully completed, 160,000 persons. Take Southbound Cottage Grove, Indiana or Through Route No. 1 or No. 3 cars in Wabash Avenue to Roosevelt Road. Stadium east of Michigan Boulevard at south end of Grant Park.

## UNIVERSITIES AND COLLEGES

**ARMOUR INSTITUTE OF TECHNOLOGY (40)**—3300 Federal Street. Take Clark-Wentworth, Through Route No. 22 or State Street cars south to 33rd Street.





*Coliseum, Fifteenth Street and Wabash Avenue*

Howard cars in State Street to Sheridan Road, 6400 north, and walk north two blocks.

**NORTHWESTERN UNIVERSITY—McKINLOCK CAMPUS (18)**—Chicago Avenue and Lake Shore Drive. (Including medical, dental, law and commercial schools.) Take Broadway, State, or Through Route Nos. 1 or 3 cars in State Street north to Chicago Avenue and transfer east. Northwestern University proper is located in Evanston on Sheridan Road and the lake front.

**UNIVERSITY OF CHICAGO (53)**—58th Street and Ellis Avenue. Over 14,000 students attend the university annually. It represents an investment of over \$60,000,000. Take Cottage Grove-55th Street or Through Route No. 1 cars in Wabash Avenue to 55th Street and Ellis Avenue. University grounds and buildings two blocks south. Or take Cottage Grove-71st Street, or Through Route No. 4 or No. 5 cars in Wabash Avenue south to 57th Street. University grounds and buildings four blocks east. Guides furnished for visitors.

## ZOO (12) and AQUARIUMS (11)

See under LINCOLN and GRANT PARKS.

## OTHER POINTS OF INTEREST

**AMERICAN FURNITURE MART (20)**—666 Lake Shore Drive. This building, the main structure of which is 17 stories with a tower 34 stories high, has a floor space of more than 1,900,000 square feet and is the largest building in the world. Its cost, including the land, was \$15,000,000. It is devoted exclusively to furniture and furniture display. Take any northbound car in Clark Street to Chicago Avenue and transfer east direct to the building. Or take any northbound car in State Street except Through Route No. 16 and transfer east in Chicago Avenue direct to the building.

**BUCKINGHAM FOUNTAIN (78)**—In Grant Park at the foot of Congress Street. The largest and one of the most beautiful fountains in the world. It has several varieties of displays and is illuminated at night. Closed during the winter months. Walk east from street cars on Wabash Avenue at Congress Street.

**DE PAUL UNIVERSITY (9)**—1010 Webster Avenue. Take Lincoln Avenue cars at LaSalle and Madison Streets, Through Route No. 3 cars in State Street, north to Fullerton Avenue and transfer west on Webster-Racine Avenue cars.

**LEWIS INSTITUTE (79)**—Madison at Damen Avenue. School of the liberal arts. Equal to four-year college course. Issues degree of Bachelor of Science. Take Madison Street car in Monroe Street west to Robey.

**LOYOLA UNIVERSITY (1)**—Loyola Avenue and Sheridan Road. Take Broadway-

## ELKS' MEMORIAL (6)

—Lake View Avenue and Diversey Parkway. Take Clark-Wentworth or Through Route No. 22 or No. 42 cars in Clark Street, Broadway or Through Route No. 1 cars in State Street, north to Clark Street and Diversey Parkway and walk east to Lake View Avenue.

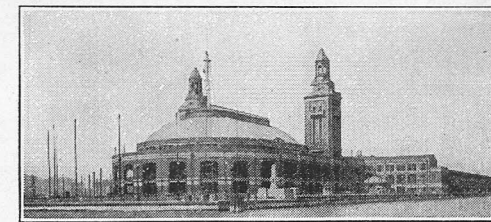
## FORT DEARBORN MASSACRE MONUMENT (37)

—18th Street and the lake. The monument represents the rescue of Mrs. Helm by Black Partridge. Take Cottage Grove Avenue cars south to 18th Street and Indiana Avenue. Monument one block east.

**GHETTO (32)**—Maxwell between Halsted and Jefferson Streets. The market is typical of the Russian Jewish customs. It is closed on Saturday, the Jewish Sabbath. Take Roosevelt Road cars at Dearborn and Adams Streets to Jefferson Street and walk south; or Madison Street, Blue Island, Van Buren or Harrison Street cars to Halsted Street and transfer south to Maxwell Street.

**HULL HOUSE (28)**—Halsted and Polk Streets. Noted social settlement founded by Miss Jane Addams. Open to visitors Saturday mornings and afternoons. Take Madison Street, Van Buren Street, Blue Island Avenue or Harrison Street cars west to Halsted Street and transfer south to entrance at Polk Street.

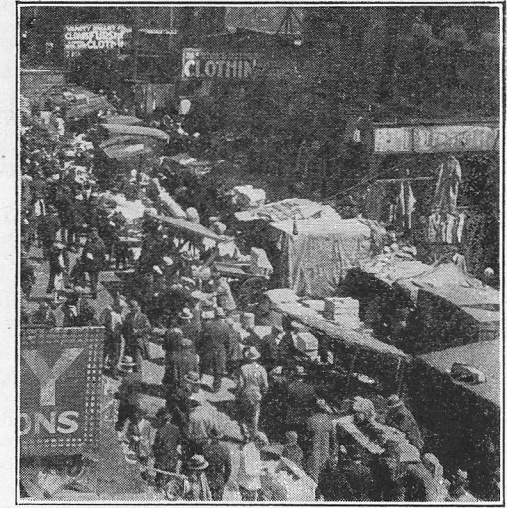
**ILLINOIS CENTENNIAL MONUMENT (8)**—Logan Square. Erected in 1918 in honor of centennial of admission of Illinois into the union. Take Milwaukee-Gale cars in Madison Street direct to Logan Square.



*Navy Pier*

baskets, children's playgrounds, observation towers, art rooms and board walk. During the season band concerts and dancing. Take northbound Through Route No. 1 or No. 3, Broadway or State Street cars in State Street, Clark-Wentworth, Halsted Street, or Through Route No. 22 cars in Clark Street, or Lincoln Avenue cars at LaSalle and Madison Streets north to Grand Avenue and transfer east to Navy Pier.

**SOUTH WATER MARKET (33)**—14th Place and Racine Avenue. Take Blue Island Avenue cars at Adams and Dearborn Streets and ride west and southwest to Blue Island and Racine Avenues; or take 14th-16th Street cars at Roosevelt Road and Wabash Avenue and ride west to 14th Street and Racine Avenue. Market one-half block south.



*Sunday Afternoon in Maxwell Street—"The Ghetto"*

## ROUTES OF CHICAGO SURFACE LINES

**T**HE routes of the various lines of the Chicago Surface Lines system are given in detail below. These route guides, used in connection with the map of the city in the back of the book, enable one to ascertain the street intersections at which passengers may board cars to reach any desired destination. The night car schedules also will be helpful to those desiring street car service between 1 A. M. and 5 A. M.

**ARCHER AVENUE-SOUTH CICERO AVENUE**—From South Cicero Avenue (4800 west) and Archer Avenue (5200 south) northeast and north via Archer Avenue to State Street to Polk Street to Dearborn Street to Lake and State Streets. Returning south on State Street to Archer Avenue to Cicero Avenue (starting point).

Northbound destination sign—**Archer-Downtown**.  
Southbound destination sign—**Archer-Cicero**.

**NIGHT CAR SCHEDULE:** Lake and State Streets to 38th Street and Archer Avenue (south and west)—1:12 A. M. to 5:27 A. M., 15 minute service.

All these cars go through to south terminals.  
Alternate to Cicero-Archer loop and 38th Street and Central Park Avenue; Cicero-Archer loop to Lake and State Streets (east and west)—12:21 A. M. to 4:51 A. M., 30 minute service.

**ARCHER AVENUE-38TH STREET**—From South Central Park Avenue (3600 west) and 38th Street (3800 south) east and northeast via 38th Street to Archer Avenue to State Street to Polk Street to Dearborn Street to Lake Street to State Street, south on State Street to Archer Avenue, thence over incoming route to starting point.

Northbound destination sign—**Archer-Downtown**.  
Southbound destination sign—**38-Central Park**.

**NIGHT CAR SCHEDULE:** 38th Street and Central Park Avenue to Lake and State Streets (east and west)—12:45 A. M. to 4:45 A. M., 30 minute service.

**ARGO**—From Archer Avenue (5200 south) and South Cicero Avenue (4800 west) south and west via South Cicero Avenue to West 63rd Street to South Central Avenue to West 63rd Place to Archer Avenue (Argo).

Northbound destination sign—**Cicero-Archer**.  
Southbound destination sign—**Argo**.

**NIGHT CAR SCHEDULE:** Last car leaves Argo (east and northbound) at 12:30 A. M.; last car leaves Cicero-Archer loop (south and westbound) at 12:00 A. M.

**ARMITAGE AVENUE-CENTER STREET**—From Grand Avenue (5100 west) and Armitage Avenue (2000 north) east on Armitage Avenue to North Paulina Street to Cortland Street to North Racine Street to Center Street to North Clark Street (230 west at 1960 north).

East-bound destination sign—**Center-Clark**.  
Westbound destination sign—**Armitage-Grand**.

**NIGHT CAR SCHEDULE:** Grand Avenue to Ashland Avenue (eastbound or westbound)—1:08 A. M. to 5:00 A. M., 15 minute service.

**ASHLAND AVENUE—Through Route No. 9**—From West 69th Street (6900 south) and South Ashland Avenue (1600 west) north on South Ashland Avenue to West Roosevelt Road to South Paulina Street to North Paulina Street to West Lake Street to North Ashland Avenue to Cortland Street to Southport Avenue to North Clark Street (4100 north at 1400 west). Returning south over incoming route.

Northbound destination sign—**Southport-Clark**.  
Southbound destination sign—**Ashland-69**.

Short line cars on this route stop at Cortland and Wood Streets, northbound.

**NIGHT CAR SCHEDULE:** 69th and Ashland to Clybourn-Southport—1:00 A. M. to 4:45 A. M., 15 minute service. Every second car goes through to 95th Street and Ashland Avenue on the south side and Clark Street and Ashland Avenue on the north side, giving 30 minute service on these outer sections.

**ASHLAND-DOWNTOWN**—From West 95th Street (9500 south) and South Ashland Avenue (1600 west) north and northeast via South Ashland Avenue to Archer Avenue to South State Street to Polk Street to Dearborn Street to Lake Street to State Street. Returning south on South State Street to Archer Avenue, thence over incoming route to starting point.

**NIGHT CAR SCHEDULE:** Last car leaves downtown State and Lake Streets at 11:10½ P. M.  
Northbound destination sign—**Ashland-Downtown**.  
Southbound destination sign—**Ashland-95**.

Short line cars on this route stop at 69th Street and 79th Street, southbound.

**ASHLAND AVENUE (North)**—From North Ashland Avenue (1600 west) and Irving Park Boulevard (4000 north) south via Ashland Avenue to Clybourn Avenue to Fullerton Avenue (1600 west to 2400 north).

Northbound destination sign—**Ashland-Irving Park**.  
Southbound destination sign—**Ashland-Fullerton**.

**NIGHT CAR SCHEDULE:** Southbound, last car leaves Irving Park Boulevard at 12:50 A. M., northbound, last car leaves Clybourn Avenue at 1:03 A. M.

**BELMONT AVENUE**—From North Central Avenue (5600 west) and Belmont Avenue (3200 north) east to North Halsted Street (800 west at 3200 north).

Eastbound destination sign—**Belmont-Halsted**.  
Westbound destination sign—**Belmont-Central**.

**NIGHT CAR SCHEDULE:** Eastbound, 1:05 A. M. to 4:35 A. M., 30 minute service; westbound, 1:37, 2:00 to 4:30, 30 minute service.

**BLUE ISLAND AVENUE**—From West 26th Street (2600 south) and South Kenton Avenue (4600 west) east and northeast via West 26th Street to Blue Island Avenue to West Harrison Street to South Clinton Street to West Monroe Street to South Dearborn Street to West Adams Street; westbound on West Adams Street to Clinton and then over incoming route.

Eastbound destination sign—**Blue Island-Downtown**.  
Westbound destination sign—**26-Kenton**.

**NIGHT CAR SCHEDULE:** Southbound and westbound, 12:49 A. M. to 1:42 A. M., 25 to 28 minute service; southbound and westbound, 1:42 A. M. to 4:42 A. M., 30 minute service; eastbound and northbound, 1:28 A. M. to 4:28 A. M., 30 minute service.

**BROADWAY\***—From North Clark Street (1600 west) and Devon Avenue (6400 north) south and southeast via Devon Avenue to Broadway to North Clark Street to Division Street to North State Street to East Lake Street to North Wabash Avenue to South Wabash Avenue to East Harrison Street to South State Street to North State Street to Division Street and then over incoming route.

\*See Cottage Grove-Broadway, Through Route No. 1.  
Northbound destination sign—**Broadway-Devon**.

Southbound destination sign—**Wabash-Harrison**.

**NIGHT CAR SCHEDULE:** Harrison and Wabash to Clark and Howard, Northbound, 12:56½ P. M. to 2:06 A. M., 8 and 10 minute service, 15 minute service thereafter to 5:21 A. M.; southbound, 12:32½ A. M. to 4:42½ A. M., 15 minute service.

**CHICAGO AVENUE**—From North Austin Boulevard (6000 west) and West Chicago (800 north) east and southeast via West Chicago Avenue to East Chicago Avenue to Lake Shore Drive and East Grand Avenue to Navy Pier (530 north at 500 east).

Eastbound destination sign—**Navy Pier**.  
Westbound destination sign—**Chicago-Austin**.

Short line cars on this route stop at Lake Shore Drive, eastbound, and at Crawford Avenue and Cicero Avenue, westbound.

**NIGHT CAR SCHEDULE:** Eastbound, 1:06 A. M. to 4:36 A. M., 15 minute service; westbound, 1:05 A. M. to 2:03 A. M., 8 minute to 13 minute service; westbound, 2:03 A. M. to 5:18 A. M., 15 minute service.

**CICERO AVENUE**—From West 25th Street (2500 south) and South Cicero Avenue (4800 west) north via South Cicero Avenue and North Cicero Avenue to Montrose Avenue (4400 north).

Northbound destination sign—**Cicero-Montrose**.  
Southbound destination sign—**Cicero-25**.

NIGHT CAR SCHEDULE: Northbound, 1:10 A. M. to 1:30 A. M., 20 minute service; northbound, 1:30 A. M. to 5:00 A. M., 30 minute service; southbound, 12:50 A. M. to 4:20 A. M., 30 minute service.

**CLARK-WENTWORTH**—Through Route No. 22, from West 81st Street (8100 south) and South Halsted Street (800 west) northeast and north via 81st Street to Vincennes Avenue to Wentworth to 22nd Street to South Clark Street to North Clark and Howard Streets (7600 north at 1800 west). Returning same route. Northbound destination sign—**Clark-Howard**. Southbound destination sign—**81-Halsted**.

Short line cars on this route stop at Devon Avenue, northbound, and at 63rd Street and Wentworth Avenue, and 80th Street and Vincennes Avenue, southbound.

NIGHT CAR SCHEDULE: 81st and Halsted Streets to Chicago Avenue and Wells Street—Northbound, 1:00 A. M. to 4:45 A. M., 15 minute service; southbound, 1:18 A. M. to 4:18 A. M., 15 minute service.

Howard and Clark Streets to Van Buren and Clark Streets—Southbound, 1:05 A. M. to 4:05 A. M., 30 minute service; northbound, 1:33 A. M., 2:00 A. M. to 4:58 A. M., 30 minute service.

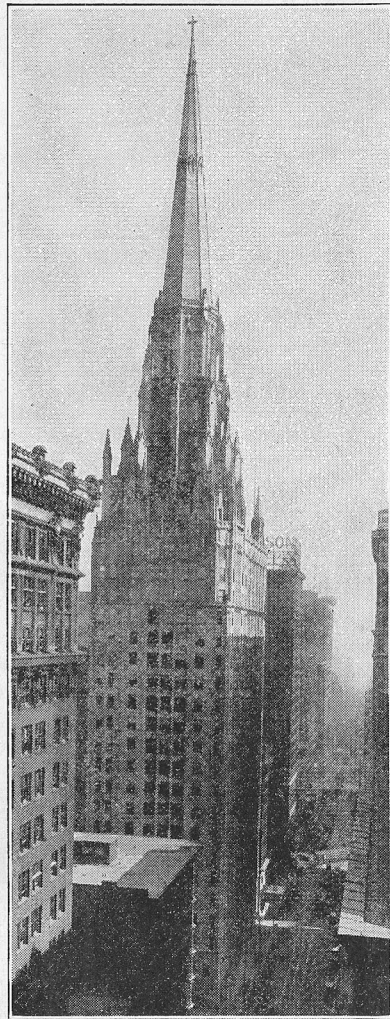
**CLYBOURN AVENUE**—From Belmont Avenue (3200 north) and North Western Avenue (2400 west) southeast and east via Clybourn Avenue to West Division Street to North Wells Street to Harrison Street to State Street (600 south at 1 west). Northbound destination sign—**Clybourn-Belmont**. Southbound destination sign—**Harrison-State**.

NIGHT CAR SCHEDULE: Northbound, 1:21 A. M. to 5:06 A. M., 25 minute service; southbound, 1:10 A. M. to 4:30 A. M., 25 minute service.

**COTTAGE GROVE AVENUE-BROADWAY**—Through Route No. 1—From Lake Park Avenue (1600 east) and East 55th Street (5500 south) west and north via 55th Street to Cottage Grove Avenue to Indiana Avenue to 18th Street to South State Street to North State Street to Division Street to North Clark Street to Broadway to Devon Avenue to North Clark Street to Howard Street (7600 north at 1800 west). Returning by same route to Lake and State Streets to Wabash Avenue, south on Wabash Avenue to 18th Street, thence south over incoming route.

Northbound destination sign—**Broadway-Howard**. Southbound destination sign—**Lake Park-55**.

NIGHT CAR SCHEDULE: 55th Street and Cottage Grove Avenue to 64th Street and Stony Island Avenue—Eastbound, 1:01 A. M. to 4:46 A. M., 15 minute service; north and westbound, 1:30 A. M. to 4:30 A. M., 15 minute service. Last Through Route No. 1 car leaves 56th Street and Lake Park Avenue at 11:54 P. M.; last car leaves Howard and Clark Streets at 11:55 P. M.



*Methodist Temple, Washington and Clark Streets*

**COTTAGE GROVE AVENUE-PULLMAN**—Through Route No. 4—From East 115th Street (11500 south) and Cottage Grove Avenue (100 east) north via Cottage Grove Avenue to Indiana Avenue to 18th Street to Wabash Avenue to Washington Street to Garland Court to Randolph Street to Wabash Avenue. Returning south over incoming route. Northbound destination sign—**Cottage-Downtown**. Southbound destination sign—**Cottage-115**.

NIGHT CAR SCHEDULE: Randolph Street and Wabash Avenue to 71st Street and Cottage Grove Avenue—Southbound, 1:07 A. M. to 1:40 A. M., 10½ minute service; southbound, 1:40 A. M. to 4:55 A. M., 15 minute service.

All these cars go through to south terminals with alternate cars going to 115th Street and Cottage Grove Avenue and Ewing Avenue and 108th Street.

Northbound from 115th Street and Cottage Grove Avenue at 1:24 A. M. to 4:24 A. M., 30 minute service; northbound from Ewing Avenue and 108th Street at 1:55 A. M. to 5:25 A. M., 30 minute service.

**COTTAGE GROVE AVENUE-SOUTH CHICAGO**—Through Route No. 5—From 108th Street (10800 south) and Ewing Avenue (3632 east) north and northwest via Ewing Avenue to 95th Street, to South Chicago Avenue, to Cottage Grove Avenue to Indiana Avenue to 18th Street to Wabash Avenue to Washington Street to Garland Court to Randolph Street to Wabash Avenue. Returning south over incoming route. Short line cars stop at 93rd Street and Baltimore Avenue. Northbound destination sign—**Cottage-Downtown**. Southbound destination sign—**Ewing-108**.

**CRAWFORD AVENUE**—From West 31st Street (3100 south) and South Kostner Avenue (4400 west) east and north via West 31st Street to South Crawford Avenue to North Crawford and Bryn Mawr Avenues (4000 west at 5600 north).

Northbound destination sign—**Crawford-Bryn Mawr**.

Southbound destination sign—**31-Kostner**.

Short line cars on this route stop at Elston Avenue, northbound.

NIGHT CAR SCHEDULE: Southbound, 1:00 A. M. to 4:30 A. M., 30 minute service; northbound, 1:00 A. M. to 4:30 A. M., 30 minute service.

**DAMEN AVENUE**—From South Damen Avenue (2000 west) and Blue Island Avenue (2400 south) north via South Damen Avenue to North Damen Avenue and Fullerton Avenue (2000 west at 2400 north). Northbound destination sign—**Damen-Fullerton**. Southbound destination sign—**Damen-Blue Island**.

NIGHT CAR SCHEDULE: Fullerton Avenue to Blue Island Avenue—Northbound, 1:45 A. M. to 4:40 A. M., 35 minute service; southbound, 1:45 A. M. to 4:40 A. M., 35 minute service.

**DAMEN AVENUE-SOUTH**—From West 47th Street (4700 south) and South Damen Avenue (2000 west) south via South Damen Avenue to West 63rd Street (6300 south at 2000 west). Northbound destination sign—**Damen-47**. Southbound destination sign—**Damen-63**.

NIGHT CAR SCHEDULE: 47th Street to 63rd Street—Southbound, last car leaves 47th Street at 12:18 A. M.; northbound, last car leaves 63rd Street at 12:05 A. M.

**DEVON AVENUE**—From North Kedzie Avenue (3200 west) and Devon Avenue (6400 north) east to Broadway (6400 north at 1200 west). Eastbound destination sign—**Devon-Broadway**. Westbound destination sign—**Devon-Kedzie**.

NIGHT CAR SCHEDULE: Eastbound, 1:09 A. M. to 5:38 A. M., 15 minute service; westbound, 12:53 A. M. to 5:23 A. M., 15 minute service. Last car leaves Broadway at 1:04 A. M.

**DIVERSEY AVENUE**—From Diversey Avenue (2800 north) and Kimball-Milwaukee Avenue (3400 west) west on Diversey Avenue to Crawford Avenue (2800 north at 4000 west). Eastbound destination sign—**Diversey-Milwaukee**. Westbound destination sign—**Diversey-Crawford**.

NIGHT CAR SCHEDULE: Last car leaves Milwaukee Avenue at 12:48 A. M.; last car leaves Crawford Avenue at 12:42 A. M.

**DIVERSEY AVENUE BUS EXTENSION**—From Diversey Avenue (2800 north) and Crawford Avenue (4000 west) west on Diversey Avenue to Laramie Avenue (2800 north at 5200 west). Eastbound destination sign—**Diversey-Milwaukee**. West-bound destination sign—**Diversey-Laramie**.

NIGHT CAR SCHEDULE: Last bus leaves Crawford Avenue 11:55 P. M. Last bus leaves Laramie Avenue 12:03½ A. M.

**DIVISION STREET (Downtown)**—From North Mozart Street (2833 west) and West Division Street (1200 north) east and southeast via West Division Street to Milwaukee Avenue to Desplaines to West Randolph Street to North Dearborn Street to West Washington Street, thence west on West Washington Street to North Desplaines Street, then over incoming route. Northbound destination sign—**Division-California**. Southbound destination sign—**Division-Downtown**.

NIGHT CAR SCHEDULE: Washington and Dearborn Streets to Mozart Street—Northbound, 1:02 A. M. to 5:02 A. M., 30 minute service; southbound, 1:05 A. M. to 4:35 A. M., 30 minute service.

**DIVISION STREET-WELLS STREET**—From North Mozart Street (2833 west) and West Division Street (1200 north) east on West Division Street to North Wells Street (200 west at 1200 north). Eastbound destination sign—**Division-Wells**. Westbound destination sign—**Division-California**.

NIGHT CAR SCHEDULE: Division and Wells Streets to Mozart Street, last car leaves Division and Wells Streets at 12:28 A. M., last car leaves Mozart Street at 12:25 A. M.

**DIVISION STREET-AUSTIN AVENUE**—From North Austin Avenue (6000 west) and West Division Street (1200 north) east on West Division Street to West Grand Avenue (1200 north at 3638 west). Eastbound destination sign—**Division-Grand**. Westbound destination sign—**Division-Austin**.

NIGHT CAR SCHEDULE: Grand Avenue to Austin Avenue—Last car leaves Grand Avenue at 1:10 A. M.; last car leaves Austin Avenue at 1:10 A. M.

**ELSTON AVENUE**—From Lawrence Avenue (4800 north) and Kenneth Avenue (4500 west) southeast and east via Elston Avenue to Milwaukee Avenue to West Lake Street to North Dearborn Street to West Randolph Street, west on West Randolph Street to North Clinton Street to Milwaukee Avenue and then over incoming route. Northbound destination sign—**Elston-Lawrence**. Southbound destination sign—**Elston-Downtown**.

NIGHT CAR SCHEDULE: Northbound, 1:13 A. M. to 4:43 A. M., 30 minute service; southbound, 1:00 A. M. to 4:30 A. M., 30 minute service.

**EWING-BRANDON**—From 108th Street (10800 south) and Ewing Avenue (3632 east) south via Ewing Avenue to East 118th Street to Burley Avenue to Brandon Avenue to Brainard Avenue (Hegewisch) (3200 east at 13500 south). Northbound destination sign—**Ewing-108**. Southbound destination sign—**Brandon-Brainard**.

NIGHT CAR SCHEDULE: Last car leaves Brandon and Brainard Avenues at 12:25 A. M.; last car leaves 108th Street and Ewing Avenue at 12:05 A. M.

**FULLERTON AVENUE**—From North Central Avenue (5600 west) and Fullerton Avenue (2400 north) east on Fullerton Avenue to North Halsted Street at Lincoln Avenue (800 west at 2400 north). Eastbound destination sign—**Fullerton-Halsted**. Westbound destination sign—**Fullerton-Central**.

NIGHT CAR SCHEDULE: Eastbound, 1:04 A. M. to 1:43 A. M., 8 to 24 minute service; eastbound, 1:43 A. M. to 4:43 A. M., 30 minute service; westbound, 1:13 A. M. to 4:13 A. M., 30 minute service.

**FULTON-21st STREET**—From West 21st Street (2100 south) and Marshall Boulevard (2900 west) east, north and west via West 21st Street, to South Halsted Street to Canalport Avenue to South Canal Street to West Harrison Street, to Clinton Street to West Monroe Street to South Morgan Street to Fulton Street to North Western Avenue (2400 west at 300 north).

Eastbound destination sign—**Fulton-Western**. Westbound destination sign—**21-Marshall**.

NIGHT CAR SCHEDULE: Last car leaves 21st Street and Marshall Boulevard at 8:41 P. M.; last car leaves Fulton Street and Western Avenue at 9:01 P. M.

**GRAND AVENUE**—From West Grand Avenue (2400 north) and North Harlem Avenue (7200 west) southeast and east via West Grand Avenue to East Grand Avenue and Navy Pier (530 north at 500 east). Eastbound destination sign—**Navy Pier**.

Westbound destination sign—**Grand-Harlem**.

Short line cars on this route stop at Austin Avenue, westbound.

NIGHT CAR SCHEDULE: Lake Shore Drive to Harlem Avenue—Eastbound 1:00 A. M. to 5:00 A. M., 30 minute service; westbound, 1:00 A. M. to 5:00 A. M., 30 minute service.

**HALSTED STREET-DOWNTOWN**—Through Route No. 42—From 111th Street (11100 south) and South Sacramento Avenue (3000 west) east, north and northeast via 111th Street and Monterey Avenue to Vincennes Avenue to Summit Avenue to South Halsted Street to Archer Avenue to South Clark Street to North Clark Street to North Halsted Street to Waveland Avenue and Broadway (3700 north at 800 west). Returning south on Broadway to North Clark Street, thence over incoming route to starting point.

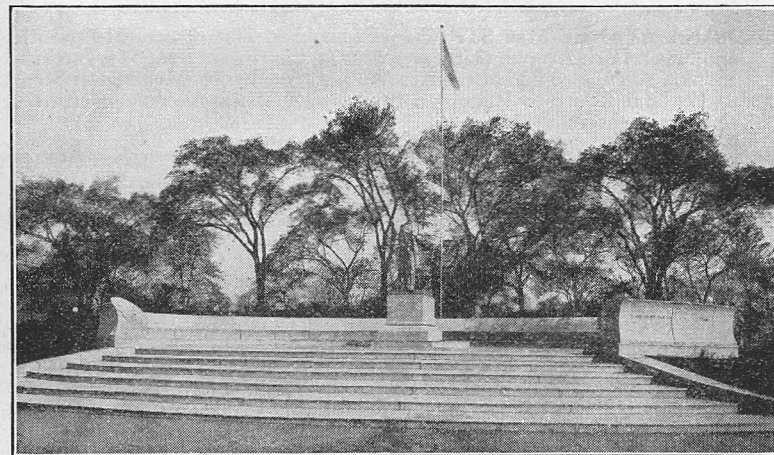
Northbound destination sign—**Halsted-Waveland**.

Southbound destination sign—**111-Sacramento**.

Short line cars on this route stop at Clark Street and Chicago Avenue, northbound, and at 79th Street, southbound. Cars marked No. 13 run from 63rd Street to Clark Street.

NIGHT CAR SCHEDULE: 79th and Halsted to 111th and Sacramento Avenue—Northbound, 1:42 A. M. to 4:41½ A. M., 30 minute service; southbound, 1:14½ A. M. to 4:12 A. M., 30 minute service; 79th and Halsted to Chicago Avenue and Wells Street, Northbound, 12:53 A. M. to 4:23 A. M., 15 minute service; southbound 1:12 A. M. to 5:27 A. M., 15 minute service.

**HALSTED STREET**—Through Route No. 8—From South Halsted Street (800 west) and West 79th Street (7900 south) north on South and North Halsted Street to Grace Street and Broadway (3800 north at 800 west). Northbound destination sign—**Halsted-Broadway**. Southbound destination sign—**Halsted-79**.



St. Gauden's Lincoln, Lincoln Park

**HALSTED STREET-26th STREET**—Through Route No. 18—From 26th Street (2600 south) and South Halsted Street (800 west) north on South Halsted Street to North Halsted Street to Broadway and Grace Street (3800 north at 800 west).

Northbound destination sign—**Halsted-Broadway**.

Southbound destination sign—**Halsted-26**.

NIGHT CAR SCHEDULE: 26th and Halsted Streets to Halsted Street and Broadway—Northbound, 1:14 A. M. to 1:53 A. M., 6 to 12 minute service; northbound, 1:53 A. M. to 4:53 A. M., 22 minute service; southbound, 1:08 A. M. to 4:08 A. M., 22 minute service.

**SOUTH HALSTED STREET EXTENSION**—From 111th Street (11100 south) and Vincennes Avenue (1665 west) southwest to 119th Street.

Northbound destination sign—**111-Vincennes**.

Southbound destination sign—**119-Vincennes**.

NIGHT CAR SCHEDULE: Last car leaves 111th Street at 12:31 A. M.; last car leaves 119th Street at 12:38 A. M.

**HAMMOND INDIANA**—From East 63rd Street (6300 south) and South Park Avenue (400 east) south and southeast via South Park Avenue to South Chicago Avenue to East 92nd Street to Ewing Avenue to Indianapolis Avenue (State Line), thence to Hammond, Ind.  
Northbound destination sign—**South Park-63**.  
Southbound destination sign—**Hammond**.

**NIGHT CAR SCHEDULE:** Last car leaves 63rd Street and South Park Avenue at 12:00 midnight; last car leaves Hammond at 11:28 P. M.; last car leaves Hammond at 12:00 midnight to 92nd Street and Commercial Avenue.

**HARRISON-ADAMS STREET**—From South Central Avenue (5600 west) and West Harrison Street (600 south) east via Harrison Street to Racine Avenue to Adams Street to Franklin Street to West Monroe Street to South Dearborn Street to West Adams Street and west-bound on Adams Street over incoming route.

Eastbound destination sign—**Adams-Downtown**.

Westbound destination sign—**Harrison-Central**.

Short line cars on this route stop at Cicero Avenue, westbound.

**NIGHT CAR SCHEDULE:** Monroe and Dearborn Streets to Central Avenue—Last car leaves Monroe and Dearborn Streets at 1:37 A. M.; last car leaves Central Avenue at 12:59 A. M.

**HARRISON STREET**—From South Central Avenue (5600 west) and West Harrison St. (600 south) via West Harrison Street to South Clinton Street to West Van Buren Street to South Dearborn Street to West Harrison Street and westbound on Harrison Street over incoming route.

East-bound destination sign—**Van Buren-Dearborn**.

Westbound destination sign—**Harrison-Central**.

Short line cars on this route stop at Cicero Avenue, westbound.

**NIGHT CAR SCHEDULE:** Van Buren and Dearborn Streets to Central Avenue—Westbound, 1:05 A. M. to 2:07½ A. M., 18 to 23 minute service; westbound, 2:27 A. M. to 4:57 A. M., 30 minute service; eastbound, 1:43 A. M. to 4:43 A. M., 30 minute service.

**INDIANA AVENUE-51st STREET**—From East 51st Street (5100 south) and South Park Avenue (350 east) west and north via East 51st Street to Indiana Avenue to 22nd Street to Wabash Avenue to Washington Street to Garland Court to Randolph Street to Wabash Avenue. Returning south over incoming route.

Northbound destination sign—**Indiana-Downtown**.

Southbound destination sign—**51-South Park**.

**NIGHT CAR SCHEDULE:** Randolph Street and Wabash Avenue to 51st Street and South Park Avenue—Southbound, 1:03 A. M. to 1:32 A. M., 11 to 18 minute service; southbound, 1:32 A. M. to 5:32 A. M., 15 minute service; northbound, 1:10 A. M. to 4:25 A. M., 15 minute service.

**INDIANA AVENUE-43rd STREET**—From Illinois Central R. R. (1200 east) and East 43rd Street (4300 south) west and north via 43rd Street to Indiana Avenue to 22nd Street to Wabash Avenue to Washington Street to Garland Court to Randolph Street to Wabash Avenue. Returning south over incoming route.

Northbound destination sign—**Indiana-Downtown**.

Southbound destination sign—**43-Oakenwald**.

**NIGHT CAR SCHEDULE:** Northbound, last car leaves 43rd Street and Oakenwald Avenue at 8:05 P. M.; southbound, last car leaves Randolph Street and Wabash Avenue at 7:26 P. M.

**INDIANA - LINCOLN AVENUE—Through Route No. 3**—From Illinois Central R. R. (1200 east) and East 47th Street (4700 south) west, north and north-west via East 47th

North State Street to Division Street to North Clark Street to Center Street to Lincoln Avenue to Berwyn Avenue (5300 north at 2500 west). Returning over same route to Lake and State Streets to Wabash Avenue to 22nd Street to Indiana Avenue, thence south over incoming route.

Northbound destination sign—**Lincoln-Berwyn**.

Southbound destination sign—**47-Lake Park**.

**NIGHT CAR SCHEDULE:** Northbound, last car leaves 47th Street and Lake Park at 12:14 midnight; southbound, last car leaves Lincoln Avenue and Berwyn Street at 12:11 A. M.

**IRVING PARK BOULEVARD**—From Neenah Avenue (6500 west) and Irving Park Boulevard (4000 north, Dunning) east to Broadway (4000 north at 800 west).

Eastbound destination sign—**Irving Park-Broadway**.

Westbound destination sign—**Irving Park-Neenah**.

**NIGHT CAR SCHEDULE:** Westbound, 1:03 A. M., 1:18 A. M., 1:37 A. M. to 4:37 A. M., 20 minute service; eastbound, 12:58 A. M., 1:15 A. M. to 5:15 A. M., 20 minute service.

**KEDZIE AVENUE-CALIFORNIA AVENUE**—From West 67th Street (6700 south) and South Kedzie Avenue (3200 west) north via South Kedzie Avenue to North Kedzie Avenue to West Chicago Avenue to North California Avenue to Roscoe Street (2800 west at 3400 north).

Northbound destination sign—**California-Roscoe**.

Southbound destination sign—**Kedzie-67**.

**NIGHT CAR SCHEDULE:** Roscoe Street and California Avenue—Southbound, 1:19 A. M. to 4:19 A. M., 30 minute service. Bryn Mawr and Kedzie Avenues—Southbound, 1:20 A. M. to 4:20 A. M., 30 minute service. 67th Street and Kedzie Avenue—Northbound, 1:35 A. M. to 4:05 A. M., 30 minute service.

**KEDZIE AVENUE—Through Route No. 17**—From South Kedzie Avenue (3200 west) and West 67th Street (6700 south) north via South Kedzie Avenue to North Kedzie Avenue to West Chicago Avenue to North California Avenue to Milwaukee Avenue to North Kedzie Avenue to Bryn Mawr Avenue (3200 west at 5600 north).

Northbound destination sign—**Kedzie-Bryn Mawr**.

Southbound destination sign—**Kedzie-67**.

**NIGHT CAR SCHEDULE:** 47th Street and Kedzie Avenue to California and Milwaukee Avenues—1:00 A. M. to 4:30 A. M., 15 minute service. Every second car goes through to Roscoe Street and California Avenue or Bryn Mawr Avenue and Kedzie Avenue on the north side, and 67th Street and Kedzie Avenue or 47th Street and Kedzie Avenue on the south side.

**LAKE-STATE THROUGH ROUTE No. 16**—See **State-Lake Through Route No. 16**.

**LARAMIE AVENUE**—From South Laramie Avenue (5200 west) and West Harrison Street (600 south) north via South Laramie and North Laramie Avenues to West Lake Street (350 north at 5200 west).

Northbound destination sign—**Laramie-Lake**.

Southbound destination sign—**Laramie-Harrison**.

**NIGHT CAR SCHEDULE:** Last car leaves Lake Street at 11:00 P. M., last car leaves Harrison Street at 11:07 P. M.

**LAWRENCE AVENUE**—From Austin Avenue (6000 west) and Lawrence Avenue (4800 north, Jefferson) east to Broadway (4800 north at 1200 west).

Eastbound destination sign—**Lawrence-Broadway**.

Westbound destination sign—**Lawrence-Austin**.

**NIGHT CAR SCHEDULE:** Westbound, 1:00 A. M. to 1:30 A. M., 10 to 20 minute service; westbound, 1:30 A. M. to 4:30 A. M., 30 minute service; eastbound, 1:00 A. M. to 2:30 A. M., 10 to 20 minute service; eastbound, 2:30 A. M. to 4:30 A. M., 30 minute service.

**LINCOLN AVENUE-BOWMANVILLE**—From Berwyn Avenue (5300 north) and Lincoln Avenue (2500 west) south and southeast via Lincoln Avenue to Center Street to North Clark Street to North Wells Street to Illinois Street, through LaSalle Street tunnel to West Madison Street to North Wells Street then north on North Wells Street, returning over incoming route.

Northbound destination sign—**Lincoln-Berwyn**.

Southbound destination sign—**Wells-Downtown**.

**NIGHT CAR SCHEDULE:** Madison and LaSalle Streets to Berwyn Avenue—Northbound, 1:07 A. M. to 1:39 A. M., 12 minute service; northbound, 1:39 A. M. to 5:39 A. M., 20 minute service; southbound, 1:01 A. M., to 5:01 A. M., 20 minute service.



University of Chicago

Street to Indiana Avenue to 18th Street to South State Street to

**LINCOLN-ROSEHILL**—From Ravenswood Avenue (1800 west) and Cemetery Drive (5740 north) south, west and southeast via Ravenswood Avenue to Balmoral Avenue to North Damen Avenue to Lincoln Avenue to Center Street to North Clark Street to North Wells Street to West Illinois Street, through LaSalle Street tunnel to West Madison Street to North Wells Street, then north on North Wells Street, returning over incoming route. Northbound destination sign—**Ravenswood-Rosehill**. Southbound destination sign—**Wells-Downtown**.

**NIGHT CAR SCHEDULE:** Irving Park Boulevard to Rosehill Cemetery—Northbound, 1:20 A. M. to 4:50 A. M., 30 minute service; southbound, 1:05 A. M. to 4:35 A. M., 30 minute service.

**LINCOLN-INDIANA THROUGH ROUTE No. 3**—See **Indiana-Lincoln Through Route No. 3**.

**MADISON STREET**—From West Madison Street (1 north) and Austin Avenue (6000 west) east to South Dearborn Street to West Monroe Street. Return route on West Monroe Street to South Clinton Street to West Madison Street to starting point.

Eastbound destination sign—**Madison-Downtown**.

Westbound destination sign—**Madison-Austin**.

**NIGHT CAR SCHEDULE:** Monroe and Dearborn Streets to Austin Avenue—Westbound, 1:20 A. M. to 5:20 A. M., 10 minute service; eastbound, 1:01 A. M. to 4:41 A. M., 10 minute service.

Monroe and Dearborn Streets to Crawford Avenue via 5th Avenue—Westbound, last car leaves Monroe and Dearborn Streets at 11:31½ P. M.; eastbound, last car leaves Crawford Avenue at 12:40 A. M.

**MADISON STREET-FIFTH AVENUE**—From South Crawford Avenue (4000 west) and Fifth Avenue (600 south) northeast and east via Fifth Avenue to Madison Street to Dearborn Street to Monroe Street. Return route west on West Monroe Street to South Clinton Street to West Madison Street to starting point.

Eastbound destination sign—**Madison-Downtown**.

Westbound destination sign—**Fifth Avenue-Crawford**.

**NIGHT CAR SCHEDULE:** 5th Avenue and Madison Street to 5th and Crawford Avenues—Westbound, last car leaves 5th Avenue and Madison Street at 2:00 A. M.; eastbound, last car leaves 5th and Crawford Avenues at 1:50 A. M.

**MILWAUKEE-DEVON**—From Devon Avenue (6400 north) and Milwaukee Avenue (6400 west), southeast and east via Milwaukee Avenue to Desplains Street to West Washington Street to North Dearborn Street to West Madison Street. Return route west on West Madison Street to North Clinton Street to Milwaukee Avenue and then over incoming route.

Northbound destination sign—**Milwaukee-Devon**.

Southbound destination sign—**Milwaukee-Downtown**.

Short line cars stop at Central Avenue, Northbound.

**NIGHT CAR SCHEDULE:** Southbound, from Devon Avenue, 1:06 A. M. to 2:21 A. M., 15 minute service; 2:21 A. M. to 4:21 A. M., 30 minute service; from Gale Avenue, 1:02 A. M. to 4:32 A. M., 15 minute service; northbound, from Madison and Dearborn Streets to Devon Avenue, 1:05 A. M. to 3:35 A. M., 30 minute service; 3:35 A. M. to 5:35 A. M., 15 minute service; from Madison and Dearborn Streets to Gale Avenue, 1:05 A. M. to 5:35 A. M., 15 minute service.

**MILWAUKEE AVENUE-ARMITAGE AVENUE**—From Armitage Avenue (2000 north) and LeClaire Avenue (5100 west) east and southeast via Armitage Avenue to Milwaukee Avenue to North Desplains Street to West Washington Street to North Dearborn Street to West Madison Street. Return route west on West Madison Street to North Clinton Street to Milwaukee Avenue and then over incoming route.

Northbound destination sign—**Armitage-Grand**.

Southbound destination sign—**Armitage-Downtown**.

**NIGHT CAR SCHEDULE:** From Grand and Armitage Avenues—Eastbound, last car leaves for downtown at 12:10 A. M.; westbound, last car leaves Madison and Dearborn Streets at 12:50½ A. M. For all night service see Armitage-Center line.

**MONTROSE AVENUE**—From North Knox Avenue (4600 west) and Montrose Avenue (4400 north) east to Broadway (4400 north at 1000 west).

Eastbound destination sign—**Montrose-Broadway**.

Westbound destination sign—**Montrose-Knox**.

**NIGHT CAR SCHEDULE:** Westbound, 1:05 A. M., 1:30 A. M., 2:00 A. M. to 5:00 A. M., 60 minute service; eastbound, 1:30 A. M. to 4:30 A. M., 60 minute service.

**MORGAN-RACINE-SANGAMON—Through Route No. 23**—From West Pershing Road (3900 south) and South Morgan Street (1000 west) north

and west on South Morgan Street to West 31st Street to Throop Street to West 21st Street to South Racine Avenue to West Adams Street to South Sangamon Avenue to North Sangamon Avenue to West Austin Avenue to North Racine Avenue to West Erie Street to North Ashland Avenue. Returning same route.

Northbound destination sign—**Erie-Ashland**.

Southbound destination sign—**Morgan-Pershing**.

Short line cars on this route stop at 21st Street and **Racine Avenue**, southbound.

**NIGHT CAR SCHEDULE:** Pershing Road and Morgan Street to Erie Street and Ashland Avenue—Northbound, last car leaves Pershing Road and Morgan Street at 9:40 P. M.; southbound, last car leaves Erie Street and Ashland Avenue at 9:04 P. M.

21st Street and Racine Avenue to Erie Street and Ashland Avenue—Northbound, last car leaves 21st Street and Racine Avenue at 1:43 A. M.; southbound, last car leaves Erie Street and Ashland Avenue at 1:45 A. M.

**NOBLE STREET**—From West North Avenue (1600 north) and North Ashland Avenue (1600 west) east and south via West North Avenue to Holt Street to Blackhawk Street to Noble Street to Milwaukee Avenue (1037 north at 1401 west).

Northbound destination sign—**Noble-Ashland**.

Southbound destination sign—**Noble-Milwaukee**.

**NIGHT CAR SCHEDULE:** Southbound, last car leaves Ashland and North Avenues at 8:32 P. M.; northbound, last car leaves Noble Street and Milwaukee Avenue at 8:40 P. M.

**NORTH AVENUE**—From North Austin Avenue (6000 west) and North Avenue (1600 north) east to North Clark Street (100 west at 1600 north).

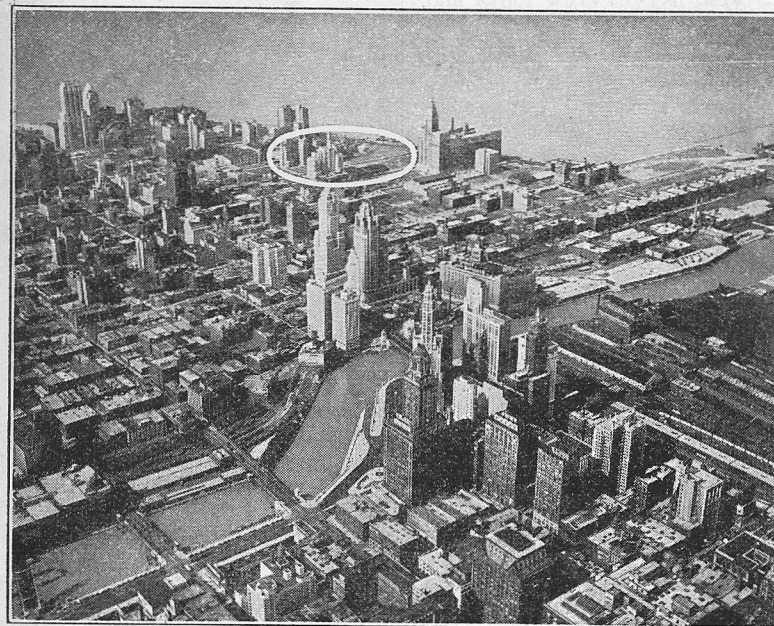
Eastbound destination sign—**North-Clark**.

Westbound destination sign—**North-Austin**.

Short line cars on this route stop at Cicero Avenue, westbound.

**NIGHT CAR SCHEDULE:** Eastbound, 1:30 A. M. to 4:00 A. M., 30 minute service; westbound, 2:08 A. M. to 4:38 A. M., 30 minute service.

**OGDEN AVENUE**—From West 25th Street (2500 south) and South Laramie Avenue (5200 west) east and northeast via West 25th Street to South Cicero Avenue to Ogden Avenue to West Randolph Street to North Dearborn Street to West Washington Street, west-bound on West Wash-



*Partial View of River and Lake Front. McKinlock Campus, Northwestern University, indicated by white circle*

ington Street to North Desplains Street to West Randolph Street and then over incoming route.

Eastbound destination sign—**Ogden-Downtown.**

Westbound destination sign—**25-Laramie.**

Short line cars on this route stop at Crawford Avenue, westbound.

NIGHT CAR SCHEDULE: Southbound, 1:11 A. M. to 5:11 A. M., 30 minute service; northbound, 1:01½ A. M. to 4:31½ A. M., 30 minute service.

**PERSHING ROAD (39th Street)**—From Root Street (4150 south, Union Stock Yards) and South Halsted Street (800 west) east and north via Root Street to South Wallace Street to West Pershing Road to East Pershing Road and Cottage Grove Avenue (3900 south at 800 east).

Eastbound destination sign—**Pershing-Cottage.**

Westbound destination sign—**Stock Yards.**

NIGHT CAR SCHEDULE: Eastbound, 1:20 A. M. to 4:50 A. M., 30 minute service; westbound, 1:05 A. M. to 4:35 A. M., 30 minute service.

**PERSHING ROAD EXTENSION**—From West Pershing Road (3900 south) and Ashland Avenue (1600 west) west to West Pershing Road (3900 south) and Western Avenue (2400 west).

Eastbound destination sign—**Ashland.**

Westbound destination sign—**Western.**

NIGHT CAR SCHEDULE: Westbound, last car leaves Ashland Avenue at 7:12 P. M.; eastbound, last car leaves Western Avenue at 7:18 P. M.

**RIVERDALE**—From 119th Street (11900 south) and South Michigan Avenue (50 east) south and east via South Michigan Avenue to East 127th Street to Illinois Central R. R. to East 134th Street to Indiana Avenue to Leyden Avenue to 138th Street (13800 south at 300 east).

Northbound destination sign—**Michigan-119.**

Southbound destination sign—**Leyden-138.**

NIGHT CAR SCHEDULE: Northbound, last car leaves 138th Street and Leyden Avenue at 11:55 P. M.; southbound, last car leaves 119th Street and Michigan Avenue at 11:39 P. M.

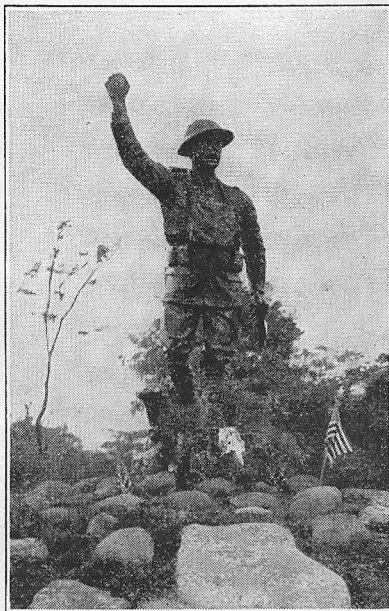
**RIVERVIEW-LARRABEE**—From North Western Avenue (2400 west, Riverview Park) and Roscoe Street (3400 north) east and south via Roscoe Street to North Damen Avenue to Belmont Avenue to Lincoln Avenue to Larrabee Street to Chicago Avenue to Kingsbury Avenue to West Erie Street to North Franklin Street to West Kinzie Street to North Dearborn Street to West Randolph Street; returning west on West Randolph Street to North Wells Street to West Kinzie Street and north over incoming route.

Northbound destination sign—**Roscoe-Western.**

Southbound destination sign—**Downtown.**

NIGHT CAR SCHEDULE: Northbound, last car leaves Randolph and Dearborn Streets at 2:03 A. M.; southbound, last car leaves Roscoe Street and Western Avenue at 1:30 A. M.

**ROOSEVELT ROAD-DOWNTOWN**—From South Austin Avenue (6000 west) and West Roosevelt Road (1200 south) east and north on West Roosevelt Road to South Canal Street to Polk Street to South Wells Street to West Adams Street to South Dearborn Street to West Van Buren Street to South Wells Street to West Polk Street to South Canal Street to West Roosevelt Road, thence west to starting point.



*World War Veterans' Monument,  
Lincoln Park*

Eastbound destination sign—**Roosevelt-Downtown.**

Westbound destination sign—**Roosevelt-Austin.**

Short line cars on this route stop at Crawford and Cicero Avenues, westbound.

NIGHT CAR SCHEDULE: Cicero Avenue to Canal Street and Roosevelt Road—Eastbound, 1:38 A. M. to 4:38 A. M., 15 minute service.

Every other car to Adams and Dearborn Streets or Roosevelt Road and Wabash Avenue at east end.

Every other car to Cicero Avenue or Austin Avenue at west end.

Adams and Dearborn Streets to Canal Street and Roosevelt Road—Westbound, 1:14 A. M. to 5:14 A. M., 30 minute service.

Roosevelt Road and Wabash Avenue to Canal Street and Roosevelt Road—Westbound, 1:34 A. M. to 5:04 A. M., 30 minute service.

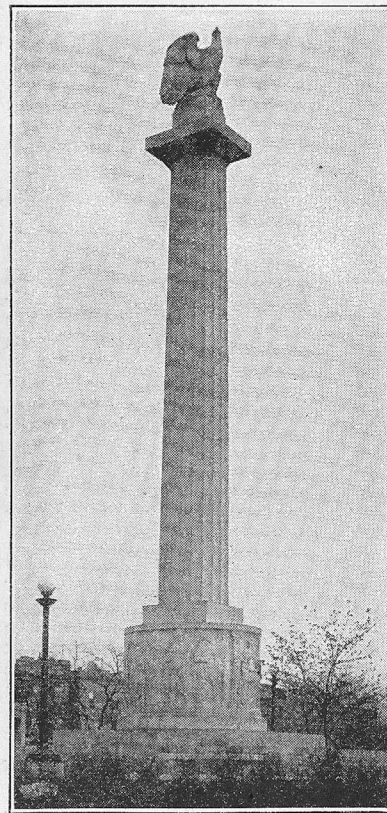
**ROOSEVELT ROAD-WABASH AVENUE**—From South Austin Avenue (6000 west) and West Roosevelt Road (1200 south) east via West Roosevelt Road to South Wabash Avenue and East Roosevelt Road (1200 south at 50 east).

Eastbound destination sign—**Roosevelt-Wabash.**

Westbound destination sign—**Roosevelt-Austin.**

Short line cars on this route stop at Cicero and Crawford Avenues, westbound.

NIGHT CAR SCHEDULE: Austin Avenue to Cicero Avenue—Eastbound, 1:31 A. M. to 4:31 A. M., 30 minute service.



*Illinois Centennial Monument,  
Logan Square*

West Division Street to North Wells Street (200 west at 1200 north).

Northbound destination sign—**Division-Wells.**

Southbound destination sign—**119-Morgan.**

Short line cars on this route stop at 63rd Street and 79th Street, southbound.

**SOUTH DEERING-SOUTH CHICAGO**—From East 63rd Street (6300 south) and Dorchester Avenue (1400 east) south and east via Dorchester Avenue to East 64th Street to Stony Island Avenue to East 73rd Street to Exchange Avenue to 75th Street to Coles Avenue to East 79th Street to Brandon Avenue to East 83rd Street to Burley Avenue to 87th Street to Buffalo Avenue to East 92nd Street to Commercial Avenue to 104th Street to Torrence Avenue to East 124th Street (12400 south at 2650 east).

Northbound destination sign—**Dorchester-63.**

Southbound destination sign—**Torrence-124.**

Short line cars on this route stop at 112th Street and Torrence Avenue, southbound.

NIGHT CAR SCHEDULE: 63rd Street and Dorchester Avenue to 112th Street and Torrence Avenue—Southbound, 1:34 A. M. to 4:54 A. M., 50 minute service; northbound, 1:40 A. M. to 4:10 A. M., 50 minute service. Southbound, last car leaves 112th Street and Torrence Avenue at 12:11 A. M.; northbound, last car leaves 124th Street and Torrence Avenue at 12:41 A. M.

**STATE STREET**—From West 120th Street (12000 south) and South Morgan Street (1000 west) east and north via 120th Street to Halsted Street to 119th Street to South Michigan Avenue to 95th Street to South State Street to North State Street to

**NIGHT CAR SCHEDULE:** 79th and State Streets to Division and Wells Streets—Northbound and southbound, 1:11 A. M. to 4:11 A. M., 15 minute service; 119th and Morgan Streets to 79th and State Streets, northbound, 1:12 A. M. to 4:42 A. M., 30 minute service. Every other car goes through to 119th and Morgan Streets.

**STATE-LAKE**

**Through Route No. 16**—From 63rd Street (6300 south) and South State Street (1 east) north and west via South State Street to North State Street to West Lake Street to North Austin Avenue (6000 west at 400 north).

Northbound destination sign—**Lake-Austin.**

Southbound destination sign—**State-63 and State-Van Buren.**

Through Route service maintained until evening when Van Buren Street becomes the south terminal.

Last Southbound Through Route trip leaves Austin Avenue at 6:49 P. M. Last northbound Through Route Trip leaves 63rd Street at 6:58½ P. M.

**NIGHT CAR SCHEDULE:** Last car leaves Austin Avenue eastbound at 12:30 A. M. and Van Buren Street northbound at 1:13 A. M.

**STONY ISLAND AVENUE**—From Stony Island Avenue (1600 east) and East 93rd Street (9300 south) north and northwest via Stony Island Avenue to East 56th Street to Lake Park Avenue to 47th Street to Cottage Grove Avenue to Indiana Avenue to 18th Street to Wabash Avenue to Washington Street to Garland Court to Randolph Street to Wabash Avenue, returning south over incoming route.

Northbound destination sign—**Downtown.**

Southbound destination sign—**Stony Island-93.**

Short line cars on this route stop at 64th Street and 80th Street, southbound.

**NIGHT CAR SCHEDULE:** 47th and Cottage Grove to 93rd and Stony Island Avenue. Northbound 12:32 A. M. to 4:48 A. M., 15 minute service; southbound leaving 38th and Cottage Grove Avenue from 1:19 A. M. to 2:18 A. M., then 47th Street from 2:38 A. M. to 4:53 A. M.

**TAYLOR-SEDGWICK-SHEFFIELD**—From West Taylor Street (1000 south) and South Western Avenue (2400 west) east and north via Taylor Street to South Canal Street to Polk Street to Wells Street to Kinzie Street to Orleans Street to West Division Street to Sedgwick Street to Lincoln Avenue to Sheffield Avenue to North Clark Street (3500 north at 1000 west). Return over same route to Orleans Street to Austin Avenue to Wells Street, thence south over incoming route.

Northbound destination sign—**Sheffield-Clark.**

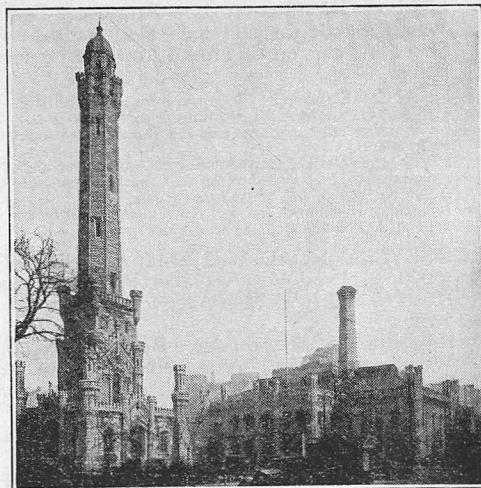
Southbound destination sign—**Taylor-Western.**

**NIGHT CAR SCHEDULE:** Northbound 1:15 A. M. to 4:45 A. M., 30 minute service; southbound, 1:00 A. M. to 4:30 A. M., 30 minute service.

**VAN BUREN STREET**—From South Kedzie Avenue (3200 west) and West Van Buren Street (400 south) east via West Van Buren Street to South Clinton Street to West Adams Street to South Dearborn Street to West Van Buren Street and westbound on Van Buren Street over incoming route.

Eastbound destination sign—**Van Buren-Downtown.**

Westbound destination sign—**Van Buren-Kedzie.**



*Old Water Tower, relic of Chicago Fire, Chicago Avenue at Michigan*

**NIGHT CAR SCHEDULE:** Westbound, 1:03 A. M. to 2:12 A. M., 15 to 24 minute service; westbound, 2:12 A. M. to 4:42 A. M., 30 minute service; eastbound, 1:45 A. M. to 4:15 A. M., 30 minute service.

**WALLACE STREET AND RACINE AVENUE**—From West 87th Street (8700 south) and South Racine Avenue (1200 west) north and east via Racine Avenue to West 47th Street to South Halsted Street to West Pershing Road to Wallace Street to West 29th Street to Canal Street to Archer Avenue to South State Street to Polk Street to Dearborn Street to Lake Street to North State Street. Returning south on North State Street to South State Street to Archer Avenue, to starting point.

Northbound destination sign—**Racine-Downtown.**

Southbound destination sign—**Racine-87.**

**NIGHT CAR SCHEDULE:** Southbound, 1:01 A. M. to 1:25 A. M., 24 minute service; southbound, 1:25 A. M. to 5:25 A. M., 30 minute service; northbound, 12:55 A. M. to 4:25 A. M., 30 minute service.

**WEBSTER-RACINE**—From Fullerton Avenue (2400 north) and Racine Avenue (1200 west) south and east via Racine Avenue to Webster Avenue to Lincoln Avenue and Larrabee Street.

Northbound destination sign—**Racine-Fullerton.**

Southbound destination sign—**Webster-Lincoln.**

**NIGHT CAR SCHEDULE:** Last car leaves Fullerton and Racine Avenues at 12:27 A. M.

**WESTERN AVENUE—Through Route No. 10**—From West 75th Street (7500 south) and Western Avenue (2400 west) north on Western Avenue to Howard Street (7600 north at 2400 west).

Northbound destination sign—**Western-Howard.**

Southbound destination sign—**Western-75.**

Short line cars on this route stop at Archer Avenue, 63rd Street, southbound; and Roscoe Street and Lincoln Avenue, northbound.

**NIGHT CAR SCHEDULE:** Northbound, 1:00 A. M. to 4:30 A. M., 30 minute service; southbound, 1:00 A. M. to 4:30 A. M., 30 minute service.

**WHITING AND EAST CHICAGO**—From East 63rd Street (6300 south) and South Park Avenue (400 east) south and southeast via South Park Avenue to South Chicago Avenue to 91st Street to Commercial Avenue to South Chicago Avenue to East 95th Street to Ewing Avenue to 106th Street to Indianapolis Avenue (State Line) thence to Whiting and East Chicago, Indiana.

Northbound destination sign—**South Park-63.**

Southbound destination sign—**Whiting-E. Chicago.**

**NIGHT CAR SCHEDULE:** Last car leaves 63rd Street and South Park Avenue at 1:00 A. M.; last car leaves East Chicago at 12:05 A. M.; last car leaves East Chicago to 92nd Street and Commercial Avenue at 1:00 A. M.

**WINDSOR PARK-SOUTH CHICAGO**—From East 63rd Street (6300 south) and Dorchester Avenue (1400 east) south and east via Dorchester Avenue to East 64th Street to Stony Island Avenue to East 73rd Street to Exchange Avenue to East 75th Street to Coles Avenue to East 79th Street to Exchange Avenue to East 83rd Street to Commercial Avenue to 92nd Street to Baltimore Avenue to 93rd Street to Commercial Avenue (3000 east at 9300 south).

Northbound destination sign—**Dorchester-63.**

Southbound destination sign—**93-So. Chicago.**

**NIGHT CAR SCHEDULE:** 63rd and Dorchester Avenue to 112th and Torrence Avenue—Northbound, 2:05 A. M. to 4:35 A. M., 50 minute service; southbound, 1:59 A. M. to 4:29 A. M., 50 minute service.

**14th STREET-16th STREET**—From West 16th Street (1600 south) and South Kenton Avenue (4600 west) east via West 16th Street to South Kedzie Avenue to West Roosevelt Road to South Damen Avenue to West 14th Street to South Canal Street to West Roosevelt Road to East Roosevelt Road and South Wabash Avenue (1200 south at 48 east).

Eastbound destination sign—**Roosevelt-Wabash.**

Westbound destination sign—**16-Kenton.**

**NIGHT CAR SCHEDULE:** Eastbound, 1:29 A. M. to 2:21 A. M., 24 to 28 minute service; eastbound, 2:21 A. M. to 4:50 A. M., 30 minute service; westbound, 2:33 A. M., to 4:33 A. M., 30 minute service.

**18th STREET**—From Blue Island Avenue (2500 south) and South Leavitt Street (2200 west) north and east via South Leavitt Street and West 18th Street to South State Street (1800 south at 1 west).



Eastbound destination sign—**18-State**.

West-bound destination sign—**Blue Island-Leavitt**.

NIGHT CAR SCHEDULE: Eastbound, 1:25 A. M. to 4:55 A. M., 30 minute service; westbound, 1:25 A. M. to 4:25 A. M., 30 minute service.

**22nd STREET**—From West 22nd Street (2200 south) and South Kenton Avenue (4600 west) east via West 22nd Street to East 22nd Street and South Wabash Avenue (2200 south at 50 east).

Eastbound destination sign—**22-Wabash**.

Westbound destination sign—**22-Kenton**.

NIGHT CAR SCHEDULE: Kenton Avenue to Wabash Avenue—Eastbound, 11:55 P. M. to 5:10 A. M., 15 minute service; westbound, 12:29 A. M. to 5:29 A. M., 15 minute service.

**22nd STREET-LAWNDALE AVENUE**—From West 33rd Street (3300 south) and South Lawndale Avenue (3700 west) north and east via South Lawndale Avenue to West 25th Street to South Kedzie Avenue to West 22nd Street to East 22nd Street and Wabash Avenue (2200 south at 50 east).

Eastbound destination sign—**22-Wabash**.

Westbound destination sign—**Lawndale-32**.

NIGHT CAR SCHEDULE: Lawndale Avenue and 33rd Street to Wabash Avenue—Westbound, last car leaves Wabash Avenue at 12:11 A. M.; eastbound, last car leaves Lawndale Avenue and 33rd Street at 11:36 P. M.

**26th STREET**—From West 26th Street (2600 south) and South Halsted Street (800 west) east via West 26th Street to East 26th Street and Cottage Grove Avenue (2600 south at 400 east).

Eastbound destination sign—**26-Cottage**.

Westbound destination sign—**26-Halsted**.

NIGHT CAR SCHEDULE: Westbound, last car leaves Cottage Grove Avenue at 12:26 A. M.; eastbound, last car leaves Halsted Street at 12:15 A. M.

**31st STREET**—From West 31st Street (3100 south) and Archer Avenue (1400 west) east via West 31st Street to Illinois Central R. R. (3100 south at 600 east).

Eastbound destination sign—**31-Lake Park**.

Westbound destination sign—**Pitney-Archer**.

NIGHT CAR SCHEDULE: Eastbound, 1:00 A. M. to 5:00 A. M., 15 minute service; westbound, 1:07 A. M. to 5:22 A. M., 15 minute service.

**35th STREET**—From West 36th Street (3600 south) and South Kedzie Avenue (3200 west) east via West 36th Street to South California Avenue to West 35th Street to Cottage Grove Avenue (3500 south at 800 east).

Eastbound destination sign—**35-Cottage**.

Westbound destination sign—**36-Kedzie**.

NIGHT CAR SCHEDULE: Eastbound, 1:23 A. M. to 4:53 A. M., 30 minute service; westbound, 1:55 A. M. to 5:25 A. M., 30 minute service.

**43rd STREET-ROOT STREET**—From South Halsted (800 west) and Root Street (4150 south) east on Root Street to South State Street to East 43rd Street to Illinois Central R. R. (1200 east at 4300 south).

Eastbound destination sign—**43-Oakenwald**.

Westbound destination sign—**Stock Yards**.

NIGHT CAR SCHEDULE: Eastbound, 1:00 A. M. to 5:00 A. M., 20 minute service; westbound, 1:18 A. M. to 5:18 A. M., 20 minute service.

**47th STREET**—From South Kedzie Avenue (3200 west) and 47th Street (4700 south) east to Illinois Central R. R. (4700 south at 1400 east).

Eastbound destination sign—**47-Lake Park**.

Westbound destination sign—**47-Kedzie**.

Short line cars on this route stop at Cottage Grove Avenue, eastbound.

NIGHT CAR SCHEDULE: Eastbound, 1:03 A. M. to 4:48 A. M., 15 minute service; westbound, 1:08 A. M. to 4:53 A. M., 15 minute service.

**51st STREET**—From West 51st Street (5100 south) and South Central Park Avenue (3600 west) east on West 51st Street to East 51st Street to South Park Avenue (400 east at 5100 south).

Eastbound destination sign—**51-South Park**.

Westbound destination sign—**51-Central Park**.

NIGHT CAR SCHEDULE: Eastbound, 12:12 A. M. to 4:52 A. M., 20 minute service; westbound, 12:36 A. M. to 5:16 A. M., 20 minute service.

**59th STREET-61st STREET**—From South Central Park Avenue (3600 west) and West 59th Street (5900 south) east via West 59th Street to South

State Street to East 61st Street to Blackstone Avenue to East 60th Street (6000 south at 1450 east).

Eastbound destination sign—**Blackstone-60**.

Westbound destination sign—**59-Central Park**.

NIGHT CAR SCHEDULE: Eastbound, 1:03 A. M. to 5:03 A. M., 15 minute service; westbound, 1:02 A. M. to 5:17 A. M., 15 minute service.

**63rd STREET**—From West 63rd Place (6350 south) and South Melvina Avenue (6200 west) east via West 63rd Place to South Central Avenue to West 63rd Street to East 63rd Street and Stony Island Avenue (6300 south at 1600 east).

Eastbound destination sign—**63-Stony Island**.

Westbound destination sign—**63-Melvina**.

Short line cars on this route stop at Western Avenue, Central Park Avenue and Cicero Avenue, westbound.

NIGHT CAR SCHEDULE: Stony Island Avenue to Central Park Avenue—Westbound, 1:01 A. M. to 4:46 A. M., 15 minute service; Central Park Avenue to Stony Island Avenue; eastbound, 1:09 A. M. to 4:39 A. M., 15 minute service; every other car goes through to Melvina Avenue; Melvina Avenue to Central Park Avenue, 1:26 A. M. to 4:26 A. M., 30 minute service.

**67th STREET-69th STREET**—From West 71st Street (7100 south) and South California Avenue (2800 west) east via West 71st Street to South Western Avenue to West 69th Street to Keefe Avenue to Rhodes Avenue to East 67th Street to South Shore Drive (6700 south at 2400 east).

Eastbound destination sign—**67-Oglesby**.

Westbound destination sign—**71-California**.

Short line cars on this route stop at 69th Street and Western Avenue, westbound.

NIGHT CAR SCHEDULE: South Shore Drive to 71st and California Avenue. Westbound, 12:35 A. M. to 5:35 A. M., 15 minute service. Eastbound, 12:06 A. M. to 4:51 A. M., 15 minute service.

**71st STREET**—From Wentworth Avenue (200 west) and Vincennes Avenue at 73rd Street (7300 south) northeast and east via Vincennes Avenue to West 71st Street to East 71st Street to Cottage Grove Avenue (7100 south at 800 east).

Eastbound destination sign—**71-Cottage**.

Westbound destination sign—**Vincennes-73**.

NIGHT CAR SCHEDULE: Last car leaves Cottage Grove Avenue at 1:05 A. M.; last car leaves 73rd Street and Vincennes Avenue at 12:53 A. M.

**75th STREET**—From West 74th Street (7400 south) and South Ashland Avenue (1600 west) east via West 74th Street to Eggleston Avenue to West 75th Street to East 75th Street and Lake Michigan (Manhattan Beach, 7500 south at 2800 east).

Eastbound destination sign—**75-Lake**.

Westbound destination sign—**74-Ashland**.

NIGHT CAR SCHEDULE: Westbound, 1:15 A. M. to 5:15 A. M., 30 minute service; eastbound, 1:17 A. M. to 4:47 A. M., 30 minute service.

**79th STREET**—From West 79th Street (7900 south) and South Western Avenue (2400 west) east on West 79th Street to East 79th Street and Lake Michigan (Rocky Ledge Beach, 7900 south at 3300 east).

Eastbound destination sign—**79-Brandon**.

Westbound destination sign—**79-Western**.

NIGHT CAR SCHEDULE: Eastbound, last car leaves Western Avenue at 2:00 A. M.; westbound, last car to Western Avenue leaves the lake at 1:20 A. M.; eastbound, Ashland Avenue to the lake, 1:20 A. M. to 4:50 A. M., 30 minute service; westbound, the lake to Ashland Avenue, 1:20 A. M. to 5:20 A. M., 30 minute service.

**87th STREET**—From Stony Island Avenue (1600 east) and East 87th Street (8700 south) to East 87th Street and Commercial Avenue (8700 south at 3000 east).

Eastbound destination sign—**87-Commercial**.

Westbound destination sign—**87-Stony Island**.

NIGHT CAR SCHEDULE: Last car leaves Stony Island Avenue at 1:00 A. M.; last car leaves Commercial Avenue at 1:10 A. M.

**93rd STREET-95th STREET**—From East 95th Street (9500 south) and South State Street (1 east) east via East 95th Street to Cottage Grove Avenue to 93rd Street to South Chicago Avenue to Exchange Avenue to East 92nd Street to Buffalo Avenue to East 89th Street to Illinois Steel Co. Mills (3400 east at 8900 south).

Eastbound destination sign—**89-Strand.**

Westbound destination sign—**95-State.**

NIGHT CAR SCHEDULE: Eastbound, 1:03 A. M. to 5:03 A. M., 30 minute service; westbound, 1:12 A. M. to 4:32 A. M., 30 minute service.

**103rd STREET**—From 103rd Street (10300 south) and Vincennes Avenue (1300 west, Washington Heights) east via 103rd Street to Cottage Grove Avenue (10300 south at 700 east).

Eastbound destination sign—**103-Cottage.**

Westbound destination sign—**103-Vincennes.**

NIGHT CAR SCHEDULE: Last car leaves Cottage Grove Avenue at 1:30 A. M.; last car leaves Vincennes Avenue at 1:45 A. M.

**106th STREET**—From Torrence Avenue (2600 east) and 106th Street (10600 south) east via East 106th Street to State Line (4050 east at 10600 south).

Eastbound destination sign—**106-State Line.**

Westbound destination sign—**106-Torrence.**

NIGHT CAR SCHEDULE: Last car leaves Torrence Avenue at 11:38 P. M.; last car leaves State Line at 12:08 P. M.

**111th STREET**—From West 111th Street (11100 south) and Vincennes Avenue (1665 west) east via East 111th Street to Cottage Grove Avenue (11100 south at 500 east).

Eastbound destination sign—**111-Cottage.**

Westbound destination sign—**111-Vincennes.**

NIGHT CAR SCHEDULE: Last car leaves Vincennes Avenue at 12:48 A. M.; last car leaves Cottage Grove Avenue at 12:31 A. M.

**115th STREET**—From West 115th Street (11500 south) and South Halsted Street (800 west) east via East 115th Street to Cottage Grove Avenue (11500 south at 500 east).

Eastbound destination sign—**115-Cottage.**

Westbound destination sign—**115-Halsted.**

NIGHT CAR SCHEDULE: Last car leaves Cottage Grove Avenue at 11:40 P. M.; last car leaves Halsted Street at 11:50 P. M.

**119th STREET**—From West 119th Street (11900 south) and Vincennes Avenue (2000 west) east via 119th Street to South Morgan Street (11900 south at 1000 west).

Eastbound destination sign—**119-Morgan.**

Westbound destination sign—**119-Vincennes.**

NIGHT CAR SCHEDULE: Last car leaves Morgan Street at 10:55 P. M.; last car leaves Vincennes Avenue at 11:02 P. M.

PRINTING PRODUCTS CORPORATION—CHICAGO

