

# PACE GENERAL INFORMATION

Pace schedules and general information can be obtained on our website at [pacebus.com](http://pacebus.com)

Pace Passenger Services provides travel information weekdays from 8:00 am until 5:00 pm 847.364.PACE (7223)

Pace TDD line (for the hearing impaired) 847.364.5093

Pace, CTA and Metra information every day from 5:00 am until 1:00 am 836.7000 (from any Chicagoland area code)

RTA TDD line (for the hearing impaired) 312.836.4949

Pace Special Events and Vanpool information 24-hour automated line 847.228.2416

Pace's Ticket-by-Mail program gives passengers the opportunity to purchase tickets and passes through the mail. For information, call Pace Passenger Services.

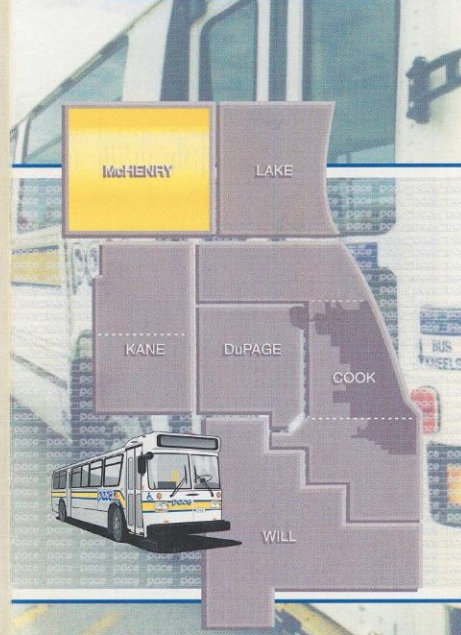
Pace Headquarters  
550 West Algonquin Road  
Arlington Heights, IL 60005  
847.364.8130

## McHENRY COUNTY Dial-A-Ride Service

SPONSOR (OPERATOR)	GEOGRAPHIC AREA SERVED	ADDITIONAL INFORMATION
E. McHenry County	Project has four service components:	
(1) Sponsored by Crystal Lake	(1) City of Crystal Lake	
(2) Sponsored by City of McHenry & NEIL AAA	(2) City of McHenry & portions of McHenry Twp.	
(3)	(3) Mid-day between Crystal Lake & Spring Hill Mall; Crystal Lake to Woodstock; McHenry to Woodstock; Crystal Lake to McHenry	
(4) Sponsored by NEIL AAA	(4) SE McHenry County—Cary, Fox River Grove, Burtons Bridge, Lake-in-the-Hills, Algonquin, in & between, also to Crystal Lake	
Harvard (City of Harvard)	City of Harvard	
Marengo (DAR Systems)	City of Marengo Marengo Twp. Riley Twp. Village of Union	
Woodstock (City of Woodstock)	City of Woodstock	

## McHENRY COUNTY ADA Paratransit Service

PROJECT NAME (OPERATOR)	GEOGRAPHIC AREA SERVED	ADDITIONAL INFORMATION
McHenry County (DAR Systems)	Service is available within 3/4 of a mile of fixed route services as shown below.  Route 806: (connecting Crystal Lake, McHenry, & Fox Lake)  Route 807: (connecting Woodstock, Wonder Lake, & McHenry)  Route 808: (connecting Crystal Lake, Woodstock, & Harvard)	Detailed maps showing the service area covered, as mandated by ADA, can be obtained from Pace Passenger Services at 847-364-7223.  Persons should call to schedule a ride one day in advance between the hours of 6:30am to 7:30pm, Monday through Friday.



# pace

A fresh approach to public transportation

**Route 806 Fox Lake – Crystal Lake**

❖ Provides service between Fox Lake and Crystal Lake via McHenry. Service is provided to Crystal Lake Ambulatory, Northern Illinois Medical Center and Lakeland Plaza. The Metra Stations in Crystal Lake, McHenry and Fox Lake are served by this route. Midday service is provided by dial-a-ride.

**Route 807 Woodstock – McHenry via Wonder Lake**

❖ Provides service between Woodstock and McHenry via Wonder Lake. Service is provided to McHenry County Courthouse, McHenry Market Place, Marion Central High School and Metra stations in Woodstock and McHenry. Midday service is provided by dial-a-ride.

**Route 808 Crystal Lake – Harvard**

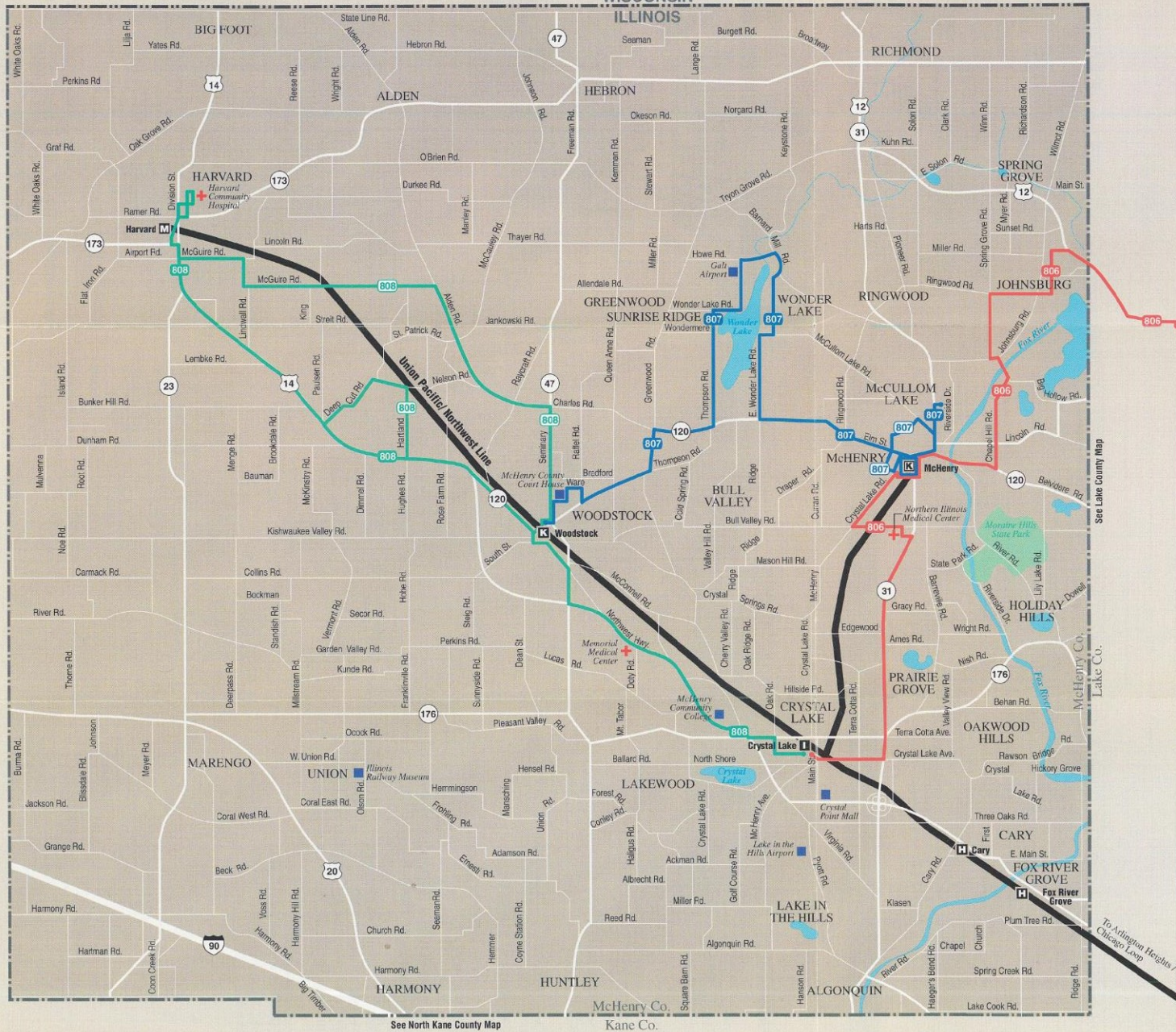
❖ Provides service between Crystal Lake and Harvard via Woodstock. Service is provided to Harvard Community Hospital, Memorial Medical Center (Woodstock), McHenry County Senior Citizens' Council, McHenry County College, and Metra Stations in Harvard, Woodstock and Crystal Lake. Midday service is provided by dial-a-ride.

- Every Day Service
- ◆ Monday-Saturday Service
- ♣ Weekday rush-hour Service
- ▲ Weekday Service

**NOTES**



WISCONSIN  
ILLINOIS



McHENRY COUNTY

- Pace Buses**
- 100 Bus route
  - 100 Part-time service
  - 101 Non-stop express service
  - 101 Non-stop express Part-time service

- CTA Trains**
- Blue Line O'Hare-Congress-Douglas
  - Brown Line Ravenswood
  - Green Line Lake-Englewood-Jackson Park
  - Orange Line Midway
  - Purple Line Express Weekdays rush hours only
  - Purple Line Evanston Express
  - Red Line Howard-Dan Ryan
  - Yellow Line Skokie Swift

- Key**
- 90 Expressway or Tollway
  - 20 US Highway
  - 30 State Highway
  - Amtrak/Commuter Rail Station
  - Point of interest
  - Park-n-Ride lot
  - Hospital

- Metra Commuter Rail**
- Rail line and station
  - Peak period station only
  - Station under construction
  - Station closed nights, weekends, holidays
  - Accessible station

For additional information call  
**(847) 364-7223**  
or check our website at  
[www.pacebus.com](http://www.pacebus.com)

Pace, CTA and Metra are part of the RTA System. For further system information call the

**RTA Travel Info Center at 836-7000.**

Base Map© 1995, Regional Transportation Authority. Used by Permission.  
Pace© 1999. Design by Smartmaps, Inc.

See North Kane County Map

Kane Co.

See Lake County Map

Lake Co.

To Arlington Heights / Chicago Loop