

**Map Legend**

**CTA Trains**

- Blue Line**  
Between O'Hare Airport, Downtown & Forest Park
- Brown Line**  
Between Kimball & Downtown
- Green Line**  
Between Harlem/Lake, Downtown, & 63rd Street terminals
- Orange Line**  
Between Midway Airport & Downtown
- Pink Line**  
Between Linden & Cermak & Downtown
- Purple Line**  
Between Linden & Howard
- Purple Line Express**  
Between Linden, Howard & Downtown (Weekday rush hours only)
- Red Line**  
Between Howard, Downtown & 95th/Dan Ryan
- Yellow Line**  
Between Dempster-Skokie & Howard
- Free train connections**
- Automated station entrance**  
(No farecard machines)
- Accessible station**

**Pace Buses**

- 100** Bus route
  - 100P** Part-time service usually rush hours only
  - 100C** Certain trips only
  - 101** Nonstop express service
  - 101P** Nonstop express part-time service
  - 101E** Express zone stop
  - Call-n-Ride zone**
- Visit [pacebus.com](http://pacebus.com) to download route timetables for specific trip times

**Metra Commuter Rail**

- Metra fares are distance-based by zone.
- zone** Metra rail line and station
  - Peak period station only**
  - South Shore Line and station**  
(between South Bend, Ind. & downtown Chicago)
  - Accessible station**
  - Partially accessible station**

**Other Map Symbols**

- 94** Interstate highway
- 41** US highway
- 68** State highway
- Amtrak service at station**
- Amtrak service continues**
- Point of interest**
- Park & Ride lot**
- Hospital**

**CHICAGO**  
City of Chicago Mobility Direct  
Eligibility: Users must be ADA certified by the RTA  
800-606-1282 for info

## Regional Transportation Authority

The Regional Transportation Authority (RTA) provides financial oversight, funding, and regional transit planning for the three public transit operations in Northeastern Illinois that serve two million riders each weekday: The Chicago Transit Authority (CTA), Metra and Pace bus and paratransit. The Agency provides customer services including on-line and telephone travel planning assistance and travel training for people with disabilities. The RTA is the only transit agency that focuses on the entire region when determining transit planning and funding. The RTA region has a population of approximately eight million people throughout six counties and 7,200 transit route miles. For more information, visit [RTAChicago.org](http://RTAChicago.org)



Amtrak provides rail service from Chicago's Union Station to cities throughout Illinois and United States. Many of these routes, combined with Thruway buses, connect 35 Illinois cities. For more information, visit [Amtrak.com](http://Amtrak.com)

Chicago Water Taxi offers a direct link from the Metra and Amtrak train stations at Madison Street to Michigan Avenue, North Avenue and Chinatown. For more information visit [chicagowatertaxi.com](http://chicagowatertaxi.com)

### Accessibility

Metra has 241 commuter rail stations, of which 170 are fully accessible and 22 are partially accessible. The CTA "L" train system includes 145 stations, of which 101 are fully accessible. All CTA and Pace buses are ramp-equipped and make automated stop announcements. For more information on how to use the region's accessible bus and rail system, visit [RTAChicago.org/riders-resources/accessible-transit](http://RTAChicago.org/riders-resources/accessible-transit)

### RTA Travel Information Center:

**312-836-7000 • Daily: 6:00 am to 7:00 pm**

**RTAChicago.org**

### RTA Customer Service

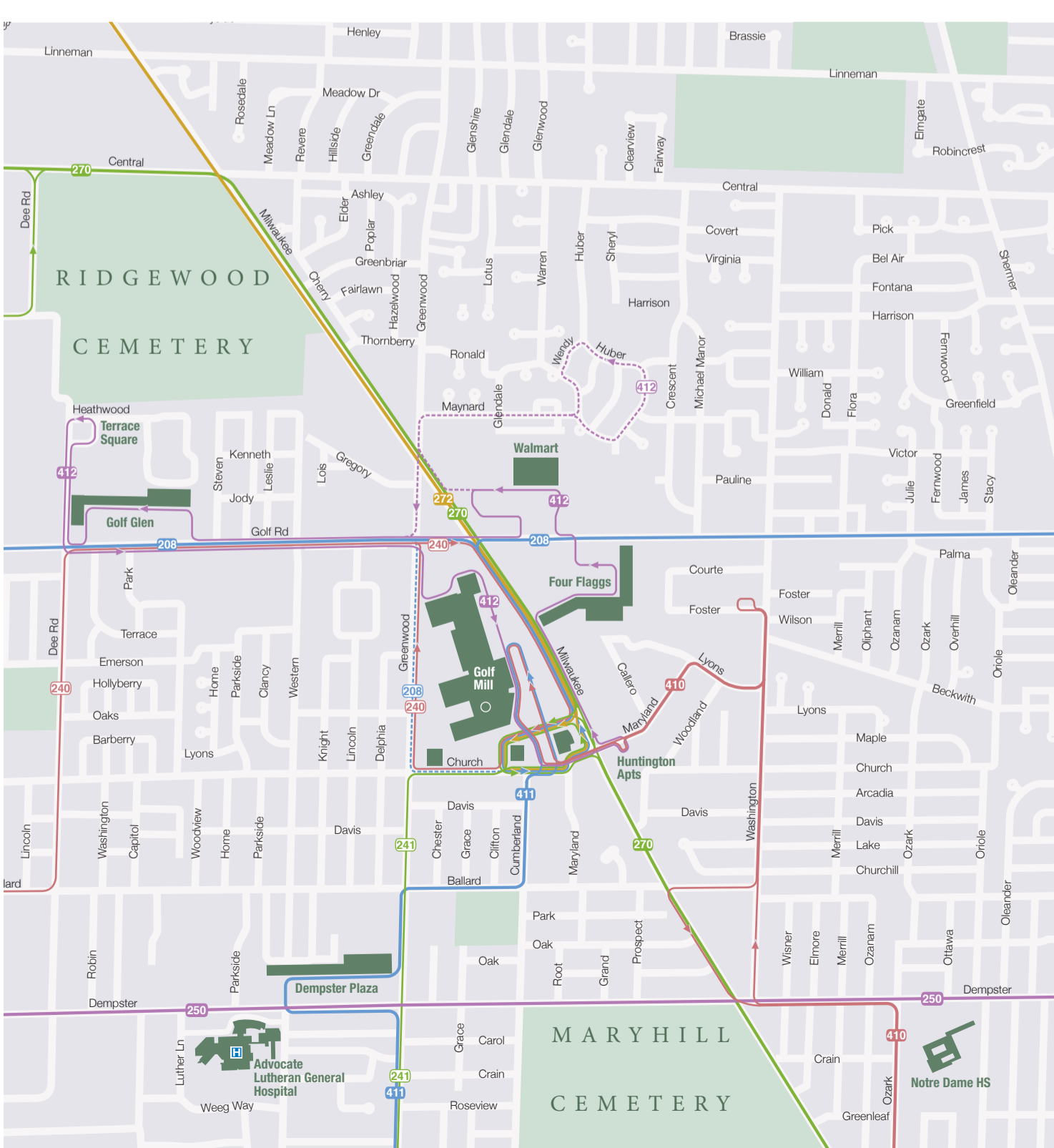
**Call 312.913.3110 for locations and hours.**



## Pace bus routes

| PACE ROUTE                    | OPERATES                                                                                                             |
|-------------------------------|----------------------------------------------------------------------------------------------------------------------|
| 208 Golf Road                 | daily morning-mid evening                                                                                            |
| 209 Busse Hwy                 | Mon-Sat morning-early evening                                                                                        |
| 210 Lincoln Ave               | Mon-Fri morning-early evening                                                                                        |
| 213 Green Bay Rd              | Mon-Sat morning-mid evening                                                                                          |
| 215 Crawford-Howard           | daily morning-late evening                                                                                           |
| 221 Wolf Rd                   | Mon-Fri morning-early evening                                                                                        |
| 223 Elk Grove-Rosemont Sta    | daily morning-late evening                                                                                           |
| 225 Central-Howard            | Mon-Fri rush periods only                                                                                            |
| 226 Oakton St                 | Mon-Fri morning-early evening                                                                                        |
| 230 South Des Plaines         | Mon-Fri morning-early evening                                                                                        |
| 234 Wheeling-Des Plaines      | Mon-Fri morning-early evening                                                                                        |
| 240 Dee Rd                    | Mon-Fri rush periods only                                                                                            |
| 241 Greenwood-Talcott         | Mon-Fri rush periods only                                                                                            |
| 250 Dempster St               | daily morning-late evening                                                                                           |
| 270 Milwaukee Ave             | daily morning-late evening                                                                                           |
| 272 Milwaukee Ave North       | Mon-Sat morning-late evening                                                                                         |
| 279 Touhy Ave                 | daily morning-late evening                                                                                           |
| 303 Forest Park-Rosemont      | daily morning-late evening                                                                                           |
| 319 Grand Ave                 | Mon-Sat morning-early evening service east of Harlem begins approx 8:30 am                                           |
| 326 West Irving Park          | Mon-Fri rush periods only                                                                                            |
| 330 Mannheim-LaGrange Rd      | daily morning-late evening                                                                                           |
| 331 Cumberland-5th Ave        | Mon-Sat morning-mid evening                                                                                          |
| 332 River-York Roads          | daily morning-late evening                                                                                           |
| 411 Niles Local Service       | daily AM rush through PM rush                                                                                        |
| 412 Niles Shopper's Special   | daily mid-morning through PM rush                                                                                    |
| 413 Niles South End Special   | Mon-Fri mid-afternoon                                                                                                |
| 421 Wilmette Avenue           | Mon-Fri AM rush through PM rush                                                                                      |
| 422 Linden CTA/Northbrook Ct  | Mon-Fri morning-mid evening                                                                                          |
| 423 Linden CTA-Harlem CTA     | Mon-Fri morning-mid evening                                                                                          |
| 471 Highland Pk-Northbrook Ct | Mon-Sat morning-early evening                                                                                        |
| 472 Highland Park-Highwood    | Mon-Sat morning-early evening                                                                                        |
| 576 Deerfield-Lincolnshire    | Mon-Fri 2 AM; 2 PM trips (reverse commute) from Metra in AM to Metra in PM; meets Metra Milw-N trains from Union Sta |

## Golf Mill Area



## Metra to Pace connections

| UP-North Line                                                                                                                                                         | UP-Northwest Line                                                                                                                                                                                                                                                                                                                                                                                                                                                                                                                                                                                                                                                                                                                                                                   |
|-----------------------------------------------------------------------------------------------------------------------------------------------------------------------|-------------------------------------------------------------------------------------------------------------------------------------------------------------------------------------------------------------------------------------------------------------------------------------------------------------------------------------------------------------------------------------------------------------------------------------------------------------------------------------------------------------------------------------------------------------------------------------------------------------------------------------------------------------------------------------------------------------------------------------------------------------------------------------|
| <b>Ravenswood</b><br>81 south of station on Lawrence                                                                                                                  | <b>Irving Park</b><br>53 east of station on Pulaski<br>54A, 80 north of station on Irving Park                                                                                                                                                                                                                                                                                                                                                                                                                                                                                                                                                                                                                                                                                      |
| <b>Rogers Park</b><br>96 beneath station on Morse<br>22 east of station on Clark                                                                                      | <b>Jefferson Park</b><br>56, 68, 81, 81W, 85, 85A, 88, 91, 92, 225,<br>226, 270 south of station in bus boarding area                                                                                                                                                                                                                                                                                                                                                                                                                                                                                                                                                                                                                                                               |
| <b>Main St/Evanston</b><br>205 east of station on Chicago Ave                                                                                                         | <b>Gladstone Park</b><br>68 north of station on Northwest Hwy                                                                                                                                                                                                                                                                                                                                                                                                                                                                                                                                                                                                                                                                                                                       |
| <b>Davis St/Evanston</b><br>93, 206, 208, 213, 250 east of CTA station on Benson<br>201, 205 on Church or Davis                                                       | <b>Norwood Park</b><br>68 north of station on Northwest Hwy                                                                                                                                                                                                                                                                                                                                                                                                                                                                                                                                                                                                                                                                                                                         |
| <b>Central St/Evanston</b><br>201, 206 under station on Central St<br>213 west of station on Green Bay Rd                                                             | <b>Edison Park</b><br>68 one block north of station on Northwest Hwy<br>209 one block west of station on Ozark                                                                                                                                                                                                                                                                                                                                                                                                                                                                                                                                                                                                                                                                      |
| <b>Wilmette</b><br>213 west of station on Green Bay Rd<br>421, 422 south of station on Central St                                                                     | <b>Park Ridge</b><br>68, 209 westbound, 241, 290 north of station on Summit<br>209 eastbound one-half block north of station on Touhy                                                                                                                                                                                                                                                                                                                                                                                                                                                                                                                                                                                                                                               |
| <b>Kenilworth</b><br>213 west of station on Green Bay Rd                                                                                                              | <b>Dee Road</b><br>209 north of station on Busse Hwy<br>226 one block north of station on Oakton<br>240 west of station on Dee Rd                                                                                                                                                                                                                                                                                                                                                                                                                                                                                                                                                                                                                                                   |
| <b>Indian Hill</b><br>213 west of station on Green Bay Rd                                                                                                             | <b>Des Plaines</b><br>208, 209, 226, 230, 234, 250 north of station on Miner                                                                                                                                                                                                                                                                                                                                                                                                                                                                                                                                                                                                                                                                                                        |
| <b>Winnetka</b><br>213 west of station on Green Bay Rd<br>423 north of station on Elm                                                                                 | <b>Cumberland</b><br>208 eastbound in front of station on Northwest Hwy                                                                                                                                                                                                                                                                                                                                                                                                                                                                                                                                                                                                                                                                                                             |
| <b>Hubbard Woods</b><br>213 west of station on Green Bay Rd                                                                                                           | <b>Braeside</b><br>208 westbound, 221 across street from station on Northwest Hwy<br>234 one block north of station on State St                                                                                                                                                                                                                                                                                                                                                                                                                                                                                                                                                                                                                                                     |
| <b>Glencoe</b><br>213 west of station on Green Bay Rd                                                                                                                 | <b>Highland Park</b><br>213, 471, 472 west of station, next to outbound platform                                                                                                                                                                                                                                                                                                                                                                                                                                                                                                                                                                                                                                                                                                    |
| <b>Braeside</b><br>213 west of station on Green Bay Rd<br>628, 629, 640                                                                                               | <b>Highwood</b><br>472 west of station on Green Bay Rd                                                                                                                                                                                                                                                                                                                                                                                                                                                                                                                                                                                                                                                                                                                              |
| <b>Fort Sheridan</b><br>472 west of station on Western Ave                                                                                                            | <b>North Central Service</b>                                                                                                                                                                                                                                                                                                                                                                                                                                                                                                                                                                                                                                                                                                                                                        |
| <b>Milwi-North Line</b>                                                                                                                                               | <b>Belmont Ave/Franklin Park</b><br>319 south of station on Belmont<br>Metra Milw-West line three blocks west of station on Belmont                                                                                                                                                                                                                                                                                                                                                                                                                                                                                                                                                                                                                                                 |
| <b>Grayland</b><br>56 east of station on Milwaukee Ave                                                                                                                | <b>Schiller Park</b><br>303 3 blocks south of station on Irving Park<br>326 west of station on 25th Ave                                                                                                                                                                                                                                                                                                                                                                                                                                                                                                                                                                                                                                                                             |
| <b>Mayfair</b><br>54, 54A west of station on Cicero Ave<br>78 north of station on Montrose                                                                            | <b>Rosemont</b><br>611, 895 two blocks east of station on Baltimore                                                                                                                                                                                                                                                                                                                                                                                                                                                                                                                                                                                                                                                                                                                 |
| <b>Forest Glen</b><br>92 south of station on Foster                                                                                                                   | <b>O'Hare Transfer</b><br>250, 330 a block west of station on Mannheim                                                                                                                                                                                                                                                                                                                                                                                                                                                                                                                                                                                                                                                                                                              |
| <b>Edgebrook</b><br>84 south of station at Caldwell & Central Ave<br>85A northbound on Caldwell; southbound on Lehigh<br>225, 226 east of station on Central Ave      | <b>Prospect Heights</b><br>221 west of station on Wolf Rd                                                                                                                                                                                                                                                                                                                                                                                                                                                                                                                                                                                                                                                                                                                           |
| <b>Morton Grove</b><br>210 north of station on Lincoln Ave<br>250 two blocks north of station on Dempster                                                             | <b>Wheeling</b><br>234 north of station on Dundee Rd (certain trips serve station directly)                                                                                                                                                                                                                                                                                                                                                                                                                                                                                                                                                                                                                                                                                         |
| <b>Golf</b><br>210 west of station on Waukegan Rd                                                                                                                     | <b>Buffalo Grove</b><br>234, 272 (certain trips) north end of inbound platform in bus loading area<br>272, 576, 626 one block north and east of station on Deerfield Pkwy                                                                                                                                                                                                                                                                                                                                                                                                                                                                                                                                                                                                           |
| <b>Glenview</b><br>210, 422 south of station on Glenview Rd<br>423 west of station on Lehigh                                                                          | <b>Milw-West Line</b>                                                                                                                                                                                                                                                                                                                                                                                                                                                                                                                                                                                                                                                                                                                                                               |
| <b>The Glen of North Glenview</b><br>623 west of station in parking area                                                                                              | <b>River Grove</b><br>319, 331 east of station on Thatcher                                                                                                                                                                                                                                                                                                                                                                                                                                                                                                                                                                                                                                                                                                                          |
| <b>Northbrook</b><br>422 west of station on Sherman                                                                                                                   | <b>Franklin Park</b><br>303 east of station on 25th Ave<br>319 south of station on Franklin Ave<br>Metra North Central Service three blocks east of station on Belmont<br>Mannheim transfers not convenient                                                                                                                                                                                                                                                                                                                                                                                                                                                                                                                                                                         |
| <b>Lake Cook Rd</b><br>628, 627, 626, 629 631, 632, 633, 634, 635 at bus loading area next to inbound platform buses meet trains and wait for transferring passengers | <b>Bensenville</b><br>319, 332 south of station in bus loading area<br>Walnut<br>616 east of station on Walnut                                                                                                                                                                                                                                                                                                                                                                                                                                                                                                                                                                                                                                                                      |
| <b>Deerfield</b><br>632 west of station on Chestnut<br>471 east of station on Park Ave                                                                                | <b>Deerfield</b><br>632 west of station on Chestnut<br>471 east of station on Park Ave                                                                                                                                                                                                                                                                                                                                                                                                                                                                                                                                                                                                                                                                                              |
| <b>Lake Forest</b><br>625 (certain trips) west of station at bus loading area<br>buses meet train and waits for transferring passengers                               | <b>Palatine Twp</b><br>Hours: Mon-Fri 8:00 am-4:00 pm<br>Eligibility: Disabled and Senior<br>847-358-6907<br>Destinations up to 15 miles outside of the township and scheduled trips to various shopping centers.<br><b>Skokie</b><br>Hours: Mon-Fri 9:00 am-4:00 pm<br>Eligibility: Disabled and Senior<br>Eligible riders must be members of the Skokie Star program.<br>888-213-7827<br>Service to select destinations outside village borders.<br><b>Libertyville, Libertyville Twp, Mundelein</b><br>Hours: Mon-Fri 9:00 am-4:30 pm<br>Eligibility: Disabled and Senior<br>800-201-6446<br><b>Vernon Twp</b><br>Hours: Mon-Fri 8:30 am-4:00 pm<br>Eligibility: General Public<br>847-634-4600<br>Service is available up to one mile beyond township borders for select trips. |

## Dial-a-Ride • Paratransit

### Bensenville

Hours: Mon-Fri 6:00 am-6:00 pm, 1st & 3rd Sat 10:00 am-3:00 pm  
Eligibility: General Public  
630-350-3425

### City of Chicago Mobility Direct

Service Area: City of Chicago  
Hours: at all times  
Eligibility: Users must be ADA certified by the RTA.  
800-806-1282 for info

### City of Chicago Taxi Access Program

Service Area: City of Chicago  
Hours: at all times  
Eligibility: Users must be ADA certified by the RTA.  
800-806-1282 for info

### Elk Grove Village

Elk Grove Village (excludes Industrial Park)  
Hours: Mon-Fri 9:00 am-6:00 pm, Sat 9:00 am-4:00 pm  
Eligibility: General Public  
847-299-6212

### Leyden Twp

Hours: Mon-Fri 8:00 am-5:00 pm  
Eligibility: General Public  
888-699-6999  
Service to select shopping and medical destinations outside of the township.

### Palatine Twp

Hours: Mon-Fri 8:00 am-4:00 pm  
Eligibility: Disabled and Senior  
847-358-6907  
Destinations up to 15 miles outside of the township and scheduled trips to various shopping centers.

### Skokie

Hours: Mon-Fri 9:00 am-4:00 pm  
Eligibility: Disabled and Senior  
Eligible riders must be members of the Skokie Star program.  
888-213-7827  
Service to select destinations outside village borders.

### Libertyville, Libertyville Twp, Mundelein

Hours: Mon-Fri 9:00 am-4:30 pm  
Eligibility: Disabled and Senior  
800-201-6446

### Vernon Twp

Hours: Mon-Fri 8:30 am-4:00 pm  
Eligibility: General Public  
847-634-4600  
Service is available up to one mile beyond township borders for select trips.

### Dial-a-Ride areas are depicted at the time of publication. Please call to confirm eligibility and service areas.

## CTA, Metra and Pace

The Chicago Transit Authority (CTA) runs bus and elevated/subway trains in Chicago and nearby suburbs. For current fare and schedule information, visit [transitchicago.com](http://transitchicago.com)

Metra provides commuter rail services to 241 stations throughout the region serving Chicago and its suburbs. For complete fare and schedule information, visit [MetraRail.com](http://MetraRail.com)

Pace moves people throughout the Chicago region with fixed bus routes, Dial-a-Ride, Call-n-Ride and other community transit programs. Most Pace bus routes connect with Metra and CTA service. For schedules and fares, visit [PaceBus.com](http://PaceBus.com)

## Transit Partners

South Shore Line runs trains on the Metra Electric line from downtown Chicago to South Bend, Indiana, serving the Southeast Side of Chicago and Northwest Indiana. For schedules and fares visit [nictd.com](http://nictd.com)

## CTA and Pace Fares

Ventra™ is the region's fare payment system, which makes it faster and easier to board and pay. Ventra Transit Accounts can be loaded with value and passes using the Ventra App, cash, coins or bank cards at any Ventra vending machine, hundreds of Ventra retailers (payment types accepted may vary), or with credit/debit cards online and by phone.

Cash is accepted on buses. No transfers are issued when paying in cash.

|                       | Full Fare | Reduced Fare**<br><i>deducted from transit value</i> | Cash Fare | Cash Reduced** |
|-----------------------|-----------|------------------------------------------------------|-----------|----------------|
| CTA 'L' train fare    | \$2.25*   | \$1.10                                               | \$2.25*   | \$1.10*        |
| CTA Bus fare          | \$2.00    | \$1.00                                               | \$2.25    | \$1.10         |
| Pace Bus fare         | \$1.75    | \$0.85                                               | \$2.00    | \$1.00         |
| Pace Premium Bus fare | \$4.00    | \$2.00                                               | \$4.00    | \$2.00         |

**CTA and Pace Transfers**  
Up to two additional rides within two hours \$0.25 \$0.15

\*Load cash at 'L' stations onto a Ventra Card, personal contactless bankcard, or buy a Single-Ride ticket. Single-Ride Ventra Tickets cost \$3, provide up to 2 transfers within 2 hours and include a limited-use media fee. Buy new Ventra Cards or Tickets at any Ventra Vending Machine. A special \$5 fare applies when boarding the CTA Blue Line at O'Hare paying transit value or buying a Single-Ride Ticket (the special fare does not apply when using a pass to ride).

\*\* Passengers with RTA-issued Reduced Fare permits and children ages 7 to 11. Children under 7 ride free with a fare-paying customer. Call the RTA at 312-913-3110 for more information about RTA Reduced Fare permits.

Visit [transitchicago.com/fares/](http://transitchicago.com/fares/) for CTA fare details.  
Visit [pacebus.com/sub/schedules/fares\\_information.asp](http://pacebus.com/sub/schedules/fares_information.asp) for Pace fare details.

## Metra Passes

Metra offers unlimited ride monthly passes. The schedule below is for the price of a monthly pass based on travel to/from downtown Chicago (Zone A).

| Zone             | A        | B        | C        | D        | E        | F        |
|------------------|----------|----------|----------|----------|----------|----------|
| Monthly          | \$107.00 | \$114.00 | \$149.75 | \$171.00 | \$185.25 | \$199.50 |
| Reduced monthly* | \$61.25  | \$70.00  | \$87.50  | \$105.00 | \$113.75 | \$122.50 |

| Zone             | G        | H        | I        | J        | K        | M        |
|------------------|----------|----------|----------|----------|----------|----------|
| Monthly          | \$213.75 | \$228.00 | \$249.50 | \$263.75 | \$278.00 | \$306.50 |
| Reduced monthly* | \$131.25 | \$140.00 | \$148.75 | \$157.50 | \$166.25 | \$183.75 |

\* Available only to riders with RTA-issued Reduced Fare permits

## Children's Fares

Children pay reduced fares on CTA, Metra and Pace based on their age. On Metra and Pace, children under the age of 7 are not permitted to travel without a fare paying customer.

|       | Ages 7-11     | Under 7                        |
|-------|---------------|--------------------------------|
| CTA   | Reduced Fare* | Free with fare-paying customer |
| Pace  | Reduced Fare  | Free with fare-paying adult**  |
| Metra | Half Fare     | Free with fare-paying adult*** |

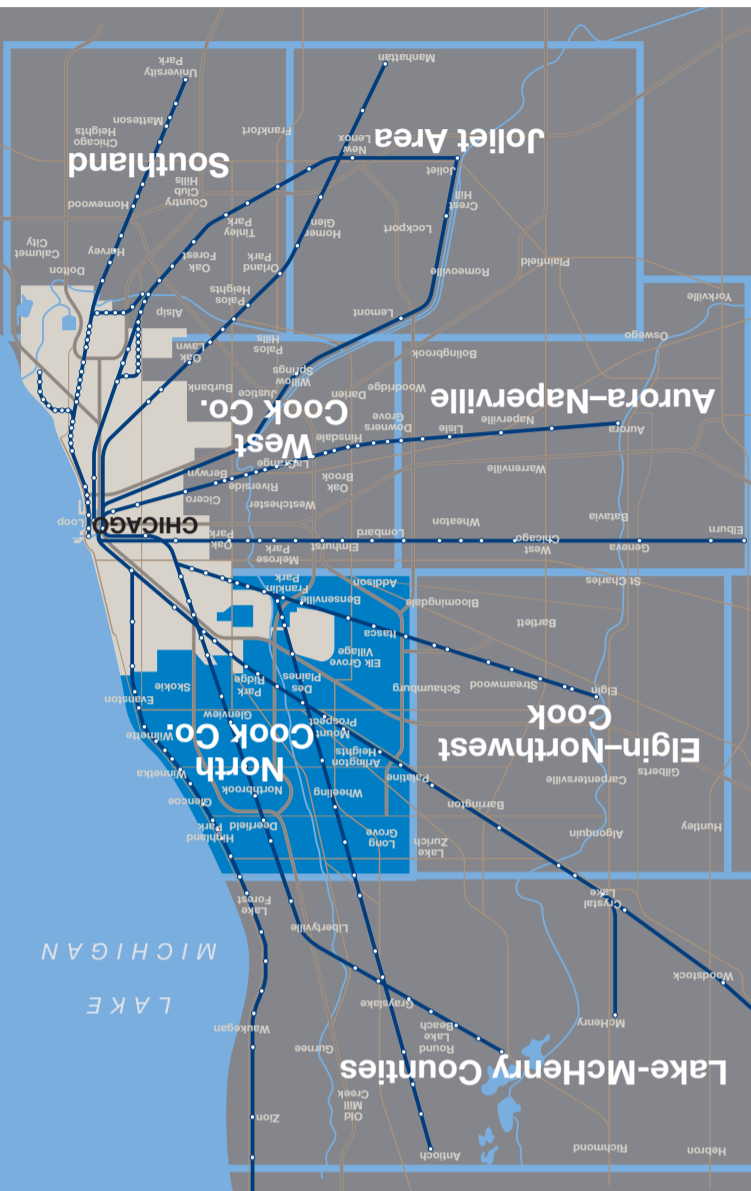
\*Children 6 years of age and younger traveling alone pay reduced fare.  
\*\*Up to two children free per adult  
\*\*\*Up to three children free per adult

*Fares are subject to change. Effective through December 2017.*



RTA Customer Service  
RTAChicago.org  
Call 312.913.3110 for locations and hours.

RTA Travel Information Center:  
312-936-7000 • Daily: 6:00 am to 7:00 pm



RTA Local Transit Maps

NORTH COOK COUNTY

Regional Transportation Authority

# NORTH COOK COUNTY

## TRANSIT MAP

2017