

To School	Route	From School
6:50	#76 Touhy/Chestnut: Chestnut - Lunt - Mannheim - Higgins - Kirschhoff - Devon - Scott - Higgins - Devon-Stillwell - Craig - Scott - Pratt - Maple - Touhy - Scott - Jarvis - Cedar - Howard White - Oakton	2:50 3:35
7:20	#77 Warrington/Westgate: Warrington - Golf - Cumberland - Washington - Westgate - Millers- Mt. Prospect - Walnut - Warrington - Thacker- Wolf	2:50 3:35
6:50	#78 Radcliffe/Wisconsin: Wisconsin - Amherst - Pinehurst - Princeton - Cambridge - Stone - Ardmore - Drake - Wolf	2:50 3:35
6:50	#79 Clayton/Berkshire: Berkshire - Wolf - Rand- Fifth - Waikiki - Third - Rand - Golf - Wolf	2:50 3:35
Use #s 77, 78 or 79 in the A.M.	#77-78-79 combination from school via Wolf - Thacker Mt. Prospect - Princeton - Cambridge - Stone Wolf - Rand - Fifth - Waikiki - Third - Rand - Golf	4:15 5:15 -4:45 5:45 6:15
6:55	#230x Touhy/Rusty: Rusty - Craig - Scott - Pratt - Maple - Touhy - Scott - Jarvis - Cedar - Howard White - Oakton	2:50 3:35
7:25	#233x Thacker/Cora: Cora - Oakwood - White - Forest Center - Thacker - Third - Algonquin - Wolf	2:50 3:35
6:53	#226 Oakton/River: Oakton (After school board at bus shelter on Oakton)	2:32 3:48 5:18 3:02 4:18 5:48 3:18 4:48
6:40	#233 Pearson/Ellinwood: Ellinwood - River -Thacker Graceland - Lee - Algonquin - Wolf - (After school board at the northeast corner of Wolf and Oakton)	4:27 5:57 4:57 6:32 5:27

In the morning, avoid overcrowding by taking an earlier bus

Fares: 25¢ for students with a current NORTRAN reduced fare permit. Students must show the permit to the driver when boarding the bus. Regular adult fare applies when the card is not shown. Cards are available at school. EXACT FARE IS REQUIRED.

Conduct Smoking, vandalism, abusive conduct is not permitted on NORTRAN buses. Bus routes may be cancelled without notice where student behavior is unacceptable.

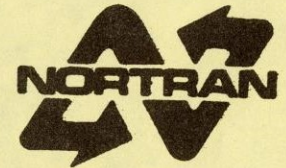
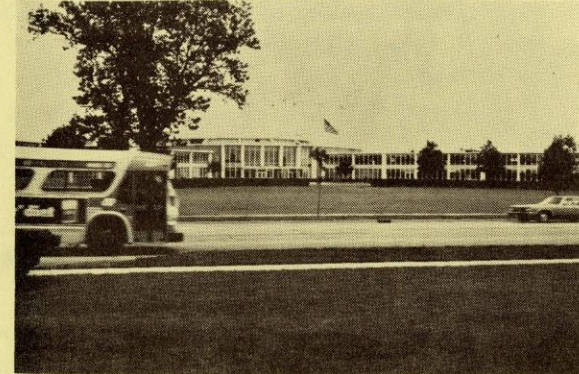
After School: If you stay at school after the main dismissals, you can get home by using NORTRAN. Route #226 can be boarded at Oakton st. and operates at half hour intervals. Route #223 can be boarded at the northeast corner of Wolf and Oakton. The bus goes into downtown Des Plaines where you can transfer to other buses to complete your trip. There is also a combination #77-78-79 that leaves from the bus loading area at half hour intervals.

Early Dismissal: On early dismissal days, special schedules will be operated. Announcements will be made in school as to the routes and times.

**For travel information
Call toll-free
800-972-7000**

MAINE WEST Bus Schedule

September 5, 1978



NORTH SUBURBAN MASS TRANSIT DISTRICT

Lost and Found: 297-0135
RTA information: 800-972-7000

NORTRAN office and garage
900 E. Northwest Hwy.
Des Plaines, Il. 60017

Buses will stop at all inter-
sections on signal from pas-
senger.

All bus service shown in this
timetable is made possible by
operating grants from the
Regional Transportation Authority

North Suburban Mass Transit District

***** Transit Route: Monday thru Friday (Weekend Service on certain routes)

//// School Route: School days only

