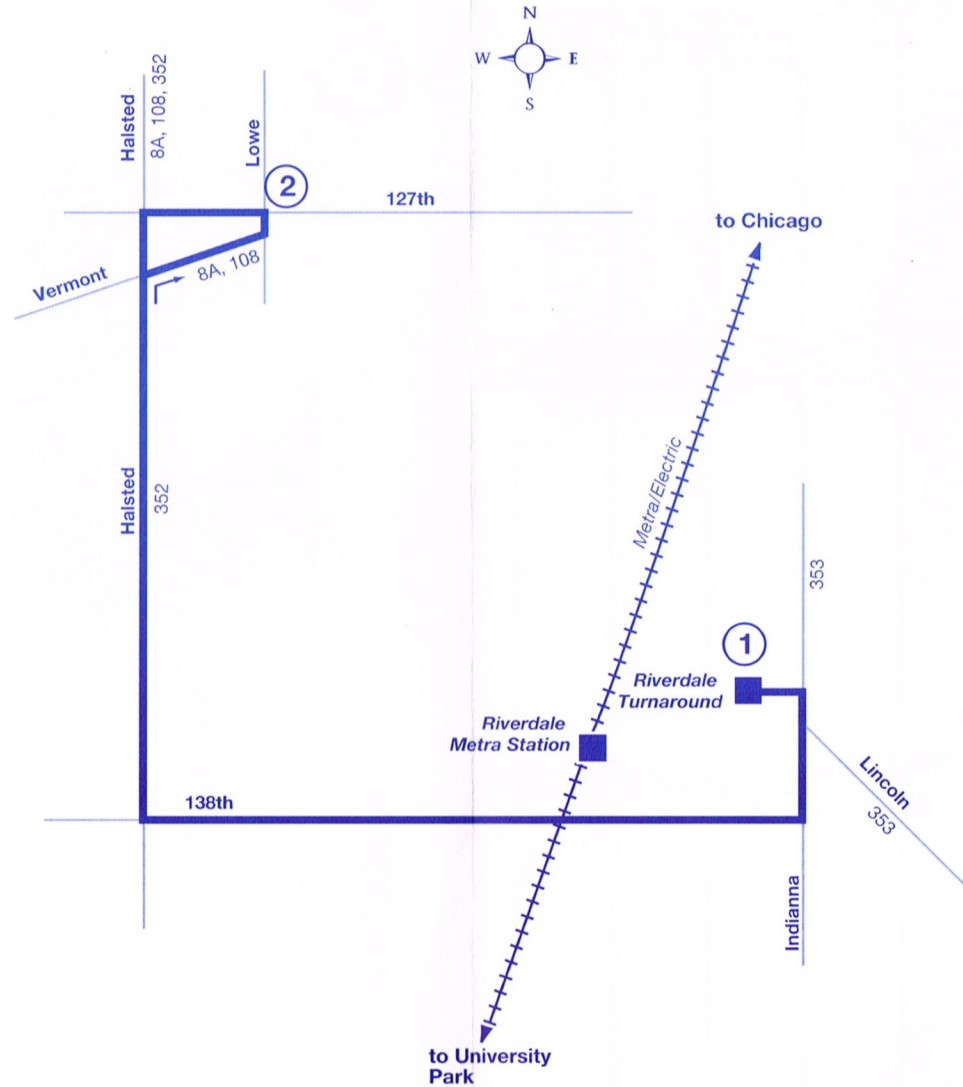


# Route 348

Effective Date  
November 30, 2005

Pace accepts all CTA passes.



## EXACT FARE REQUIRED DRIVER HAS NO CHANGE

LOCAL FARES	Full Fare	Reduced
Local Fare	\$1.25	\$0.60
Fare with Pace or CTA Transfer	1.75	0.85

Pace has a variety of passes and tickets that can make traveling on Pace, CTA and Metra easier and more cost effective. Please review the Pace Fare Guide for information on the Pace Commuter Club Cards, Pace/CTA 30-Day Pass, Link-Up Pass, PlusBus Pass, Student Haul Pass, Campus Connection, Transit Cards, Reduced Fare Permits and 10-Ride Tickets. Reduced Fares are available for children (ages 7-11), students traveling to and from school, senior citizens and persons with disabilities. The RTA Reduced Fare Permit is required for seniors and persons with disabilities. A Medicare Card and another source of identification with a photograph and a date of birth are acceptable to obtain the Permit. Please refer to the Pace Fare Guide for restrictions and additional information.

### INFORMATION CENTER

If you need transit information please call:  
**The RTA Travel Information Center**, open daily from 5:00 a.m. to 1:00 a.m. Use from all suburban area codes. **836-7000**  
**TTY# (For HEARING IMPAIRED ONLY)**  
**(312) 836-4949**  
**Pace Customer Relations**, Monday through Friday from 8:00 a.m. to 5:00 p.m.  
**(847) 364-PACE (7223)**  
**TTY# (Pace information for HEARING IMPAIRED ONLY)**  
**(847) 364-5093**

### CARRIER INFORMATION

**OPERATED BY: Pace South**  
**For lost and found call (708) 331-0051**

### ADDITIONAL INFORMATION

The schedules, fares and other information in this timetable are subject to change. Pace does not assume responsibility for errors in timetables, nor for inconvenience or damage resulting from delayed trains or buses or failure to make connections.

Bus will stop upon signal to driver at any intersection along the route where it is safe to do so.

# 348

138th Street  
Riverdale  
Connector



All Pace service is wheelchair accessible.



All Pace buses are equipped with bike racks.

Pace accepts all CTA passes.



### Major Destinations

**Riverdale Turnaround**

**Riverdale Metra Electric Station**

**127th/Lowe**

**Monday - Saturday Service**

**November 30, 2005**

[www.pacebus.com](http://www.pacebus.com)

# ROUTE 348 138TH ST. RIVERDALE CONNECTOR



**WEEKDAY • SATURDAY**

## WESTBOUND

①	②
<u>RIVERDALE TURNAROUND</u>	<u>127TH LOWE</u>
6:00am	6:12am
6:30	6:42
7:00	7:12
7:30	7:42
8:00	8:12
8:30	8:42
9:00	9:12
9:30	9:42
10:00	10:12
10:30	10:42
11:00	11:12
11:30	11:42
<b>12:00pm</b>	<b>12:12pm</b>
<b>12:30</b>	<b>12:42</b>
<b>1:00</b>	<b>1:12</b>
<b>1:30</b>	<b>1:42</b>
<b>2:00</b>	<b>2:12</b>
<b>2:30</b>	<b>2:42</b>
<b>3:00</b>	<b>3:12</b>
<b>3:30</b>	<b>3:42</b>
<b>4:00</b>	<b>4:12</b>
<b>4:30</b>	<b>4:42</b>
<b>5:00</b>	<b>5:12</b>
<b>5:30</b>	<b>5:42</b>
<b>6:00</b>	<b>6:12</b>

## EASTBOUND

②	①
<u>127TH LOWE</u>	<u>RIVERDALE TURNAROUND</u>
6:12am	6:24am
6:42	6:54
7:12	7:24
7:42	7:54
8:12	8:24
8:42	8:54
9:12	9:24
9:42	9:54
10:12	10:24
10:42	10:54
11:12	11:24
11:42	11:54
<b>12:12pm</b>	<b>12:24pm</b>
<b>12:42</b>	<b>12:54</b>
<b>1:12</b>	<b>1:24</b>
<b>1:42</b>	<b>1:54</b>
<b>2:12</b>	<b>2:24</b>
<b>2:42</b>	<b>2:54</b>
<b>3:12</b>	<b>3:24</b>
<b>3:42</b>	<b>3:54</b>
<b>4:12</b>	<b>4:24</b>
<b>4:42</b>	<b>4:54</b>
<b>5:12</b>	<b>5:24</b>
<b>5:42</b>	<b>5:54</b>
<b>6:12</b>	<b>6:24</b>

No Sunday or holiday service.

111605NEW

