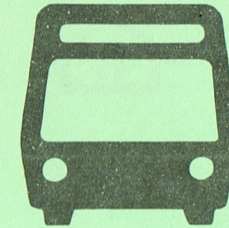


641 643

REVISED SERVICE
AUGUST 31, 1981



641

Northeast Elmhurst

643

Northwest Elmhurst



641 Northeast - Southbound

York Meadows Apartments	Diversey & Virginia	Diversey & Wilson	Van Auken & Lake	Geneva & Third	Schiller & Berneau (Hospital)	Elmhurst CNW Station	CNW Departs Elmhurst	CNW Arrives Chicago
6:10am	6:12am	6:14am	6:16am	6:20am	6:22am	6:26am	6:40am	7:15am
6:38	6:40	6:42	6:44	6:48	6:50	6:54	7:00	7:37
7:04	7:06	7:08	7:10	7:14	7:16	7:20	7:25	7:50
7:29	7:31	7:33 G 8:22	7:38 8:26 N	7:42 B	7:44 8:29	7:48 8:33	8:00 8:38	8:33 9:15
3:05pm	3:07pm	3:09pm G 3:42 G	3:17pm 3:49	B B	3:22pm 3:54 4:45	3:28pm 3:58 4:50	4:39pm	5:10pm

641 Northeast - Northbound

CNW Departs Chicago	CNW Arrives Elmhurst	Bus Departs First & Addison	Schiller & Berneau (Hospital)	Geneva & Third	Van Auken & Lake	Diversey & Wilson	York Meadows Apartments	
6:20am	6:50am	6:26am S			via York Road		6:38am	
		6:54 S			via York Road		7:04	
7:20	7:50	7:20 S			via York Road		7:29	
		7:53 P	8:02am	B	8:08am G	8:20am		
2:40pm	3:11pm	3:28pm S	3:31pm	B	3:36pm	3:41pm		
3:40	4:13	4:15 C						
4:40	5:07	5:09	discharges passengers on demand					
5:17	5:42	5:44						
5:37	6:01	6:03 C						

B operates via Berneau between Third and Schiller
C trip combined with Route #643, Northwest Elmhurst
G operates via Geneva between North End and Belden
P board bus on York at Park
S board bus on First, east of Addison at Station
N via Emroy-North-Berneau

643 Northwest - Southbound (AM)

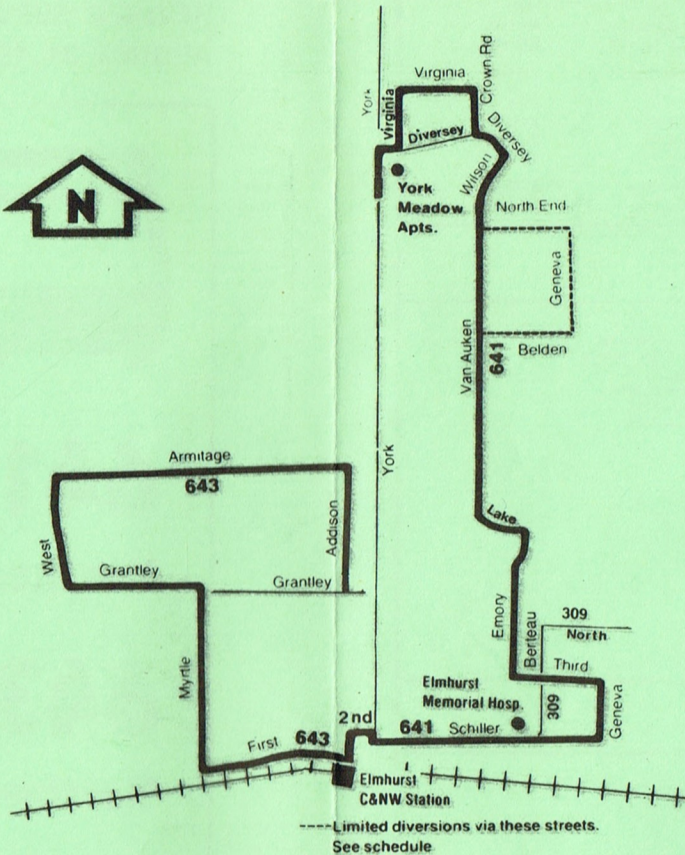
Grantley & Addison	Armitage & West	Grantley & Myrtle	Myrtle & First	Elmhurst CNW Stn.	CNW Departs Elmhurst	CNW Arrives Chicago
6:18am	6:23am	6:26am	6:28am	6:30am	6:40am	7:15am
6:51	6:56	6:59	7:01	7:03	7:09	7:34
7:08	7:13	7:16	7:18	7:20	7:25	7:50
7:38	7:43	7:46	7:48	7:50	8:00	8:33
8:20 W	8:27	8:30	8:32	8:34	8:38	9:15

643 Northwest - Northbound (PM)

CNW Departs Chicago	CNW Arrives Elmhurst	First & Addison
2:40pm	3:11pm	3:13pm
3:40	4:13	4:15 L
4:40	5:07	5:09
5:17	5:42	5:44
5:37	6:01	6:03 L

Discharges passengers on demand.

L trips terminate at Armitage and Larch.
W via Grantley - Elm - Fremont to Addison, then follows regular route.



Weekday service only.
No Saturday, Sunday or
holiday service.

**Operated by
Commuter Bus Systems**

Lost and Found 620-6800

**Bus will stop upon signal to driver
at any intersection along the route
where it is safe to do so.**

**RTA Travel Information is
a 24 hour facility.
For better service, call during
the off-peak hours.**

**In Chicago;
836-7000
In the suburbs
toll-free;
800-972-7000**



The schedules, fares and other arrangements shown in this timetable are subject to change. The Regional Transportation Authority does not assume responsibility for errors in timetables, nor for inconvenience or damage resulting from delayed trains or buses or failure to make connections.