

RTA Travel Information is
a 24 hour facility.
For better service, call during
the off-peak hours.



In Chicago;
836-7000

In the suburbs
toll free:
800-972-7000

Fares

Adult
Weekdays **30¢**
Universal Transfer **30**

**Senior Citizens &
Handicapped
Persons (with RTA card),
Students
Children 7-11.**
Weekdays **15¢**
Universal Transfer **15**

**Children under 7
(when with fare-
paying passenger).** **free**



725

**Lake Zurich—
Barrington
C&NW
Feeder**

728

**Lake Zurich—
Barrington
Work Express**

**New Service
November 6, 1978**



725 & 728

725 Lake Zurich Feeder Service— AM

Route 12 & Route 22	Main & Old Rand	Route 22 & Old Mill Grove	Pheasant Ridge & Old Rand	Ela & Lake-Cook	Bus Arrives C&NW	Train Leaves Barrington	Train Arrives Chicago
5:57am	6:07am	6:09am	6:14am	6:22am	6:28am	6:38am	7:40am
6:44	6:54	6:56	7:01	7:09	7:15	7:23	8:12
8:34	8:44	8:46	8:51	8:59	9:05	9:16	10:20

725 Lake Zurich Feeder Service—PM

Buses will meet the following trains at the Barrington C&NW Station:

Train Leaves Chicago	Train Arrives Barrington	Approximate Bus Departure Time
2:30pm	3:33pm	3:40pm
4:42	5:27	5:30
5:20	6:14	6:20
6:30	7:19	7:20

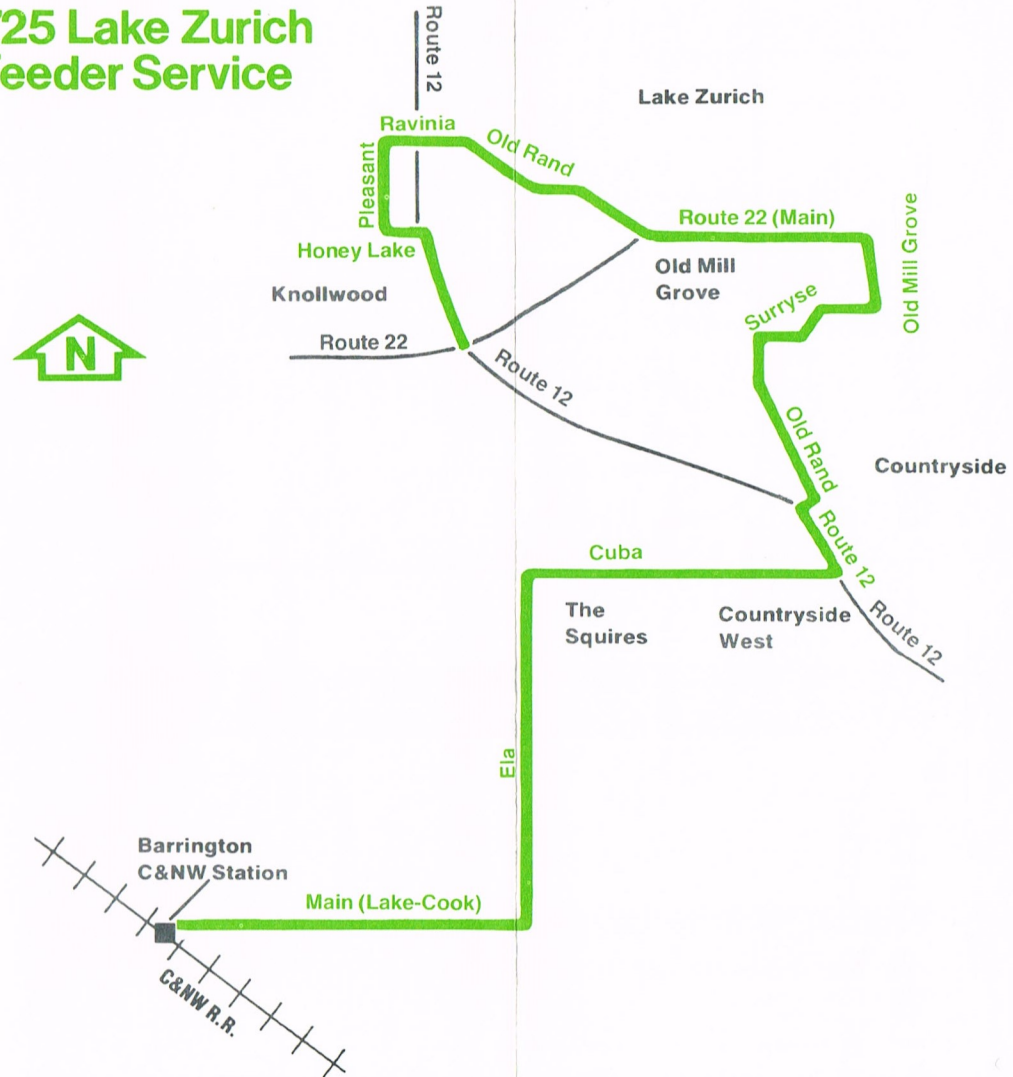
728 Lake Zurich Work Express—AM

Train Leaves Chicago	Train Leaves Jefferson Pk.	Train Leaves Des Plaines	Train Arrives Barrington	Bus Leaves Barrington	Bus Arrives Route 22 & Old Rand	Bus Arrives Route 22 & Oakwood	Bus Arrives Kemper
6:30am	6:48am	7:04am	7:33am	7:35am	7:55am	8:00am	8:05am

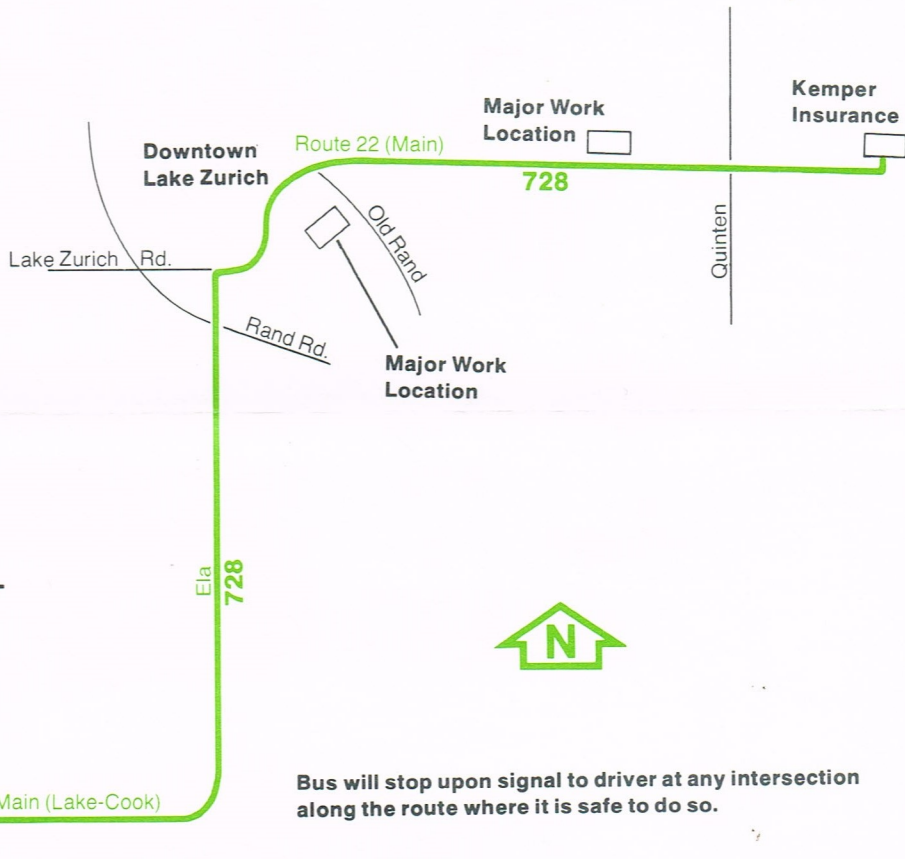
728 Lake Zurich Work Express—PM

Bus Leaves Route 22 & Old Rand	Bus Leaves Route 22 & Oakwood	Bus Leaves Kemper	Bus Arrives Barrington	Train Leaves Barrington	Train Arrives Des Plaines	Train Arrives Jefferson Pk.	Train Arrives Chicago
4:15pm	4:20pm	4:35pm	5:00pm	5:16pm	5:44pm	6:00pm	6:20pm

725 Lake Zurich Feeder Service



728 Lake Zurich Industrial Feeder



Operated by
Commuter Bus Systems

For lost and found informa-
tion call:
620-6800

Bus will stop upon signal to driver at any intersection
along the route where it is safe to do so.