

GO CTA

It's the Best Way
to the 53rd
Annual

CHICAGO AUTO- MOBILE SHOW

McCORMICK PLACE
LAKEFRONT
EXPOSITION HALL

11 A.M. to 11 P.M. Daily
Feb. 18 thru 26, 1961

Chicago Transit Authority

CTA BUS SERVICE

McCORMICK PLACE GREEN PENNANT SPECIAL

TO AND FROM

DOWNTOWN

(SERVING UNION AND NORTHWESTERN DEPOTS)

SPECIAL
for
AUTO SHOW

11 A.M. to 11 P.M.

DAILY

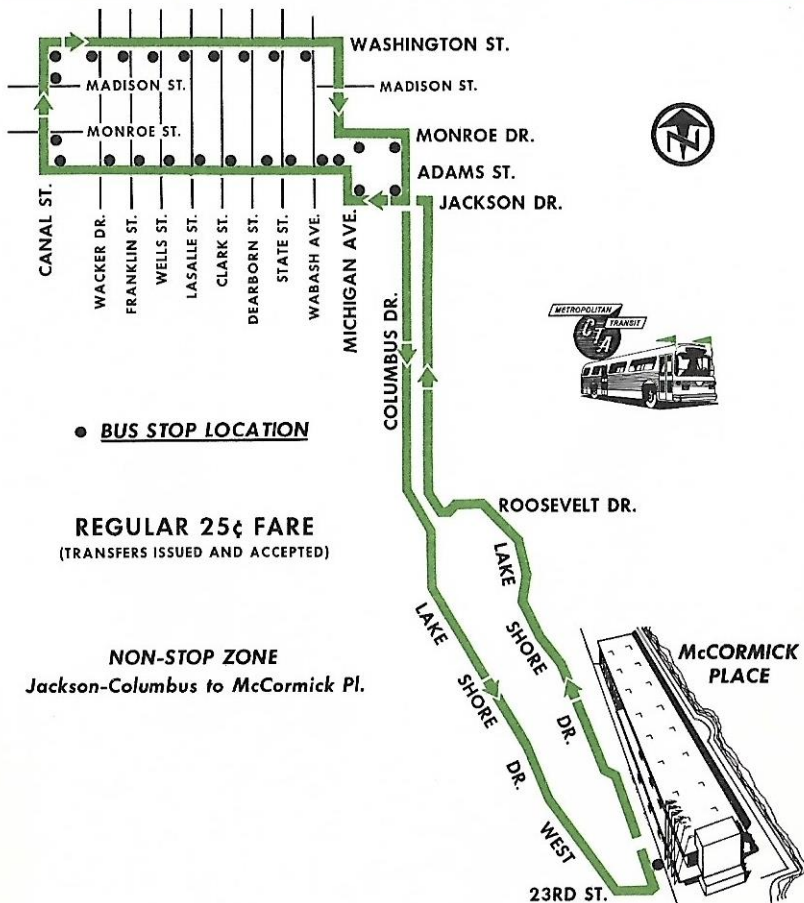
Feb. 18 to 26, inc.

SPECIAL
for
AUTO SHOW

11 A.M. to 11 P.M.

DAILY

Feb. 18 to 26, inc.



McCORMICK PLACE

LAKE FRONT EXPOSITION CENTER

Cermak Road Buses Serve McCormick Place From 6:30 AM To 11:59 PM Daily



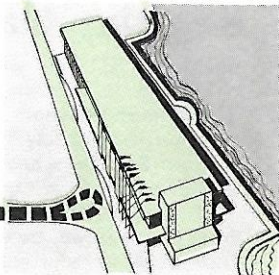
VIA RAPID TRANSIT

* Board "B" Train, North-South Route (State St. in Loop) and Transfer at Cermak Road Station to Eastbound Cermak Road Bus, Route No. 21. Free Transfer to and from All Other Rapid Transit Routes, and to and from Surface Routes at Authorized Transfer Points.

VIA BUS

Board Eastbound Cermak Road Bus, Route No. 21, or Bus of any Route Intersecting Cermak Road from Cicero Ave. East, and Transfer to Eastbound Cermak Road Bus. Cermak Road Buses Operate to and from the South Entrance of McCormick Place.

*Call CTA Information, MOhawk 4-7220, for details.



RIDE CTA...NO PARKING WORRIES...NO TRAFFIC WORRIES



Green Pennant Special Service

Buses in the GREEN PENNANT SERVICE fly GREEN PENNANTS from the upper front dash for easy identification. Buses operate at 10-minute intervals, subject to adjustment as warranted by the volume of patronage.

This is a SPECIAL SERVICE at CTA's standard rates of fare. Transfers are issued at the time the fare is paid, and are accepted from other CTA routes at authorized transfer points.

The Route to McCormick Place—Starting from the UNION STATION at Adams Street, north in Canal Street—serving the NORTH WESTERN Station—to Washington Street, east in Washington to Michigan Avenue, south in Michigan to Monroe Drive, east in Monroe to Columbus Drive, south in Columbus and Lake Shore Drive West to 23rd Street, and east in 23rd to the south main entrance of McCormick Place.

The Route to Downtown—North in Lake Shore Drive East from McCormick Place to Roosevelt Drive, west in Roosevelt to Columbus Drive, north in Columbus to Jackson Drive, west in Jackson to Michigan Avenue, north in Michigan to Adams Street, and west in Adams to Canal Street, and thence over the route to McCormick Place.

Patrons may board and alight at all designated stops on the route. The non-stop zone extends from Jackson Drive at Columbus Drive to McCormick Place.

Regular Daily CTA Service

Board any "B" train on North-South "L"-Subway route and ride to Cermak "L" station. Transfer to eastbound Cermak bus and ride direct to the south main entrance of McCormick Place.

After approximately 9:15 P.M. on weekdays and after about 6:45 P.M. on Saturdays and all day Sundays and holidays, all North-South trains stop at Cermak Road.

To reach the North-South route from other Rapid Transit lines: From *Ravenswood*, transfer at Fullerton "L" station;

From *Lake*, transfer at State-Van Buren "L" station to Jackson-Van Buren station in the State Street subway.

From *Congress*, *Douglas* and *Milwaukee* services, transfer via lower level passageways located at Washington and Jackson subway stations.

All Rapid Transit routes are easily reached by Surface Lines.

Transfers from any intersecting North-South Surface route may be made to eastbound Cermak buses between Cicero avenue (4800 W.) and Indiana Avenue (200 E.).

Patrons leaving McCormick Place by Cermak Road buses may transfer to other CTA services, surface and rapid transit, at all authorized transfer points.

